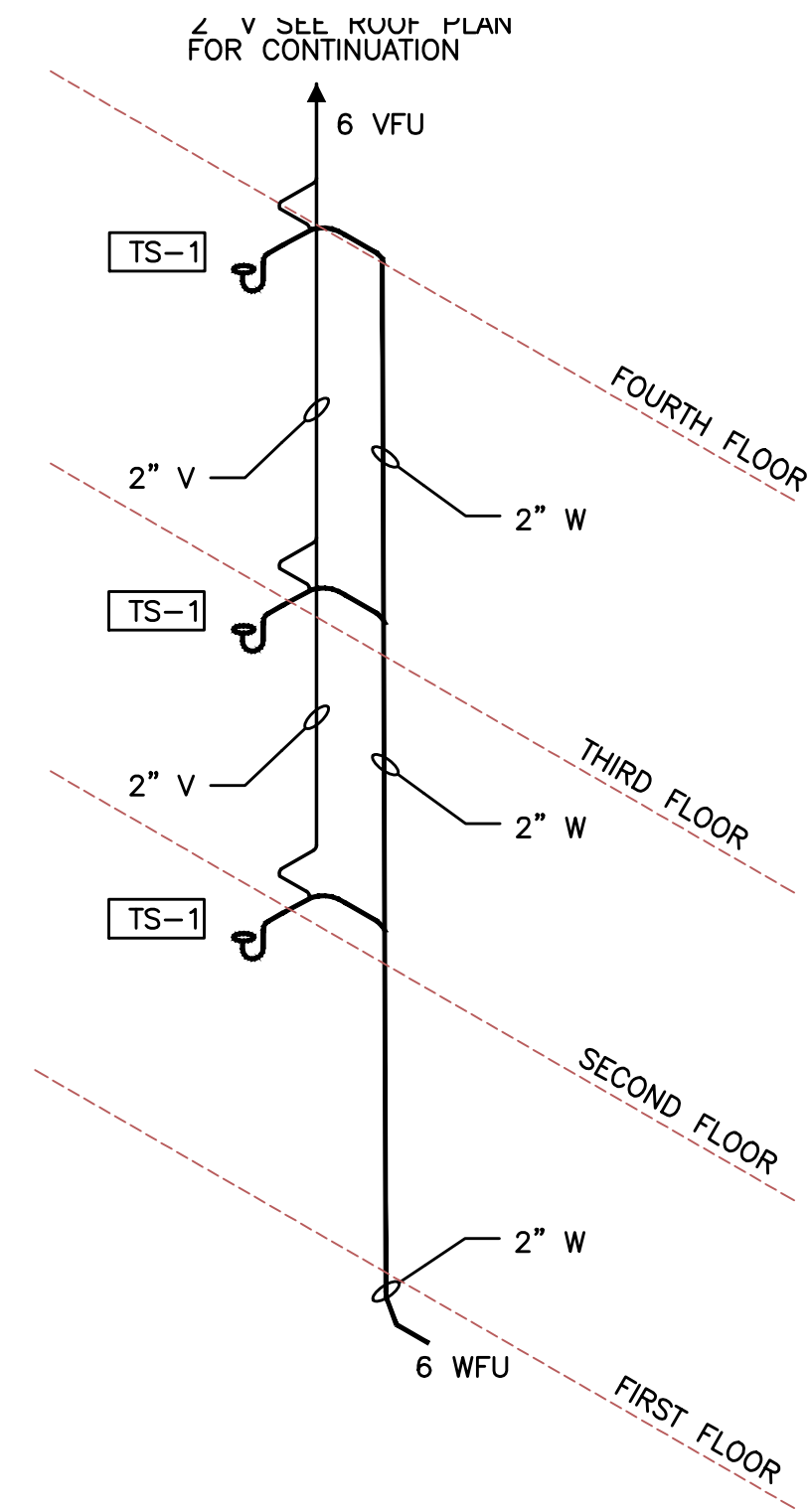
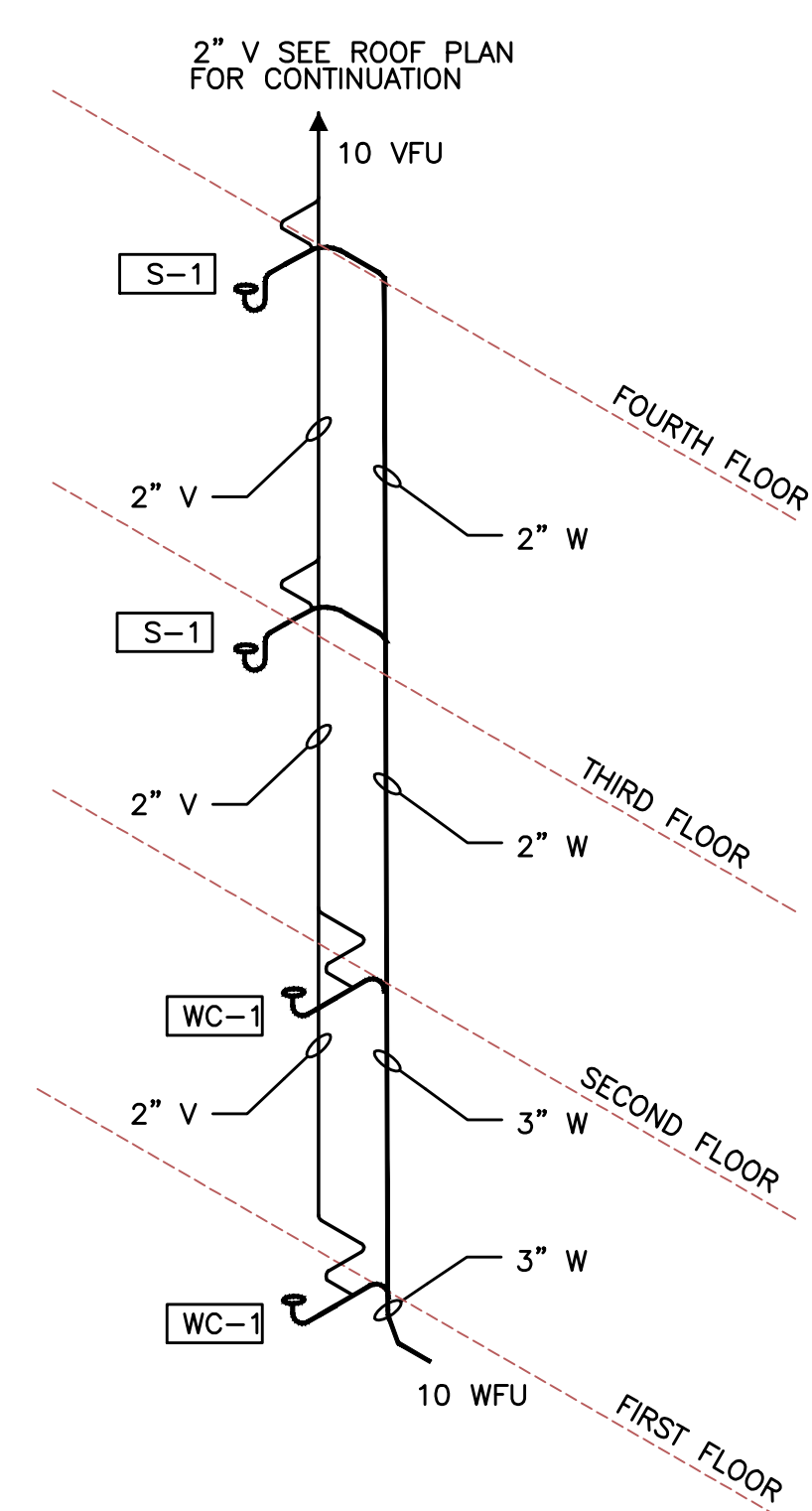


PRELIMINARY
NOT FOR
CONSTRUCTION



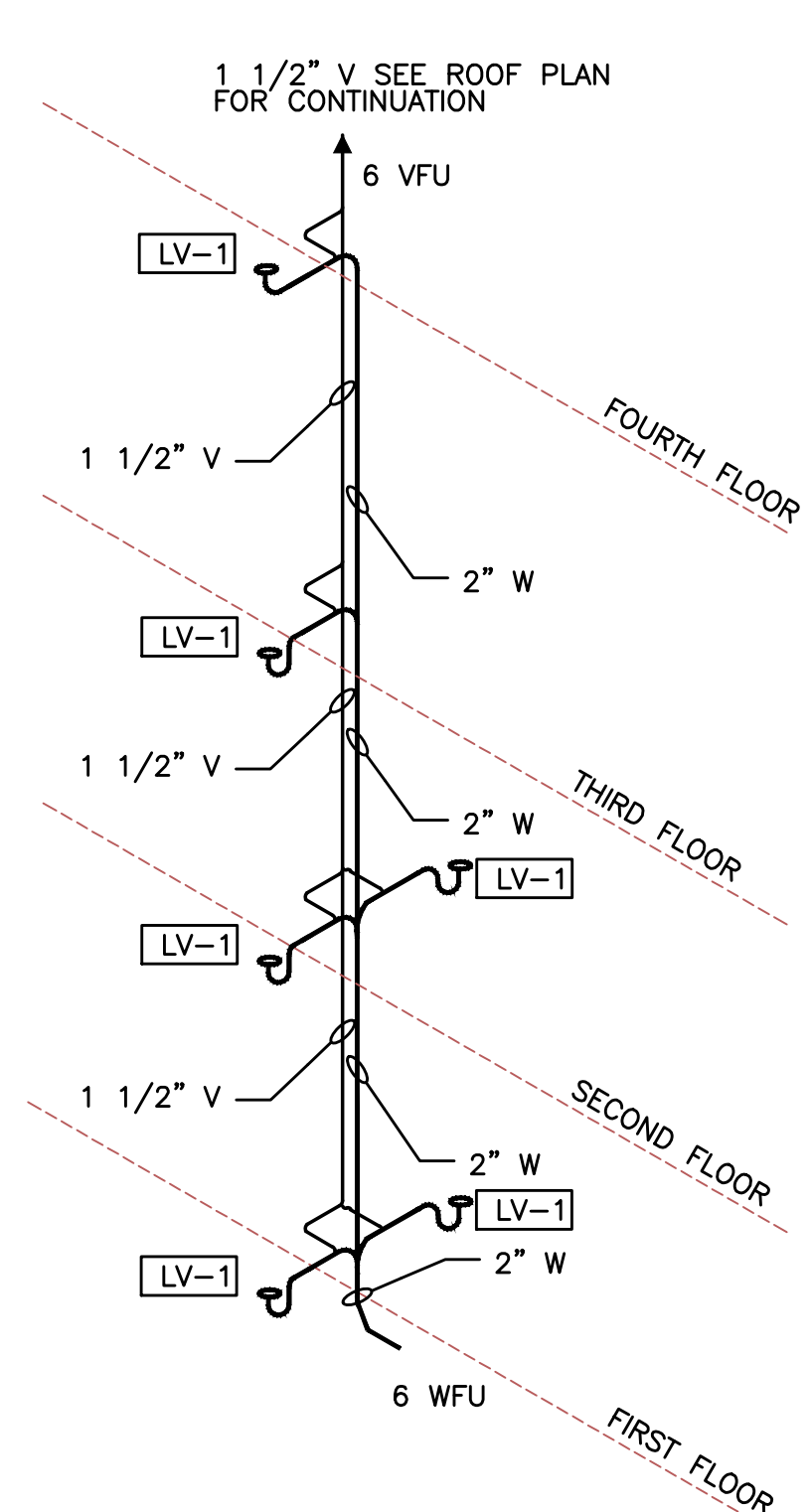
1 RISER "17" TYPICAL
P5.2 NOT TO SCALE

NOTE: DRAINAGE CONNECTIONS SHALL NOT BE MADE INTO A DRAINAGE PIPING SYSTEM WITHIN 8 FT OF ANY VERTICAL TO HORIZONTAL CHANGE OF DIRECTION OF A STACK CONTAINING A SUDS- PRODUCING FIXTURE. EXCEPTION: STACKS RECEIVING THE DISCHARGE FROM LESS THEN 3 STORIES OF PLUMBING FIXTURES.

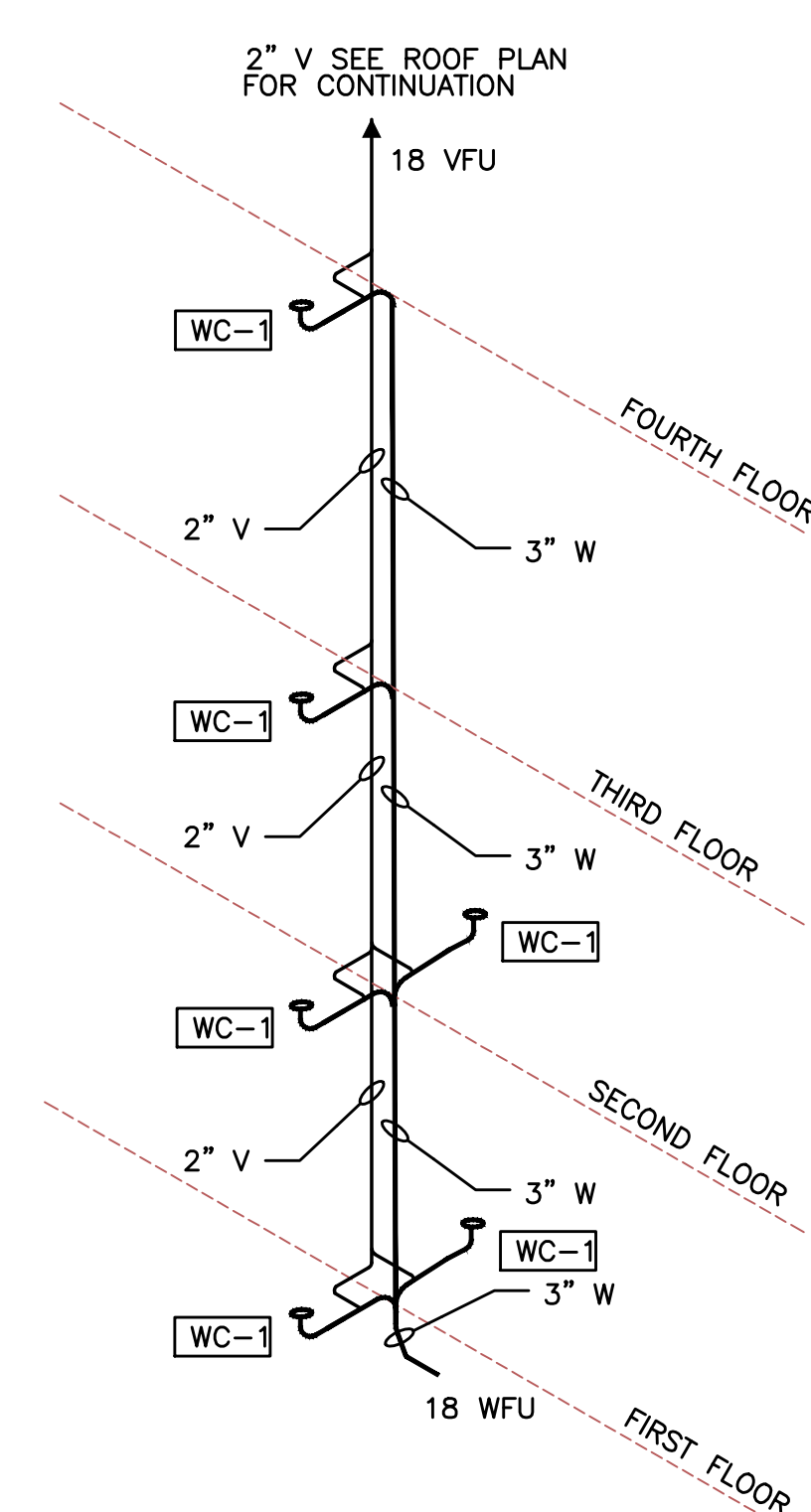


2 RISER "18" TYPICAL
P5.2 NOT TO SCALE

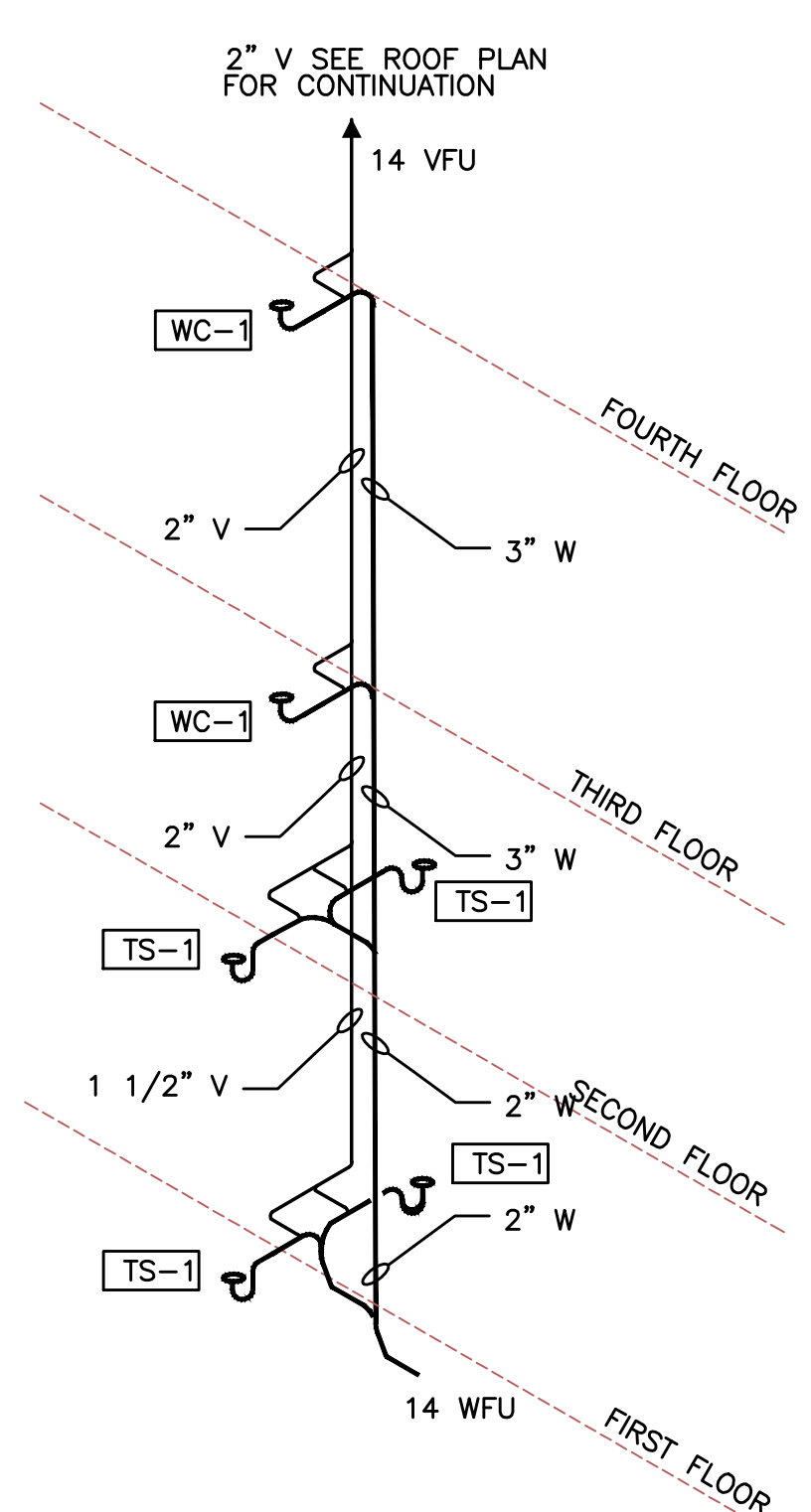
NOTE: DRAINAGE CONNECTIONS SHALL NOT BE MADE INTO A DRAINAGE PIPING SYSTEM WITHIN 8 FT OF ANY VERTICAL TO HORIZONTAL CHANGE OF DIRECTION OF A STACK CONTAINING A SUDS- PRODUCING FIXTURE. EXCEPTION: STACKS RECEIVING THE DISCHARGE FROM LESS THEN 3 STORIES OF PLUMBING FIXTURES.



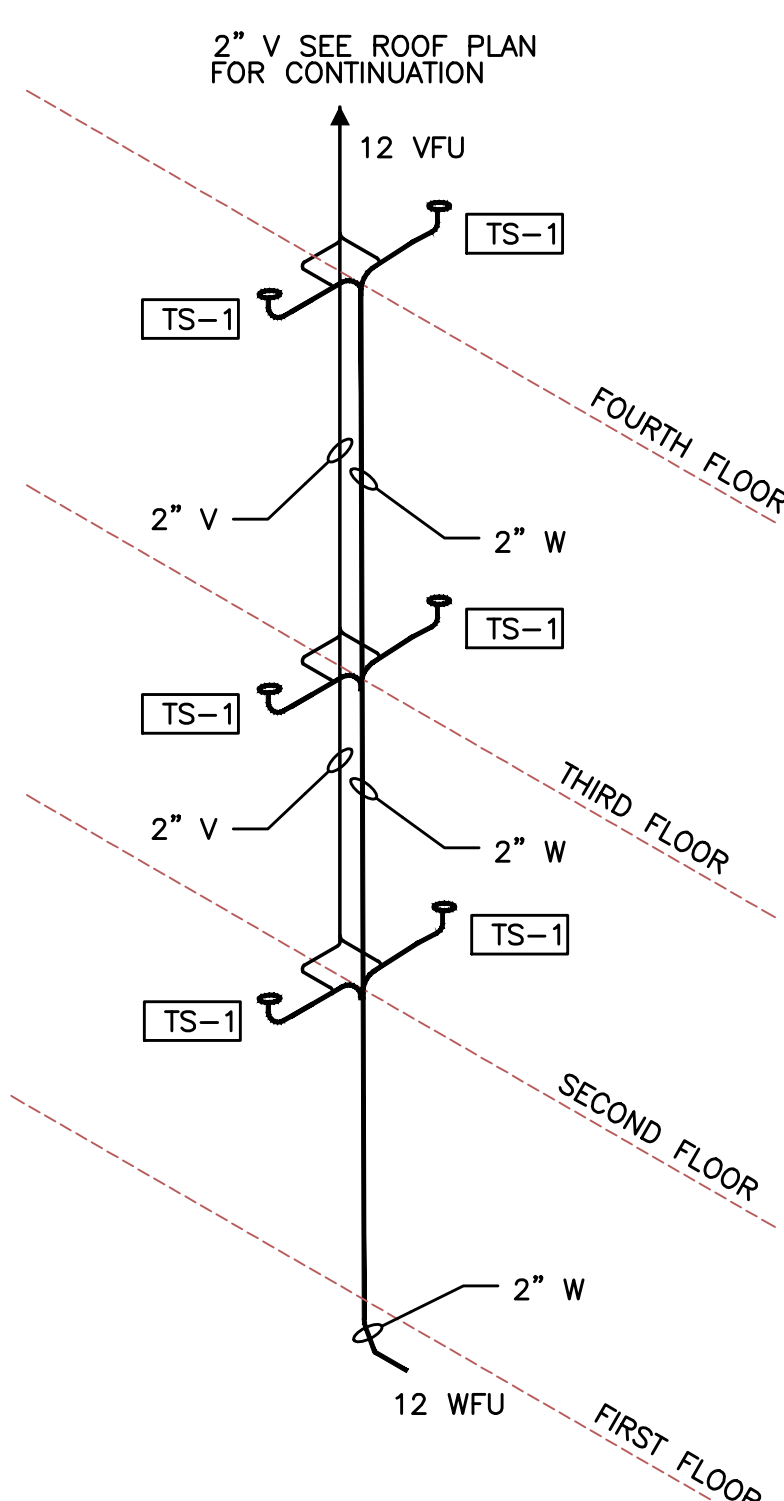
3 RISER "19" TYPICAL
P5.2 NOT TO SCALE



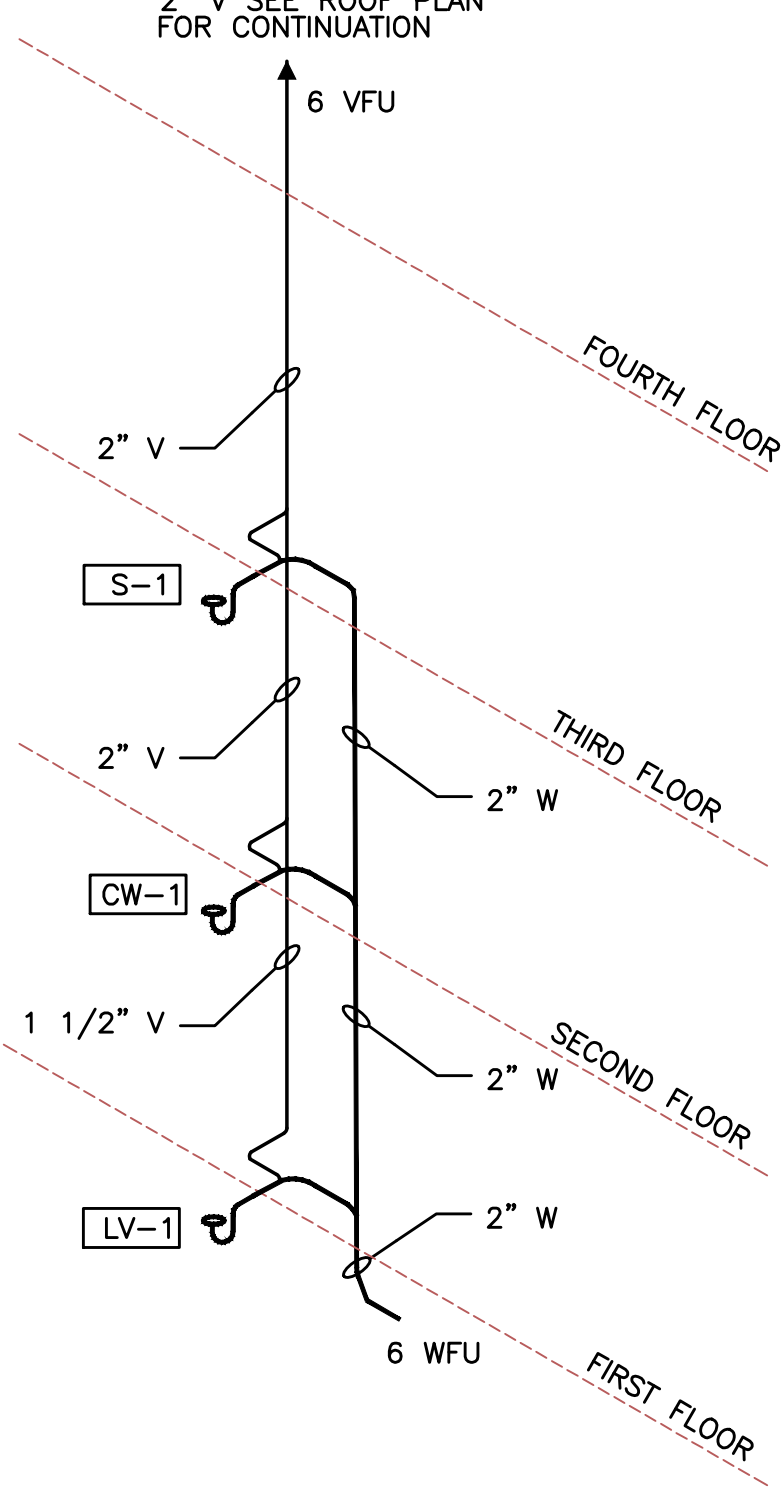
4 RISER "20" TYPICAL
P5.2 NOT TO SCALE



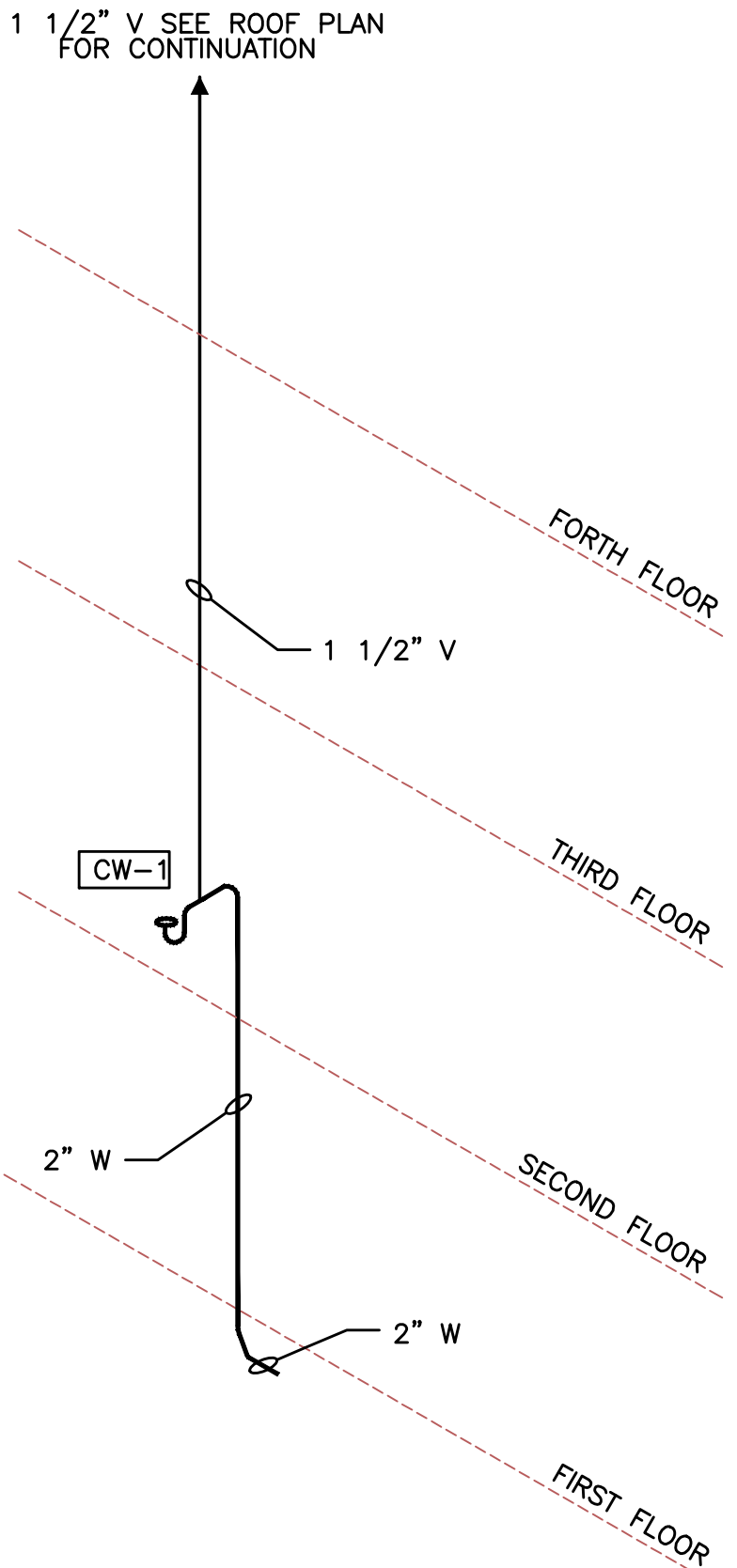
5 RISER "21" TYPICAL
P5.2 NOT TO SCALE



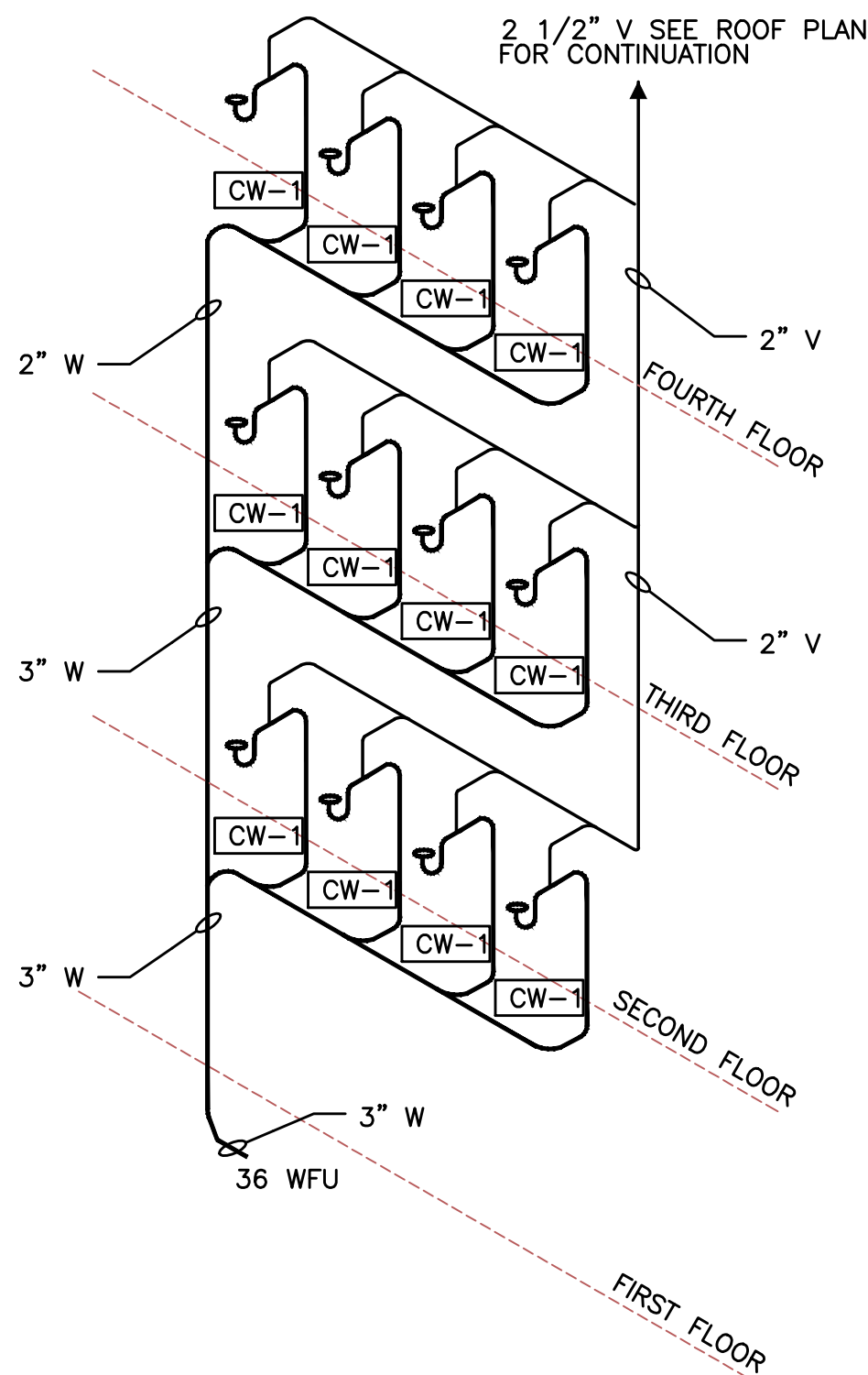
6 RISER "22" TYPICAL
P5.2 NOT TO SCALE



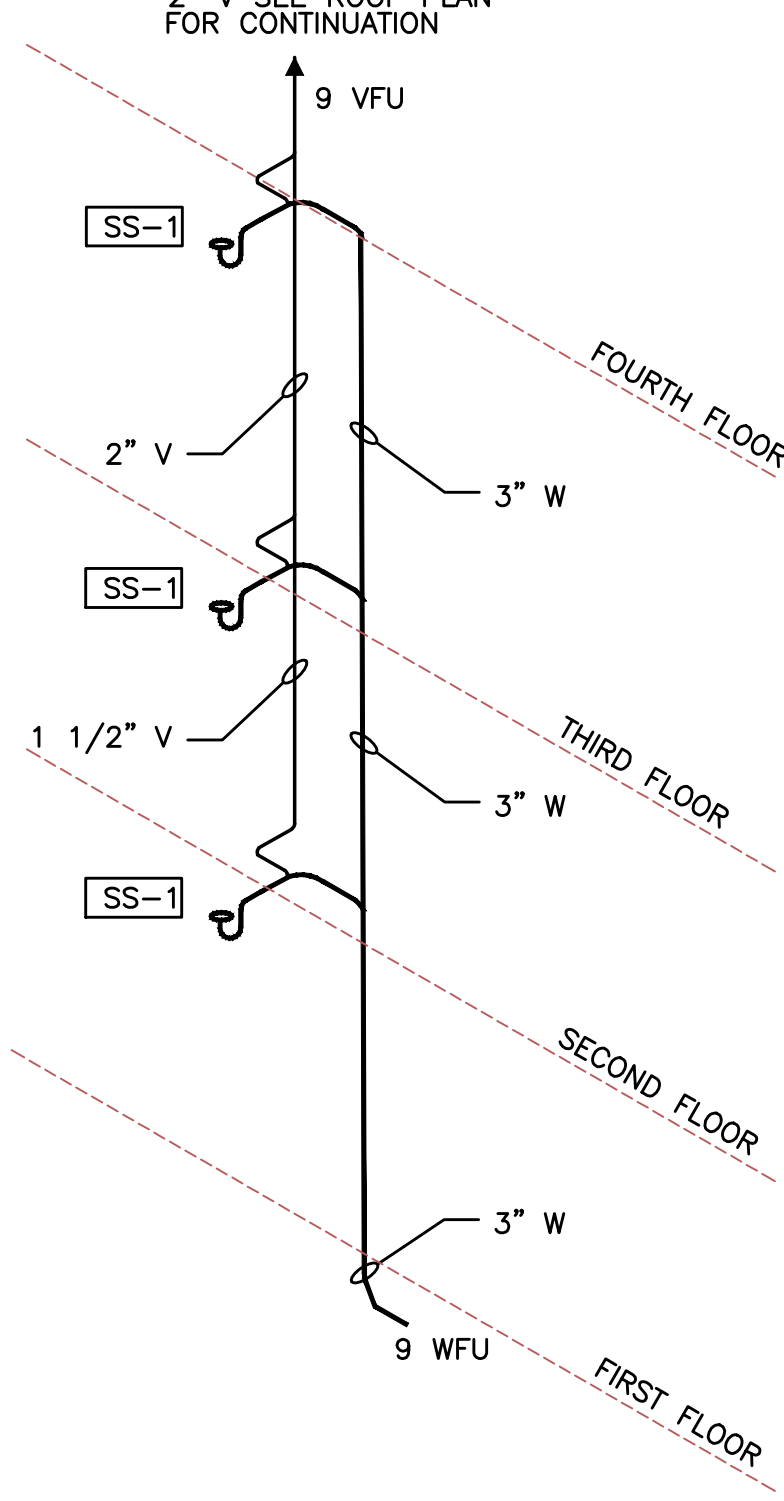
7 RISER "23" TYPICAL
P5.2 NOT TO SCALE



8 RISER "24" TYPICAL
P5.2 NOT TO SCALE



9 RISER "25" TYPICAL
P5.2 NOT TO SCALE



10 RISER "26" TYPICAL
P5.2 NOT TO SCALE

KING+PARKS MULTI-FAMILY RESIDENCES

PROJECT SITE: NE Martin Luther King Jr. Boulevard & N Rosa Parks Way
OWNER: Portland Community Reinvestment Initiatives Inc. (PCRI)
6329 NE Martin Luther King Jr. Blvd. Portland, Oregon 97211



PROJECT NO. 16-0602	ISSUE DATE 06.23.2017
REVISIONS	

SHEET
WASTE/VENT
RISERS
P5.2
NOT FOR CONSTRUCTION
PRICING SET
© MERRYMAN BARNES ARCHITECTS, INC.

Merryman Barnes Architects
Consulting Engineers
2007 S.E. Ash St.
Portland, OR 97214
PHN: (503) 234-0548
FAX: (503) 234-0677
INC. WWW.MBA-ENG.COM
CONTACT: Takako Baker

MERRYMAN BARNES ARCHITECTS 475 N ALBINA AVE SUITE 304 PORTLAND, OREGON 97217 P. 503.232.3753 WWW.MERRYMANBARNESARCHITECTS.COM