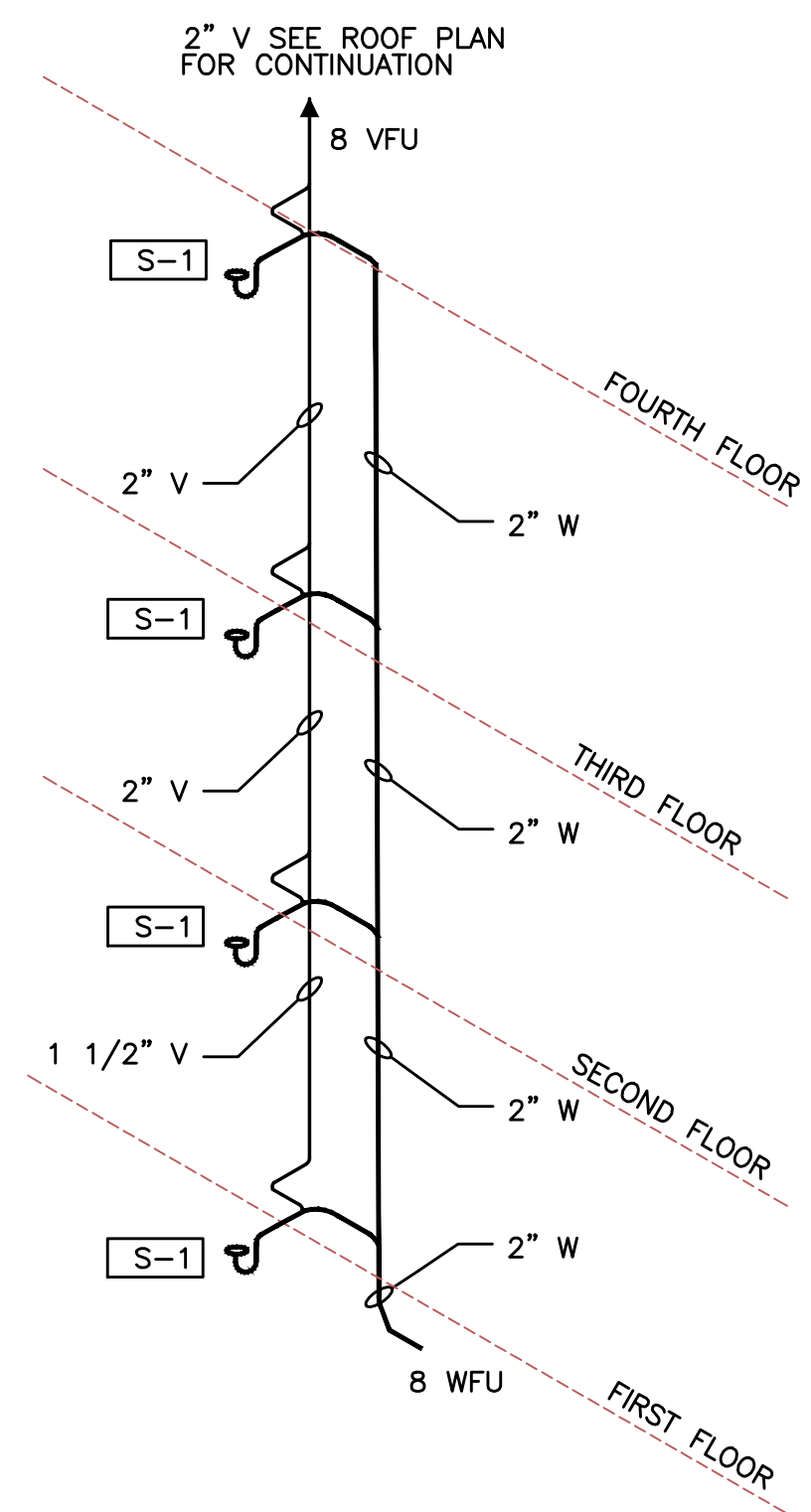
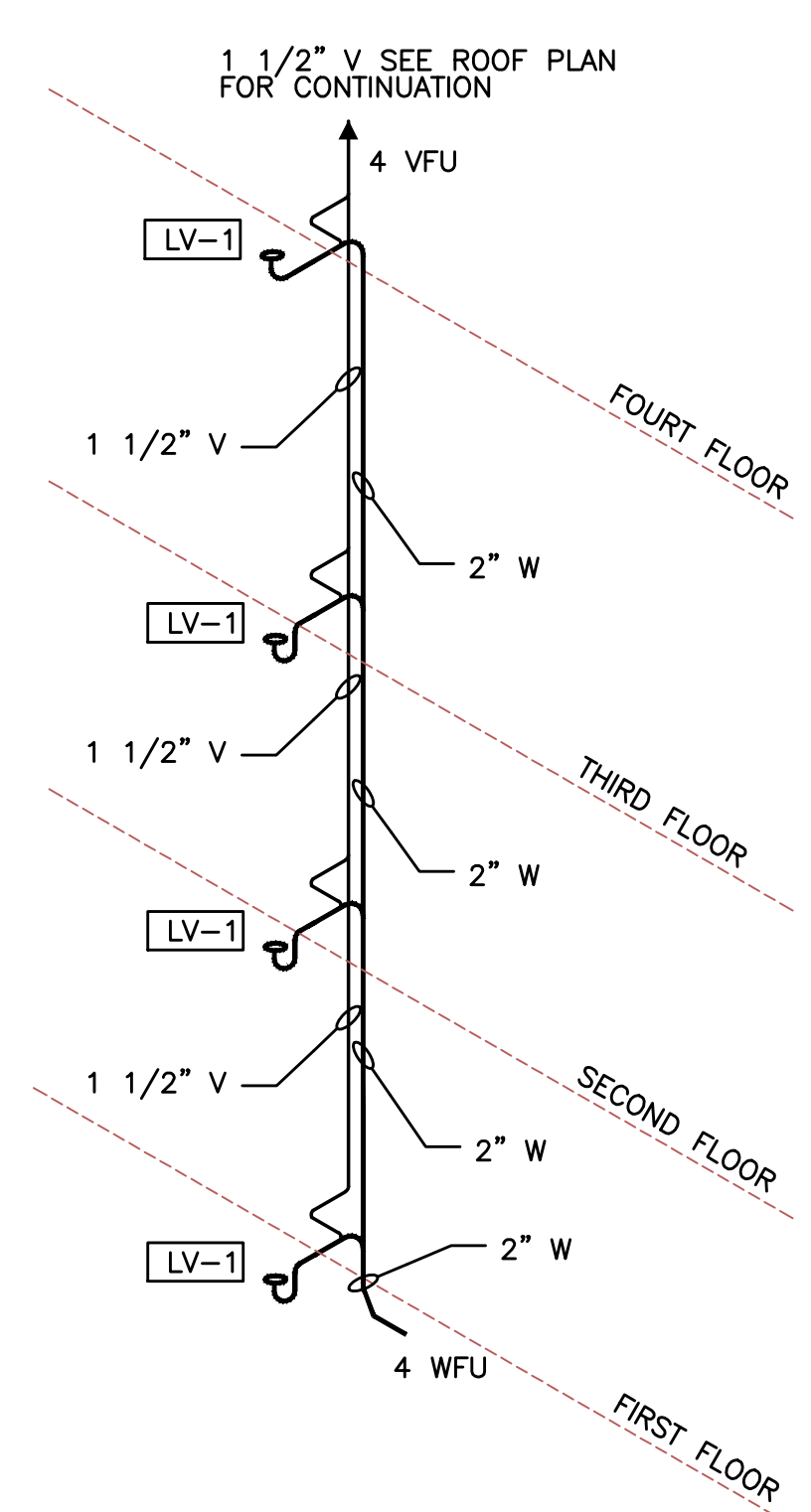


PRELIMINARY
NOT FOR
CONSTRUCTION

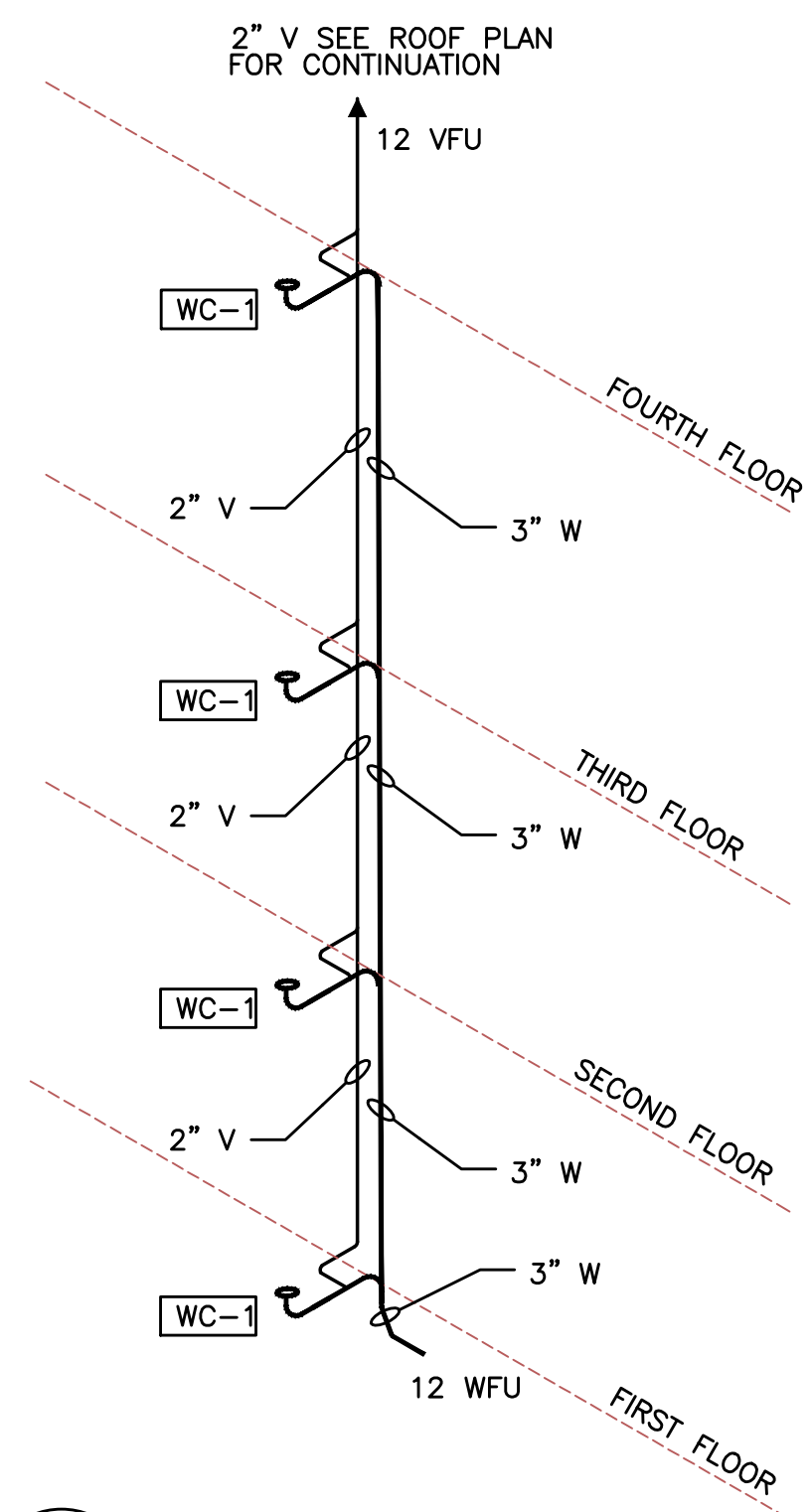


1 RISER "9" TYPICAL
P5.1 NOT TO SCALE

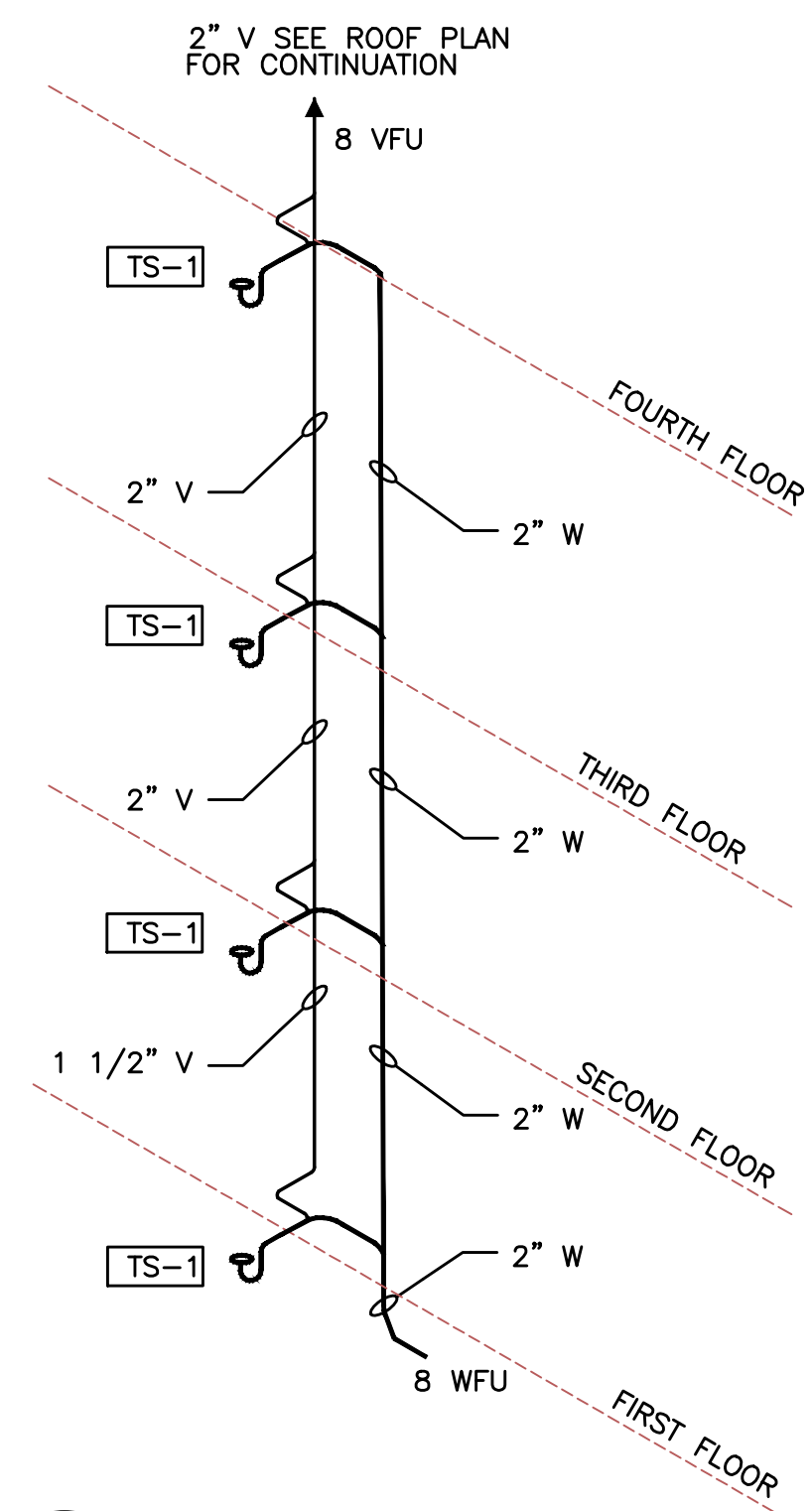
NOTE: DRAINAGE CONNECTIONS SHALL NOT BE MADE INTO A DRAINAGE PIPING SYSTEM WITHIN 8 FT OF ANY VERTICAL TO HORIZONTAL CHANGE OF DIRECTION OF A STACK CONTAINING A SUDS- PRODUCING FIXTURE. EXCEPTION: STACKS RECEIVING THE DISCHARGE FROM LESS THEN 3 STORIES OF PLUMBING FIXTURES.



2 RISER "10" TYPICAL
P5.1 NOT TO SCALE

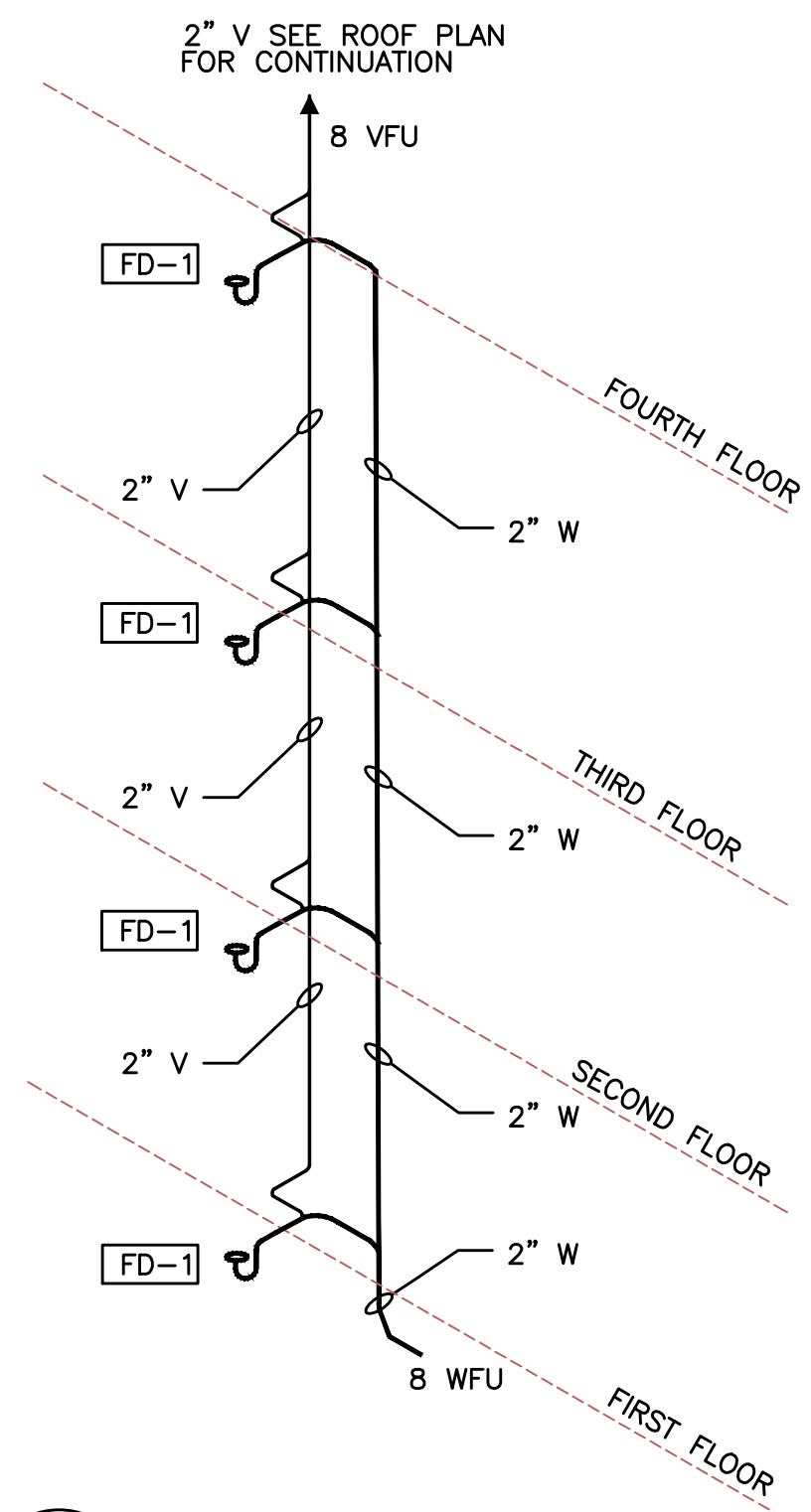


3 RISER "11" TYPICAL
P5.1 NOT TO SCALE

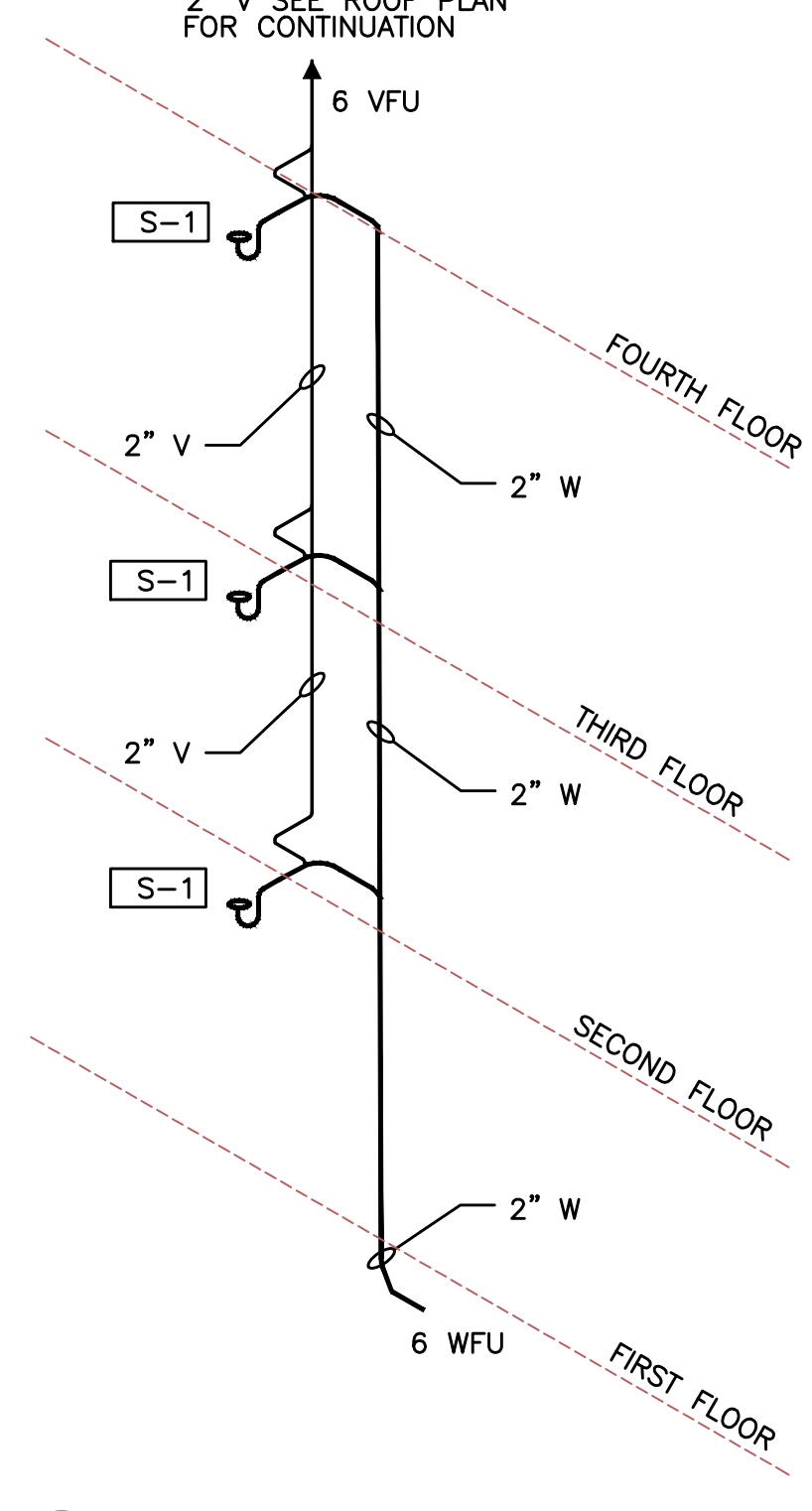


4 RISER "12" TYPICAL
P5.1 NOT TO SCALE

NOTE: DRAINAGE CONNECTIONS SHALL NOT BE MADE INTO A DRAINAGE PIPING SYSTEM WITHIN 8 FT OF ANY VERTICAL TO HORIZONTAL CHANGE OF DIRECTION OF A STACK CONTAINING A SUDS- PRODUCING FIXTURE. EXCEPTION: STACKS RECEIVING THE DISCHARGE FROM LESS THEN 3 STORIES OF PLUMBING FIXTURES.

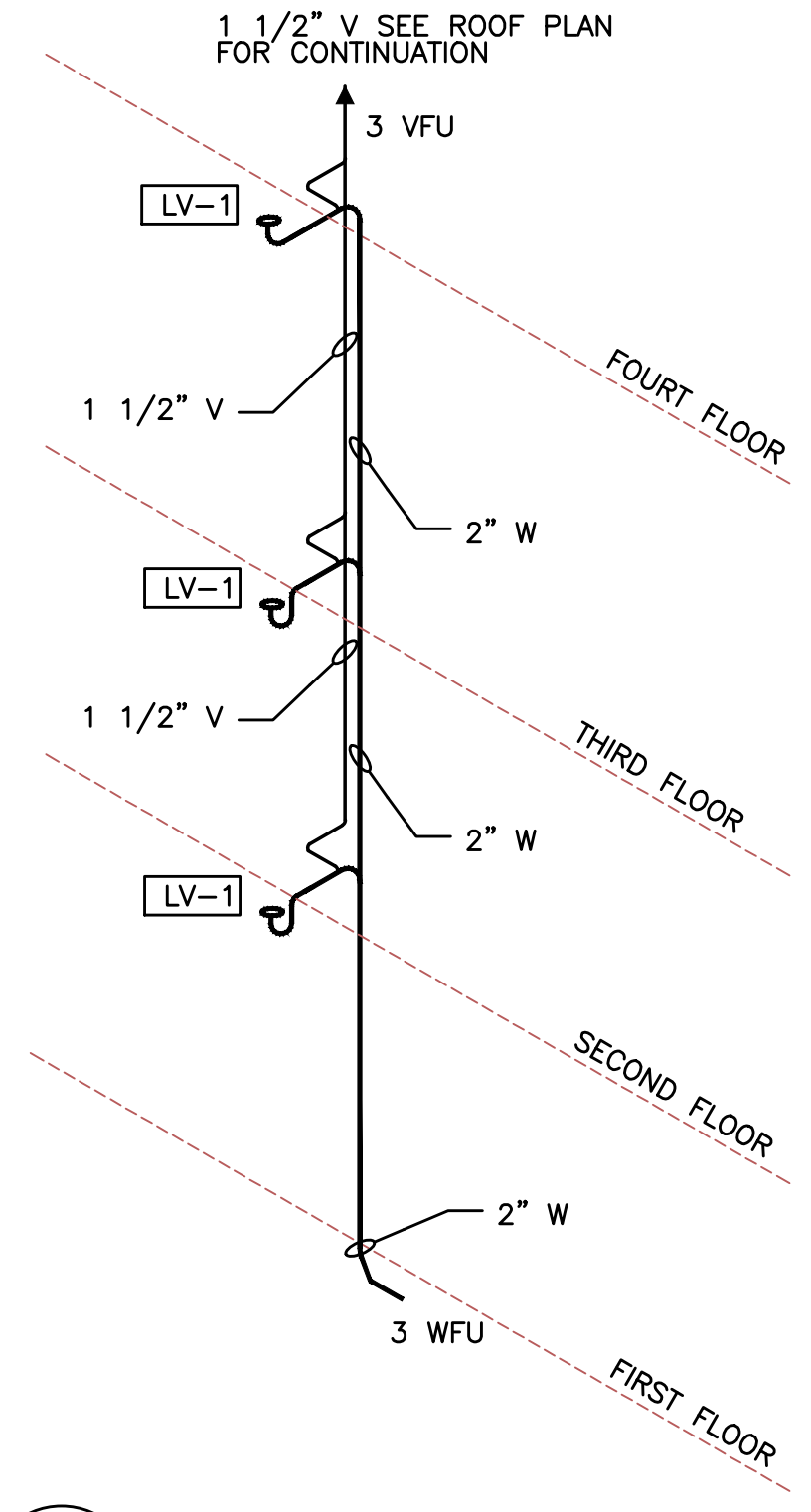


5 RISER "13" TYPICAL
P5.1 NOT TO SCALE

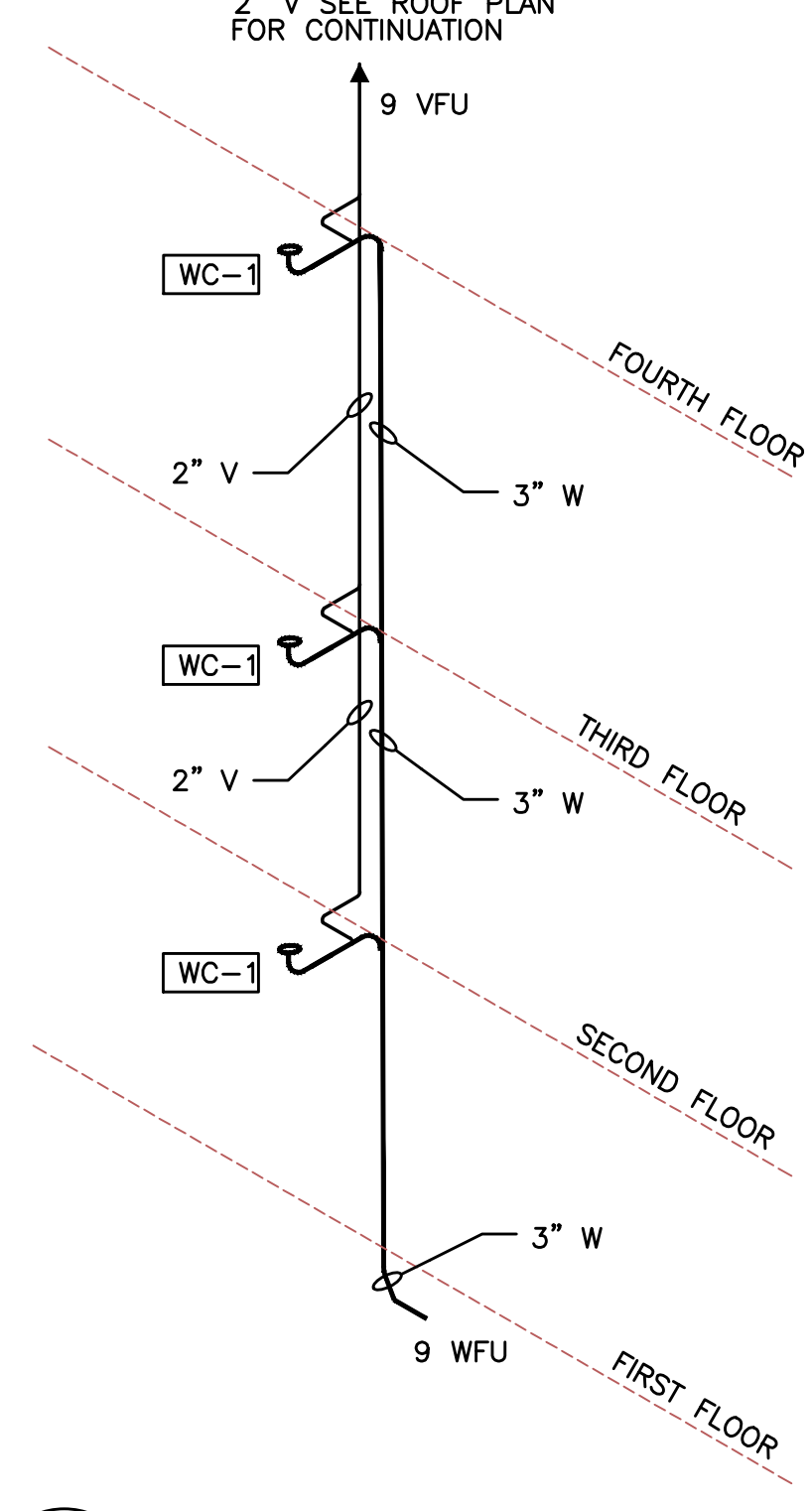


6 RISER "14" TYPICAL
P5.1 NOT TO SCALE

NOTE: DRAINAGE CONNECTIONS SHALL NOT BE MADE INTO A DRAINAGE PIPING SYSTEM WITHIN 8 FT OF ANY VERTICAL TO HORIZONTAL CHANGE OF DIRECTION OF A STACK CONTAINING A SUDS- PRODUCING FIXTURE. EXCEPTION: STACKS RECEIVING THE DISCHARGE FROM LESS THEN 3 STORIES OF PLUMBING FIXTURES.



7 RISER "15" TYPICAL
P5.1 NOT TO SCALE



8 RISER "16" TYPICAL
P5.1 NOT TO SCALE

KING+PARKS MULTI-FAMILY RESIDENCES

PROJECT SITE: NE Martin Luther King Jr. Boulevard & N Rosa Parks Way
OWNER: Portland Community Reinvestment Initiatives Inc. (PCRI)
6329 NE Martin Luther King Jr. Blvd. Portland, Oregon 97211



PROJECT NO. 16-0602
ISSUE DATE 06.23.2017

REVISIONS

SHEET

WASTE/VENT
RISERS

P5.1

NOT FOR CONSTRUCTION
PRICING SET

M Consulting Engineers
2007 S.E. Ash St.
Portland, OR 97214
PHN: (503) 234-0548
FAX: (503) 234-0677
INC. WWW.MFIA-ENG.COM
CONTACT: Takako Baker

MERRYMAN BARNES ARCHITECTS 4753 ALBINA AVE SUITE 304 PORTLAND, OREGON 97217 P. 503.222.3753 WWW.MERRYMANBARNESARCHITECTS.COM