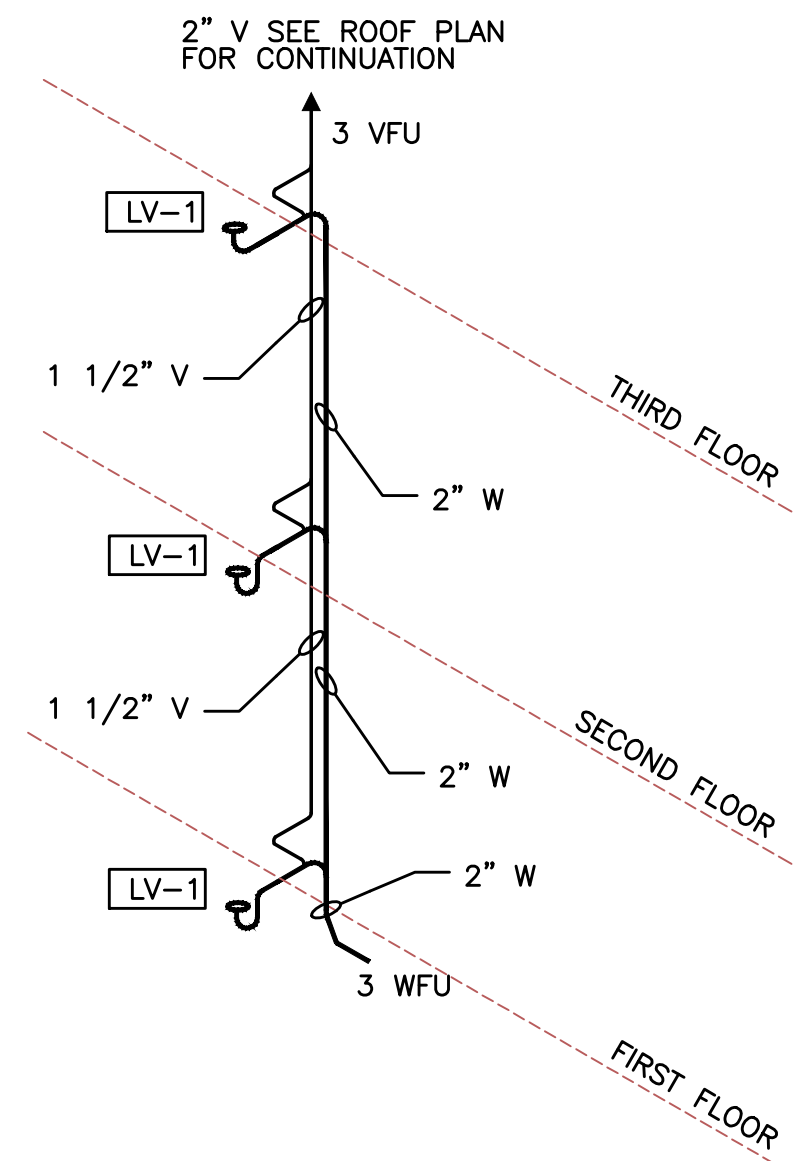
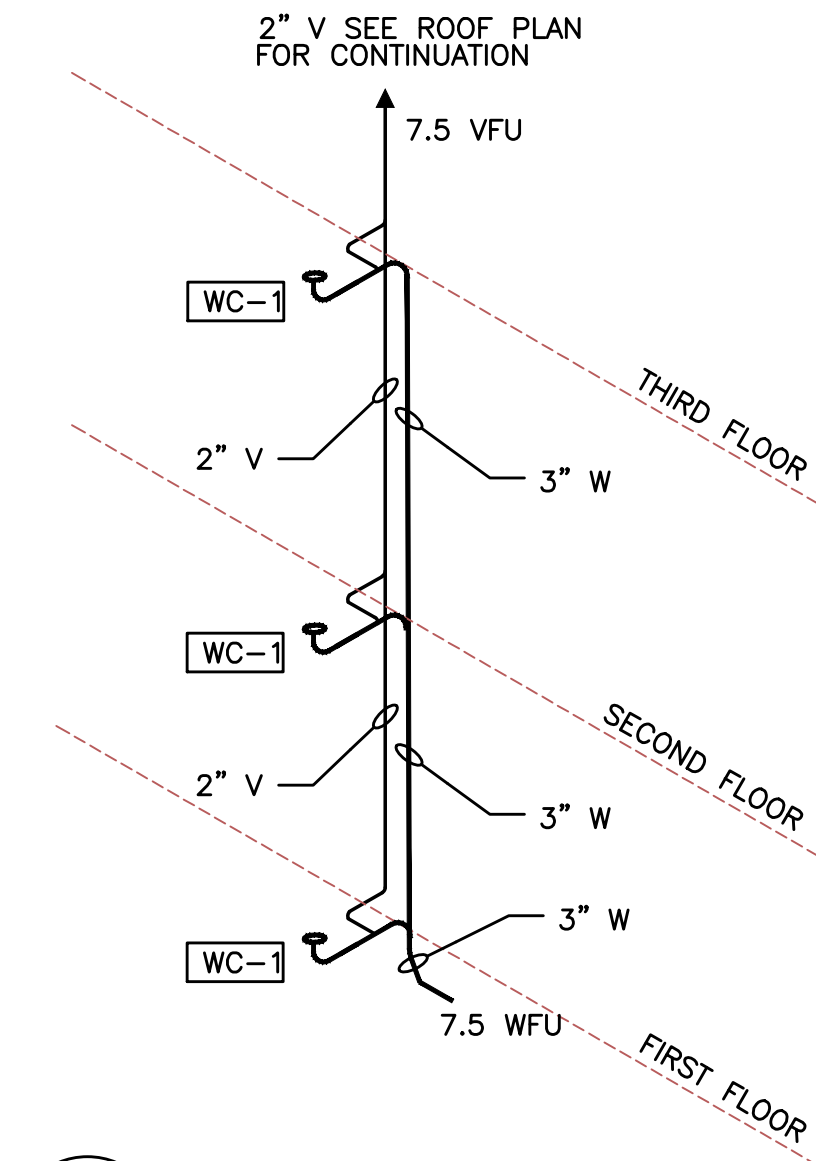


1 RISER "1" TYPICAL
P5.0 NOT TO SCALE

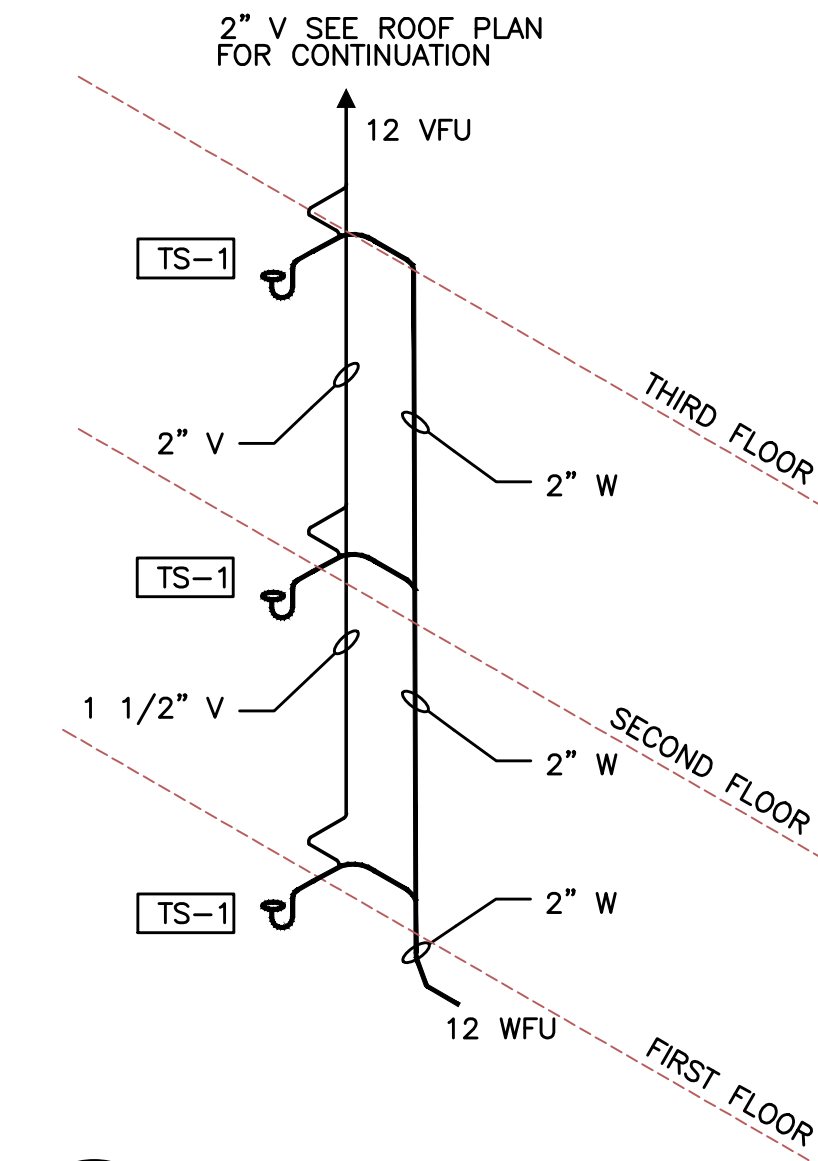
NOTE: DRAINAGE CONNECTIONS SHALL NOT BE MADE INTO A DRAINAGE PIPING SYSTEM WITHIN 8 FT OF ANY VERTICAL TO HORIZONTAL CHANGE OF DIRECTION OF A STACK CONTAINING A SUDS-PRODUCING FIXTURE. EXCEPTION: STACKS RECEIVING THE DISCHARGE FROM LESS THAN 3 STORIES OF PLUMBING FIXTURES.



2 RISER "2" TYPICAL
P5.0 NOT TO SCALE

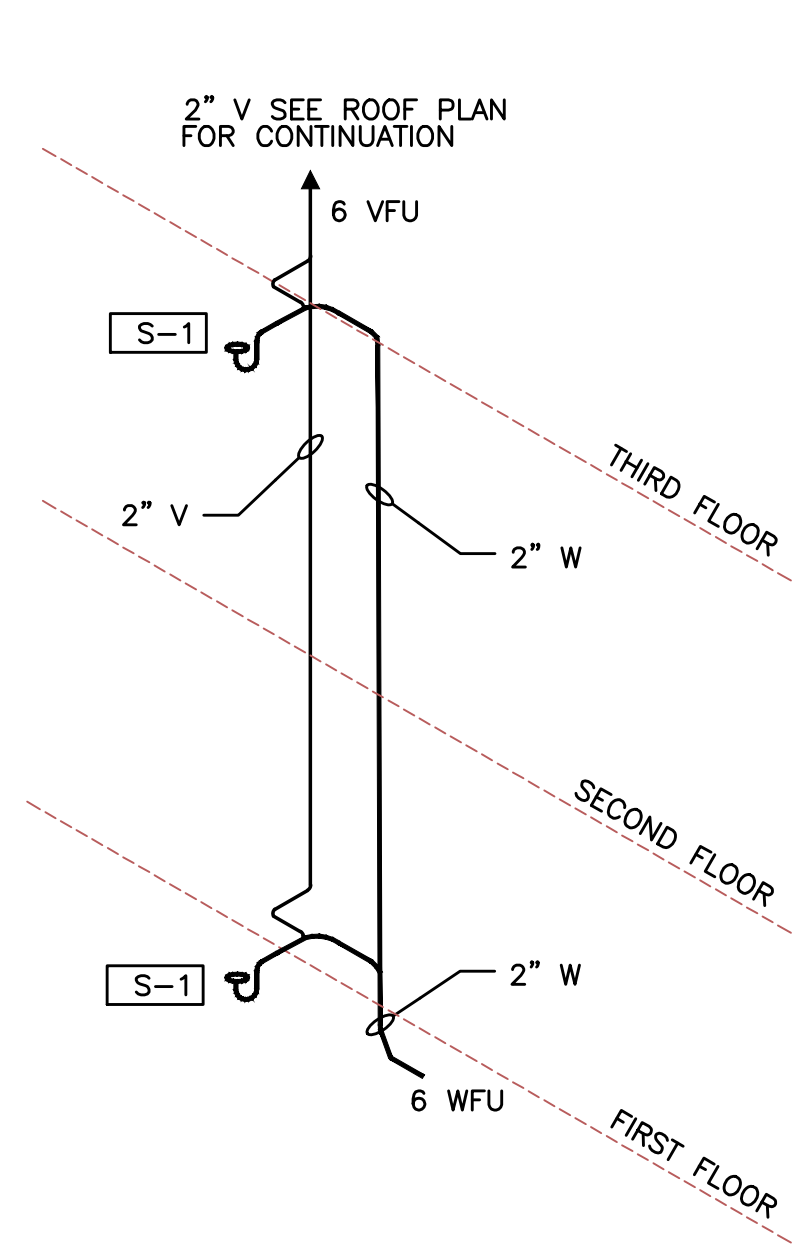


3 RISER "3" TYPICAL
P5.0 NOT TO SCALE

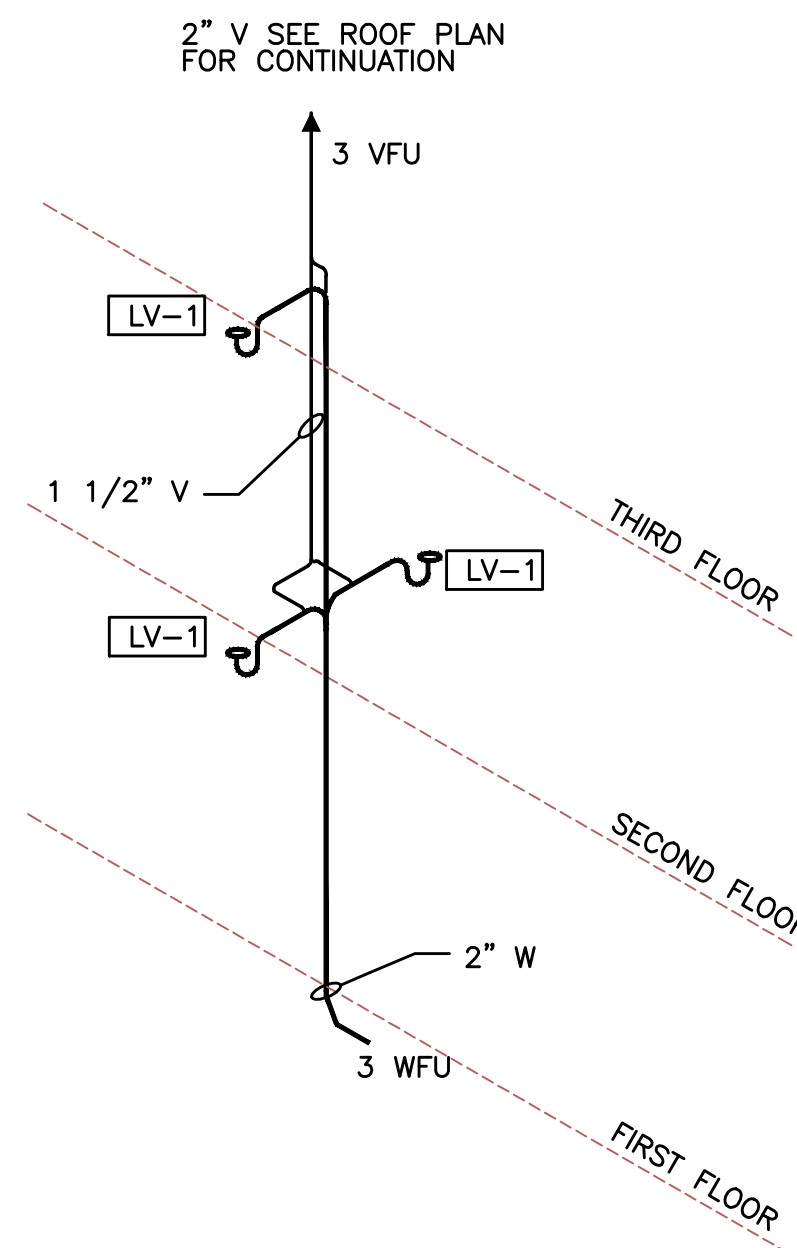


4 RISER "4" TYPICAL
P5.0 NOT TO SCALE

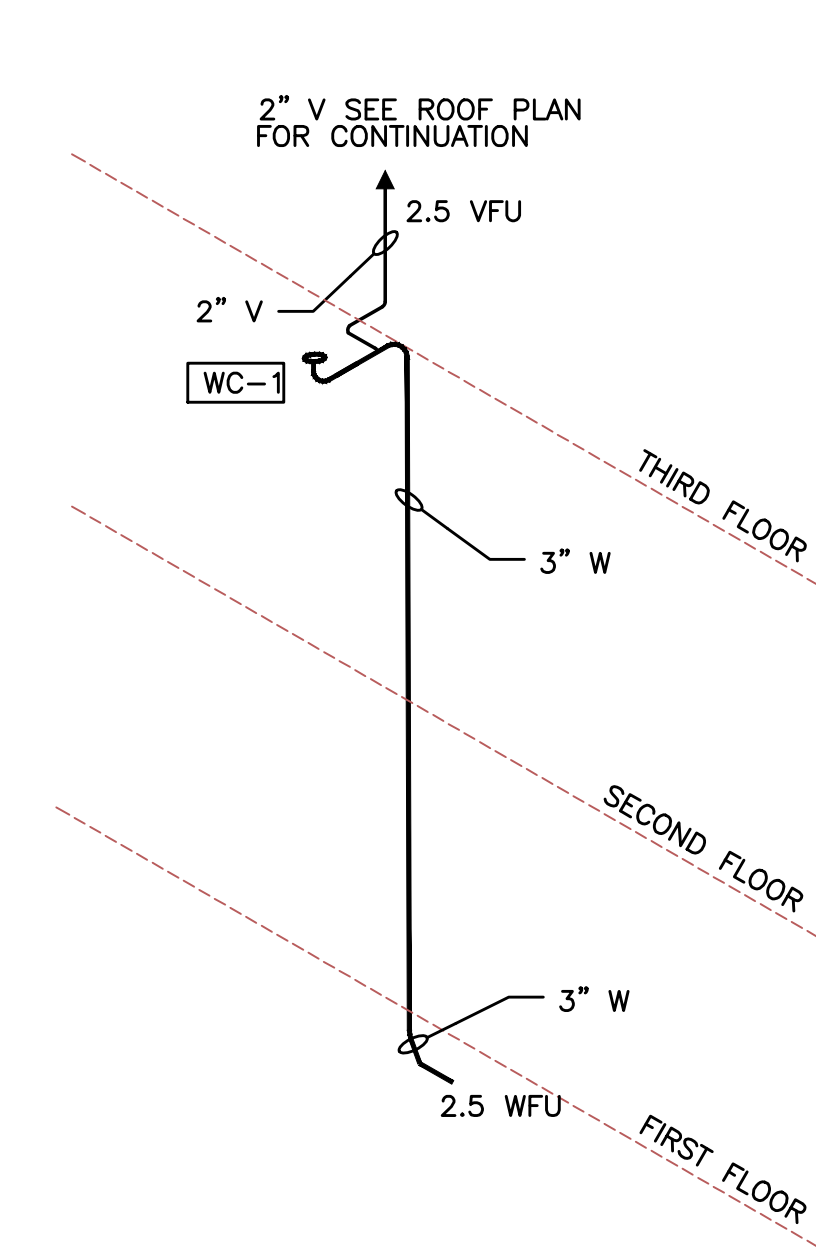
NOTE: DRAINAGE CONNECTIONS SHALL NOT BE MADE INTO A DRAINAGE PIPING SYSTEM WITHIN 8 FT OF ANY VERTICAL TO HORIZONTAL CHANGE OF DIRECTION OF A STACK CONTAINING A SUDS-PRODUCING FIXTURE. EXCEPTION: STACKS RECEIVING THE DISCHARGE FROM LESS THAN 3 STORIES OF PLUMBING FIXTURES.



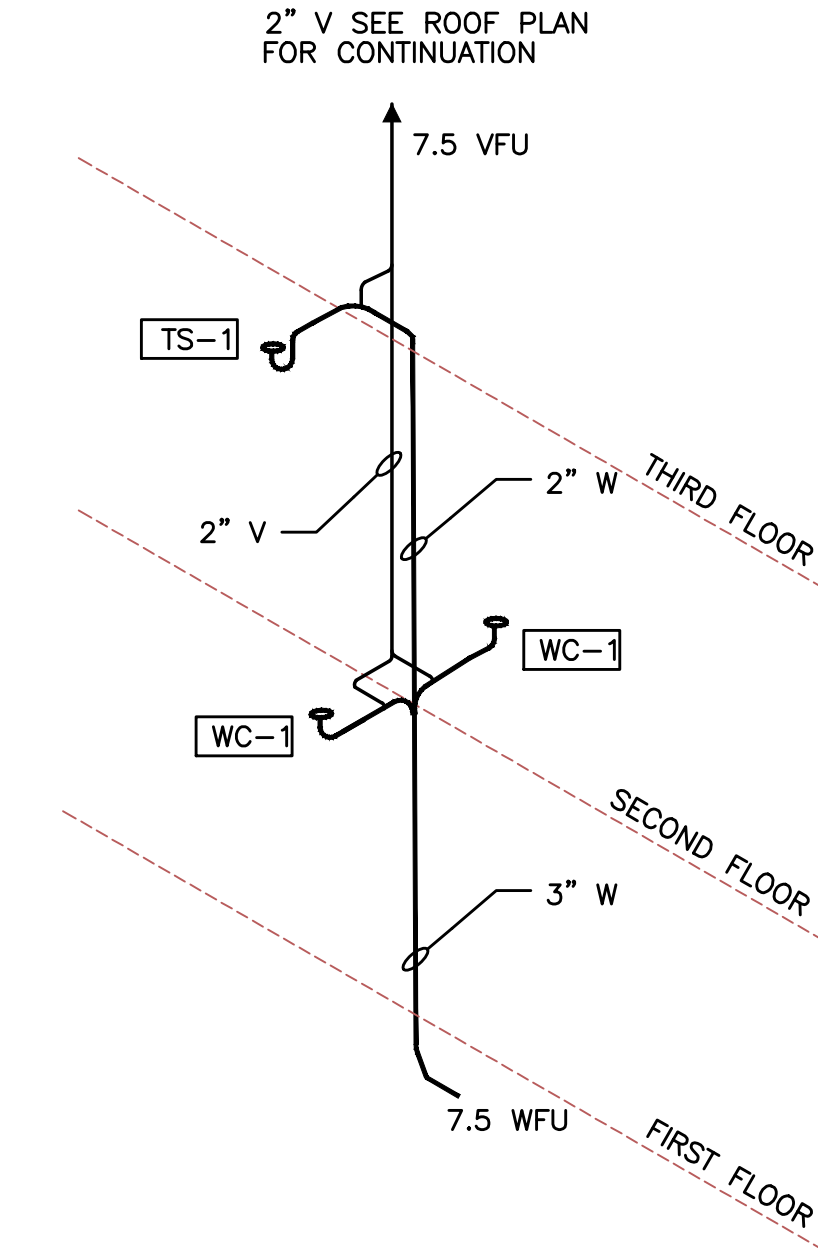
5 RISER "5" TYPICAL
P5.0 NOT TO SCALE



6 RISER "6" TYPICAL
P5.0 NOT TO SCALE



7 RISER "7" TYPICAL
P5.0 NOT TO SCALE



8 RISER "8" TYPICAL
P5.0 NOT TO SCALE

KING+PARKS MULTI-FAMILY RESIDENCES

PROJECT SITE: NE Martin Luther King Jr. Boulevard & N Rosa Parks Way
OWNER: Portland Community Reinvestment Initiatives Inc. (PCRI)
6329 NE Martin Luther King Jr. Blvd. Portland, Oregon 97211



PROJECT NO. 16-0602	ISSUE DATE 06.23.2017
REVISIONS	

SHEET
WASTE/VENT
RISERS
P5.0
NOT FOR CONSTRUCTION
PRICING SET
© MERRYMAN BARNES ARCHITECTS, INC.

M
E
A
Consulting Engineers
2007 S.E. Ash St.
Portland, OR 97214
PHN: (503) 234-0548
FAX: (503) 234-0677
INC. WWW.MEIA-ENG.COM
CONTACT: Takako Baker