

PRELIMINARY
NOT FOR
CONSTRUCTION

GENERAL NOTES:

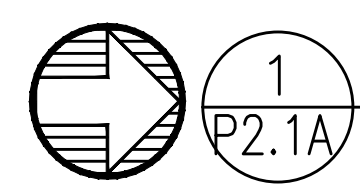
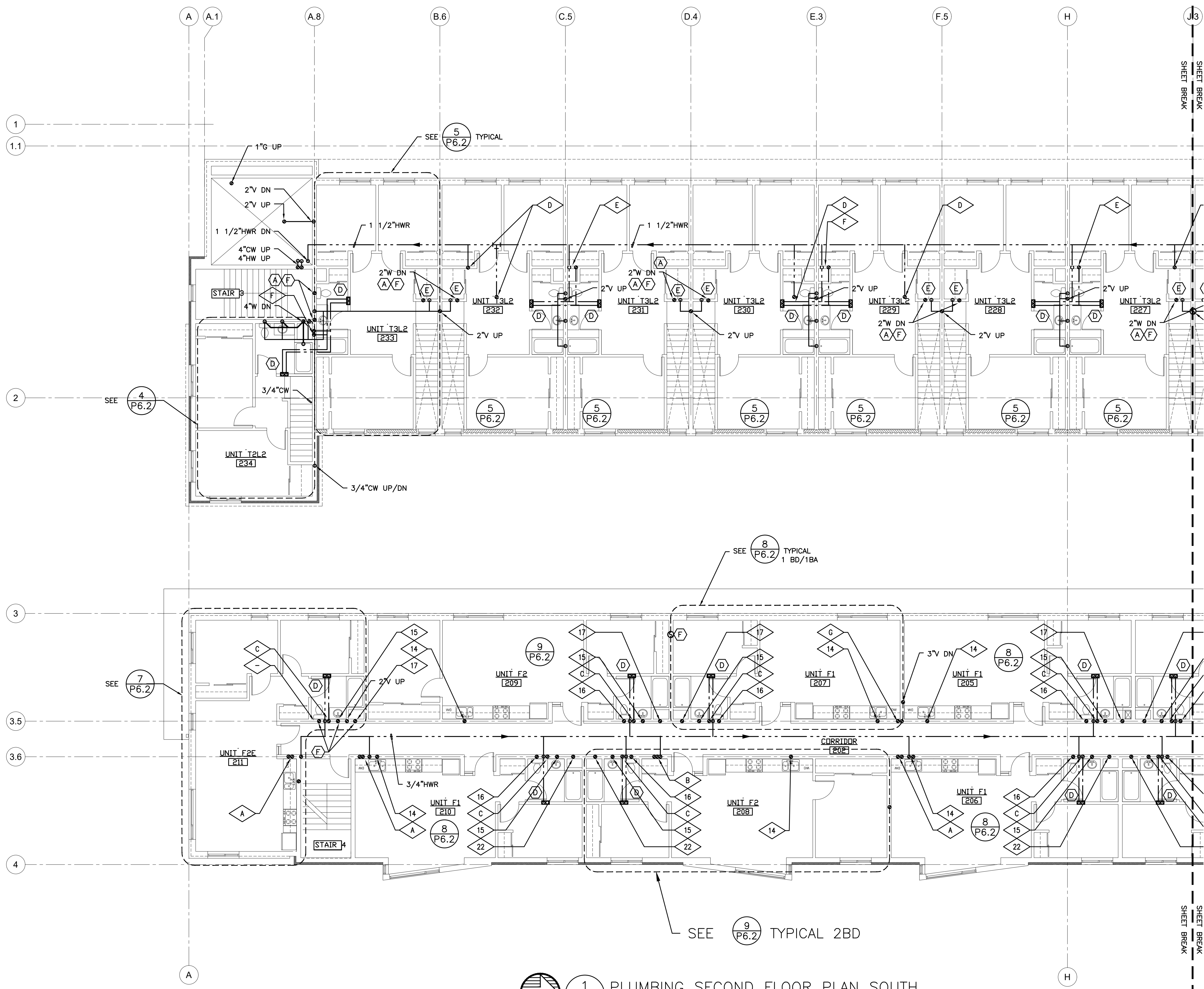
- A. ALL DOMESTIC WATER SUPPLY PIPING TO BE ROUTED ON CONDITIONED SIDE OF BUILDING INSULATION UNLESS OTHERWISE NOTED.
- B. ROUTE CONDENSATE DRAINS TO NEAREST SINK TAIL PIECE OR CLOTHES WASHER BOX.
- C. COORDINATE ALL PIPE ROUTING AND ROOF PENETRATIONS WITH MECHANICAL PRIOR TO STARTING WORK ALL AREAS.

KEYED NOTES:

- (A) - WASTE FROM FIXTURE STACK ABOVE, ROUTE TO BELOW
- (B) - SEE CIVIL FOR CONTINUATION.
- (C) - 1-1/2" HWR WITH BALANCING VALVE FOR EACH RISER STACK, SET BALANCING VALVES TO .75 GPM.
- (D) - SEE UNIT DISTRIBUTION DETAIL 3/P6.1.
- (E) - PROVIDE WASTE/VENT ROUGH-IN ONLY. CAP FOR FUTURE CONNECTION.
- (F) - OFFSET W AND V RISERS AS NEEDED FOR ROUTING
- (G) - DRAINAGE CONNECTIONS SHALL NOT BE MADE INTO A DRAINAGE PIPING SYSTEM WITHIN 8 FT OF ANY VERTICAL TO HORIZONTAL CHANGE OF DIRECTION OF A STACK CONTAINING A SUDS- PRODUCING FIXTURE. EXCEPTION: STACKS RECEIVING THE DISCHARGE FROM LESS THEN 3 STORIES OF PLUMBING FIXTURES.
- (H) - ROUTE VENT RISERS TO 3" VENT MANIFOLD. OFFSET AS REQUIRED AND COMBINE MULTIPLE VENT RISERS PRIOR TO VENTING THROUGH ROOF. COORDINATE VTR'S WITH ROOF TOP EQUIPMENT. TYPICAL.
- (J) - ROUTE 3/4" CONDENSATE DRAINS TO NEAREST LAVATORY TAIL PIECE.
- (K) - ROUTE 1/2" CONDENSATE DRAINS TO NEAREST LAVATORY TAIL PIECE.
- (L) - PROVIDE 3/4" CW WITH SHUT-OFF VALVE TO HOSE BIBB. SEE ARCHITECTURAL PLANS FOR EXACT HOSE BIBB LOCATION AND MOUNTING HEIGHT.
- (M) - PROVIDE 1" CW & 1" HW WITH SHUT-OFF VALVE(S) FOR LAUNDRY.
- (N) - OVERFLOW TO TERMINATE @ UNDERSIDE OF OVERHANG. CONNECT ROOF DRAIN TO DOWNSPOUT. SEE ARCHITECTURAL DETAILS FOR DOWNSPOUT INFORMATION.
- (P) - ROUTE PIPING EXPOSED ON WALL TO HOSE BIBB. PROVIDE SHUT VALVE AT ACCESSIBLE HEIGHT.
- (Q) - PROVIDE 6" ABS WASTE STUB OUT AT 2.0% MIN FOR CONNECTION BY CIVIL.

RISER DETAILS:

- SEE SHEET (X) FOR DOMESTIC WATER RISER DIAGRAMS
 (X) = RISER LETTER
 (ALPHABETIC)
- SEE SHEET (X) FOR WASTE/VENT RISER DIAGRAMS
 (#) = RISER NUMBER
 (NUMERICAL)



1 PLUMBING SECOND FLOOR PLAN SOUTH
 SCALE: 1/8" = 1'-0"

KING+PARKS MULTI-FAMILY RESIDENCES
 PROJECT SITE: NE Martin Luther King Jr. Boulevard & N Rosa Parks Way
 OWNER: Portland Community Reinvestment Initiatives Inc. (PCRI)
 6329 NE Martin Luther King Jr. Blvd. Portland, Oregon 97211

MERRYMAN BARNES ARCHITECTS 4715 ALBINA AVE SUITE 304 PORTLAND, OREGON 97217 P. 503.222.3733 WWW.MERRYMANBARNESARCHITECTS.COM



PROJECT NO. 16-0602
 ISSUE DATE 06.23.2017
 REVISIONS

SHEET
 PLUMBING SECOND FLOOR PLAN - SOUTH

P2.1A

NOT FOR CONSTRUCTION
PRICING SET
 © MERRYMAN BARNES ARCHITECTS, INC.