

1 BUILDING 2 - UNDER SLAB - PLUMBING PLAN
 P1.00 SCALE: 1/8" = 1'-0"

GENERAL NOTES:

DRAINAGE CONNECTIONS SHALL NOT BE MADE INTO A DRAINAGE PIPING SYSTEM WITHIN 8 FT OF ANY VERTICAL TO HORIZONTAL CHANGE OF DIRECTION OF A STACK CONTAINING A SUDS-PRODUCING FIXTURE.
 EXCEPTION: STACKS RECEIVING THE DISCHARGE FROM LESS THAN 3 STORIES OF PLUMBING FIXTURES

ROUTE ALL HVAC UNIT CONDENSATE DRAINS TO AN APPROVED LOCATION (OPTIONS LISTED BELOW)

- ROUTE ALL CONDENSATES DOWN IN WALLS IN COMMON DRAIN SYSTEM AND ROUTE TO OUTSIDE, TO MOP SINK OR CLOTHES WASHER BOX - CONTRACTOR TO SIZE DRAIN SYSTEM BASED ON NUMBER OF CONNECTED UNITS.
- PROVIDE CONDENSATE PUMPS ON ALL UNITS THAT ARE NOT GRAVITY DRAINED.

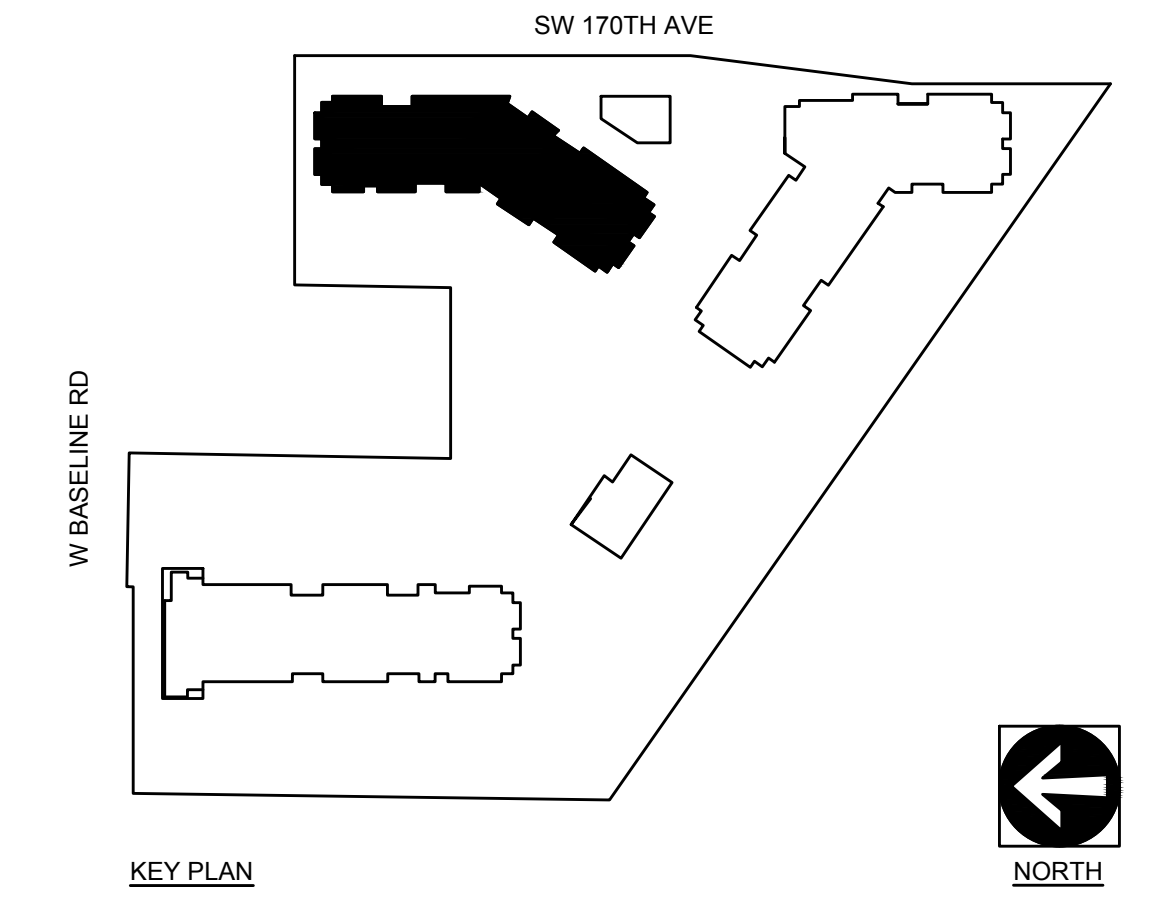
ROUTE VENTS FROM FLOOR DRAINS/SINKS BELOW SLAB AND UP ON/IN A WALL TO VENT STACKS ABOVE. (ROUTE INDIVIDUAL VENTS UNTIL ABOVE FLOOD LINE OF FIXTURE).

RISER DETAILS:

SEE SHEET **P4.00** FOR RISER DIAGRAMS
 X = RISER NUMBER

KEYED NOTES:

- POINT OF CONNECTION. SEE CIVIL FOR CONTINUATION
- SEE TYPICAL DOMESTIC SUPPLY RISER DIAGRAM 3/P6.00. PROVIDE ACCESS PANEL W/ UNIT SHUT-OFFS, TO BE LOCATED IN CLOSET OR BATHROOM CEILING. PROVIDE HWR SHUT OFF VALVE AT FIRST FLOOR UNITS.
- PROVIDE SHUT OFF VALVE W/ ACCESS LOCATED IN NEAREST UNIT. SEE ARCHITECTURAL FOR MOUNTING HEIGHT. COORDINATE WITH FACADE.
- SEE UNIT DISTRIBUTION DETAIL 4/P6.00. PROVIDE ACCESS PANEL AS REQ'D.
- HORIZONTAL WET VENT BATHROOM FIXTURES. SEE TYPICAL WASTE/VENT ROUTING EXAMPLE P1.03
- SEE PENINSULA SINK VENT DETAIL 7/P6.00.
- OFFSET WASTE/VENT/SUPPLY PIPING AS REQUIRED IN CEILING OR WALL JOIST SPACE OR BELOW SLAB. OFFSET VTR'S AS NEEDED.
- ROUTE VENT UP AND CONNECT TO 2" OR LARGER VENT RISER OR ROUTE TO ATTIC SPACE. COMBINE VENT RISERS BELOW ROOF AND VENT THROUGH ROOF.
- SEE GAS ISOMETRIC RISER DIAGRAM 8/P6.00.



09-28-22

MSI
 MECHANICAL SYSTEMS, INC.
 21185 NW EVERGREEN PARKWAY #201
 HILLSBORO, OR 97124
 PHONE: (503) 466-2222
 FAX: (503) 466-2211

THIS DRAWING WAS PREPARED EXCLUSIVELY FOR USE BY MSI MECHANICAL SYSTEMS, INC.

MFI Consulting Engineers
 3005 S.E. 48th St.
 Portland, OR 97214
 PHONE: (503) 231-0018
 FAX: (503) 231-0077
 INC. 90000001-ENG-C018
 CONTACT: Mark Denney

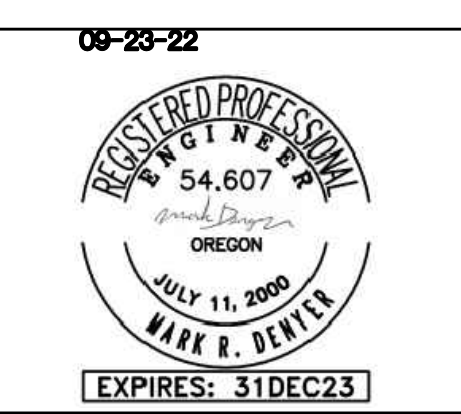
ELMONICA STATION APARTMENTS BUILDING 2
 SW 170TH AND W BASELINE
 REMBOLD PROPERTIES

REVISION	DATE	REASON FOR ISSUE

PLUMBING PLANS

PERMIT SET

DATE 09.23.2022	PROJECT NUMBER 215390
SHEET NUMBER P1.00-2	



MSI
MECHANICAL SYSTEMS, INC.
21165 NW EVERGREEN PARKWAY #201
HILLSBORO, OR 97124
PHONE: (503) 466-2222
FAX: (503) 466-2211
THIS DRAWING WAS PREPARED EXCLUSIVELY FOR USE BY MSI MECHANICAL SYSTEMS, INC.

MFI Consulting Engineers
3005 S.E. 48th St.
Portland, OR 97214
PHONE: (503) 234-0048
FAX: (503) 234-0077
INC. 3005 S.E. 48th St.
CONTACT: Mark Denney

ELMONICA STATION APARTMENTS BUILDING 2
SW 170TH AND W BASELINE
REMBOLD PROPERTIES

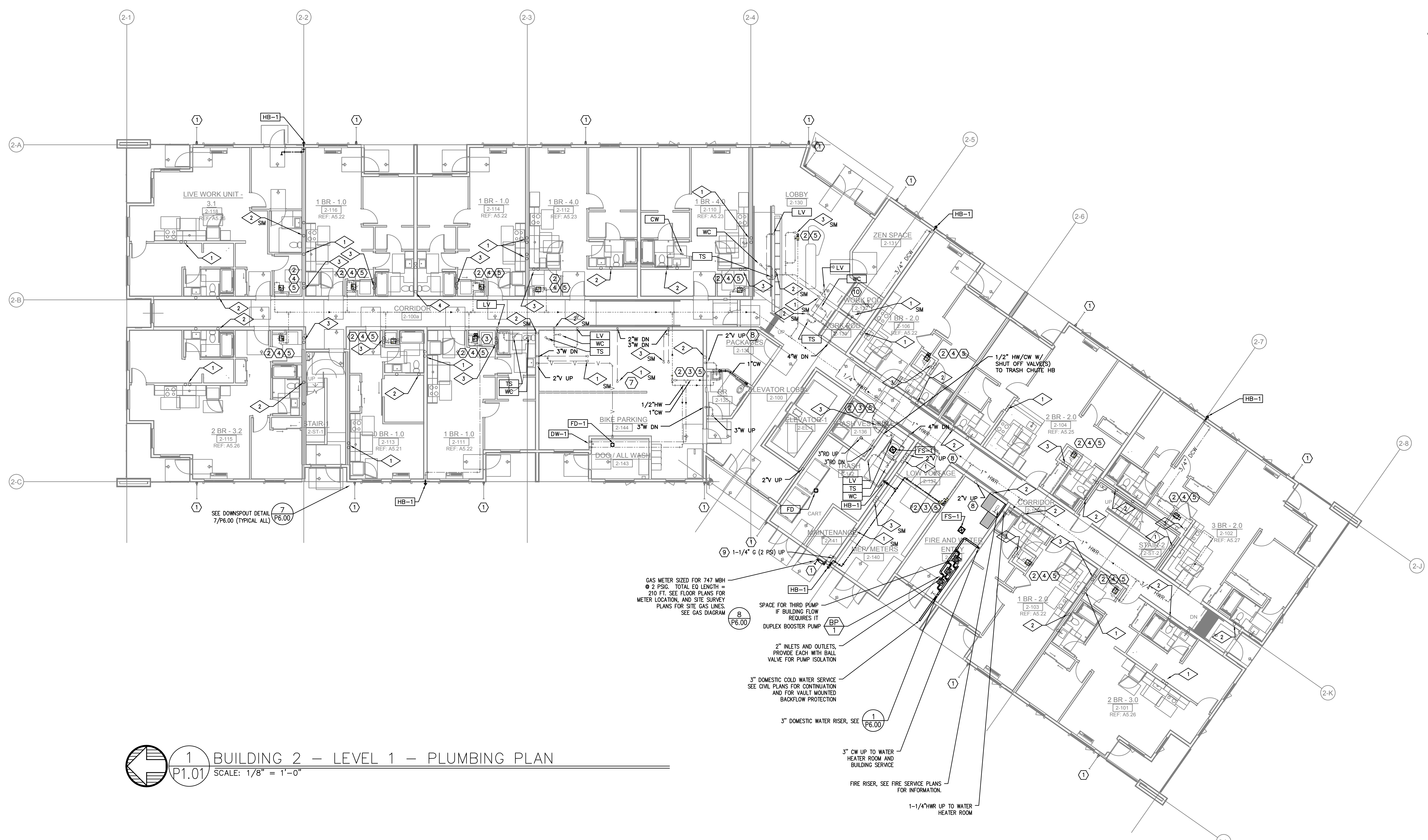
REVISION	DATE	REASON FOR ISSUE

PLUMBING PLANS

PERMIT SET

DATE: 09.23.2022 PROJECT NUMBER: 215390

SHEET NUMBER: P1.01-2



1 BUILDING 2 - LEVEL 1 - PLUMBING PLAN
P1.01 SCALE: 1/8" = 1'-0"

GENERAL NOTES:

DRAINAGE CONNECTIONS SHALL NOT BE MADE INTO A DRAINAGE PIPING SYSTEM WITHIN 8 FT OF ANY VERTICAL TO HORIZONTAL CHANGE OF DIRECTION OF A STACK CONTAINING A SUDS-PRODUCING FIXTURE. EXCEPTION: STACKS RECEIVING THE DISCHARGE FROM LESS THAN 3 STORIES OF PLUMBING FIXTURES

ROUTE ALL HVAC UNIT CONDENSATE DRAINS TO AN APPROVED LOCATION (OPTIONS LISTED BELOW)

- ROUTE ALL CONDENSATES DOWN IN WALLS IN COMMON DRAIN SYSTEM AND ROUTE TO OUTSIDE, TO MOP SINK OR CLOTHES WASHER BOX - CONTRACTOR TO SIZE DRAIN SYSTEM BASED ON NUMBER OF CONNECTED UNITS.
- PROVIDE CONDENSATE PUMPS ON ALL UNITS THAT ARE NOT GRAVITY DRAINED.

ROUTE VENTS FROM FLOOR DRAINS/SINKS BELOW SLAB AND UP ON/IN A WALL TO VENT STACKS ABOVE. (ROUTE INDIVIDUAL VENTS UNTIL ABOVE FLOOD LINE OF FIXTURE).

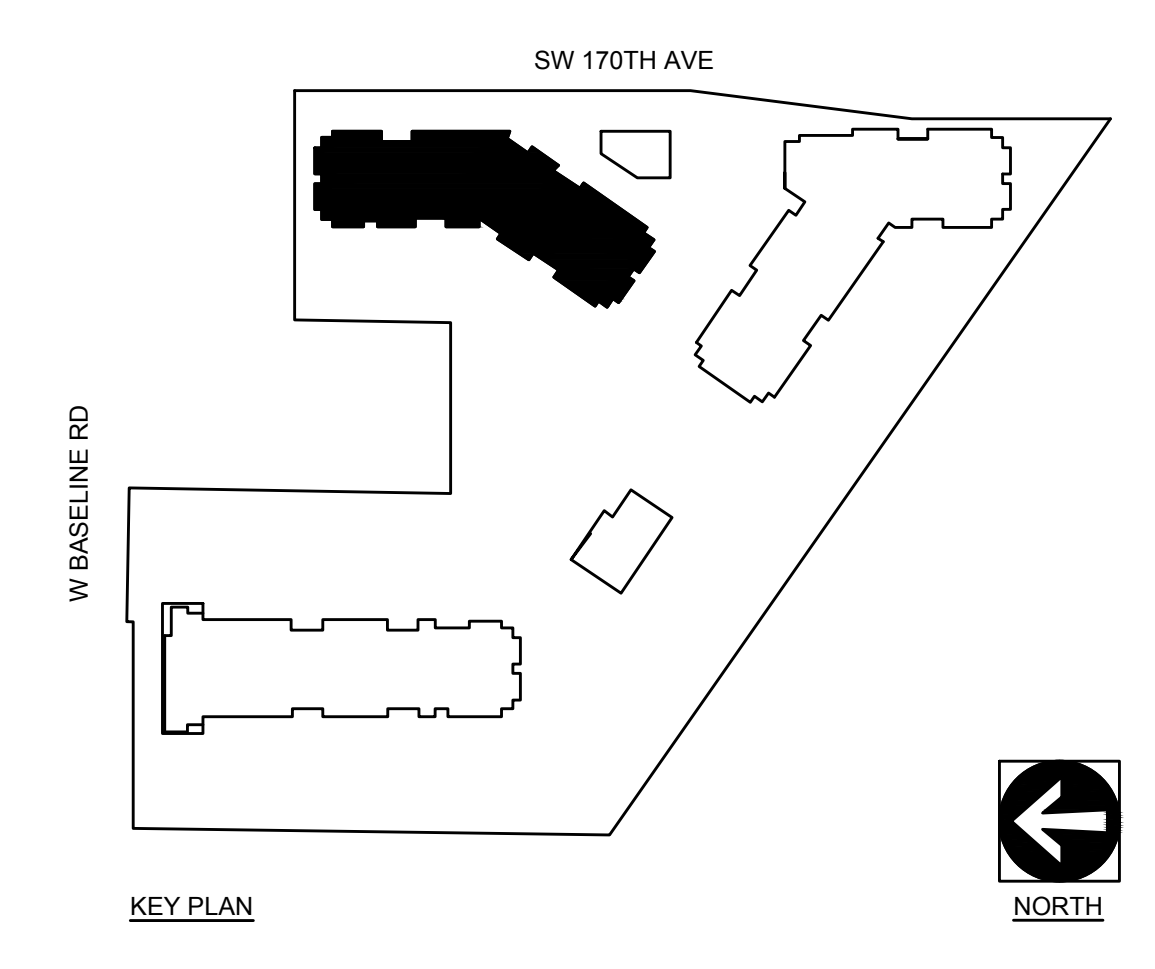
RISER DETAILS:

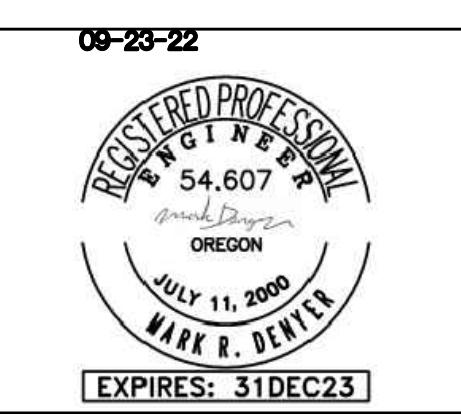
SEE SHEET **X** FOR RISER DIAGRAMS
24.00

= RISER NUMBER

KEYED NOTES:

- ① - POINT OF CONNECTION. SEE CIVIL FOR CONTINUATION
- ② - SEE TYPICAL DOMESTIC SUPPLY RISER DIAGRAM 3/P6.00. PROVIDE ACCESS PANEL W/ UNIT SHUT-OFFS, TO BE LOCATED IN CLOSET OR BATHROOM CEILING. PROVIDE HWR SHUT OFF VALVE AT FIRST FLOOR UNITS.
- ③ - PROVIDE SHUT OFF VALVE W/ ACCESS LOCATED IN NEAREST UNIT. SEE ARCHITECTURAL FOR MOUNTING HEIGHT. COORDINATE WITH FACADE.
- ④ - SEE UNIT DISTRIBUTION DETAIL 4/P6.00. PROVIDE ACCESS PANEL AS REQ'D.
- ⑤ - HORIZONTAL WET VENT BATHROOM FIXTURES. SEE TYPICAL WASTE/VENT ROUTING EXAMPLE P1.03
- ⑥ - SEE PENINSULA SINK VENT DETAIL 7/P6.00.
- ⑦ - OFFSET WASTE/VENT/SUPPLY PIPING AS REQUIRED IN CEILING OR WALL JOIST SPACE OR BELOW SLAB. OFFSET VTR'S AS NEEDED.
- ⑧ - ROUTE VENT UP AND CONNECT TO 2" OR LARGER VENT RISER OR ROUTE TO ATTIC SPACE. COMBINE VENT RISERS BELOW ROOF AND VENT THROUGH ROOF.
- ⑨ - SEE GAS ISOMETRIC RISER DIAGRAM 8/P6.00.





MSI
MECHANICAL SYSTEMS, INC.
21165 NW EVERGREEN PARKWAY #201
HILLSBORO, OR 97124
PHONE: (503) 466-2222
FAX: (503) 466-2211
THIS DRAWING WAS PREPARED EXCLUSIVELY FOR USE BY MSI MECHANICAL SYSTEMS, INC.

MFI Consulting Engineers
3005 S.E. 44th St.
Portland, OR 97214
PHONE: (503) 234-0048
FAX: (503) 234-0077
INC. 3005 S.E. 44th St.
CONTACT: Mark Dierker

ELMONICA STATION APARTMENTS BUILDING 2
SW 170TH AND W BASELINE
REMBOLD PROPERTIES

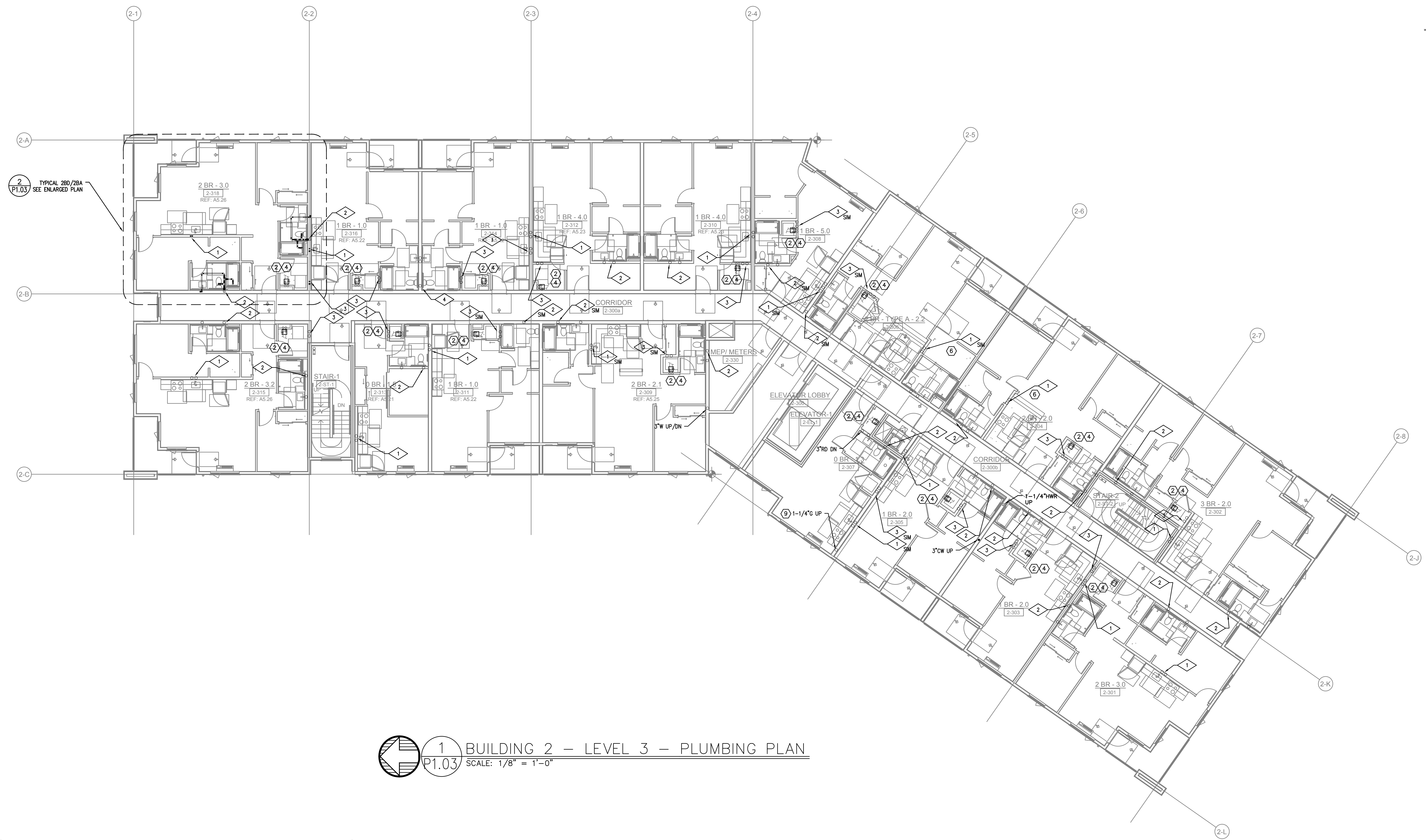
REVISION	DATE	REASON FOR ISSUE

PLUMBING PLANS

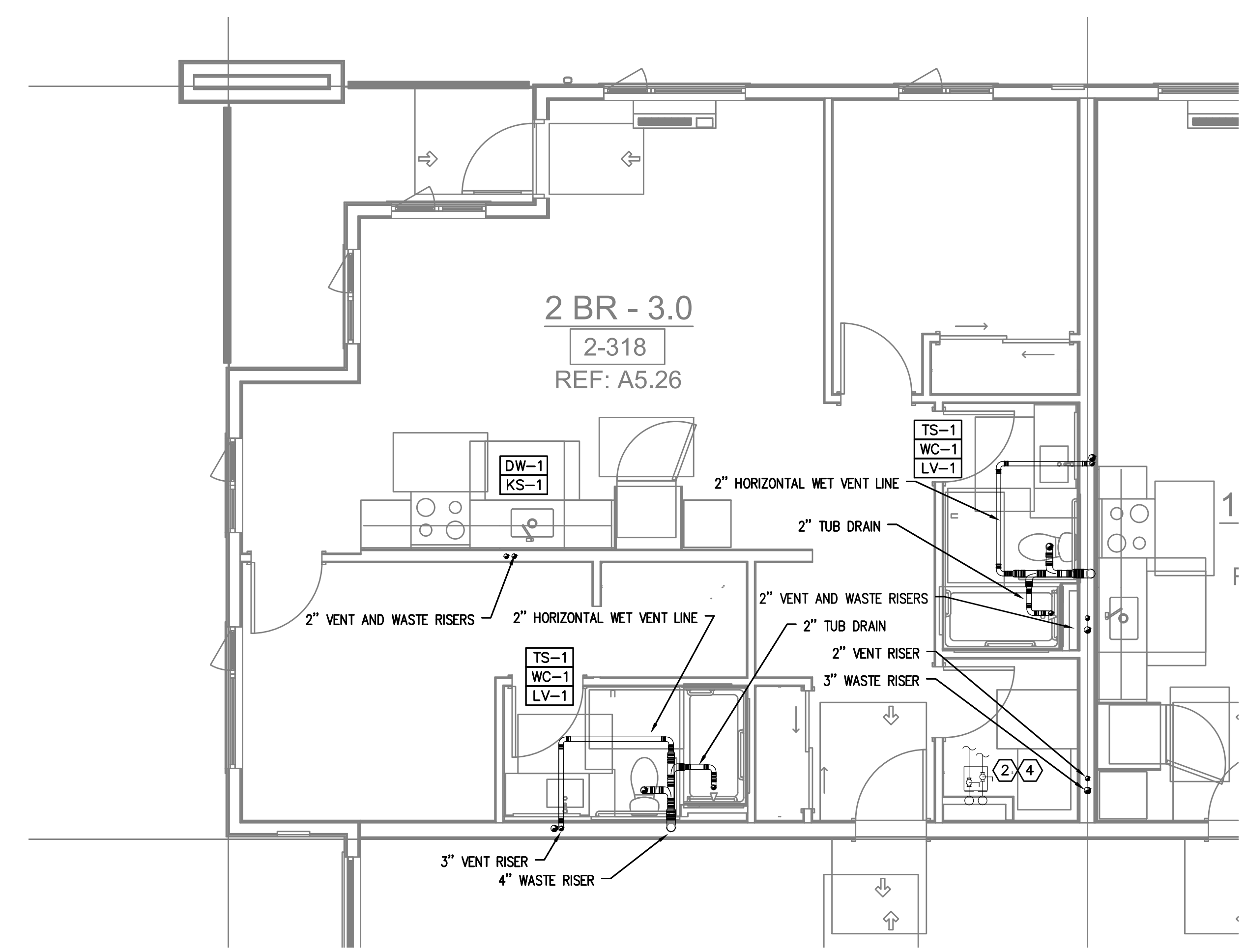
PERMIT SET

DATE: 09.23.2022 PROJECT NUMBER: 215390

SHEET NUMBER: P1.03-2



1 BUILDING 2 - LEVEL 3 - PLUMBING PLAN
P1.03 SCALE: 1/8" = 1'-0"



2 BUILDING 2 - ENLARGED UNIT - PLUMBING PLAN
P1.03 SCALE: 1/4" = 1'-0"

GENERAL NOTES:

DRAINAGE CONNECTIONS SHALL NOT BE MADE INTO A DRAINAGE PIPING SYSTEM WITHIN 8 FT OF ANY VERTICAL TO HORIZONTAL CHANGE OF DIRECTION OF A STACK CONTAINING A SUDS-PRODUCING FIXTURE.
EXCEPTION: STACKS RECEIVING THE DISCHARGE FROM LESS THAN 3 STORIES OF PLUMBING FIXTURES

ROUTE ALL HVAC UNIT CONDENSATE DRAINS TO AN APPROVED LOCATION (OPTIONS LISTED BELOW)

- ROUTE ALL CONDENSATES DOWN IN WALLS IN COMMON DRAIN SYSTEM AND ROUTE TO OUTSIDE, TO MOP SINK OR CLOTHES WASHER BOX - CONTRACTOR TO SIZE DRAIN SYSTEM BASED ON NUMBER OF CONNECTED UNITS.
- PROVIDE CONDENSATE PUMPS ON ALL UNITS THAT ARE NOT GRAVITY DRAINED.

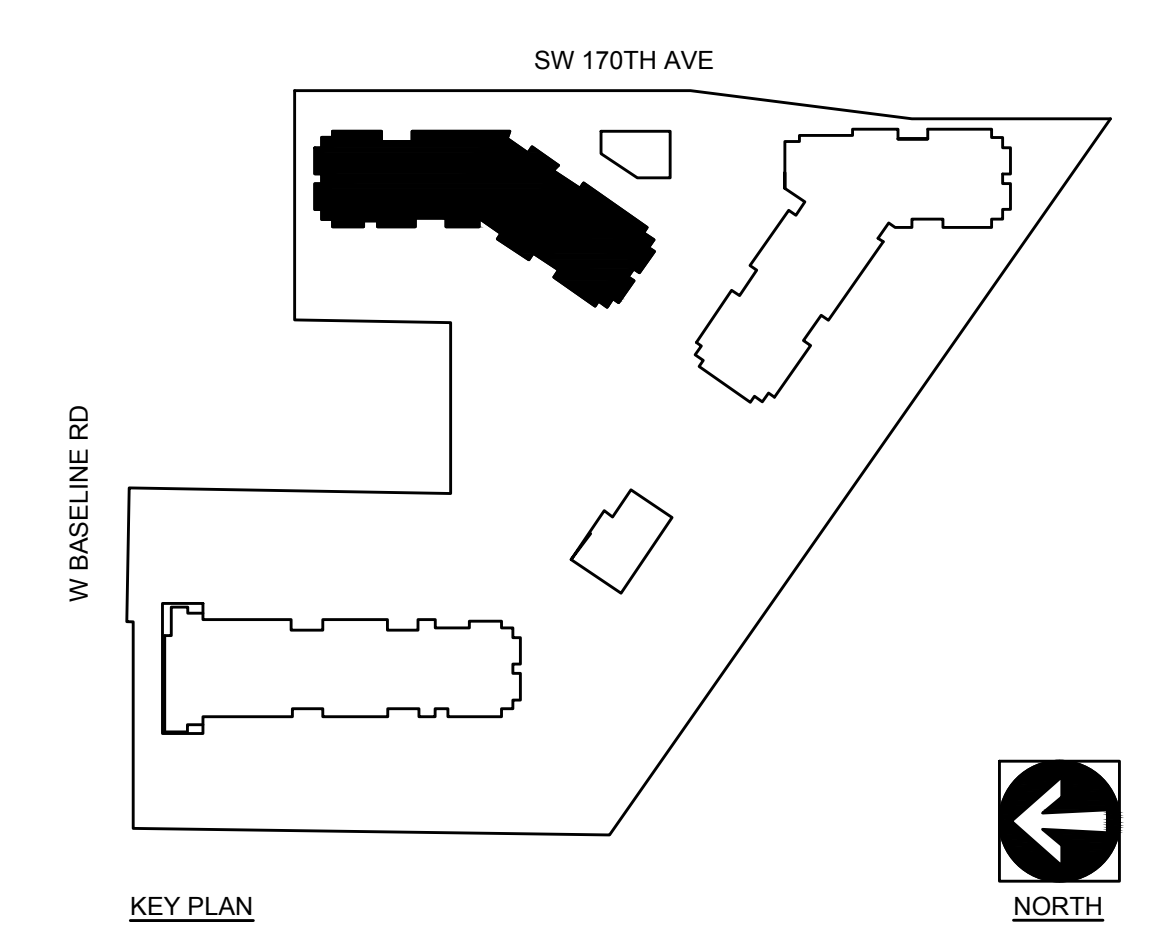
ROUTE VENTS FROM FLOOR DRAINS/SINKS BELOW SLAB AND UP ON/IN A WALL TO VENT STACKS ABOVE. (ROUTE INDIVIDUAL VENTS UNTIL ABOVE FLOOD LINE OF FIXTURE).

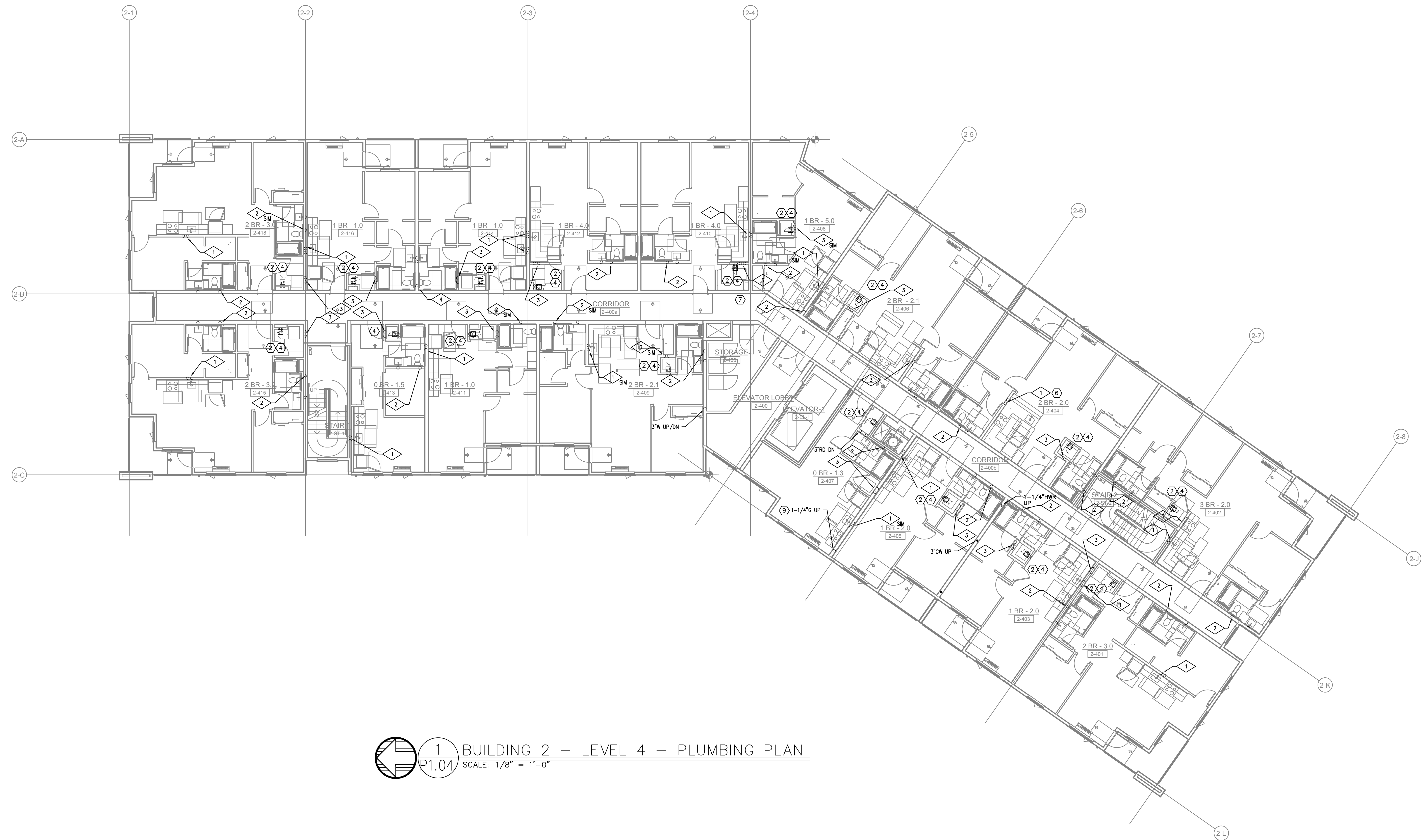
RISER DETAILS:

SEE SHEET **P4.00** FOR RISER DIAGRAMS
- = RISER NUMBER

KEYED NOTES:

- POINT OF CONNECTION. SEE CIVIL FOR CONTINUATION
- SEE TYPICAL DOMESTIC SUPPLY RISER DIAGRAM 3/P6.00. PROVIDE ACCESS PANEL W/ UNIT SHUT-OFFS, TO BE LOCATED IN CLOSET OR BATHROOM CEILING. PROVIDE HWR SHUT OFF VALVE AT FIRST FLOOR UNITS.
- PROVIDE SHUT OFF VALVE W/ ACCESS LOCATED IN NEAREST UNIT. SEE ARCHITECTURAL FOR MOUNTING HEIGHT. COORDINATE WITH FACADE.
- SEE UNIT DISTRIBUTION DETAIL 4/P6.00. PROVIDE ACCESS PANEL AS REQ'D.
- HORIZONTAL WET VENT BATHROOM FIXTURES. SEE TYPICAL WASTE/VENT ROUTING EXAMPLE P1.03
- SEE PENINSULA SINK VENT DETAIL 7/P6.00.
- OFFSET WASTE/VENT/SUPPLY PIPING AS REQUIRED IN CEILING OR WALL JOIST SPACE OR BELOW SLAB. OFFSET VTR'S AS NEEDED.
- ROUTE VENT UP AND CONNECT TO 2" OR LARGER VENT RISER OR ROUTE TO ATTIC SPACE. COMBINE VENT RISERS BELOW ROOF AND VENT THROUGH ROOF.
- SEE GAS ISOMETRIC RISER DIAGRAM 8/P6.00.





1 BUILDING 2 -- LEVEL 4 -- PLUMBING PLAN
 P1.04 SCALE: 1/8" = 1'-0"

GENERAL NOTES:

DRAINAGE CONNECTIONS SHALL NOT BE MADE INTO A DRAINAGE PIPING SYSTEM WITHIN 8 FT OF ANY VERTICAL TO HORIZONTAL CHANGE OF DIRECTION OF A STACK CONTAINING A SUDS-PRODUCING FIXTURE.
 EXCEPTION: STACKS RECEIVING THE DISCHARGE FROM LESS THAN 3 STORIES OF PLUMBING FIXTURES

ROUTE ALL HVAC UNIT CONDENSATE DRAINS TO AN APPROVED LOCATION (OPTIONS LISTED BELOW)

- ROUTE ALL CONDENSATES DOWN IN WALLS IN COMMON DRAIN SYSTEM AND ROUTE TO OUTSIDE, TO MOP SINK OR CLOTHES WASHER BOX - CONTRACTOR TO SIZE DRAIN SYSTEM BASED ON NUMBER OF CONNECTED UNITS.
- PROVIDE CONDENSATE PUMPS ON ALL UNITS THAT ARE NOT GRAVITY DRAINED.

ROUTE VENTS FROM FLOOR DRAINS/SINKS BELOW SLAB AND UP ON/IN A WALL TO VENT STACKS ABOVE. (ROUTE INDIVIDUAL VENTS UNTIL ABOVE FLOOD LINE OF FIXTURE).

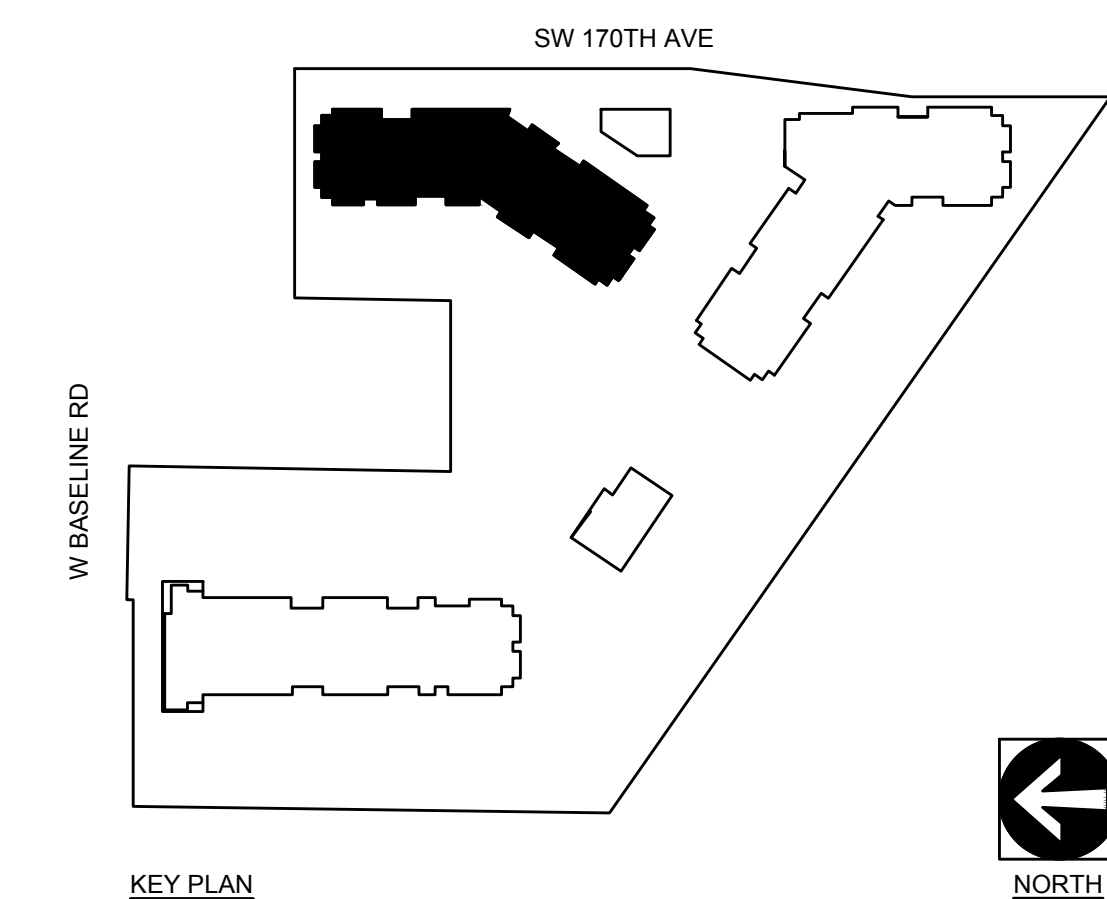
RISER DETAILS:

SEE SHEET **X** FOR RISER DIAGRAMS

24.00
 = RISER NUMBER

KEYED NOTES:

- 1 - POINT OF CONNECTION. SEE CIVIL FOR CONTINUATION
- 2 - SEE TYPICAL DOMESTIC SUPPLY RISER DIAGRAM 3/P6.00. PROVIDE ACCESS PANEL W/ UNIT SHUT-OFFS, TO BE LOCATED IN CLOSET OR BATHROOM CEILING. PROVIDE HWR SHUT OFF VALVE AT FIRST FLOOR UNITS.
- 3 - PROVIDE SHUT OFF VALVE W/ ACCESS LOCATED IN NEAREST UNIT. SEE ARCHITECTURAL FOR MOUNTING HEIGHT. COORDINATE WITH FACADE.
- 4 - SEE UNIT DISTRIBUTION DETAIL 4/P6.00. PROVIDE ACCESS PANEL AS REQ'D.
- 5 - HORIZONTAL WET VENT BATHROOM FIXTURES. SEE TYPICAL WASTE/VENT ROUTING EXAMPLE P1.03
- 6 - SEE PENINSULA SINK VENT DETAIL 7/P6.00.
- 7 - OFFSET WASTE/VENT/SUPPLY PIPING AS REQUIRED IN CEILING OR WALL JOIST SPACE OR BELOW SLAB. OFFSET VTR'S AS NEEDED.
- 8 - ROUTE VENT UP AND CONNECT TO 2" OR LARGER VENT RISER OR ROUTE TO ATTIC SPACE. COMBINE VENT RISERS BELOW ROOF AND VENT THROUGH ROOF.
- 9 - SEE GAS ISOMETRIC RISER DIAGRAM 8/P6.00.



MECHANICAL SYSTEMS, INC.
 21185 NW EVERGREEN PARKWAY #201
 HILLSBORO, OR 97124
 PHONE: (503) 466-2222
 FAX: (503) 466-2211

EXPIRES: 31DEC23

THIS DRAWING WAS PREPARED EXCLUSIVELY FOR USE BY MSI MECHANICAL SYSTEMS, INC.

Consulting Engineers
 3005 S.E. 44th St.
 Portland, OR 97214
 PHN: (503) 231-0518
 FAX: (503) 231-0077
 INC. NUMBER: ENG 0018
 CONTACT: Mark Denner

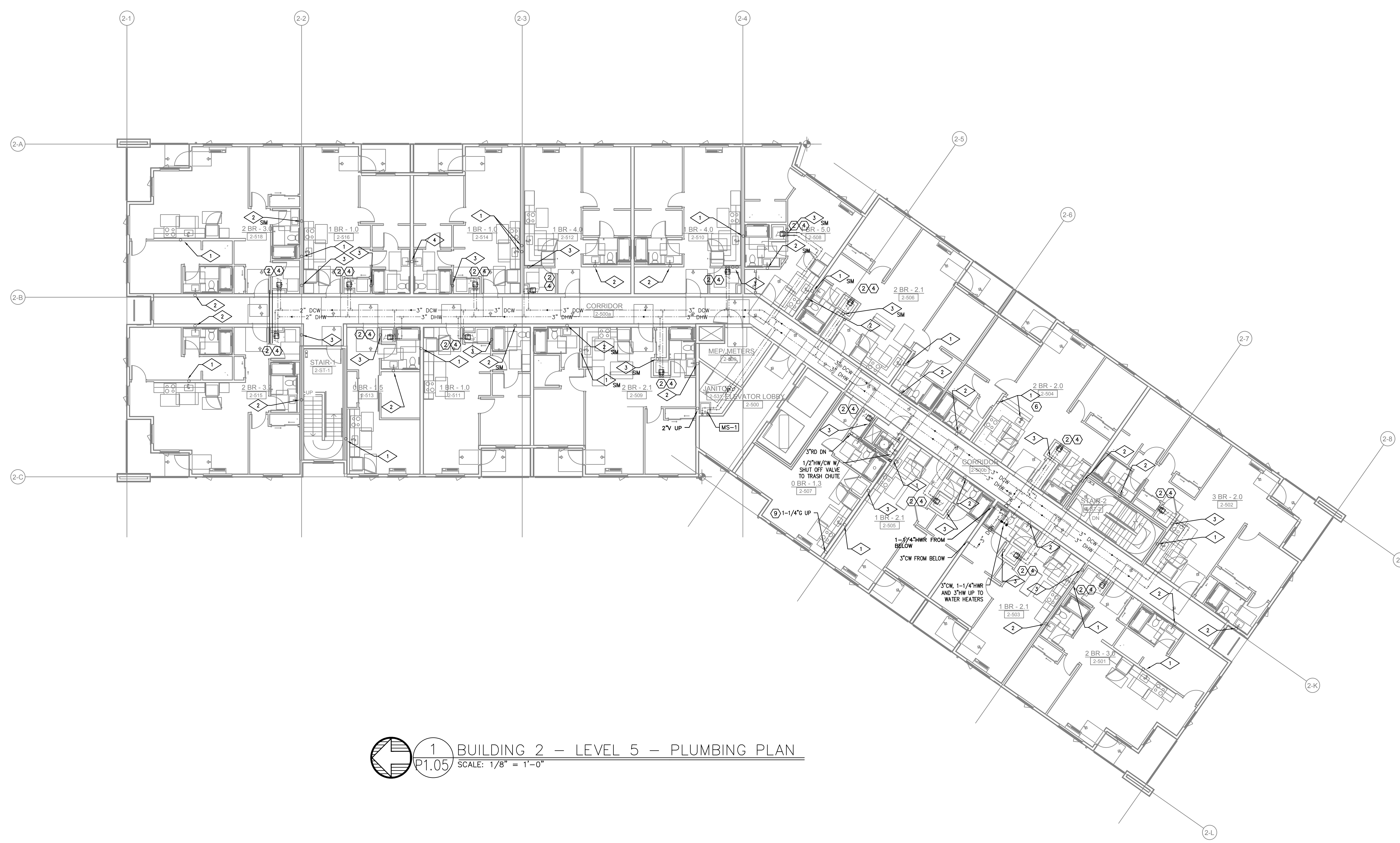
ELMONICA STATION APARTMENTS BUILDING 2
 SW 170TH AND W BASELINE
 REMBOLD PROPERTIES

REVISION	DATE	REASON FOR ISSUE

PLUMBING PLANS

PERMIT SET

DATE: 09.23.2022 PROJECT NUMBER: 215390
 SHEET NUMBER: P1.04-2



1 BUILDING 2 – LEVEL 5 – PLUMBING PLAN
 P1.05 SCALE: 1/8" = 1'-0"

GENERAL NOTES:

DRAINAGE CONNECTIONS SHALL NOT BE MADE INTO A DRAINAGE PIPING SYSTEM WITHIN 8 FT OF ANY VERTICAL TO HORIZONTAL CHANGE OF DIRECTION OF A STACK CONTAINING A SUDS-PRODUCING FIXTURE.
 EXCEPTION: STACKS RECEIVING THE DISCHARGE FROM LESS THAN 3 STORIES OF PLUMBING FIXTURES

ROUTE ALL HVAC UNIT CONDENSATE DRAINS TO AN APPROVED LOCATION (OPTIONS LISTED BELOW)

- ROUTE ALL CONDENSATES DOWN IN WALLS IN COMMON DRAIN SYSTEM AND ROUTE TO OUTSIDE, TO MOP SINK OR CLOTHES WASHER BOX – CONTRACTOR TO SIZE DRAIN SYSTEM BASED ON NUMBER OF CONNECTED UNITS.
- PROVIDE CONDENSATE PUMPS ON ALL UNITS THAT ARE NOT GRAVITY DRAINED.

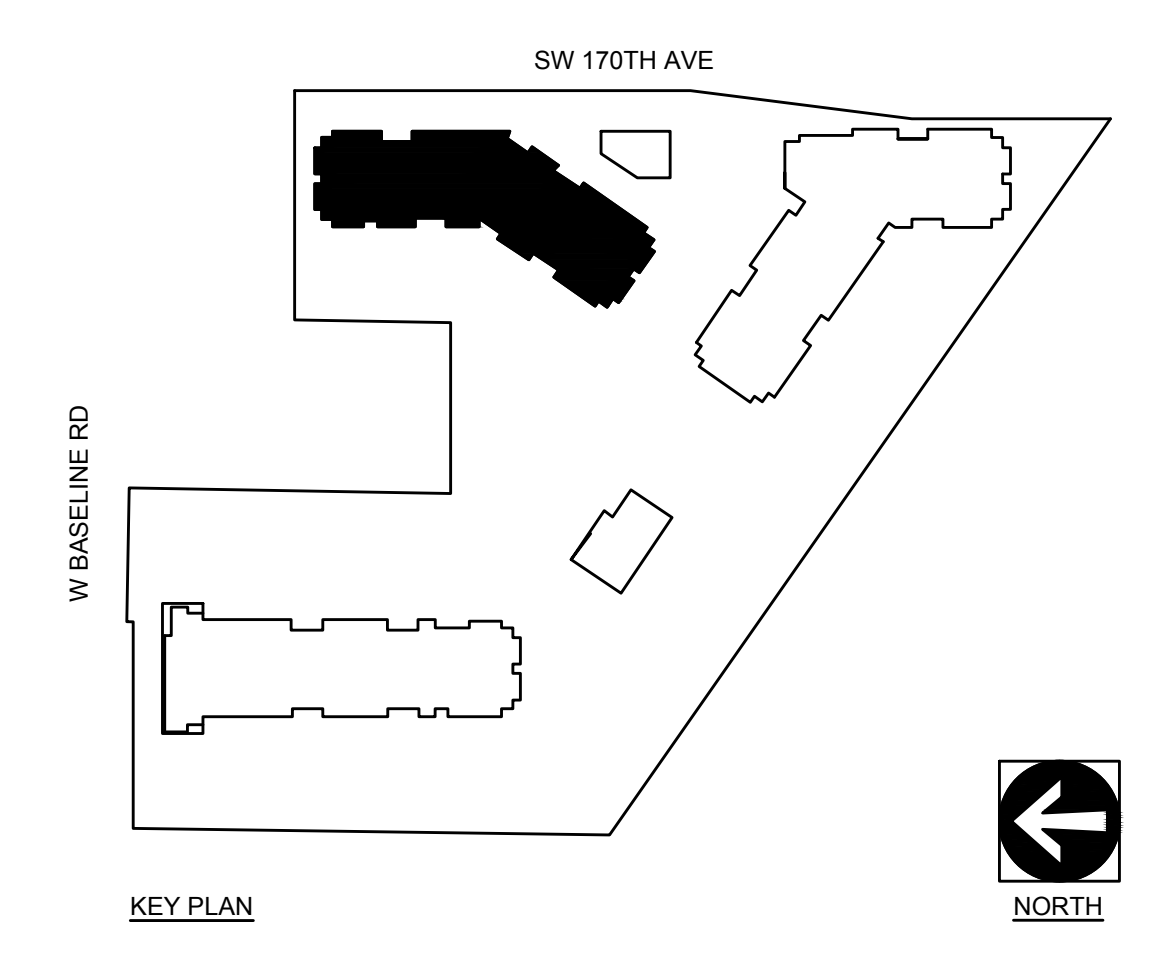
ROUTE VENTS FROM FLOOR DRAINS/SINKS BELOW SLAB AND UP ON/IN A WALL TO VENT STACKS ABOVE. (ROUTE INDIVIDUAL VENTS UNTIL ABOVE FLOOD LINE OF FIXTURE).

RISER DETAILS:

SEE SHEET **X** FOR RISER DIAGRAMS
 P4.00
 ◊ = RISER NUMBER

KEYED NOTES:

- ① – POINT OF CONNECTION. SEE CIVIL FOR CONTINUATION
- ② – SEE TYPICAL DOMESTIC SUPPLY RISER DIAGRAM 3/P6.00. PROVIDE ACCESS PANEL W/ UNIT SHUT-OFFS, TO BE LOCATED IN CLOSET OR BATHROOM CEILING. PROVIDE HWR SHUT OFF VALVE AT FIRST FLOOR UNITS.
- ③ – PROVIDE SHUT OFF VALVE W/ ACCESS LOCATED IN NEAREST UNIT. SEE ARCHITECTURAL FOR MOUNTING HEIGHT. COORDINATE WITH FACADE.
- ④ – SEE UNIT DISTRIBUTION DETAIL 4/P6.00. PROVIDE ACCESS PANEL AS REQ'D.
- ⑤ – HORIZONTAL WET VENT BATHROOM FIXTURES. SEE TYPICAL WASTE/VENT ROUTING EXAMPLE P1.03
- ⑥ – SEE PENINSULA SINK VENT DETAIL 7/P6.00.
- ⑦ – OFFSET WASTE/VENT/SUPPLY PIPING AS REQUIRED IN CEILING OR WALL JOIST SPACE OR BELOW SLAB. OFFSET VTR'S AS NEEDED.
- ⑧ – ROUTE VENT UP AND CONNECT TO 2" OR LARGER VENT RISER OR ROUTE TO ATTIC SPACE. COMBINE VENT RISERS BELOW ROOF AND VENT THROUGH ROOF.
- ⑨ – SEE GAS ISOMETRIC RISER DIAGRAM 8/P6.00.



09-28-22

MSI
 MECHANICAL SYSTEMS, INC.
 21185 NW EVERGREEN PARKWAY #201
 HILLSBORO, OR 97124
 PHONE: (503) 466-2222
 FAX: (503) 466-2211
 THIS DRAWING WAS PREPARED EXCLUSIVELY FOR USE BY MSI MECHANICAL SYSTEMS, INC.

M Consulting Engineers
 3005 S.E. 48th St.
 Portland, OR 97214
 PHN: (503) 234-0518
 FAX: (503) 234-0077
INC 3700 NE 113th Ave
 CONTACT: Mark Denner

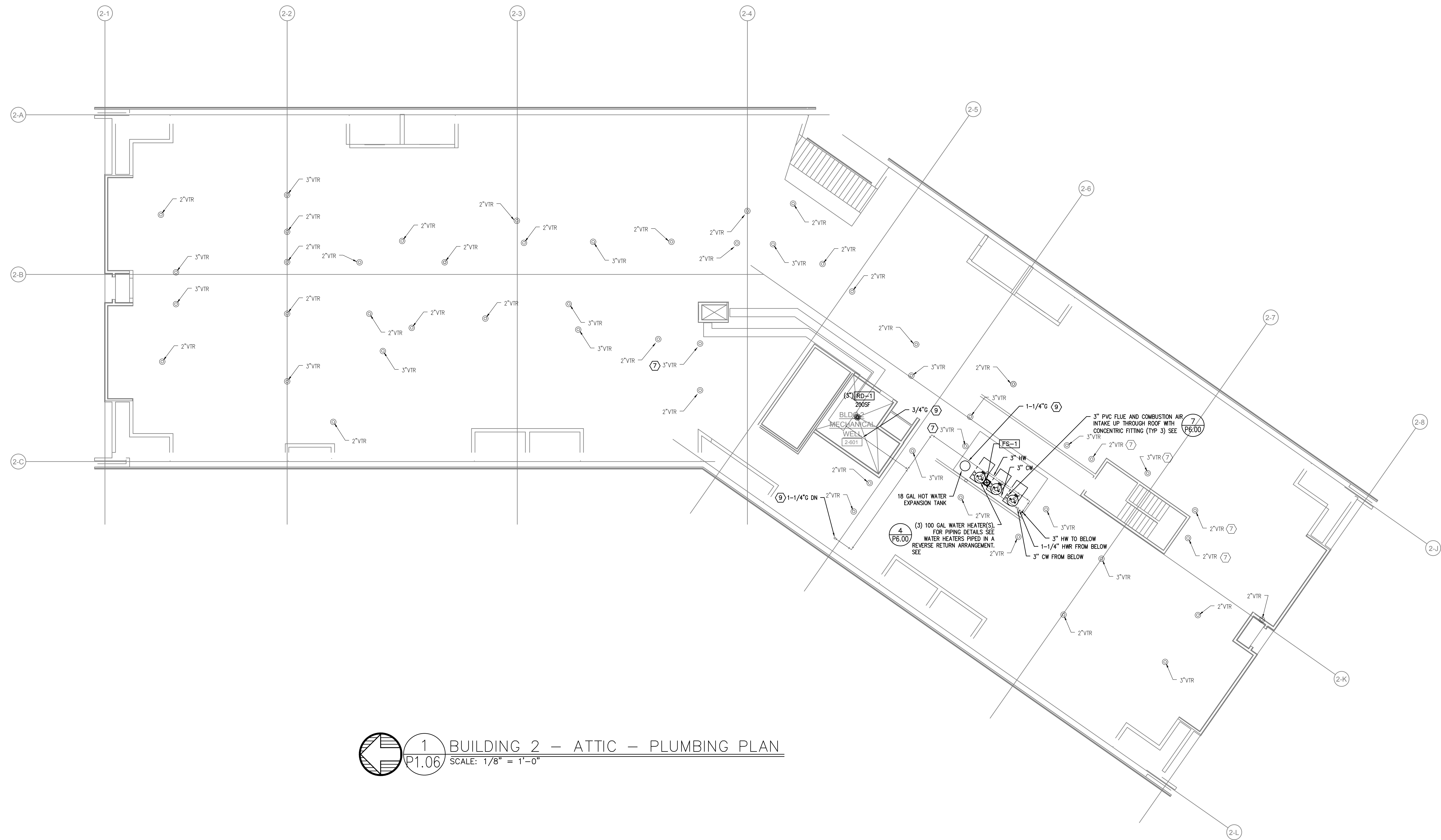
ELMONICA STATION APARTMENTS BUILDING 2
 SW 170TH AND W BASELINE
 REMBOLD PROPERTIES

REVISION	DATE	REASON FOR ISSUE

PLUMBING PLANS

PERMIT SET

DATE: 09.23.2022 PROJECT NUMBER: 215390
 SHEET NUMBER: P1.05-2



1 BUILDING 2 - ATTIC - PLUMBING PLAN
 P1.06 SCALE: 1/8" = 1'-0"

GENERAL NOTES:

DRAINAGE CONNECTIONS SHALL NOT BE MADE INTO A DRAINAGE PIPING SYSTEM WITHIN 8 FT OF ANY VERTICAL TO HORIZONTAL CHANGE OF DIRECTION OF A STACK CONTAINING A SUDS-PRODUCING FIXTURE. EXCEPTION: STACKS RECEIVING THE DISCHARGE FROM LESS THAN 3 STORIES OF PLUMBING FIXTURES

ROUTE ALL HVAC UNIT CONDENSATE DRAINS TO AN APPROVED LOCATION (OPTIONS LISTED BELOW)

- ROUTE ALL CONDENSATES DOWN IN WALLS IN COMMON DRAIN SYSTEM AND ROUTE TO OUTSIDE. TO MOP SINK OR CLOTHES WASHER BOX - CONTRACTOR TO SIZE DRAIN SYSTEM BASED ON NUMBER OF CONNECTED UNITS.
- PROVIDE CONDENSATE PUMPS ON ALL UNITS THAT ARE NOT GRAVITY DRAINED.

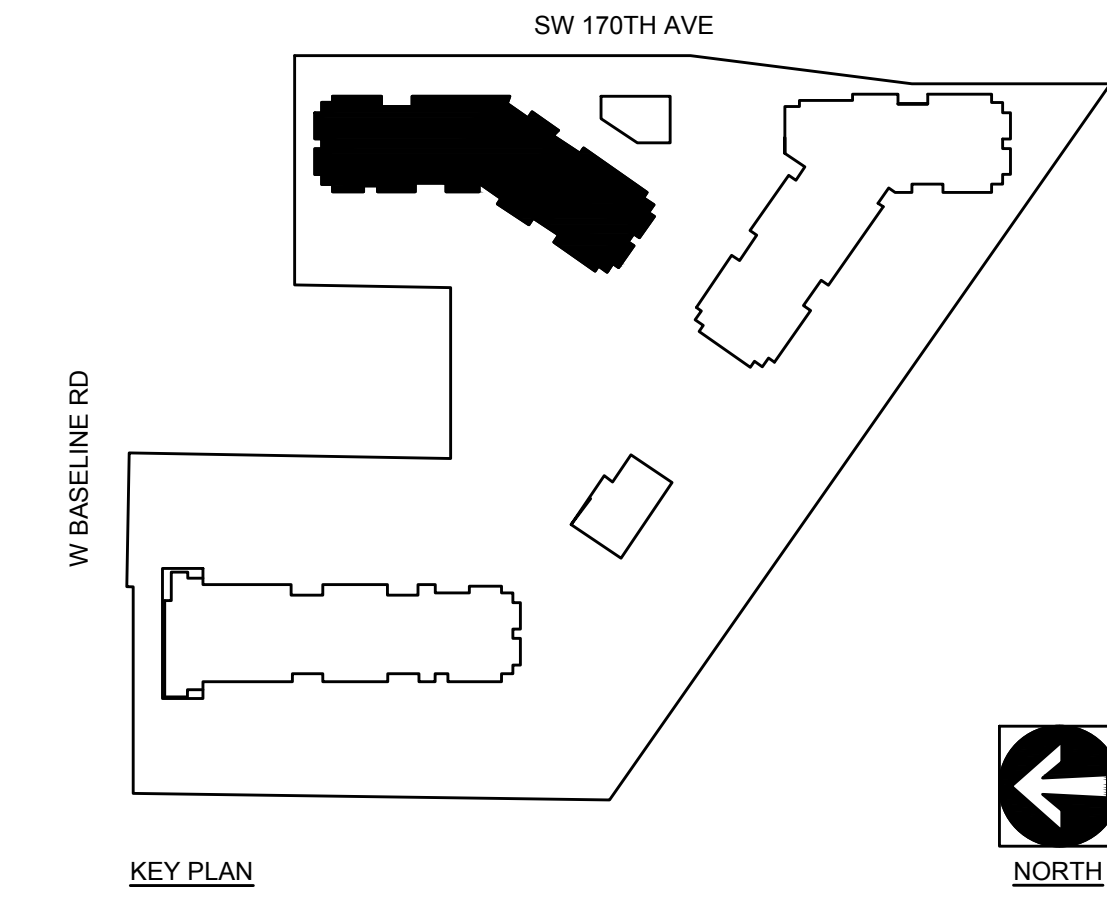
ROUTE VENTS FROM FLOOR DRAINS/SINKS BELOW SLAB AND UP ON/IN A WALL TO VENT STACKS ABOVE. (ROUTE INDIVIDUAL VENTS UNTIL ABOVE FLOOD LINE OF FIXTURE).

RISER DETAILS:

SEE SHEET **P4.00** FOR RISER DIAGRAMS
 X = RISER NUMBER

KEYED NOTES:

- ① - POINT OF CONNECTION. SEE CIVIL FOR CONTINUATION
- ② - SEE TYPICAL DOMESTIC SUPPLY RISER DIAGRAM 3/P6.00. PROVIDE ACCESS PANEL W/ UNIT SHUT-OFFS, TO BE LOCATED IN CLOSET OR BATHROOM CEILING. PROVIDE HWR SHUT OFF VALVE AT FIRST FLOOR UNITS.
- ③ - PROVIDE SHUT OFF VALVE W/ ACCESS LOCATED IN NEAREST UNIT. SEE ARCHITECTURAL FOR MOUNTING HEIGHT. COORDINATE WITH FACADE.
- ④ - SEE UNIT DISTRIBUTION DETAIL 4/P6.00. PROVIDE ACCESS PANEL AS REQ'D.
- ⑤ - HORIZONTAL WET VENT BATHROOM FIXTURES. SEE TYPICAL WASTE/VENT ROUTING EXAMPLE P1.03
- ⑥ - SEE PENINSULA SINK VENT DETAIL 7/P6.00.
- ⑦ - OFFSET WASTE/VENT/SUPPLY PIPING AS REQUIRED IN CEILING OR WALL JOIST SPACE OR BELOW SLAB. OFFSET VTR'S AS NEEDED.
- ⑧ - ROUTE VENT UP AND CONNECT TO 2" OR LARGER VENT RISER OR ROUTE TO ATTIC SPACE. COMBINE VENT RISERS BELOW ROOF AND VENT THROUGH ROOF.
- ⑨ - SEE GAS ISOMETRIC RISER DIAGRAM 8/P6.00.



09-28-22

MSI
 MECHANICAL SYSTEMS, INC.
 21185 NW EVERGREEN PARKWAY #201
 HILLSBORO, OR 97124
 PHONE: (503) 466-2222
 FAX: (503) 466-2211

THIS DRAWING WAS PREPARED EXCLUSIVELY FOR USE BY MSI MECHANICAL SYSTEMS, INC.

MFI Consulting Engineers
 3005 S.E. 44th St.
 Portland, OR 97214
 PHONE: (503) 251-6018
 FAX: (503) 251-6077
 INC. NUMBER: ME1-ENG-0018
 CONTACT: Mark Denner

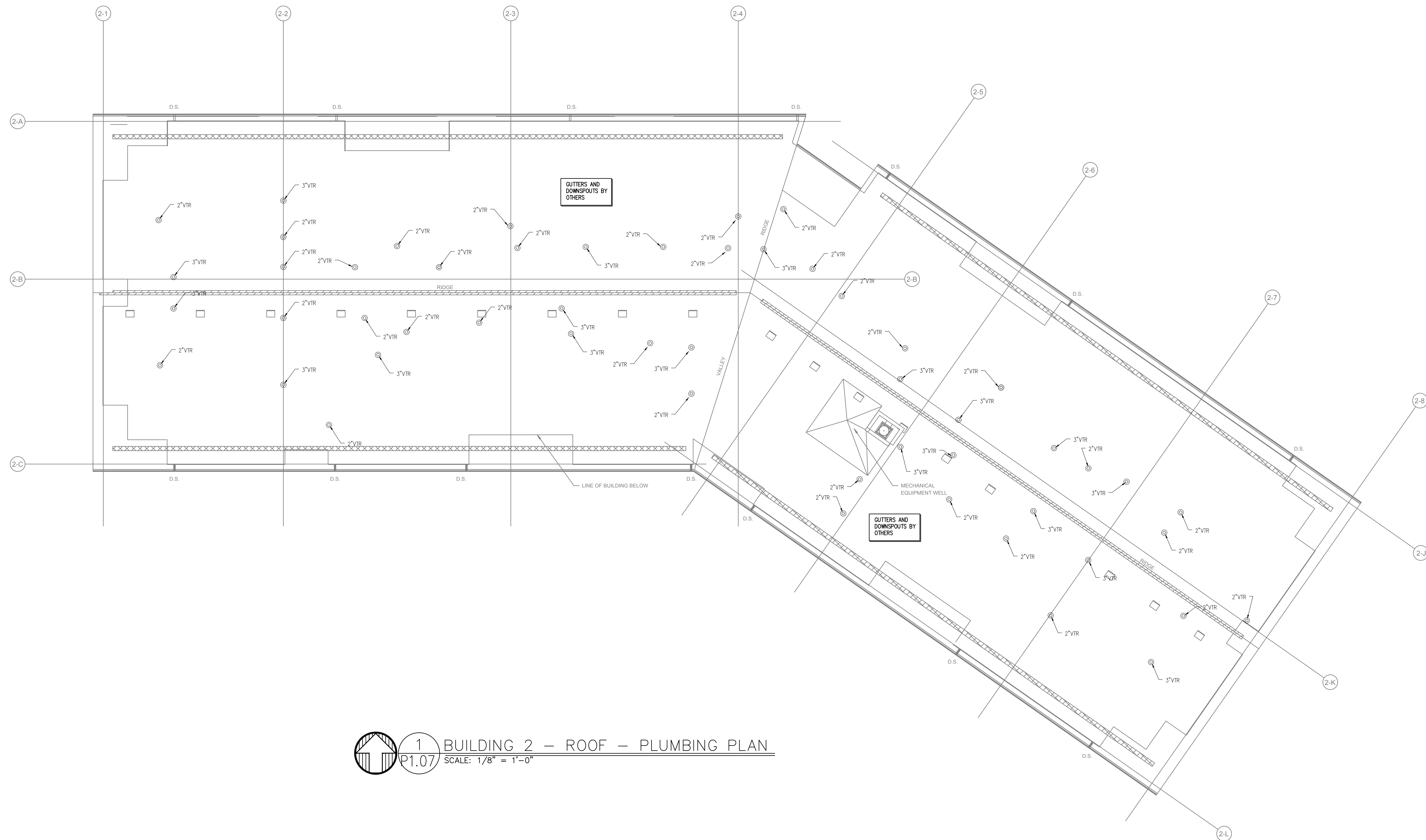
ELMONICA STATION APARTMENTS BUILDING 2
 SW 170TH AND W BASELINE
 REMBOLD PROPERTIES

REVISION	DATE	REASON FOR ISSUE

PLUMBING PLANS

PERMIT SET

DATE 09.23.2022	PROJECT NUMBER 215390
SHEET NUMBER P1.06-2	



1 BUILDING 2 – ROOF – PLUMBING PLAN
 P1.07 SCALE: 1/8" = 1'-0"

GENERAL NOTES:

DRAINAGE CONNECTIONS SHALL NOT BE MADE INTO A DRAINAGE PIPING SYSTEM WITHIN 8 FT OF ANY VERTICAL TO HORIZONTAL CHANGE OF DIRECTION OF A STACK CONTAINING A SUDS- PRODUCING FIXTURE.
 EXCEPTION: STACKS RECEIVING THE DISCHARGE FROM LESS THEN 3 STORIES OF PLUMBING FIXTURES

ROUTE ALL HVAC UNIT CONDENSATE DRAINS TO AN APPROVED LOCATION (OPTIONS LISTED BELOW)

- ROUTE ALL CONDENSATES DOWN IN WALLS IN COMMON DRAIN SYSTEM AND ROUTE TO OUTSIDE, TO MOP SINK OR CLOTHES WASHER BOX – CONTRACTOR TO SIZE DRAIN SYSTEM BASED ON NUMBER OF CONNECTED UNITS.
- PROVIDE CONDENSATE PUMPS ON ALL UNITS THAT ARE NOT GRAVITY DRAINED.

ROUTE VENTS FROM FLOOR DRAINS/SINKS BELOW SLAB AND UP ON/IN A WALL TO VENT STACKS ABOVE. (ROUTE INDIVIDUAL VENTS UNTIL ABOVE FLOOD LINE OF FIXTURE).

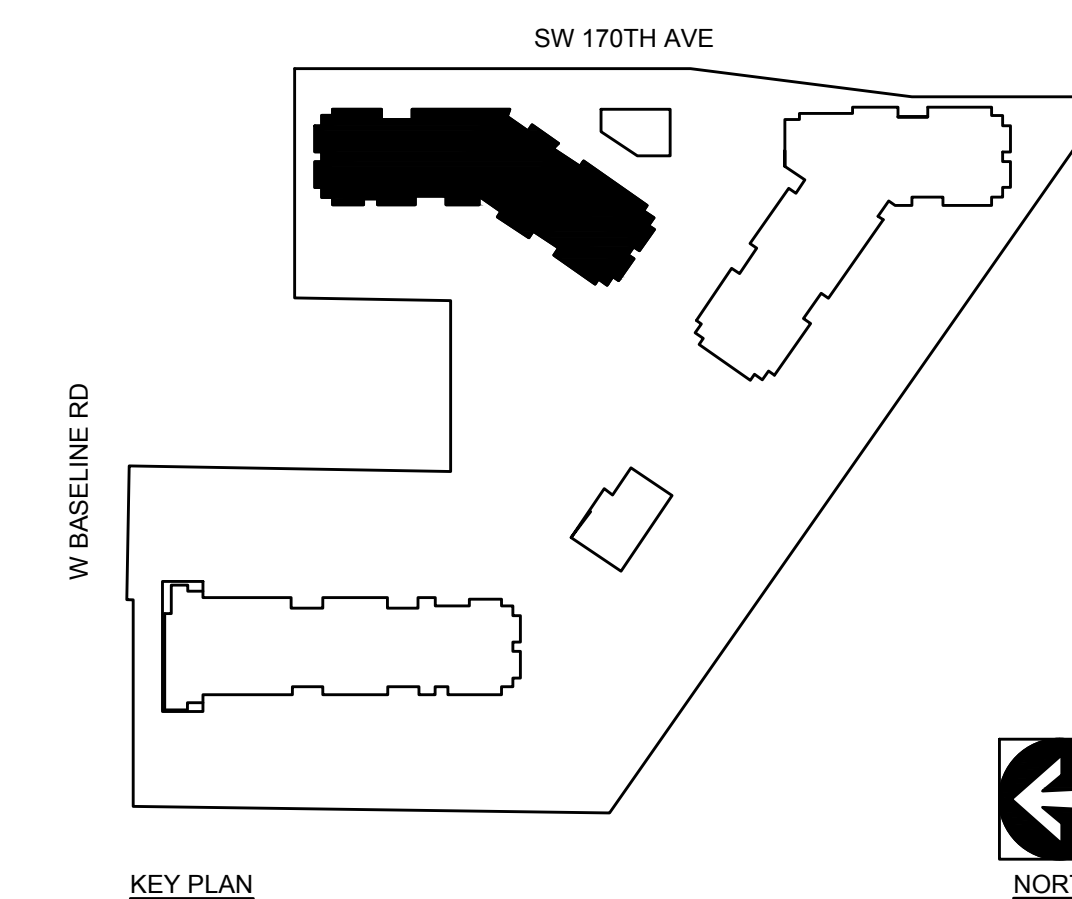
RISER DETAILS:

SEE SHEET **X** FOR RISER DIAGRAMS
P4.00

◇ = RISER NUMBER

KEYED NOTES:

- ① – POINT OF CONNECTION. SEE CIVIL FOR CONTINUATION
- ② – SEE TYPICAL DOMESTIC SUPPLY RISER DIAGRAM 3/P6.00. PROVIDE ACCESS PANEL W/ UNIT SHUT-OFFS, TO BE LOCATED IN CLOSET OR BATHROOM CEILING. PROVIDE HWR SHUT OFF VALVE AT FIRST FLOOR UNITS.
- ③ – PROVIDE SHUT OFF VALVE W/ ACCESS LOCATED IN NEAREST UNIT. SEE ARCHITECTURAL FOR MOUNTING HEIGHT. COORDINATE WITH FACADE.
- ④ – SEE UNIT DISTRIBUTION DETAIL 4/P6.00. PROVIDE ACCESS PANEL AS REQ'D.
- ⑤ – HORIZONTAL WET VENT BATHROOM FIXTURES. SEE TYPICAL WASTE/VENT ROUTING EXAMPLE P1.03
- ⑥ – SEE PENINSULA SINK VENT DETAIL 7/P6.00.
- ⑦ – OFFSET WASTE/VENT/SUPPLY PIPING AS REQUIRED IN CEILING OR WALL JOIST SPACE OR BELOW SLAB. OFFSET VTR'S AS NEEDED.
- ⑧ – ROUTE VENT UP AND CONNECT TO 2" OR LARGER VENT RISER OR ROUTE TO ATTIC SPACE. COMBINE VENT RISERS BELOW ROOF AND VENT THROUGH ROOF.
- ⑨ – SEE GAS ISOMETRIC RISER DIAGRAM 8/P6.00.



09-28-22

MSI
 MECHANICAL SYSTEMS, INC.
 21165 NW EVERGREEN PARKWAY #201
 HILLSBORO, OR 97124
 PHONE: (503) 466-2222
 FAX: (503) 466-2211
 THIS DRAWING WAS PREPARED EXCLUSIVELY FOR USE BY MSI MECHANICAL SYSTEMS, INC.

 Consulting Engineers
 3005 S.E. 44th St.
 Portland, OR 97214
 PH: (503) 231-0018
 FAX: (503) 231-0077
 INC. NUMBER: ENG. 0018
 CONTACT: Mark Denver

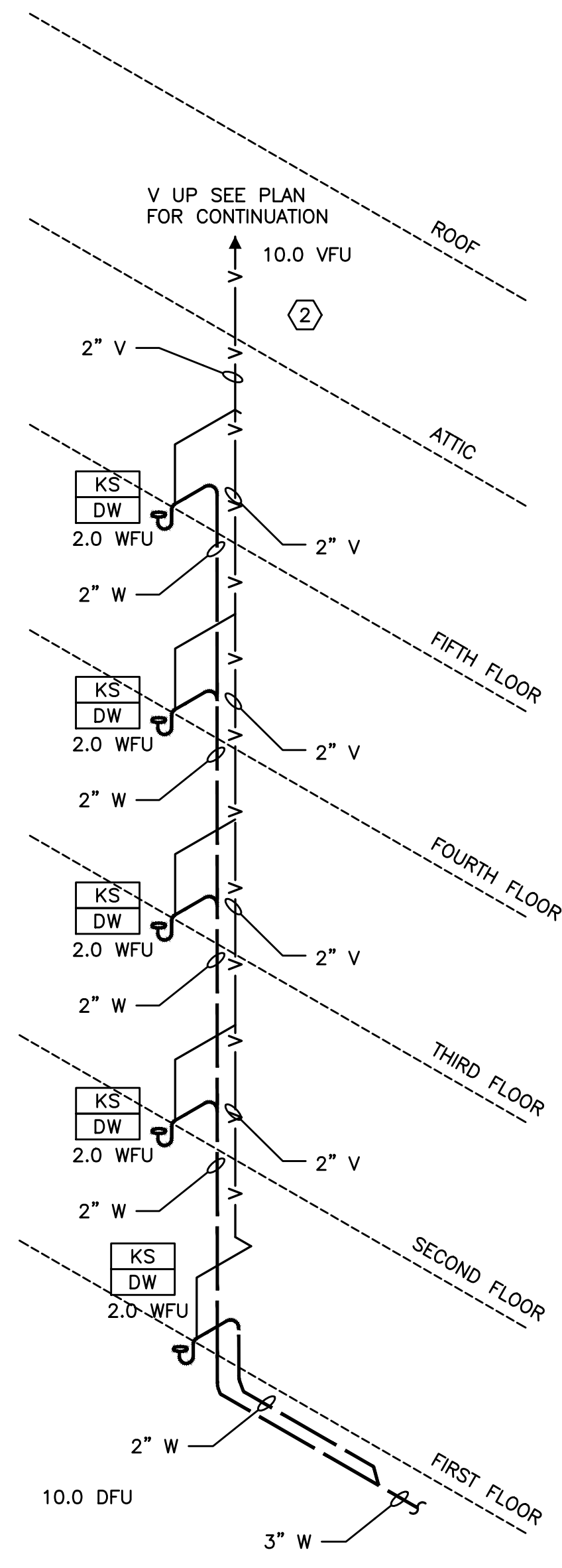
ELMONICA STATION APARTMENTS BUILDING 2
 SW 170TH AND W BASELINE
 REMBOLD PROPERTIES

REVISION	DATE	REASON FOR ISSUE

PLUMBING PLANS

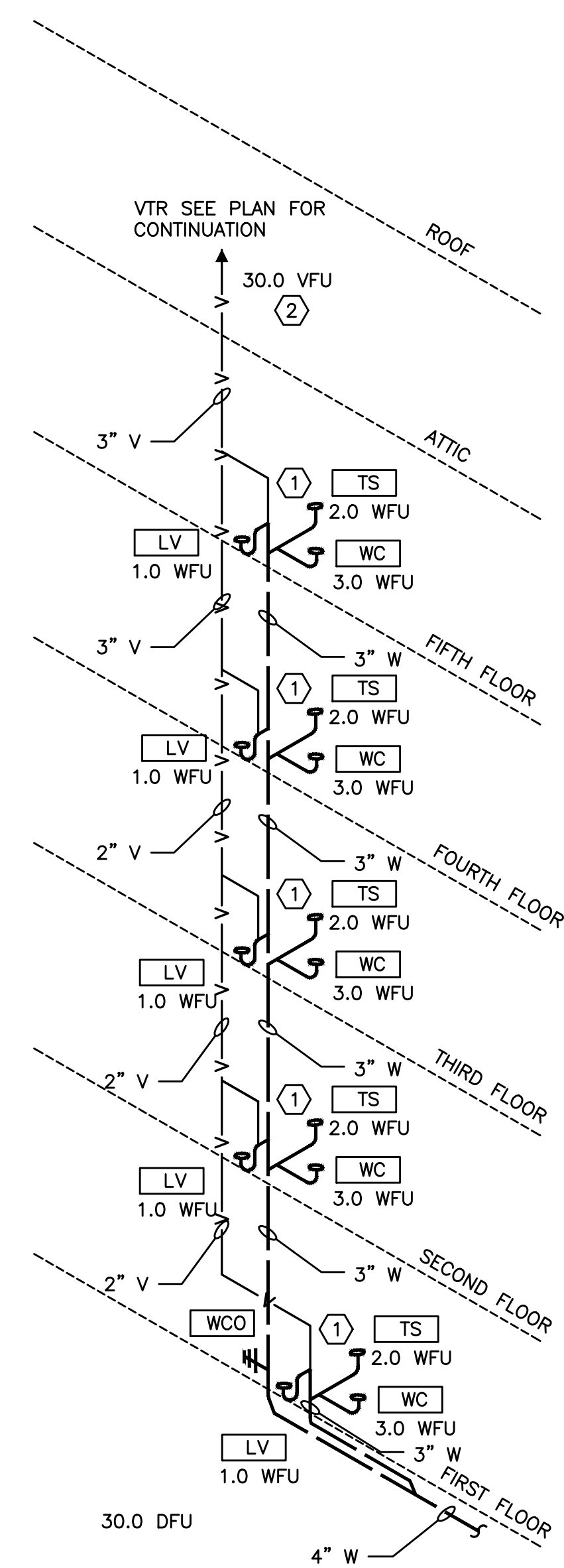
PERMIT SET

DATE 09.23.2022	PROJECT NUMBER 215390
SHEET NUMBER P1.07-2	



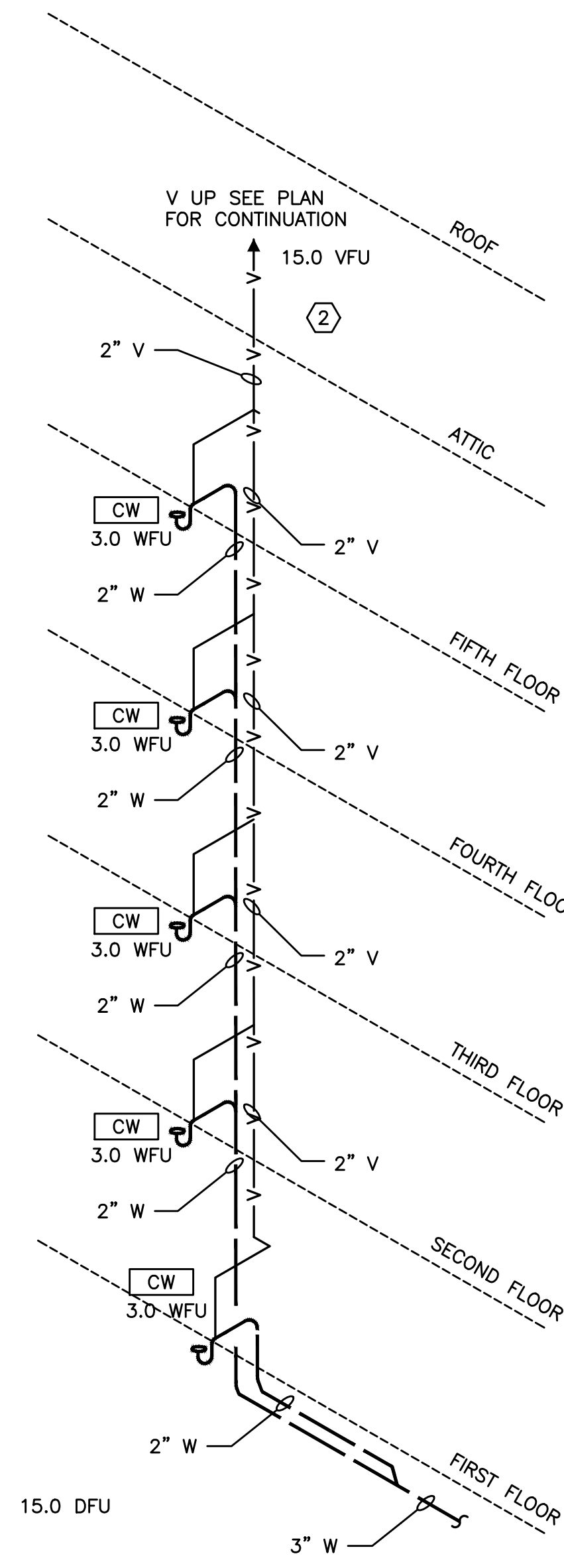
NOTE: DRAINAGE CONNECTIONS SHALL NOT BE MADE INTO A DRAINAGE PIPING SYSTEM WITHIN 8 FT OF ANY VERTICAL TO HORIZONTAL CHANGE OF DIRECTION OF A STACK CONTAINING A SUDS-PRODUCING FIXTURE.
EXCEPTION: STACKS RECEIVING THE DISCHARGE FROM LESS THAN 3 STORES OF PLUMBING FIXTURES.

1 RISER "1" TYPICAL
NO SCALE
P4.00
KS/DW = 2.0 DFU



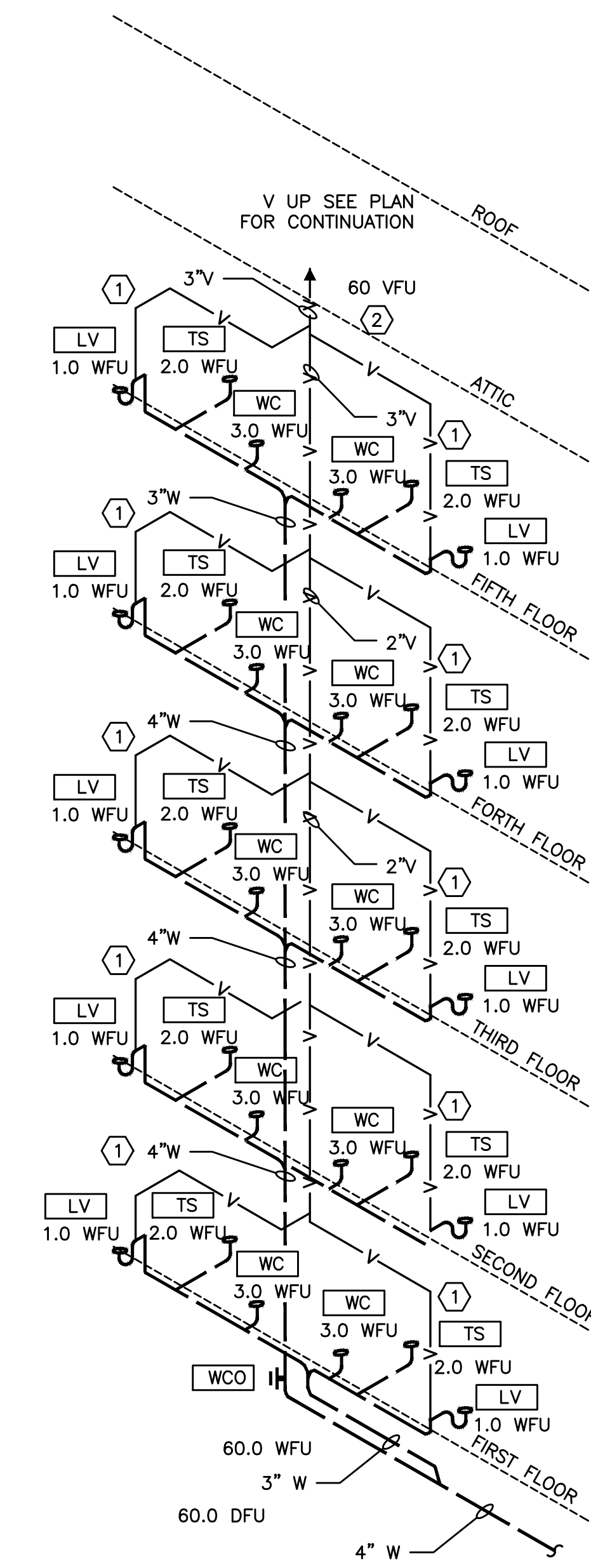
NOTE: DRAINAGE CONNECTIONS SHALL NOT BE MADE INTO A DRAINAGE PIPING SYSTEM WITHIN 8 FT OF ANY VERTICAL TO HORIZONTAL CHANGE OF DIRECTION OF A STACK CONTAINING A SUDS-PRODUCING FIXTURE.
EXCEPTION: STACKS RECEIVING THE DISCHARGE FROM LESS THAN 3 STORES OF PLUMBING FIXTURES.

2 RISER "2" TYPICAL
NO SCALE
P4.00
WC/LV/SH = 6.0DFU



NOTE: DRAINAGE CONNECTIONS SHALL NOT BE MADE INTO A DRAINAGE PIPING SYSTEM WITHIN 8 FT OF ANY VERTICAL TO HORIZONTAL CHANGE OF DIRECTION OF A STACK CONTAINING A SUDS-PRODUCING FIXTURE.
EXCEPTION: STACKS RECEIVING THE DISCHARGE FROM LESS THAN 3 STORES OF PLUMBING FIXTURES.

3 RISER "3" TYPICAL
NO SCALE
P4.00
CW = 3.0DFU

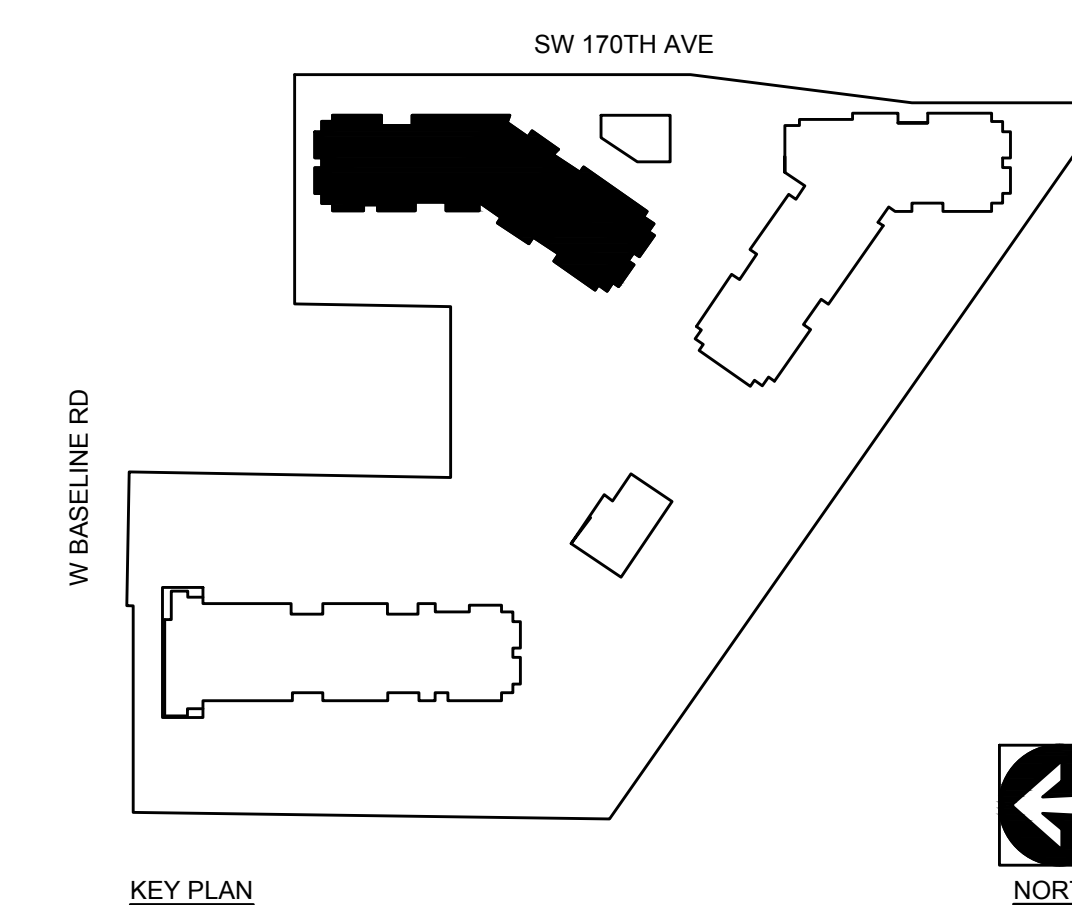


NOTE: DRAINAGE CONNECTIONS SHALL NOT BE MADE INTO A DRAINAGE PIPING SYSTEM WITHIN 8 FT OF ANY VERTICAL TO HORIZONTAL CHANGE OF DIRECTION OF A STACK CONTAINING A SUDS-PRODUCING FIXTURE.
EXCEPTION: STACKS RECEIVING THE DISCHARGE FROM LESS THAN 3 STORES OF PLUMBING FIXTURES.

4 RISER "4" TYPICAL
NO SCALE
P4.00

KEYED NOTES:

- ① - HORIZONTAL WET VENT BATHROOM FIXTURES. SEE TYPICAL WASTE/VENT ROUTING EXAMPLE P1.03
- ② - ROUTE TO ATTIC SPACE AND VENT THROUGH ROOF.



MSI
MECHANICAL SYSTEMS, INC.
21145 NW EVERGREEN PARKWAY #201
HILLSBORO, OR 97124
PHONE: (503) 466-2222
FAX: (503) 466-2211
THIS DRAWING WAS PREPARED EXCLUSIVELY FOR USE BY MSI MECHANICAL SYSTEMS, INC.

MFI Consulting Engineers
3005 S.E. 44th St.
Portland, OR 97214
PHONE: (503) 234-6048
FAX: (503) 234-6077
INC. 3005 S.E. 44th St. #100
CONTACT: Mark Denner

ELMONICA STATION APARTMENTS BUILDING 2
SW 170TH AND W BASELINE
REMBOLD PROPERTIES

REVISION	DATE	REASON FOR ISSUE

PLUMBING
RISER
DIAGRAMS
PERMIT
SET

DATE: 09.23.2022 PROJECT NUMBER: 215390
SHEET NUMBER: P4.00-2

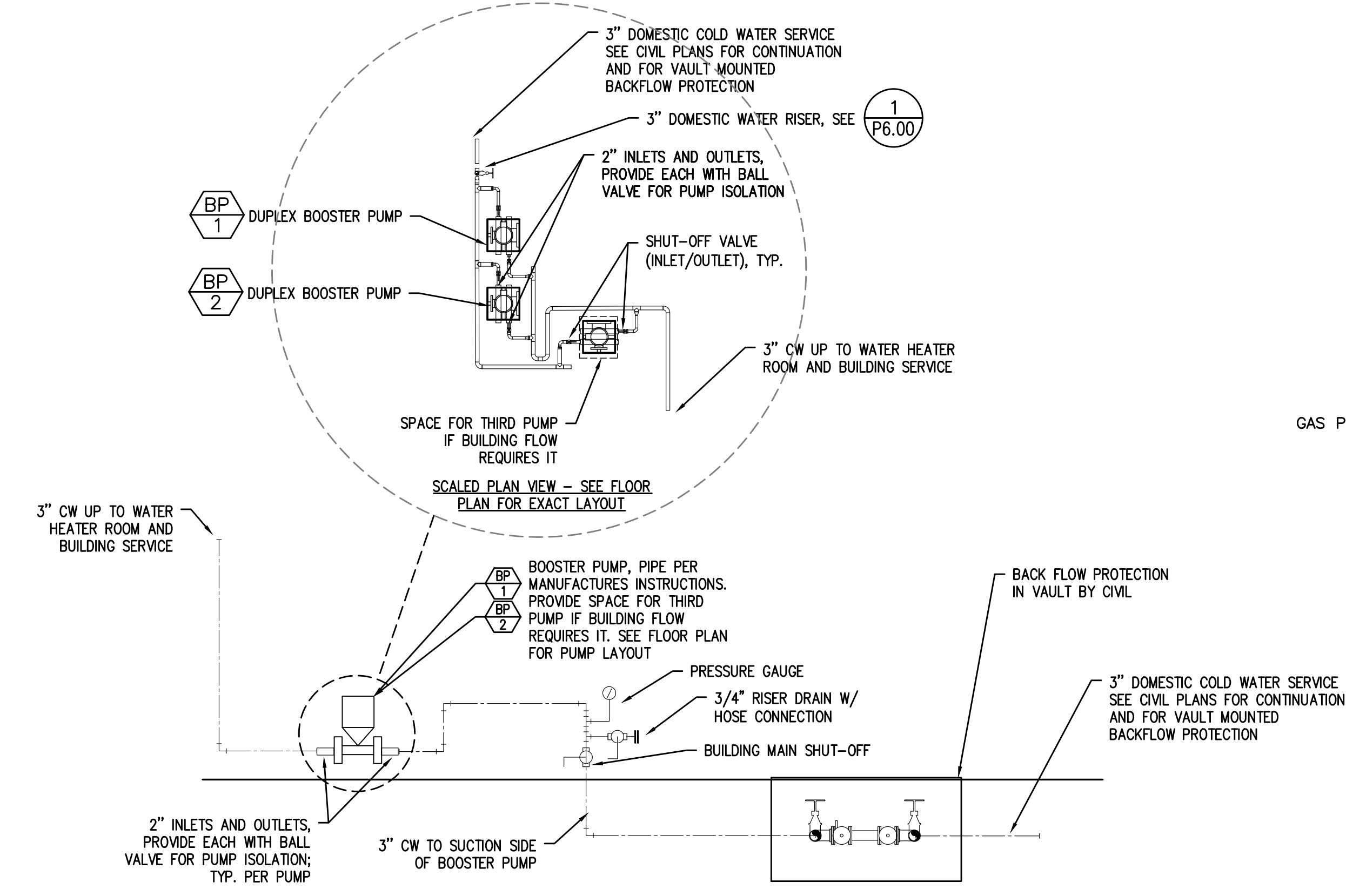
REVISION	DATE	REASON FOR ISSUE

PLUMBING DETAILS

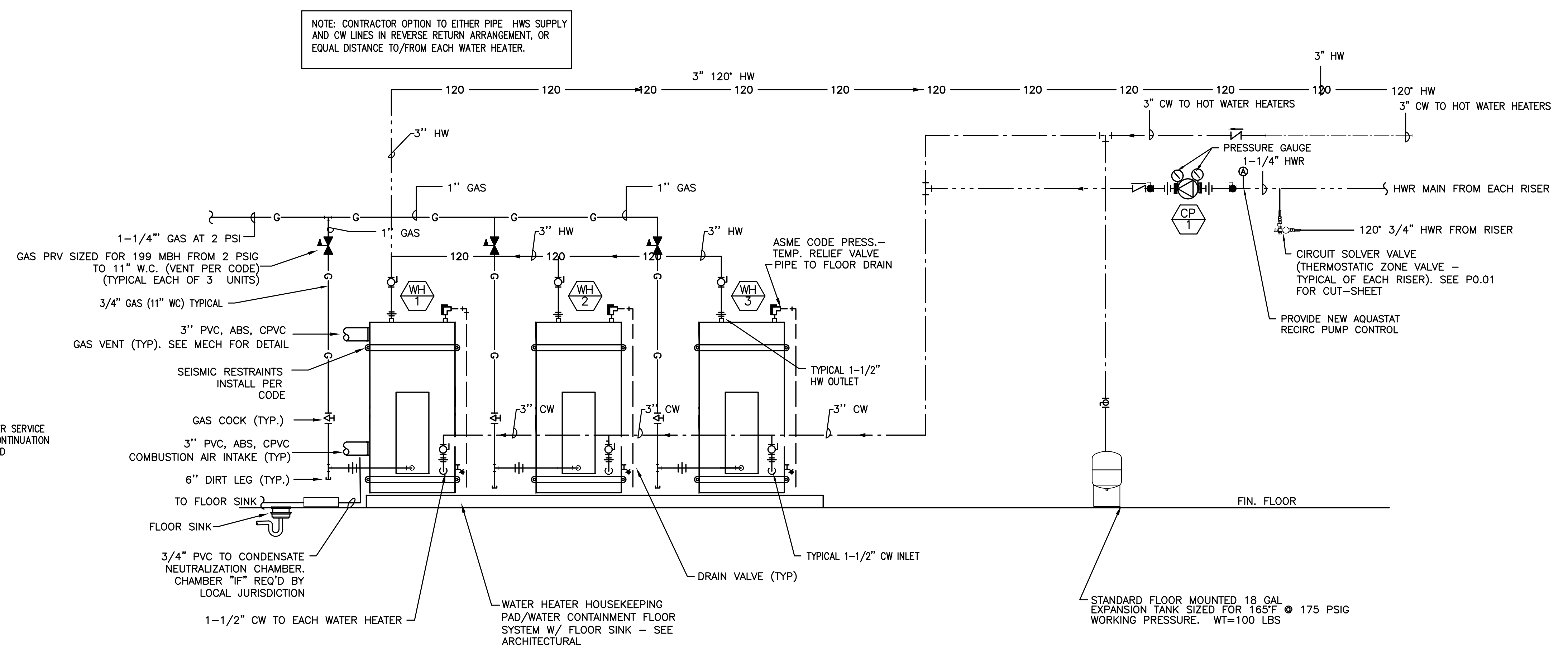
PERMIT SET

DATE: 09.23.2022 PROJECT NUMBER: 215390

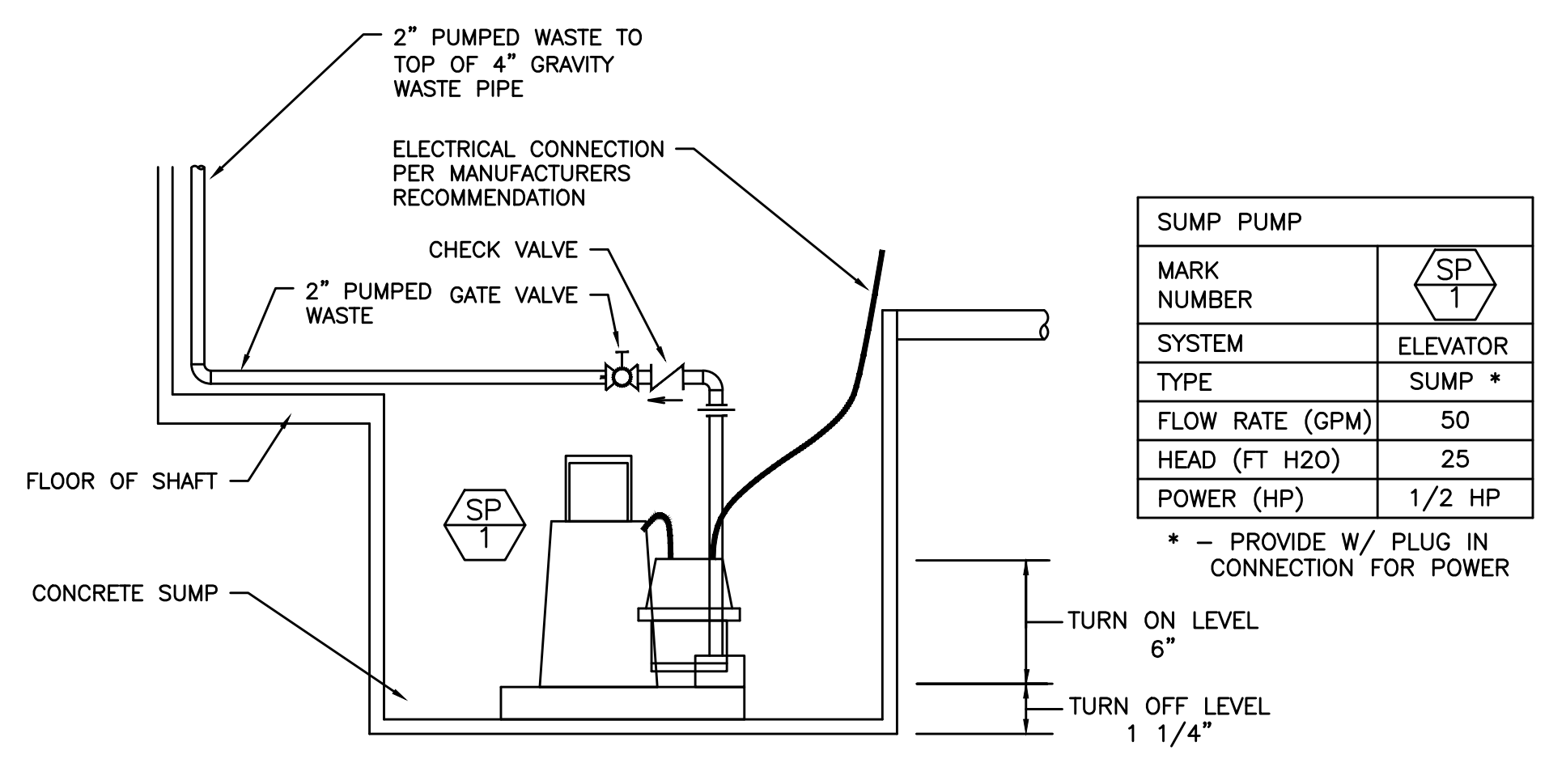
SHEET NUMBER: P6.00-2



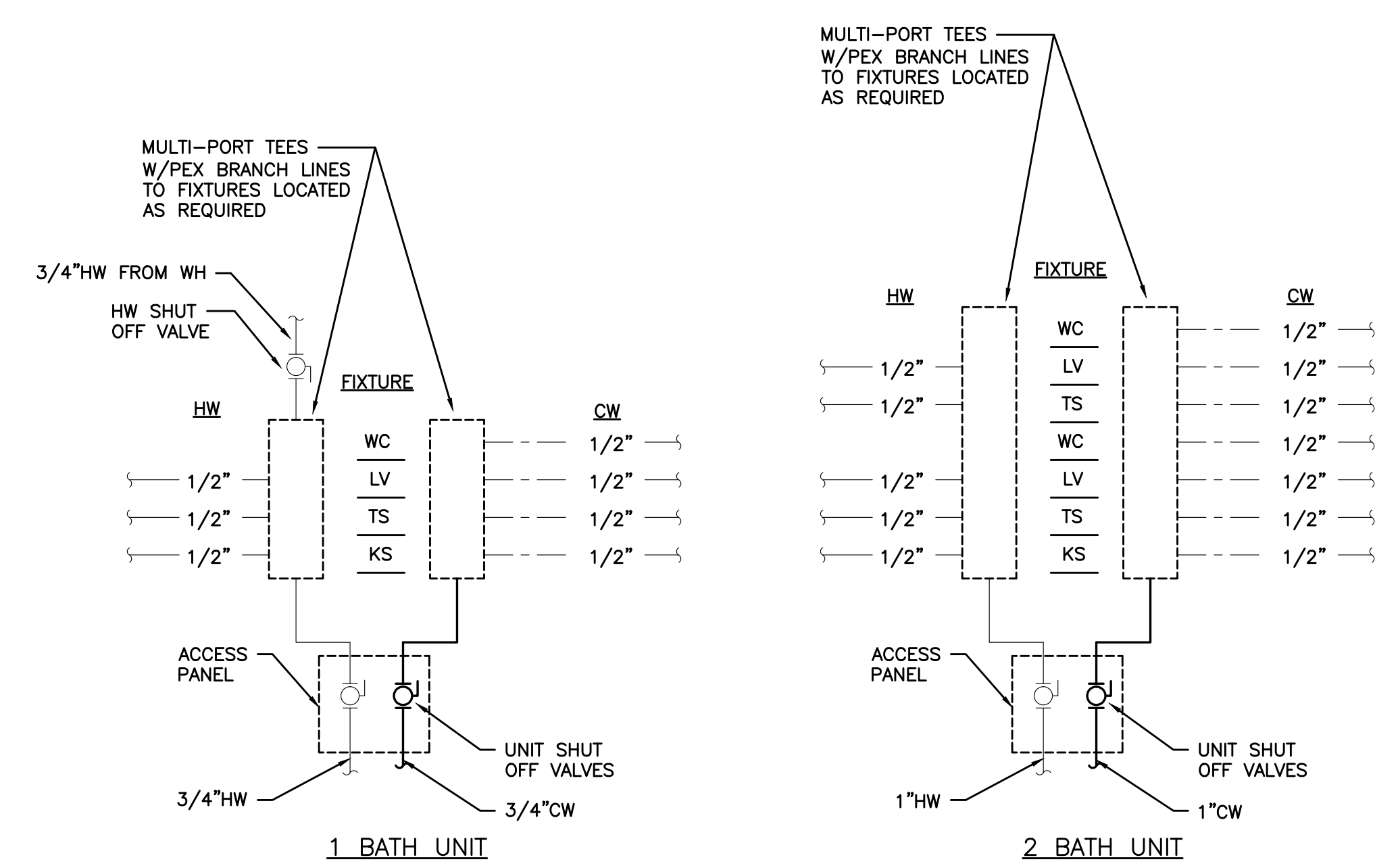
1 DOMESTIC RISER
 SCALE: DETAIL



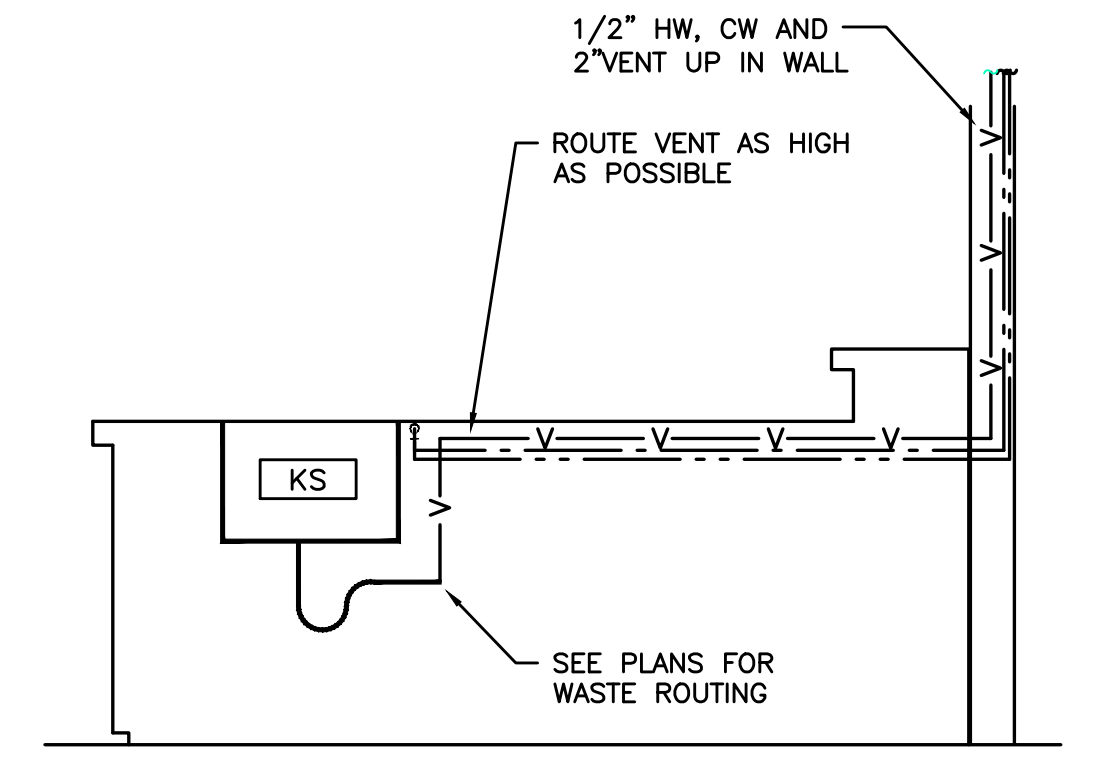
4 WATER HEATER
 SCALE: DIAGRAMATIC



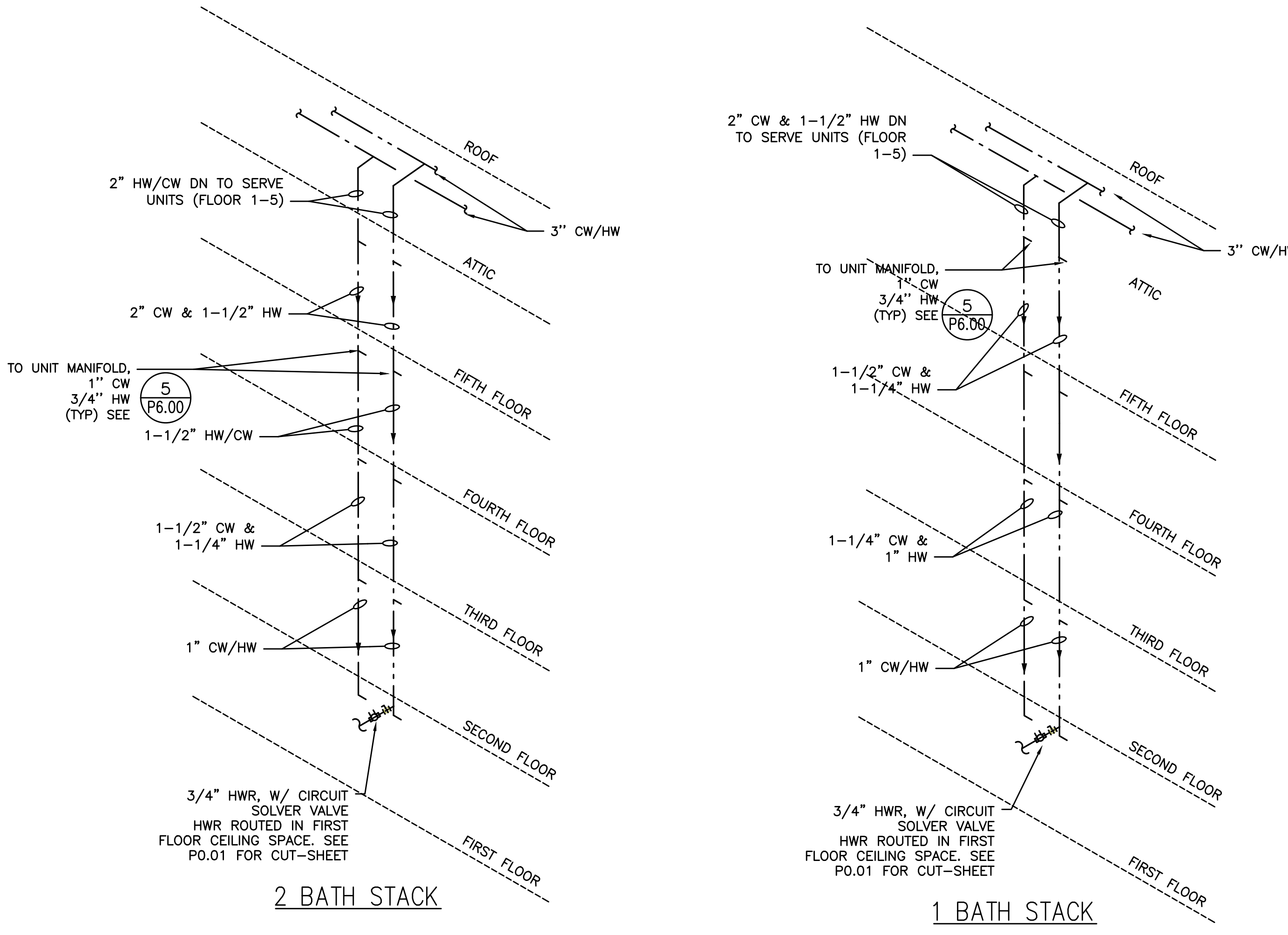
2 ELEVATOR SUMP PUMP
 SCALE: DIAGRAMATIC



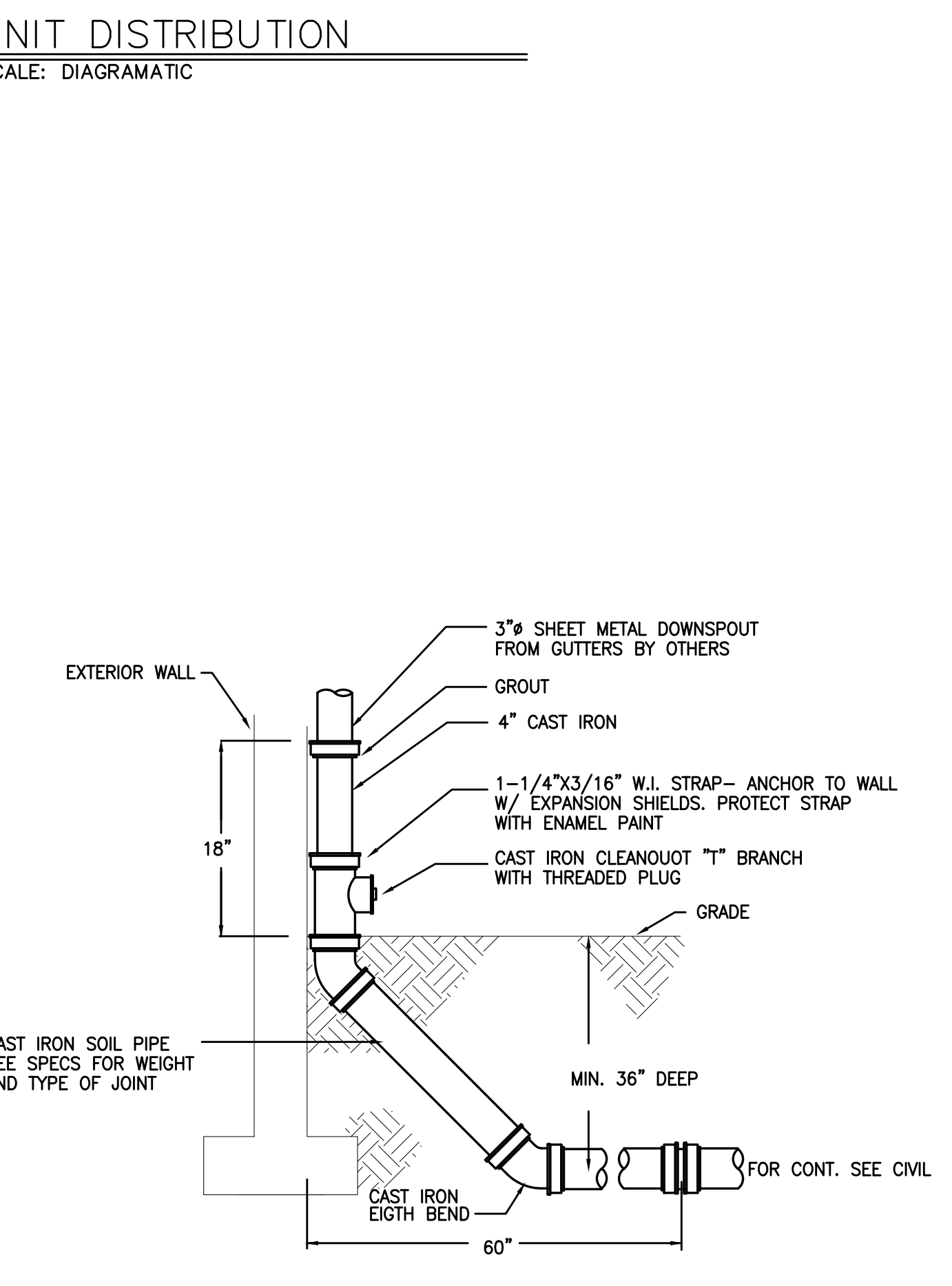
5 UNIT DISTRIBUTION
 SCALE: DIAGRAMATIC



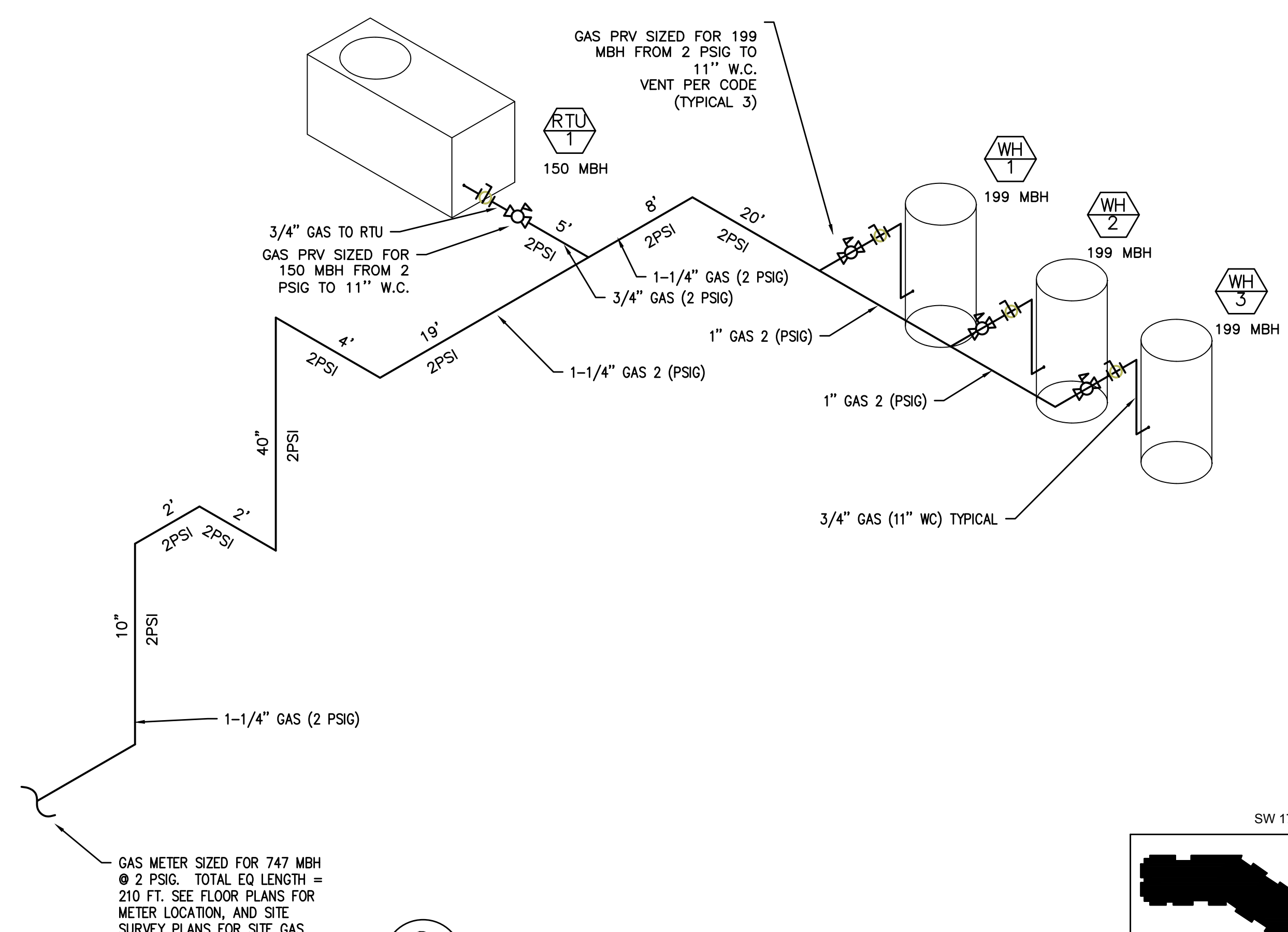
6 PENINSULA VENT DETAIL
 SCALE: DIAGRAMATIC



3 TYPICAL DOMESTIC WATER RISER
 SCALE: DETAIL



7 DOWNSPOUT DETAIL
 SCALE: DETAIL



8 ISOMETRIC GAS DIAGRAM
 SCALE: DETAIL

