

**PLUMBING LEGEND**

AFF	-----	ABOVE FINISHED FLOOR	-----	(CW) COLD WATER
ARCH	-----	ARCHITECTURAL	-----	(HW) HOT WATER
B.G.	-----	BELOW GRADE	-----	(TW) TEMPERED HOT WATER (105°)
BTU	-----	BRITISH THERMAL UNIT	-----	(W) BELOW GRADE WASTE
CAP.	-----	CAPACITY	-----	(W) ABOVE GRADE WASTE
C.I.	-----	CAST IRON	-----	(V) VENT
FD	-----	FLOOR DRAIN	-----	RD (RD) RAIN DRAIN
FDC	-----	FIRE DEPARTMENT CONNECTION	-----	FDC (FDC) FIRE DEPARTMENT CONNECTION
F.F.	-----	FINISH FLOOR	-----	(A) COMPRESSED AIR
FT	-----	FOOT / FEET	-----	(P) PROPANE
GPM	-----	GALLONS PER MINUTE	-----	(F) FIRE WATER
G.V.	-----	GATE VALVE	-----	
HP	-----	HORSEPOWER	-----	
HR.	-----	INVERT ELEVATION	-----	
LAV.	-----	LAVATORY	-----	
MAX.	-----	MAXIMUM	-----	
MBH	-----	THOUSANDS OF BTUs PER HOUR	-----	
MIN	-----	MINIMUM	-----	
OS&Y	-----	OUTSIDE STEM & YOKE	-----	
PRV	-----	PRESSURE REDUCING VALVE	-----	
PSI, PSIG	-----	POUNDS PER SQUARE INCH	-----	
P/T	-----	PRESSURE / TEMPERATURE	-----	
REQ'D	-----	REQUIRED	-----	
RFBP	-----	REDUCED PRESSURE BACKFLOW PREVENTER	-----	
RPM	-----	REVOLUTIONS PER MINUTE	-----	
TYP	-----	TYPICAL	-----	
UR	-----	URINAL	-----	
VTR	-----	VENT THROUGH ROOF	-----	
WC	-----	WATER CLOSET	-----	

	-----	PRESSURE/TEMP RELIEF VALVE
	-----	BUTTERFLY VALVE
	-----	GAS PRESSURE REGULATING VALVE
	-----	TOP CONNECTION
	-----	BOTTOM CONNECTION
	-----	GATE VALVE
	-----	BALL VALVE
	-----	BALANCING VALVE
	-----	CHECK VALVE
	-----	UNION
	-----	DOUBLE CHECK ASSEMBLY
	-----	POINT OF USE MIXING VALVE

	-----	EQUIPMENT MARK NUMBER
	-----	FIXTURE MARK
	-----	EXISTING
	-----	NOTE
	-----	CONNECT TO EXISTING
	-----	CAP
	-----	TEE
	-----	ELBOW
	-----	CLEANOUT

FIXTURE TYPE	DOMESTIC WATER SERVICE				SANITARY WASTE SERVICE		
	NUMBER OF FIXTURES	WATER FIXTURE UNITS	TOTAL WSFU	TOTAL CW FIXTURE UNITS	TOTAL HW FIXTURE UNITS	TOTAL DRAINAGE FIXTURE UNITS	TOTAL DFU
DRINKING FOUNTAIN / WATER COOLER (GENERAL USE)	1	0.5	0.5	0.5	0	0.5	0.5
LAVATORY (SINGLE)	2	1	2	1.5	1.5	1	2
RECEPTOR (INDIRECT WASTE)	1	---	---	---	---	1	1
SINK GENERAL (1-1/2" TRAP)	1	1.5	1.5	1.125	1.125	3	3
WATER CLOSET (1.6 GPF FLUSHOMETER VALVE)	2	5	10	10	0	6	12
HOSE BIBB (FIRST ONE)	1	2.5	2.5	2.5	0	---	---
HOSE BIBB (EACH ADDITIONAL)	0	0	0	0	0	---	---
	0	0	0	0	0	0	0
	0	0	0	0	0	0	0
<b>TOTAL</b>	<b>8</b>	<b>16.5</b>	<b>16.5</b>	<b>15.625</b>	<b>2.625</b>	<b>18.5</b>	<b>18.5</b>

<b>GPM</b>	<b>WASTE SIZE</b>
Building Supply Size	1.5"
Pool Supply Size	1.5" 1.5" 3/4"
Meter Size	Per Oregon W-4

**PLUMBING CONNECTION SCHEDULE**

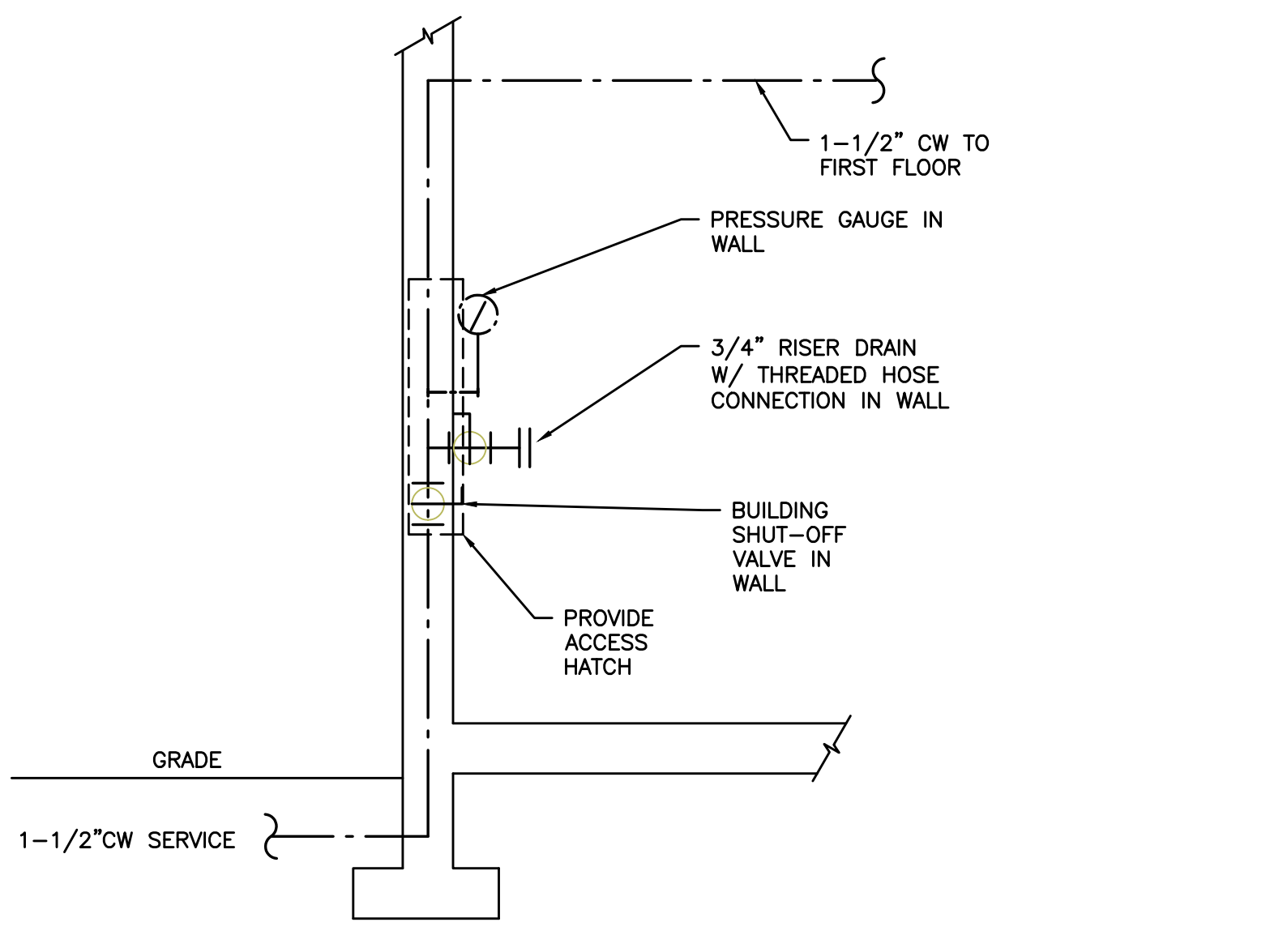
MARK	FIXTURE	W	V	CW	HW	REMARKS
WC-1	WATER CLOSET	3"	2"	3/4"	---	FLOOR MOUNT, FLUSH TANK ADA
LV-1	LAVATORY	1-1/2"	1-1/2"	1/2"	1/2"	WALL HUNG, ADA (1)
S-1	SINK	1-1/2"	1-1/2"	1/2"	1/2"	
HB-1	HOSE BIB	---	---	3/4"	---	(2)
FD-1	FLOOR DRAIN	3"	VL	---	---	(3)
RD-1	ROOF DRAIN	---	---	---	---	SIZED ON DRAWINGS
OD-1	OVERFLOW ROOF DRAIN	---	---	---	---	SIZED ON DRAWINGS
ON-1	OVERFLOW NOZZLE	---	---	---	---	SIZED ON DRAWINGS

V.L. - VENTED LINE

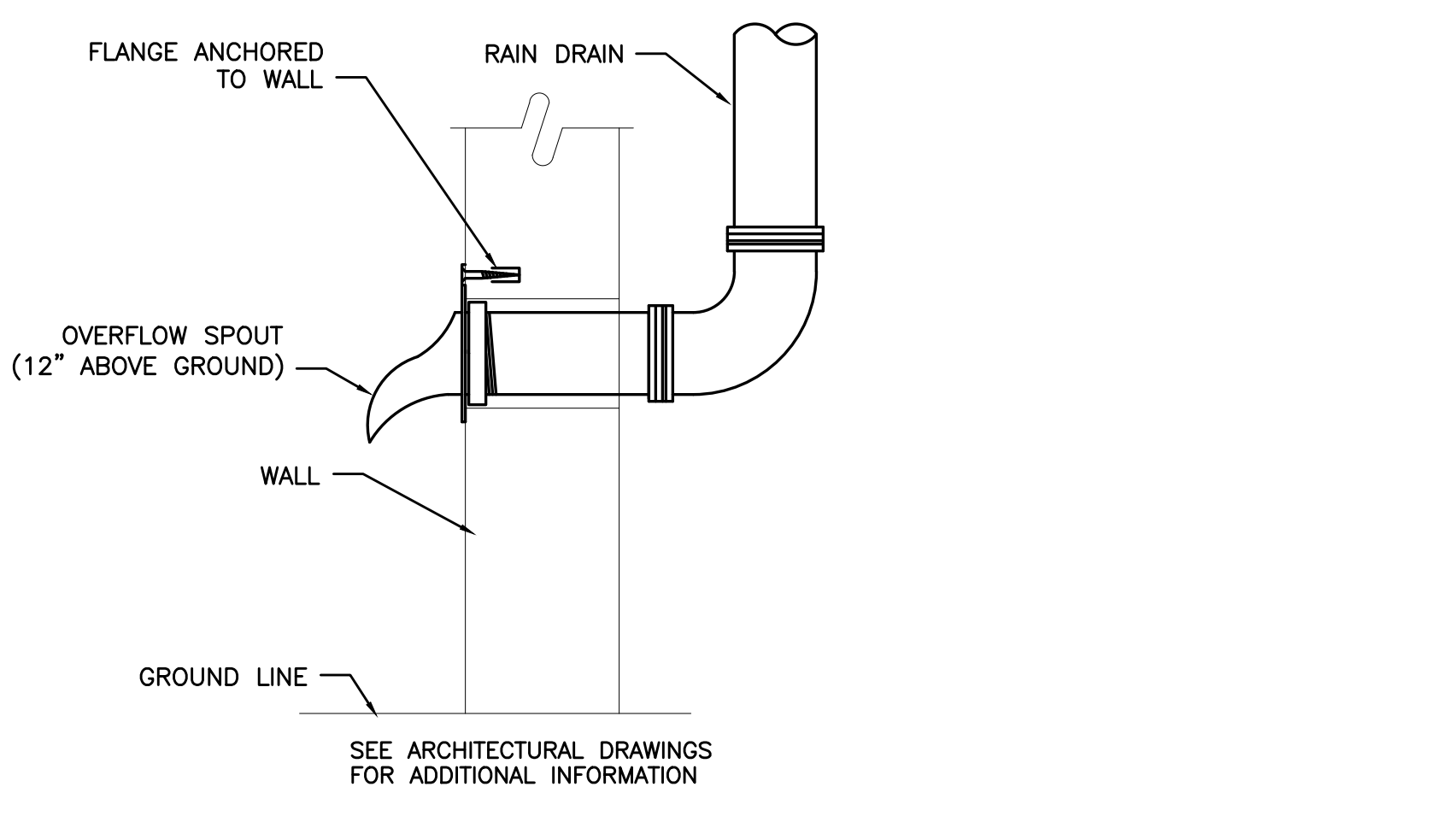
(1) PROVIDE WITH ASSE 1070 APPROVED POINT OF USE MIXING VALVE OR LAV FAUCET WITH APPROVED TEMPERATURE LIMIT STOP AT ALL PUBLIC LAVS.

(2) PROVIDE ACCESSIBLE VALVE BOX (SINGLE THROW DUAL BALL VALVE) WITH STAND PIPE FITTING LOCATED TO THE SIDE OF THE WASHER.

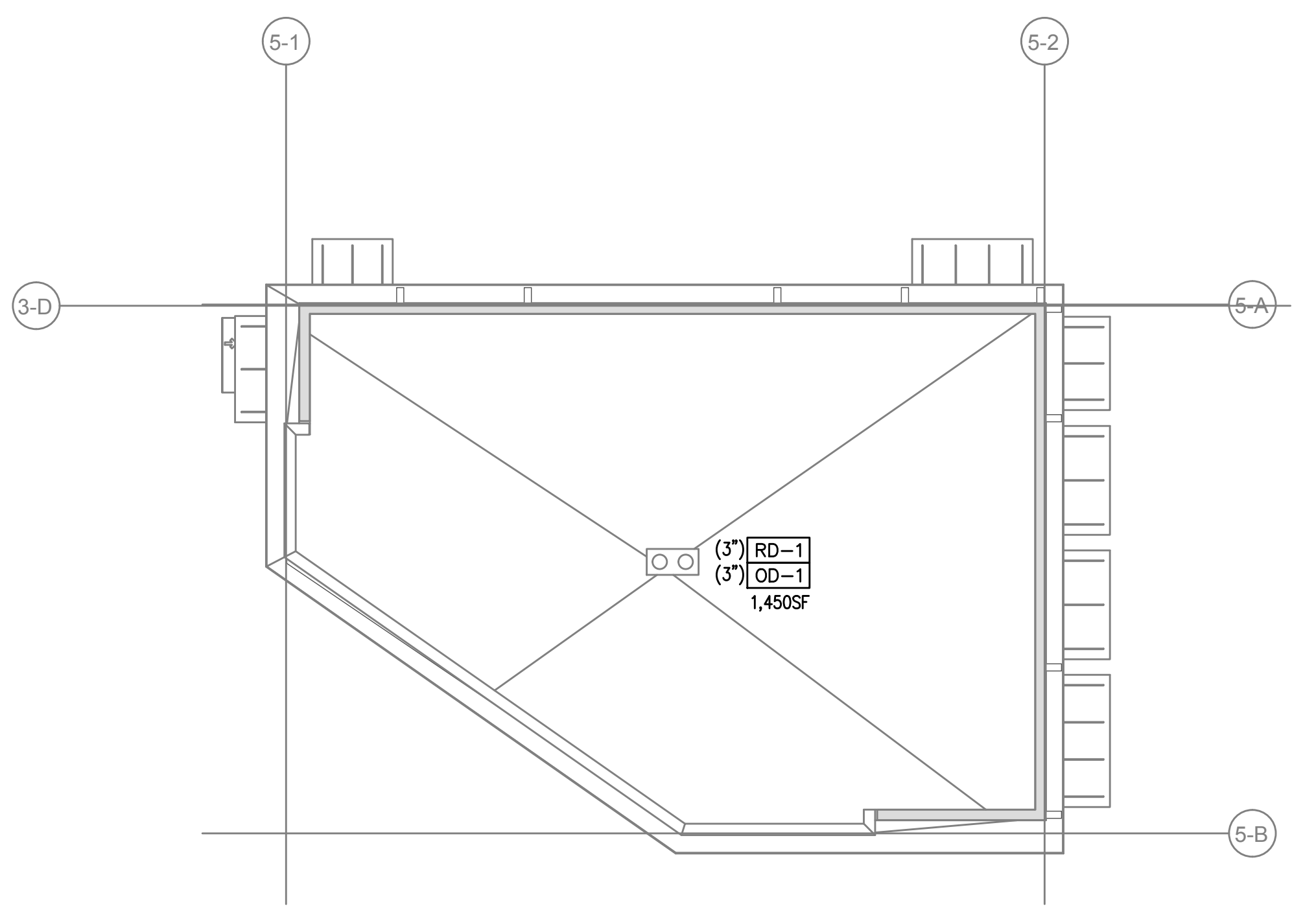
(3) PROVIDE TRAP PRIMER AND LINE SIZE CLEAN OUT.



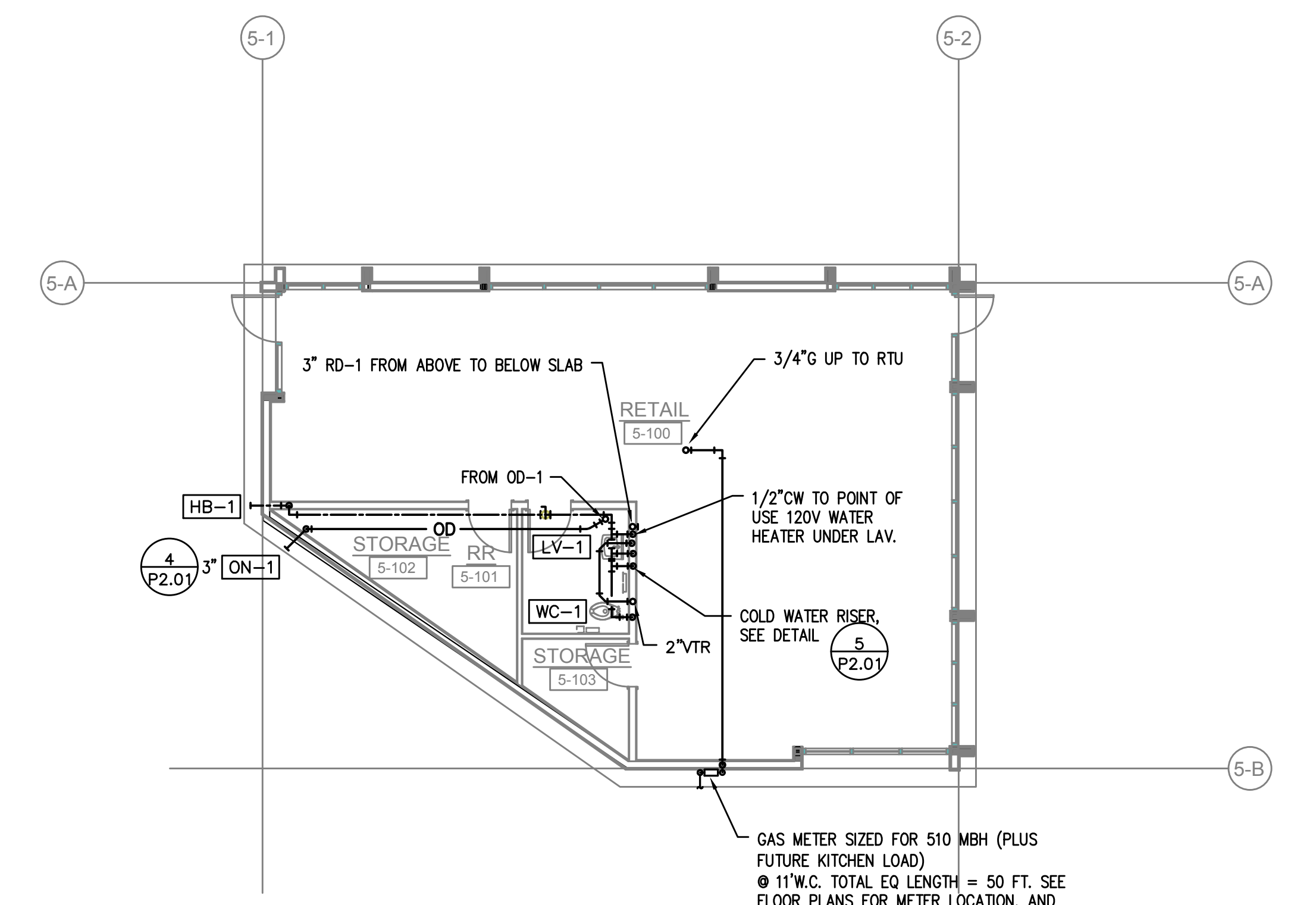
**5 COLD WATER RISER**  
P2.01 SCALE: DIAGRAMATIC



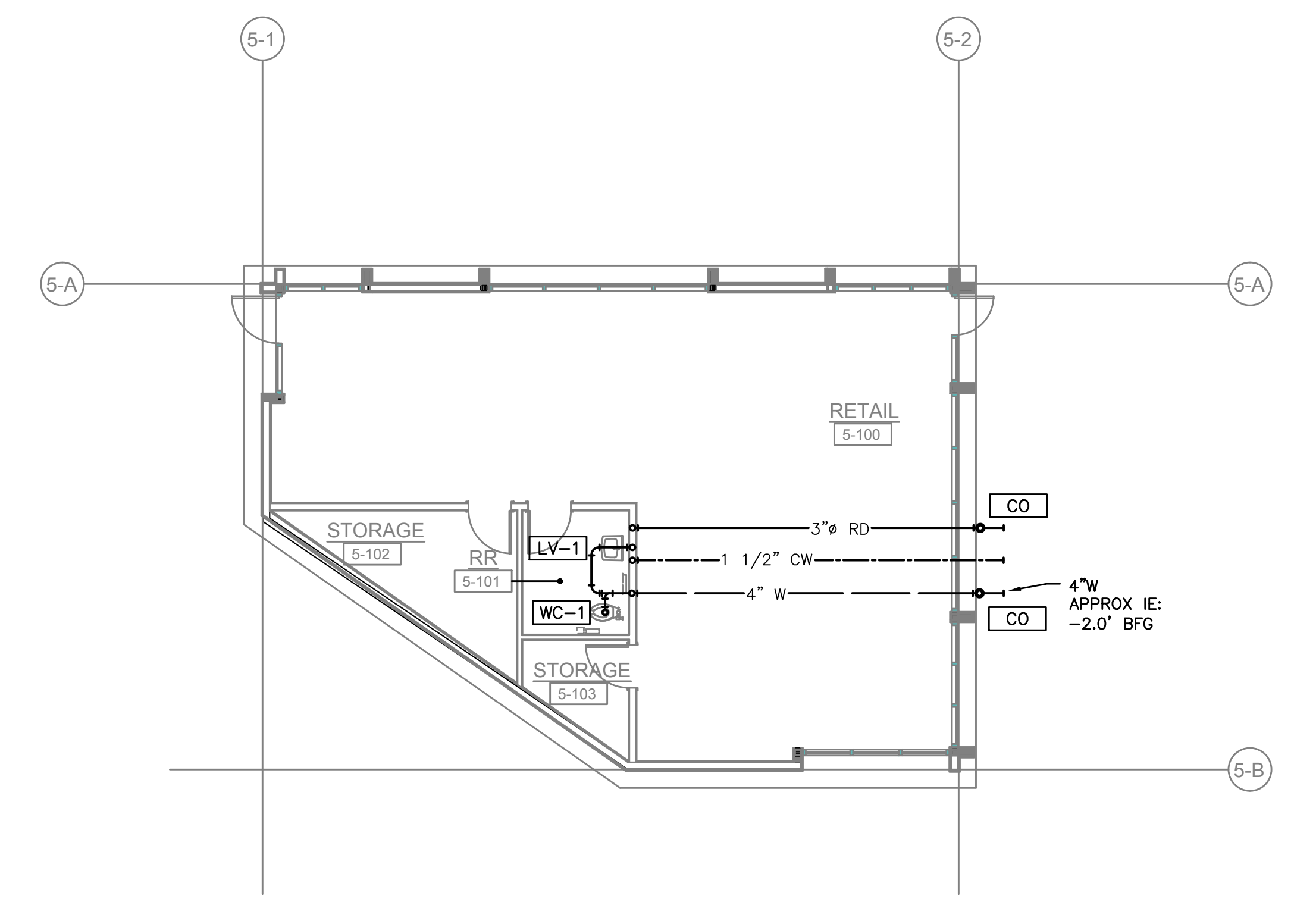
**4 OVERFLOW MOUNTING DETAIL**  
P2.01 NOT TO SCALE



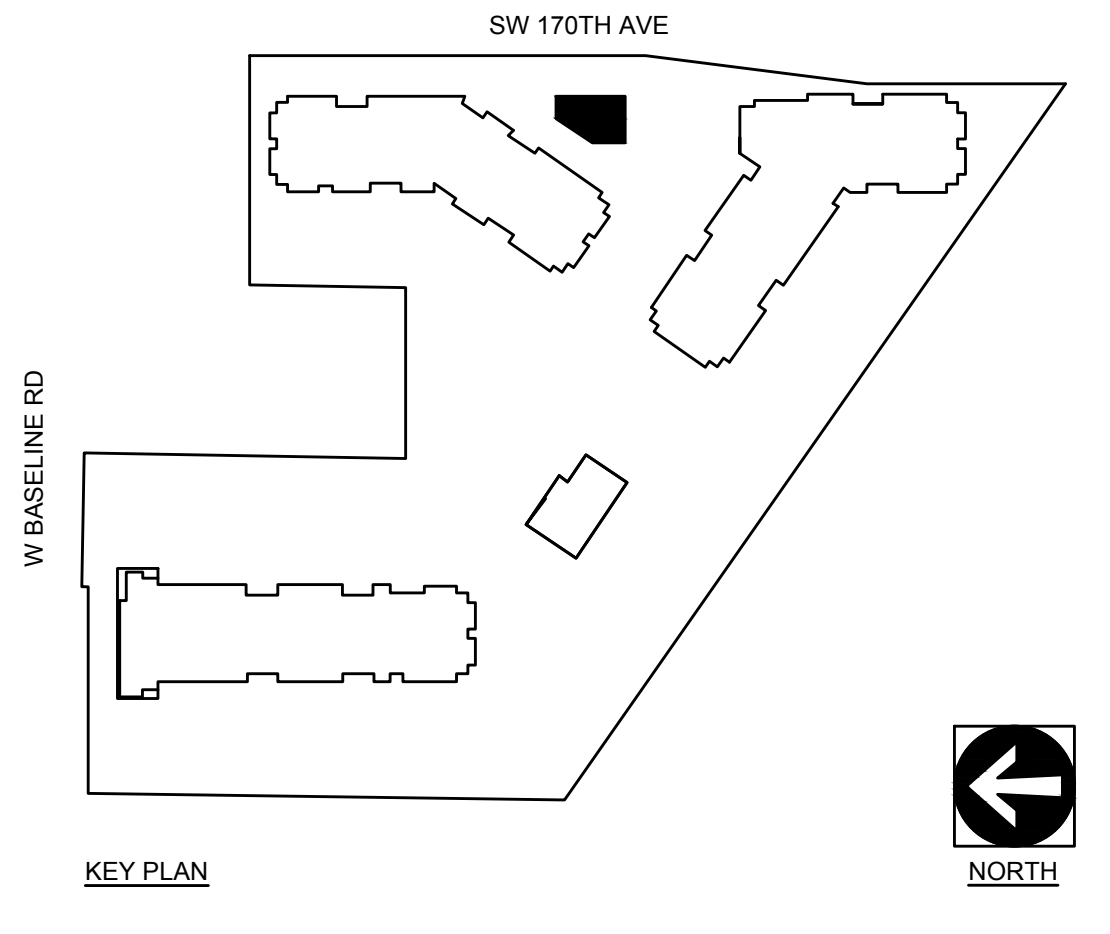
**3 BUILDING 5 - ROOF - PLUMBING PLAN**  
P2.01 SCALE: 1/8" = 1'-0"



**2 BUILDING 5 - LEVEL 1 - PLUMBING PLAN**  
P2.01 SCALE: 1/8" = 1'-0"



**1 BUILDING 5 - UNDER SLAB - PLUMBING PLAN**  
P2.01 SCALE: 1/8" = 1'-0"



MSI MECHANICAL SYSTEMS, INC.  
21195 NW EVERGREEN PARKWAY #201  
HILLSBORO, OR 97124  
PHONE: (503) 466-2222  
FAX: (503) 466-2211

THIS DRAWING WAS PREPARED EXCLUSIVELY FOR USE BY MSI MECHANICAL SYSTEMS, INC.

M CONSULTING ENGINEERS  
3005 S.E. 48th St.  
Portland, OR 97214  
PHONE: (503) 231-6018  
FAX: (503) 231-0077  
INC. 3888811-1361018  
CONTACT: Mark Demery

**ELMONICA STATION APARTMENTS BUILDING 5**  
SW 170TH AND W BASELINE  
REMBOLD PROPERTIES

REVISION	DATE	REASON FOR ISSUE

**PLUMBING PLANS**

**PERMIT SET**

DATE: 09.23.2022 PROJECT NUMBER: 215390  
SHEET NUMBER: P2.01-5