

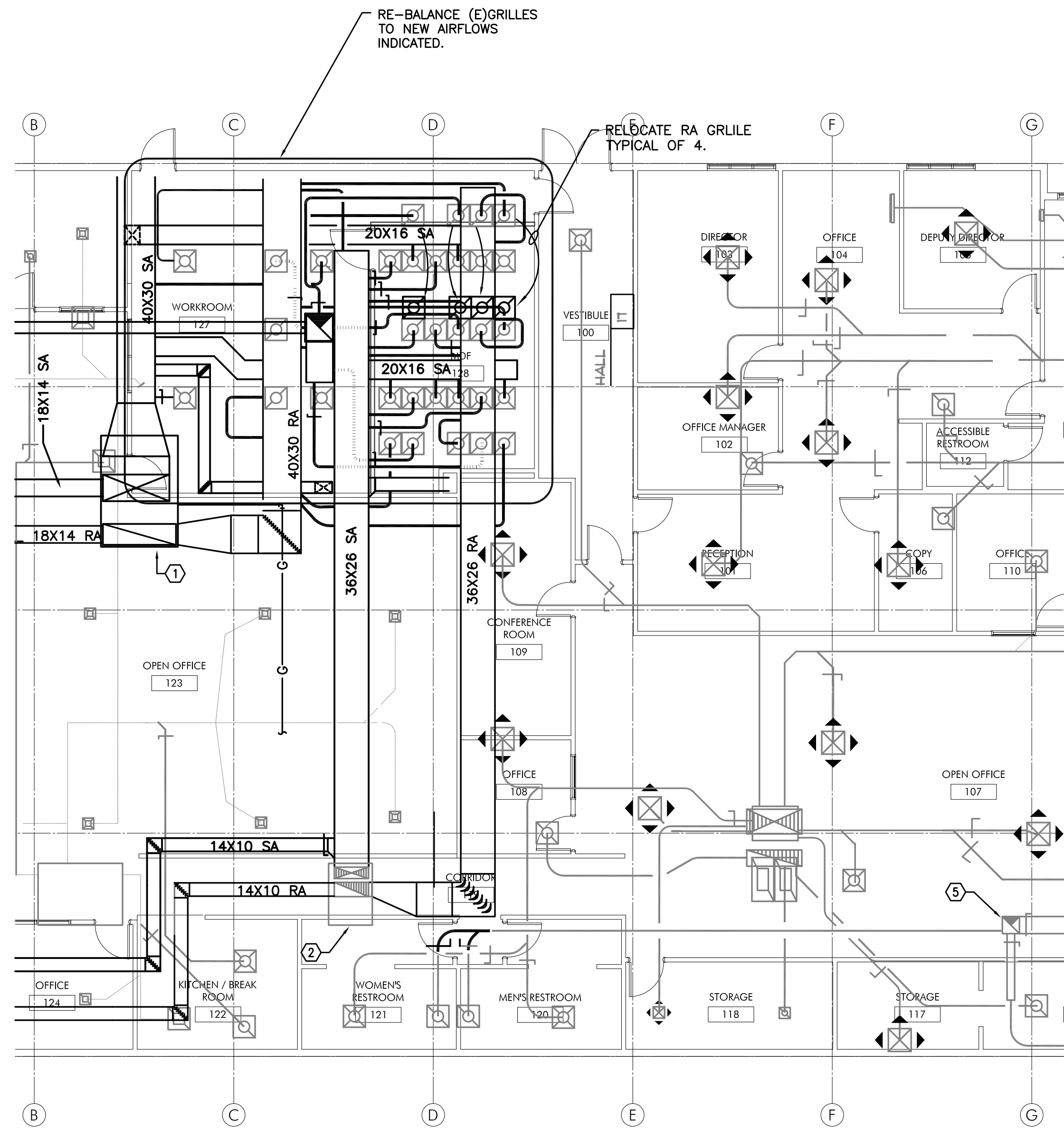
PRELIMINARY  
NOT FOR  
CONSTRUCTION

IN THE EVENT CONFLICTS ARE DISCOVERED  
BETWEEN THE ORIGINAL SIGNED AND SEALED  
DOCUMENTS PREPARED BY THE ARCHITECTS  
AND/OR THEIR CONSULTANTS, AND ANY COPY OF  
THE DOCUMENTS TRANSMITTED BY MAIL, FAX,  
ELECTRONICALLY OR OTHERWISE, THE ORIGINAL  
SIGNED AND SEALED DOCUMENTS SHALL GOVERN.

PROJECT # 20XX-XX  
DATE: 09/29/2019

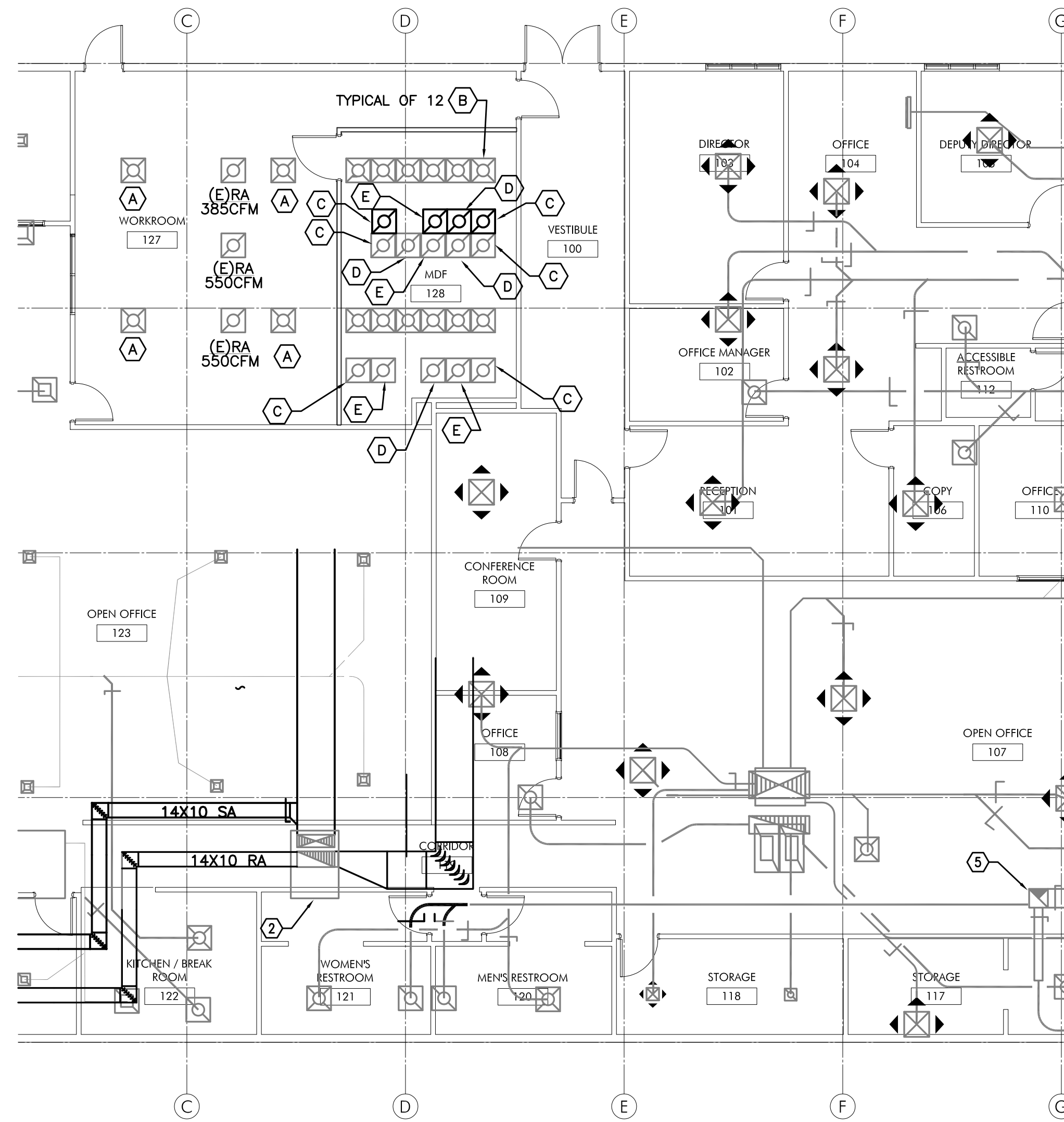
REVISIONS


SERVER ROOM UPGRADE FOR:  
**SALEM-KEIZER SCHOOL DISTRICT  
TECHNOLOGY & INFORMATION SERVICES BUILDING**  
1340 STATE STREET, SALEM, OREGON 97301



**1** MECHANICAL PLAN - ALTERNATE #1  
M2.0A SCALE: 1/8" = 1'-0"

**ALTERNATE #1:**  
ALL HVAC EQUIPMENTS TO REMAIN.  
RELOCATE RA GRILLES INDICATED TO  
NEW SERVER AREA AND RE-BALANCE  
ALL CEILING SUPPLY AND RETURN GRILLES  
IN THE WORK ROOM AND MDF ROOM.



**2** MECHANICAL CEILING PLAN - ALTERNATE #1  
M2.0A SCALE: 1/8" = 1'-0"

KEYED NOTES:

- (A) - BALANCE (E)DIFFUSER TO (E)SA 275CFM
- (B) - BALANCE (E)GRILLE TO (E)SA 750CFM
- (C) - BALANCE (E)GRILLE TO (E)RA 1005CFM
- (D) - BALANCE (E)GRILLE TO (E)RA 1135CFM
- (E) - BALANCE (E)GRILLE TO (E)RA 955CFM

**M  
E  
I  
A**  
INC. Consulting Engineers  
2007 S.E. Ash St.  
Portland, OR 97214  
PHN: (503) 234-0548  
FAX: (503) 234-0677  
WWW.MEIA-ENG.COM  
CONTACT: TAKAKO BAKER

SHEET:  
**M2.0A**