

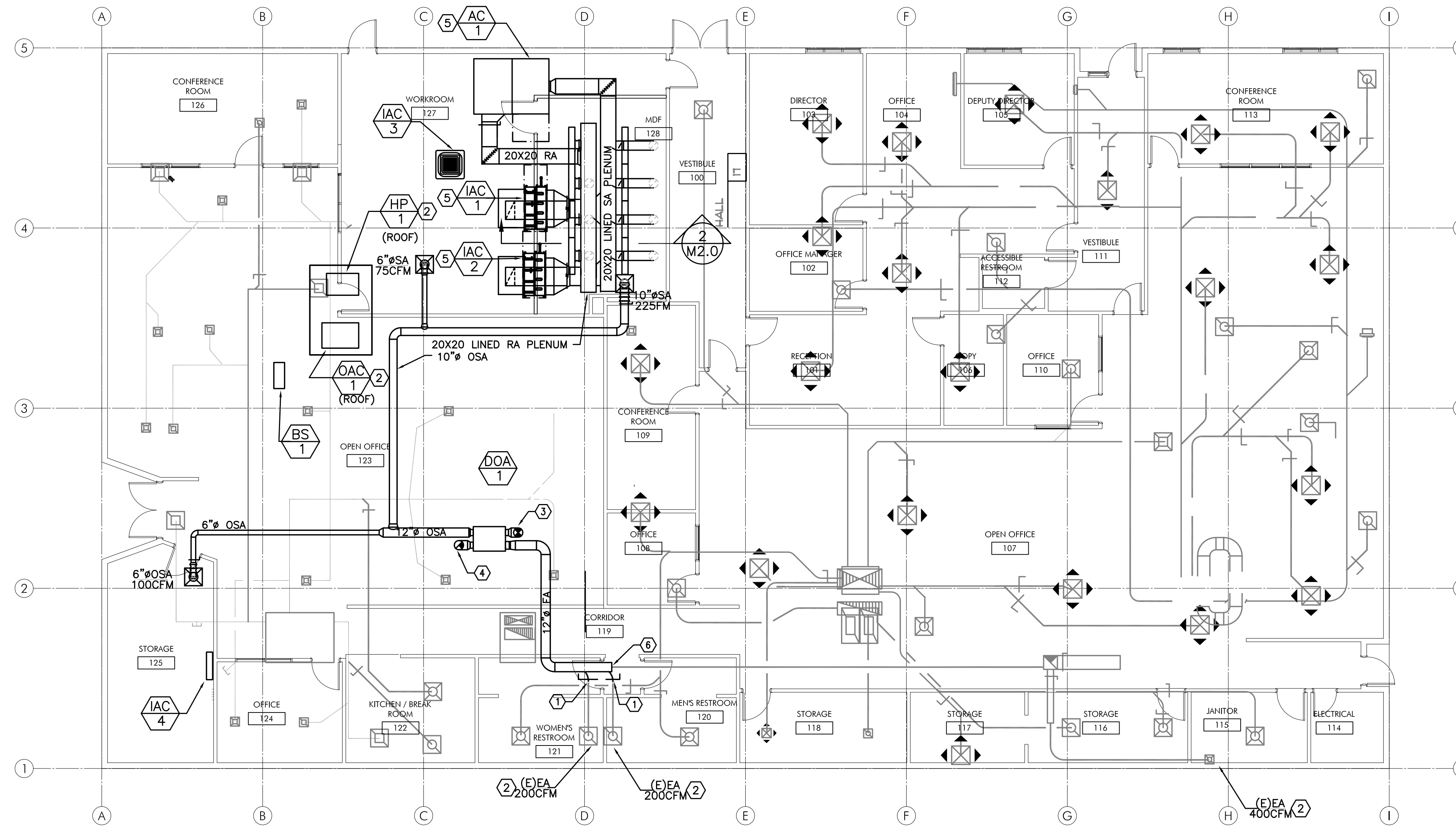
PRELIMINARY
NOT FOR
CONSTRUCTION

IN THE EVENT CONFLICTS ARE DISCOVERED
BETWEEN THE ORIGINAL SIGNED AND SEALED
DOCUMENTS PREPARED BY THE ARCHITECTS
AND/OR THEIR CONSULTANTS, AND ANY COPY OF
THE DOCUMENTS TRANSMITTED BY MAIL, FAX,
ELECTRONICALLY OR OTHERWISE, THE ORIGINAL
SIGNED AND SEALED DOCUMENTS SHALL GOVERN.

PROJECT # 20XX-XX
DATE: 09/29/2019

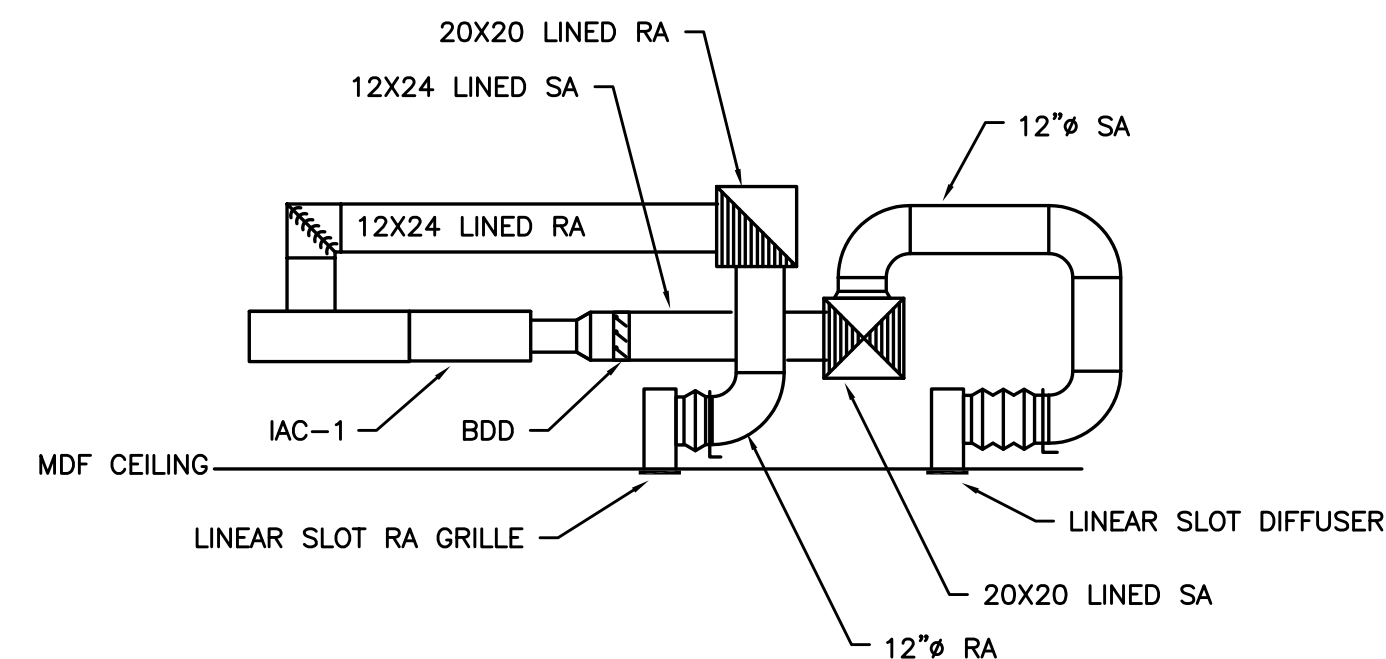
REVISIONS

SERVER ROOM UPGRADE FOR:
**SALEM-KEIZER SCHOOL DISTRICT
TECHNOLOGY & INFORMATION SERVICES BUILDING**
1340 STATE STREET, SALEM, OREGON 97301



- KEYED NOTES: (#)
1. ROTATE (E)TURNING ELBWOS TO THE OPPOSITE AIRFLOW DIRECTION.
 2. INSTALL ON (E)CURB. SEE 4/M6.1.
 3. 12" OSA UP THRU ROOF. SEE 5/M6.1.
 4. 12" EXH DUCT UP THRU ROOF. SEE 5/M6.1.
 5. SEE 6/M6.1 FOR INSTALLATION DETAIL.
 6. (E)EA 12" OSA TO EXISTING.

1 MECHANICAL PLAN
M2.0 SCALE: 1/8" = 1'-0"



2 SECTION
M2.0 SCALE: 1/4" = 1'-00"

M Consulting Engineers
2007 S.E. Ash St.
Portland, OR 97214
PHN: (503) 234-0548
FAX: (503) 234-0677
EA INC. WWW.MFIA-ENG.COM
CONTACT: TAKAKO BAKER

SHEET:

M2.0