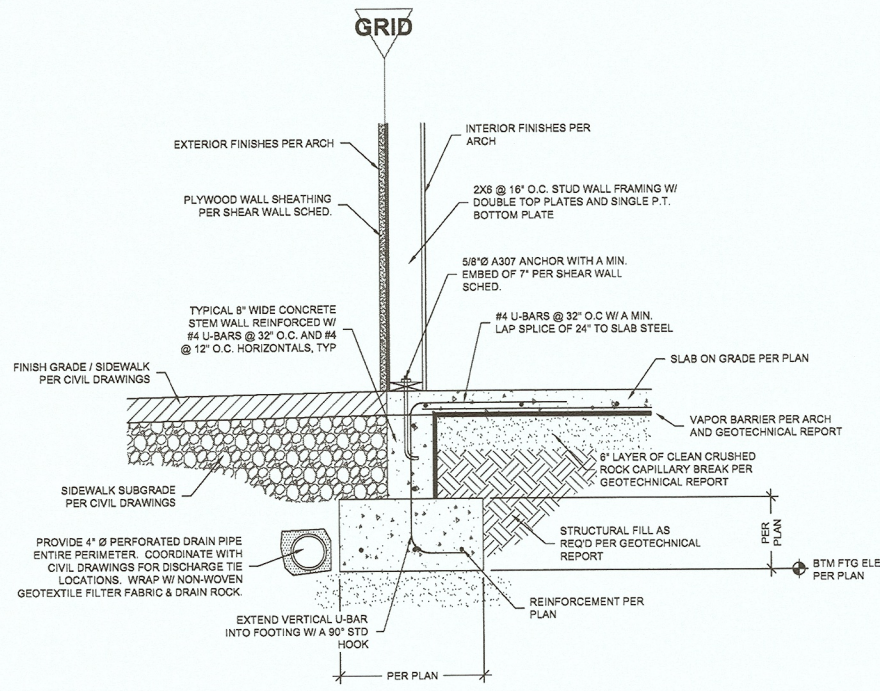
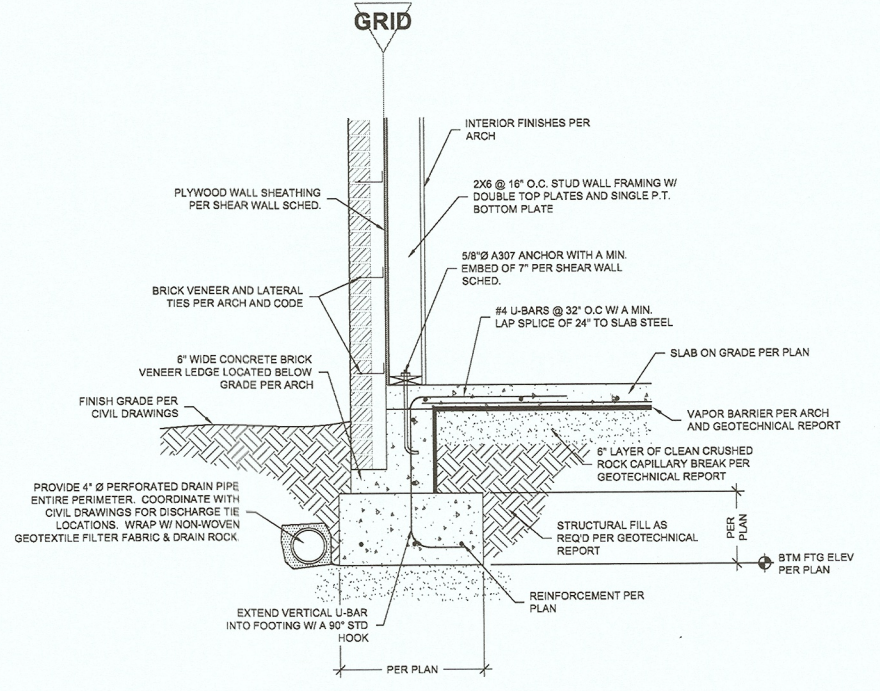


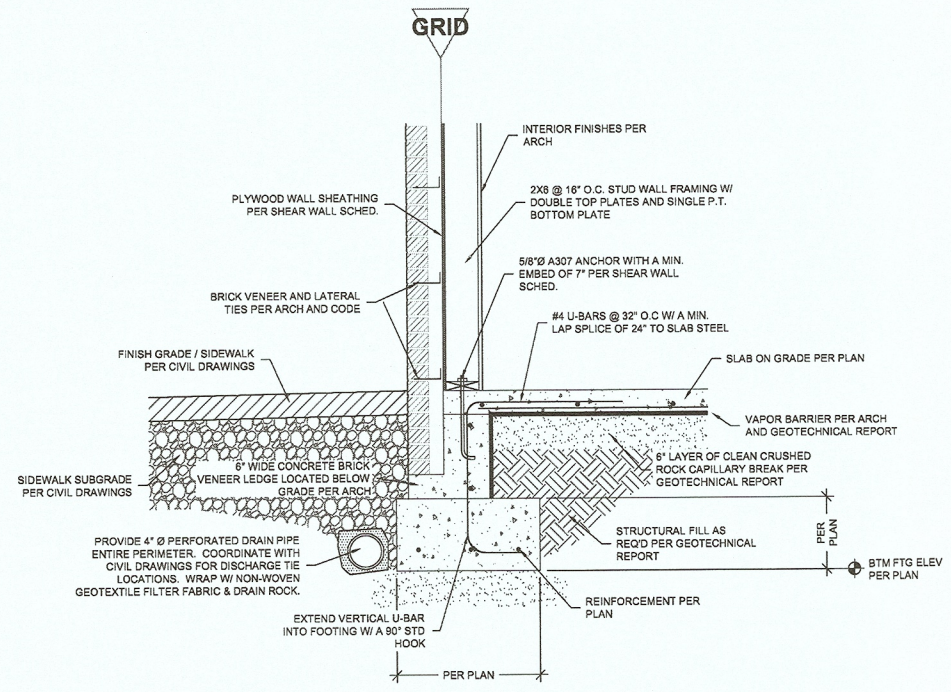
1 TYP. PERIMETER CON'T FOOTING
 S3.1 3/4" = 1'-0"



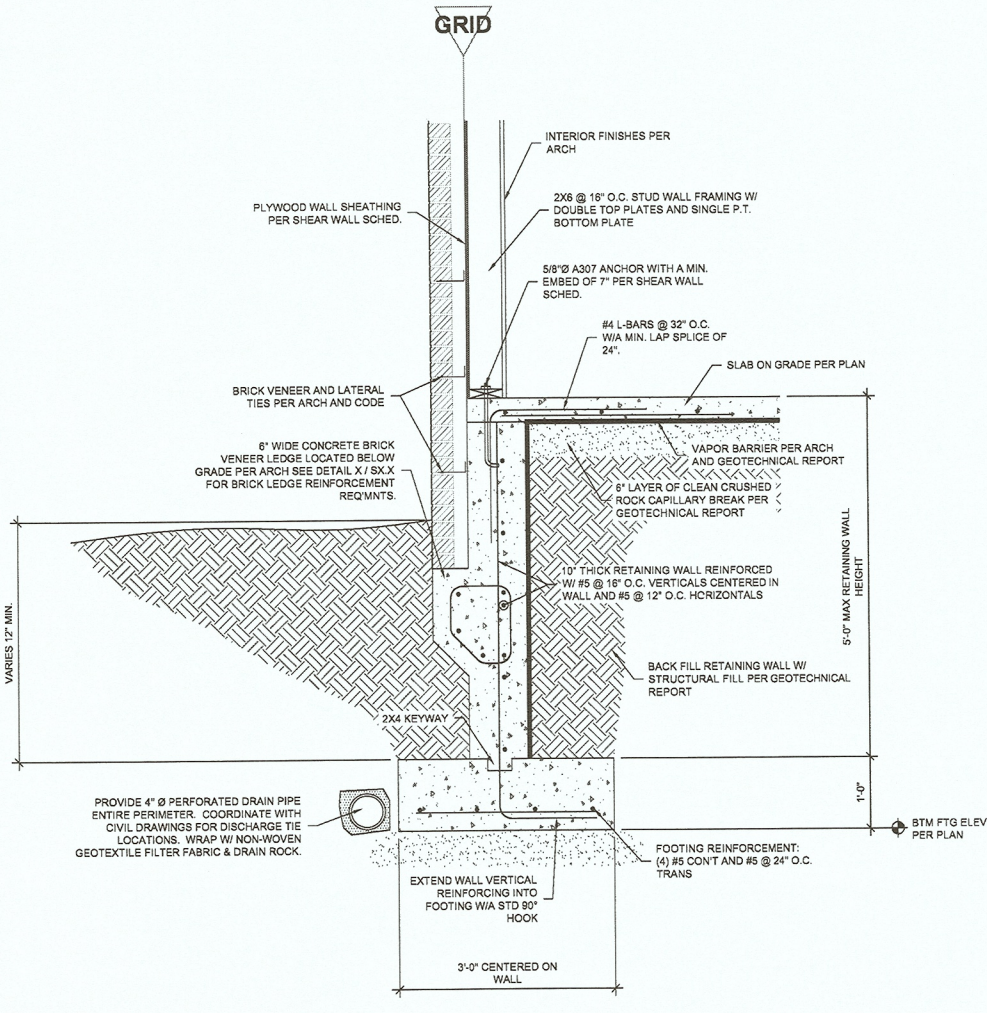
2 TYP. PERIMETER CON'T FOOTING W/ SIDEWALK
 S3.1 3/4" = 1'-0"



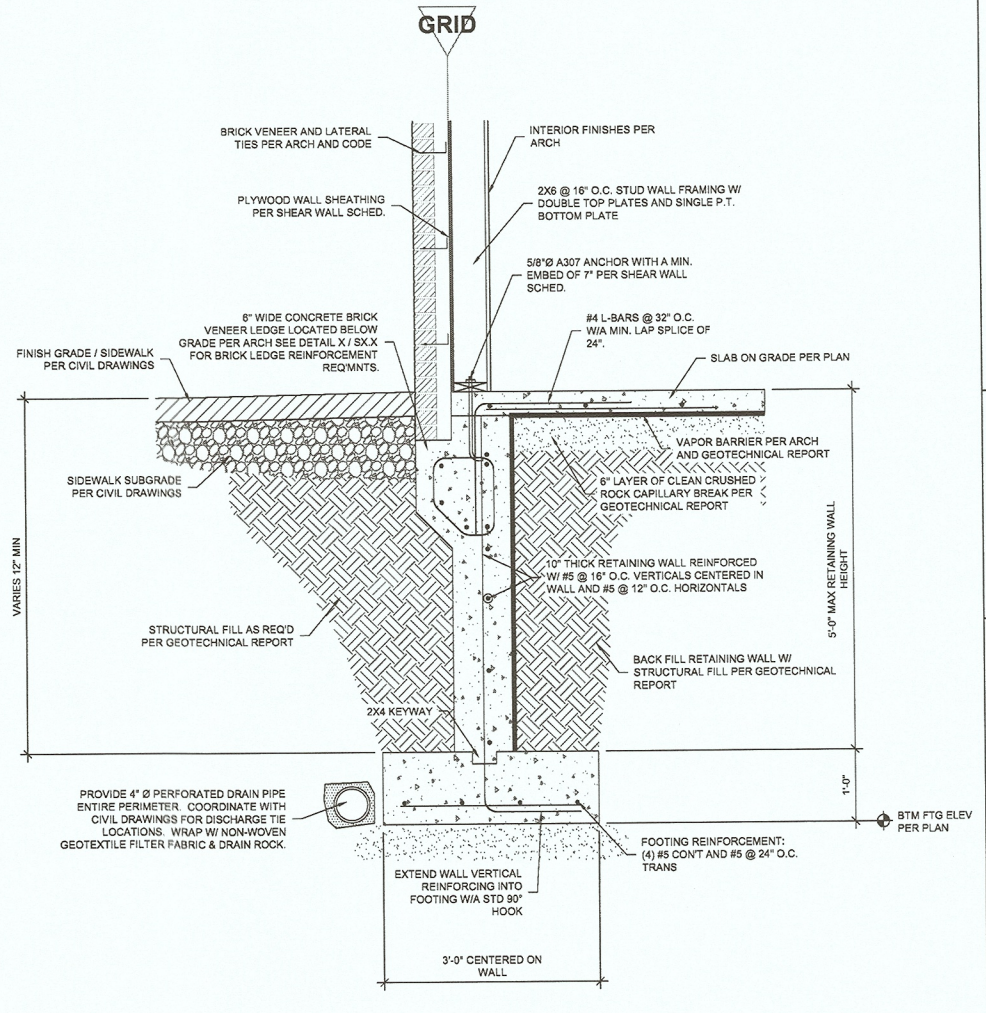
3 TYP. PERIMETER CON'T FOOTING W/ BRICK LEDGE
 S3.1 3/4" = 1'-0"



4 TYP. PERIMETER CON'T FOOTING W/ BRICK LEDGE & SIDEWALK
 S3.1 3/4" = 1'-0"

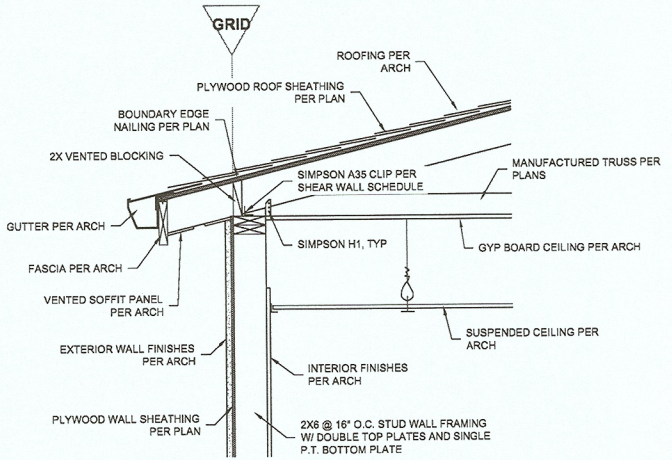


5 TYP. PERIMETER 5'-0" TALL RETAINING WALL
 S3.1 3/4" = 1'-0"

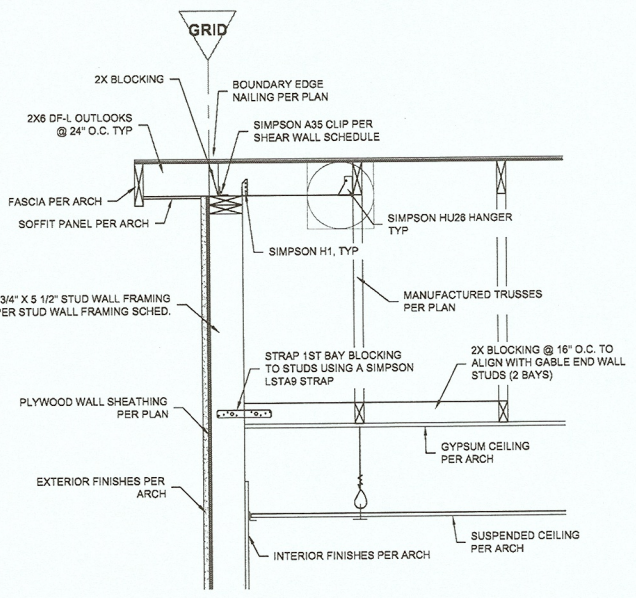


6 TYP. PERIMETER 5'-0" TALL RETAINING WALL W/ SIDEWALK
 S3.1 3/4" = 1'-0"

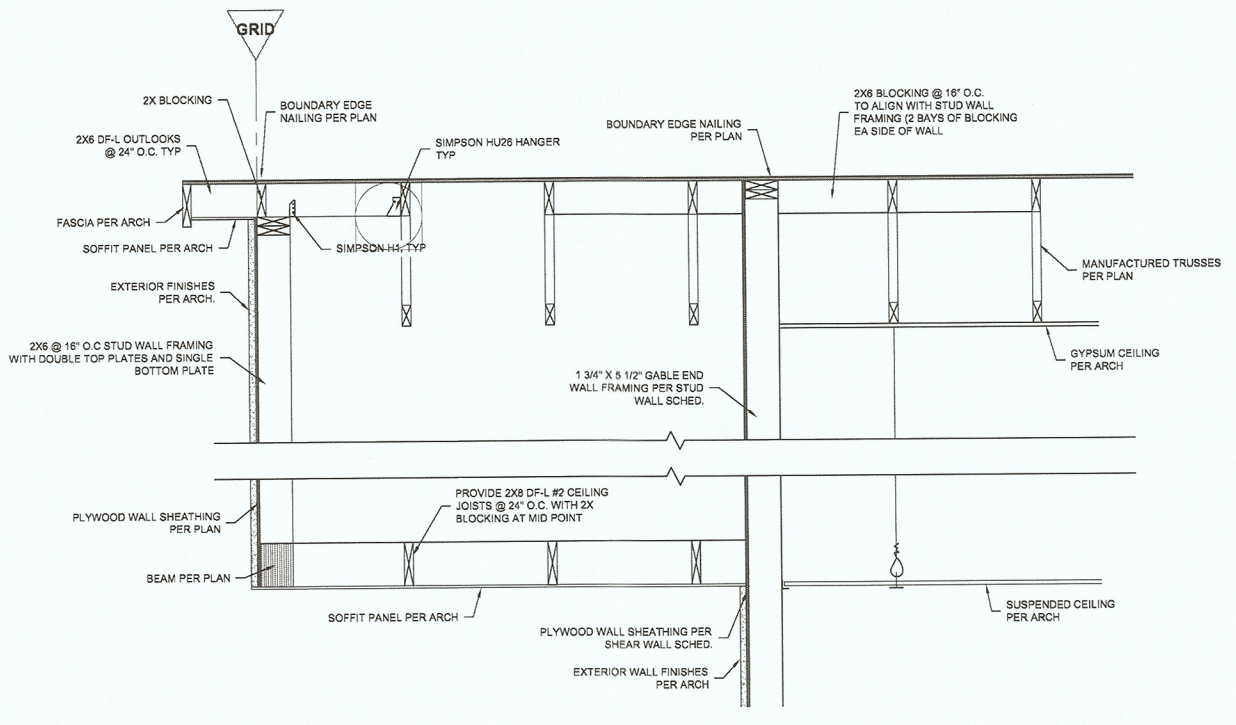
K:\New File Structure\Projects\2007\44188-07.DLR\Group\BellviewElementary\Structural\Drawings\Structural\Detail\Current\CDI.dwg
 Mar 10, 2008 12:53pm - jashhoon



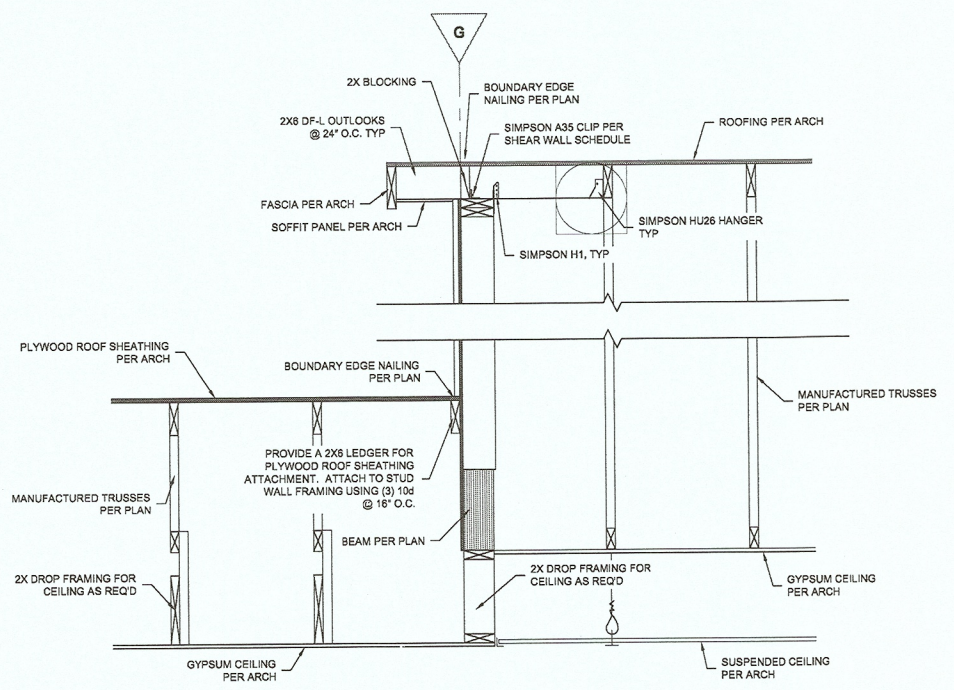
1 TYP. MANU. TRUSS TO EXTERIOR WALL
 S3.15 3/4" = 1'-0"



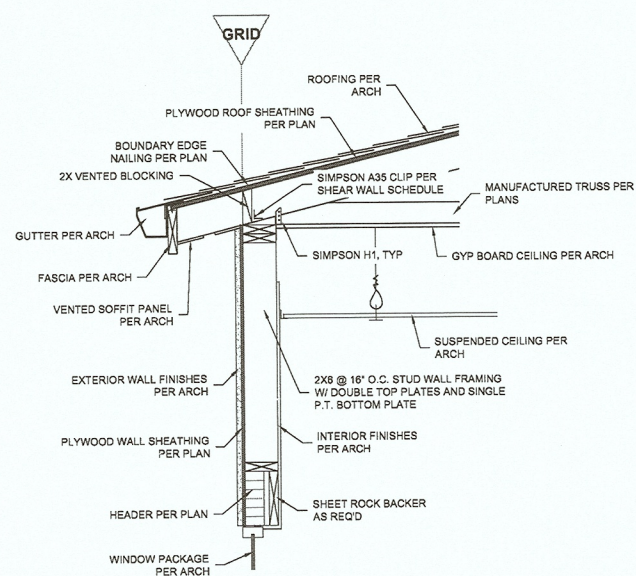
2 TYP. GABLE END DETAIL
 S3.15 3/4" = 1'-0"



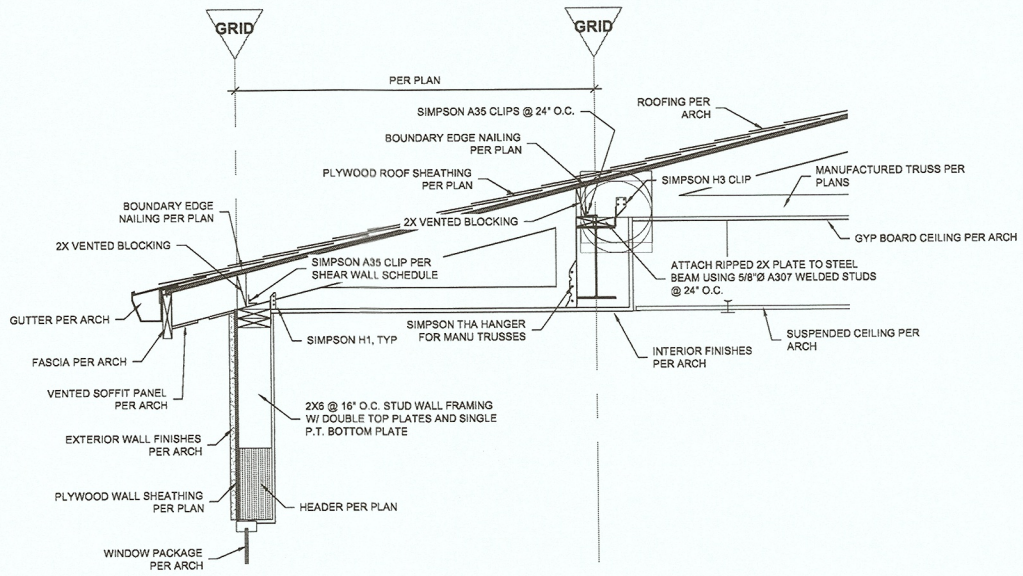
3 TYP. GABLE END DETAIL @ EXTERIOR SIDE ENTRY DOORS
 S3.15 3/4" = 1'-0"



4 GABLE END DETAIL @ PLATE STEP @ A108 TO A109
 S3.15 3/4" = 1'-0"

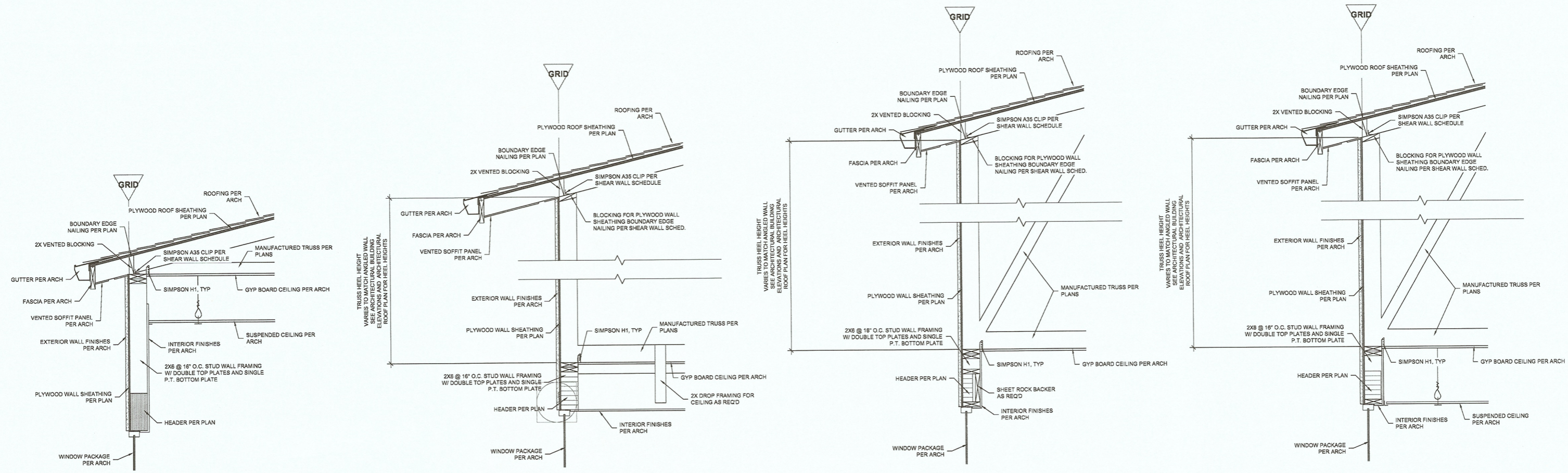


5 MANUF. TRUSS TO WALL W/ 3/8" GLB HDR
 S3.15 3/4" = 1'-0"



6 MANUF. TRUSS TO WALL DETAIL @ CLASS ROOM BAYS
 S3.15 3/4" = 1'-0"

K:\New Files - Structural\BELLVIEW ELEMENTARY\Structural\Drawings\Structural\Drawings\4458-07 Structural Details (Current CTD) dwg
 Mar 10, 2008 2:46pm - Job:bellview

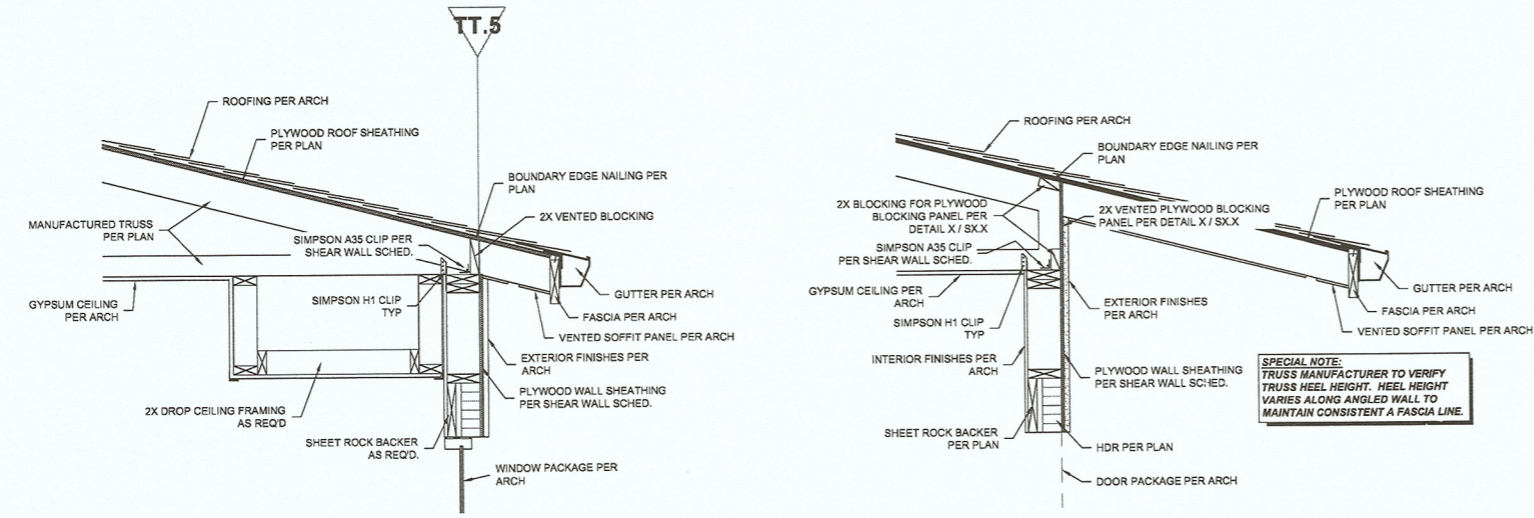


1 MANUF. TRUSS TO WALL W/ 5 1/4" LVL HDR
 S3.16 3/4" = 1'-0"

2 MANUF. TRUSS TO WALL W/ HIGH HEEL TRUSS @ A108
 S3.16 3/4" = 1'-0"

3 HIGH HEEL TRUSS TO WALL W/ 3 1/8" GLB HDR
 S3.16 3/4" = 1'-0"

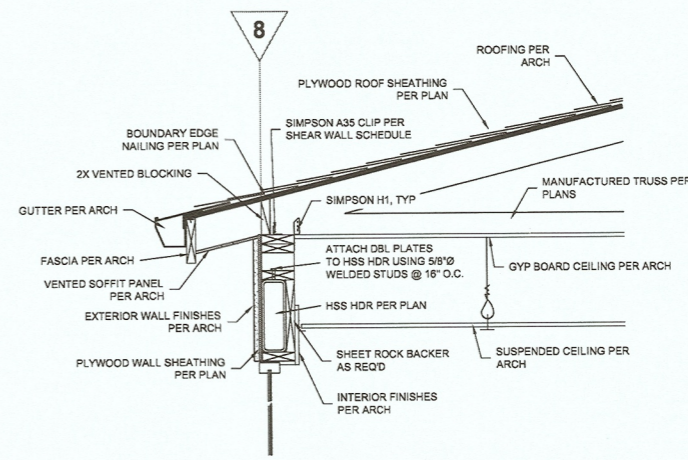
4 HIGH HEEL TRUSS TO WALL W/ 5 1/8" GLB HDR
 S3.16 3/4" = 1'-0"



SPECIAL NOTE:
 TRUSS MANUFACTURER TO VERIFY
 TRUSS HEEL HEIGHT. HEEL HEIGHT
 VARIES ALONG ANGLED WALL TO
 MAINTAIN CONSISTENT A FASCIA LINE.

5 MANUF. TRUSS TO WALL @ MEDIA CENTER
 S3.16 3/4" = 1'-0"

6 MANUF. TRUSS TO WALL @ ANGLE WALL CONDITION
 S3.16 3/4" = 1'-0"

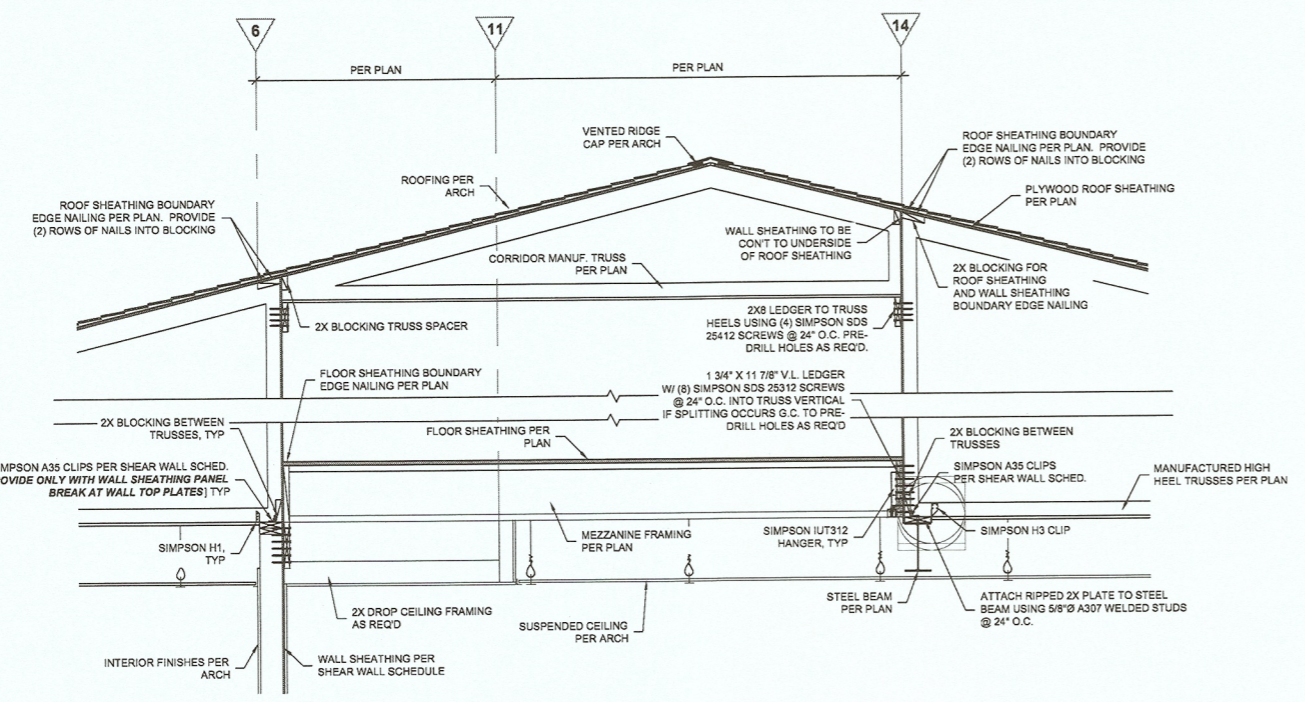


7 MANUF. TRUSS TO WALL @ STUDENT COMMONS
 S3.16 3/4" = 1'-0"

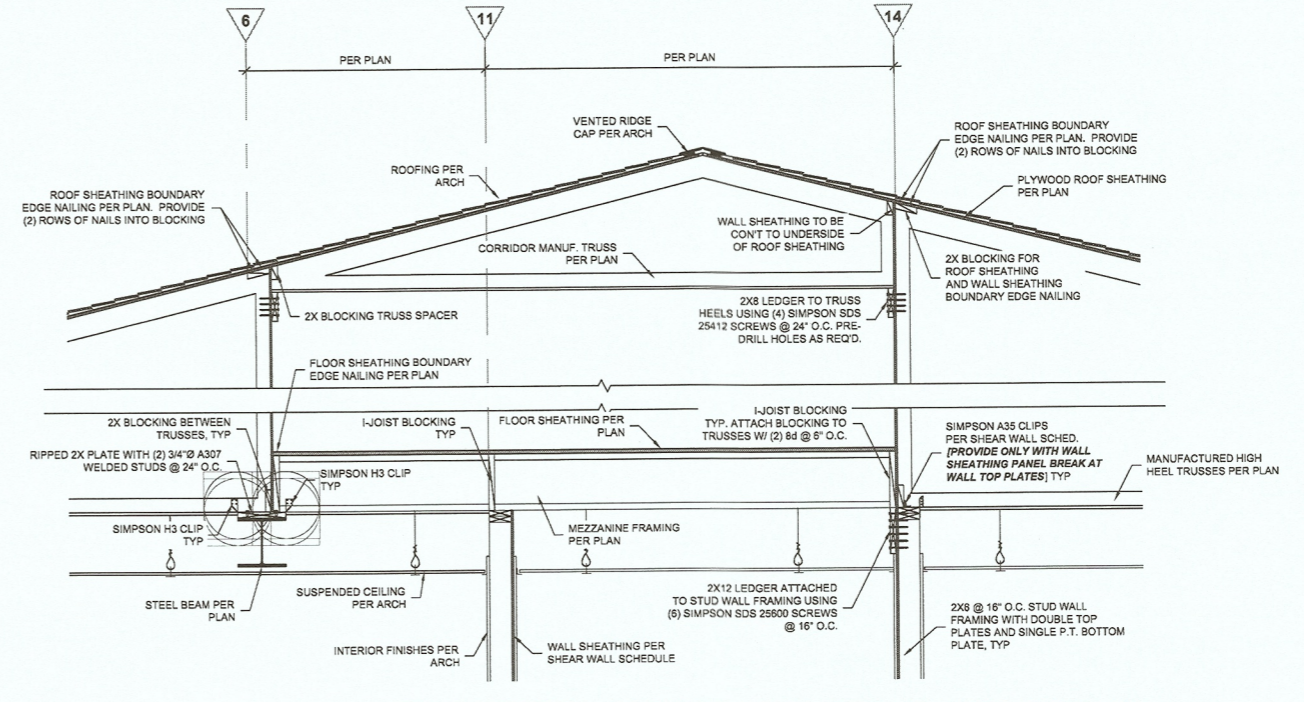
K:\New File Structures\F Projects\2007\4-458-07 DL Group BellviewElementary\Structural\Drawings\Structural\Drawings\Current\CD\Jawg
 Mar 10, 2008 12:45pm - jashkocin

ROOF FRAMING DETAILS
 BELLVIEW ELEMENTARY
 QA DRAWING SET

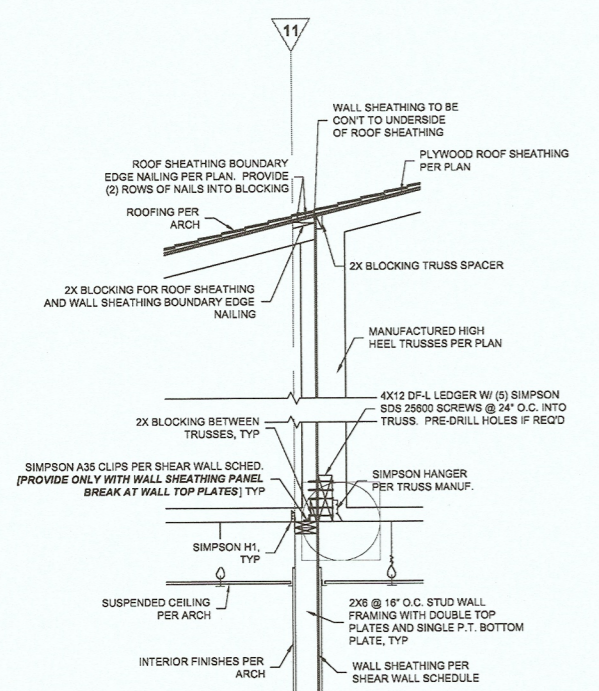
S3.16
 74-07105-30
 03-10-08



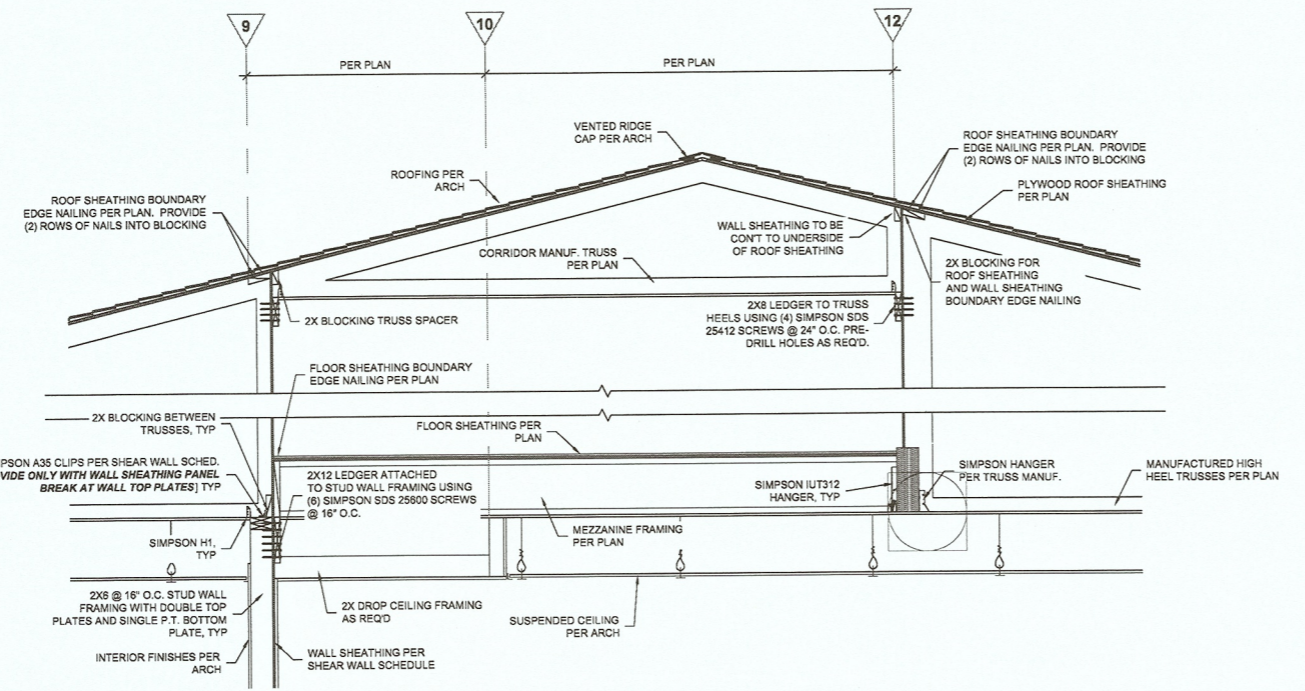
1 MANU. TRUSSES TO INTERIOR BEARINGS @ CORRIDOR A109 W/ STEEL BEAM HDR
 S3.18 1/2" = 1'-0"



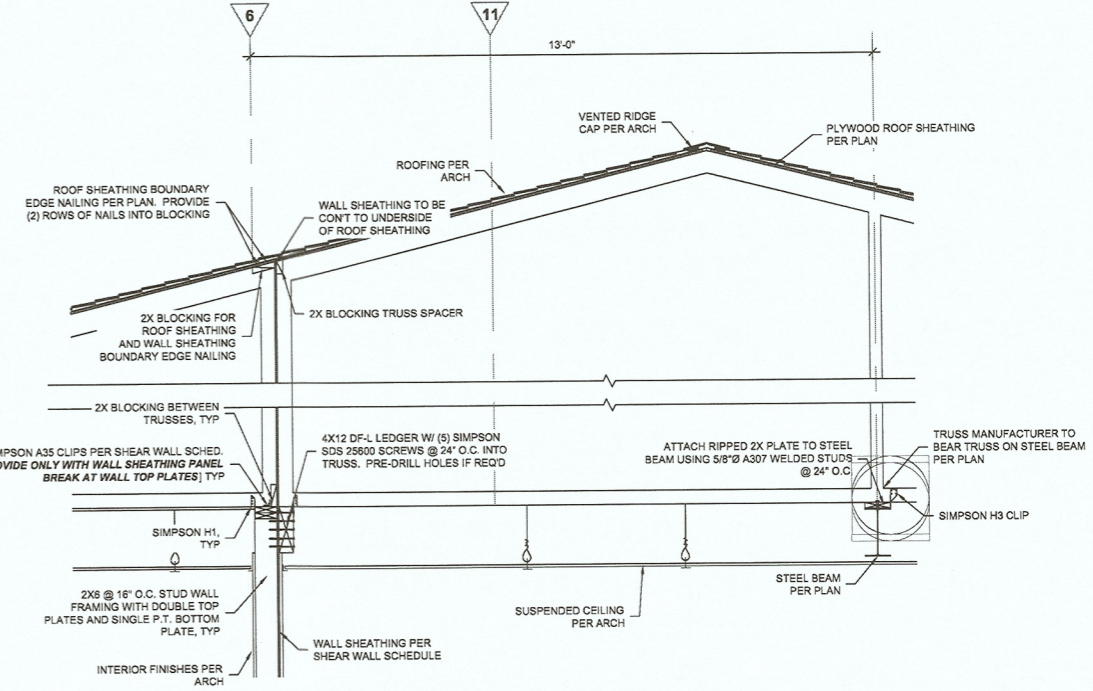
2 MANU. TRUSSES TO INTERIOR BEARINGS @ CORRIDOR A109 W/ STEEL BEAM HDR ABOVE A104
 S3.18 1/2" = 1'-0"



3 MANU. TRUSSES TO INTERIOR BEARINGS @ CORRIDOR A109
 S3.18 1/2" = 1'-0"

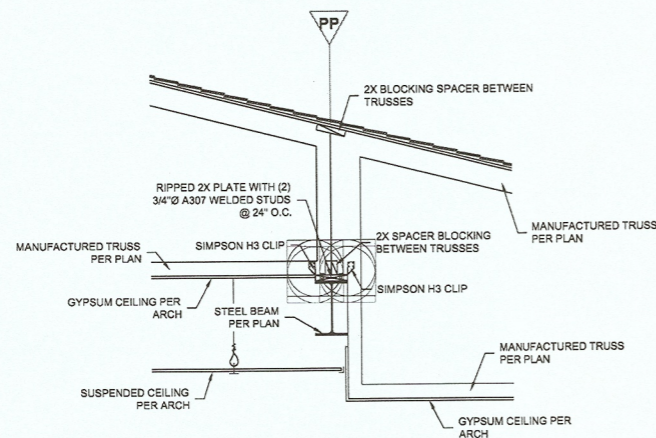


4 MANU. TRUSSES TO INTERIOR BEARINGS @ CORRIDOR B125
 S3.18 1/2" = 1'-0"

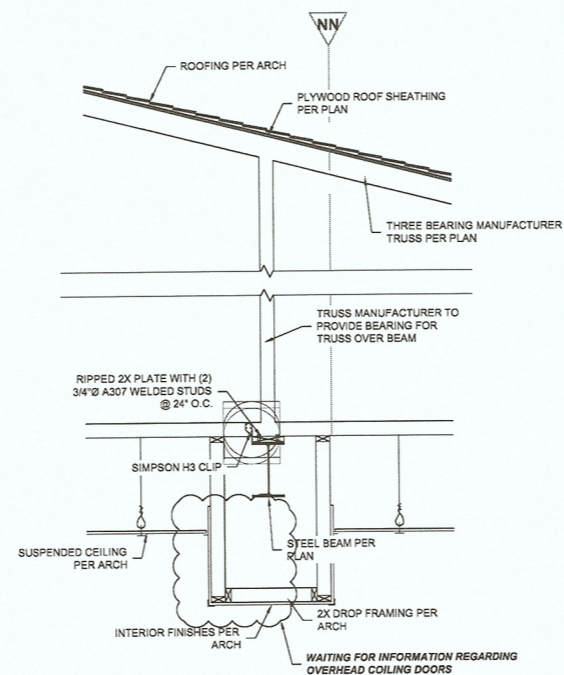


5 MANU. TRUSSES TO INTERIOR BEARINGS @ CORRIDOR B125 W/O MECH MEZZANINE
 S3.18 1/2" = 1'-0"

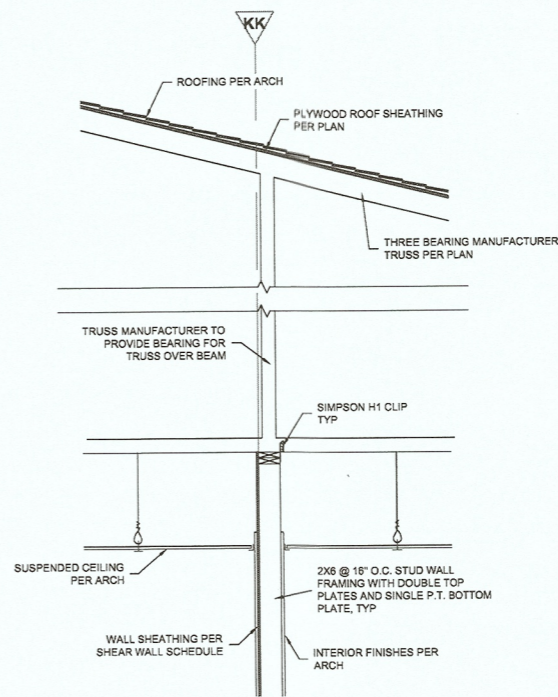
K:\New File Structure\KF Projects\2007\4458-07 DL R Group BellviewElementary\Structural\Drawings\Structural Details\Detail C01.dwg
 Mar 10, 2008 12:44pm - jashbodin



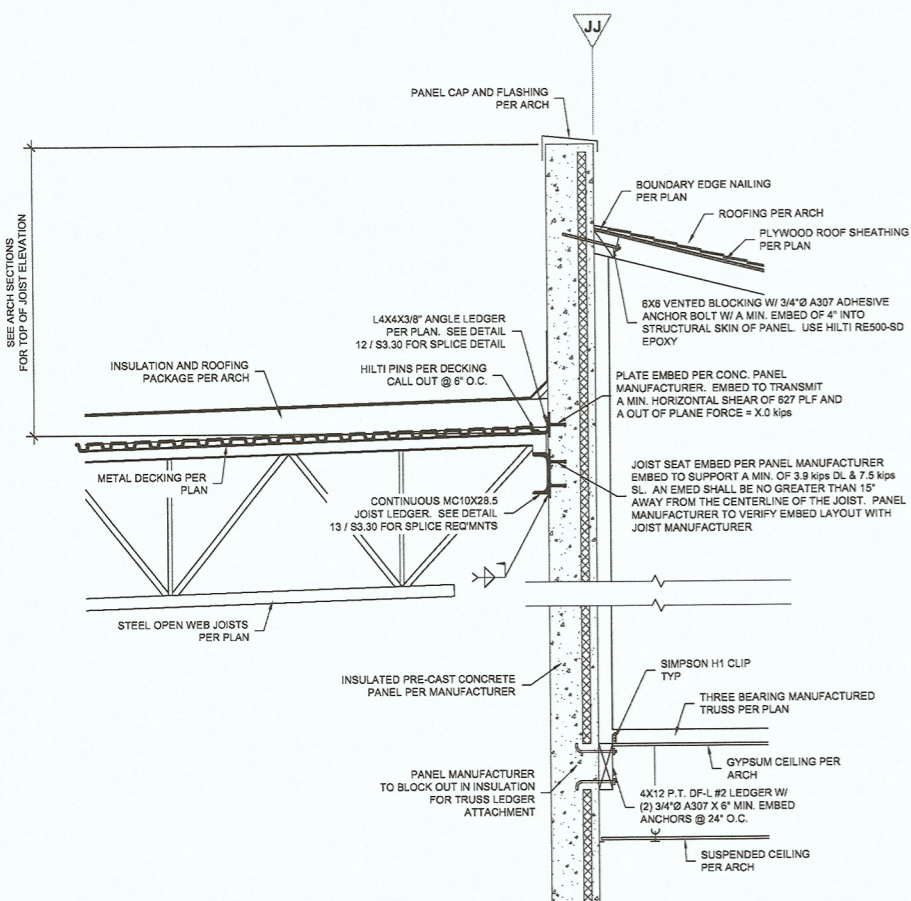
1 MANU. TRUSSES TO INT BRGS @ MEDIA W/ STEEL HDR
 S3.19 1/2" = 1'-0"



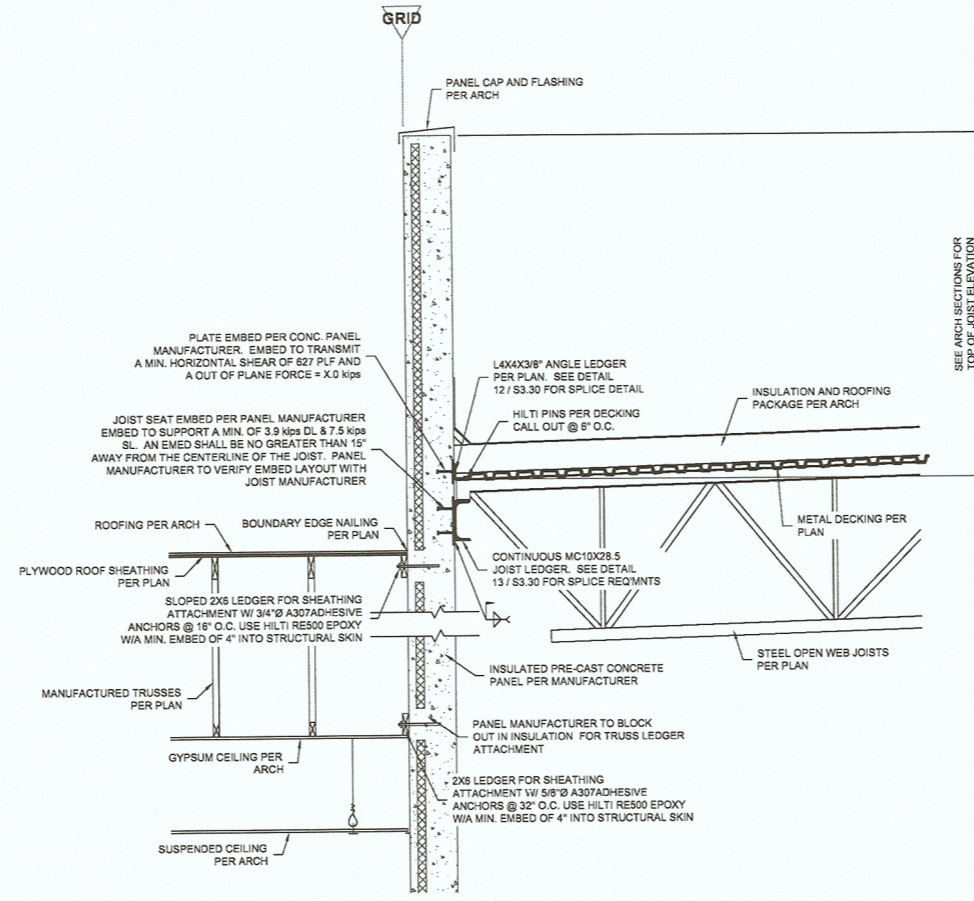
2 MANU. TRUSSES TO INT BRGS @ MEDIA CENTER
 S3.19 1/2" = 1'-0"



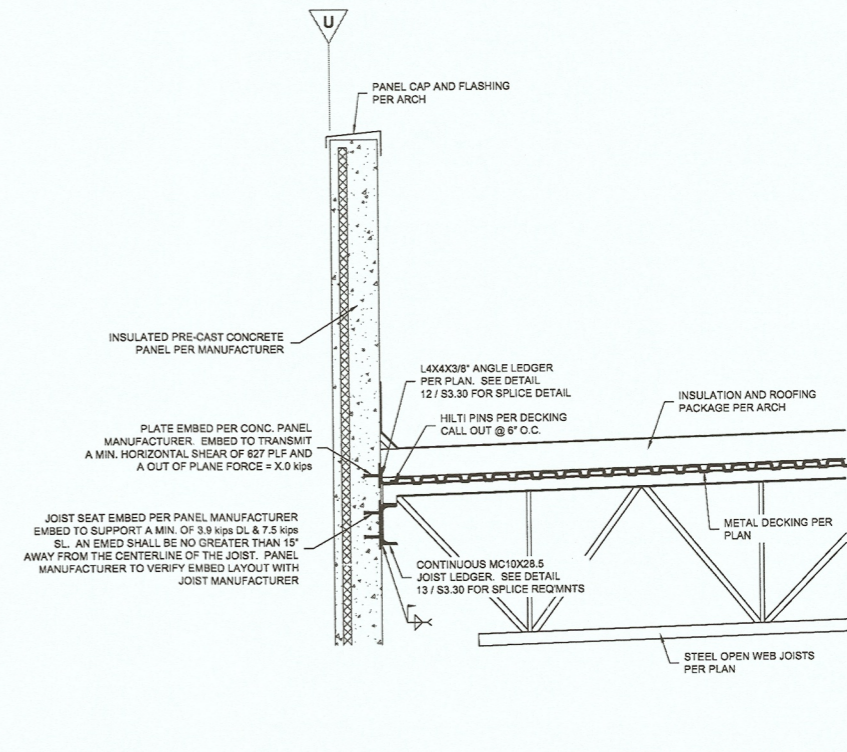
3 THREE BEARING TRUSS SUPPORTED ON INTERIOR BEARING WALL
 S3.19 1/2" = 1'-0"



4 MUSIC ROOM / GYM FRAMING MEDIA CENTER
 S3.19 1/2" = 1'-0"



5 STAGE ROOM FRAMING TO CORRIDOR B100 & RM B103
 S3.19 1/2" = 1'-0"

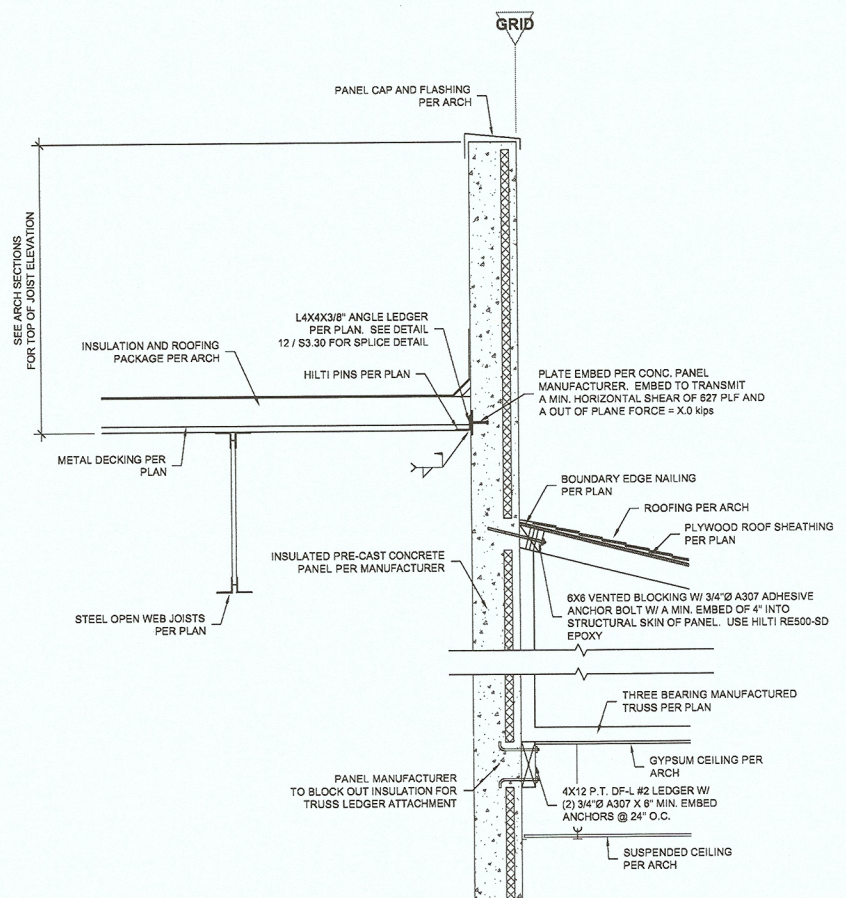


6 OPEN WEB STEEL JOIST TO PRE-CAST PANEL DETAIL
 S3.19 1/2" = 1'-0"

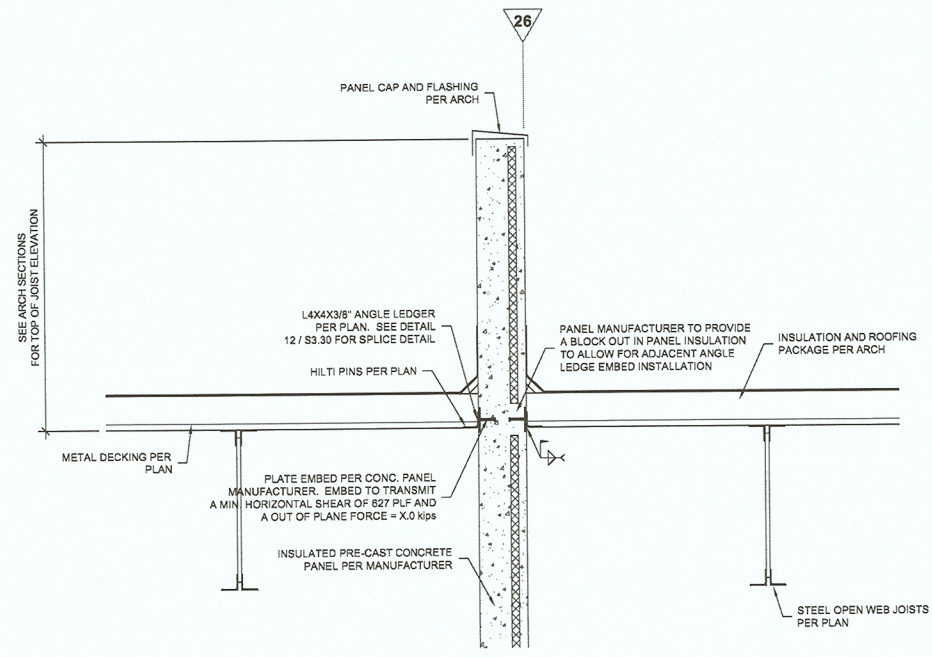
K:\New Files\Structural\Projects\2007\4458-07 DL Group BellviewElementary\Structural\Drawings\Structural\Detail\Current\CD.dwg
 Mar 10, 2008 12:43pm - jshahidin

ROOF FRAMING DETAILS
 BELLVIEW ELEMENTARY
 QA DRAWING SET

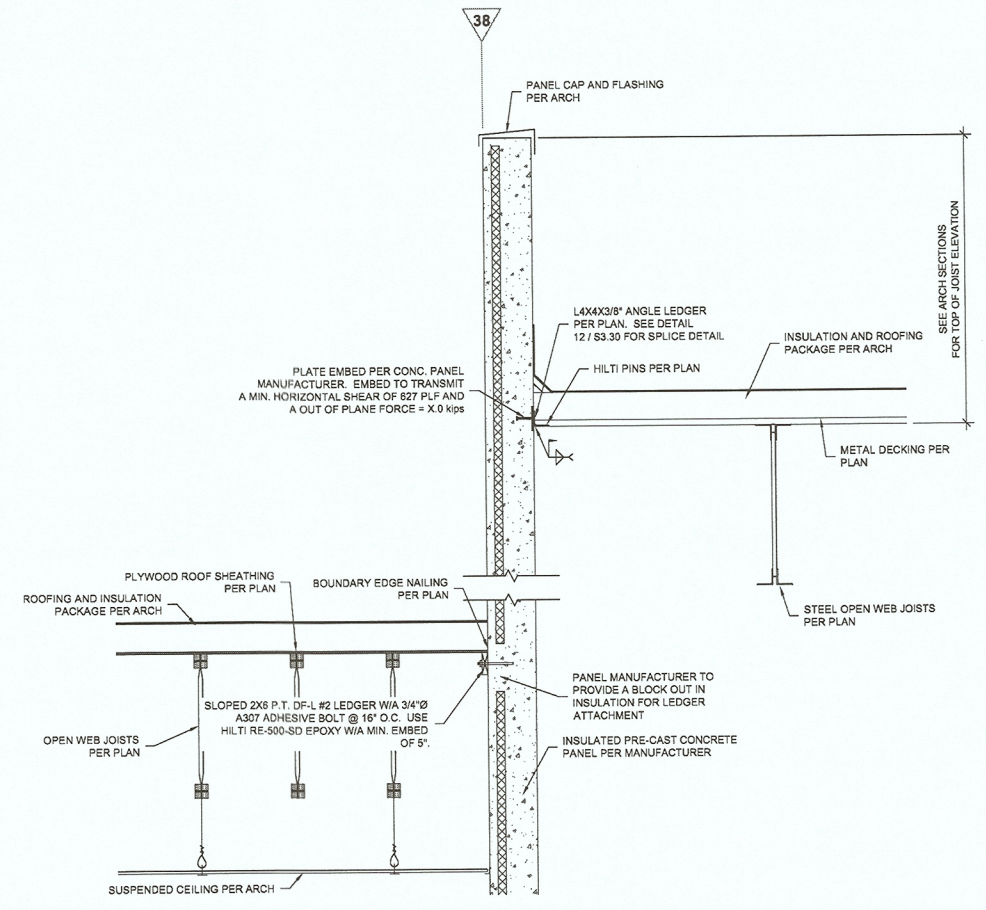
S3.19
 74-07105-30
 03-10-08



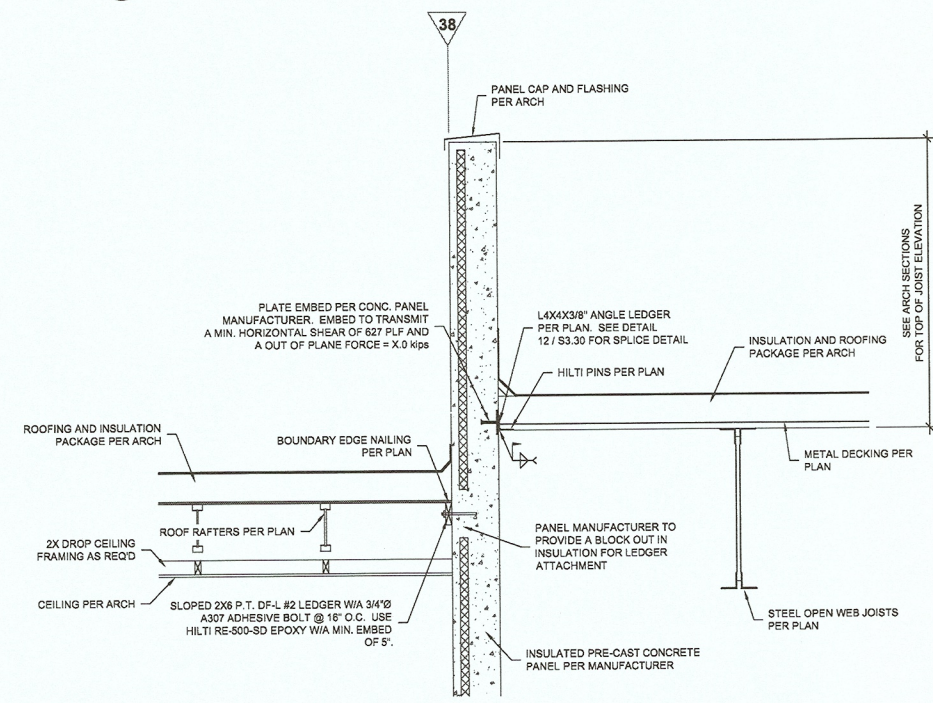
1 STAGE ROOF FRAMING TO STUDENT COMMONS DETAIL
 S3.20 1/2" = 1'-0"



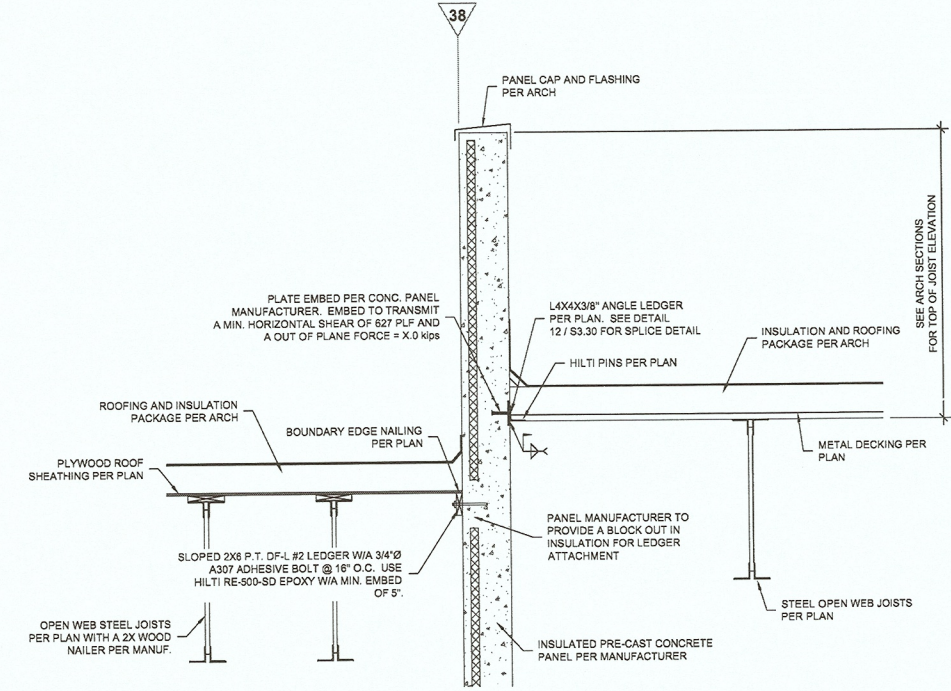
2 GYM TO STAGE ROOF FRAMING DETAIL
 S3.20 1/2" = 1'-0"



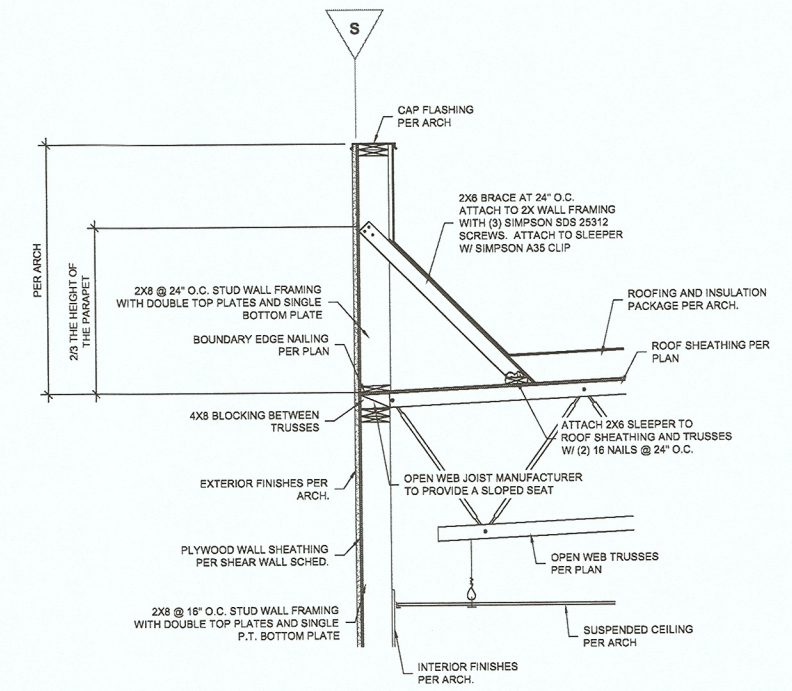
3 GYM TO CAFETERIA ROOF FRAMING DETAIL
 S3.20 1/2" = 1'-0"



4 GYM TO CORRIDOR C213 W/ I-JOIST RAFTERS
 S3.20 1/2" = 1'-0"

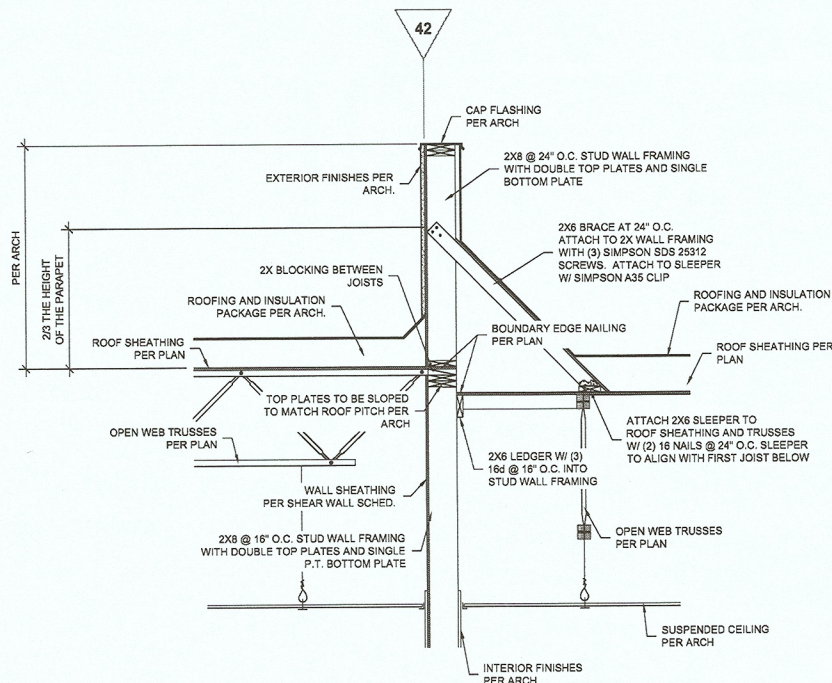


5 GYM TO CORRIDOR C213 W/ OPEN WEB STEEL JOISTS
 S3.20 1/2" = 1'-0"

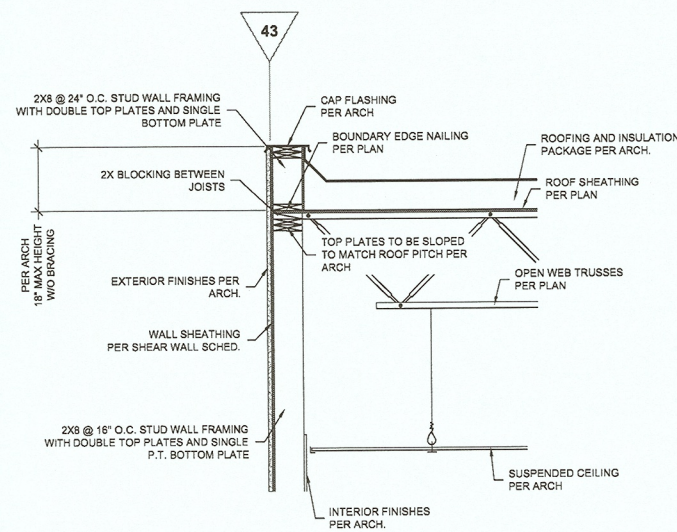


6 TYP. OPEN WEB JOIST [PERP] TO WALL @ CAFE
 S3.20 1/2" = 1'-0"

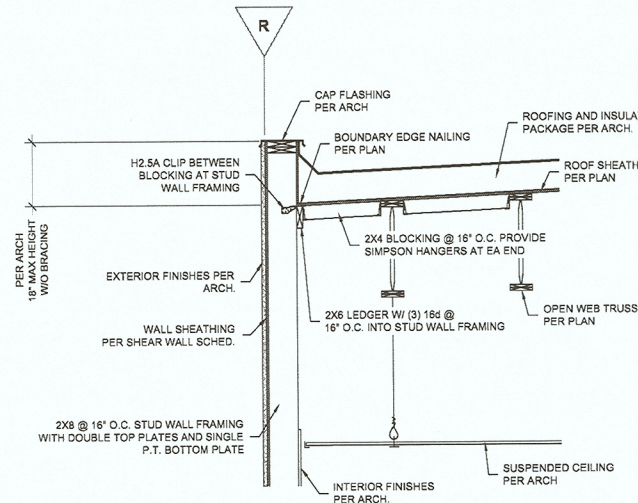
K:\New Files\Structural\Projects\2007\4-455-07 DLRC\Group BellviewElementary\Structural\Drawings\Structural\Drawings\Current CDJ.dwg
 Mar 10, 2008 12:42pm - joshw@dlr



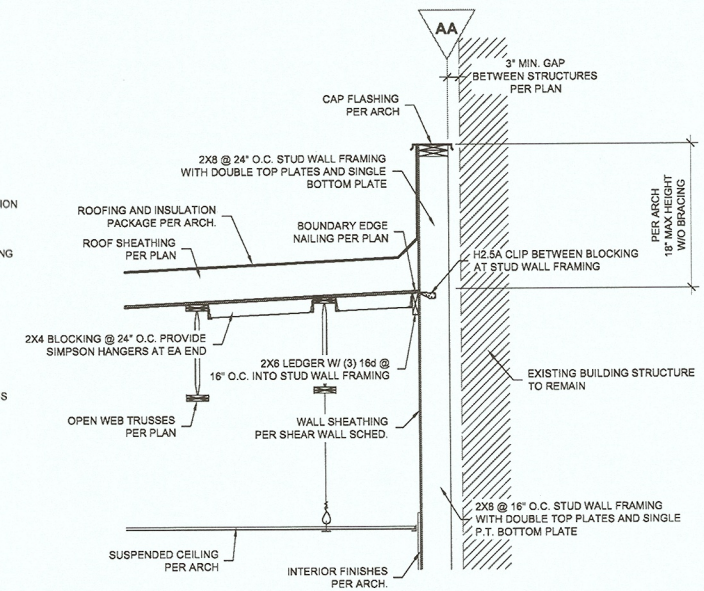
1 OPEN WEB TO WALL @ CAFE TO KITCHEN TRANSITION
 S3.21 1/2" = 1'-0"



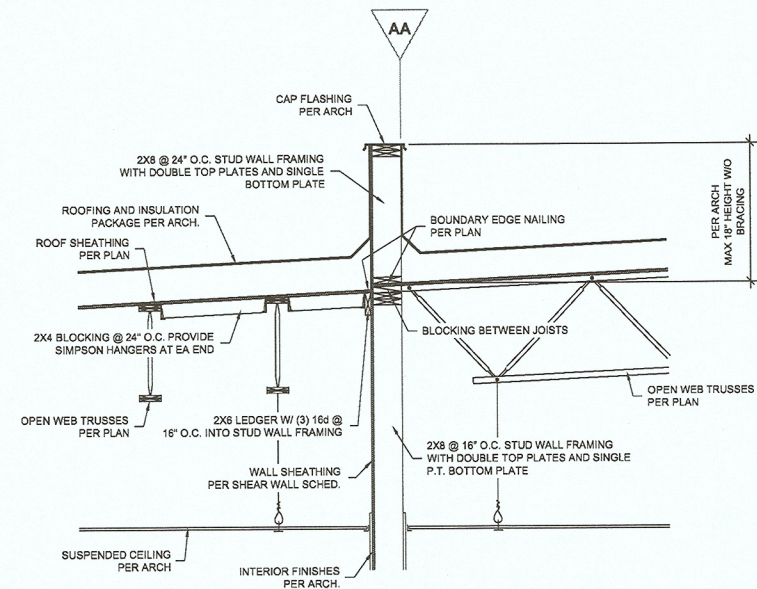
2 OPEN WEB [PERP] TO WALL @ KITCHEN
 S3.21 1/2" = 1'-0"



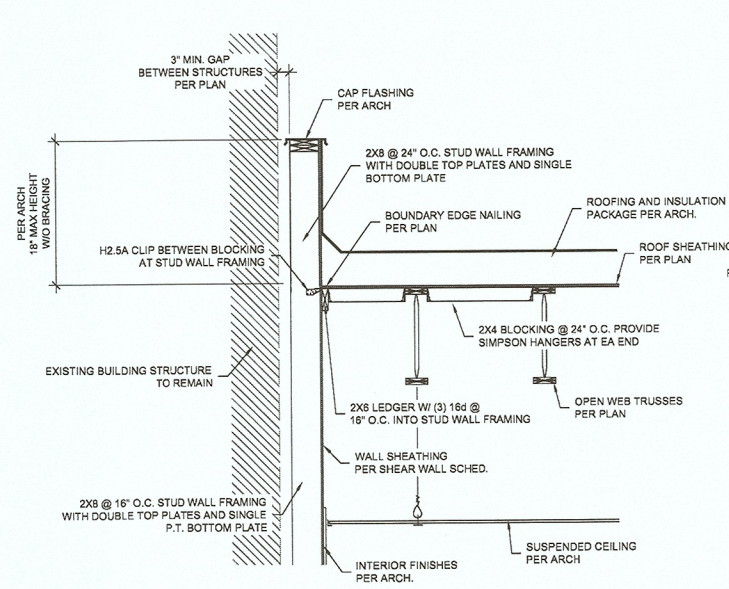
3 OPEN WEB [PARALLEL] TO WALL @ KITCHEN
 S3.21 1/2" = 1'-0"



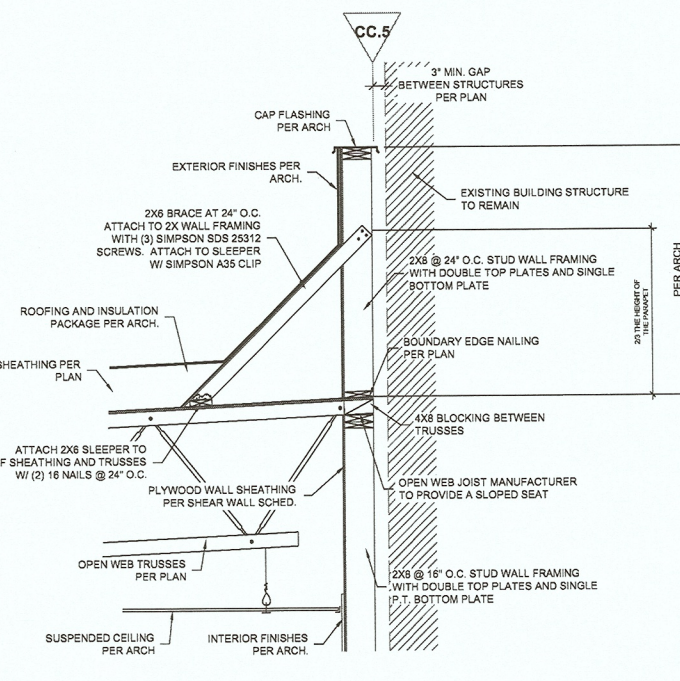
4 OPEN WEB TO WALL @ KITCHEN TO EXTG BUILDING
 S3.21 1/2" = 1'-0"



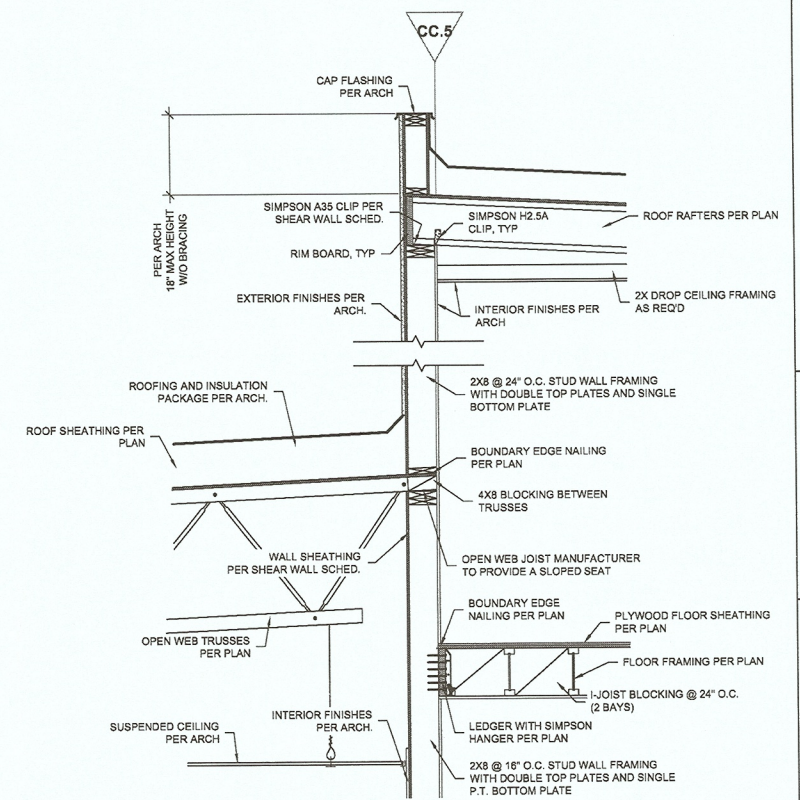
5 OPEN WEB TO WALL @ KITCHEN TO TOILET ROOM TRANSITION
 S3.21 1/2" = 1'-0"



6 OPEN WEB TO WALL @ TOILET ROOMS TO EXTG BUILDING
 S3.21 1/2" = 1'-0"



7 OPEN WEB TO WALL @ CAFE TO EXTG BUILDING
 S3.21 1/2" = 1'-0"



8 CAFE TO CORRIDORS C106 & C213 TRANSITION
 S3.21 1/2" = 1'-0"

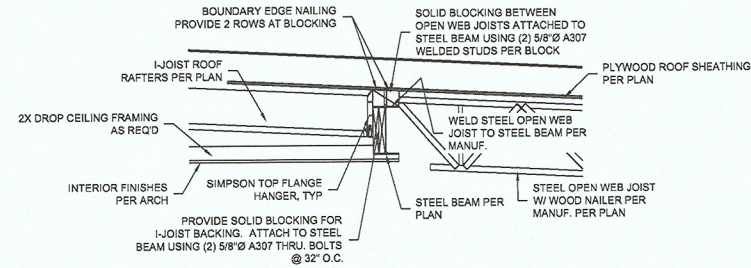
View: E:\Projects\2007\07\4458\07 DLR Group Bellview Elementary\Structural Drawings\4458-07 Structural Details\Elementary CD\4.dwg
 Date: 10/20/08 12:49pm Job: 4458

QA DRAWING SET

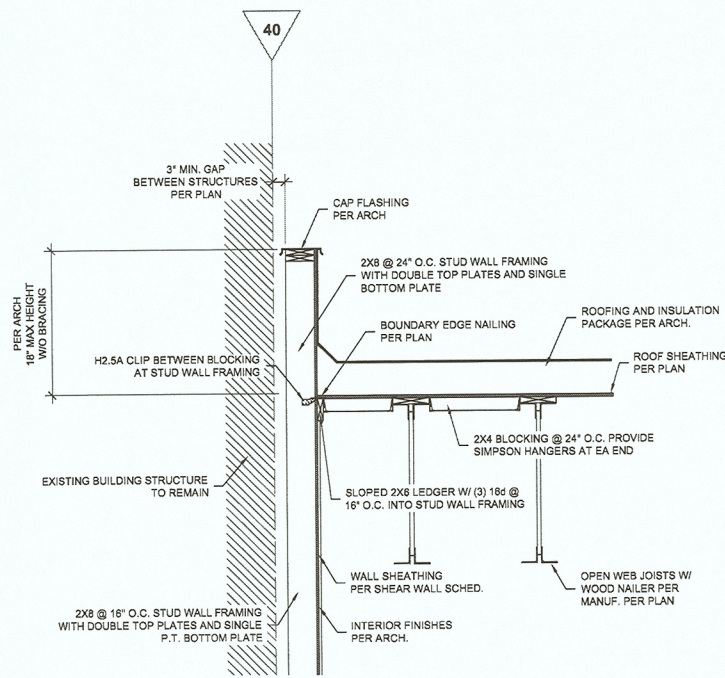
ROOF FRAMING DETAILS
BELLVIEW ELEMENTARY

S3.21
74-07105-30
03-10-08

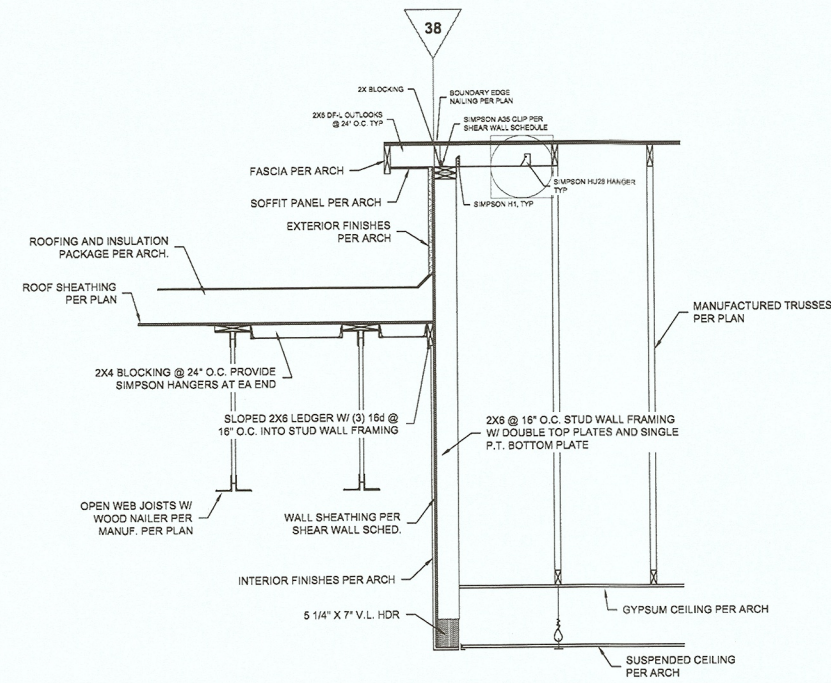
DLR Group
 Architecture Planning Interiors
©2007, DLR Group Architecture & Planning Inc., an Oregon corporation. ALL RIGHTS RESERVED.



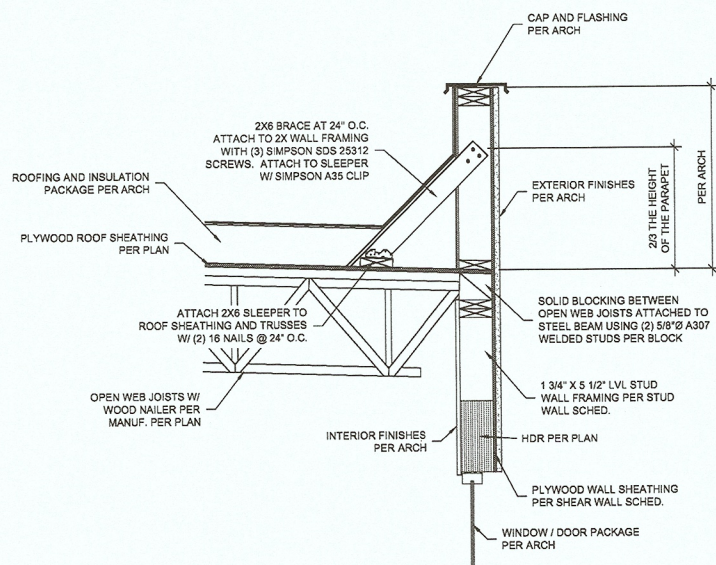
1 I-JOIST FRAMING TO STEEL OPEN WEB DETAIL
 S3.22 1/2" = 1'-0"



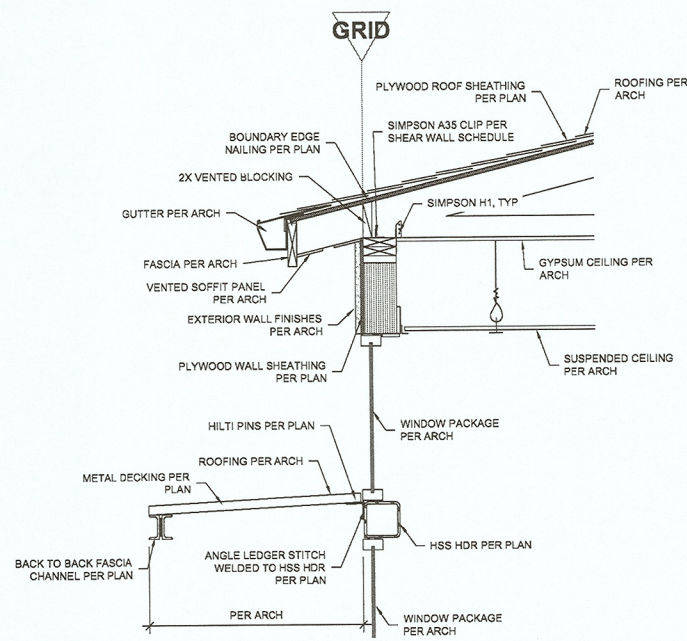
2 STEEL OPEN WEB TO WALL @ LOBBY C114 TO EXTG BUILDING
 S3.22 1/2" = 1'-0"



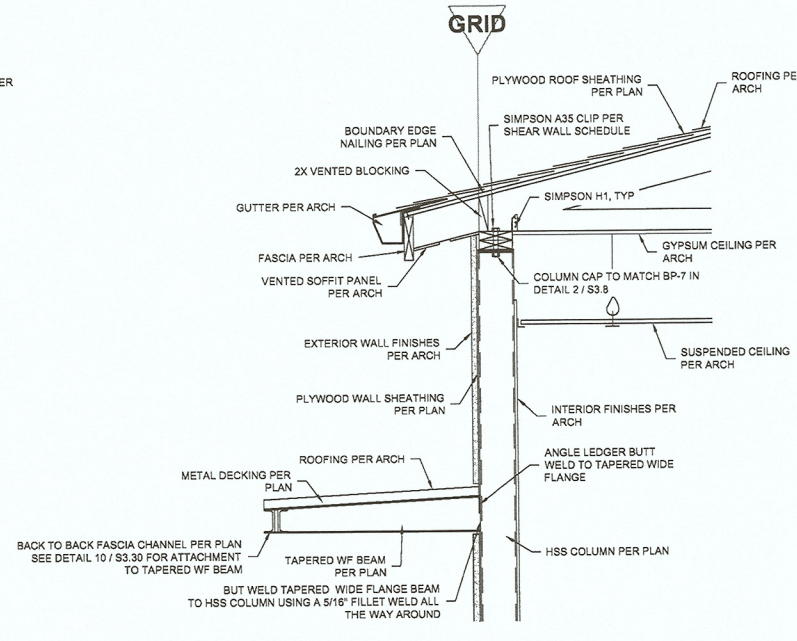
3 LOBBY C114 TRANSITION TO CORRIDOR C116
 S3.22 1/2" = 1'-0"



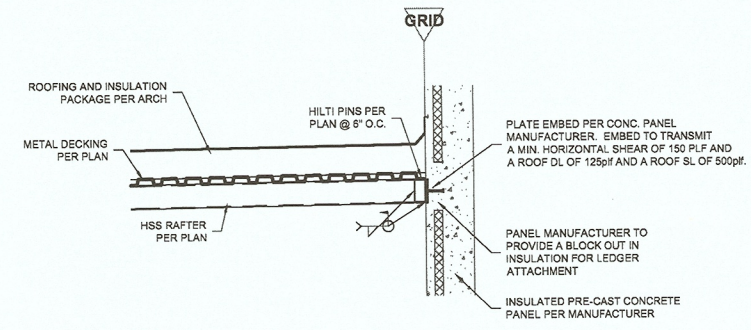
4 OPEN WEB STEEL JOISTS TO WALL DETAIL
 S3.22 3/4" = 1'-0"



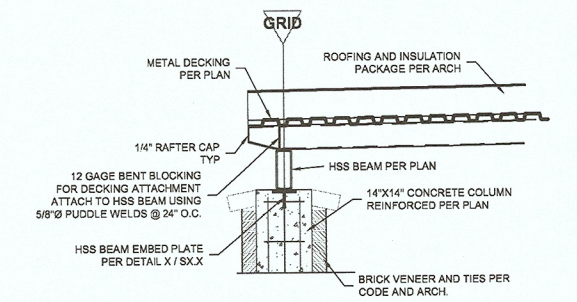
5 TYP SECTION @ CLASSROOM SUN SHADE
 S3.22 3/4" = 1'-0"



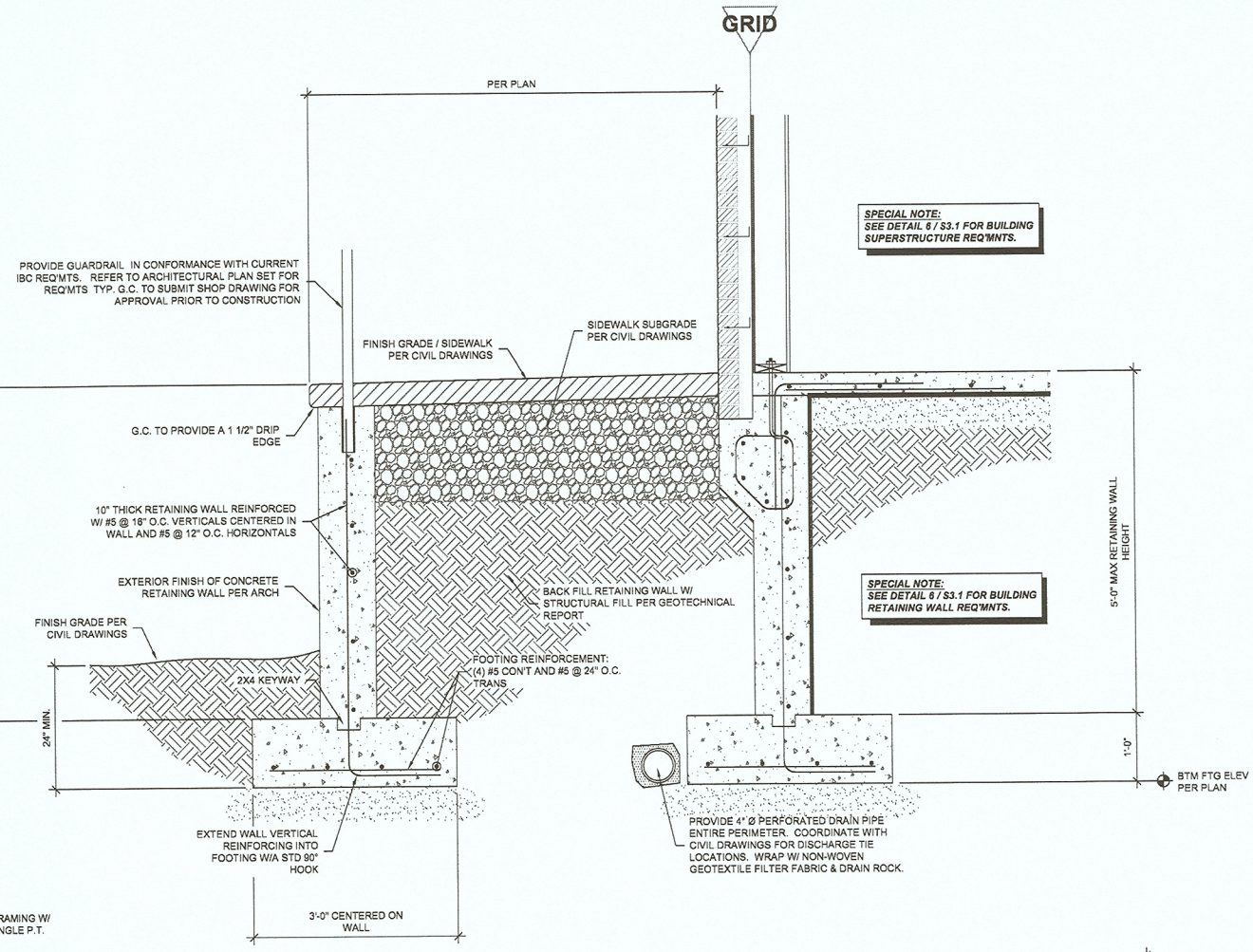
6 CLASSROOM SUN SHADE TAPERED WF BM TO COLUMN
 S3.22 3/4" = 1'-0"



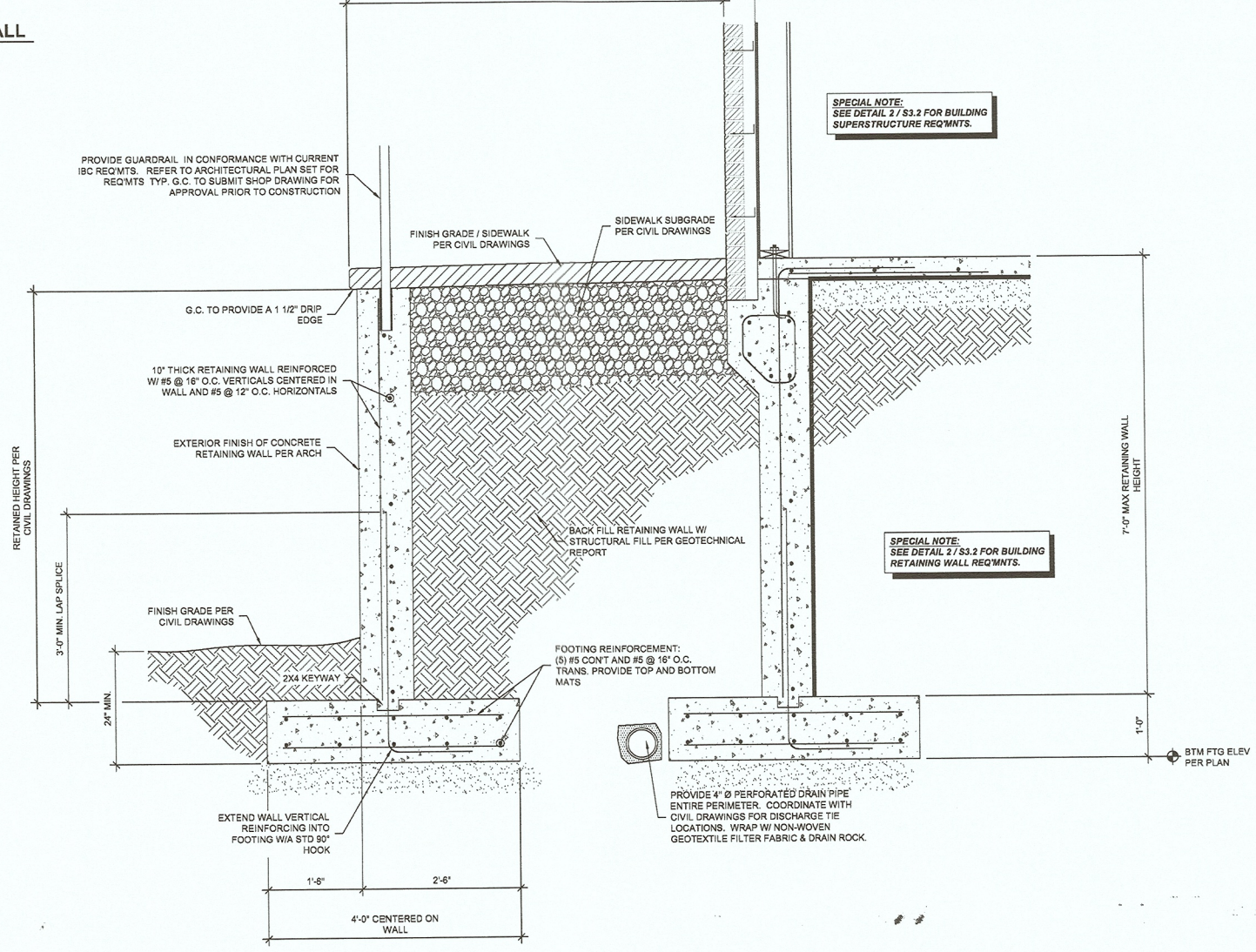
7 GYM FRONT ENTRY CANOPY TO PANEL DETAIL
 S3.22 1/2" = 1'-0"



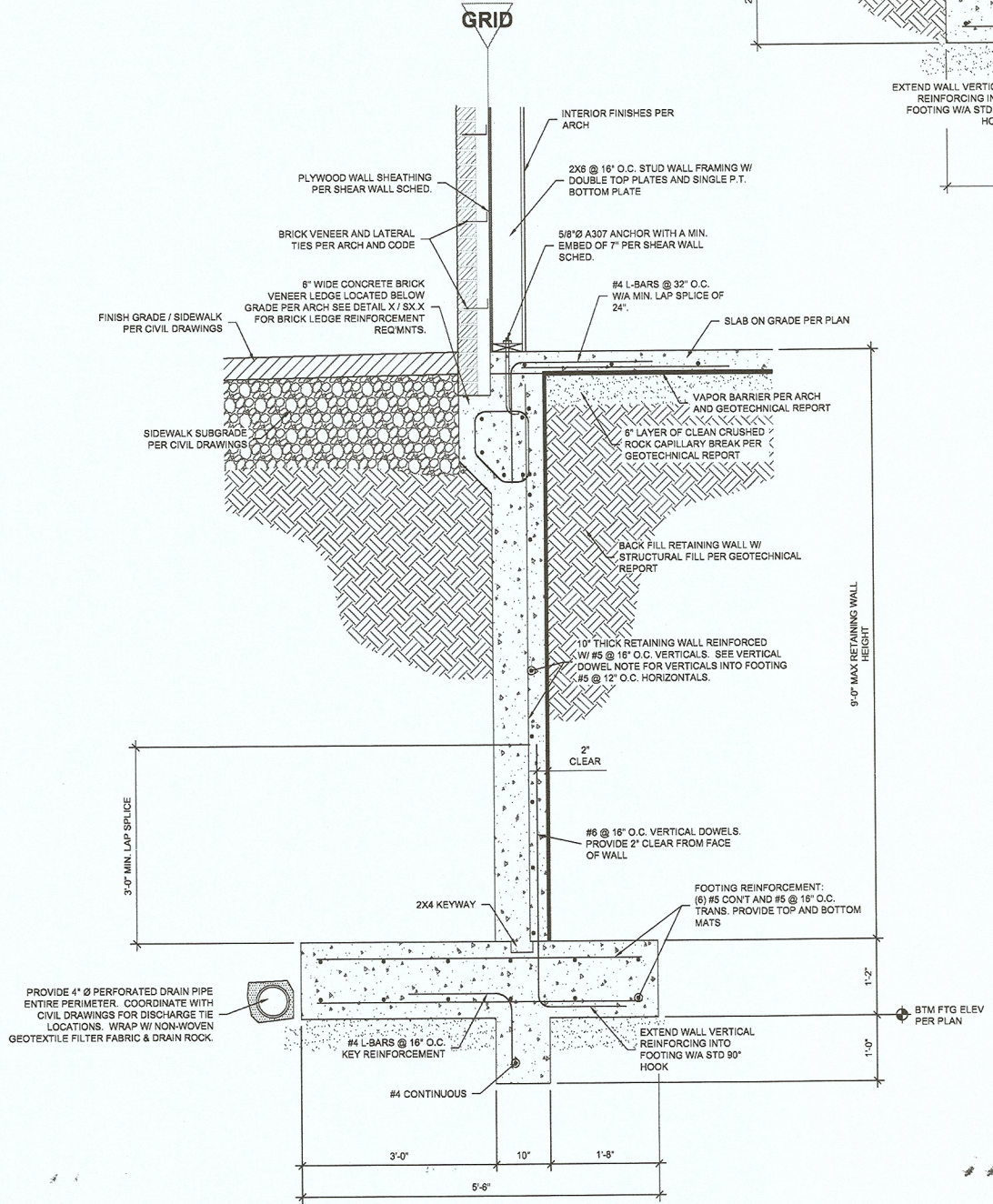
8 GYM FRONT ENTRY CANOPY TO COLUMN DETAIL
 S3.22 1/2" = 1'-0"



1
 S3.3
 3/4" = 1'-0"

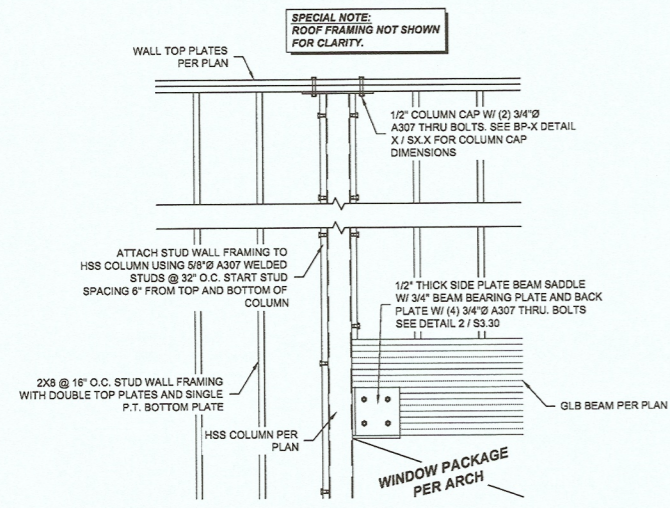


3
 S3.3
 3/4" = 1'-0"

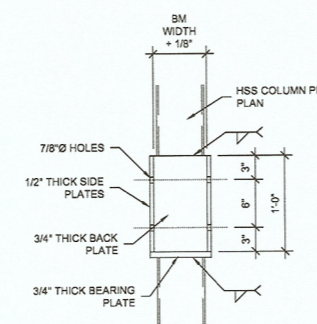


2
 S3.3
 3/4" = 1'-0"

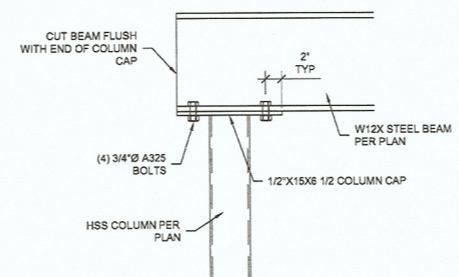
K:\New File Structure\KF Projects\2007\74-07105-30\74-07105-30-10-08\Structural\Drawings\Structural Drawings\4458-07_Structural Details_Curview_CD1.dwg
 Mar 10, 2008 12:51pm - jashhoda



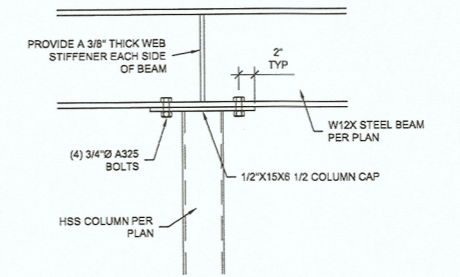
1
 S3.30
 CAFETERIA WINDOW HDR TO COLUMN DETAIL
 1/2" = 1'-0"



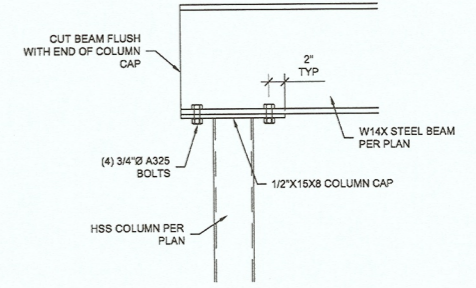
2
 S3.30
 CAFETERIA WINDOW HDR BEAM SADDLE
 1" = 1'-0"



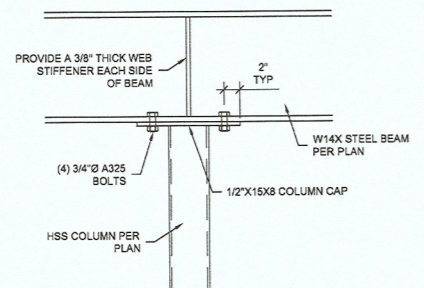
3
 S3.30
 W12X BEAM TO COLUMN [END DETAIL]
 1" = 1'-0"



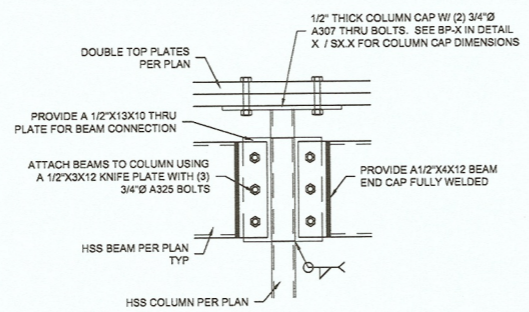
4
 S3.30
 W12X BEAM TO COLUMN [CON'T BEAM DETAIL]
 1" = 1'-0"



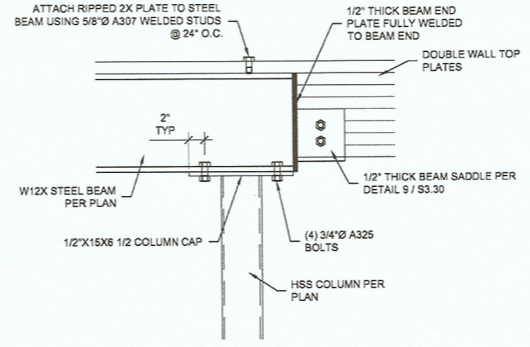
5
 S3.30
 W14X BEAM TO COLUMN [END DETAIL]
 1" = 1'-0"



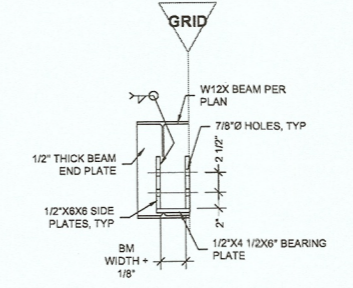
6
 S3.30
 W14X BEAM TO COLUMN [CON'T BEAM DETAIL]
 1" = 1'-0"



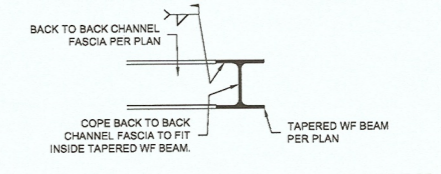
7
 S3.30
 STUDENT COMMONS CON'T HSS BEAM TO COLUMN
 1" = 1'-0"



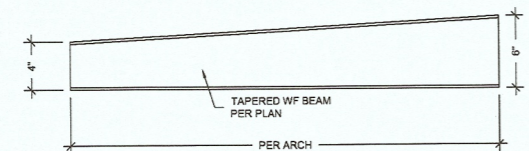
8
 S3.30
 W12X BEAM TO COLUMN W/ GLB
 1" = 1'-0"



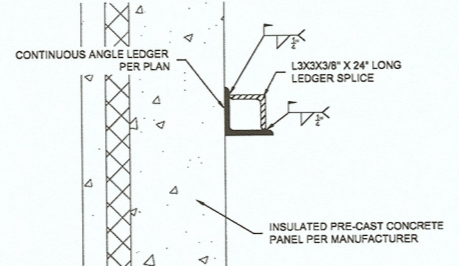
9
 S3.30
 GLB BEAM SADDLE W/ W12X BEAM
 1" = 1'-0"



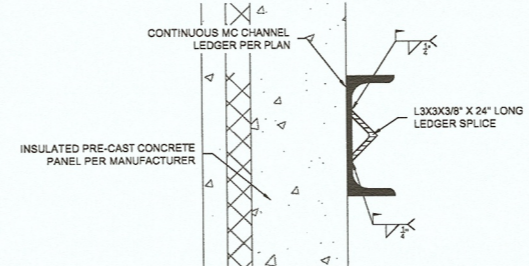
10
 S3.30
 SUN SHADE FASCIA TO TAPERED WF BM
 1 1/2" = 1'-0"



11
 S3.30
 SUN SHADE FASCIA TAPERED WF BM DIMENSIONS
 1 1/2" = 1'-0"



12
 S3.30
 ANGLE LEDGER SPLICE DETAIL
 1 1/2" = 1'-0"



13
 S3.30
 MC CHANNEL LEDGER SPLICE DETAIL
 1 1/2" = 1'-0"

K:\New File Structure\NF Projects\2007\K-4159-07 DLR Group Bellview Elementary\Structural\Drawings\Structural Details\Current CD\img Mar 10, 2008 12:51pm - Justin Mohr

