

Consulting Engineers
2007 S.E. Ash St.
Portland, OR 97214
PH: (503) 234-0548
FAX: (503) 234-0677
WWW.MCA-ENG.COM
CONTACT: ROB CONNELL

THE CONFEDERATED TRIBES OF GRAND RONDE
GRAND RONDE TRIBAL SCHOOL
9615 GRAND RONDE ROAD
GRAND RONDE, OR 97347

REV. #	DATE	DESCRIPTION

ELECTRICAL SYMBOLS

PROJECT NO: 20-112
DRWN BY: [CHKD BY:
DATE: 10-22-2021

ELECTRICAL SYMBOL LIST

LIGHTING SYMBOLS

- LIGHT FIXTURE, RECESSED
- LIGHT FIXTURE, RECESSED - EMERGENCY
- LIGHT FIXTURE, SURFACE MOUNT
- LIGHT FIXTURE, SURFACE MOUNT - EMERGENCY
- LIGHT FIXTURE, STRIP
- LIGHT FIXTURE, STRIP - EMERGENCY
- DOWNLIGHT FIXTURE, RECESSED
- DOWNLIGHT FIXTURE, RECESSED, WALLWASH
- DOWNLIGHT FIXTURE, RECESSED - EMERGENCY
- LIGHT FIXTURE, WALL MOUNT
- LIGHT FIXTURE, CEILING MOUNT
- RECESSED LIGHT FIXTURE, WALL MOUNT
- LIGHT FIXTURE, WALL MOUNT
- LIGHT FIXTURE, WALL SCONCE
- LIGHT FIXTURE, TRACK W/ HEADS AS SHOWN ON PLAN
- EXIT SIGN, UNIVERSAL MOUNT, W/ DIRECTIONAL ARROW
- EXIT SIGN, WALL MOUNT, +8"-0" A.F.F.
- EMERGENCY LIGHT W/ BATTERY PACK, +8"-0" A.F.F.
- FLOOD LIGHT
- AREA LUMINAIRE
- AREA LUMINAIRE W/STANDBY LAMP
- AREA LUMINAIRE, WALL MOUNT
- AREA LUMINAIRE, POLE MOUNT

SWITCH SYMBOLS

- SWITCH, SINGLE-POLE +48" A.F.F.
- SWITCH, DOUBLE-POLE +48" A.F.F.
- SWITCH, 3-WAY +48" A.F.F.
- SWITCH, 4-WAY +48" A.F.F.
- SWITCH, MOMENTARY +48" A.F.F.
- SWITCH, DIMMER +48" A.F.F.
- SWITCH, SPST, W/PILOT LIGHT +48" A.F.F.
- SWITCH, 3-WAY, W/PILOT LIGHT +48" A.F.F.
- SWITCH, KEY-OPERATED +48" A.F.F.
- SWITCH, TIMED +48" A.F.F.
- SWITCH, LOW-VOLTAGE/DIGITAL +48" A.F.F.
- SWITCH, OCCUPANCY SENSOR +48" A.F.F.
- PHOTOCELL CONTROL
- OCCUPANCY SENSOR - CEILING MTD

WIRING SYMBOLS

- PANEL & CIRCUIT NUMBER
- HOMERUN TO PANEL
- CONDUCTOR SIZE (IF OTHER THAN #12)
- PHASE CONDUCTOR
- NEUTRAL CONDUCTOR
- GROUND CONDUCTOR
- CONCEALED CONDUIT
- CONDUIT SIZE
- CONDUIT (UNDER SLAB OR FLOOR)
- FLEXIBLE CONNECTION
- CONDUIT, STUBBED & CAPPED

POWER SYMBOLS

- RECEPTACLE, SINGLE +18" A.F.F. (U.O.N)
- RECEPTACLE, DUPLEX +18" A.F.F.
- RECEPTACLE, QUAD +18" A.F.F.
- RECEPTACLE, DUPLEX +6" ABV COUNTER
- RECEPTACLE, DUPLEX +18" A.F.F. (ONE OUTLET SWITCHED)
- RECEPTACLE, DUPLEX +18" A.F.F. (BOTH OUTLETS SWITCHED)
- RECEPTACLE, DUPLEX, PEDESTAL MOUNT
- RECEPTACLE, DUPLEX, FLUSH FLOOR MOUNT
- RECEPTACLE, SPECIAL (COORDINATE WITH EQUIPMENT SERVED)
- PLUGMOLD RACEWAY
- LENGTH & OUTLET CENTERS AS INDICATED ON PLAN
- POWER POLE
- MAGNETIC MOTOR STARTER
- MAGNETIC CONTACTOR
- RELAY
- TIME CLOCK CONTROL
- PUSHBUTTON STATION
- JUNCTION BOX
- JUNCTION BOX, EMERGENCY CIRCUIT
- THERMOSTAT
- TRANSFORMER
- DISCONNECT, NON-FUSED
- DISCONNECT, FUSED
- ELECTRICAL CONNECTION
- ELECTRICAL CONNECTION, SINGLE MOTOR
- ELECTRICAL CONNECTION, MULTI-MOTOR
- EXISTING RECEPTACLE
- ELECTRICAL DISTRIBUTION PANEL, RECESSED
- ELECTRICAL DISTRIBUTION PANEL, SURFACE
- MISCELLANEOUS PANEL, RECESSED
- MISCELLANEOUS PANEL, SURFACE
- FLUSH FLOOR BOX (W/ DEVICES AS SHOWN ON PLAN)
- ELECTRIC BASEBOARD HEATER (WATTAGE NOTED)

SIGNAL SYMBOLS

- TELEPHONE OUTLET +18" A.F.F.
- DATA OUTLET +18" A.F.F.
- DATA/TELEPHONE OUTLET +18" A.F.F.
- TELEPHONE OUTLET, PEDESTAL MOUNT
- SIGNAL BELL
- SIGNAL BUZZER
- SIGNAL HORN
- VISUAL ALARM SIGNAL (COLOR AS INDICATED ON PLAN)
- P.A. SPEAKER
- P.A. CALL SWITCH
- CATV OUTLET (LOCATE AS SHOWN ON PLANS)
- CCTV CAMERA
- INTRUSION SENSOR

FIRE ALARM SYMBOLS

- FIRE ALARM MANUAL PULL STATION, +48" A.F.F.
- MAGNETIC DOOR HOLDER
- SMOKE DETECTOR, DUCT, IONIZATION TYPE W/SAMPLING TUBE
- SMOKE DETECTOR, DUCT, PHOTO TYPE W/SAMPLING TUBE
- SMOKE DETECTOR, IONIZATION TYPE
- SMOKE DETECTOR, PHOTO TYPE
- HEAT DETECTOR, RATE-OF-RISE OR FIXED TEMP.
- FIRE MAIN FLOW DETECTION SWITCH
- FIRE MAIN TAMPER DETECTION SWITCH
- FIRE ALARM BELL, +80" A.F.F., U.O.N.
- FIRE ALARM HORN, +80" A.F.F.
- FIRE ALARM HORN/STROBE, +80" TO 96" A.F.F.
- FIRE ALARM STROBE, +80" TO 96" A.F.F.
- FIRE ALARM INPUT MODULE
- FIRE ALARM OUTPUT MODULE
- FIRE ALARM CONTROL PANEL
- FIRE ALARM REMOTE ANNUNCIATOR
- FIRE ALARM STAND ALONE SMOKE DETECTOR
- CARBON MONOXIDE ALARM

ONE-LINE DIAGRAM SYMBOLS

- ELECTRICAL DISTRIBUTION PANELBOARD (MLO)
- ELECTRICAL DISTRIBUTION PANELBOARD (MCB)
- SUB-FEED CIRCUIT BREAKER
- CIRCUIT BREAKER (TRIP RATING & POLES AS INDICATED ON PLAN)
- MAIN SWITCH (RATING & POLES AS INDICATED ON PLAN)
- FUSE (RATING & CLASS AS INDICATED ON PLAN)
- TRANSFER SWITCH (MANUAL OR AUTOMATIC)
- GENERATOR (RATING AS INDICATED ON PLAN)
- TRANSFORMER (RATING AS INDICATED ON PLAN)
- FUSE (RATING & CLASS AS INDICATED ON PLAN)
- GROUND SYSTEM (SIZE AS INDICATED ON PLAN)
- WATER PIPE GROUND ELECTRODE
- SURGE PROTECTION DEVICE (SPD)
- UTILITY METER & METER BASE
- UTILITY METER CURRENT TRANSFORMER
- FEEDER NO. (SEE FEEDER SCHEDULE)
- MOTOR STARTER
- 'NEMA' SIZE (AS INDICATED ON PLAN)
- STARTER TYPE (AS INDICATED ON PLAN)
- MOTOR (HORSEPOWER AS INDICATED ON PLAN)
- VOLTMETER (SCALE AS INDICATED ON PLANS)
- AMMETER (SCALE AS INDICATED ON PLANS)
- WATTMETER (SCALE AS INDICATED ON PLANS)
- CURRENT TRANSFORMER (RATING AS INDICATED ON PLANS)
- POTENTIAL TRANSFORMER (RATING AS INDICATED ON PLANS)
- INSTRUMENT SWITCH (TYPE AS INDICATED ON PLANS)

ABBREVIATIONS

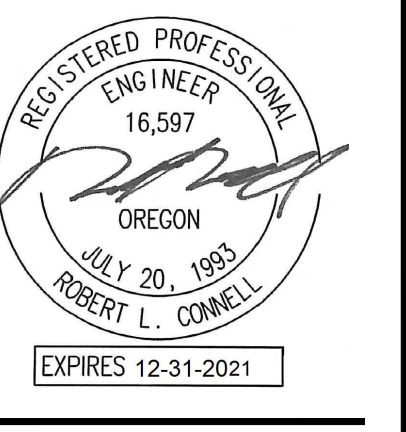
- 'A', 'AE' LIGHT FIXTURE TYPE (SEE FIXTURE LIST)
- A.F.F. ABOVE FINISHED FLOOR
- A.T.S. TRANSFER SWITCH, AUTOMATIC
- C CONDUIT
- C.O. CONDUIT ONLY
- CATV CABLE TELEVISION
- CB CIRCUIT BREAKER
- CCTV CLOSED CIRCUIT TELEVISION
- C.T. CURRENT TRANSFORMER
- (E) EXISTING
- E.L. EMERGENCY LIGHT
- E.L.C. EXTERIOR LIGHTING CONTROL
- FACP FIRE ALARM CONTROL PANEL
- G.F.I. GROUND FAULT INTERRUPTER
- GND GROUND
- H.I.D. HIGH INTENSITY DISCHARGE
- HP HORSEPOWER
- HTR HEATER
- I.G. ISOLATED GROUND
- I R INFRARED
- JB JUNCTION BOX
- MCB MAIN CIRCUIT BREAKER
- MCC MOTOR CONTROL CENTER
- MLO MAIN LUGS ONLY
- M.T.S. TRANSFER SWITCH, MANUAL
- (N) NEW
- N.I.C. NOT IN CONTRACT
- N.L. NIGHT LIGHT
- OL OVERLOAD
- O.L.C. OFFICE LIGHTING CONTROL
- P POLE
- P.A. PUBLIC ADDRESS
- PH PHASE
- PRI PRIMARY
- RTU REMOTE TELEMETRY UNIT
- SEC SECONDARY
- T.R. TAMPER RESISTANT
- U.G. UNDERGROUND
- U.O.N. UNLESS OTHERWISE NOTED
- VFD VARIABLE FREQUENCY DRIVE
- W WIRE
- W.G. WIRE GUARD
- W.P. WEATHER-PROOF
- W.R. WEATHER RESISTANT
- W.T. WATERTIGHT
- X.P. EXPLOSION PROOF

NOTATIONS

- DETAIL REFERENCE: TOP=DETAIL NO., BOTTOM=SHEET NO.
- MECHANICAL EQUIPMENT MARK NO. (SEE EQUIPMENT SCHEDULE)
- EQUIPMENT NO. (SEE EQUIPMENT SCHEDULE)
- EQUIPMENT NO. (SEE EQUIPMENT SCHEDULE)
- FEEDER NO. (SEE FEEDER SCHEDULE)
- FIXTURE REFERENCE: TOP=TYPE, BOTTOM=LAMP QTY & WATTS

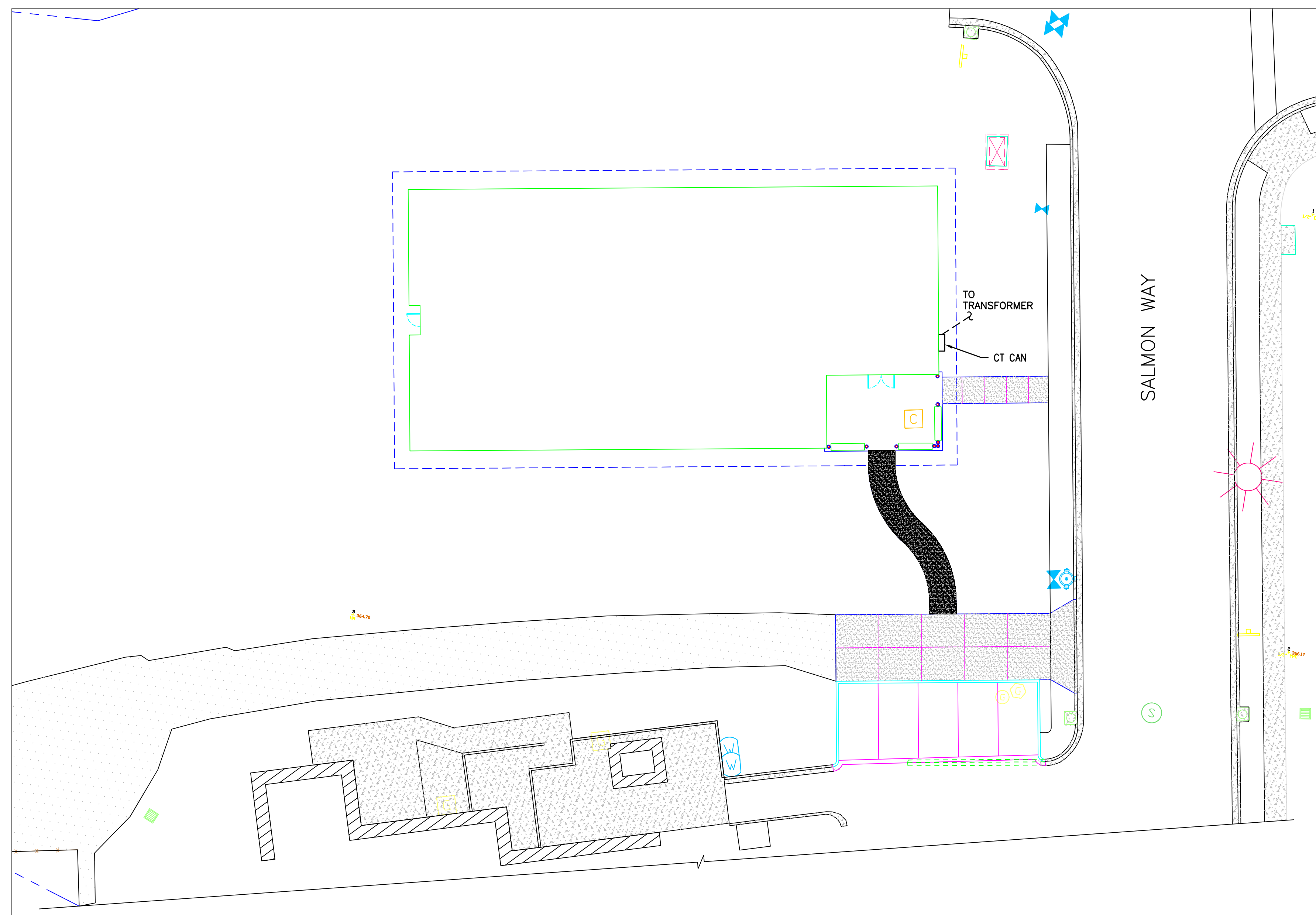
NOTES:

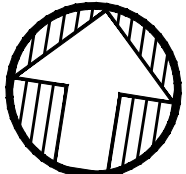
- SOME OF THE SYMBOLS AND ABBREVIATIONS ON THIS LIST MAY NOT APPLY TO THIS PROJECT.
- MOUNTING HEIGHTS INDICATED ARE TO THE CENTER OF THE DEVICE UNLESS OTHERWISE NOTED.
- MOUNTING HEIGHTS INDICATED SHALL BE USED UNLESS OTHERWISE NOTED ON THE PLANS.



MCA Consulting Engineers
2007 S.E. Ash St.
Portland, OR 97214
PH: (503) 234-0548
FAX: (503) 234-0677
INC. WWW.MCA-ENG.COM
CONTACT: ROB CONNELL

THE CONFEDERATED TRIBES OF GRAND RONDE
GRAND RONDE TRIBAL SCHOOL
9615 GRAND RONDE ROAD
GRAND RONDE, OR 97347

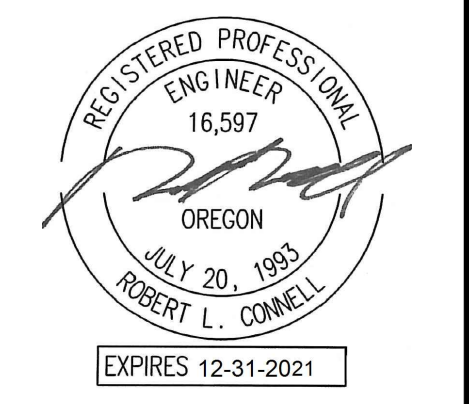


 **1** SITE PLAN - ELECTRICAL
E101 SCALE: 1/16" = 1' 00"

REV. #	DATE	DESCRIPTION

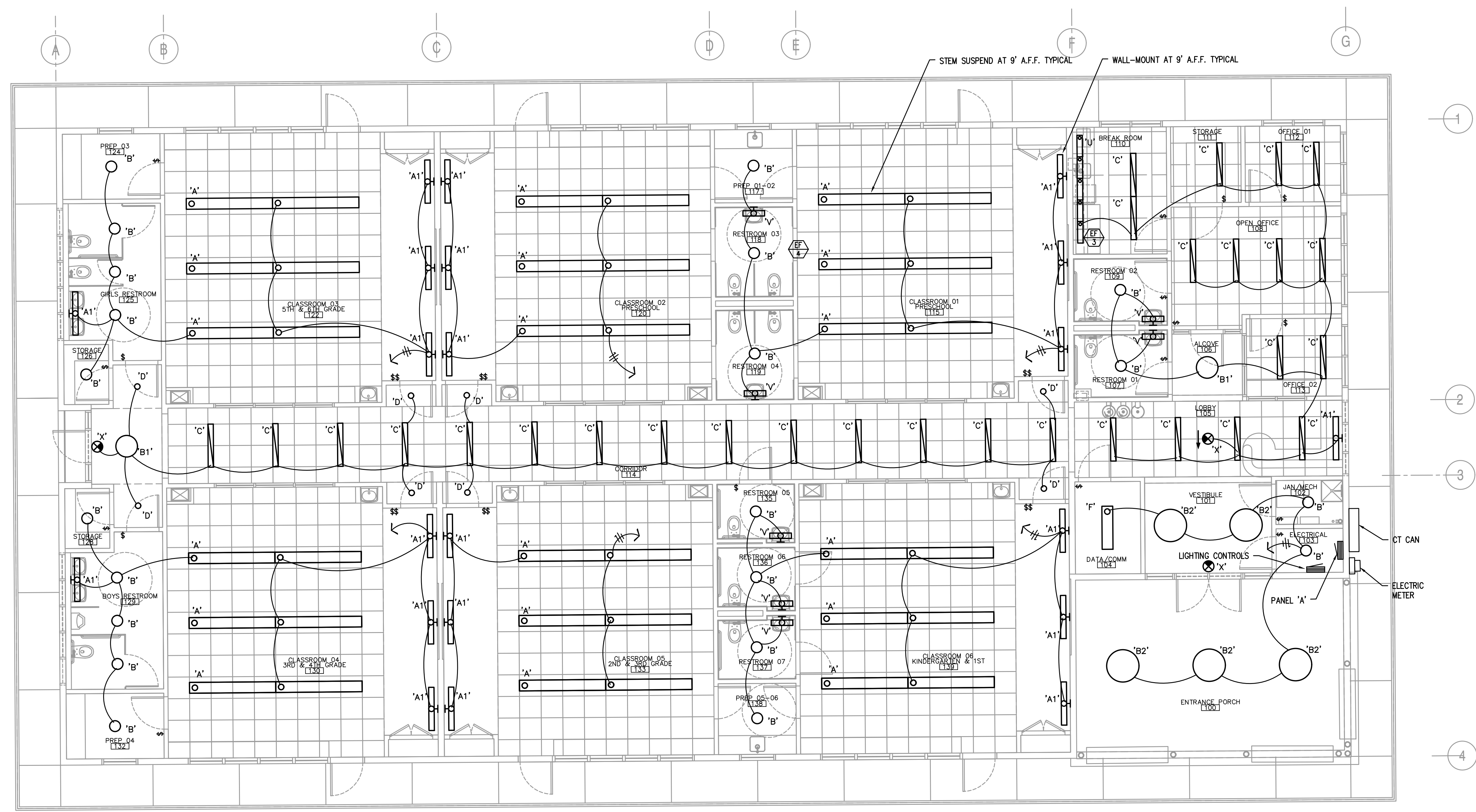
SITE PLAN - ELECTRICAL	

PROJECT NO: 20-112
DRWN BY: [] CHKD BY: []
DATE: 10-22-2021



MCA Consulting Engineers
2007 S.E. Ash St.
Portland, OR 97214
PH: (503) 234-0548
FAX: (503) 234-0677
WWW.MCA-ENG.COM
CONTACT: ROB CONNELL

THE CONFEDERATED TRIBES OF GRAND RONDE
GRAND RONDE TRIBAL SCHOOL
9615 GRAND RONDE ROAD
GRAND RONDE, OR 97347



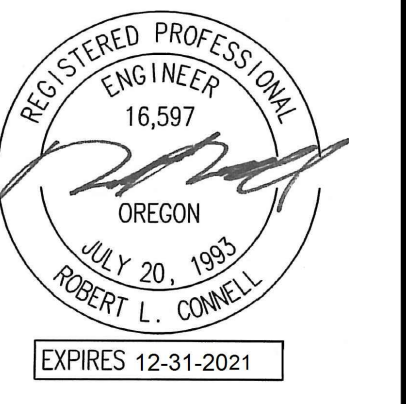
1 FLOOR PLAN - LIGHTING
E201 SCALE: 3/16" = 1' 00"

REV. #.	DATE	DESCRIPTION

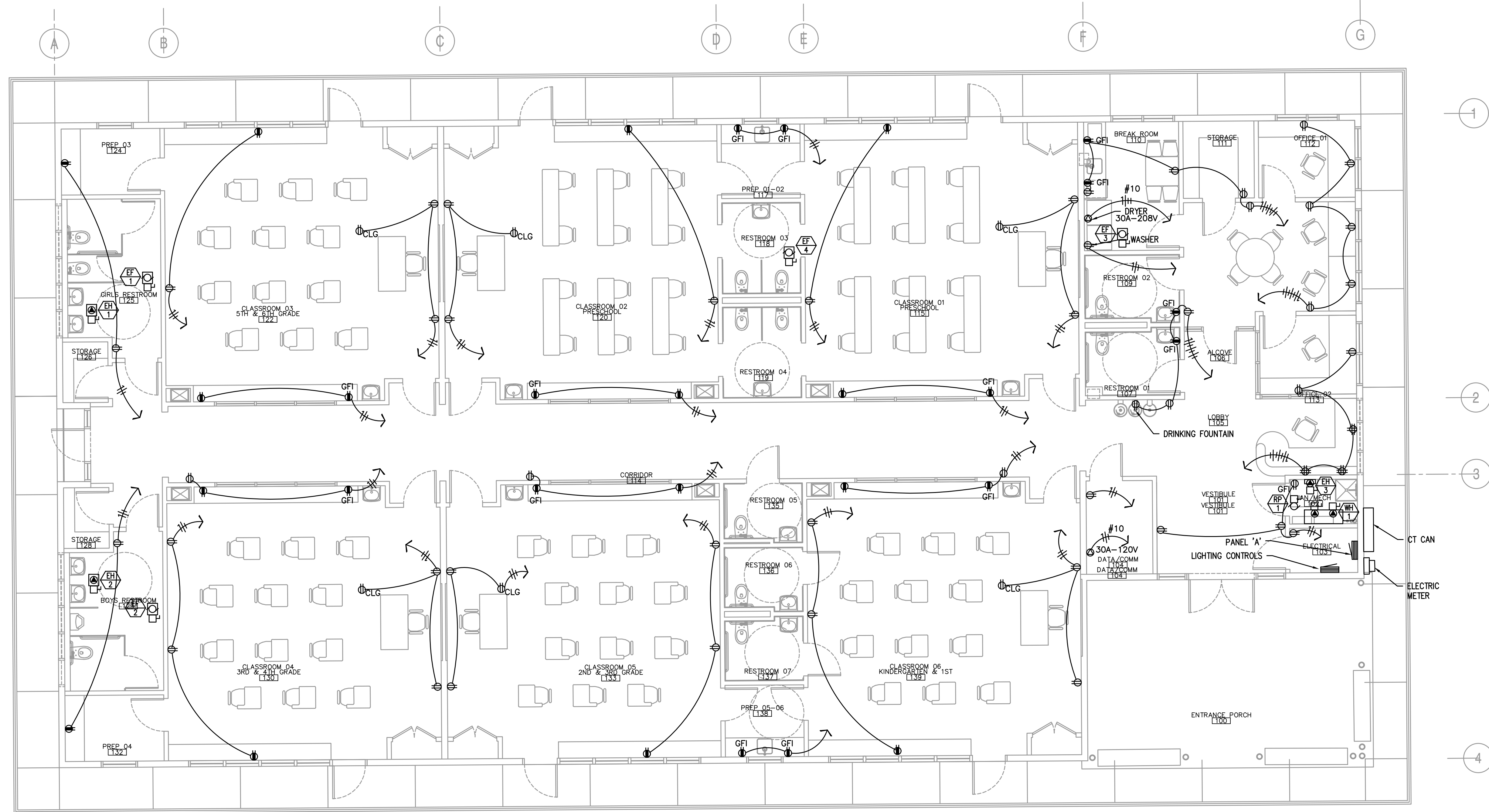
FLOOR PLAN - LIGHTING

PROJECT NO: 20-112
DRWN BY: [] CHKD BY: []
DATE: 10-22-2021

E-201



THE CONFEDERATED TRIBES OF GRAND RONDE
GRAND RONDE TRIBAL SCHOOL
9615 GRAND RONDE ROAD
GRAND RONDE, OR 97347



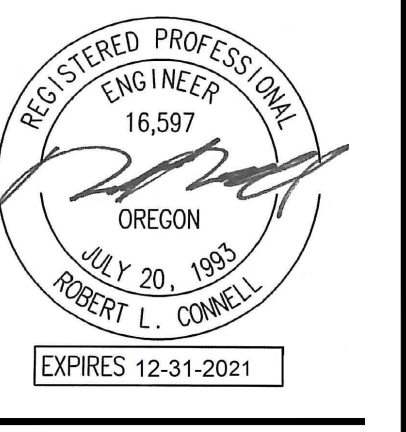
1 FLOOR PLAN - POWER
E301 SCALE: 3/16" = 1' 00"

REV. #.	DATE	DESCRIPTION

FLOOR PLAN - POWER

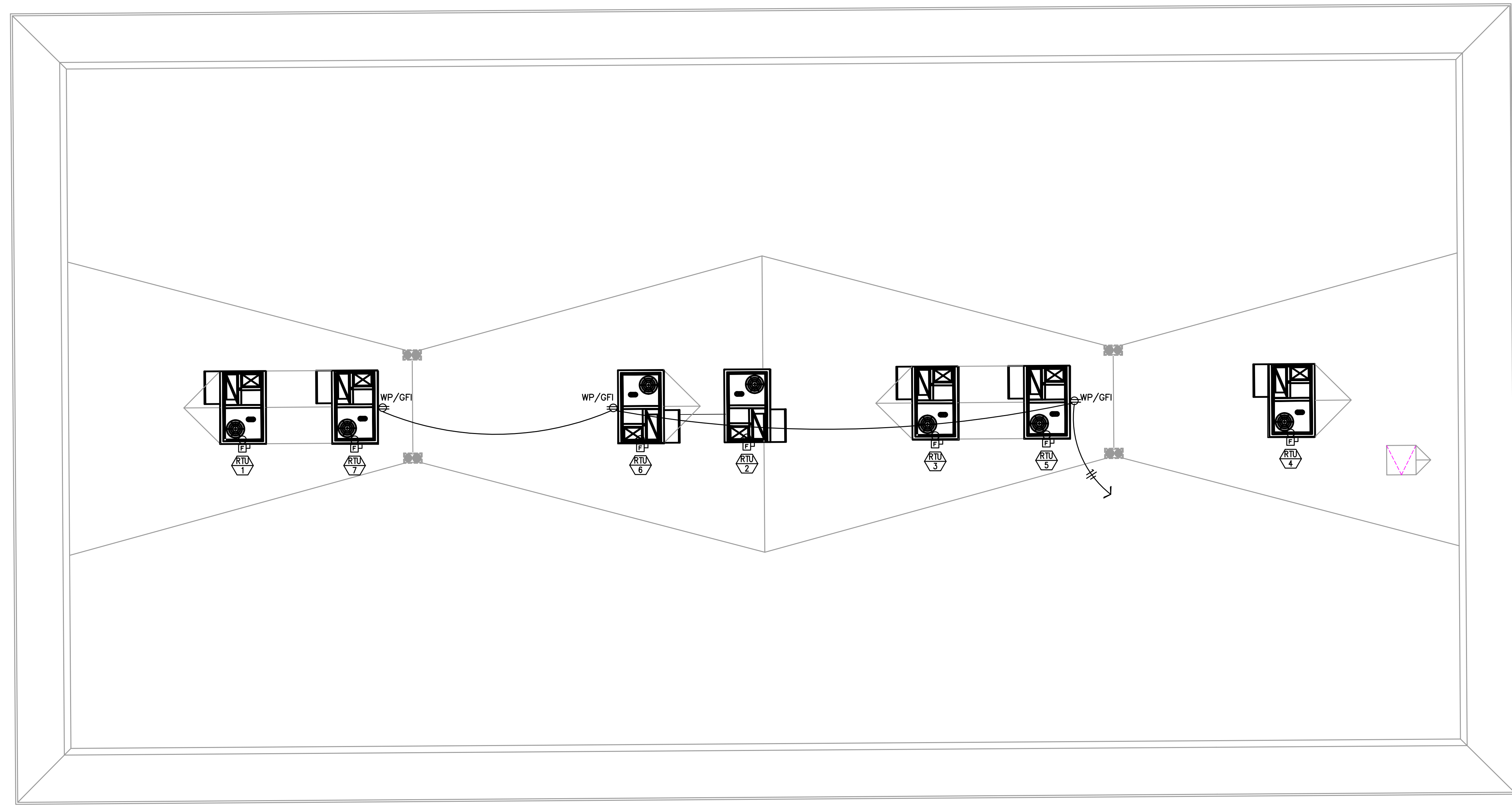
PROJECT NO: 20-112
DRWN BY: [] CHKD BY: []
DATE: 10-22-2021

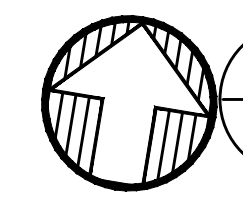
E-301



MCA Consulting Engineers
2007 S.E. Ash St.
Portland, OR 97214
PHN: (503) 234-0548
FAX: (503) 234-0677
INC. WWW.MCA-ENG.COM
CONTACT: ROB CONNELL

THE CONFEDERATED TRIBES OF GRAND RONDE
GRAND RONDE TRIBAL SCHOOL
9615 GRAND RONDE ROAD
GRAND RONDE, OR 97347

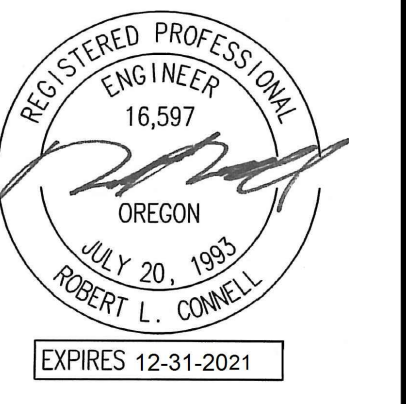


 1 ROOF PLAN - POWER
E-302 SCALE: 3/16" = 1'-00"

REV. #	DATE	DESCRIPTION

PROJECT NO.	20-112
DRWN BY:	CHKD BY:
DATE: 10-22-2021	

E-302



MCA Consulting Engineers
2007 S.E. Ash St.
Portland, OR 97214
PH: (503) 234-0548
FAX: (503) 234-0677
INC. WWW.MCA-ENG.COM
CONTACT: ROB CONNELL

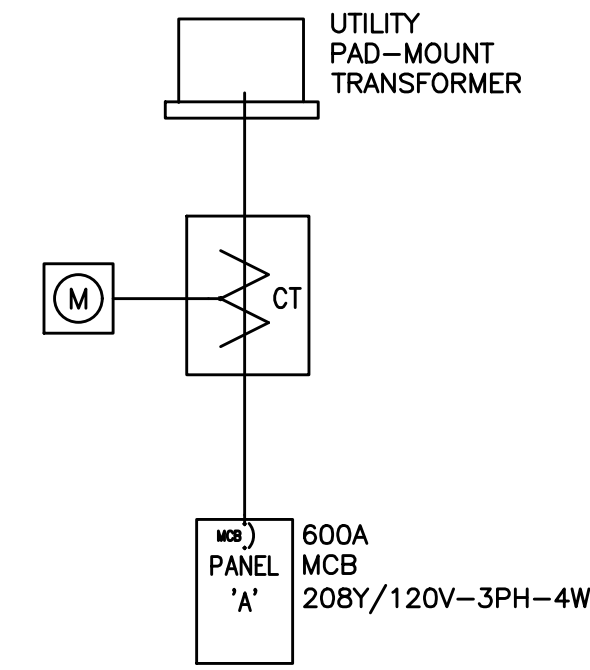
THE CONFEDERATED TRIBES OF GRAND RONDE
GRAND RONDE TRIBAL SCHOOL
9615 GRAND RONDE ROAD
GRAND RONDE, OR 97347

REV. #	DATE	DESCRIPTION

ONE-LINE DIAGRAM

PROJECT NO: 20-112
DRWN BY: [] CHKD BY: []
DATE: 10-22-2021

E-501



1 ONE-LINE DIAGRAM
E-501 208Y/120V-3PH-4W