

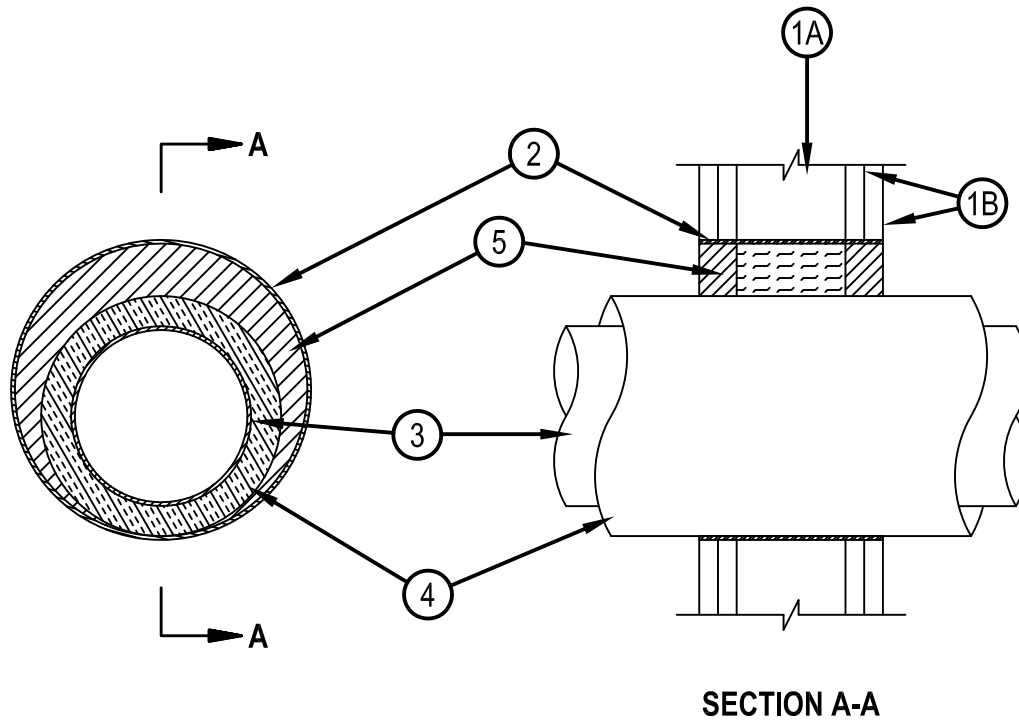


Classified by  
Underwriters Laboratories, Inc.  
to UL 1479 and CAN/ULC-S115

## System No. W-L-7018

ANSI/UL1479 (ASTM E814)	CAN/ULC S115
F Rating — 2 Hr	F Rating — 2 Hr
T Rating — 1/2 Hr	FT Rating — 1-1/2 Hr
	FH Rating — 2 Hr
	FTH Rating — 1-1/2 Hr

WL 7018



1. Wall Assembly — The 2 hr fire-rated gypsum wallboard/stud wall assembly shall be constructed of the materials and in the manner specified in the individual U300, U400, V400 or W400 Series Wall and Partition Designs in the UL Fire Resistance Directory and shall include the following construction features:

A. Studs — Wall framing may consist of either wood studs or steel channel studs. Wood studs to consist of nom 2 by 4 in. (51 by 102 mm) lumber spaced 16 in. (406 mm) OC. Steel studs to be min 2-1/2 in. (64 mm) wide and spaced max 24 in. (610 mm) OC.

B. Gypsum Board\* — Two layers of nom 5/8 in. (16 mm) thick gypsum wallboard as specified in the individual Wall and Partition Design No. Max diam of opening is 9 in. (229 mm).

2. Metallic Sleeve — Cylindrical sleeve fabricated from min 0.016 in. (0.40 mm) thick (No. 28 gauge) galv steel sheet steel and having a min 2 in. (51 mm) lap along the longitudinal seam. Length of sleeve to be 1/8 in. (3 mm) less than thickness of wall. Sleeve to be installed by coiling the sheet metal to a diam smaller than the through opening, inserting the coil through the openings and releasing the coil to let it uncoil against the circular cutouts in the gypsum wallboard layers.



**Hilti Firestop Systems**

Reproduced by HILTI, Inc. Courtesy of  
Underwriters Laboratories, Inc.  
January 27, 2015

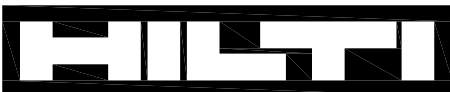
## System No. W-L-7018

WL 7018

3. Steel Duct — Nom 6 in. (152 mm) diam (or smaller) No. 28 gauge (or heavier) galv steel duct to be installed concentrically within the firestop system. Duct to be rigidly supported on both sides of the wall assembly.
4. Pipe Covering\* — Nom 1 in. (25 mm) thick hollow cylindrical heavy density (3.5 pcf or 56 kg/m<sup>3</sup>) glass fiber units jacketed on the outside with an all service jacket. Longitudinal joints sealed with metal fasteners or factory-applied self-sealing lap tape. Transverse joints secured with metal fasteners or with butt tape supplied with the product. The annular space between the insulated pipe and the steel sleeve shall be min 0 in. (point contact) to max 1 in. (25 mm).  
See Pipe Equipment Covering — Materials — (BRGU) Category in the Building Materials Directory for names of manufacturers. Any pipe covering material meeting the above specifications and bearing the UL Classification Marking with a Flame Spread Index of 25 or less and a Smoke Developed Index of 50 or less may be used.
5. Fill, Void or Cavity Material\* — Sealant — Min 1-1/4 in. (32 mm) depth of sealant applied within the annulus, flush with each surface of the wall assembly. At the point contact location between insulated pipe and wall, a min 1/2 in. (13 mm) diam bead of sealant shall be applied on both surfaces of wall, lapping 1/4 in. (6 mm) beyond the periphery of the opening.

HILTI CONSTRUCTION CHEMICALS, DIV OF HILTI INC — FS-ONE Sealant or FS-ONE MAX Intumescent Sealant

\* Indicates such products shall bear the UL or cUL Certification Mark for jurisdictions employing the UL or cUL Certification (such as Canada), respectively.



**Hilti Firestop Systems**

Reproduced by HILTI, Inc. Courtesy of  
Underwriters Laboratories, Inc.  
January 27, 2015