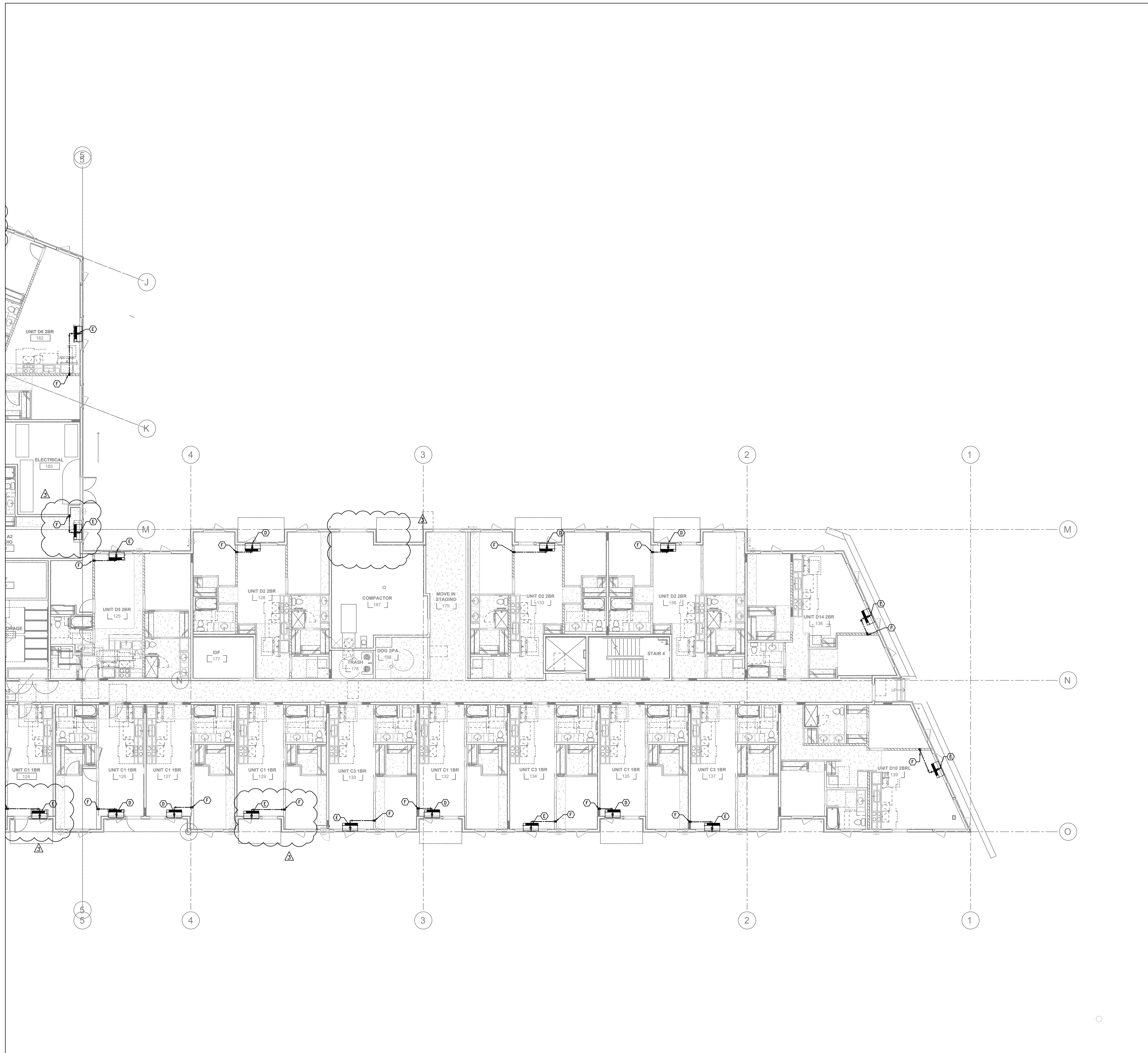


Copyright protected. See Design Agreement. For use on this project only. Unauthorized reproduction of any part of this material is prohibited.



**GENERAL NOTES:**

- (A) — 3/4" CONDENSATE DRAIN FROM PTHP ROUTED DOWN THRU FLOOR ASSEMBLY
- (B) — 1" CONDENSATE DRAIN RISER DOWN IN INTERIOR WALL TO FIRST FLOOR CEILING SPACE SEE NOTE I.
- (C) — 3/4" CONDENSATE FROM FAN COIL ROUTED THROUGH JOISTS TO CD RISER IN INTERIOR
- (D) — GROUND FLOOR PTHPS ON PATIOS: -ROUTE CONDENSATE DRAIN OUT BELOW THE PTHP, ELBOW DOWN AND DAYLIGHT TO DRY WELL/OPENING IN PATIO
- (E) — GROUND FLOOR PTHPS WITHOUT PATIOS: - CONDENSATE TO DRAIN OUT FACE OF PTHP TO LANDSCAPING.
- (F) — ROUTE CONDENSATE RISER HORIZONTALLY IN 1ST FLOOR CEILING SPACE TO EXTERIOR WALL, ROUTE DOWN IN WALL AND OUT TO LANDSCAPING WITH ELBOW DOWN -- CONTRACTOR TO FIELD VERIFY EXACT ROUTING.



ARCHITECTURE  
URBAN DESIGN + PLANNING  
INTERIOR DESIGN

PORTLAND/OAKLAND  
SERADESIGN.COM

7-22-22



Consulting Engineers  
2007 S.E. Ash St.  
Portland, OR 97214  
PHN: (503) 234-0548  
FAX: (503) 234-0577  
WWW.MFI-INC.COM  
CONTACT: MARK DENYER



**MODERA BEAVERTON**

1200 S.W. BEAVERDALE WAY, ST.  
BEAVERTON, OR 97005

REVISIONS

1	AB 01	22 AUG 2022
2	AB 02	19 SEP 2022
3	AB 03	4 NOV 2022

CHECKED BY: <checker>  
ISSUE DATE: 25 JULY 2022  
PROJECT NO: 2103053

CONDENSATE FLOOR PLAN - LEVEL 01C

**M301C**

PERMIT SET

**1** CONDENSATE FLOOR PLAN - LEVEL 01C  
M301C SCALE: 1/8" = 1'-0"