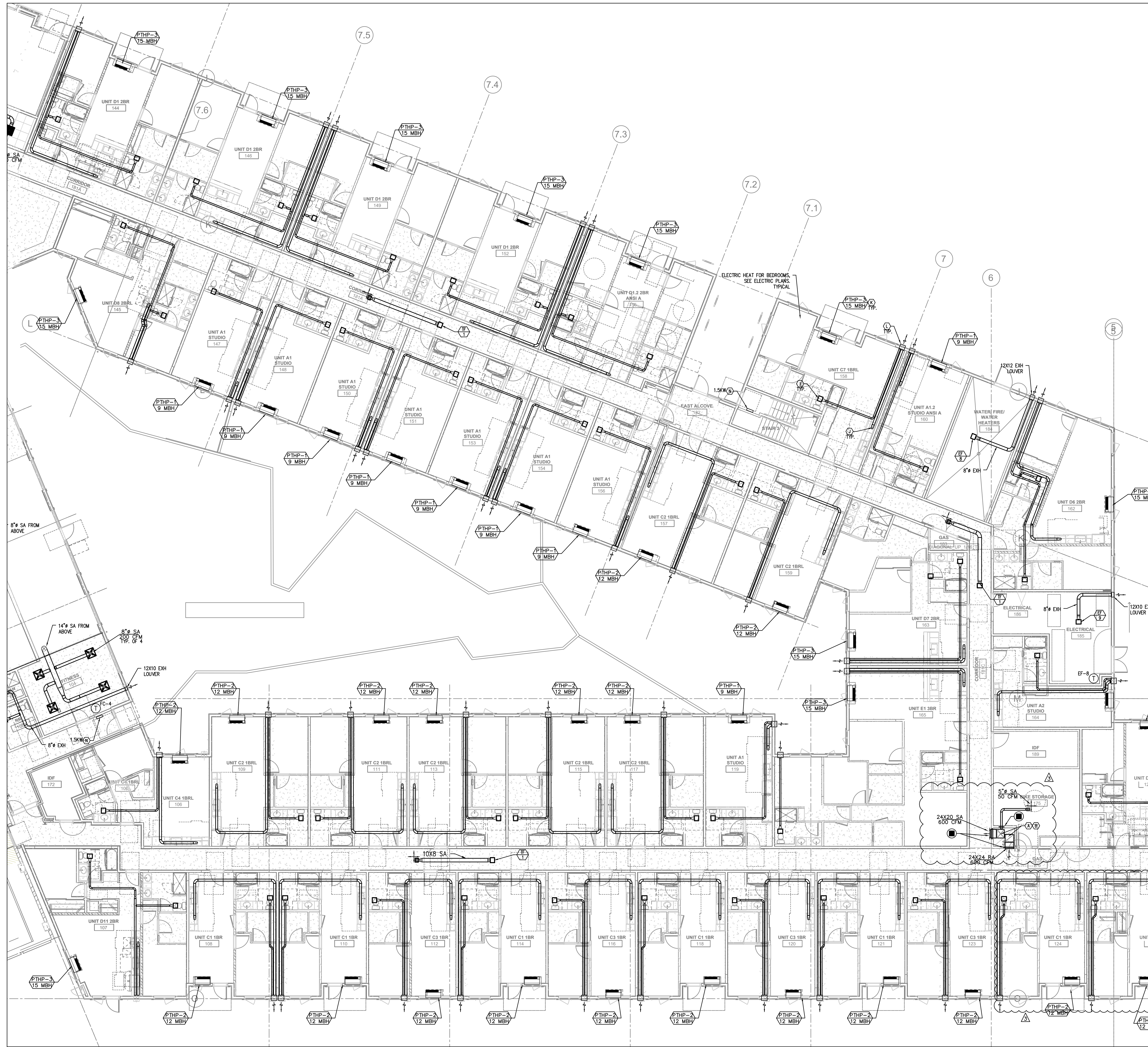


Copyright protected. See Design Agreement. For use on this project only. Unauthorized reproduction of any part of this material is prohibited.



GENERAL NOTES:

- (A) SUPPLY DUCT FROM ROOF TO 1ST FLOOR CEILING - TRANSITION TO SMALLER DUCT SIZES AFTER SUPPLY BRANCH TAKE OFF. SEE CHART.
- (B) SUPPLY AIR OR RETURN GRILLE, SIZED FOR BOTH FREE AREA AND FOR ACTUATOR ACCESS. SEE FOR GRILLE INSTALLATION, AND SEE (1) FOR TYPICAL F/S INSTALLATION, (2) AND CONTROLS.
- (C) STOREFRONT LOUVERS FOR FUTURE TI SPACES, LOUVERS TO BE CAPPED AT INTERIOR FOR FUTURE CONNECTIONS - COORDINATE WITH SOFFIT/STORE FRONT SYSTEM.
- (D) REFRIGERANT LINES ROUTED FROM ROOFTOP CONDENSING UNITS TO FC'S. FOR ROOFTOP REFRIGERANT PENETRATIONS, SEE (7)
- (E) REFRIGERANT LINES CAPPED AND SEALED FOR FUTURE TI CONNECTION. ROUTED FROM 1ST FLOOR CEILING SPACE TO WALL BRACKET FOR FUTURE CONDENSING UNIT.
- (F) X" (SEE PLANS) OUTSIDE AIR TO FAN COIL. PROVIDE WITH 2-POSITION DAMPER TO OPEN WHENEVER FAN COIL OPERATES. DAMPER TO BE A LOW LEAK CLASS 1 DAMPER.
- (G) 20X20 GREASE EXHAUST (WITH FIRE WRAP IN 30X30 SHAFT) ROUTED FROM ROOF (CAPPED) TO TI SPACE (CAPPED FOR FUTURE TI). PROVIDE VENTED CURB ADAPTER AND CAP FOR FUTURE GREASE EXHAUST FAN.
- (H) 5 KW UNIT HEATER, QMARK MH05-XX OR EQUAL. EQUIPMENT BY ELECTRICAL CONTRACTOR. SHOWN FOR REFERENCE ONLY.
- (I) PANASONIC WHISPERGREEN CEILING FAN WITH 4" DUCT TO ROOF OR EXTERIOR WALL TERMINATION VIA SOFFIT(S) PROVIDED. BACK DRAFT DAMPER INTEGRAL TO FAN. FAN TO OPERATE AT LOW SPEED CONTINUOUS (30CFM) AND INCREASE TO 80CFM WHEN BUILT-IN MOTION SENSOR IS ACTIVATED. INSULATE FINAL 5' OF DUCTWORK. NO DUCTWORK SHALL PENETRATE RATED ASSEMBLY. SEE (1) (EF) (T)
- (J) 6" RANGE HOOD EXHAUST ROUTED FROM RANGE TO EXTERIOR WALL, KEEP DUCT AS HIGH IN SPACE AS POSSIBLE, AND TERMINATE WITH A SIDE WALL VENT, WITH A BACKDRAFT DAMPER. INSULATE FINAL 5' OF DUCTWORK.
- (K) PTHP DETAIL, SEE (2) (M600)
- (L) EXTERIOR EXHAUST PLENUM, SEE (8) (M600)
- (M) 1.5 KW WALL HEATER QMARK ANH440F OR EQUAL. EQUIPMENT BY ELECTRICAL CONTRACTOR. SHOWN FOR REFERENCE ONLY.
- (N) DUCTED FAN COIL DETAIL, SEE (5) (M600)

SHAFT DUCT SIZES

FLOOR	SUPPLY AIR	CFM	RETURN AIR	CFM	UNIT
ATTIC	26 X 26	4000	26 X 26	4000	RTU-1
5TH	28 X 24	4000	28 X 24	4000	RTU-1
4TH	24 X 22	3360	24 X 22	3360	RTU-1
3RD	24 X 22	2720	24 X 22	2720	RTU-1
2ND	24 X 20	2080	24 X 20	2080	RTU-1
1ST	24 X 20	1440	24 X 20	1440	RTU-1

SHAFT DUCT SIZES

FLOOR	SUPPLY AIR	CFM	RETURN AIR	CFM	UNIT
ATTIC	24 X 24	3000	24 X 24	3000	RTU-2
5TH	24 X 24	3000	24 X 24	3000	RTU-2
4TH	24 X 22	2400	24 X 22	2400	RTU-2
3RD	24 X 22	1800	24 X 22	1800	RTU-2
2ND	24 X 20	1200	24 X 20	1200	RTU-2
1ST	24 X 20	600	24 X 20	600	RTU-2

VENTILATION CALCULATIONS:

ALL DWELLING UNITS ARE VENTILATED BY MECHANICAL VENTILATION, BATHROOM EXHAUST FANS RUN CONTINUOUSLY (SIZED PER ASHRAE 62.2) AND MAKE UP AIR IS PROVIDED BY NATURAL VENTILATION.

COMMON SPACES AND HALLWAYS ARE VENTILATED BY PACKAGED ROOF TOP UNITS SIZED TO EXCEED THE MINIMUM 0.06 CFM/SQ FT REQUIREMENT

SEE VENTILATION SCHEDULES FOR OTHER UNITS

1 MECH FLOOR PLAN - LEVEL 01B
M201B SCALE: 1/8" = 1'-0"

SERA
ARCHITECTURE
URBAN DESIGN + PLANNING
INTERIOR DESIGN
PORTLAND/OKLAHOMA
SERADENIGN.COM
7-22-22
M201B PERMIT SET
M201B PERMIT SET
M201B PERMIT SET

JACOBS

MODERA BEAVERTON
1220 SW BEAVERTON WAY, ST
BEAVERTON, OR 97005

REVISIONS

1 AB 01	22 AUG 2022
2 AB 02	19 SEP 2022
3 AB 03	4 NOV 2022

CHECKED BY:
ISSUE DATE: 25 JULY 2022
PROJECT NO: 2103063

MECH FLOOR
PLAN - LEVEL
01B
M201B
PERMIT SET