

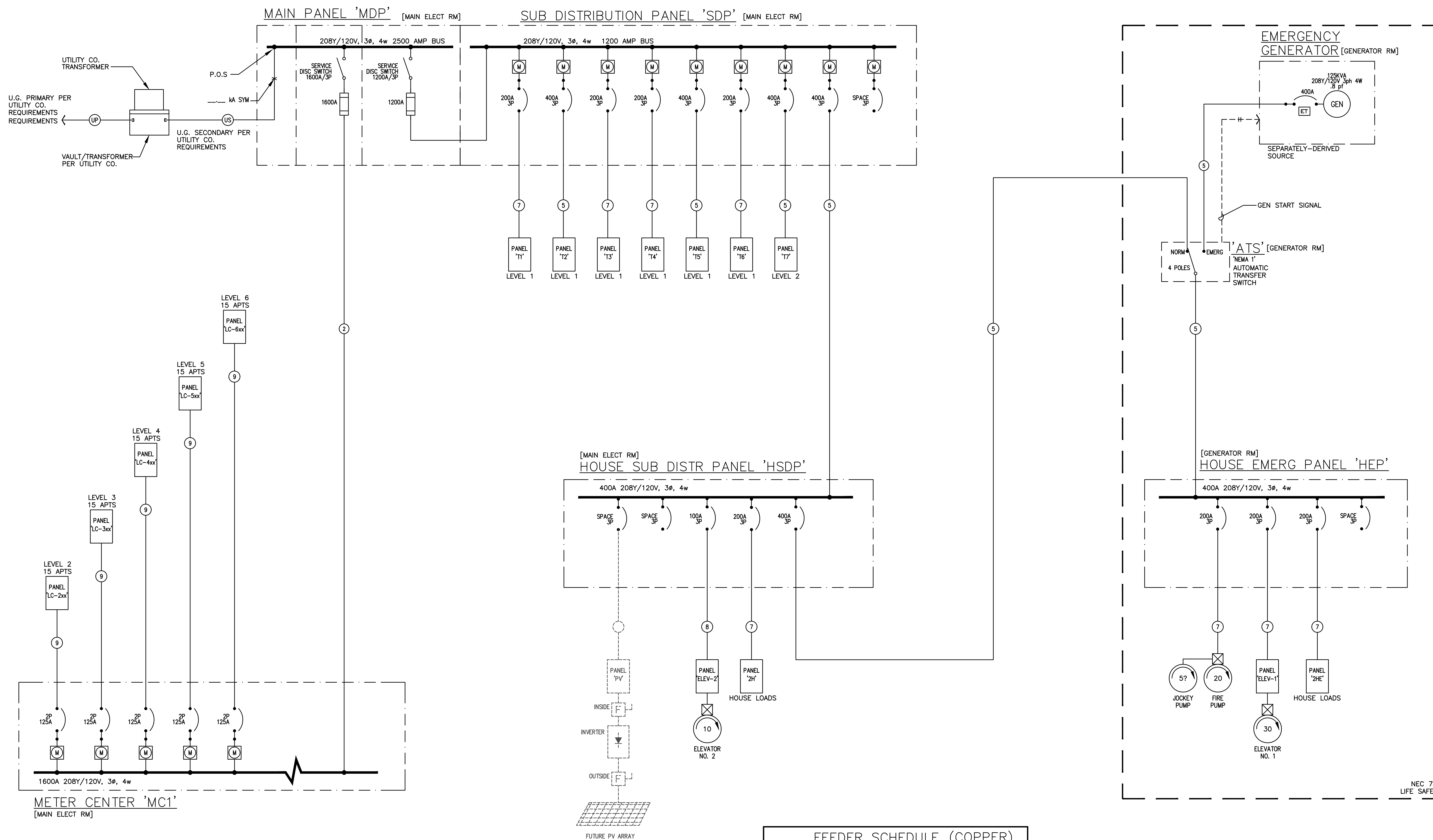


MEDIA Consulting Engineers
2007 S.E. Ash St.
Portland, OR 97214
PH: (503) 234-0548
FAX: (503) 234-0677
CONTACT: Robert Connell

PERMIT SET

09.17.2018
issue: date:
50% DD 04.30.2018
100% DD 06.18.2018
50% CD 08.03.2018
PERMIT 09.17.2018

revision: date:



FEEDER SCHEDULE (COPPER)					
NO.	AMPS	CONDUIT	CONDUCTOR		
(UP)			PER UTILITY	BY UTILITY CO.	& GND
(US)			PER UTILITY	BY UTILITY CO.	& GND
(2)	1600A	*(4) 4"	(4) #600Kcmil	& (1) #4/0	GND
(3)	1200A	*(3) 4"	(4) #600Kcmil	& (1) #3/0	GND
(4)	800A	*(2) 4"	(4) #600Kcmil	& (1) #1/0	GND
(5)	400A	3 1/2"	(4) #500Kcmil	& (1) #3	GND
(6)	250A	2 1/2"	(4) #250Kcmil	& (1) #4	GND
(7)	200A	2"	(4) #3/0	& (1) #6	GND
(8)	100A	1 1/2"	(4) #1	& (1) #8	GND
(9)	125A	1 1/2"	(3) #1	& (1) #6	GND
(10)	125A	2"	(4) #1/0	& (1) #1	GND
(11)	60A	1"	(3) #4	& (1) #10	GND

* PARALLEL FEEDER

1 ELECTRICAL ONE-LINE DIAGRAM
E5.02 208Y/120v, 3 ph, 4w

title:
ELECTRICAL ONE-LINE DIAGRAM

sheet:
E5.02