



**M** Consulting Engineers  
2007 S.E. Ash St.  
Portland, OR 97214  
PH: (503) 234-0548  
FAX: (503) 234-0677  
INC. WWW.MFIA-ENG.COM  
CONTACT: Robert Connell

**PERMIT SET**

09.17.2018

issue:	date:
50% DD	04.30.2018
100% DD	06.18.2018
50% CD	08.03.2018
PERMIT	09.17.2018

revision: date:

title:

**LIGHTING PLAN  
LEVEL 6**

sheet:

**E2.06**

AA

21

7

22

8

9

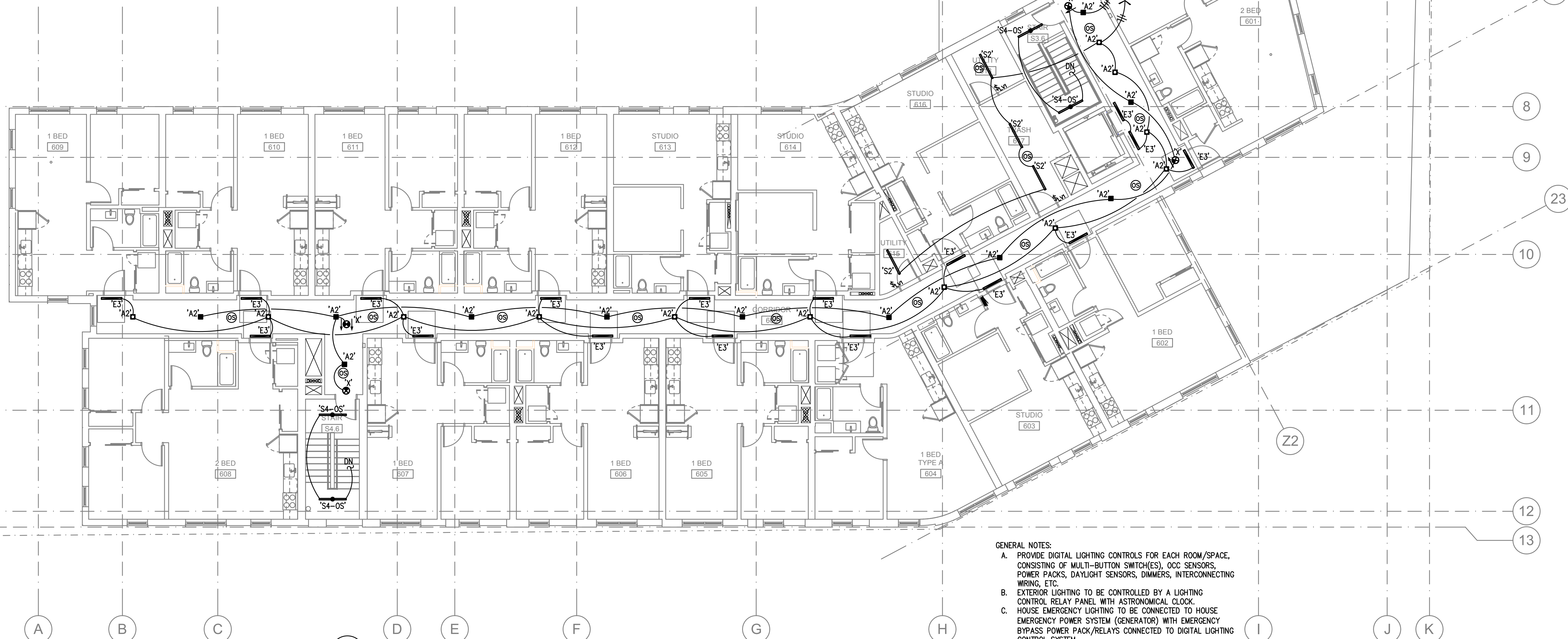
23

10

11

12

13



- GENERAL NOTES:
- A. PROVIDE DIGITAL LIGHTING CONTROLS FOR EACH ROOM/SPACE, CONSISTING OF MULTI-BUTTON SWITCH(ES), OCC SENSORS, POWER PACKS, DAYLIGHT SENSORS, DIMMERS, INTERCONNECTING WIRING, ETC.
  - B. EXTERIOR LIGHTING TO BE CONTROLLED BY A LIGHTING CONTROL RELAY PANEL WITH ASTRONOMICAL CLOCK.
  - C. HOUSE EMERGENCY LIGHTING TO BE CONNECTED TO HOUSE EMERGENCY POWER SYSTEM (GENERATOR) WITH EMERGENCY BYPASS POWER PACK/RELAYS CONNECTED TO DIGITAL LIGHTING CONTROL SYSTEM.
  - D. TENANT EMERGENCY LIGHTING TO HAVE EMERGENCY BATTERY BACKUP OR INVERTER.

**1 LIGHTING PLAN - LEVEL 6**  
E2.06 1/8" = 1'-0"

A

B

C

D

E

F

G

H

I

J

K