



M Consulting Engineers
2007 S.E. Ash St.
Portland, OR 97214
PH: (503) 234-0548
FAX: (503) 234-0677
INC. WWW.MFIA-ENG.COM
CONTACT: Robert Connell

PERMIT SET

09.17.2018

issue:	date:
50% DD	04.30.2018
100% DD	06.18.2018
50% CD	08.03.2018
PERMIT	09.17.2018

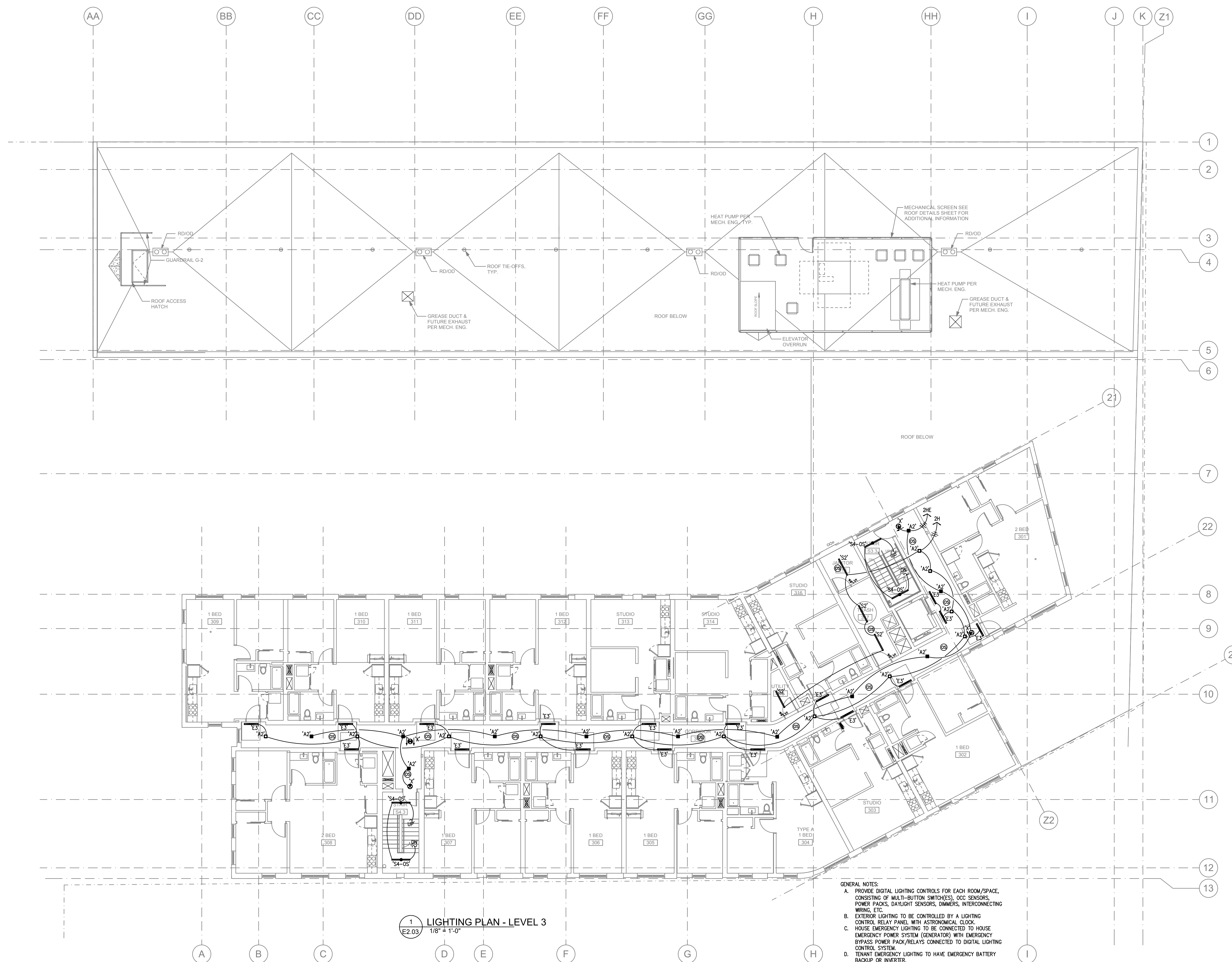
revision:	date:

title:

LIGHTING PLAN
LEVEL 3

sheet:

E2.03



- GENERAL NOTES:
- PROVIDE DIGITAL LIGHTING CONTROLS FOR EACH ROOM/SPACE, CONSISTING OF MULTI-BUTTON SWITCH(ES), OCC SENSORS, POWER PACKS, DAYLIGHT SENSORS, DIMMERS, INTERCONNECTING WIRING, ETC.
 - EXTERIOR LIGHTING TO BE CONTROLLED BY A LIGHTING CONTROL RELAY PANEL, WITH ASTRONOMICAL CLOCK.
 - HOUSE EMERGENCY LIGHTING TO BE CONNECTED TO HOUSE EMERGENCY POWER SYSTEM (GENERATOR) WITH EMERGENCY BYPASS POWER PACK/RELAYS CONNECTED TO DIGITAL LIGHTING CONTROL SYSTEM.
 - TENANT EMERGENCY LIGHTING TO HAVE EMERGENCY BATTERY BACKUP OR INVERTER.

12/20/2017 10:33:09 AM