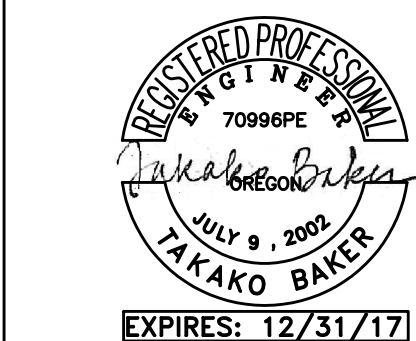


ASIAN HEALTH & SERVICE CENTER

SE 91ST AVE & SE FOSTER RD,
PORTLAND OR 97266

JOB NO. 15043.00



MFI Consulting Engineers
2007 S.E. Ash St.
Portland, OR 97214
PH: (503) 234-0548
FAX: (503) 234-0677
CONTACT: TAKAKO BAKER

PERMIT SET

07.22.2016

issue:	date:
100% SD	10.15.15
50% DD	12.09.15
100% DD	02.05.16
50% CD	03.30.16
75% CD	04.27.16
PERMIT SET	07.22.16

revision: date:

1 PERMIT REV (ADD 1)	01.24.17
2 PERMIT REV 2	02.09.17
3 PERMIT REV 3	03.08.17
4 CONST SET REV 4	03.31.17

title:

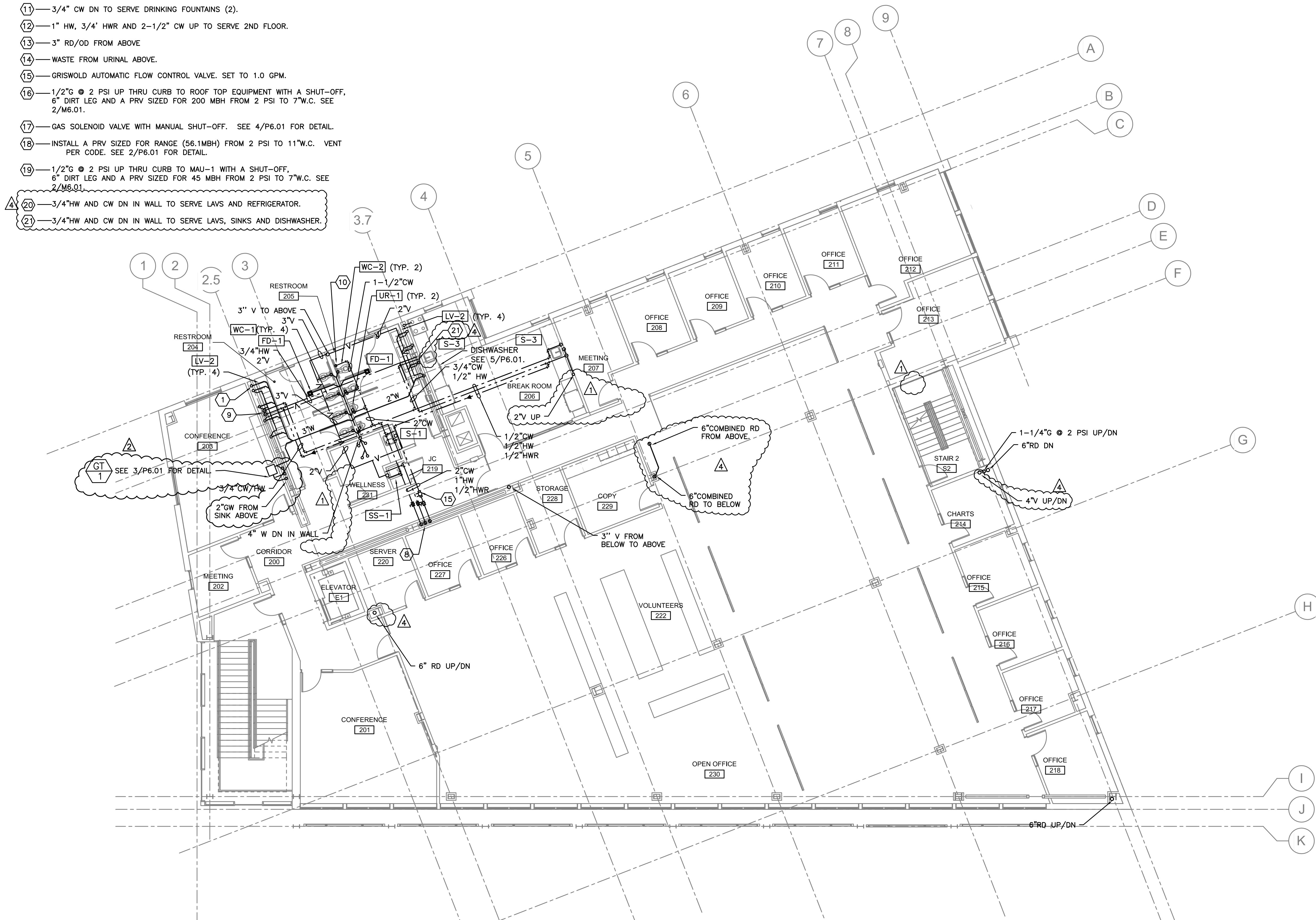
SECOND FLOOR PLUMBING PLAN

sheet:

P2.02

PLUMBING NOTES (X)

- ① — WASTE FROM SERVICE SINK ABOVE.
- ② — WASTE FROM WATER CLOSET ABOVE.
- ③ — WASTE FROM FLOOR DRAIN ABOVE.
- ④ — WASTE FROM LAVATORY(S) ABOVE.
- ⑤ — 3" WASTE DN IN WALL.
- ⑥ — WASTE FROM SINK ABOVE.
- ⑦ — WASTE FROM DRINKING FOUNTAIN ABOVE.
- ⑧ — 2" CW AND 1/2" HW TO ABOVE.
- ⑨ — 3/4" HW AND CW DN IN WALL TO SERVE LAVS/SINKS/
- ⑩ — 1-1/2" CW DN IN WALL TO SERVE (2) WATER CLOSETS, TYP.
- ⑪ — 3/4" CW DN TO SERVE DRINKING FOUNTAINS (2).
- ⑫ — 1" HW, 3/4" HWR AND 2-1/2" CW UP TO SERVE 2ND FLOOR.
- ⑬ — 3" RD/OD FROM ABOVE
- ⑭ — WASTE FROM URINAL ABOVE.
- ⑮ — GRISWOLD AUTOMATIC FLOW CONTROL VALVE. SET TO 1.0 GPM.
- ⑯ — 1/2" G @ 2 PSI UP THRU CURB TO ROOF TOP EQUIPMENT WITH A SHUT-OFF, 6" DIRT LEG AND A PRV SIZED FOR 200 MBH FROM 2 PSI TO 7" W.C. SEE 2/M6.01.
- ⑰ — GAS SOLENOID VALVE WITH MANUAL SHUT-OFF. SEE 4/P6.01 FOR DETAIL.
- ⑱ — INSTALL A PRV SIZED FOR RANGE (56.1MBH) FROM 2 PSI TO 11" W.C. VENT PER CODE. SEE 2/P6.01 FOR DETAIL.
- ⑲ — 1/2" G @ 2 PSI UP THRU CURB TO MAU-1 WITH A SHUT-OFF, 6" DIRT LEG AND A PRV SIZED FOR 45 MBH FROM 2 PSI TO 7" W.C. SEE 2/M6.01.
- ⑳ — 3/4" HW AND CW DN IN WALL TO SERVE LAVS AND REFRIGERATOR.
- ㉑ — 3/4" HW AND CW DN IN WALL TO SERVE LAVS, SINKS AND DISHWASHER.



PROJECT NORTH
1 SECOND FLOOR PLUMBING PLAN
P2.02 SCALE: 1/8" = 1'-0"