

O'Neill Walsh Community Builders

Submittal Form

OWCB

AHSC

(Project)

Submittal No. 001

Description: Terminal HVAC Equipment

Date: 10/27/17 **Return By:** 11/10/17

Division: 23

Section: 23 80 00

Andersen

Subcontract/Supplier:

The review by O'Neill Walsh Community Builders ("OWCB") of the above Submittal shall not relieve Subcontractor/Supplier from any of its obligations under the agreement with OWCB nor give rise to any claim in favor of the Subcontractor/Supplier or third parties against OWCB or Owner.

By: Logan Bright

O'Neill Walsh Community Builders

Notes:

ARCHITECT

Notes:

ENGINEER

Approved as noted.

Checking is only for general conformance with the design concept of the project and general compliance with the information given in the contact documents. Any action shown is subject to the requirements of the plans and specifications. Contractor is responsible for: Dimensions, which shall be confirmed and correlated at the job site; fabrication processes and techniques of construction; coordination of his work with that of all other trades; and the satisfactory performance of his work.

MFIA, Inc. Consulting Engineers

By: Takako Baker, Date:11/11/17

Notes:



*"Your Green Heating & Cooling Professionals
Dedicated to Serving You and Your Community."*

HVAC Submittals

**Yakima Clinic
9005 SE Foster Rd.
Portland, OR 97203**

**Submitted To:
O'Neill / Walsh Community Builders
2905 SW First Ave
Portland, OR 97201**

**Submitted By:
Andersen Mechanical
16285 SW 85th Ave, Suite 410
Tigard, OR 97224**



23_80_00

Terminal HVAC Equipment

October 11, 2017

SUBMITTAL

Project: Asian Health & Service Center _ **YAKIMA TI**

Contractor: Andersen Mechanical
16285 SW 85th Ave
Tigard, Oregon 97224

Engineer: MFIA
2007 S.E Ash St.
Portland Oregon 97214

Section: VRV System



Manufacturer: Daikin AC

Daikin Equipment included in TI follows:

Qty 1: Branch Selector Box Model BS6Q54TVJU
Qty 2: 3.0 Ton Ducted Fan Coil Model FXMQ36
Qty 1: 2.0 Ton Ducted Fan Coil Model FXMQ24
Qty 1: 1.5 Ton Ducted Fan Coil Model FXMQ18
Qty 2: 1.0 Ton Cassette Fan Coil Model FXZQ12
Qty 6: Wall Controller Model BRC1E73

Qty 1: 2.0 Ton Wall Mounted, Cooling Only Split System w/ Remote Controller included as stand alone system for Server Room.
Model FTK24NM/RK24NM

Submitted

Steve Patnode



2. Indoor Unit Details

2.1. Table of Abbreviations

Name	Logical name of the device
FCU	Device model name
Tmp C	Indoor conditions in cooling (dry bulb temp. / wet bulb temp.)
Rq TC	Required total cooling capacity
Max TC	Available total cooling capacity
Rq SC	Required sensible cooling capacity
Max SC	Available sensible cooling capacity
Tevap	Evaporating temperature of indoor unit coil
Tdis C	Indoor unit discharge air temperature in cooling
Tmp H	Indoor temperature in heating
Rq HC	Required heating capacity
Max HC	Available heating capacity
Tdis H	Indoor unit discharge air temperature in heating
Airflow	Supplied airflow
Sound	Sound pressure low and high
PS	Power supply (voltage and phases)
MCA	Minimum Circuit Amps
Fuses	Fuses
WxHxD	WidthxHeightxDepth
Wght	Weight of the device



2.2. HP-1 - REYQ264TTJU

Capacity data at conditions and connection ratio (119%) as entered

Name	FCU	Tmp C	Rq TC	Max TC	Rq SC	Max SC	Tevap	Tdis C	Tmp H	Rq HC	Max HC	Tdis H	Airflow
		°F	BTU/h	BTU/h	BTU/h	BTU/h	°F	°F	°F	BTU/h	BTU/h	°F	cfm
FC-1	Existing Fan Coils												
FC-8													
FC-9													
CC-14													
CC-8													
CC-17													
WU-1													
Future FC-A4	FXMQ36PBVJU	80.0 / 67.0	n/a	36000	n/a	28079	42.8	57.5	64.0	n/a	44686	85.4	1130
Future FC-A3	FXMQ24PBVJU	80.0 / 67.0	n/a	24002	n/a	18340	42.8	55.8	64.0	n/a	30151	87.4	688
Future FC-A2	FXMQ18PBVJU	80.0 / 67.0	n/a	18000	n/a	15177	42.8	58.3	64.0	n/a	22337	83.0	635
Future CC-A2	FXZQ12MVJU9	80.0 / 67.0	n/a	12002	n/a	7841	42.8	58.8	64.0	n/a	14766	88.0	335
Future CC-A1	FXZQ12MVJU9	80.0 / 67.0	n/a	12002	n/a	7841	42.8	58.8	64.0	n/a	14766	88.0	335
Future FC-A1	FXMQ36PBVJU	80.0 / 67.0	n/a	36000	n/a	28079	42.8	57.5	64.0	n/a	44686	85.4	1130

Yakima TI Fan Coils

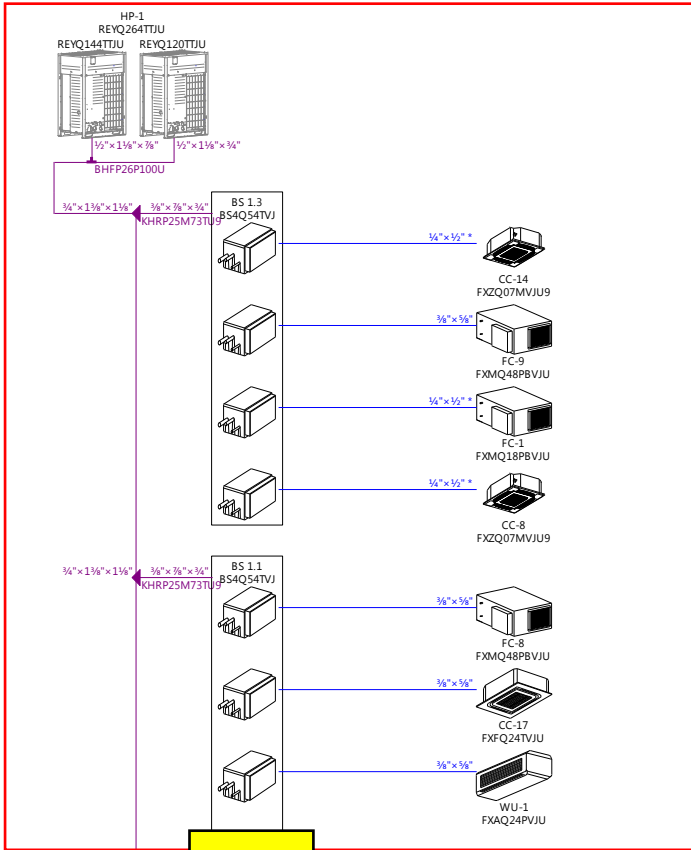
Name	Sound	PS	MCA	Fuses	WxHxD	Wght
	dBA		A		inch	lbs
FC-1	38-42	230V 1ph	1.6	15A	39.4x11.8x27.6	79
FC-8	40-44	230V 1ph	3.4	15A	55.1x11.8x27.6	101
FC-9	40-44	230V 1ph	3.4	15A	55.1x11.8x27.6	101
CC-14	29-31	230V 1ph	0.8	15A	22.6x11.3x22.6	42
CC-8	29-31	230V 1ph	0.8	15A	22.6x11.3x22.6	42
CC-17	28-36	230V 1ph	0.7	15 A	33.1x9.7x33.1	51
WU-1	41-47	230V 1ph	0.6	15A	41.4x11.4x9.3	31
Future FC-A4	39-43	230V 1ph	2.9	15A	55.1x11.8x27.6	101
Future FC-A3	38-42	230V 1ph	1.8	15A	39.4x11.8x27.6	79
Future FC-A2	38-42	230V 1ph	1.6	15A	39.4x11.8x27.6	79
Future CC-A2	29-33	230V 1ph	0.8	15A	22.6x11.3x22.6	42
Future CC-A1	29-33	230V 1ph	0.8	15A	22.6x11.3x22.6	42
Future FC-A1	39-43	230V 1ph	2.9	15A	55.1x11.8x27.6	101

The Xpress Selection Program is property of Daikin Europe NV. Daikin Europe NV cannot be held liable for any inaccuracy, reliability of the outcome of the Xpress Selection Program.

4. Piping Diagrams

Pipes marked with * in the diagrams must be connected to the device with a reducing joint.

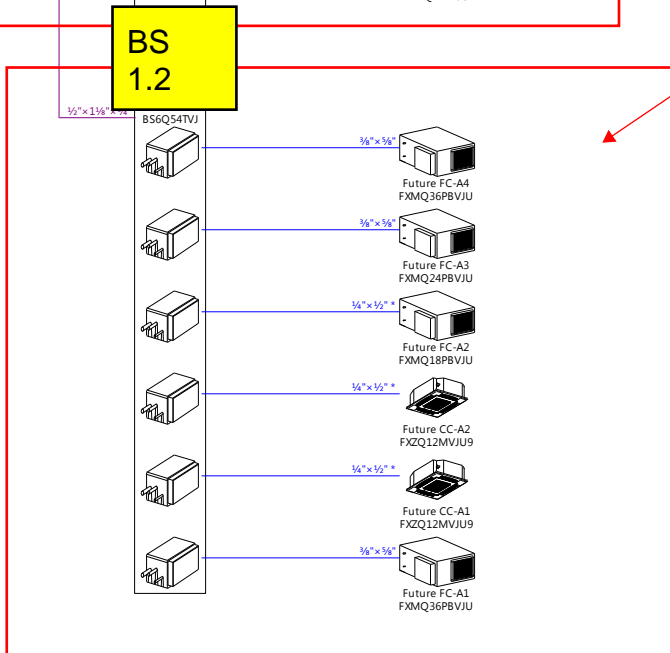
4.1. Piping HP-1



Contractor to confirm pipe routing and lengths with Air Reps prior to install.

Existing Equipment

Future BS and Fan Coils
- Yakima Valley Clinic TI



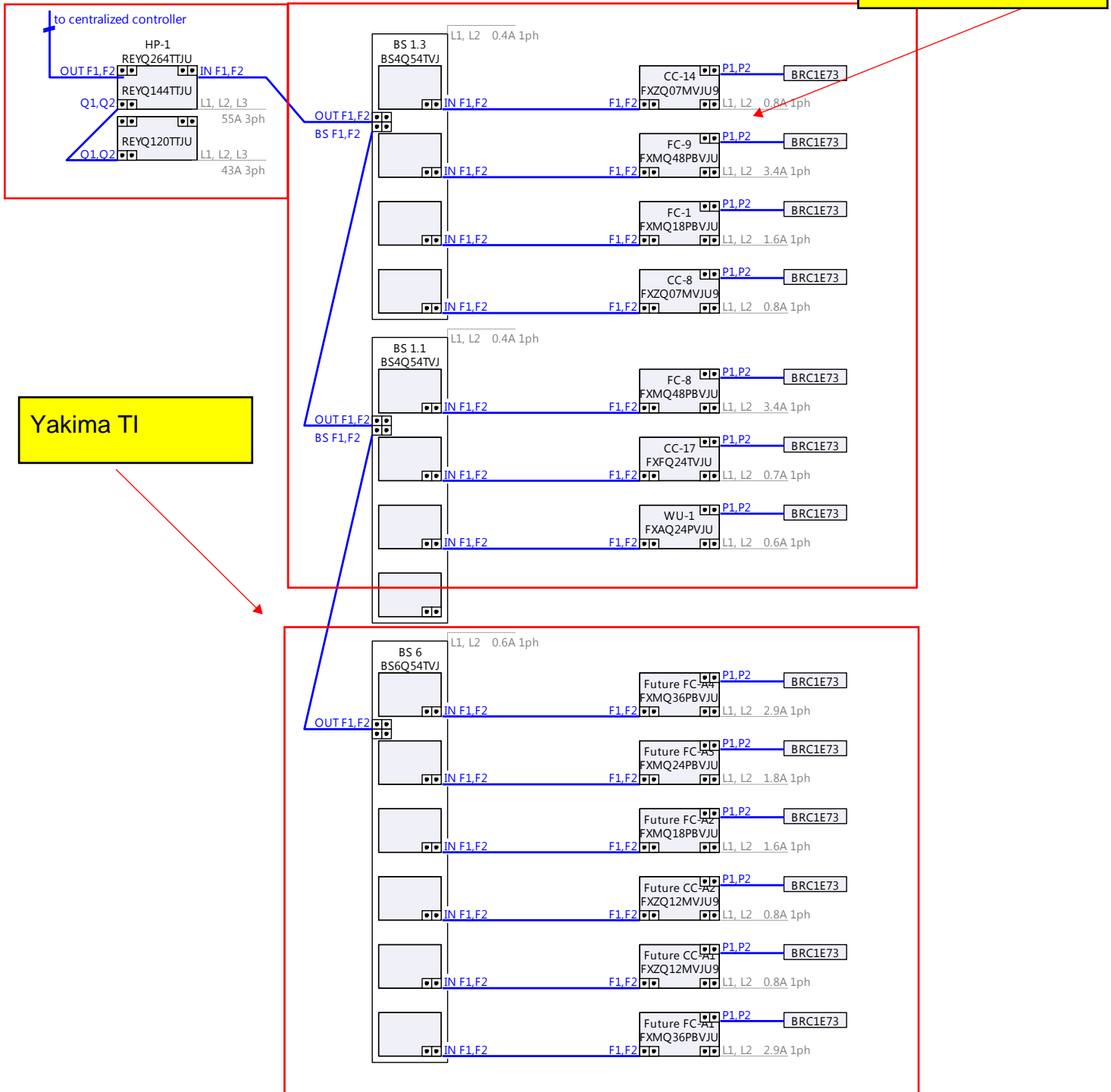
5. Wiring Diagrams

P1P2 = Please select the cable type and size in accordance with the databook.

F1F2 = Please select the cable type and size in accordance with the databook.

5.1. Wiring HP-1

Existing Equipment



The Xpress Selection Program is property of Daikin Europe NV. Daikin Europe NV cannot be held liable for any inaccuracy, reliability of the outcome of the Xpress Selection Program.



Submittal Data Sheet

1.0-Ton 2'x2' 4-Way Ceiling Cassette - FXZQ12MVJU9

Project: Asian Health 5-11-2017

Submitted by: Steve Patnode of AIR REPS LLC - OREGON on 5/11/2017

Submitted to: No Engineer Name Specified

Tags: ~~Future CC-A2~~, ~~Future CC-A1~~

FEATURES

- New and extremely compact casing (2'x2') enables unit to fit flush into ceilings and match standard architectural modules, without cutting ceiling tiles
- Modern style decoration panel in white
- Quiet operation down to 25 dBA sound pressure level
- Vertical auto-swing function moves the discharge flaps up and down for efficient air distribution throughout the room
- Any one of 5 air flow patterns can be freely selected between zero and 40 degrees and will then be maintained during the operational cycle of the air conditioner
- Integral condensate pump with up to 21-7/16" lift
- Standard Limited Warranty: 10-year warranty on compressor and all parts



VRV





Submittal Data Sheet

1.0-Ton 2'x2' 4-Way Ceiling Cassette - FXZQ12MVJU9

Project: Asian Health 5-11-2017

Submitted by: Steve Patnode of AIR REPS LLC - OREGON on 5/11/2017

Submitted to: No Engineer Name Specified

Tags: Future CC-A2, Future CC-A1

PERFORMANCE

Indoor Unit Model No.	FXZQ12MVJU9	Indoor Unit Name:	1.0-Ton 2'x2' 4-Way Ceiling Cassette
Type:	Ceiling Cassette	Rated Cooling Conditions:	Indoor (°F DB/WB): 80 / 67 Ambient (°F DB/WB): 95 / 75
Rated Cooling Capacity (Btu/hr):	12,000	Rated Heating Conditions:	Indoor (°F DB/WB): 70 / 70 Ambient (°F DB/WB): 47 / 43
Sensible Capacity (Btu/hr):	8,000	Rated Piping Length(ft):	
Cooling Input Power (kW):	0.080	Rated Height Separation (ft):	
Rated Heating Capacity (Btu/hr):	14,000		
Heating Input Power (kW):	0.07		

INDOOR UNIT DETAILS

Power Supply (V/Hz/Ph):	208-230 / 60 / 1	Airflow Rate (H/L) (CFM):	335/265
Power Supply Connections:	L1, L2, Ground	Moisture Removal (Gal/hr):	
Min. Circuit Amps MCA (A):	0.80	Gas Pipe Connection (inch):	1/2
Max Overcurrent Protection (MOP) (A):	15.00	Liquid Pipe Connection (inch):	1/4
Dimensions (HxWxD) (in):	11 1/4 x 22 5/8 x 22 5/8	Condensate Connection (inch):	1-1/32
Panel (HxWxD) (in):	2 5/32 x 27 9/16 x 27 9/16	Sound Pressure (H/L) (dBA):	41/34
Net Weight (lb):	42	Sound Power Level (dBA):	
Panel Weight (lb):	6	Ext. Static Pressure (Rated/Max) (inWg):	0.00 / 0.00

Submittal Data Sheet

1.0-Ton 2'x2' 4-Way Ceiling Cassette - FXZQ12MVJU9

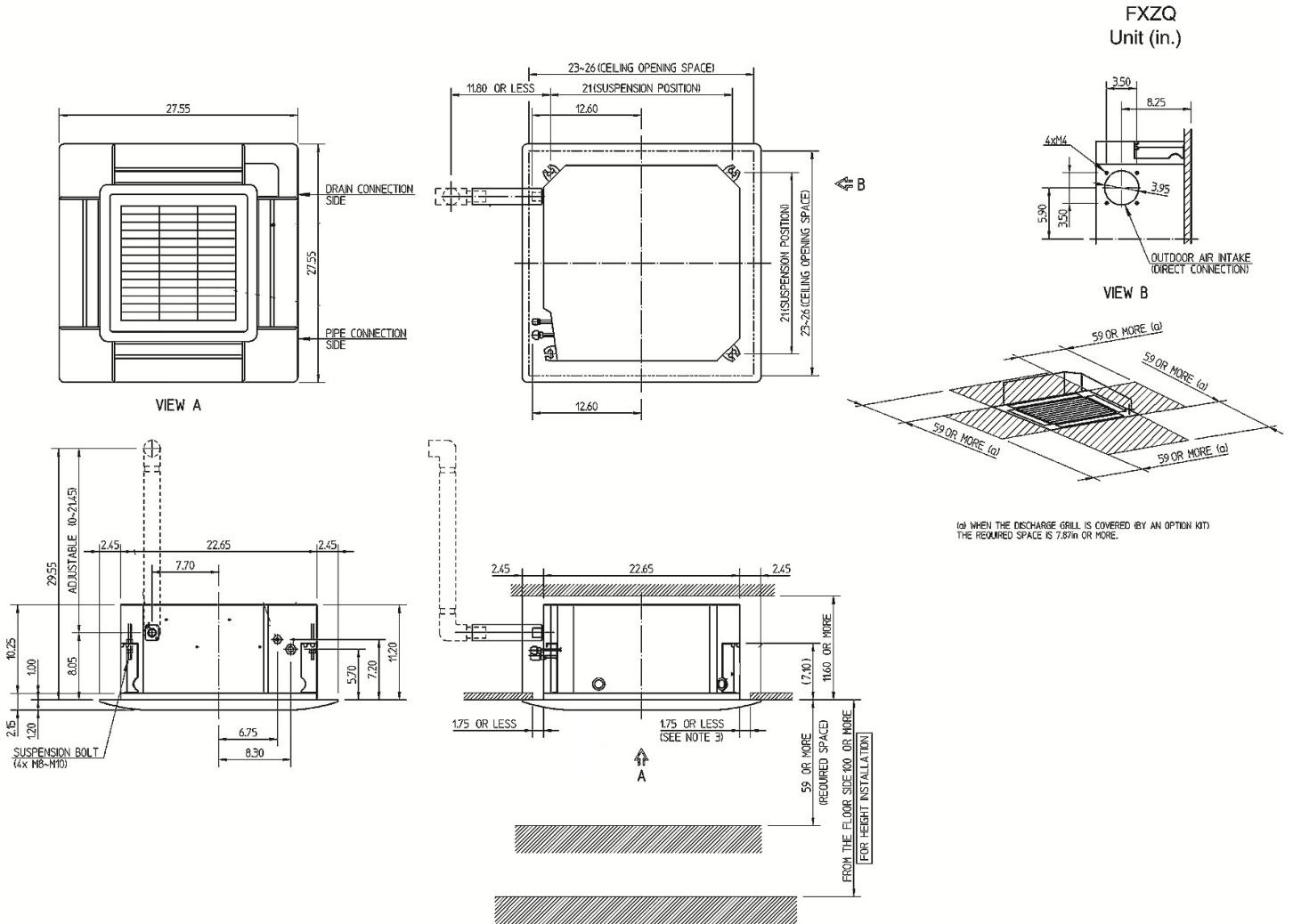
Project: Asian Health 5-11-2017

Submitted by: Steve Patnode of AIR REPS LLC - OREGON on 5/11/2017

Submitted to: No Engineer Name Specified

Tags: Future CC-A2, Future CC-A1

DIMENSIONAL DRAWING





Submittal Data Sheet

1.5-Ton DC Ducted Concealed Ceiling - FXMQ18PBVJU

Project: Asian Health 5-11-2017

Submitted by: Steve Patnode of AIR REPS LLC - OREGON on 5/11/2017

Submitted to: No Engineer Name Specified

Tags: ~~Future~~ FC-A2

FEATURES

- Increased capacity range for increased flexibility
- Improved efficiency with DC fan motor
- Ease of installation with auto adjusting airflow at commissioning based on external static pressure
- Easy maintenance with service access from below
- Installation flexibility with a low profile, compact design at less than 12" in height
- Integral condensate pump with up to 18-3/8" lift
- Standard Limited Warranty: 10-year warranty on compressor and all parts

BENEFITS

- Enhanced indoor air quality and LEED ready with MERV 13 filter options
- Flexible ductwork design with ESP capabilities up to 0.80" W.G.
- New economizer control logic
- New configurable auxiliary heater control logic
- Design allows it to be completely concealed - perfect for retail, classrooms, offices, banks, restaurants, and hotels.





Submittal Data Sheet

1.5-Ton DC Ducted Concealed Ceiling - FXMQ18PBVJU

Project: Asian Health 5-11-2017

Submitted by: Steve Patnode of AIR REPS LLC - OREGON on 5/11/2017

Submitted to: No Engineer Name Specified

Tags: Future FC-A2

PERFORMANCE

Indoor Unit Model No.	FXMQ18PBVJU	Indoor Unit Name:	1.5-Ton DC Ducted Concealed Ceiling
Type:	Ducted	Rated Cooling Conditions:	Indoor (°F DB/WB): 80 / 67 Ambient (°F DB/WB): 95 / 75
Rated Cooling Capacity (Btu/hr):	18,000	Rated Heating Conditions:	Indoor (°F DB/WB): 70 / 70 Ambient (°F DB/WB): 47 / 43
Sensible Capacity (Btu/hr):	14,400	Rated Piping Length(ft):	
Cooling Input Power (kW):	0.210	Rated Height Separation (ft):	
Rated Heating Capacity (Btu/hr):	20,000		
Heating Input Power (kW):	0.20		

INDOOR UNIT DETAILS

Power Supply (V/Hz/Ph):	208-230 / 60 / 1	Airflow Rate (HH/H/M/L) (CFM):	635/635/582/529
Power Supply Connections:	L1, L2, Ground	Moisture Removal (Gal/hr):	
Min. Circuit Amps MCA (A):	1.60	Gas Pipe Connection (inch):	1/2
Max Overcurrent Protection (MOP) (A):	15.00	Liquid Pipe Connection (inch):	1/4
Dimensions (HxWxD) (in):	11-13/16 x 39-3/8 x 27-9/16	Condensate Connection (inch):	1-1/4
Panel (HxWxD) (in):		Sound Pressure (H/M/L) (dBA):	41/39/37
Net Weight (lb):	80	Sound Power Level (dBA):	
Panel Weight (lb):		Ext. Static Pressure (Rated/Max) (inWg):	0.40 / 0.80

Submittal Data Sheet

1.5-Ton DC Ducted Concealed Ceiling - FXMQ18PBVJU

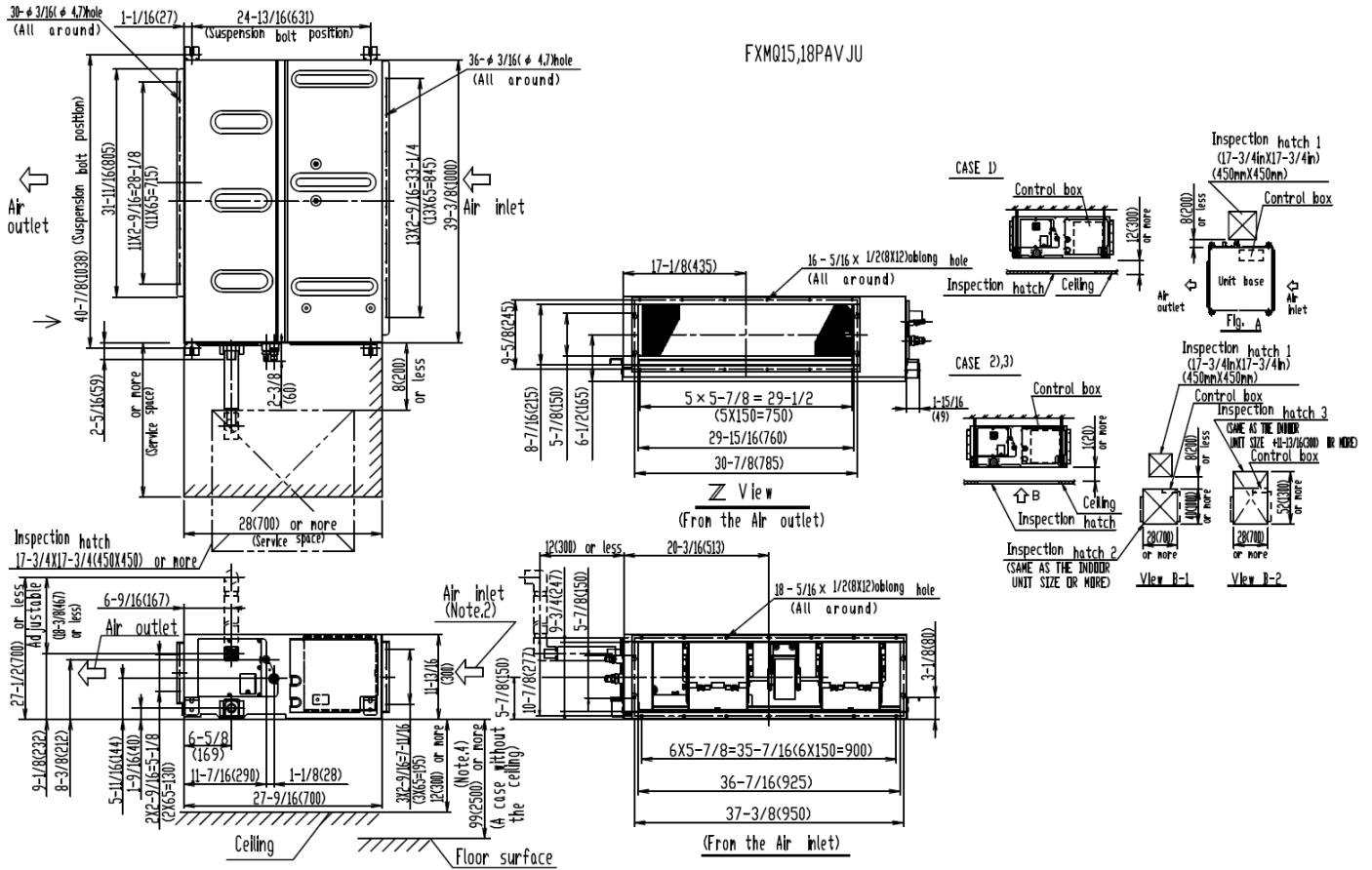
Project: Asian Health 5-11-2017

Submitted by: Steve Patnode of AIR REPS LLC - OREGON on 5/11/2017

Submitted to: No Engineer Name Specified

Tags: Future FC-A2

DIMENSIONAL DRAWING





Submittal Data Sheet

2.0-Ton DC Ducted Concealed Ceiling - FXMQ24PBVJU

Project: Asian Health 5-11-2017

Submitted by: Steve Patnode of AIR REPS LLC - OREGON on 5/11/2017

Submitted to: No Engineer Name Specified

Tags: ~~Future~~ FC-A3

FEATURES

- Increased capacity range for increased flexibility
- Improved efficiency with DC fan motor
- Ease of installation with auto adjusting airflow at commissioning based on external static pressure
- Easy maintenance with service access from below
- Installation flexibility with a low profile, compact design at less than 12" in height
- Integral condensate pump with up to 18-3/8" lift
- Standard Limited Warranty: 10-year warranty on compressor and all parts

BENEFITS

- Enhanced indoor air quality and LEED ready with MERV 13 filter options
- Flexible ductwork design with ESP capabilities up to 0.80" W.G.
- New economizer control logic
- New configurable auxiliary heater control logic
- Design allows it to be completely concealed - perfect for retail, classrooms, offices, banks, restaurants, and hotels.



VRV





Submittal Data Sheet

2.0-Ton DC Ducted Concealed Ceiling - FXMQ24PBVJU

Project: Asian Health 5-11-2017

Submitted by: Steve Patnode of AIR REPS LLC - OREGON on 5/11/2017

Submitted to: No Engineer Name Specified

Tags: Future FC-A3

PERFORMANCE

Indoor Unit Model No.	FXMQ24PBVJU	Indoor Unit Name:	2.0-Ton DC Ducted Concealed Ceiling
Type:	Ducted	Rated Cooling Conditions:	Indoor (°F DB/WB): 80 / 67 Ambient (°F DB/WB): 95 / 75
Rated Cooling Capacity (Btu/hr):	24,000	Rated Heating Conditions:	Indoor (°F DB/WB): 70 / 70 Ambient (°F DB/WB): 47 / 43
Sensible Capacity (Btu/hr):	18,800	Rated Piping Length(ft):	
Cooling Input Power (kW):	0.230	Rated Height Separation (ft):	
Rated Heating Capacity (Btu/hr):	27,000		
Heating Input Power (kW):	0.22		

INDOOR UNIT DETAILS

Power Supply (V/Hz/Ph):	208-230 / 60 / 1	Airflow Rate (HH/H/M/L) (CFM):	688/688/618/565
Power Supply Connections:	L1, L2, Ground	Moisture Removal (Gal/hr):	
Min. Circuit Amps MCA (A):	1.80	Gas Pipe Connection (inch):	5/8
Max Overcurrent Protection (MOP) (A):	15.00	Liquid Pipe Connection (inch):	3/8
Dimensions (HxWxD) (in):	11-13/16 x 39-3/8 x 27-9/16	Condensate Connection (inch):	1-1/4
Panel (HxWxD) (in):		Sound Pressure (H/M/L) (dBA):	42/40/38
Net Weight (lb):	80	Sound Power Level (dBA):	
Panel Weight (lb):		Ext. Static Pressure (Rated/Max) (inWg):	0.40 / 0.80



Submittal Data Sheet

3.0-Ton DC Ducted Concealed Ceiling - FXMQ36PBVJU

Project: Asian Health 5-11-2017

Submitted by: Steve Patnode of AIR REPS LLC - OREGON on 5/11/2017

Submitted to: No Engineer Name Specified

Tags: ~~Future FC-A4~~, ~~Future FC-A1~~

FEATURES

- Increased capacity range for increased flexibility
- Improved efficiency with DC fan motor
- Ease of installation with auto adjusting airflow at commissioning based on external static pressure
- Easy maintenance with service access from below
- Installation flexibility with a low profile, compact design at less than 12" in height
- Integral condensate pump with up to 18-3/8" lift
- Standard Limited Warranty: 10-year warranty on compressor and all parts

BENEFITS

- Enhanced indoor air quality and LEED ready with MERV 13 filter options
- Flexible ductwork design with ESP capabilities up to 0.80" W.G.
- New economizer control logic
- New configurable auxiliary heater control logic
- Design allows it to be completely concealed - perfect for retail, classrooms, offices, banks, restaurants, and hotels.





Submittal Data Sheet

3.0-Ton DC Ducted Concealed Ceiling - FXMQ36PBVJU

Project: Asian Health 5-11-2017

Submitted by: Steve Patnode of AIR REPS LLC - OREGON on 5/11/2017

Submitted to: No Engineer Name Specified

Tags: Future FC-A4, Future FC-A1

PERFORMANCE

Indoor Unit Model No.	FXMQ36PBVJU	Indoor Unit Name:	3.0-Ton DC Ducted Concealed Ceiling
Type:	Ducted	Rated Cooling Conditions:	Indoor (°F DB/WB): 80 / 67 Ambient (°F DB/WB): 95 / 75
Rated Cooling Capacity (Btu/hr):	36,000	Rated Heating Conditions:	Indoor (°F DB/WB): 70 / 70 Ambient (°F DB/WB): 47 / 43
Sensible Capacity (Btu/hr):	28,800	Rated Piping Length(ft):	
Cooling Input Power (kW):	0.380	Rated Height Separation (ft):	
Rated Heating Capacity (Btu/hr):	40,000		
Heating Input Power (kW):	0.36		

INDOOR UNIT DETAILS

Power Supply (V/Hz/Ph):	208-230 / 60 / 1	Airflow Rate (HH/H/M/L) (CFM):	1,130/1,130/953/812
Power Supply Connections:	L1, L2, Ground	Moisture Removal (Gal/hr):	
Min. Circuit Amps MCA (A):	2.90	Gas Pipe Connection (inch):	5/8
Max Overcurrent Protection (MOP) (A):	15.00	Liquid Pipe Connection (inch):	3/8
Dimensions (HxWxD) (in):	11-13/16 x 55-1/8 x 27-9/16	Condensate Connection (inch):	1-1/4
Panel (HxWxD) (in):		Sound Pressure (H/M/L) (dBA):	43/41/39
Net Weight (lb):	102	Sound Power Level (dBA):	
Panel Weight (lb):		Ext. Static Pressure (Rated/Max) (inWg):	0.40 / 0.80

Submittal Data Sheet

3.0-Ton DC Ducted Concealed Ceiling - FXMQ36PBVJU

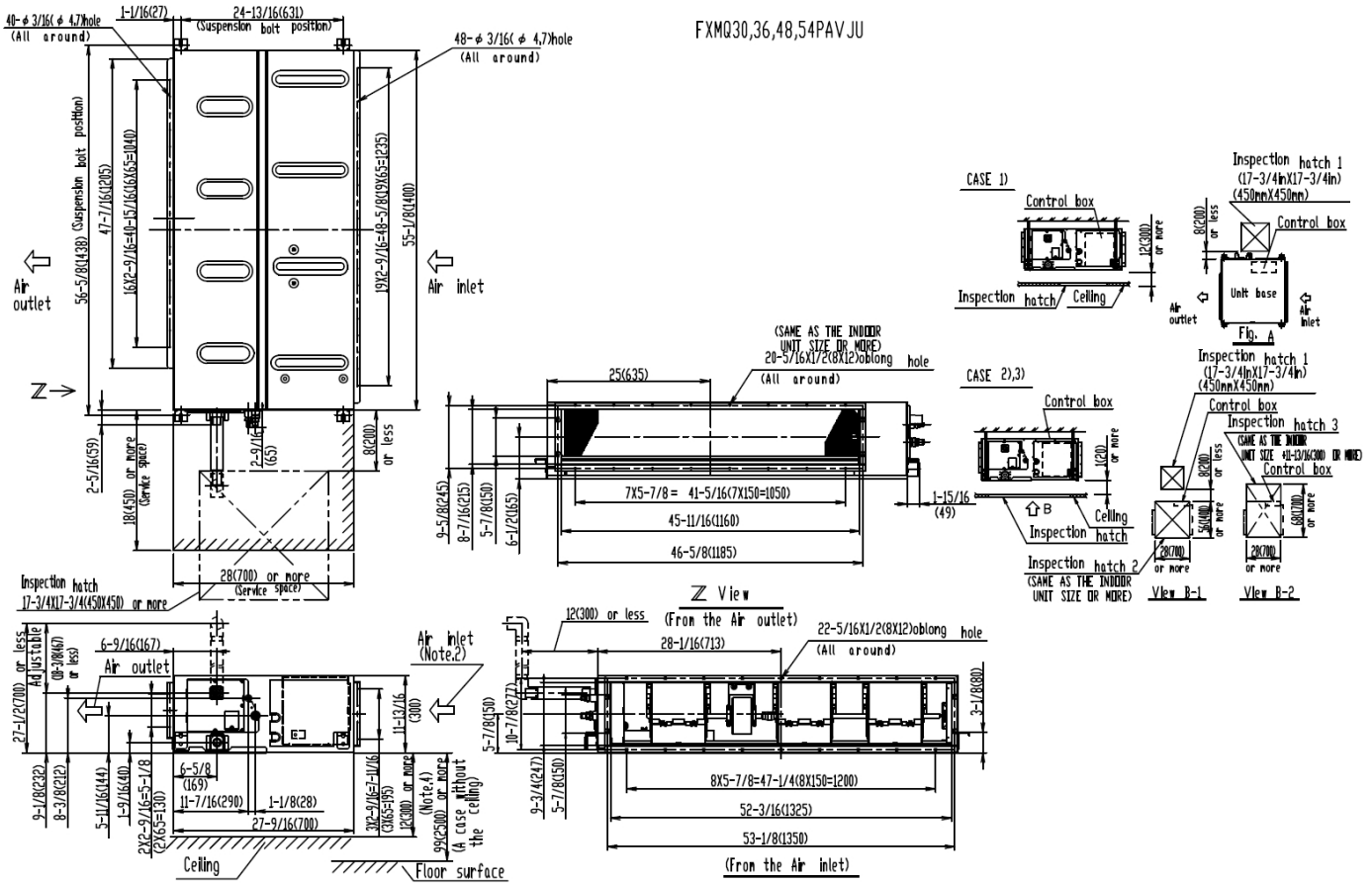
Project: Asian Health 5-11-2017

Submitted by: Steve Patnode of AIR REPS LLC - OREGON on 5/11/2017

Submitted to: No Engineer Name Specified

Tags: Future FC-A4, Future FC-A1

DIMENSIONAL DRAWING





Submittal Data Sheet

Branch Selector Box (6-Port) - BS6Q54TVJ

Project: Asian Health 5-11-2017

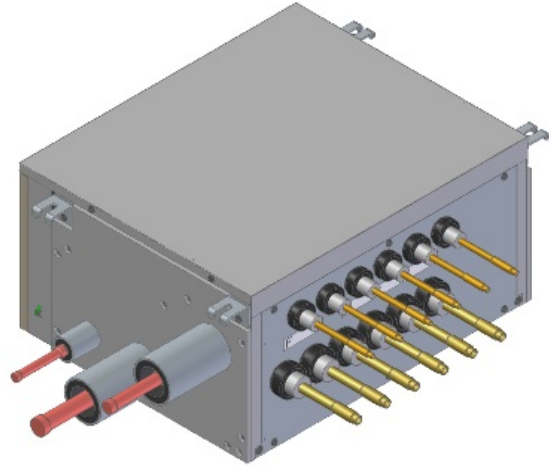
Submitted by: Steve Patnode of AIR REPS LLC - OREGON on 5/11/2017

Submitted to: No Engineer Name Specified

Tags: BS 1.2

FEATURES

- Individual control and changeover with extended range of product offerings - 4, 6, 8, 10 and 12 port options.
- Up to 54 MBH capacity per port.
- Lower sound levels thanks to simplified mechanical design, when compared to VRV III models.
- Ultimate design flexibility - single and multi-port units can be combined in one system.
- Quick installation due to fewer brazing points and less wiring.
- Unlimited number of unused ports per box or system.
- Low built-in height.
- No drain piping needed.
- Standard Limited Warranty: 10-year warranty on all parts.



VRV





Submittal Data Sheet

Branch Selector Box (6-Port) - BS6Q54TVJ

Project: Asian Health 5-11-2017

Submitted by: Steve Patnode of AIR REPS LLC - OREGON on 5/11/2017

Submitted to: No Engineer Name Specified

Tags: BS 1.2

PERFORMANCE

Indoor Unit Model No.	BS6Q54TVJ	Indoor Unit Name:	Branch Selector Box (6-Port)
Type:	Heat Recovery	Rated Cooling Conditions:	Indoor (°F DB/WB): / Ambient (°F DB/WB): /
Rated Cooling Capacity (Btu/hr):	216,000	Rated Heating Conditions:	Indoor (°F DB/WB): / Ambient (°F DB/WB): /
Sensible Capacity (Btu/hr):		Rated Piping Length(ft):	
Cooling Input Power (kW):	0.060	Rated Height Separation (ft):	
Heating Input Power (kW):	0.06		

INDOOR UNIT DETAILS

Power Supply (V/Hz/Ph):	208-230 / 60 / 1	Airflow Rate () (CFM):	
Power Supply Connections:	L1, L2, Ground	Moisture Removal (Gal/hr):	
Min. Circuit Amps MCA (A):	0.60	Gas Pipe Connection (inch):	1-1/8
Max Overcurrent Protection (MOP) (A):	15.00	Liquid Pipe Connection (inch):	1/2
Dimensions (HxWxD) (in):	11-3/4 x 22-13/16 x 18-15/16	Condensate Connection (inch):	
Panel (HxWxD) (in):		Sound Pressure (H) (dBA):	39
Net Weight (lb):	68	Sound Power Level (dBA):	
Panel Weight (lb):		Ext. Static Pressure (Rated/Max) (inWg):	/



Submittal Data Sheet

Branch Selector Box (6-Port) - BS6Q54TVJ

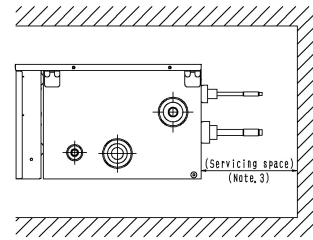
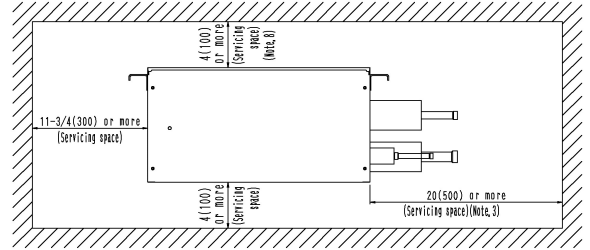
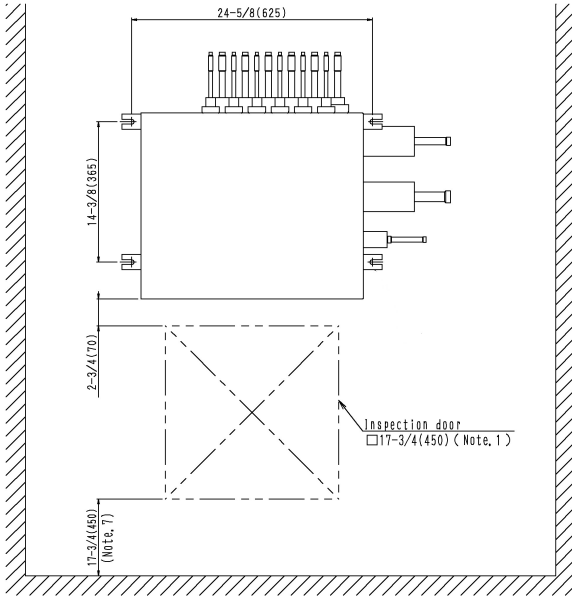
Project: Asian Health 5-11-2017

Submitted by: Steve Patnode of AIR REPS LLC - OREGON on 5/11/2017

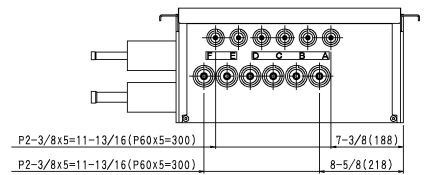
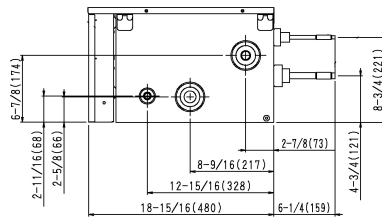
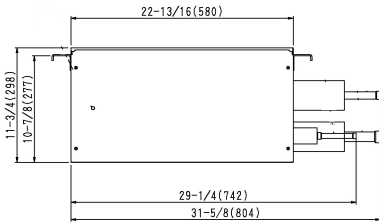
Submitted to: No Engineer Name Specified

Tags: BS 1.2

DIMENSIONAL DRAWING



Servicing space



Submittal Data Sheet

BRC1E73 - Navigation Remote Controller

Project Name:	Approval:
Location:	Date:
Engineer:	Construction:
Submitted to:	Unit #:
Submitted by:	Drawing #:
Reference:	

Model Compatibility:

For use with the following VRV indoor unit models: FXAQ, FXDQ, FXEQ, FXFQ, FXHQ, FXLQ, FXMQ, FXMQ_MF, FXNQ, FXTQ, FXUQ, FXZQ
 For use with the following Daikin SkyAir indoor unit models: FAQ, FBQ, FCQ, FHQ, FTQ

Specifications:

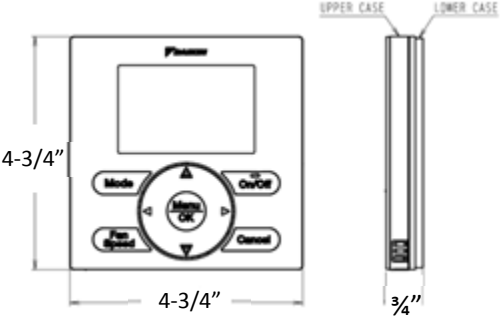
Model	BRC1E73
Description	Navigation Remote Controller
Maximum Connections	16 indoor units
Communication Wire	18AWG-2, No polarity Stranded, Non-shielded
Total Wiring Length	1,640 ft. (500 m)
Communication Protocol	Daikin Proprietary P1P2 protocol
Power	16VDC supplied by Indoor unit (1.58VA maximum)
Comfort Setpoint Range	60 to 90 °F (16 to 32 °C)
Setback Setpoint Range	40 to 95 °F (5 to 35 °C)
Operating Temp Range	14 to 122 °F (-10 to 50 °C)
Operating Humidity Range	75% or less (RH) (w/o condensation)
Dimensions (WxHxD)	4.72x4.72x0.75 inch (120x120x19 mm)
Weight (Mass)	0.42 lbs. (0.19 kg)

Product Image:

1 of 3 display options – Detailed display shown



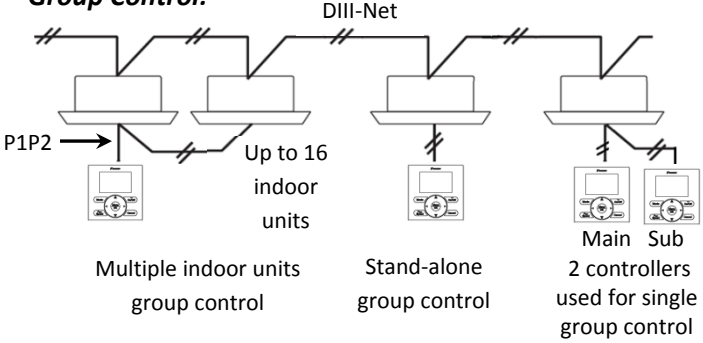
Dimensions:



Features/Benefits:

1. Up to 16 indoor units are controllable within one group
2. Within one group, up to 2 Navigation Remote Controllers can be used, one as a main and one as a sub
3. Backlit LCD displays in English, Spanish or French
4. Temperature sensor built-in with configurable offset
5. Display of Temperature and Setpoint in 1°F / °C increments
6. Three configurable display options: Detailed, Standard and Simple
7. Dual setpoints (independent cooling and heating setpoints) with configurable minimum setpoint differential or Single Setpoint (occupied period)
8. Setpoint range limit for cooling and heating modes
9. Independent cooling and heating setback setpoints (unoccupied period)
10. Auto changeover control with configurable Primary changeover at setpoint ±1° F with guard timer

Group Control:



Daikin North America LLC, 5151 San Felipe Suite 500, Houston, TX 77056

(Daikin's products are subject to continuous improvements. Daikin reserves the right to modify product design, specifications and information in this data sheet without notice and without incurring any obligations)



Submittal Data Sheet

2.0-Ton Wall Mounted Unit Cooling Only

FTK24NMVJURK24NMVJU

2.0 Ton Cooling Only Split System - Server Room

FEATURES

- IR controller included
- Titanium apatite photocatalytic air purification filter (option)
- Hot start technology
- Auto-restart (after power failure)

BENEFITS

- Quiet operation
- Low ambient cooling operation down to -4° F with field setting and wind baffle (KPW063A4)
- Operating Range - Cooling (50° - 114.8°)
- 12 year limited parts and compressor warranty with online registration
- 5 Year limited parts warranty for commercial applications

INDOOR UNIT



OUTDOOR UNIT



NOTES

- Requires Adaptor KRP980B2 for use with a wired controller.



Submittal Data Sheet

2.0-Ton Wall Mounted Unit Cooling Only

FTK24NMVJURK24NMVJU

SYSTEM PERFORMANCE

Indoor Unit Model No.	FTK24NMVJU	Indoor Unit Name:	18 seer ac ductless id 2 ton
Outdoor Unit Model No.	RK24NMVJU	Outdoor Unit Name:	18 SEER, AC, Ductless ODU, 2 Ton
Rated Cooling Capacity (Btu/hr):	21,200	Rated Cooling Conditions:	Indoor (°F DB/WB): 80 / 67 Ambient (°F DB/WB): 95 / 75
Sensible Capacity (Btu/hr):	15,760	Rated Piping Length(ft):	25
Max/Min Cooling Capacity (Btu/hr):	24,000 / 5,500	Rated Height Difference (ft):	0.00
Cooling Input Power (kW):	1.700		
SEER (Non-Ducted/Ducted):	18.00 /		
EER (Non-Ducted/Ducted):	12.50 /		

SYSTEM DETAILS

Refrigerant Type:	R-410A	Cooling Operation Range (°F DB):	50 - 115
Holding Refrigerant Charge (lbs):	3.20	Heating Operation Range (°F WB):	-
Additional Charge (lb/ft):	0.21	Max. Pipe Length (Vertical) (ft):	66
Pre-charge Piping (Length) (ft):	33	Cooling Range w/Baffle (°F DB):	-4 - 115
Max. Pipe Length (Total) (ft):	98	Heating Range w/Baffle (°F WB):	-
Max Height Separation (Ind to Ind ft):	0		

Submittal Data Sheet

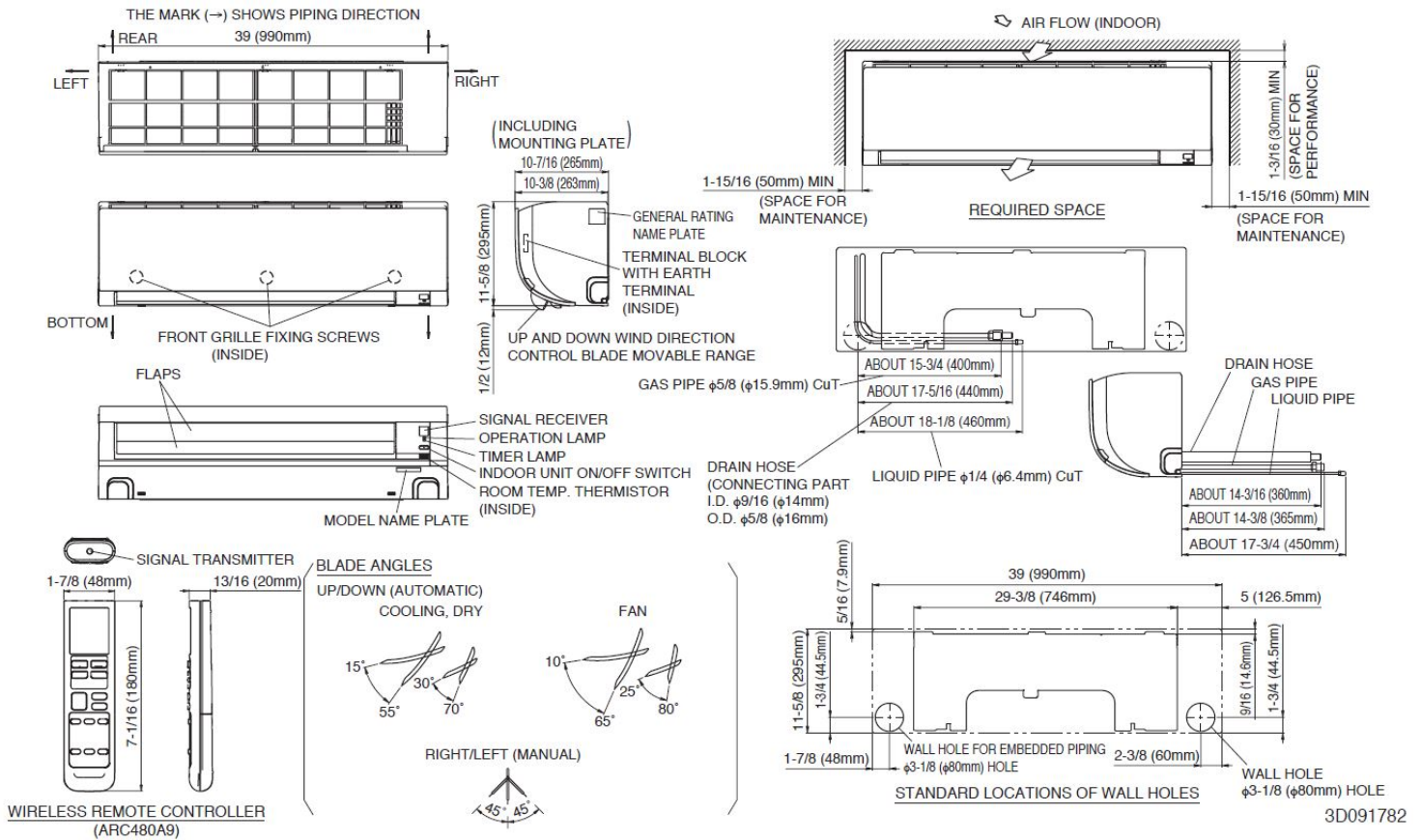
2.0-Ton Wall Mounted Unit Cooling Only

FTK24NMVJURK24NMVJU

INDOOR UNIT DETAILS

Power Supply (V/Hz/Ph):	208-230 / 60 / 1	Airflow Rate (H/M/L/SL) (CFM):	713/579/512/403
Power Supply Connections:	See Outdoor Unit for Electrical Specs	Moisture Removal (Gal/hr):	1.2
Min. Circuit Amps MCA (A):		Gas Pipe Connection (inch):	5/8
Max Overcurrent Protection (MOP) (A):		Liquid Pipe Connection (inch):	1/4
Dimensions (HxWxD) (in):	11-5/8 x 39 x 10-3/8	Condensate Connection (inch):	5/8
Net Weight (lb):	27	Sound Pressure (H/M/L/SL) (dBA):	53/45/39/34
Ext. Static Pressure (Rated/Max) (inWg):	/	Sound Power Level (dBA):	

DIMENSIONAL DRAWING - INDOOR UNIT





Submittal Data Sheet

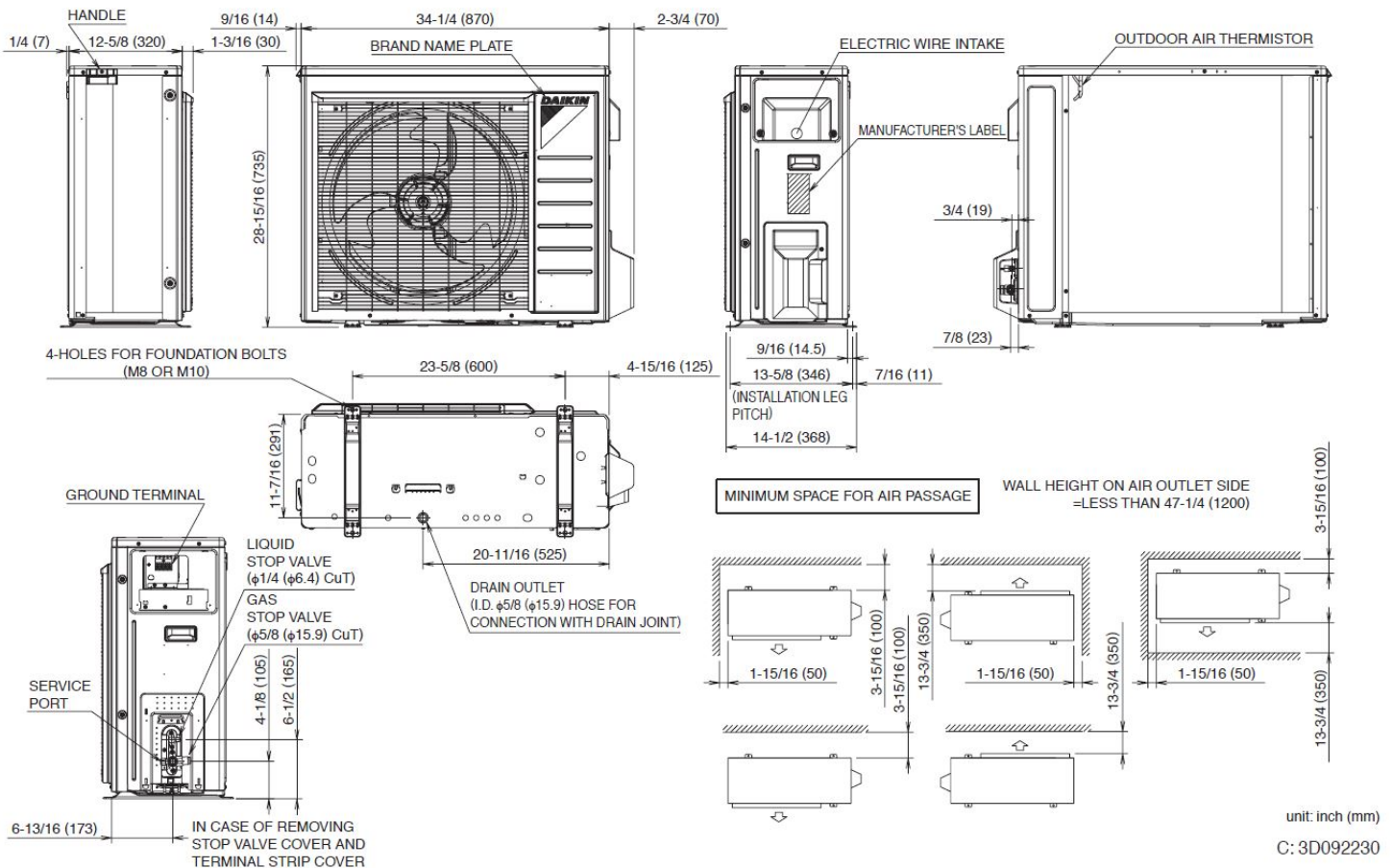
2.0-Ton Wall Mounted Unit Cooling Only

FTK24NMVJURK24NMVJU

OUTDOOR UNIT DETAILS

Power Supply (V/Hz/Ph):	208-230 / 60 / 1	Compressor Stage:	
Power Supply Connections:	L1, L2, Ground	Capacity Control Range (%):	-
Min. Circuit Amps MCA (A):	18.3	Airflow Rate (H) (CFM):	2101
Max Overcurrent Protection (MOP) (A):	20	Gas Pipe Connection (inch):	5/8
Max Starting Current MSC(A):		Liquid Pipe Connection (inch):	1/4
Rated Load Amps RLA(A):		Sound Pressure (H) (dBA):	55
Dimensions (HxWxD) (in):	28-15/16 x 34-1/4 x 12-5/8	Sound Power Level (dBA):	
Net Weight (lb):	108		

DIMENSIONAL DRAWING - OUTDOOR UNIT



unit: inch (mm)
C: 3D092230

Daikin North America LLC, 5151 San Felipe, Suite 500, Houston, TX, 77056

Daikin City Generated Submittal Data

www.daikinac.com www.daikincomfort.com

(Daikin's products are subject to continuous improvements. Daikin reserves the right to modify product design, specifications and information in this data sheet without notice and without incurring any obligations)

Submittal Date: 9/21/2017 11:02:35 AM

Page 4 of 4