

O'Neill Walsh Community Builders

Submittal Form

OWCB

AHSC

(Project)

Submittal No. 001

Description: HVAC Fans

Date: 10/27/17 Return By: 11/10/17

Division: 23

Section: 23 34 90

Andersen

Subcontract/Supplier:

The review by O'Neill Walsh Community Builders ("OWCB") of the above Submittal shall not relieve Subcontractor/Supplier from any of its obligations under the agreement with OWCB nor give rise to any claim in favor of the Subcontractor/Supplier or third parties against OWCB or Owner.

By: Logan Bright

O'Neill Walsh Community Builders

Notes:

ARCHITECT

Notes:

ENGINEER

Revise and Resubmit.

Checking is only for general conformance with the design concept of the project and general compliance with the information given in the contact documents. Any action shown is subject to the requirements of the plans and specifications. Contractor is responsible for: Dimensions, which shall be confirmed and correlated at the job site; fabrication processes and techniques of construction; coordination of his work with that of all other trades; and the satisfactory performance of his work.

MFIA, Inc. Consulting Engineers

By: Takako Baker, Date:11/11/17

Notes:



*"Your Green Heating & Cooling Professionals
Dedicated to Serving You and Your Community."*

HVAC Submittals

**Yakima Clinic
9005 SE Foster Rd.
Portland, OR 97203**

**Submitted To:
O'Neill / Walsh Community Builders
2905 SW First Ave
Portland, OR 97201**

**Submitted By:
Andersen Mechanical
16285 SW 85th Ave, Suite 410
Tigard, OR 97224**

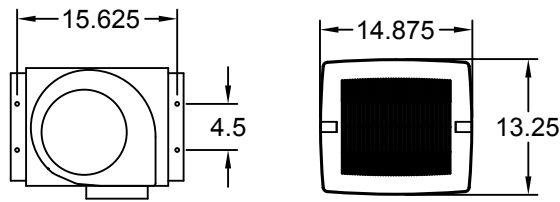
HVAC Submittal Index

<u>23 05 00</u>	<u>Common HVAC Materials and Methods</u>
<u>23 05 48</u>	<u>Mechanical Sound and Vibration Control</u>
<u>23 07 00</u>	<u>HVAC Insulation</u>
<u>23 23 00</u>	<u>Refrigerant Piping System</u>
<u>23 30 00</u>	<u>Air Distribution</u>
<u>23 34 00</u>	<u>HVAC Fans</u>
<u>23 80 00</u>	<u>Terminal HVAC Equipment</u>



23_34_00

HVAC Fans



Model: SP-B200

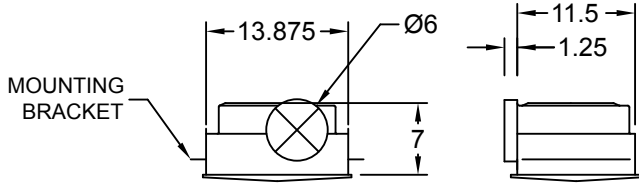
Ceiling Exhaust Fan

Standard Construction Features:

- Corrosion resistant galvanized steel scroll and housing - White designer non-yellowing grille - Round outlet duct collar with integral backdraft damper - Single inlet forward curved wheel - Plug type disconnect - Adjustable mounting brackets

Selected Options & Accessories:

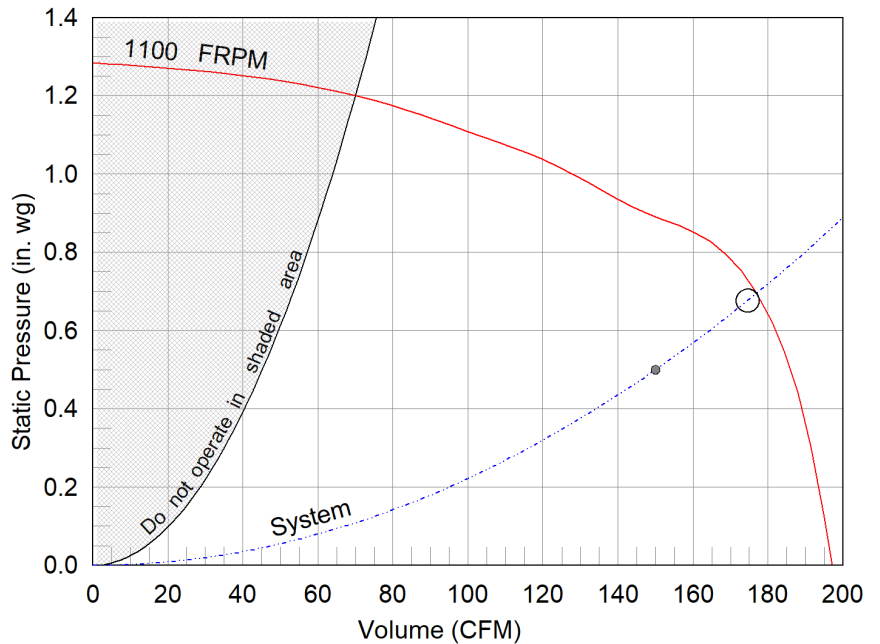
Motor with Thermal Overload
 Motor with CSA Approval
 Motor with 40 Degree C Ambient Temperature
 Motor rated for continuous use
 UL/cUL 507 Listed - Electric Fan
 Designer Grille
 Round Duct Connection
 Polypropylene Wheel Material



Dimensional	
Quantity	1
Weight w/o Acc's (lb)	10
Weight w/ Acc's (lb)	10

Performance	
Requested Volume (CFM)	150
Actual Volume (CFM)	175
External SP (in. wg)	0.5
Total External SP (in. wg)	0.677
Fan RPM	1100
* FLA (A)	2.2
Elevation (ft)	108
Airstream Temp.(F)	70
Air Density (lb/ft3)	0.075
Sones	5.0

Motor	
Motor Mounted	Yes
** Input Watts (W)	172
Voltage/Cycle/Phase	115/60/1
Enclosure	ODP



- Operating point at Total External SP
- Operating point at External SP
- Fan curve
- - - System curve

Notes:

All dimensions shown are in units of in.
 *FLA is approximate and will vary slightly with the motor.
 Sones - calculated using AMCA 301 at 5 ft
 ** Wattage is shown at free air.
 ** Wattage is approximate and may vary between motors.

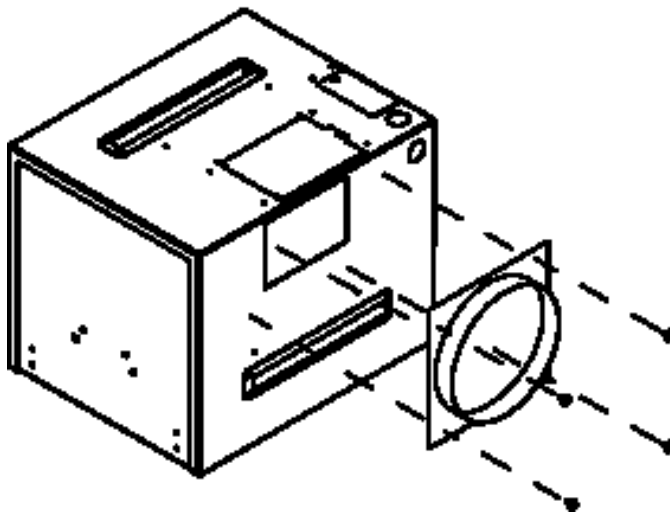


Round Duct Connector

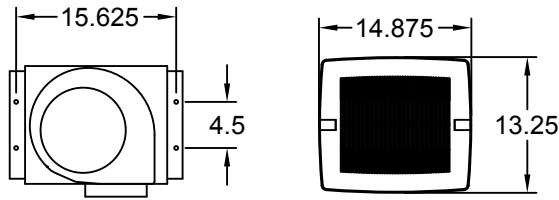
Model: RDC

Standard Construction Features:

-Constructed of galvanized steel - Replaces the square discharge duct connector and damper using the existing mounting holes



Notes: All dimensions shown are in units of in.



Model: SP-B110

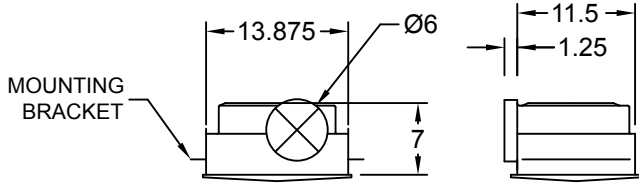
Ceiling Exhaust Fan

Standard Construction Features:

- Corrosion resistant galvanized steel scroll and housing - White designer non-yellowing grille - Round outlet duct collar with integral backdraft damper - Single inlet forward curved wheel - Plug type disconnect - Adjustable mounting brackets

Selected Options & Accessories:

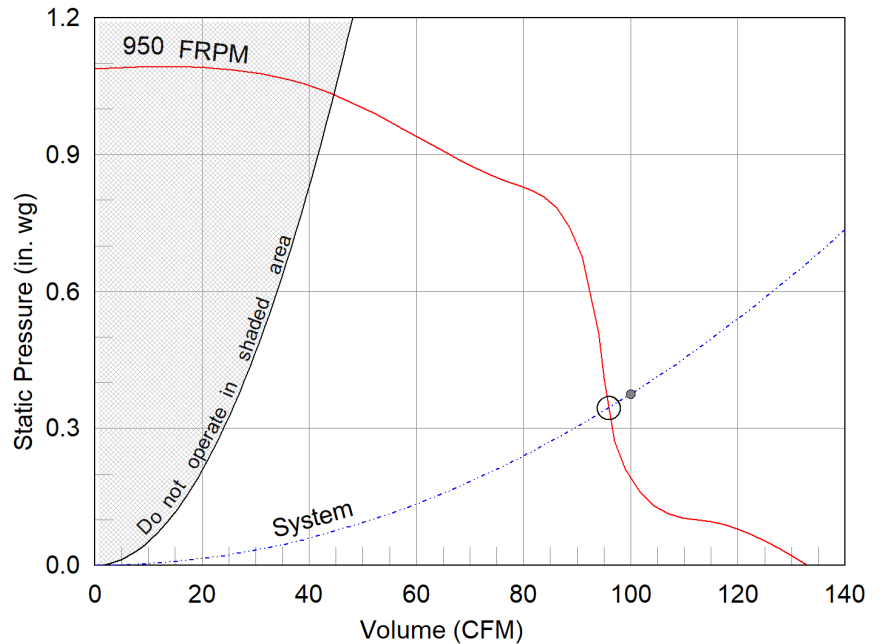
Motor with Thermal Overload
 Motor with CSA Approval
 Motor with 40 Degree C Ambient Temperature
 Motor rated for continuous use
 UL/cUL 507 Listed - Electric Fan
 Designer Grille
 Round Duct Connection
 Polypropylene Wheel Material



Dimensional	
Quantity	1
Weight w/o Acc's (lb)	10
Weight w/ Acc's (lb)	10

Performance	
Requested Volume (CFM)	100
Actual Volume (CFM)	96
External SP (in. wg)	0.375
Total External SP (in. wg)	0.345
Fan RPM	950
* FLA (A)	1.14
Elevation (ft)	108
Airstream Temp.(F)	70
Air Density (lb/ft3)	0.075
Sones	2.0

Motor	
Motor Mounted	Yes
** Input Watts (W)	80
Voltage/Cycle/Phase	115/60/1
Enclosure	ODP



- Operating point at Total External SP
- Operating point at External SP
- Fan curve
- - - System curve

Notes:

All dimensions shown are in units of in.
 *FLA is approximate and will vary slightly with the motor.
 Sones - calculated using AMCA 301 at 5 ft
 ** Wattage is shown at free air.
 ** Wattage is approximate and may vary between motors.

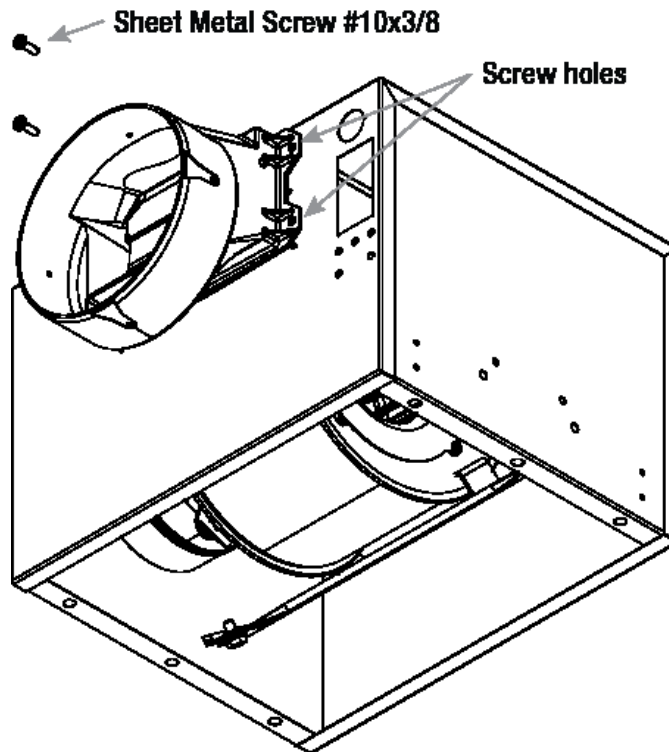


Round Duct Connector

Model: RDC

Standard Construction Features:

-Constructed of Polypropylene - Replaces the square discharge duct connector and damper using the existing mounting holes



Notes: All dimensions shown are in units of in.

Model: SP-A390

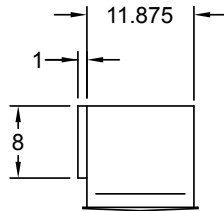
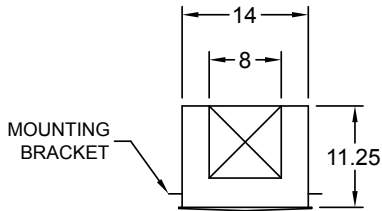
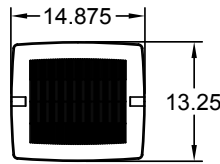
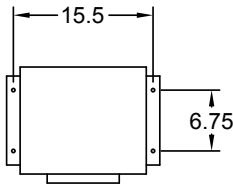
Ceiling Exhaust Fan

Standard Construction Features:

- Corrosion resistant galvanized steel scroll and housing
- Sound absorbing insulation
- White designer non-yellowing grille
- Rectangular outlet duct collar with integral spring loaded backdraft damper
- Double inlet forward curved wheel
- Plug type disconnect
- Adjustable mounting brackets
- Field rotatable discharge

Selected Options & Accessories:

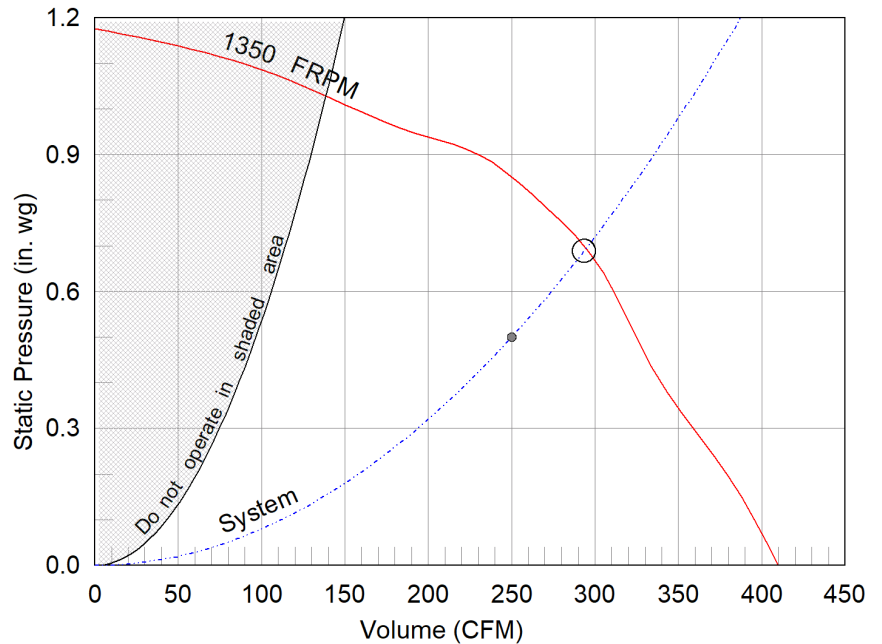
- Motor with Thermal Overload
- Motor with CSA Approval
- Motor with 40 Degree C Ambient Temperature
- Motor rated for continuous use
- UL/cUL 507 Listed - Electric Fan
- Designer Grille
- Polypropylene Wheel Material



Dimensional	
Quantity	1
Weight w/o Acc's (lb)	24
Weight w/ Acc's (lb)	24

Performance	
Requested Volume (CFM)	250
Actual Volume (CFM)	293
External SP (in. wg)	0.5
Total External SP (in. wg)	0.689
Fan RPM	1350
* FLA (A)	1.34
Elevation (ft)	108
Airstream Temp.(F)	70
Air Density (lb/ft3)	0.075
Sones	5.5

Motor	
Motor Mounted	Yes
** Input Watts (W)	135
Voltage/Cycle/Phase	115/60/1
Enclosure	ODP

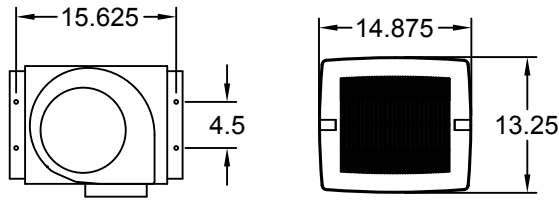


- Operating point at Total External SP
- Operating point at External SP
- Fan curve
- - - System curve

Notes:

- All dimensions shown are in units of in.
- *FLA is approximate and will vary slightly with the motor.
- Sones - calculated using AMCA 301 at 5 ft
- ** Wattage is shown at free air.
- ** Wattage is approximate and may vary between motors.





Model: SP-B200

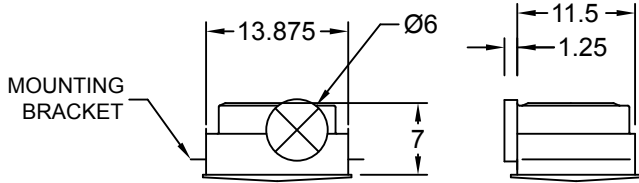
Ceiling Exhaust Fan

Standard Construction Features:

- Corrosion resistant galvanized steel scroll and housing - White designer non-yellowing grille - Round outlet duct collar with integral backdraft damper - Single inlet forward curved wheel - Plug type disconnect - Adjustable mounting brackets

Selected Options & Accessories:

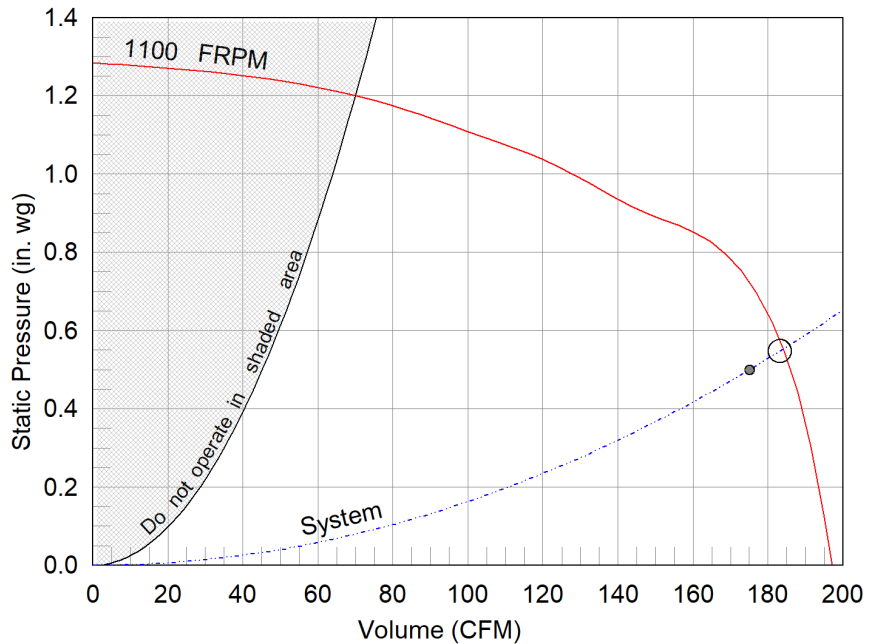
Motor with Thermal Overload
 Motor with CSA Approval
 Motor with 40 Degree C Ambient Temperature
 Motor rated for continuous use
 UL/cUL 507 Listed - Electric Fan
 Designer Grille
 Round Duct Connection
 Polypropylene Wheel Material



Dimensional	
Quantity	1
Weight w/o Acc's (lb)	10
Weight w/ Acc's (lb)	10

Performance	
Requested Volume (CFM)	175
Actual Volume (CFM)	183
External SP (in. wg)	0.5
Total External SP (in. wg)	0.547
Fan RPM	1100
* FLA (A)	2.2
Elevation (ft)	108
Airstream Temp.(F)	70
Air Density (lb/ft3)	0.075
Sones	5.0

Motor	
Motor Mounted	Yes
** Input Watts (W)	172
Voltage/Cycle/Phase	115/60/1
Enclosure	ODP



- Operating point at Total External SP
- Operating point at External SP
- Fan curve
- - - System curve

Notes:

All dimensions shown are in units of in.
 *FLA is approximate and will vary slightly with the motor.
 Sones - calculated using AMCA 301 at 5 ft
 ** Wattage is shown at free air.
 ** Wattage is approximate and may vary between motors.

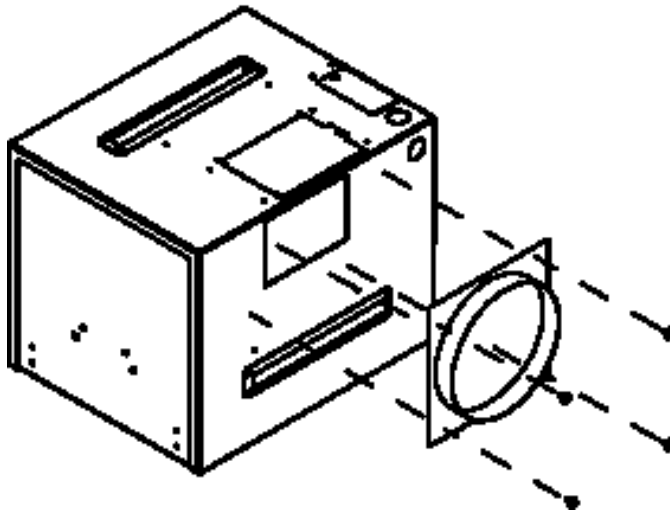


Round Duct Connector

Model: RDC

Standard Construction Features:

-Constructed of galvanized steel - Replaces the square discharge duct connector and damper using the existing mounting holes



Notes: All dimensions shown are in units of in.