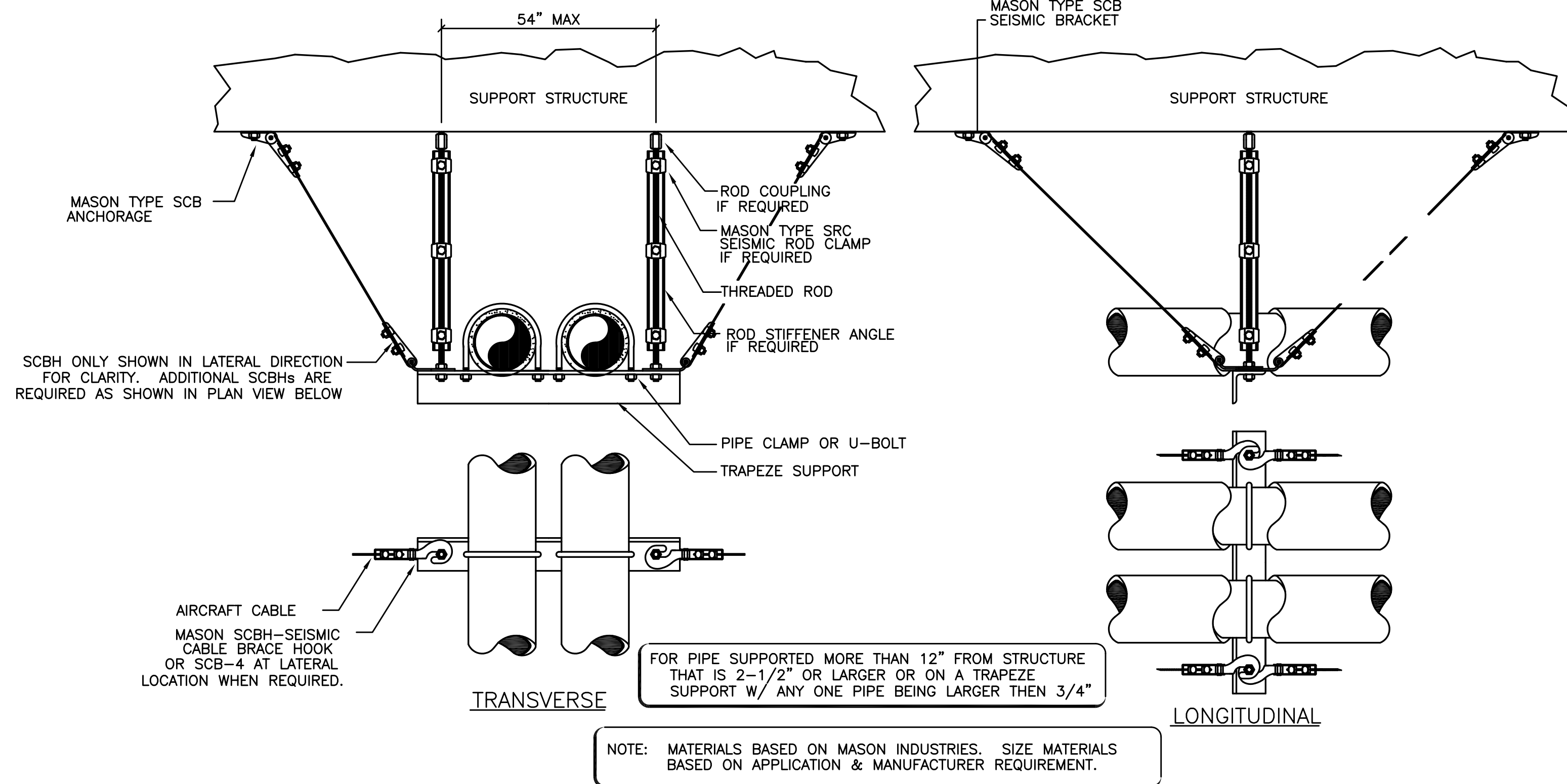
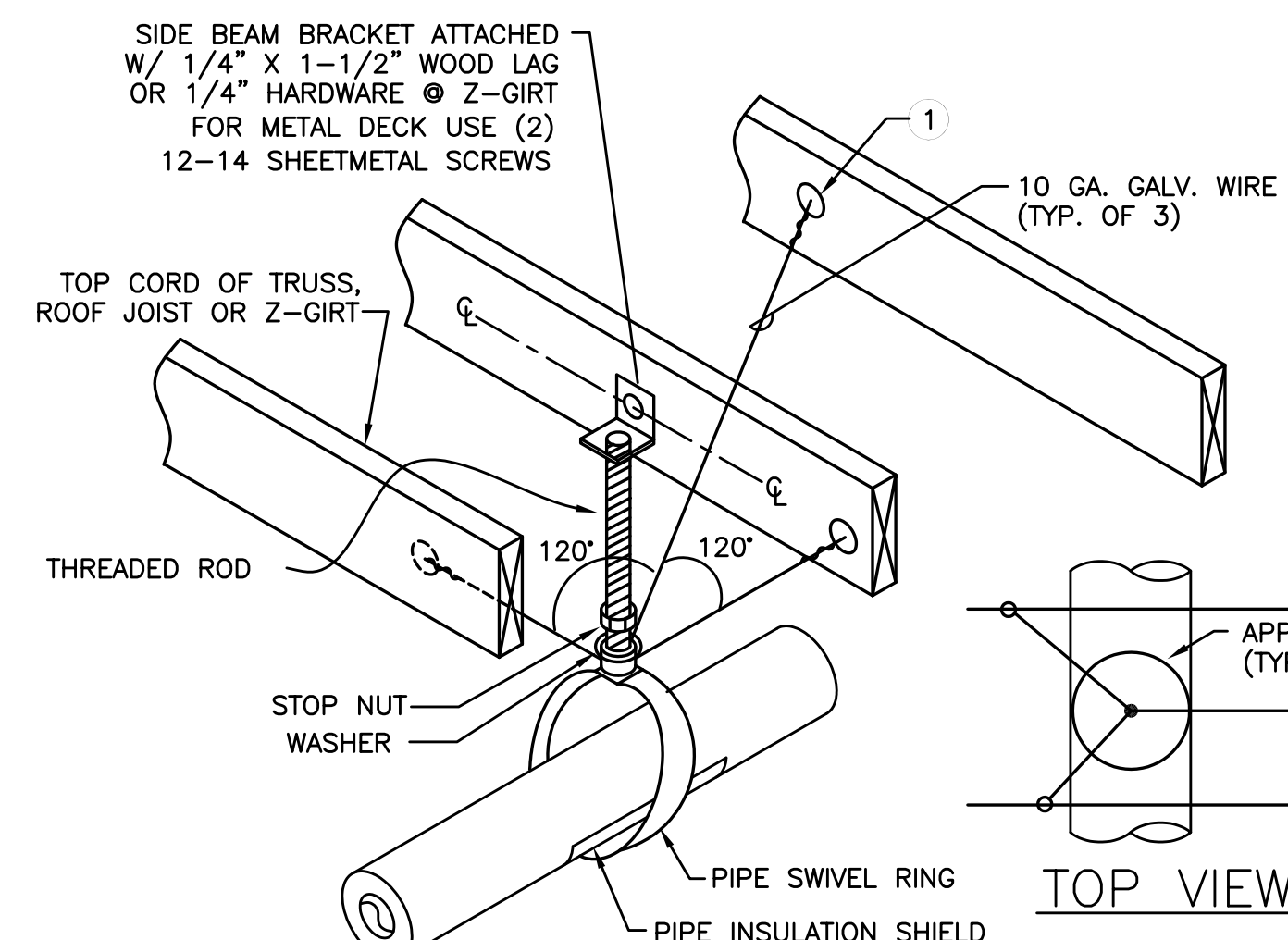


NOTE: LOCATE SUPPORT & SIESMIC TO MAINTAIN UNHINDERED ACCESS FOR MAINTENANCE OF UNIT.

1 VRV DUCTED FAN COIL (FC) M6.1 SCALE: DETAIL



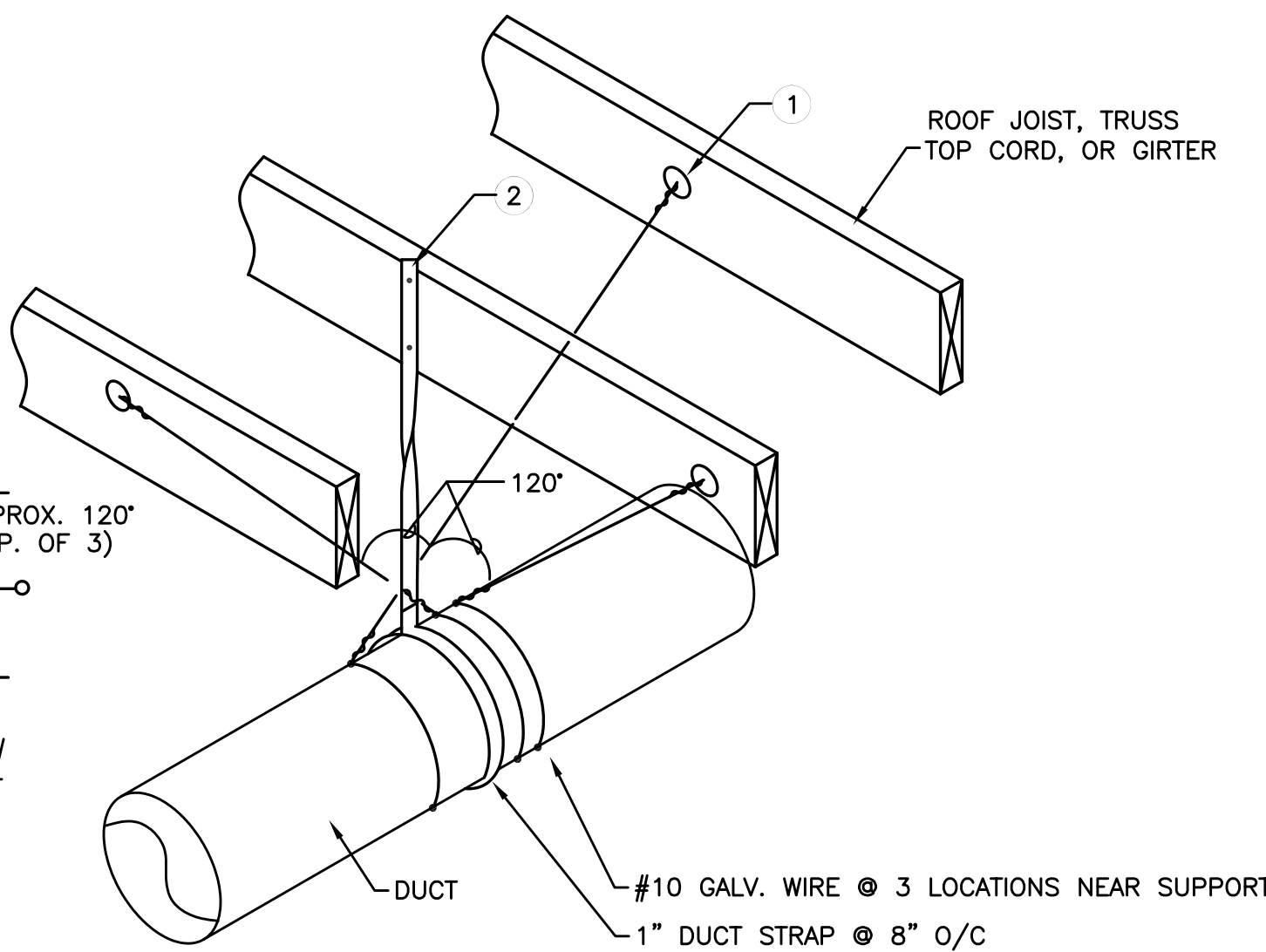
2 SEISMIC PIPE SUPPORT M6.1 SCALE: DETAIL



3/M6.02 NOTES

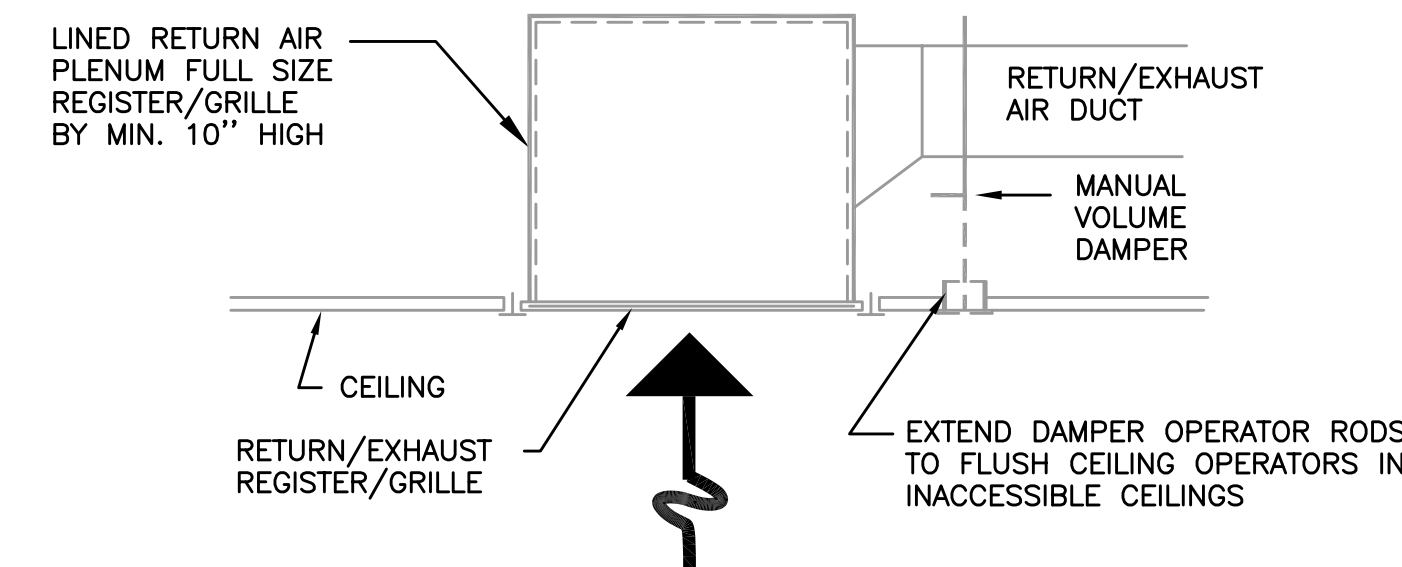
- 1 - 1/4" GALV. THREADED EYE BOLT @ CENTER OF WOOD MEMBER (TYP. OF 3). FOR 2 GIRT USE MACHINE THREAD EYE BOLT W/ JAMB NUT & 1/4" WASHER @ EACH SIDE OF GIRT USE 12 SHEETMETAL SCREWS & 16 GA MIN. 16 GA. MIN STRUT ANGLE CLIP
- FOR SINGLE 1-1/2" TO 3" STEEL LINES
- FOR SINGLE 2" COPPER LINES

3 PIPE SUPPORT M6.1 SCALE: DETAIL



- FOR SHEETMETAL DUCTS 11" TO 27" IN DIAMETER & ALL SQUARE OR RECTANGULAR DUCTS (STRAP ALONE IS SUFFICIENT FOR DUCTS SMALLER THAN 11" IN DIAMETER)
- STRAP INTERVAL MAY BE DECREASED (LESS THAN 96" O/C TO REDUCE THE NEED FOR WIRE TIES AS DETAILED. CONSULT ENGINEER OR SMACNA STANDARDS

4 DUCT SUPPORT M6.1 SCALE: DETAIL



5 RA GRILLE DETAILS M6.1 SCALE: DETAIL

METIA Consulting Engineers
2007 S.E. Ash St.
Portland, OR 97214
PHN: (503) 234-0548
FAX: (503) 234-0677
WWW.METIA-ENG.COM
CONTACT: TAKAKO BAKER

HOLST

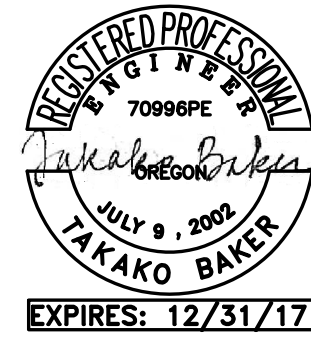
110 SE 8TH AVE.
PORTLAND, OR
97214

HOLSTARC.COM

YAKIMA VALLEY CLINIC TENANT IMPROVEMENT

9035 SE FOSTER RD
PORTLAND, OR 97266

JOB NO. 17001



PERMIT SET

05.30.2017

issue: date:

revision: date:

title:

MECHANICAL DETAILS

sheet:

M6.1

© 2016 HOLST ARCHITECTURE pc