

MFA INC. Consulting Engineers
2007 S.E. Ash St.
Portland, OR 97214
PHN: (503) 234-0548
FAX: (503) 234-0877
CONTACT: TAKAKO BAKER

PERMIT SET

07.22.2016	date:
100% SD	10.15.15
50% DD	12.09.15
100% DD	02.05.16
50% CD	03.30.16
75% CD	04.27.16
PERMIT SET	07.22.16
revision:	date:
1 PERMIT REV (ADD 1)	01.24.17
2 PERMIT REV 2	02.09.17
3 PERMIT REV 3	03.08.17
4 CONST SET REV 4	03.31.17

title:
MECHANICAL
KITCHEN HOOD
DETAILS AND
SCHEDULE

sheet:

M6.03

REVISIONS	
DESCRIPTION	DATE

CAPTIVE
 OREGON OFFICE
 2702 NE 114th Ave, Suite 2, Vancouver, WA, 98664 PHONE: (360) 828-5418 FAX: (360) 828-5418 EMAIL: rkg@captivewaire.com www.captivewaire.com

AHSC
 PORTLAND, OR, 97202

DATE: 6/6/2016
DWG.#: 2674919

DRAWN BY: kcurtis
SCALE: 3/4" = 1'-0"
MASTER DRAWING

SHEET NO.
1

HOOD INFORMATION - Job#2674919

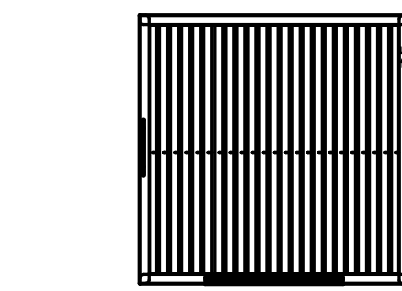
HOOD NO.	TAG	MODEL	LENGTH	MAX. COOKING TEMP.	EXHAUST PLENUM RISER(S)				HOOD CONSTRUCTION	HOOD CONFIG.			
					TOTAL EXH. CFM	WIDTH	LENG.	HEIGHT		DIA.	CFM	S.P.	END TO END
1		4824 ND-2	4' 0.00"	450 Deg.	700		4'	10'	700	-0.444'	430 SS Where Exposed	ALONE	ALONE

HOOD INFORMATION

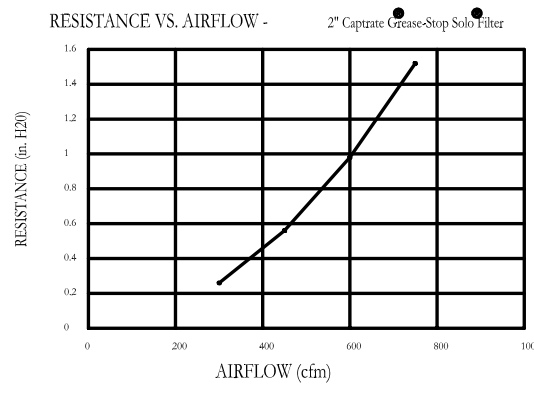
HOOD NO.	TAG	FILTER(S)				LIGHT(S)				UTILITY CABINET(S)				FIRE SYSTEM PIPING	HOOD HANGING WGT		
		TYPE	QTY.	HEIGHT	LENGTH	EFFICIENCY @ 9 MICRONS	QTY.	TYPE	WIRE GUARD	LOCATION	SIZE	FIRE SYSTEM	ELECTRICAL			SWITCHES	
1		Captrate Solo Filter	2	16'	16'	93% See Filter Spec.	2	L55 Series E26	ND	Right	12"x48"x24"	Ansul R102	1.5	SC-211110FP	1 Light 1 Fan	YES	343 LBS

HOOD OPTIONS

HOOD NO.	TAG	OPTION
1		BACKSPASH 80.00" High X 60.00" Long 430 SS Vertical
		LEFT QUARTER END PANEL 23" Top Width, 0" Bottom Width, 23" High 430 SS
		RIGHT QUARTER END PANEL 23" Top Width, 0" Bottom Width, 23" High 430 SS
		INSULATION FOR BACK OF HOOD



Captrate Grease-Stop Solo Filter



Filter Detail
CAPTRATE®

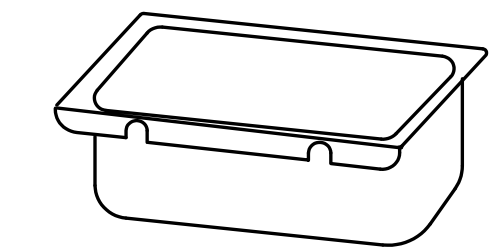
EXHAUST CFM=LENGTH OF HOOD X CFM/LIN.FT. (LOAD)
SUPPLY CFM=EXHAUST CFM X PERCENTAGE REQUIRED
TOTAL DUCT AREA=144 X CFM
DUCT LENGTH= TOTAL DUCT AREA / DUCT DEPTH

CALCULATIONS UTILIZED

- CAPTIVE-AIR HOODS ARE BUILT IN COMPLIANCE WITH:
 - NFPA #96
 - ETL SANITATION
 - B.O.C.A. #93-18
 - LOBO. 34416
 - IBOS PIF # ETL NO. 83137
 - ETL LISTED 3054804-001
 - LOS ANGELES #R98000
 - ETL IS LISTED TO ULC STANDARDS

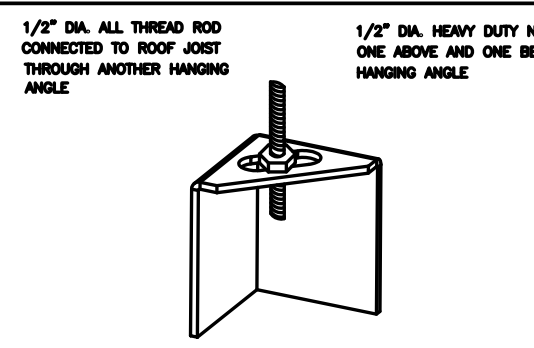


BUILDING CODES



Grease cup will be supported by 2 studs on the inside wall of the hood. The grease will drain through a concealed grease trough and into this removable cup.

1/2 Pint Grease Cup Detail



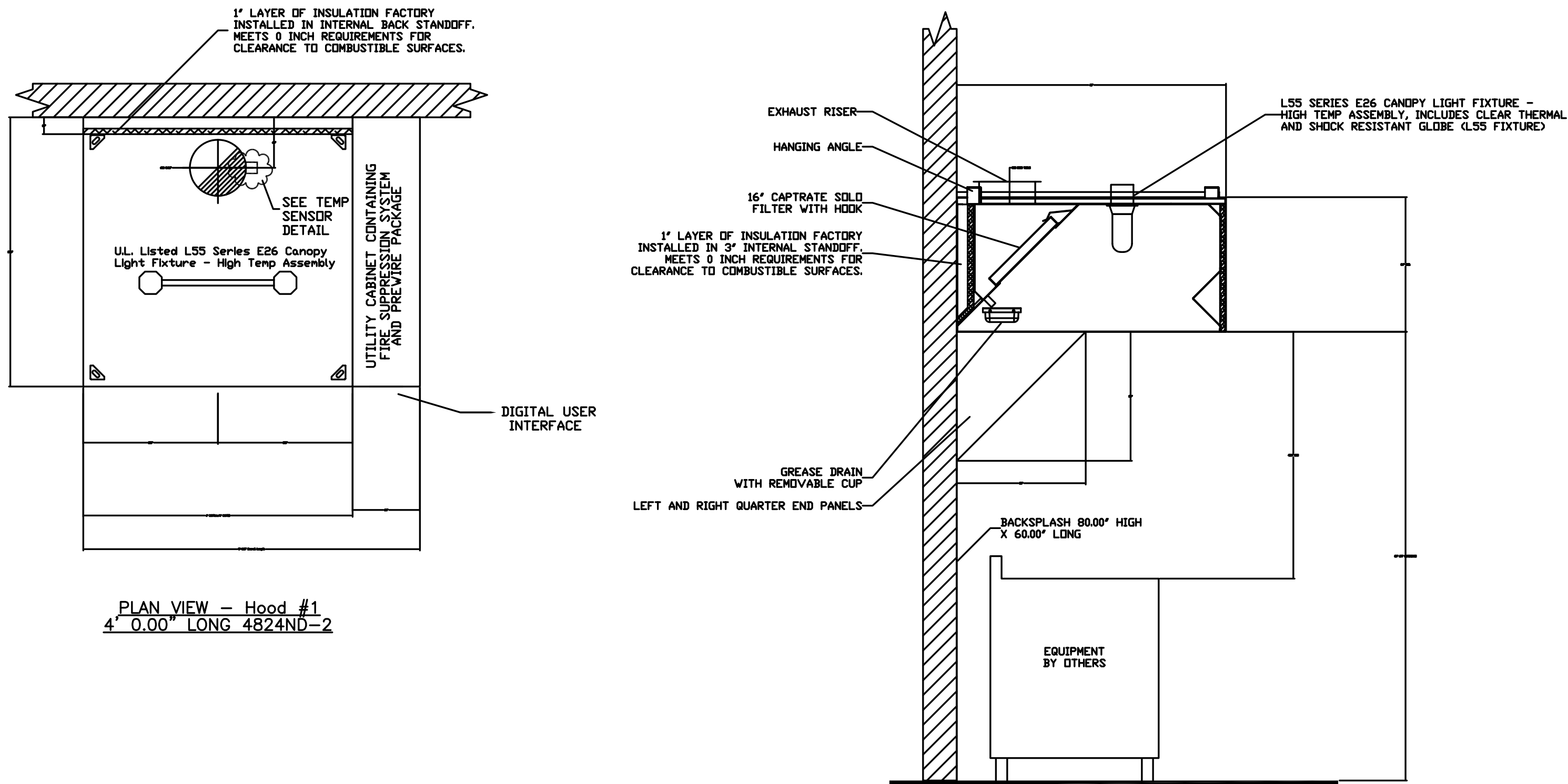
* ROD AND NUTS TO BE SUPPLIED BY INSTALLING CONTRACTOR. HANGING ANGLE IS PRE-PUNCHED AT FACTORY.

ND-2 HANGING ANGLE DETAIL

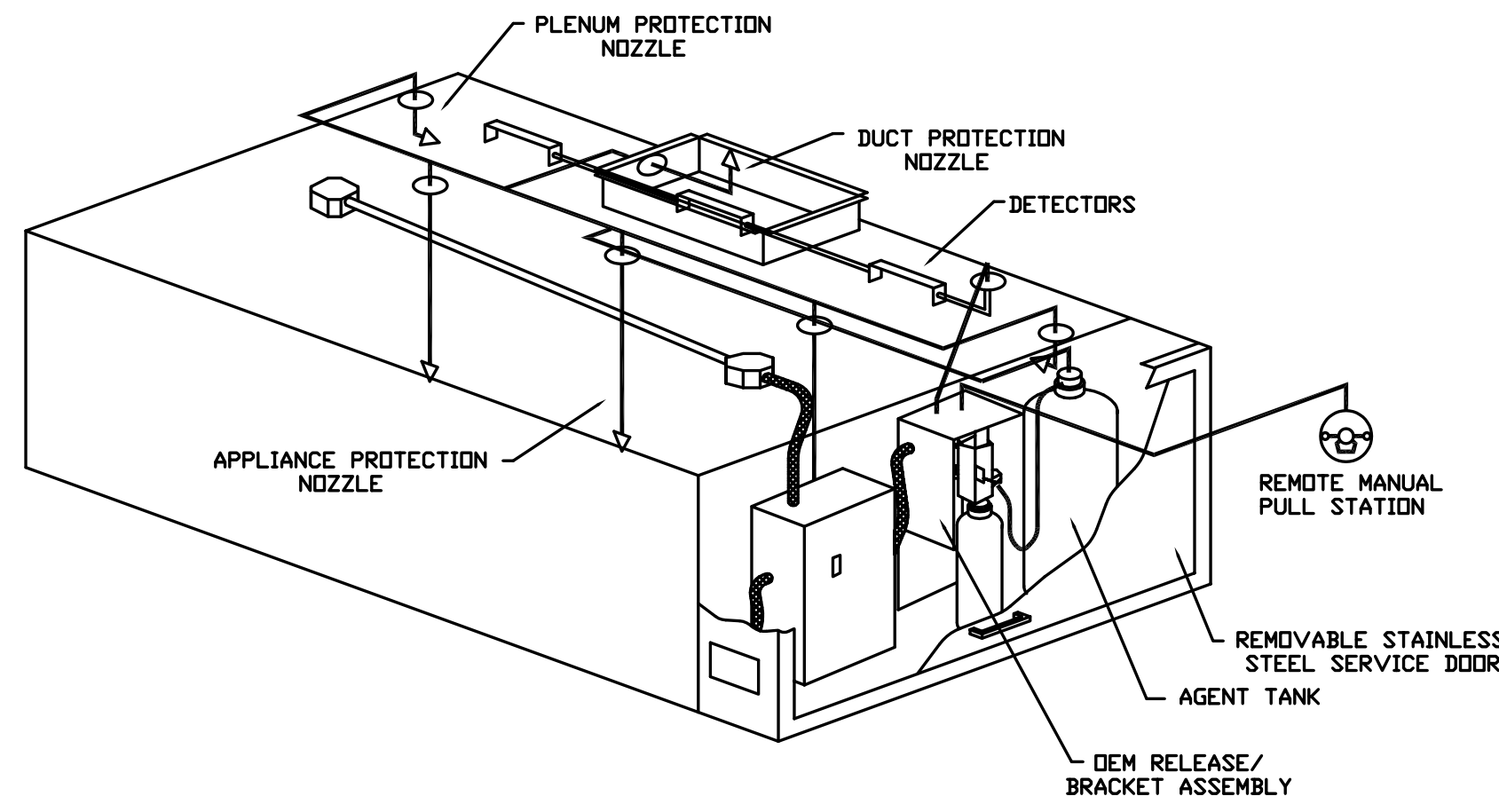
HANGING ANGLES WILL BE LOCATED IN THE FOLLOWING LOCATIONS FOR WALL CANOPIES

HOOD STYLE	DIM FROM REAR	DIM FROM FRONT (24" High Hood)	DIM FROM FRONT (30" High Hood)
Wall Exhaust Only	4.166"	2.25"	2.25"
Wall Exhaust With MUA		2.25"	2.25"
Back Shelf Exhaust Only	4.166"	2.25"	2.25"
Back Shelf Exhaust With MUA		2.25"	2.25"
Condensate	2.25"	2.25"	

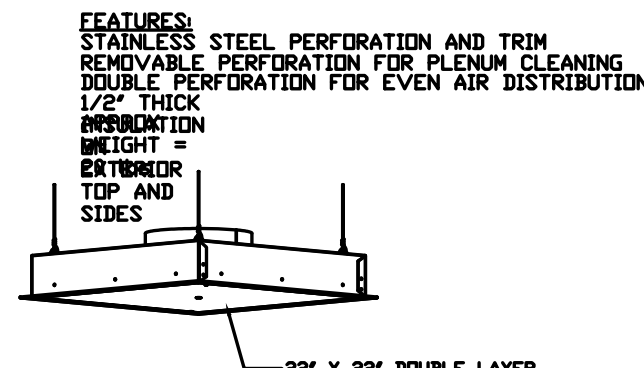
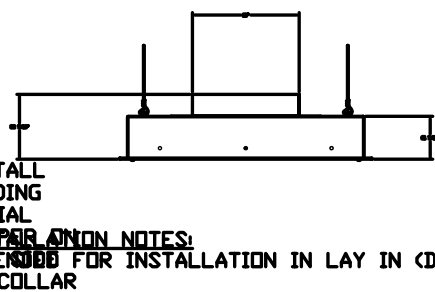
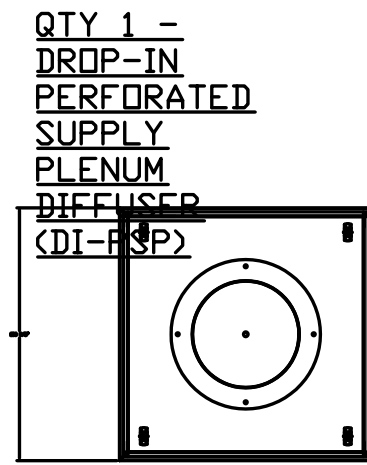
HANGING ANGLE LOCATIONS



SECTION VIEW - MODEL 4824ND-2 HOOD - #1



TYPICAL ANSUL R-102 SYSTEM LAYOUT



STEEL HANGING WIRE: MINIMUM 6 PLACES, DIAGONAL CORNERS (BY OTHERS)

CFM	T150	T100	T50
500	1.50"	3.00"	2.75"
750	1.50"	3.00"	2.75"
1000	1.50"	3.00"	2.75"
1250	1.50"	3.00"	2.75"
1500	1.50"	3.00"	2.75"
2000	1.50"	3.00"	2.75"

FOR QUESTIONS, CALL
KURT CURTIS: REGIONAL MANAGER
PHONE: (360) 828-5418
FAX: (360) 828-5418
EMAIL: kurt.curtis@captivewaire.com