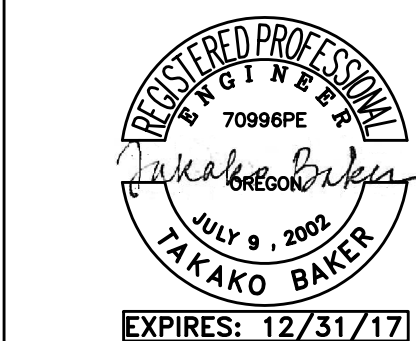


**ASIAN HEALTH & SERVICE CENTER**

SE 91ST AVE & SE FOSTER RD,  
PORTLAND OR 97266

JOB NO. 15043.00



**MFI** Consulting Engineers  
2007 S.E. Ash St.  
Portland, OR 97214  
PHN: (503) 234-0548  
FAX: (503) 234-0877  
INC. WWW.MFI-ENG.COM  
CONTACT: TAKAKO BAKER

**PERMIT SET**

07.22.2016

issue:	date:
100% SD	10.15.15
50% DD	12.09.15
100% DD	02.05.16
50% CD	03.30.16
75% CD	04.27.16
PERMIT SET	07.22.16

revision:	date:
1 PERMIT REV (ADD 1)	01.24.17
2 PERMIT REV 2	02.09.17
3 PERMIT REV 3	03.08.17
4 CONST SET REV 4	03.31.17

title:  
**SECOND FLOOR MECHANICAL PLAN**

sheet:

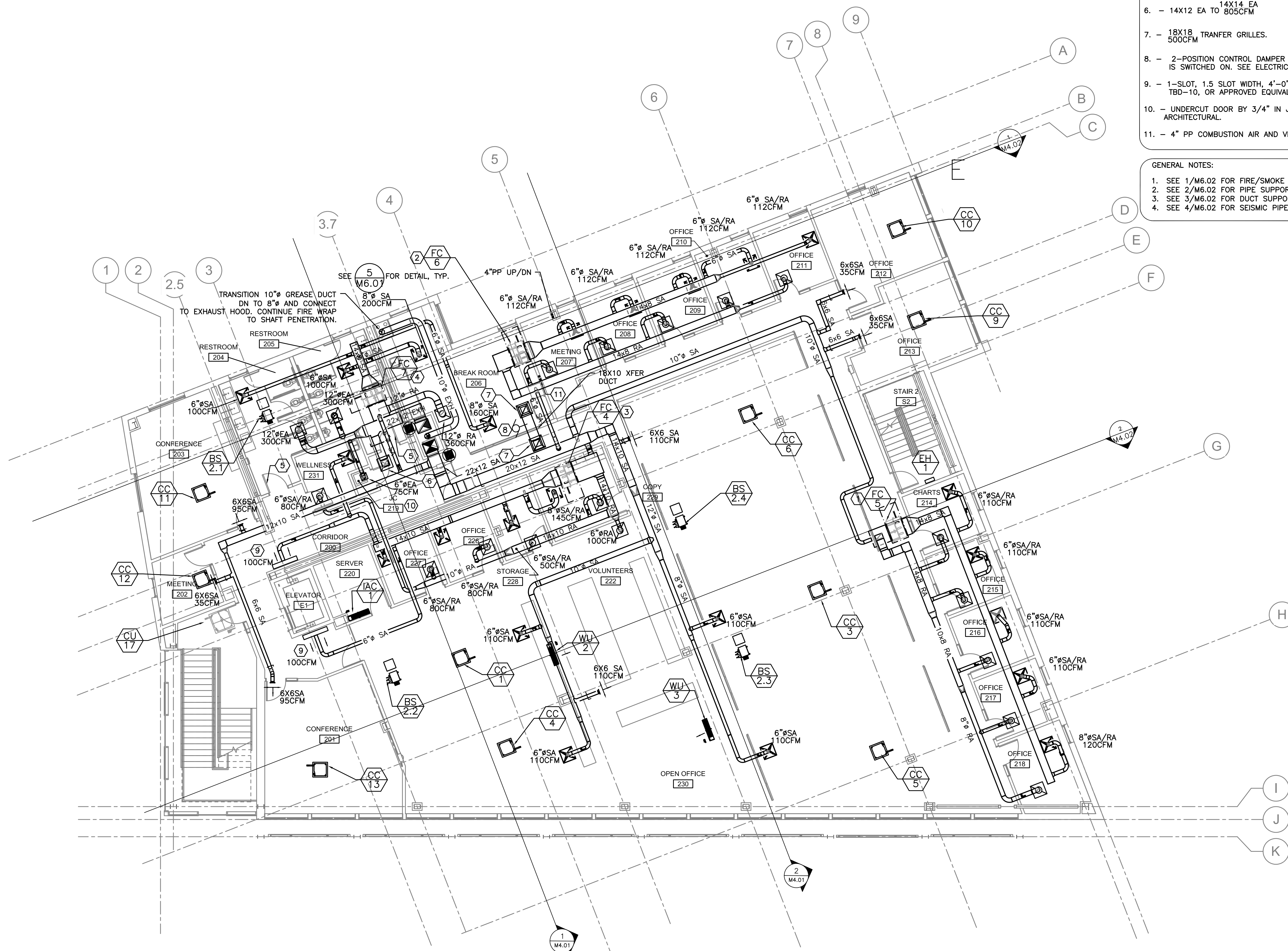
**M2.02**

**KEYED NOTES: #**

- BALANCE OSA TO FC-5 TO 95 CFM.
- BALANCE OSA TO FC-6 TO 95 CFM.
- BALANCE OSA TO FC-4 TO 150 CFM.
- BALANCE OSA TO FC-7 TO 200 CFM.
- UNDERCUT DOOR BY 1.5". COORDINATE WITH ARCHITECTURAL.
- 14X14 EA  
14X12 EA TO 805CFM
- 18X18 TRANSFER GRILLES.  
500CFM
- 2-POSITION CONTROL DAMPER TO OPEN WHEN KITCHEN EXHAUST FAN IS SWITCHED ON. SEE ELECTRICAL.
- 1-SLOT, 1.5 SLOT WIDTH, 4'-0" PLENUM SLOT DIFFUSER. TITUS MODEL TBD-10, OR APPROVED EQUIVALENT.
- UNDERCUT DOOR BY 3/4" IN JANITOR'S CLOSET. COORDINATE WITH ARCHITECTURAL.
- 4" PP COMBUSTION AIR AND VENT UP/DN IN WALL.

**GENERAL NOTES:**

- SEE 1/M6.02 FOR FIRE/SMOKE DAMPER INSTALLATION DETAIL.
- SEE 2/M6.02 FOR PIPE SUPPORT.
- SEE 3/M6.02 FOR DUCT SUPPORT.
- SEE 4/M6.02 FOR SEISMIC PIPE SUPPORT.



PROJECT NORTH  
**1** SECOND FLOOR MECHANICAL PLAN  
SCALE: 1/8"=1'-0"  
M2.02