





0.5"	0.25"	0.5"	0.5"	0.5"
915	1350	2400	2400	1115
4278	3565	-	-	3502
1/2	1/6	125 WATTS	125 WATTS	1/4
DDC	DDC/SWITCH	-	-	SWITCH
		PRESSURE SWITCH	PRESSURE SWITCH	HOOD SWITCH
18" BI	8" BI	-	-	12" BI
YES	YES	YES	YES	YES
		NONE	NONE	
100	50	-	-	85
10.2	8.5	-	-	7.0





EXHAUST FANS

MARK NUMBER		 5/05
TYPE	CABINET *	CEILING
SYSTEM	BOILER ROOM D108	HUB ROOM E209
CFM	500	200
TOTAL SP. (IN H2O)	0.4"	0.25"
RPM	1123	1500
TIP SPEED (FPM)	1856	2996
MOTOR HP/WATTS	131.55 WATTS	170.65 WATTS
CONTROLLED BY	THERMOSTAT	THERMOSTAT **
WHEEL TYPE	F.C.	F.C.
BACK DRAFT DAMPER	YES	YES
ISOLATION	YES	NO
DESIGN WEIGHT (LBS)	38	16
MAX. SONES	1.8	6

* - PROVIDE W/ SPEED CONTROL TO BE MOUNTED NEAR FAN FOR FINAL BALANCING

** - FAN TO OPERATE WHEN ROOM REACHES 80°F OR ABOVE

PING
 0
 30
 0
 0
 7
 "

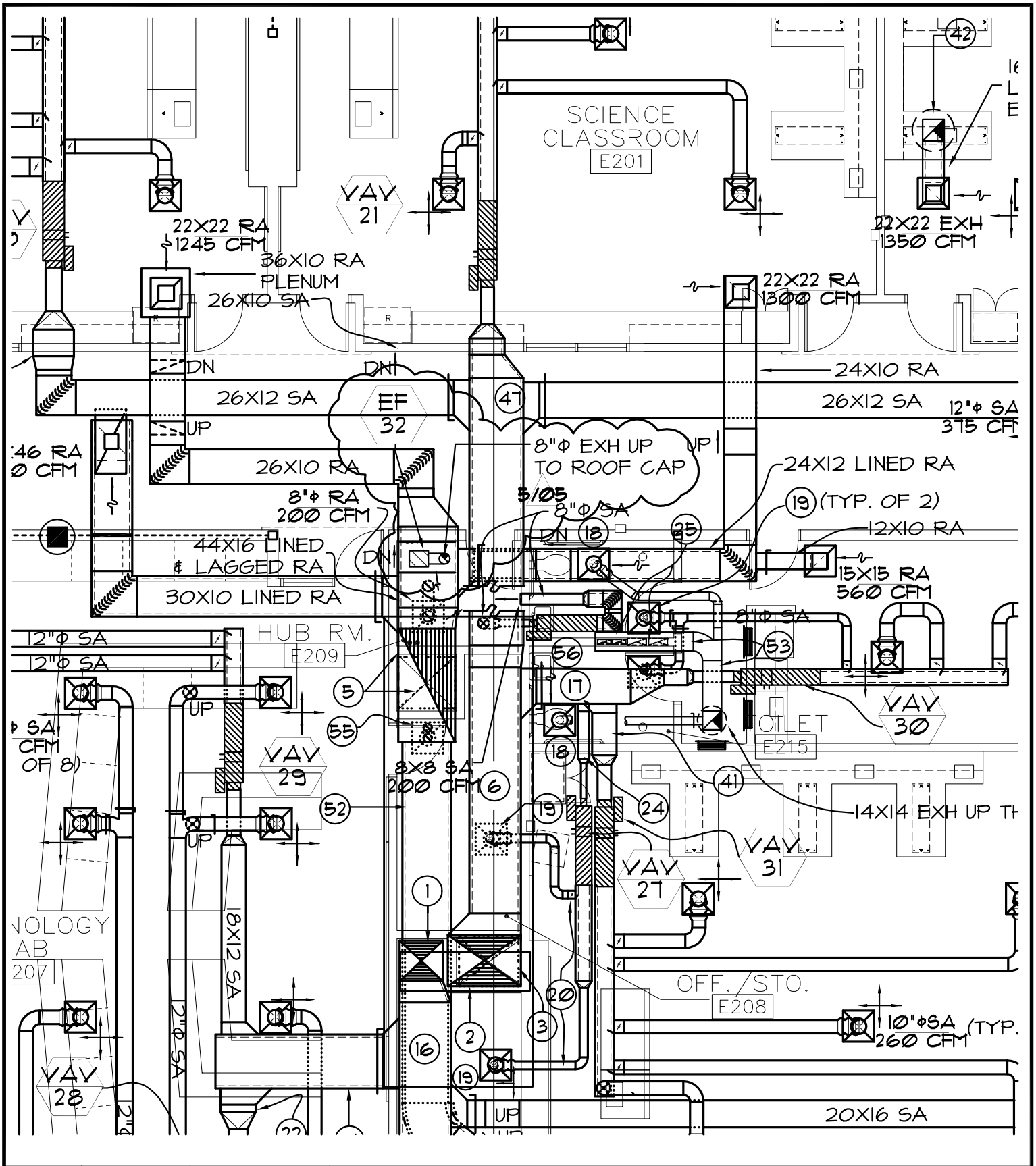
BY: ARJ	CHK'D: SWM	DATE: 5.03.05
NO	REVISION	DATE
	NEW EXH FAN	5.03.05
		
		
		

ROSEBURG H.S.

MECHANICAL SCHEDULES

MFIA INC.
 2007 S.E. ASH ST.
 PORTLAND OR. 97214 ph. 503-234-0548

JOB NO.
 SHEET NO.
REV-REF:M6.3



BY: ARJ	CHK'D: SWM	DATE: 5.03.05
NO	REVISION	DATE
5/05	NEW EXH FAN	5.03.05
△		
△		
△		

ROSEBURG H.S.
2ND FLR MECHANICAL PLAN AREA 'E'

MFIA INC.
2007 S.E. ASH ST.
PORTLAND OR. 97214 ph. 503-234-0548

JOB NO.
SHEET NO.
REV-REF:M2.6A