

phase	RECORD DRAWING
date	11/09/2015
revisions	
project #	11082

PLUMBING SCHEDULES
P6.00

SUMP PUMP

MARK NUMBER	SP 1
SYSTEM	ELEVATOR
TYPE	SUMP
FLOW RATE (GPM)	50
HEAD (FT H2O)	15
POWER (HP)	1/2 HP

WATER HEATER SCHEDULE

MARK NUMBER	WH 1A		WH 1B		WH 2A		WH 2B	
	CLASSROOM/OFFICE	KITCHEN/LOCKER	CLASSROOM/OFFICE	KITCHEN/LOCKER	CLASSROOM/OFFICE	KITCHEN/LOCKER	CLASSROOM/OFFICE	KITCHEN/LOCKER
SYSTEM	CLASSROOM/OFFICE		KITCHEN/LOCKER		CLASSROOM/OFFICE		KITCHEN/LOCKER	
FUEL	GAS		GAS		GAS		GAS	
INPUT (MBH)	150		199		150		199	
EFFICIENCY (MIN.)	94%		94%		94%		94%	
TANK SIZE (GAL)	100		100		100		100	
RECOVERY RATE* (GPH)	180		225		180		225	
DESIGN WEIGHT (LB)	1300		1300		1300		1300	

* (100°F DT)

MIXING VALVE

MARK NUMBER	MV-1	MV-2
WATER HEATER	1A/B	2A/B
MAX FLOW RATE GPM	45	35
MIN FLOW RATE GPM	0.5	0.5
CW (SIZE IN.)	1-1/4"	3/4"
HW (SIZE IN.)	1-1/4"	3/4"
TWW (SIZE IN.)	1-1/2"	1"

* - AT 20 PSI DROP MAX

DOMESTIC WATER PUMP

MARK NUMBER	RP 1	RP 2
SERVICE	WH-1A/B	WH-2A/B
TYPE	RECIRC.	RECIRC.
FLOW RATE (GPM)	3.25	2
HEAD (FT)	15	15
MOTOR HP	1/6	1/6
RPM	3450	3450
CONTROL	AQUASTAT & DDC	

PLUMBING CONNECTION SCHEDULE (KITCHEN)

MARK	FIXTURE	W	V	CW	HW	REMARKS
HS	HAND SINK	1-1/2"	1-1/2"	1/2"	1/2"	* 105°F HW W/ WALL CLEANOUT
KF	KITCHEN FAUCET	IDW	-	3/4"	3/4"	* 120°F HW
KS	KITCHEN SINK	2" GW	1-1/2"	3/4"	3/4"	* 120°F HW
KFF	KETTLE FILL FAUCET	-	-	1/2"	1/2"	* 120°F HW
PF	PREP FAUCET	-	-	1/2"	1/2"	* 120°F HW
PRF	PRE-RINSE FAUCET	-	-	1/2"	1/2"	* 120°F HW
COS	COMBI OVEN/STEAMER	IDW	-	3/4"	-	* FROM RP VALVE
DIS	DISPOSER	2" GW	1-1/2"	3/4"	3/4"	* 120°F F, ***
CCO	COMBI/CONVECTION OVEN	IDW	-	3/4"	-	* FROM RP VALVE
FS-2	FLOOR SINK	3" GW	V.L.	-	-	** PROVIDED BY PLUMBER
IM	ICE MAKER FILTER SYSTEM	-	-	3/4"	-	* RPBP, IDW TO FLOOR SINK
DW	DISHWASHER CONNECTION	3" V.L.	-	3/4"	-	* 110°F F, * SEE 6/P6.02
CB	COFFEE BREWER	-	-	1/2"	-	*
FW	FOOD WARMER	-	-	1/2"	-	* **

GW - GREASE WASTE V.L. - VENTED LINE IDW - INDIRECT WASTE
* EQUIPMENT SUPPLIED BY KITCHEN EQUIPMENT SUPPLIER OR OWNER. ** IN KITCHEN, SEE FOOD SERVICE DRAWINGS FOR TOP STYLE. INSTALL ALL FLUSH W/ FLOOR (NO RAISED LIP)
SEE FOOD SERVICE DWGS & SPECS. FOR CONNECTION SIZE, LOCATION & ROUGH-IN. MECHANICAL CONTRACTOR TO PROVIDE ALL TRAPS, STOPS AND OTHER REQUIRED ACCESSORIES *** SEE 5/P6.02
**** - ROUTE CW TIGHT TO WALL AFTER DROP & TO WARMER, UNLESS SHOWN OTHERWISE ON PLANS

PLUMBING CALCULATIONS - PARKROSE MIDDLE SCHOOL

FIXTURE TYPE	NUMBER OF FIXTURES	DOMESTIC WATER SERVICE				SANITARY WASTE SERVICE	
		WATER UNITS	TOTAL WSFU	TOTAL CW UNITS	TOTAL HW UNITS	DRAINAGE UNITS	TOTAL DFU
CLOTHES WASHER	3	4	12	9	9	3	9
DISHWASHER (INDEPENDENT DRAIN)	1	1.5	1.5	1.125	1.125	2	2
DRINKING FOUNTAIN WATER COOLER (GENERAL USE)	3	0.5	1.5	0	0	0.5	1.5
FOOD WASTE GRINDER (COMMERCIAL)	1	1.5	1.5	1.5	0	3	3
KITCHEN SINK (ONE 1-1/2" TRAP)	4	1.5	6	4.5	4.5	2	8
KITCHEN SINK (FOOD GRINDER)	1	1.5	1.5	1.125	1.125	2	2
KITCHEN SINK (DISHWASHER)	1	3	3	2.25	2.25	2	2
LAVATORY (SINGLE)	18	1	18	13.5	13.5	1	18
RECEPTOR (ELEVATOR WASTE)	1	0	0	0	0	100	100
RECEPTOR (INDIRECT WASTE)	58	-	-	-	-	1	58
SERVICE SINK (LAVATORY)	6	3	18	13.5	13.5	3	18
SHOWERS (STALL)	3	2	6	4.5	4.5	2	6
SHOWERS, GROUP (CONTINUOUS USE)	6	2	12	9	9	5	30
SINK GENERAL (1-1/2" TRAP)	76	1.5	114	85.5	85.5	3	228
URINAL (1/2 GPF, GENERAL USE)	13	4	52	52	0	2	26
WASHFOUNTAIN (1-1/2" TRAP)	10	4	40	40	0	2	20
WATER CLOSET (1.6 GPF FLUSHOMETER VALVE-GENERAL)	49	5	245	245	0	4	196
HOSE BIBB (FIRST ONE)	1	2.5	2.5	0	0	-	-
HOSE BIBB (EACH ADDITIONAL)	24	1	24	24	0	-	-
TOTAL	277	1	558.5	510.5	144	725.5	

GPM 130 3" WASTE SIZE 6"

PLUMBING CONNECTION SCHEDULE

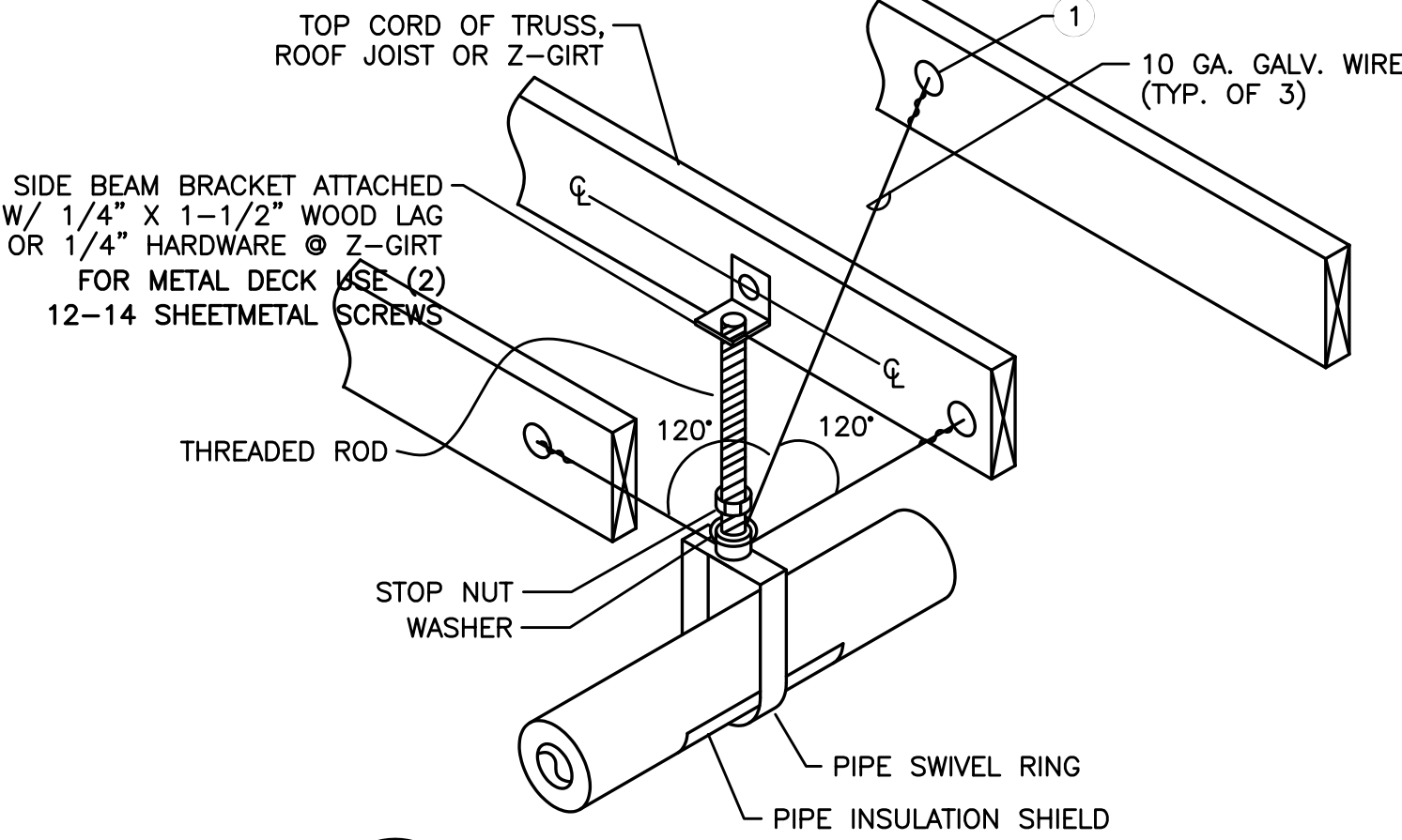
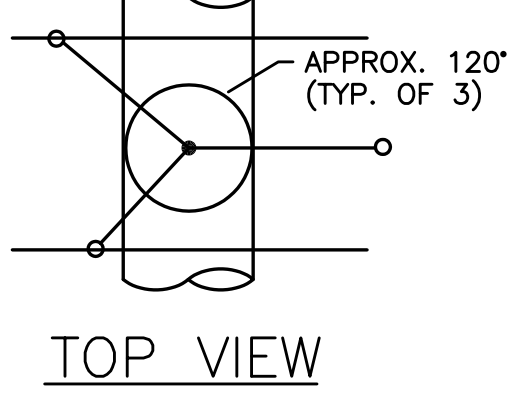
MARK	FIXTURE	W	V	CW	HW	REMARKS
GO-1	GAS OUTLET	-	-	-	-	LAB TURRET
CT-1	CLAY TRAP	2"	-	-	-	J.R. SMITH 8715 IN FLOOR
CW-1	CLOTHES WASHER FITTING	2"	2"	1/2"	-	*
DF-1	DRINKING FOUNTAIN	1-1/2"	1-1/2"	1/2"	-	FACE MOUNT, DUAL HEIGHT, ADA
DS-1	DOWNSPOUT	-	-	-	-	SEE DWG FOR SIZE SEE 5/P6.01
DS-2	DOWNSPOUT	-	-	-	-	
ES-1	EMERGENCY SHOWER	3"	2"	1-1/4"	-	W/ EYEWASH SEE 6/P6.01
FD-1	FLOOR DRAIN RR	3"	V.L.	-	-	J.R. SMITH 2005B (SQUARE)
FD-2	FLOOR DRAIN ART/KITCH	3"	V.L.	-	-	J.R. SMITH 2120 HD W/NB TOP & RIM
TD-1	TRENCH DRAIN	4"	2"	-	-	SEE 4/P6.00
FS-1	FLOOR SINK	3"	V.L.	-	-	J.R. SMITH 3002 STAINLESS STEEL
FS-2	FLOOR SINK	3"	V.L.	-	-	J.R. SMITH 3150 ENAMELED C.I.
HB-1	HOSE BIBB	-	-	3/4"	-	NON-FREEZE
HB-2	HOSE BIBB	-	-	1/2"	-	INDOOR
HB-3	HOSE BIBB	-	-	1/2"	-	ROOF
HB-4	HOSE BIBB	-	-	1/2"	-	INDOOR SILL COCK @ MECH. ROOM
LV-1	LAVATORY	1-1/2"	1-1/2"	1/2"	-	RECTANGULAR WALL MOUNT, STAFF
RC-1	REFRIGERATOR CONNECTION	-	-	1/2"	-	1/2" GUY GRAY BIM 875
RD-1	ROOF DRAIN	-	-	-	-	J.R. SMITH 1010
OD-1	OVERFLOW DRAIN	-	-	-	-	J.R. SMITH 1070
OD-2	OVERFLOW OUTLET	-	-	-	-	J.R. SMITH 1710
OD-3	OVERFLOW DRAIN	-	-	-	-	
S-1	SCIENCE SINK	2"	1-1/2"	1/2"	-	1-COMP *
S-2	SCIENCE INSTR. SINK	2"	1-1/2"	1/2"	-	1-COMP SEE 9/P6.01 *
S-3	CLASSROOM SINK	2"	1-1/2"	1/2"	-	1-COMP *
S-4	SCIENCE PREP	2"	1-1/2"	1/2"	-	1-COMP W/EYEWASH *
S-5	ART SINK	2"	1-1/2"	1/2"	-	1-COMP W/ SOLIDS TRAP
S-6	LIFE SKILLS SINK	2"	1-1/2"	1/2"	-	*
S-7	HEALTH SINK	2"	1-1/2"	1/2"	-	*
S-8	COFFEE SINK	2"	1-1/2"	1/2"	-	*
S-9	BREAK ROOM SINK	2"	1-1/2"	1/2"	-	1-COMP W/DISPOSAL *
S-10	ART SINK CUSTOM	2"	1-1/2"	1/2"	-	SEE 2/P6.00
S-11	COMMONS RECYCLING SINK	2"	1-1/2"	1/2"	-	1-COMP *
SH-1	SHOWER	2"	2"	1/2"	-	LIFESKILLS & COACH, FIBERGLASS
SH-2	SHOWER	-	V.L.	1/2"	-	STUDENT
SH-3	SHOWER	-	V.L.	1/2"	-	ADA LOCKERS
SS-1	SERVICE SINK	3"	2"	1/2"	-	24X24 MOP SINK, SEE DETAIL 4/P6.02
SS-2	SERVICE SINK	3"	2"	1/2"	-	CORNER STYLE MOP SINK
UR-1	URINAL	2"	1-1/2"	3/4"	-	STALL, FLUSH VALVE - IR, ADA
WC-1	WATER CLOSET **	4"	2"	1"	-	WALL HUNG, FLUSH VALVE - IR
WC-2	WATER CLOSET **	4"	2"	1"	-	WALL HUNG, FLUSH VALVE - IR, ADA
WC-3	STAFF WATER CLOSET **	4"	2"	1"	-	WALL HUNG, FLUSH VALVE - IR, ADA
WC-1A	WATER CLOSET ***	4"	2"	1"	-	WALL HUNG, FLUSH VALVE - IR
WC-2A	WATER CLOSET ***	4"	2"	1"	-	WALL HUNG, FLUSH VALVE - IR, ADA
WF-1	WASH FOUNTAIN	1-1/2"	1-1/2"	1/2"	-	2-STATION; *
AD-1	AREA DRAIN	3"	V.L.	-	-	JAY R. SMITH 2120

V.L. - VENTED LINE IR - INFRA-RED
* - PROVIDE W/CLEANOUT BELOW SINK/FIXTURE.
** - DUAL FLUSH
*** - 1.28 GPF

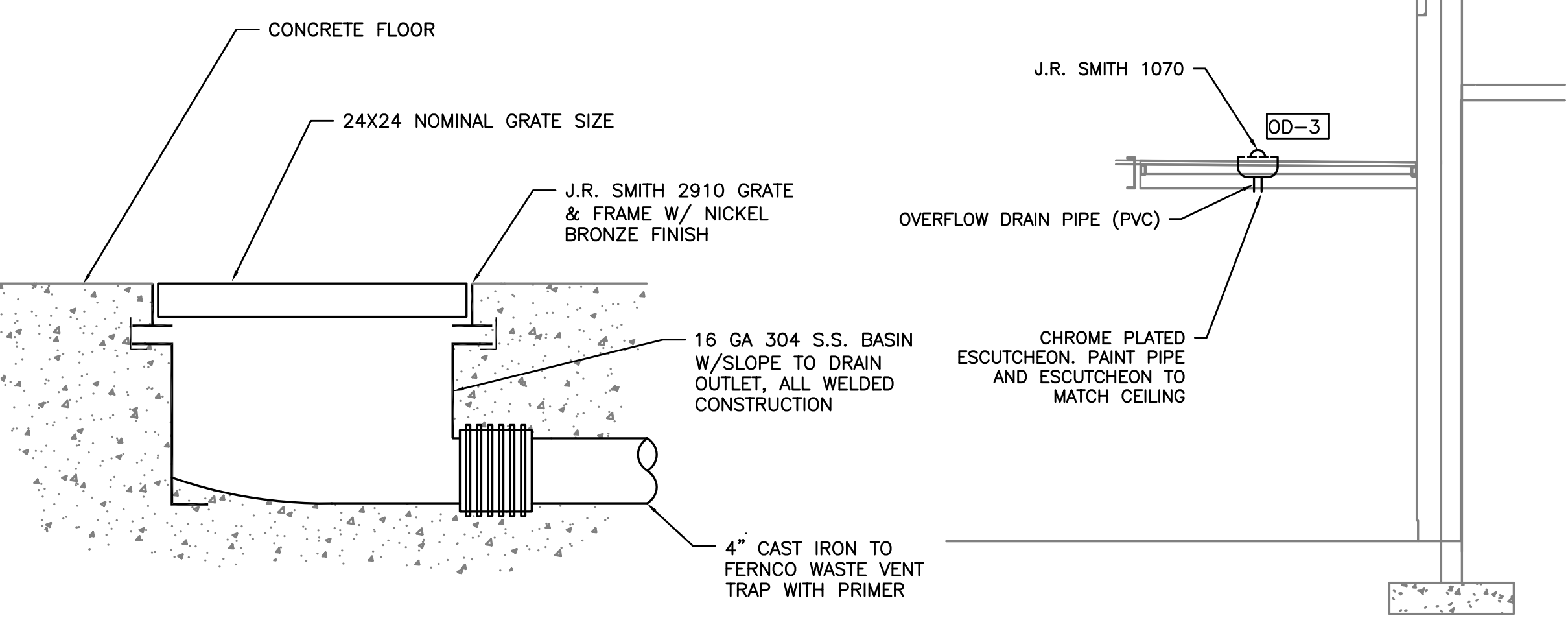
3/P6.00 NOTES

1 - 1/4" GALV. THREADED EYE BOLT @ CENTER OF WOOD MEMBER (TYP. OF 3). FOR 2-GIRT USE MACHINE THREAD EYE BOLT W/ JAMB NUT & 1/4" WASHER @ EACH SIDE OF GIRT USE 12 SHEETMETAL SCREWS & 16 GA MIN. 16 GA. MIN STRUT ANGLE CLIP

* - MAXIMUM HANGER SPACING SHALL BE AS FOLLOWS:
1-1/4" AND SMALLER PIPE 7' SPAN
1-1/2" PIPE 9' SPAN



3 NON-SEISMIC PIPE SUPPORT
SCALE: DETAIL



4 TRENCH DRAIN (TD-1)
SCALE: DETAIL

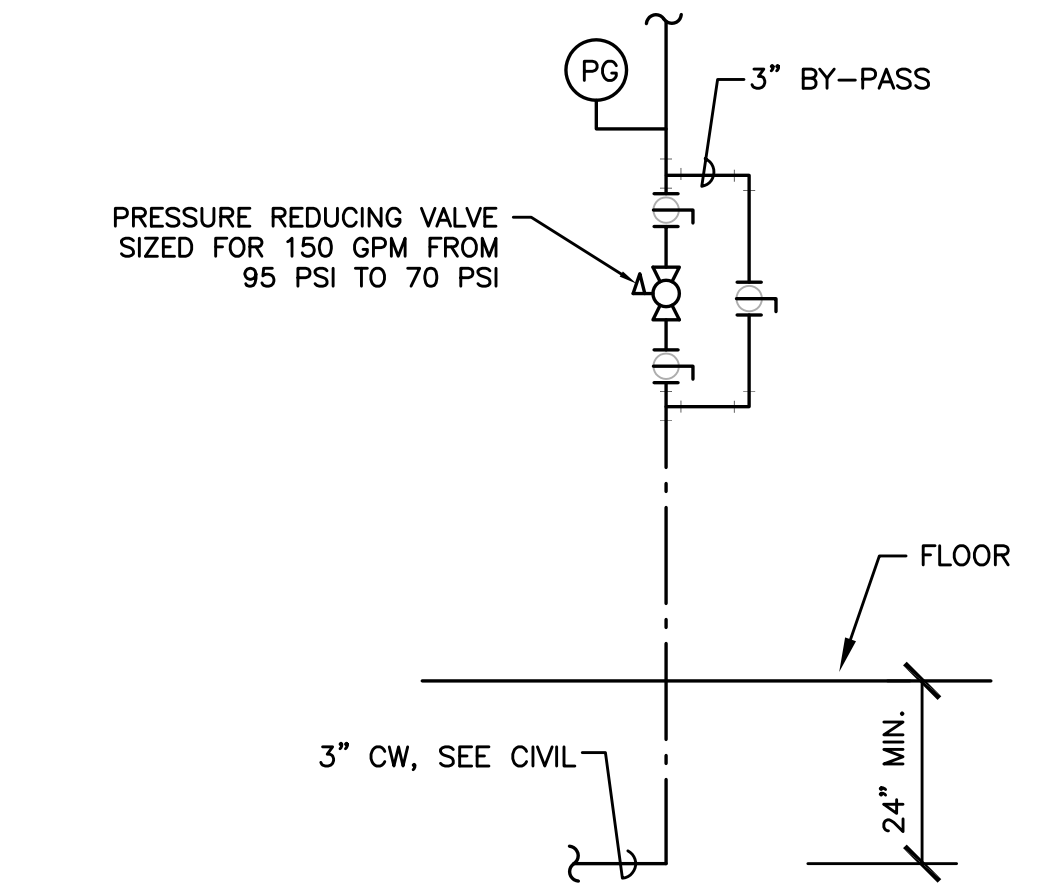
5 OVERFLOW DRAIN
SCALE: DETAIL

RECORD DRAWING:
THIS DRAWING HAS BEEN UPDATED TO REFLECT CHANGES MADE DURING CONSTRUCTION BASED UPON INFORMATION FURNISHED TO THE ENGINEER BY THE INSTALLATION CONTRACTOR. NO WARRANTY EITHER EXPLICIT OR IMPLIED IS GIVEN BY MFA, INC. AS TO THE ACCURACY AND/OR COMPLETENESS OF THIS INFORMATION.

PLUMBING LEGEND

AFF	ABOVE FINISHED FLOOR	---	(CW) COLD WATER
ARCH	ARCHITECTURAL	---	(NPW) NON-POTABLE WATER
B.G.	BELOW GRADE	---	(HW) HOT WATER
BTU	BRITISH THERMAL UNIT	---	(HWR) HOT WATER RECIRC
CAP.	CAPACITY	---	(GW) GREASE WASTE
C.I.	CAST IRON	---	(SW) SCIENCE WASTE
COMP.	COMPARTMENT	---	(PW) PRESSURE WASTE
CONT.	CONTINUATION	---	(W) BELOW GRADE WASTE
CU.	CUBIC	---	(W) ABOVE GRADE WASTE
DF	DRINKING FOUNTAIN	---	(AV) ACID VENT
DI	DIONIZED (WATER)	---	(V) VENT
DIA.	DIAMETER	---	(RD) RAIN DRAIN
ELEV.	ELEVATION	---	(OD) OVERFLOW DRAIN
EWC	ELECTRIC WATER COOLER	---	(FDC) (FDC) FIRE DEPARTMENT CONNECTION
FD	FLOOR DRAIN	---	(A) (A) COMPRESSED AIR
FDC	FIRE DEPARTMENT CONNECTION	---	(MV) MEDICAL VACUUM
F.F.	FINISH FLOOR	---	(P) PROPANE
FLG.	FLANGE	---	(F) (F) FIRE WATER
FT	FOOT / FEET	---	(MA) (MA) MEDICAL AIR
G	GAS	---	
GA.	GAUGE	---	
GALV.	GALVANIZED	---	
GPM	GALLONS PER MINUTE	---	
G.V.	GATE VALVE	---	
HP	HORSEPOWER	---	
HR.	HOSE	---	
I.E.	INVERT ELEVATION	---	
KW	KILOWATT	---	
LAV	LAVATORY	---	
LBS	POUNDS	---	
MAX.	MAXIMUM	---	
MBH	THOUSANDS OF BTUs PER HOUR	---	
MIN.	MINIMUM	---	
M.J.	MECHANICAL JOINT	---	
N.I.M.	NOT IN MECHANICAL	---	
OS&Y	OUTSIDE STEM & YOKE	---	
PROT.	PROTECTION	---	
PRV	PRESSURE REDUCING VALVE	---	
PSI	POUNDS PER SQUARE INCH	---	
PSIG	PRESSURE / TEMPERATURE	---	
P/T	REQUIRED	---	
REO'D	REDUCED PRESSURE BACKFLOW PREVENTER	---	
RPBP	REVOLUTIONS PER MINUTE	---	
URM	TYPICAL	---	
UR	URINAL	---	
VTR	VENT THROUGH ROOF	---	
WC	WATER CLOSET	---	

XX	EQUIPMENT MARK NUMBER	△	PRESSURE/TEMP RELIEF VALVE
XXX	FIXTURE MARK	∩	BUTTERFLY VALVE
(E)	EXISTING	⊕	GAS PRESSURE REGULATING VALVE
#	NOTE	⊕	TOP CONNECTION
⊕	CONNECT TO EXISTING	⊕	BOTTOM CONNECTION
⊕	CAP	⊕	PIPE TURNED UP, PIPE TURNED DOWN
⊕	TEE	⊕	GATE VALVE
⊕	ELBOW	⊕	BALL VALVE
⊕	CLEANOUT	⊕	BALANCING VALVE
		⊕	CHECK VALVE
		⊕	UNION
		⊕	DOUBLE CHECK ASSEMBLY



1 DOMESTIC RISER
SCALE: DETAIL

