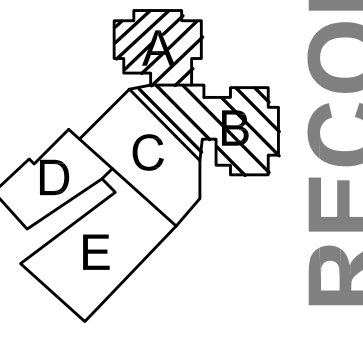


NEW PARKROSE MIDDLE SCHOOL - PACKAGE 2

Parkrose School District
 Project Address: 11800 NE Shaver Street, Portland, OR 97220
 t: (503) 408-2900 f: (503) 408-2998

MFA INC. Consulting Engineers
 2007 S.E. Ash St
 Portland, OR 97214
 PH: (503) 234-0548
 FAX: (503) 234-0677
 WWW.MFA-ENG.COM
 CONTACT: ANTONIO JOHNSON

RECORD DRAWINGS

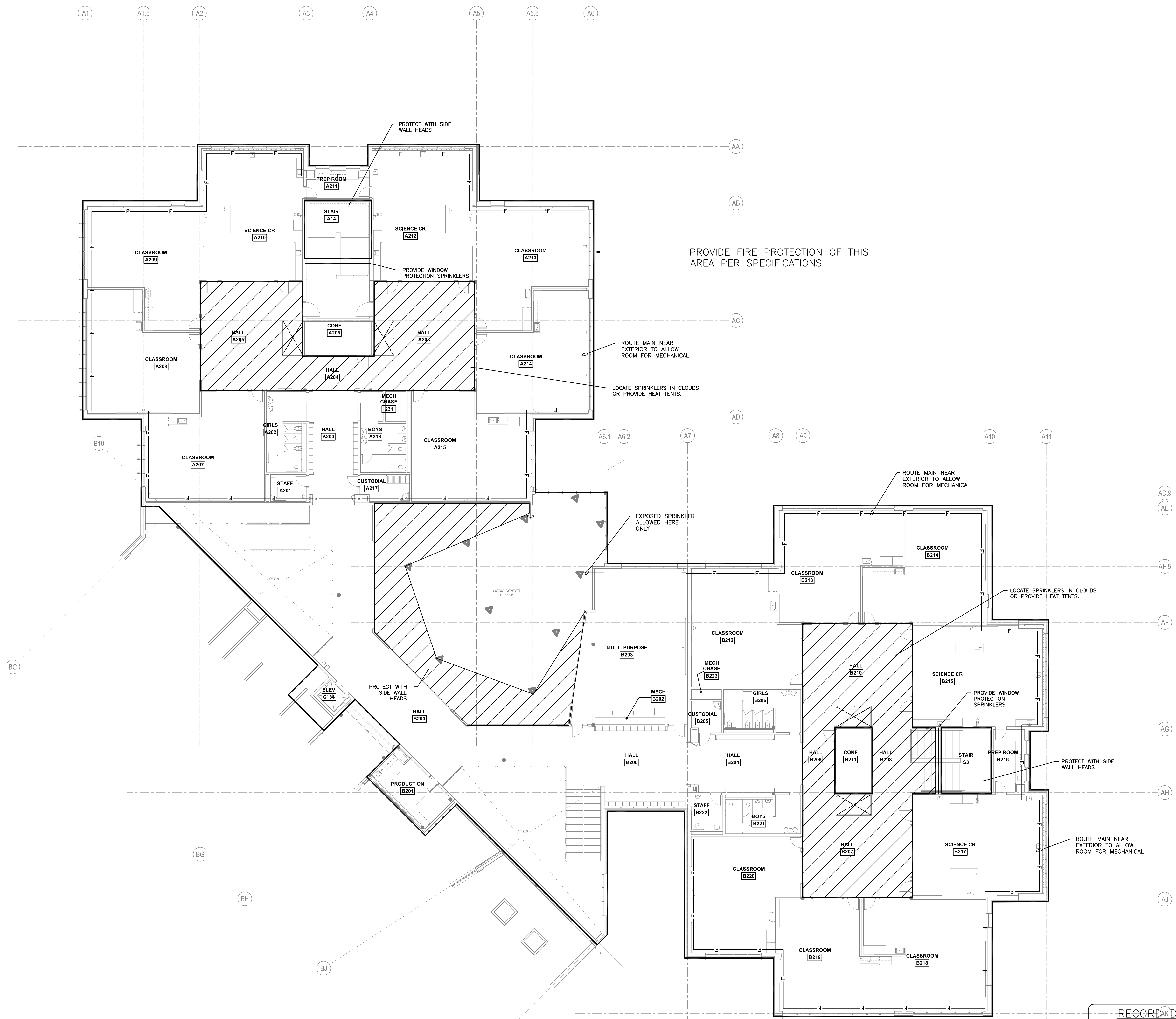


key plan

phase	RECORD DRAWING
date	11/09/2015
revisions	
project #	11082

LEVEL 2
 FIRE PROTECTION PLAN

P4.11



1 LEVEL 2 FIRE PROTECTION PLAN
 SCALE: 3/32"=1'-0"

RECORD DRAWING:
 THIS DRAWING HAS BEEN UPDATED TO REFLECT CHANGES MADE DURING CONSTRUCTION BASED UPON INFORMATION FURNISHED TO THE ENGINEER BY THE INSTALLATION CONTRACTOR. NO WARRANTY, EITHER EXPLICIT OR IMPLIED IS GIVEN BY MFA, INC. AS TO THE ACCURACY AND/OR COMPLETENESS OF THIS INFORMATION.

g:\dowa\architects\64171_parkrose middle school\mefire\record drawings\complete - call area.pdf\64171-011.dwg, 10/4/2016 9:37 AM