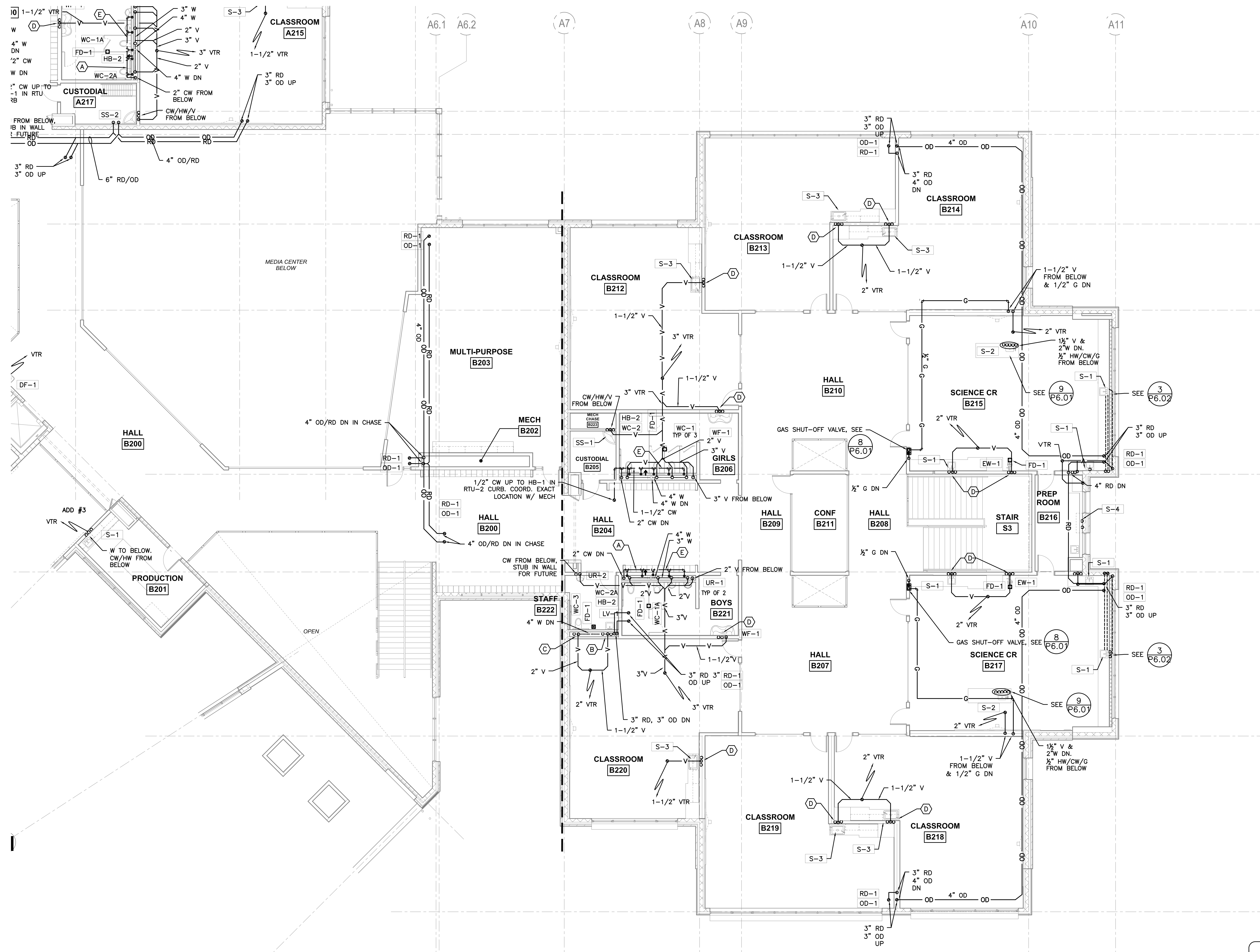


- P2.21 & P2.22 SHEET NOTES:**
- (A) -1-1/2" CW
 - (B) -1/2" CW/HW & 1-1/2" V FROM BELOW
 - (C) -1" CW & VENT FROM BELOW
 - (D) -HW/CW/V FROM BELOW & WASTE DN
 - (E) -1-1/4" CW

GENERAL NOTES

- SEE DETAIL 11/P6.01 FOR ACOUSTIC PENETRATION DETAIL. SEAL ALL PENETRATIONS OF ACOUSTICALLY IMPORTANT WALLS
- SEE DETAIL 3/P6.00 FOR NON-SEISMIC DUCT SUPPORT
- SEE DETAIL 3/P6.01 FOR SEISMIC DUCT SUPPORT (SEE SPECS FOR DESIGN REQUIREMENT)



1 LEVEL 2 SECTOR 'B' PLUMBING PLAN
P2.22 SCALE: 1/8"=1'-0"

RECORD DRAWING:
 THIS DRAWING HAS BEEN UPDATED TO REFLECT CHANGES MADE DURING CONSTRUCTION BASED UPON INFORMATION FURNISHED TO THE ENGINEER BY THE INSTALLATION CONTRACTOR. NO WARRANTY, EITHER EXPLICIT OR IMPLIED IS GIVEN BY MFA, INC. AS TO THE ACCURACY AND/OR COMPLETENESS OF THIS INFORMATION.

RECORD DRAWINGS

key plan

phase	RECORD DRAWING
date	11/09/2015
revisions	
project #	11082

LEVEL 2 SECTOR 'B'
 PLUMBING PLAN
P2.22

g:\dowa\architects\6470_parkrose middle school\mef\record\drawings\complete - call area.pdf\6470-p221_p222.dwg 10/4/2016 8:34 AM