

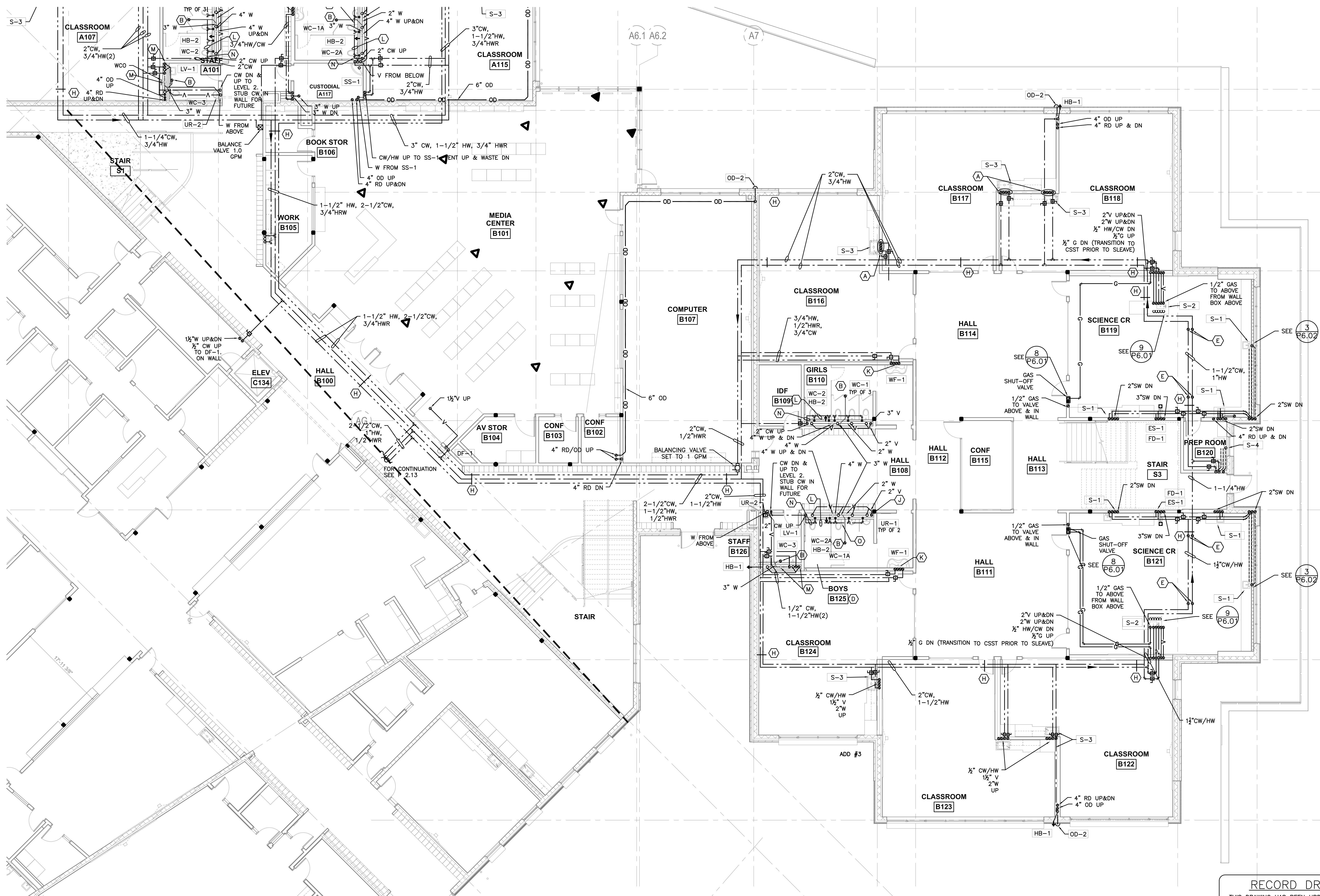
phase	RECORD DRAWING
date	11/09/2015
revisions	
project #	11082

LEVEL 1 SECTOR 'B'  
PLUMBING PLAN

**P2.12**

- P2.10, P2.11 & P2.12 SHEET NOTES:**
- (A) - 1/2" CW/HW UP & DN. 2" W FROM ABOVE & TO BELOW. 1-1/2" V UP
  - (B) - W FROM FD ABOVE
  - (C) - 2" W FROM ABOVE & TO BELOW
  - (D) - PROVIDE LOW VOLTAGE WIRING BETWEEN TRANSFORMER & FLUSH VALVE. INSTALL W/ SUPPORT & SECURE PER N.E.C. GUIDELINES FOR LOW VOLTAGE WIRE. LOCATE TRANSFORMER PER ELECTRICAL DWGS. PROVIDE ACCESS AS REQUIRED
  - (E) - PIPING TRANSITION UP/DN OVER DUCTWORK, TYPICAL
  - (F) - SCIENCE WASTE FROM LEVEL 1 FIXTURE ABOVE
  - (G) - WASTE FROM SINK ABOVE
  - (H) - SEISMIC PIPE SUPPORT. SEE SPECS, TYP.
  - (I) - NOT USED
  - (J) - 2" VENT BRANCH FROM ALL FIXTURES IN RR. ROUTE 3" V UP TO ABOVE
  - (K) - WASTE FROM ABOVE TO BELOW. VENT UP
  - (L) - 1-1/2" CW
  - (M) - 4" W UP & DN. 2 V UP
  - (N) - 2" CW
  - (O) - 1-1/4" CW

- GENERAL NOTES**
- SEE DETAIL 11/P6.01 FOR ACOUSTIC PENETRATION DETAIL. SEAL ALL PENETRATIONS OF ACOUSTICALLY IMPORTANT WALLS
  - SEE DETAIL 3/P6.00 FOR NON-SEISMIC DUCT SUPPORT
  - SEE DETAIL 5/P6.01 FOR SEISMIC DUCT SUPPORT (SEE SPECS FOR DESIGN REQUIREMENT)



**1** LEVEL 1 SECTOR 'B' PLUMBING PLAN  
**P2.12** SCALE: 1/8"=1'-0"

**RECORD DRAWING:**  
THIS DRAWING HAS BEEN UPDATED TO REFLECT CHANGES MADE DURING CONSTRUCTION BASED UPON INFORMATION FURNISHED TO THE ENGINEER BY THE INSTALLATION CONTRACTOR. NO WARRANTY, EITHER EXPLICIT OR IMPLIED IS GIVEN BY MFA, INC. AS TO THE ACCURACY AND/OR COMPLETENESS OF THIS INFORMATION.

d:\dow\architects\6470\_parkrose\_middle\_school\mefire\record\drawings\complete\_cad\user\pdf\6470p210\_p211\_p212\_waste.dwg 10/10/2016 8:21 AM