

key plan

phase | RECORD DRAWING

date | 11/09/2015

revisions |

project # | 11082

LEVEL 1 SECTOR 'A'  
PLUMBING PLAN

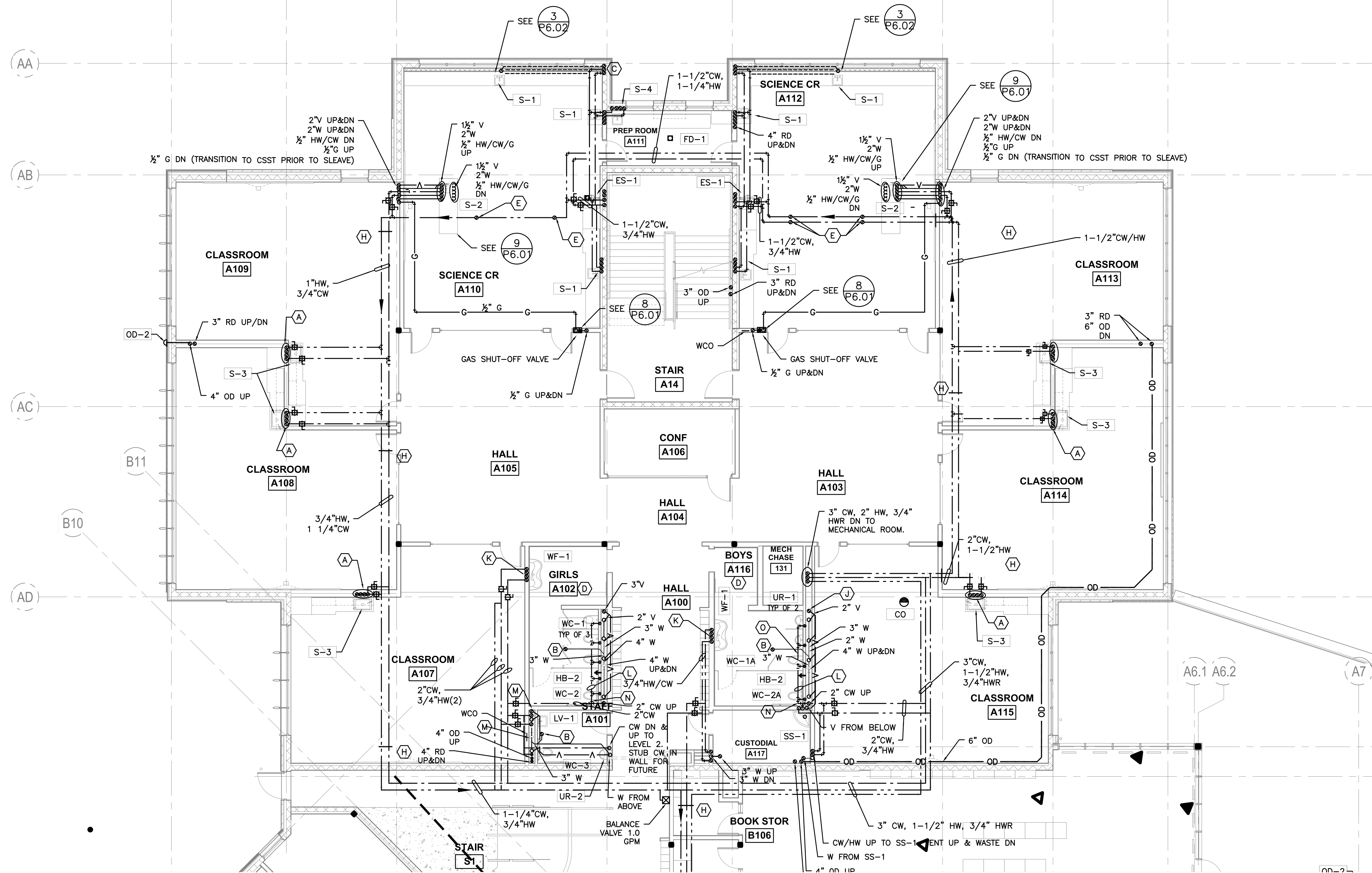
P2.11

P2.10, P2.11 & P2.12 SHEET NOTES:

(A) - 1/2" CW/HW UP & DN. 2" W FROM ABOVE & TO BELOW. 1-1/2" V UP	(H) - SEISMIC PIPE SUPPORT. SEE SPECS, TYP.
(B) - W FROM FD ABOVE	(I) - NOT USED
(C) - 2" W FROM ABOVE & TO BELOW	(J) - 2" VENT BRANCH FROM ALL FIXTURES IN RR. ROUTE 3" V UP TO ABOVE
(D) - PROVIDE LOW VOLTAGE WIRING BETWEEN TRANSFORMER & FLUSH VALVE. INSTALL W/ SUPPORT & SECURE PER N.E.C. GUIDELINES FOR LOW VOLTAGE WIRE. LOCATE TRANSFORMER PER ELECTRICAL DWGS. PROVIDE ACCESS AS REQUIRED	(K) - WASTE FROM ABOVE TO BELOW. VENT UP
(E) - PIPING TRANSITION UP/DN OVER DUCTWORK, TYPICAL	(L) - 1-1/2" CW
(F) - SCIENCE WASTE FROM LEVEL 1 FIXTURE ABOVE	(M) - 4" W UP & DN. 2 V UP
(G) - WASTE FROM SINK ABOVE	(N) - 2" CW
	(O) - 1-1/4" CW

GENERAL NOTES

- SEE DETAIL 11/P6.01 FOR ACOUSTIC PENETRATION DETAIL. SEAL ALL PENETRATIONS OF ACOUSTICALLY IMPORTANT WALLS
- SEE DETAIL 3/P6.00 FOR NON-SEISMIC DUCT SUPPORT
- SEE DETAIL 3/P6.01 FOR SEISMIC DUCT SUPPORT (SEE SPECS FOR DESIGN REQUIREMENT)



1 LEVEL 1 SECTOR 'A' PLUMBING PLAN  
P2.11 SCALE: 1/8"=1'-0"

RECORD DRAWING:  
THIS DRAWING HAS BEEN UPDATED TO REFLECT CHANGES MADE DURING CONSTRUCTION BASED UPON INFORMATION FURNISHED TO THE ENGINEER BY THE INSTALLATION CONTRACTOR. NO WARRANTY, EITHER EXPLICIT OR IMPLIED IS GIVEN BY MFA, INC. AS TO THE ACCURACY AND/OR COMPLETENESS OF THIS INFORMATION.