

NEW PARKROSE MIDDLE SCHOOL - PACKAGE 2

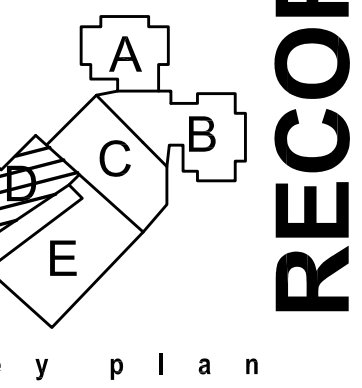
Parkrose School District

Project Address: 11800 NE Shaver Street, Portland, OR 97220

t: (503) 408-2900 f: (503) 408-2998

META INC. Consulting Engineers  
 2007 S.E. Ash St  
 Portland, OR 97214  
 PHN: (503) 234-0548  
 FAX: (503) 234-0677  
 WWW.META-ENG.COM  
 CONTACT: ANTONIO JOHNSON

RECORD DRAWINGS



key plan

phase | RECORD DRAWING

date | 11/09/2015

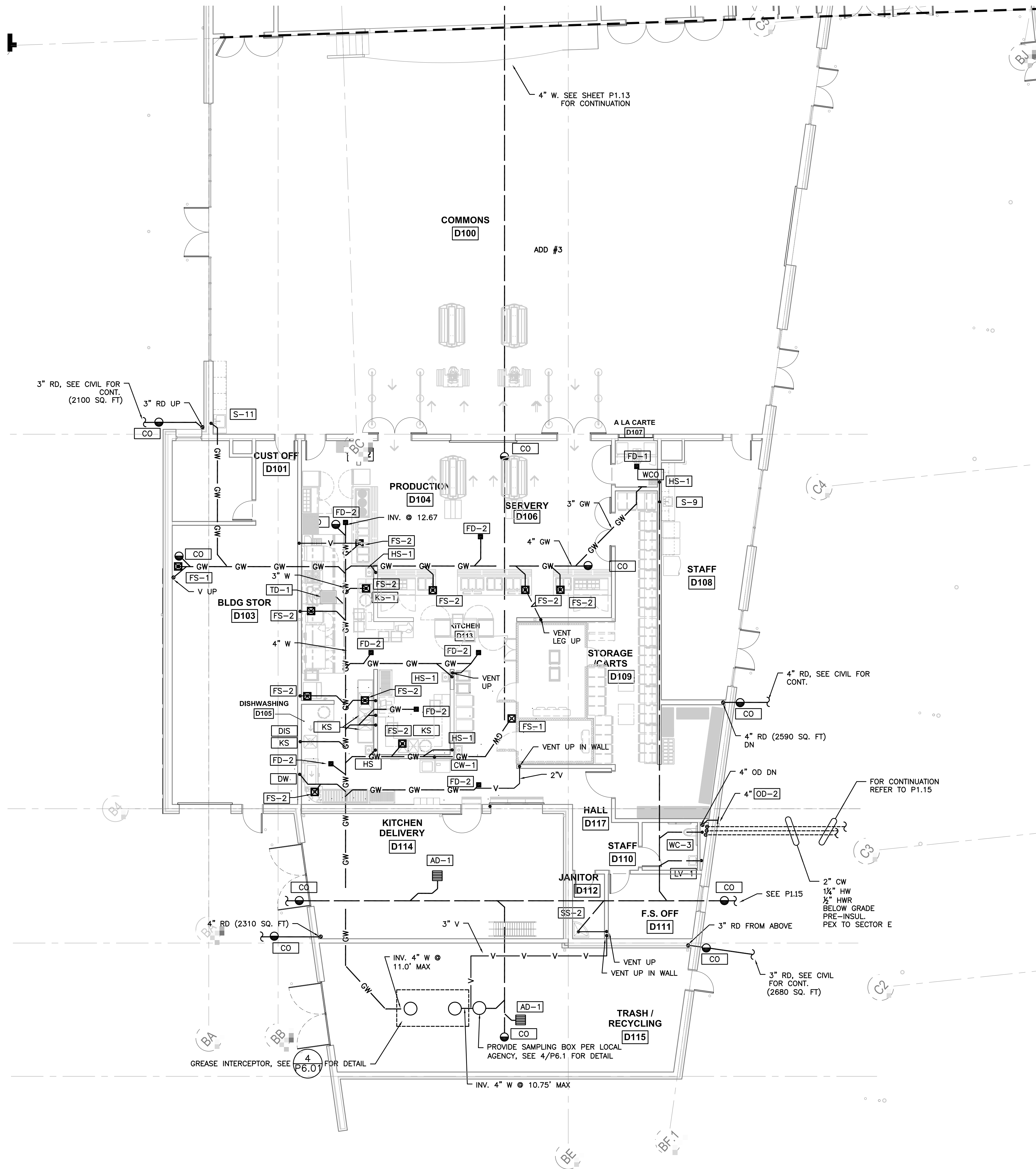
revisions |

project # | 11082

LEVEL 1 SECTOR 'D'  
 UNDERSLAB PLUMB PLAN

P1.14

GENERAL NOTES  
 (E) BUILDING PAD IS CONCRETE TREATED. PROVIDE MATERIALS & LABOR AS REQ'D TO REMOVE CONCRETE TREATED PAD FOR UNDERFLOOR WORK



1 LEVEL 1 SECTOR 'D' UNDERSLAB PLUMBING PLAN  
 P1.14 SCALE: 1/8"=1'-0"

RECORD DRAWING:  
 THIS DRAWING HAS BEEN UPDATED TO REFLECT CHANGES MADE DURING CONSTRUCTION BASED UPON INFORMATION FURNISHED TO THE ENGINEER BY THE INSTALLATION CONTRACTOR. NO WARRANTY, EITHER EXPLICIT OR IMPLIED IS GIVEN BY MFA, INC. AS TO THE ACCURACY AND/OR COMPLETENESS OF THIS INFORMATION.