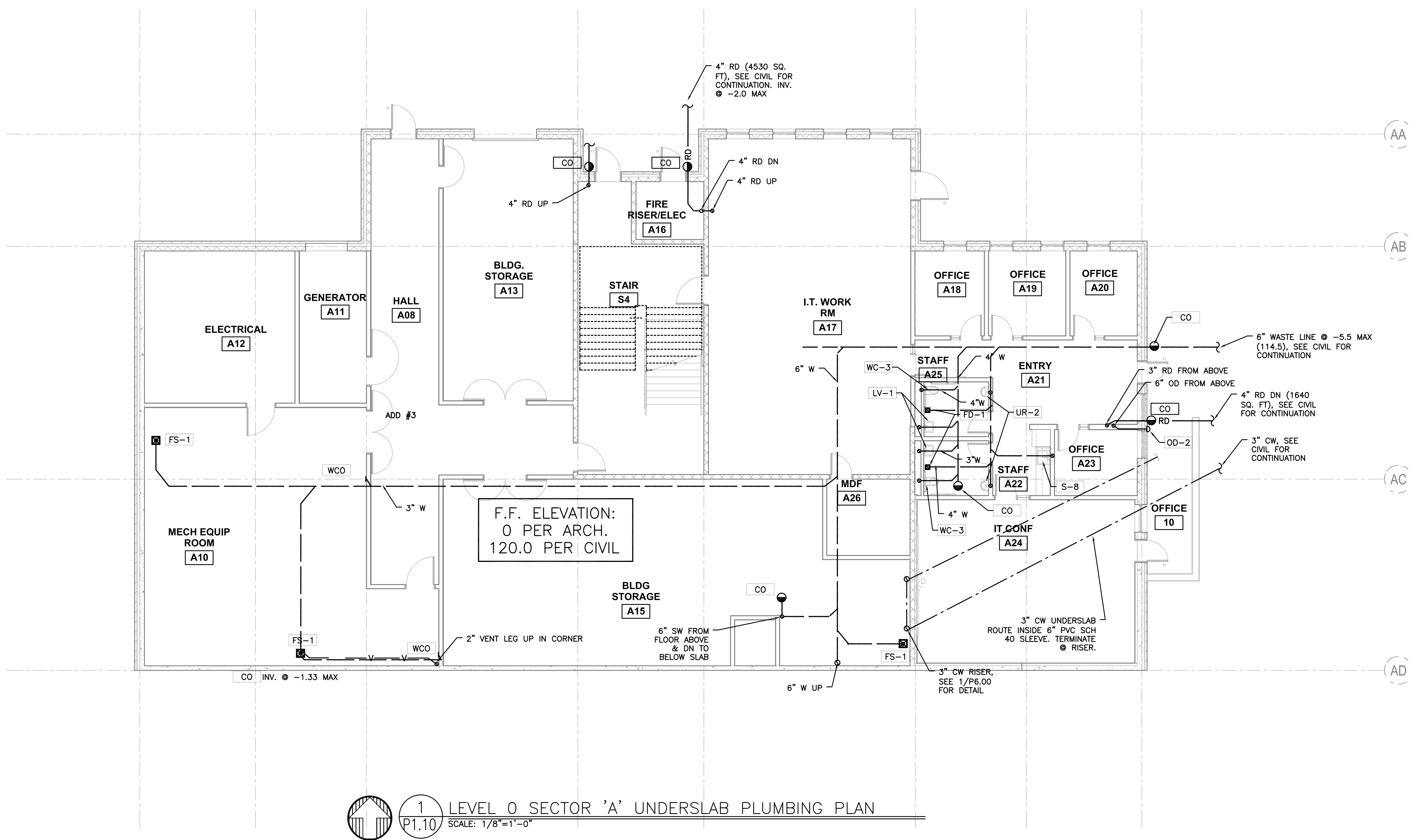


- P1.10, P1.11 & P1.12 SHEET NOTES:
- (A) - SEE DETAIL 3/P6.02 FOR PENINSULA SINK DETAIL
 - (B) - SCIENCE WASTE FROM ABOVE
 - (C) - SCIENCE WASTE FROM FIXTURE & DN THRU FLOOR TO LEVEL 0 CEILING
 - (D) - SEE DETAIL 9/P6.01 FOR ISLAND SINK DETAIL
 - (E) - SCIENCE WASTE FROM LEVEL 2 FIXTURE & DN IN WALL TO BELOW AS SHOWN
 - (F) - 4" W UP TO SERVE LEVEL 1 & 2 FIXTURES
 - (G) - SCIENCE WASTE FROM LEVEL 2 PENINSULA SINK & DN
 - (H) - SCIENCE WASTE FROM LEVEL 2 PENINSULA SINK

GENERAL NOTES

-(E) BUILDING PAD IS CONCRETE TREATED. PROVIDE MATERIALS & LABOR AS REQ'D TO REMOVE CONCRETE TREATED PAD FOR UNDERFLOOR WORK



1 LEVEL 0 SECTOR 'A' UNDERSLAB PLUMBING PLAN
 P1.10 SCALE: 1/8"=1'-0"

phase	RECORD DRAWING
date	11/09/2015
revisions	
project #	11082

LEVEL 0 SECTOR 'A'
 UNDERSLAB PLUMB PLAN

P1.10

RECORD DRAWING:
 THIS DRAWING HAS BEEN UPDATED TO REFLECT CHANGES MADE DURING CONSTRUCTION BASED UPON INFORMATION FURNISHED TO THE ENGINEER BY THE INSTALLATION CONTRACTOR. NO WARRANTY, EITHER EXPLICIT OR IMPLIED IS GIVEN BY MFA, INC. AS TO THE ACCURACY AND/OR COMPLETENESS OF THIS INFORMATION.

g:\dowa_architects\6470_parkrose_middle_school\mefrecord\record drawings\complete - call area.pdf\6470sp110_p110.plt, 11/09/2015 2:28:38 PM