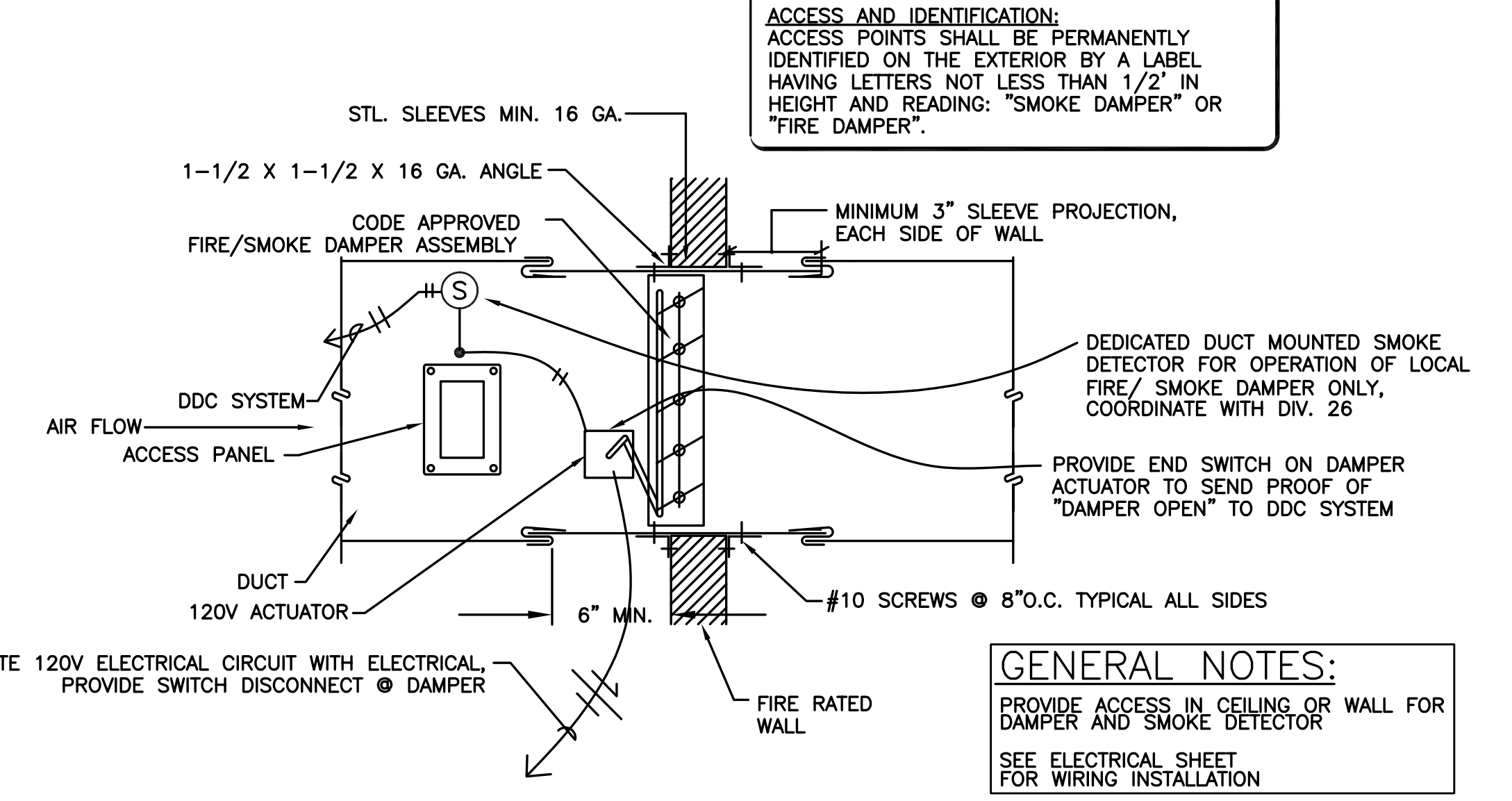
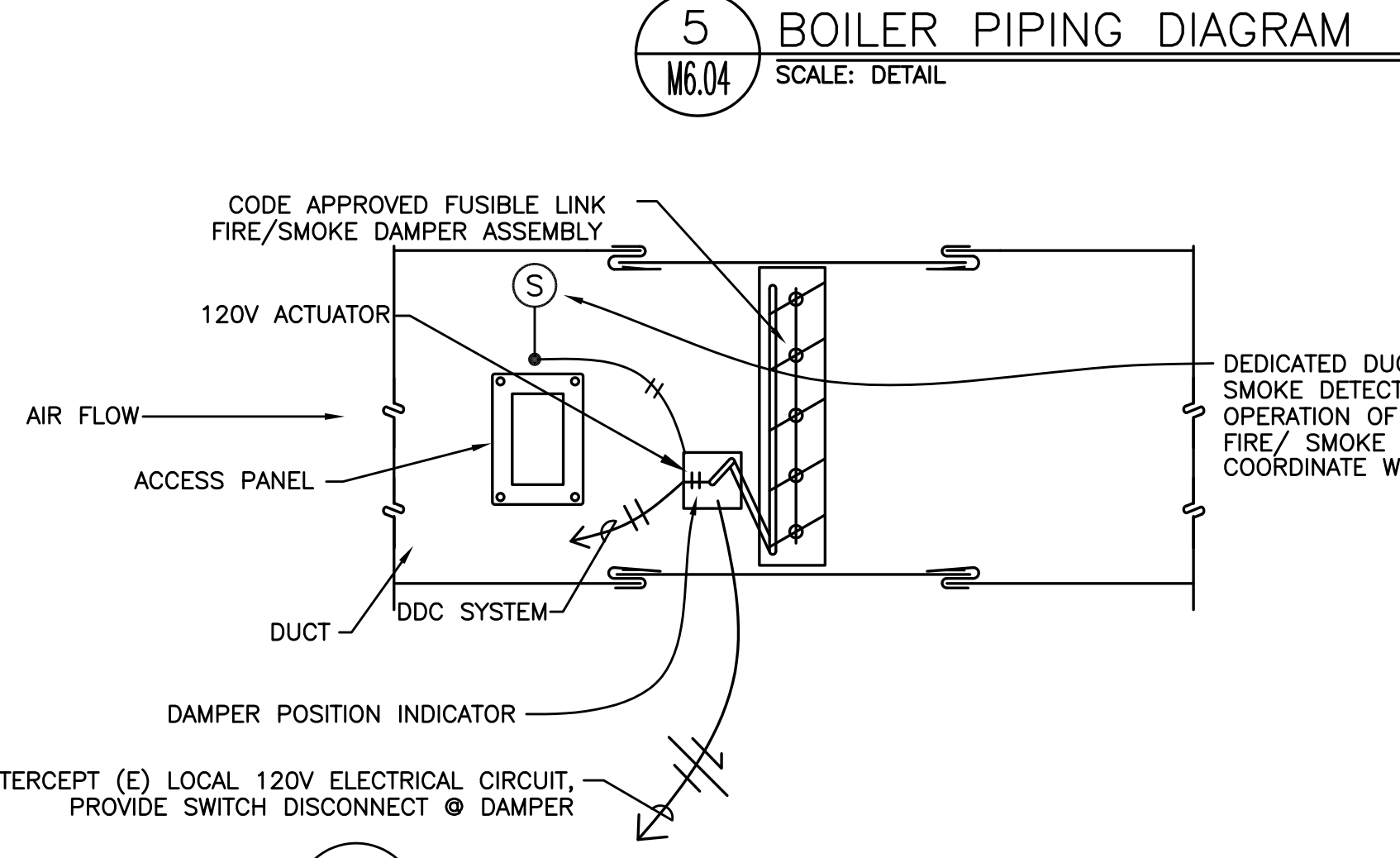
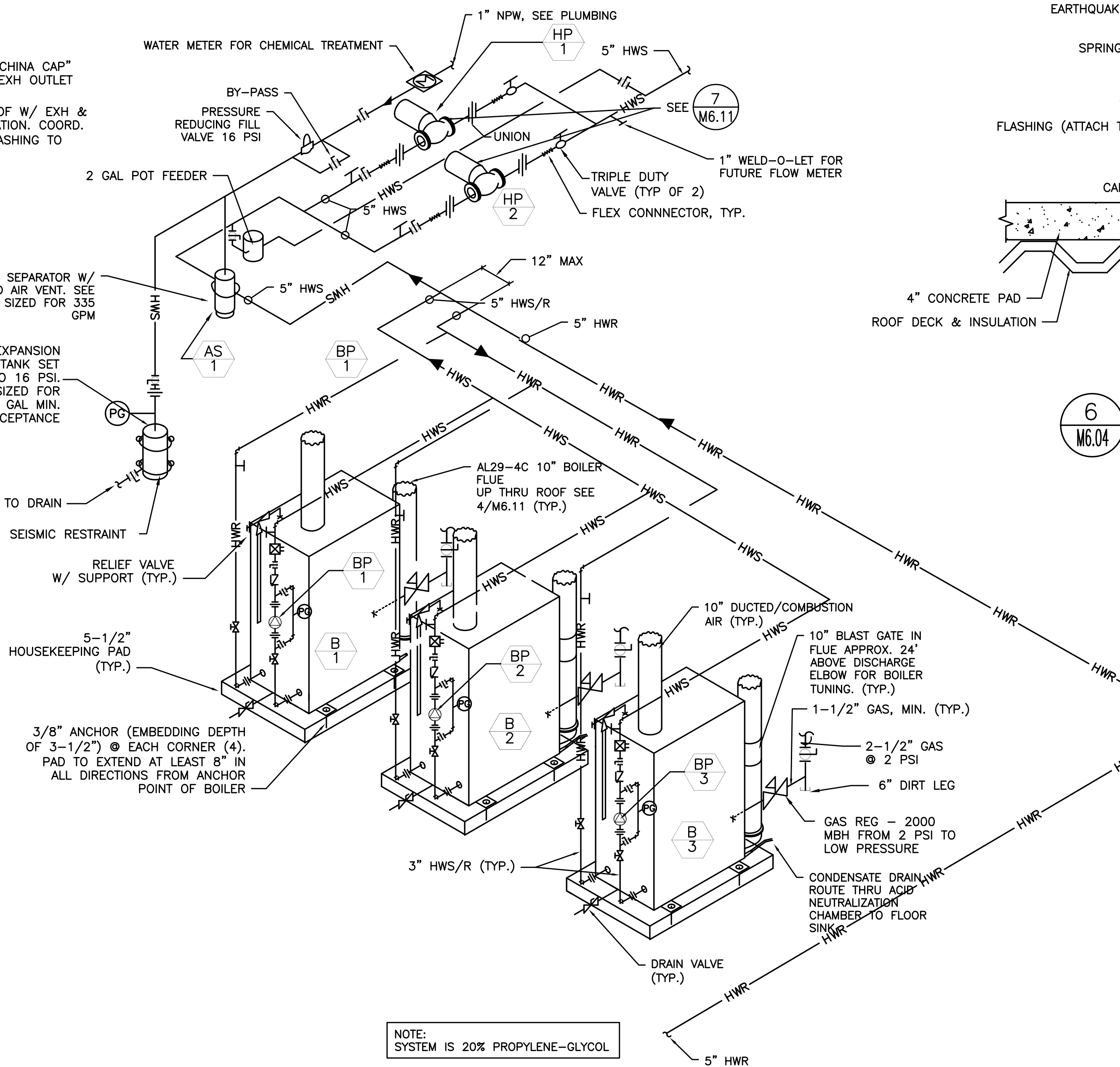
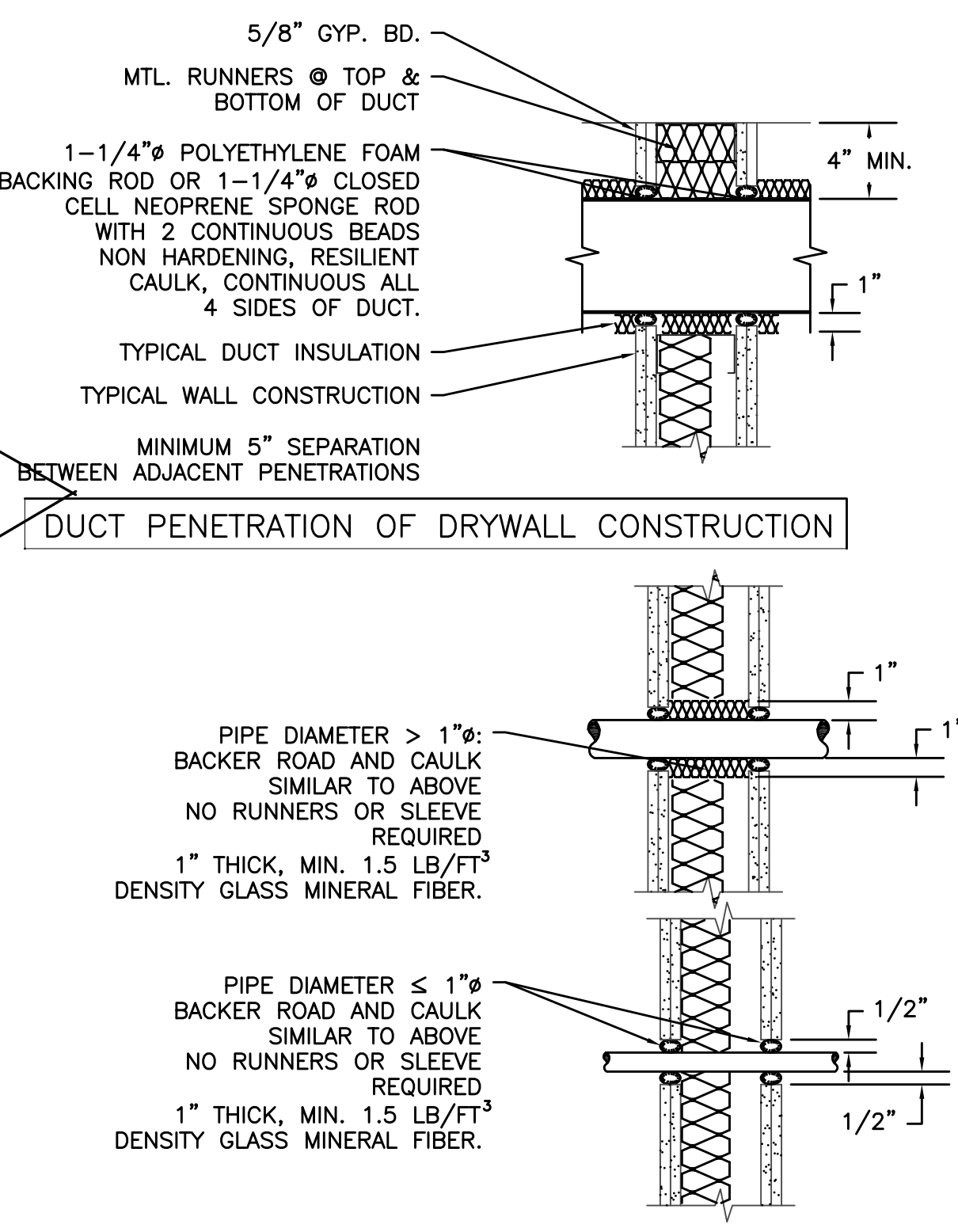
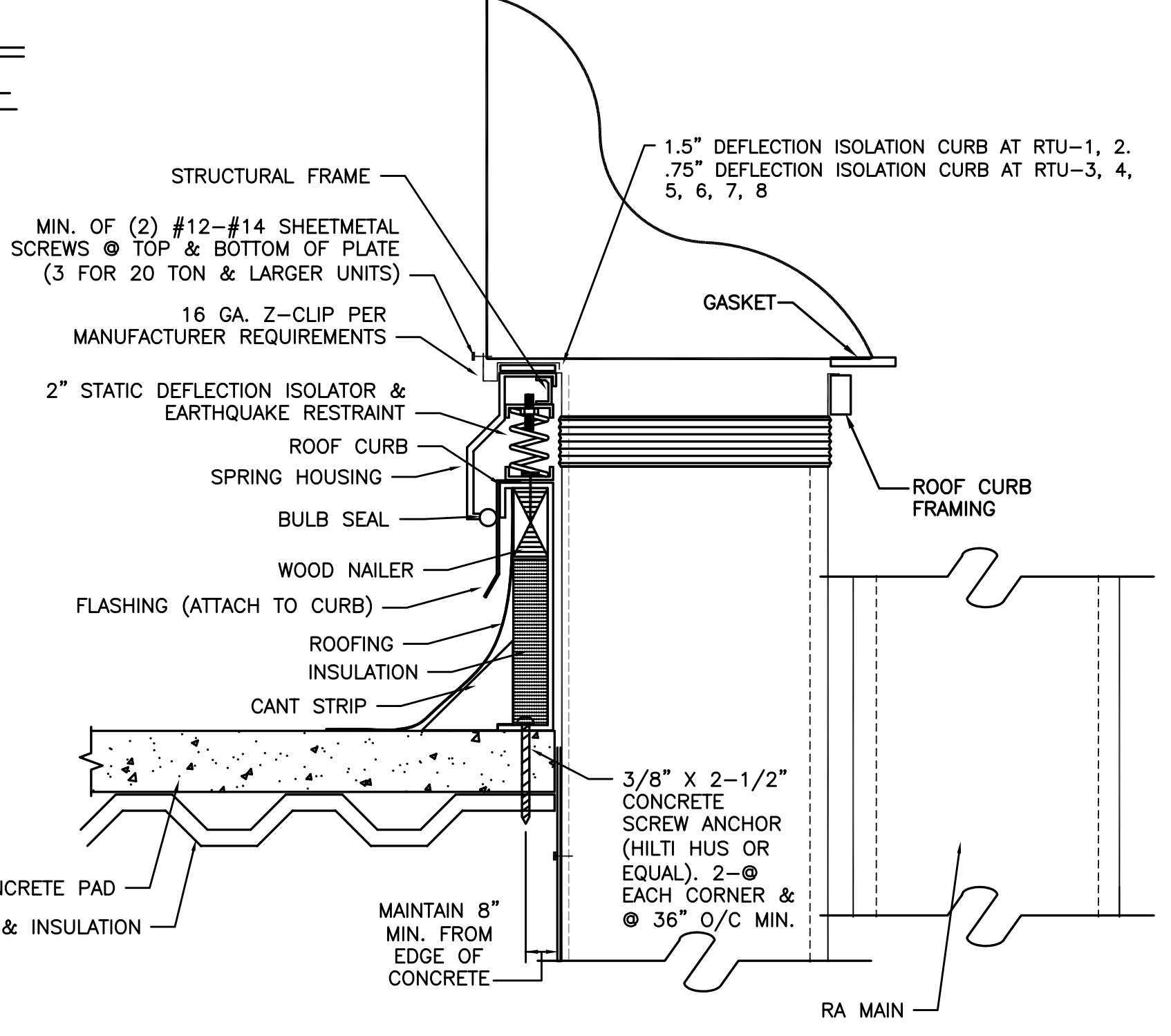
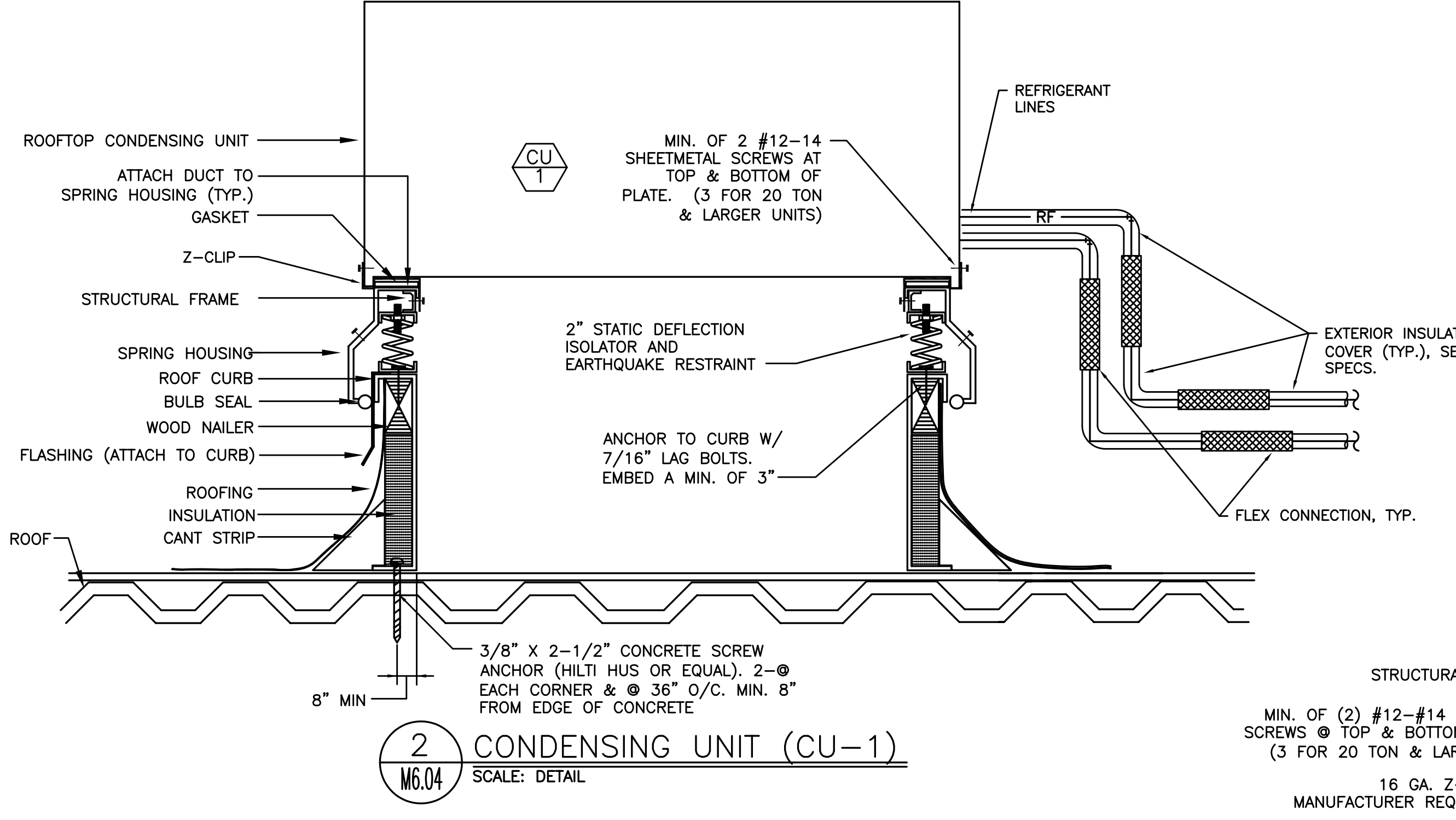
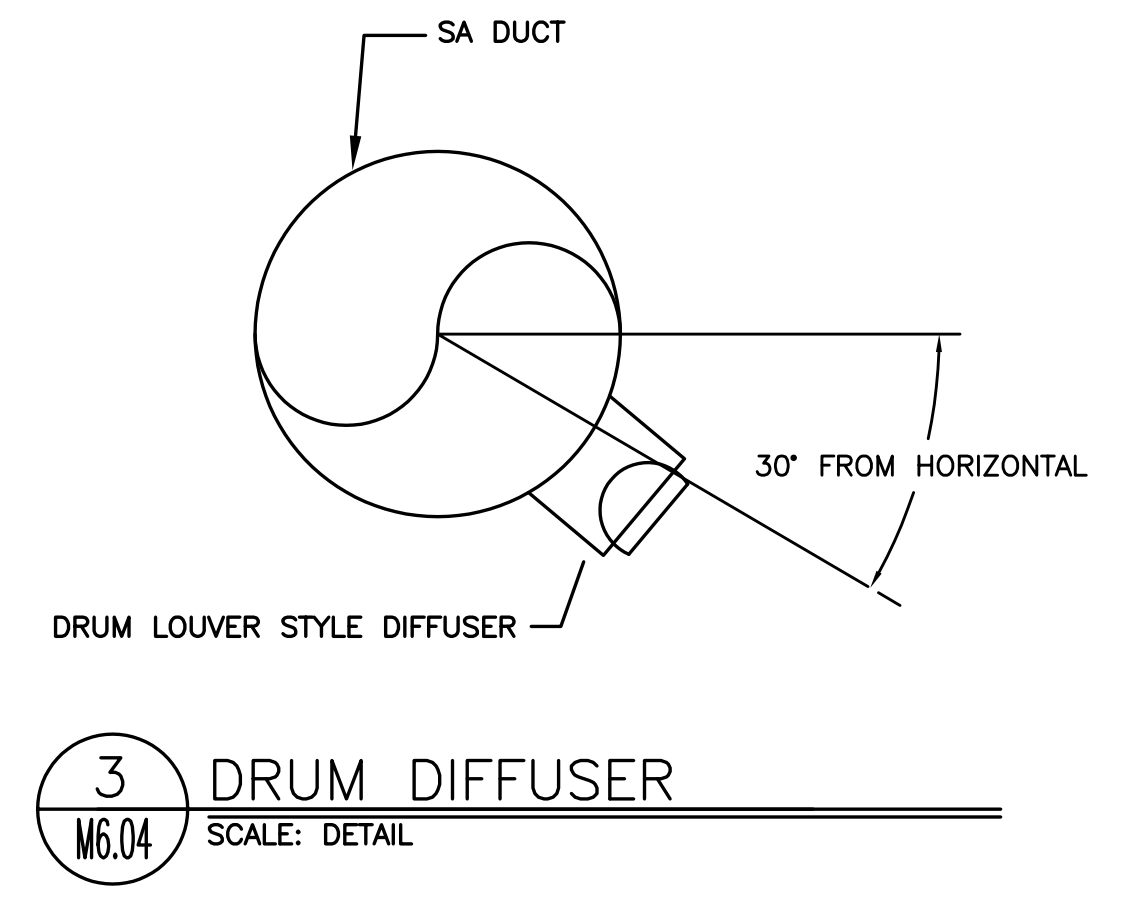


phase	RECORD DRAWING
date	11/09/2015
revisions	
project #	11082

MECHANICAL DETAILS

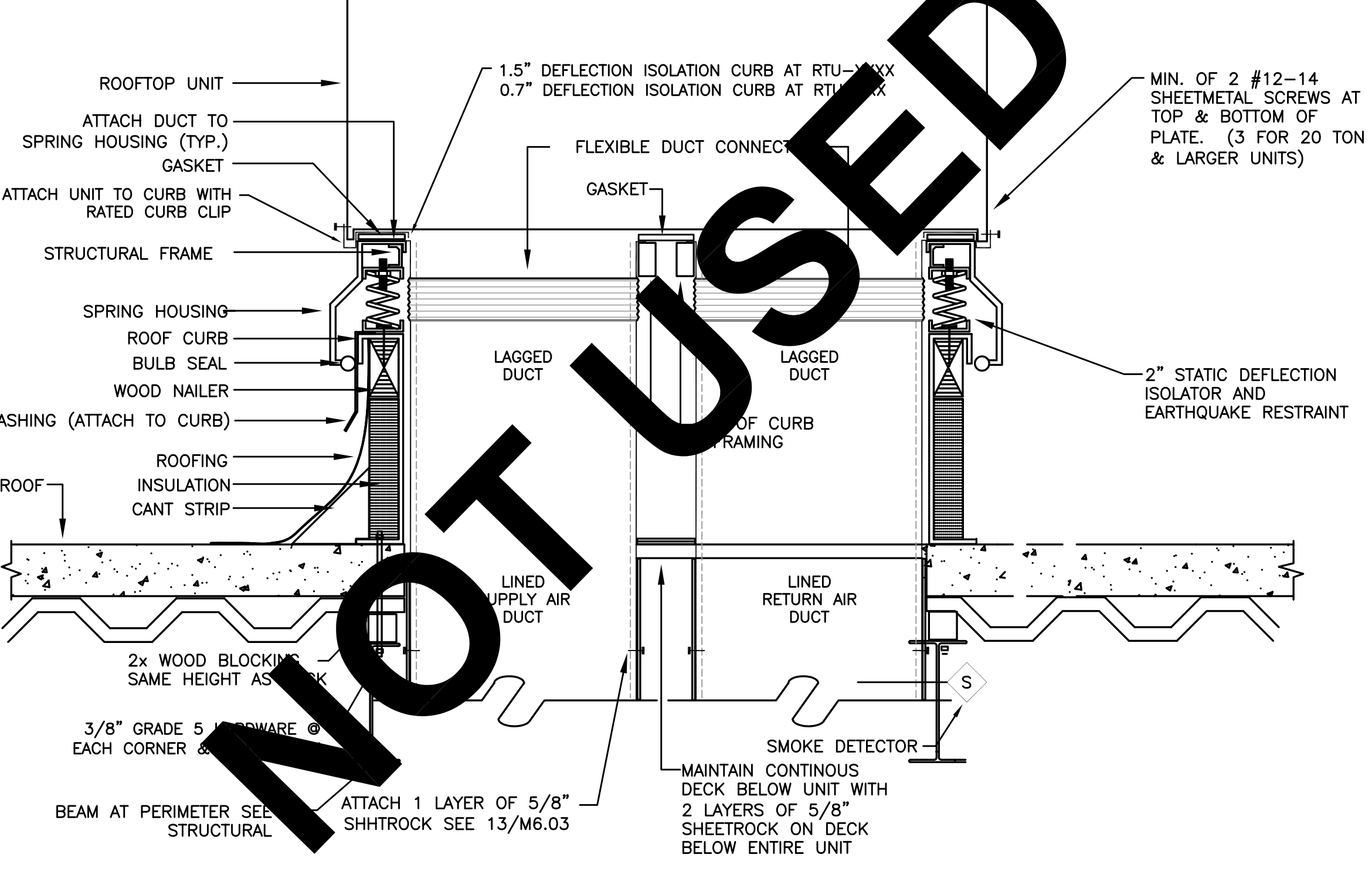
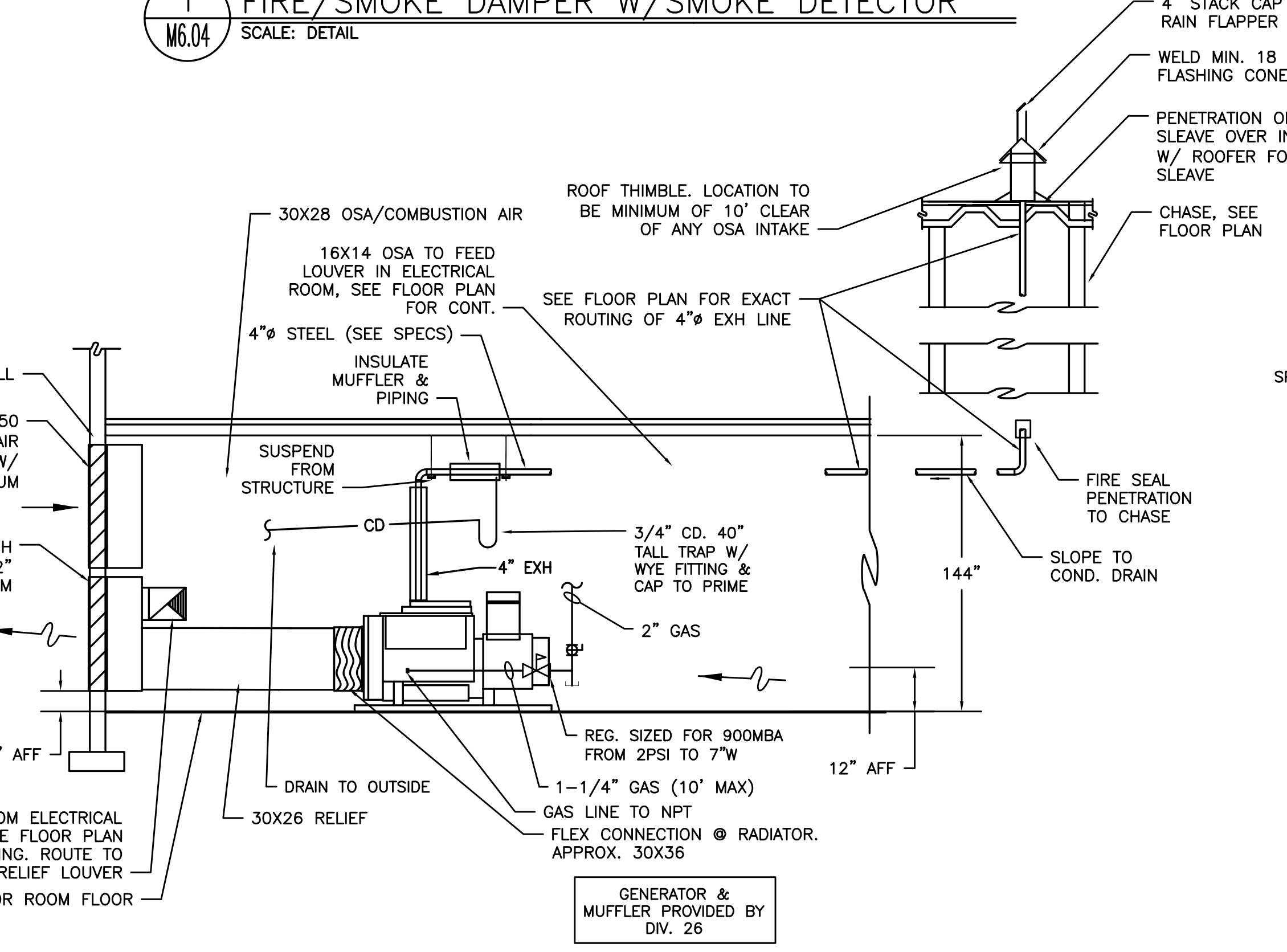
M6.04



FIRE/SMOKE DAMPER NOTE:
 PROVIDE ALL REQUIRED CONTROL WIRING TO ACCOMPLISH:
 FIRE/SMOKE DAMPER - FIRE/SMOKE DAMPER TO CLOSE UPON ACTIVATION OF LOCAL SMOKE DETECTOR (VIA FIRE ALARM)
 EXHAUST DUCTS/FANS - FIRE/SMOKE DAMPER TO CLOSE UPON SHUTDOWN OF ASSOCIATED EXHAUST FAN (VIA DDC)
 SUPPLY OR RETURN DUCTS/FANS - FIRE/SMOKE DAMPER TO CLOSE UPON SHUTDOWN OF ASSOCIATED AIR HANDLING UNIT (VIA DDC)
 AHUs OR EXHAUST FANS - AIR HANDLING UNITS TO SHUT DOWN UPON LOSS OF "PROOF OF OPEN" SIGNAL FROM DAMPER END SWITCH (VIA DDC)

1 FIRE/SMOKE DAMPER W/SMOKE DETECTOR
 SCALE: DETAIL

4 EMERGENCY GENERATOR
 SCALE: DETAIL



7 ROOFTOP UNIT #
 SCALE: DETAIL

NOT USED

RECORD DRAWING:
 THIS DRAWING HAS BEEN UPDATED TO REFLECT CHANGES MADE DURING CONSTRUCTION BASED UPON INFORMATION FURNISHED TO THE ENGINEER BY THE INSTALLATION CONTRACTOR. NO WARRANTY, EITHER EXPLICIT OR IMPLIED IS GIVEN BY MFA, INC. AS TO THE ACCURACY AND/OR COMPLETENESS OF THIS INFORMATION.

g:\dow\architect\6470_parkrose_middle_school\mech\record\drawings\complete_cad\unit_and_plate\6470-m604.mxd, Aug 30/2016 12:34 PM