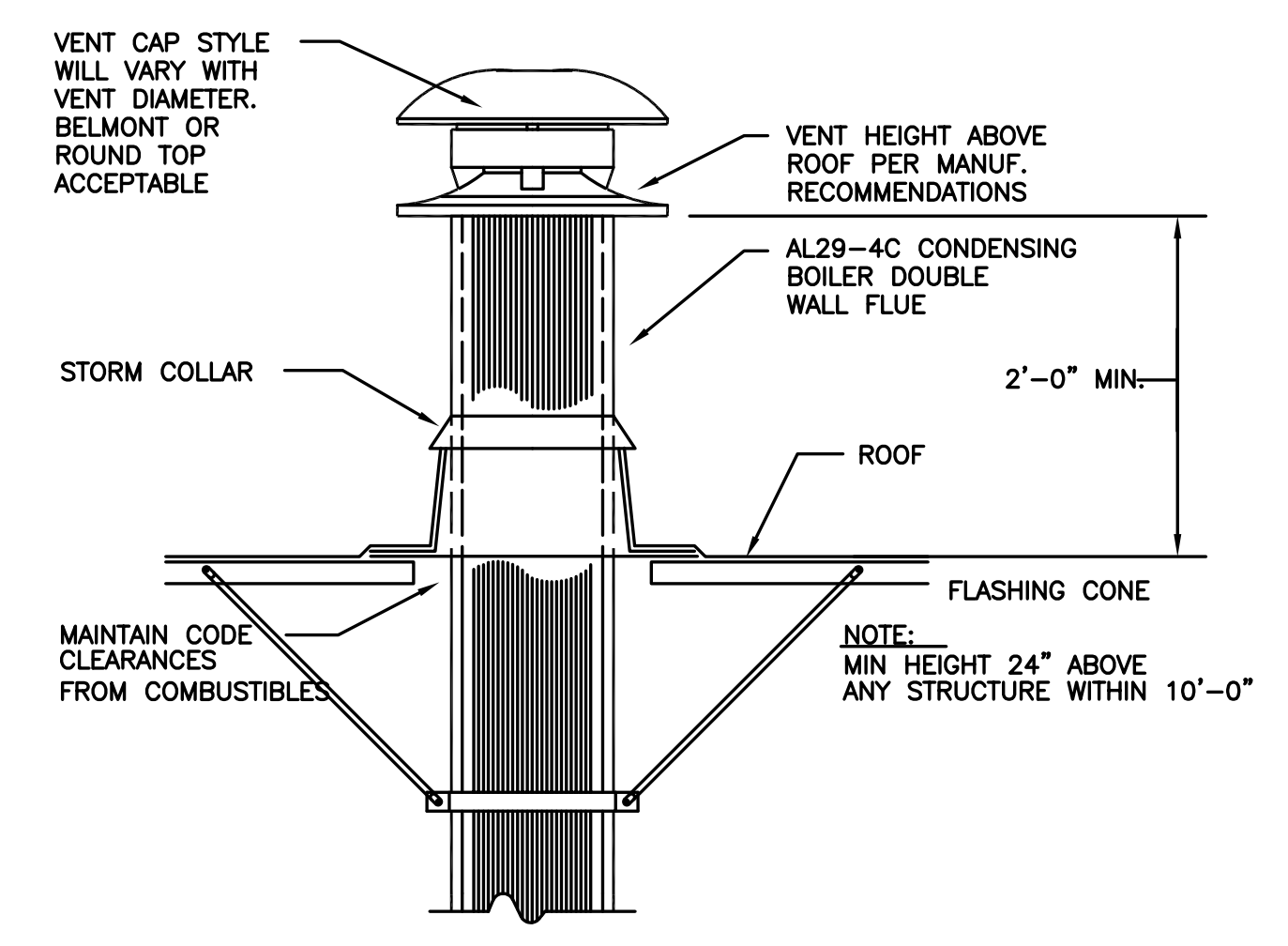
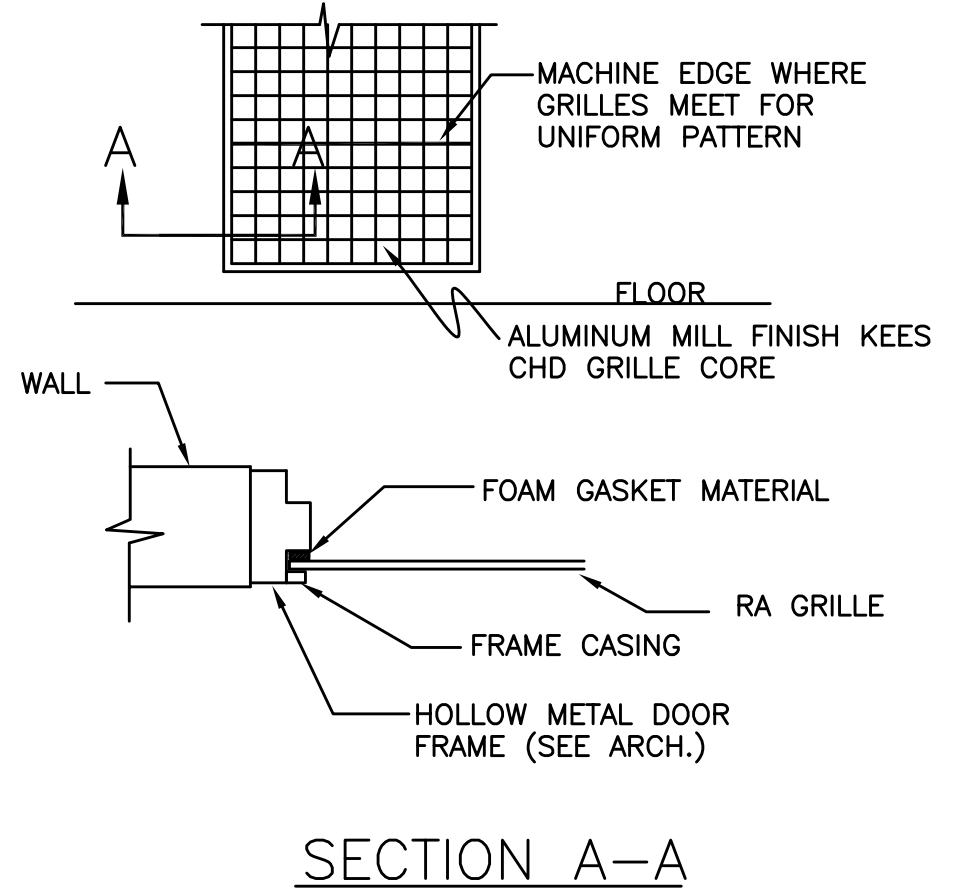


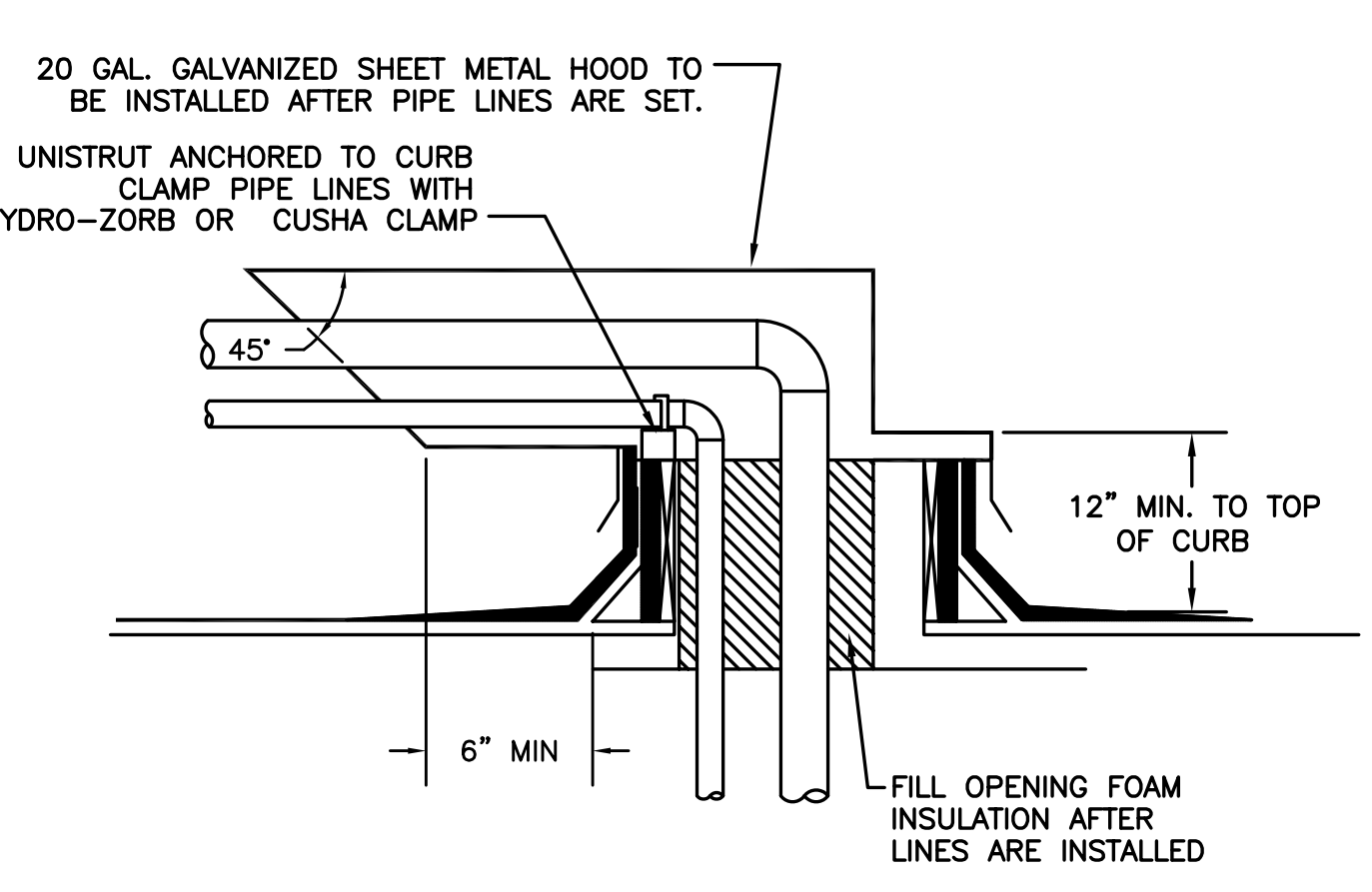
1 CONCENTRIC GAS VENT & COMBUSTION AIR INTAKE
SCALE: DETAIL



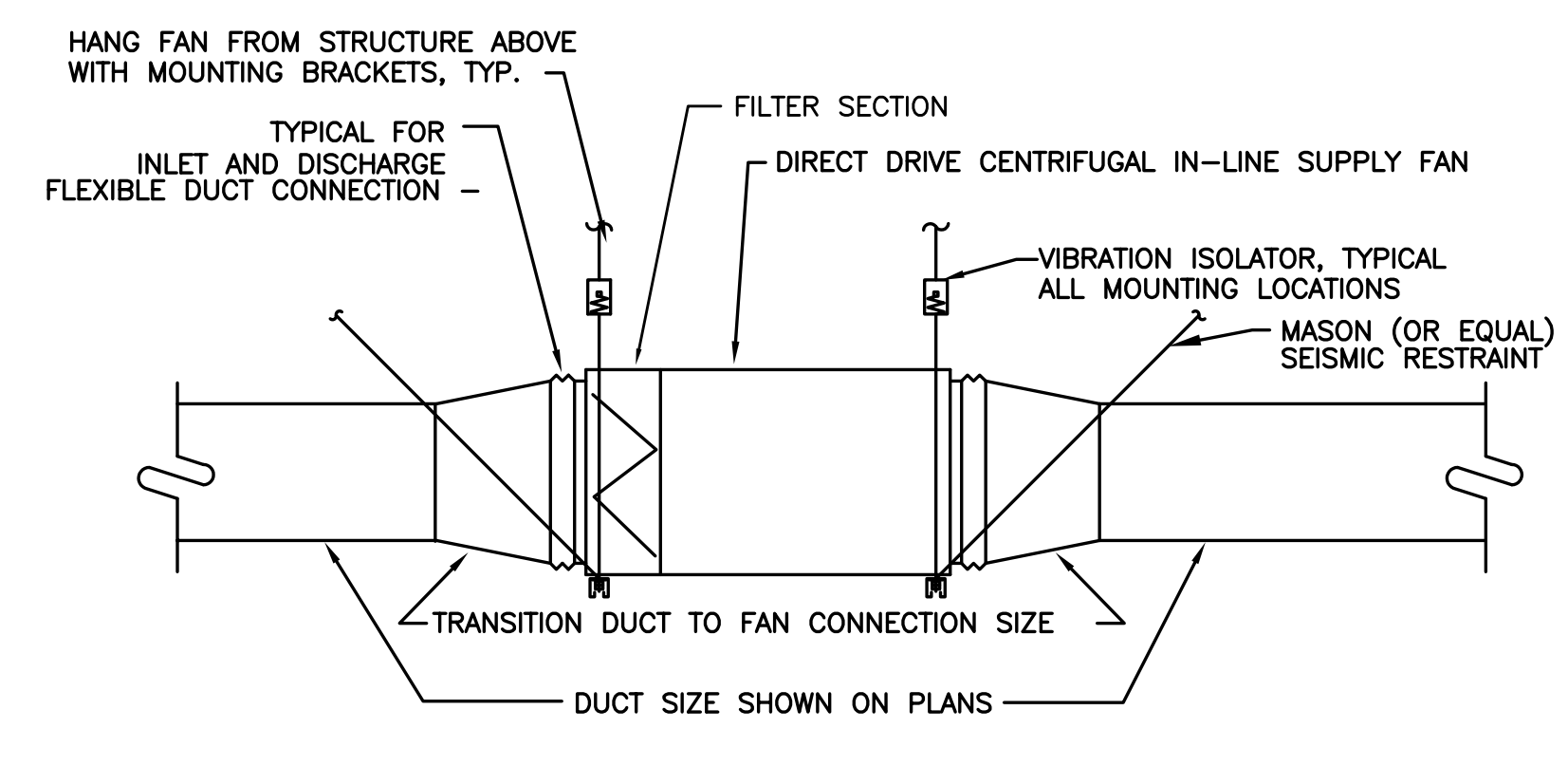
2 BOILER VENT
SCALE: DETAIL



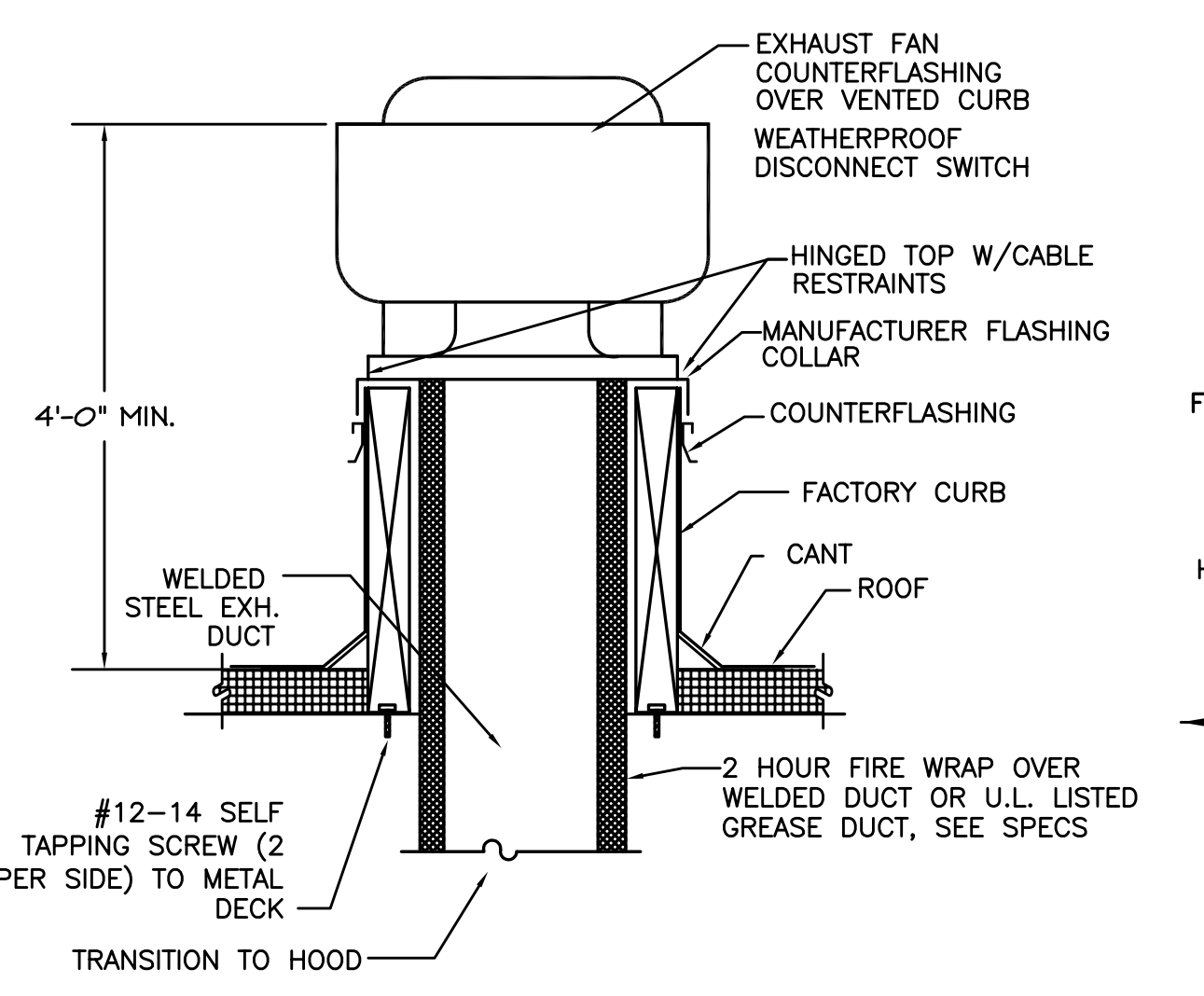
3 HEAVY DUTY LOW RETURN
SCALE: DETAIL



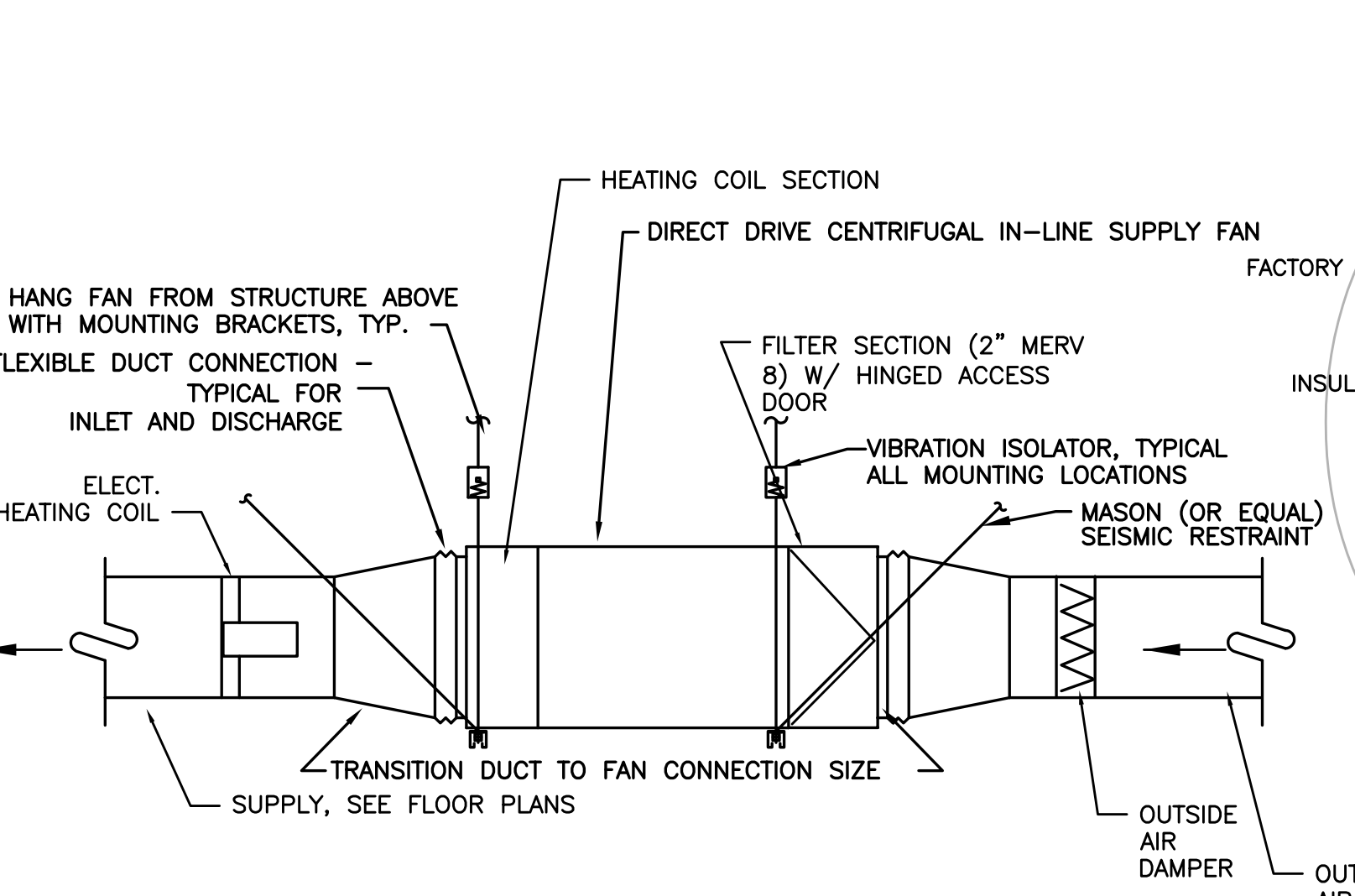
4 PIPE HOOD DETAIL
SCALE: DETAIL



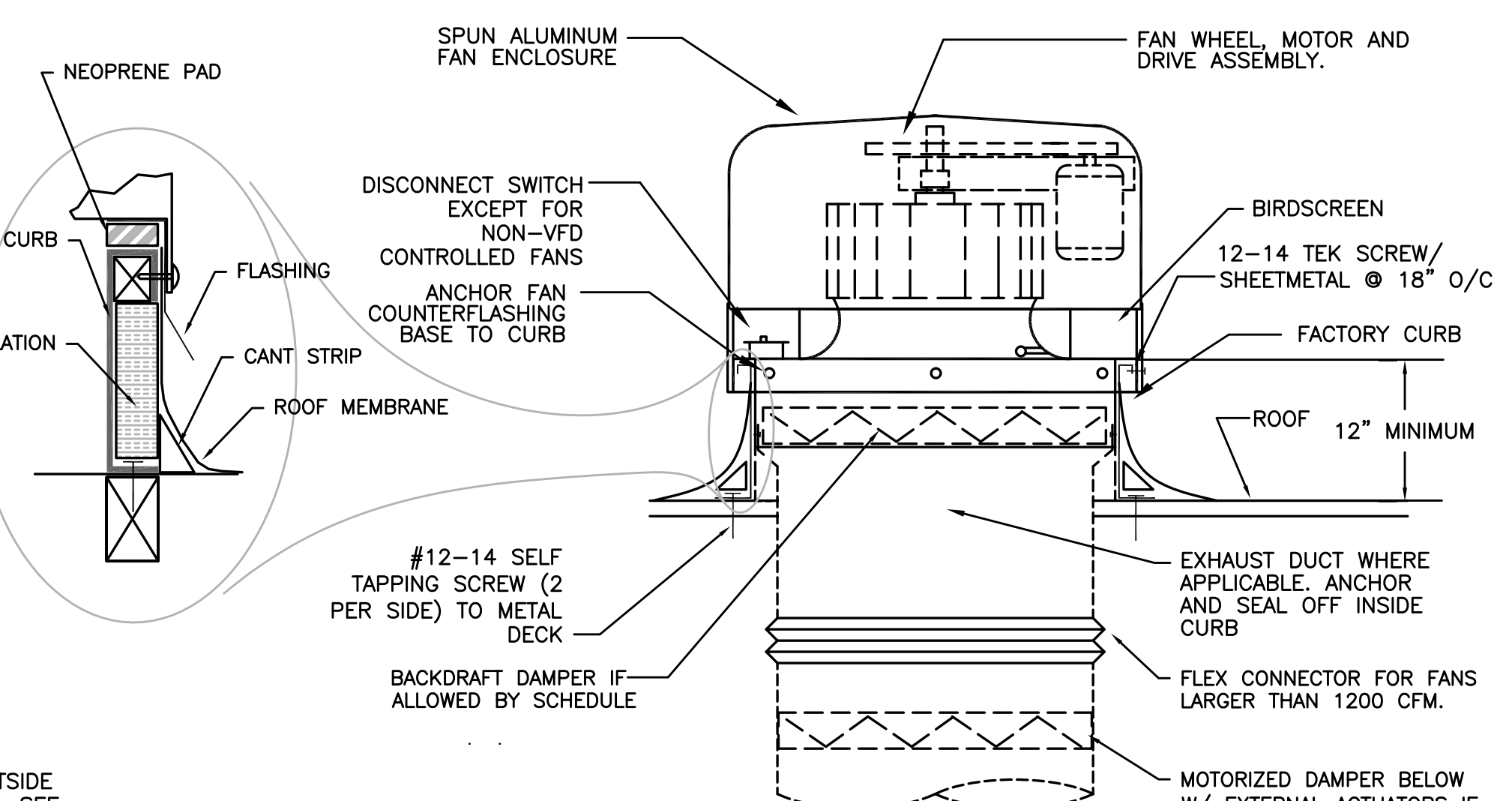
5 SUPPLY FAN (SF-1)
SCALE: DETAIL



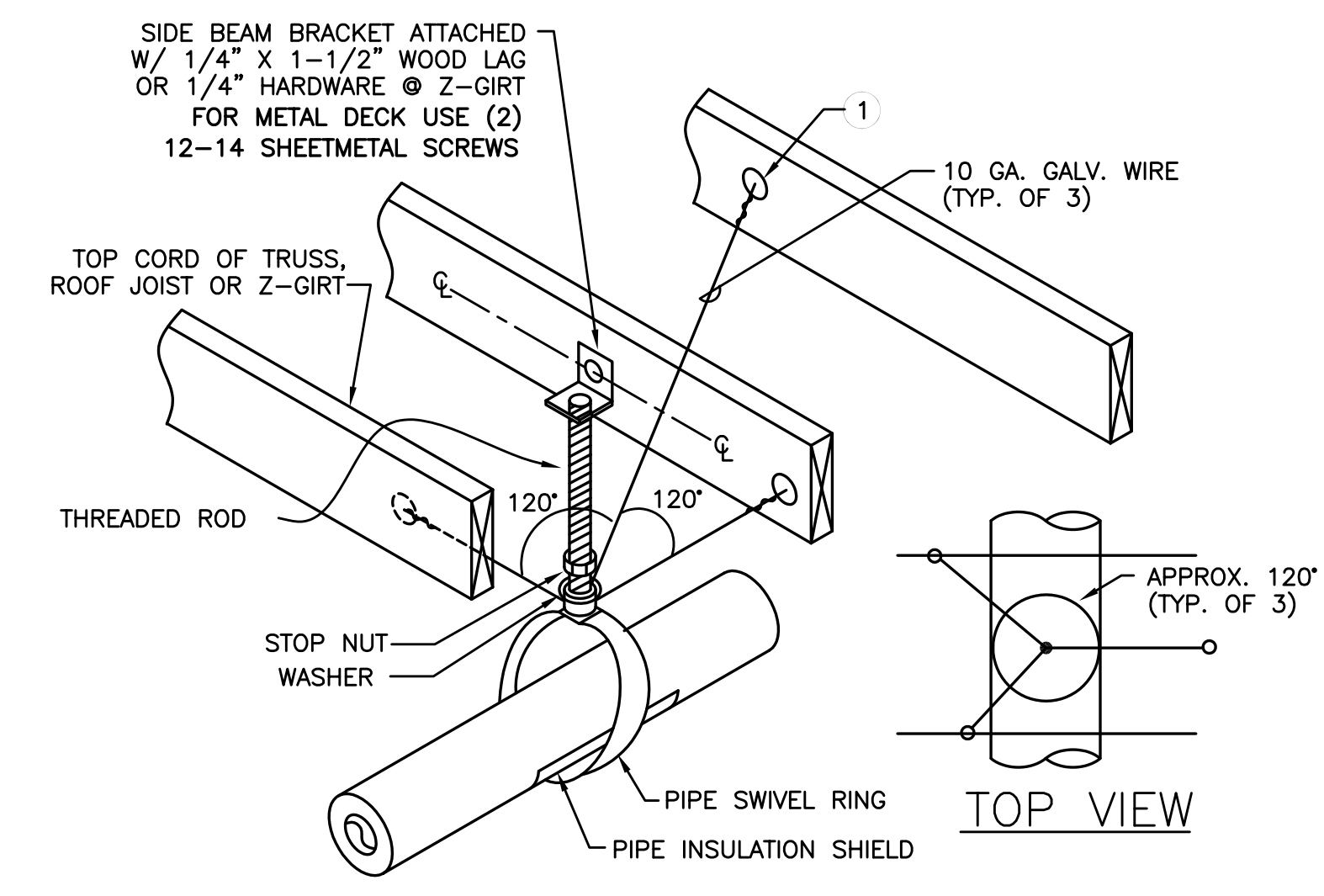
6 GREASE EXHAUST FAN
SCALE: DETAIL



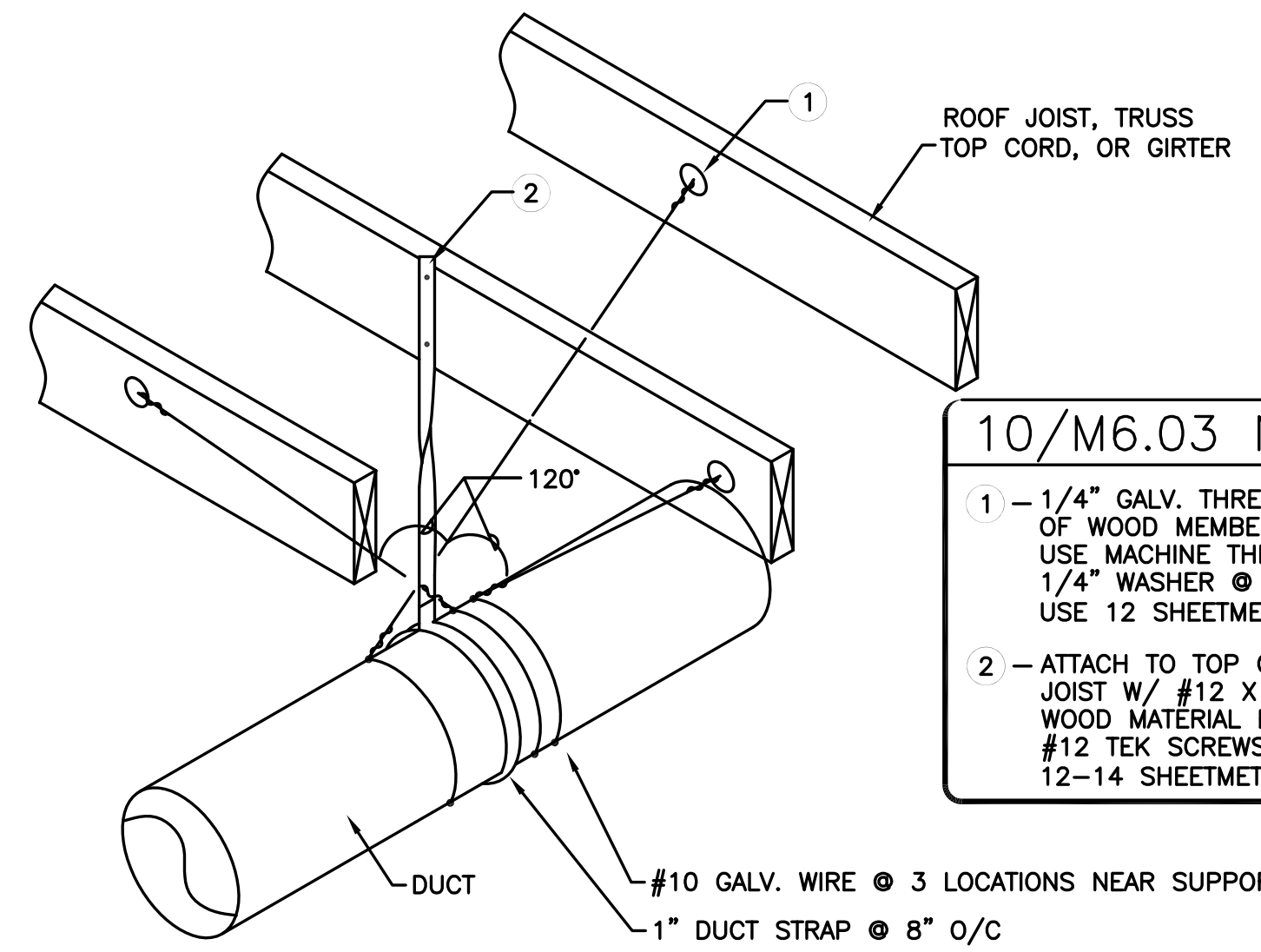
7 SUPPLY FAN (SF-2)
SCALE: DETAIL



8 ROOFTOP EXHAUST FAN
SCALE: DETAIL



9 PIPE SUPPORT
SCALE: DETAIL

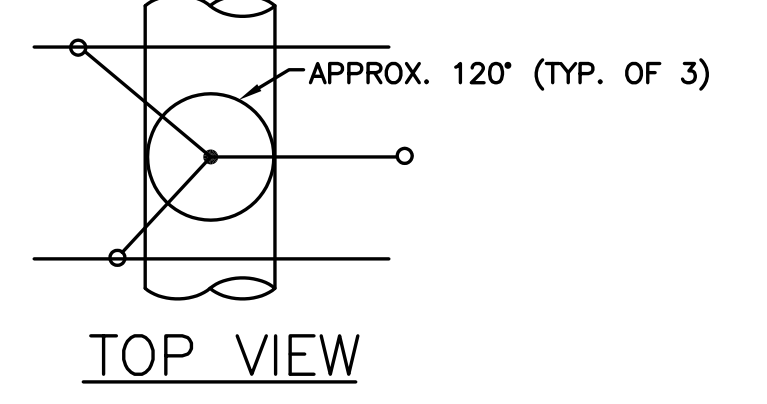


10 DUCT SUPPORT
SCALE: DETAIL

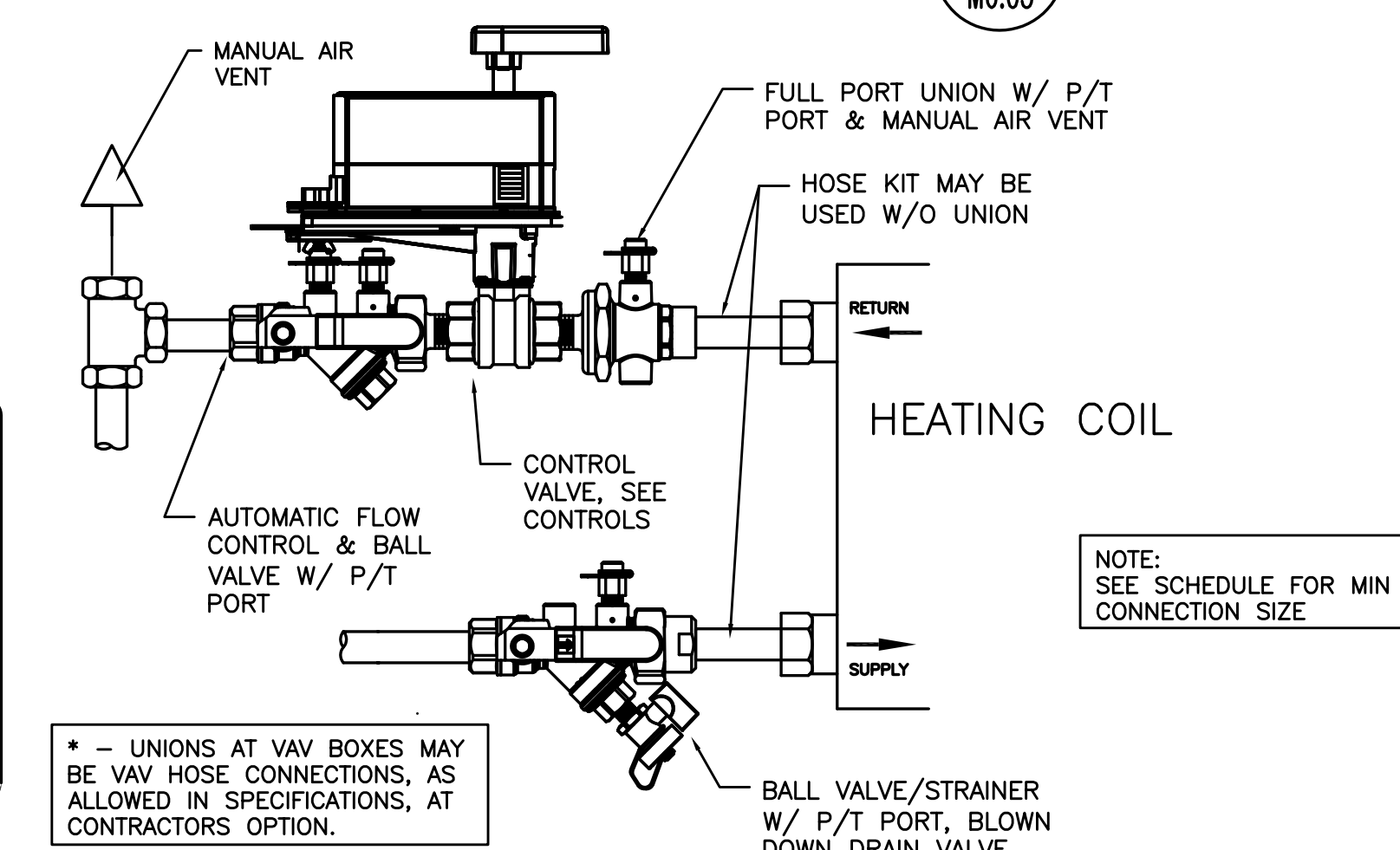
10/M6.03 NOTES

- 1 - 1/4" GALV. THREADED EYE BOLT @ CENTER OF WOOD MEMBER (TYP. OF 3). FOR Z-GIRT USE MACHINE THREAD EYE BOLT W/ JAMB NUT & 1/4" WASHER @ EACH SIDE OF GIRT. FOR METAL DECK USE 12 SHEETMETAL SCREWS & 16 GA. MIN STRUT ANGLE CLIP
- 2 - ATTACH TO TOP CORD OF TRUSS ONLY OR WOOD JOIST W/ #12 X 1-5/8 DECK SCREW @ MIN. 1" FROM WOOD MATERIAL EDGE. ATTACH TO Z-GIRT W/ (2) #12 TEK SCREWS. FOR METAL DECK USE (2) 12-14 SHEETMETAL SCREWS

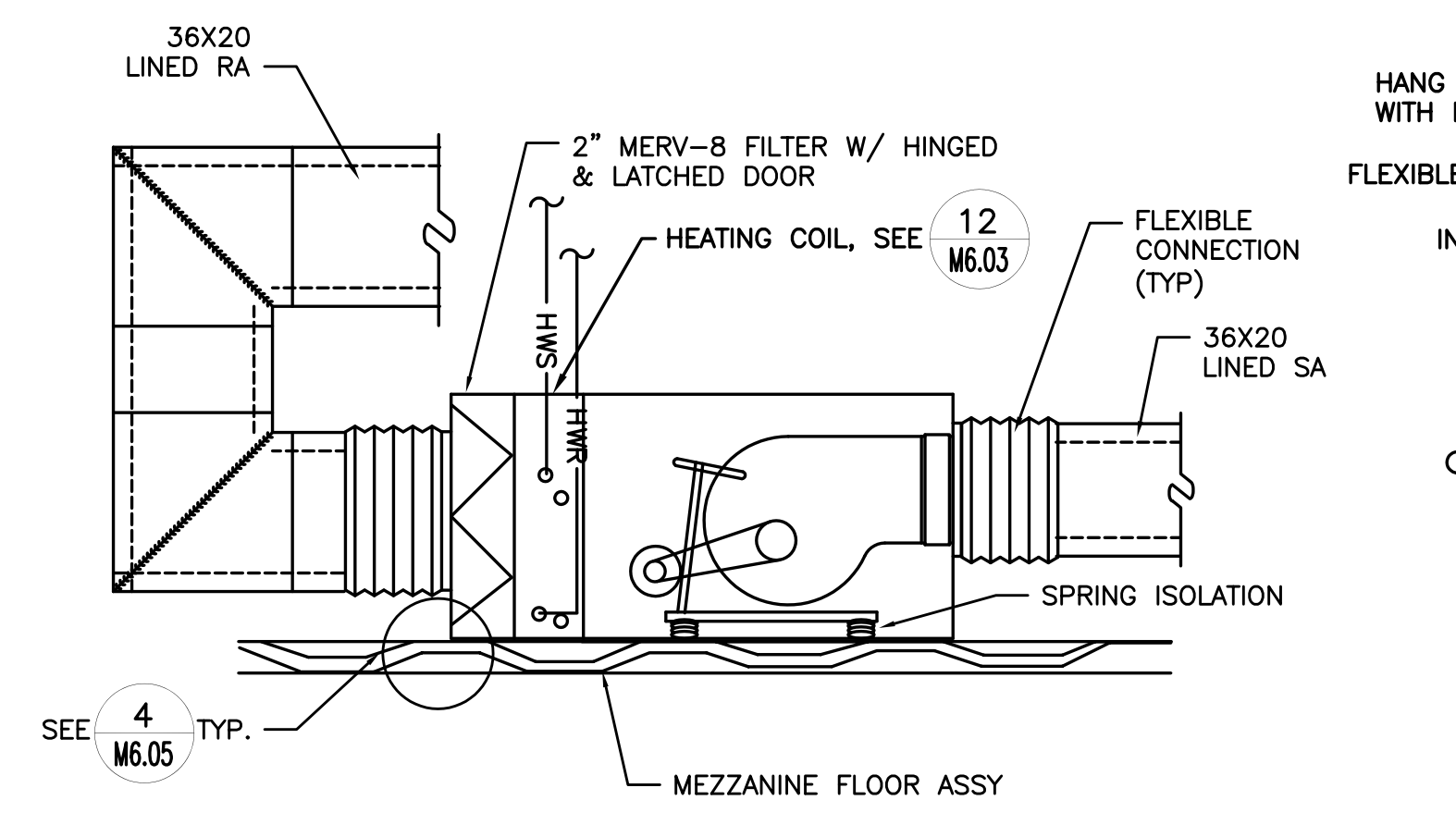
FOR SHEETMETAL DUCTS 11" TO 27" IN DIAMETER & ALL SQUARE OR RECTANGULAR DUCTS (STRAP ALONE IS SUFFICIENT FOR DUCTS SMALLER THAN 11" IN DIAMETER)
STRAP INTERVAL MAY BE DECREASED (LESS THAN 96" O/C TO REDUCE THE NEED FOR WIRE TIES AS DETAILED. CONSULT ENGINEER OR SMACNA STANDARDS



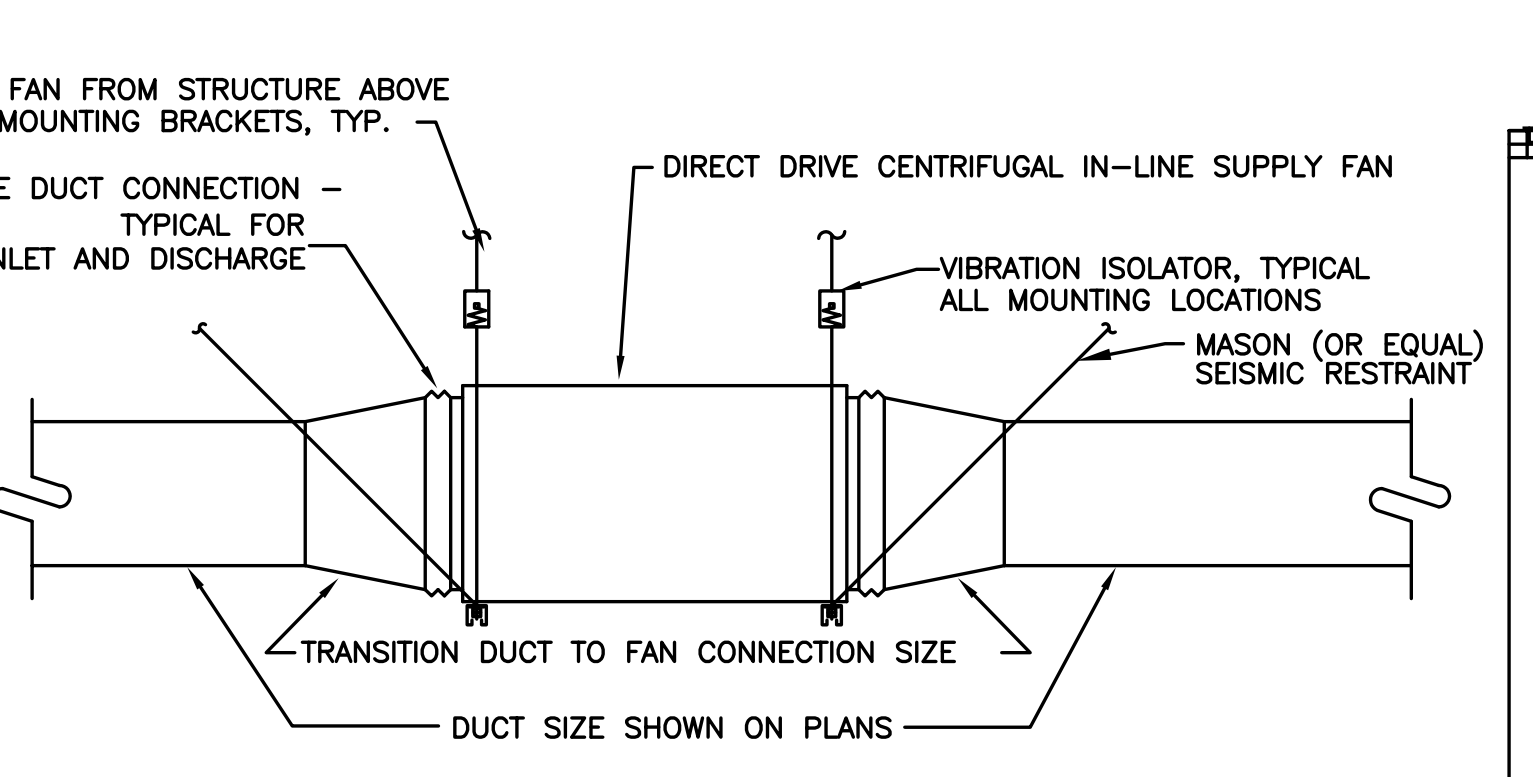
APPROX. 120° (TYP. OF 3)
TOP VIEW



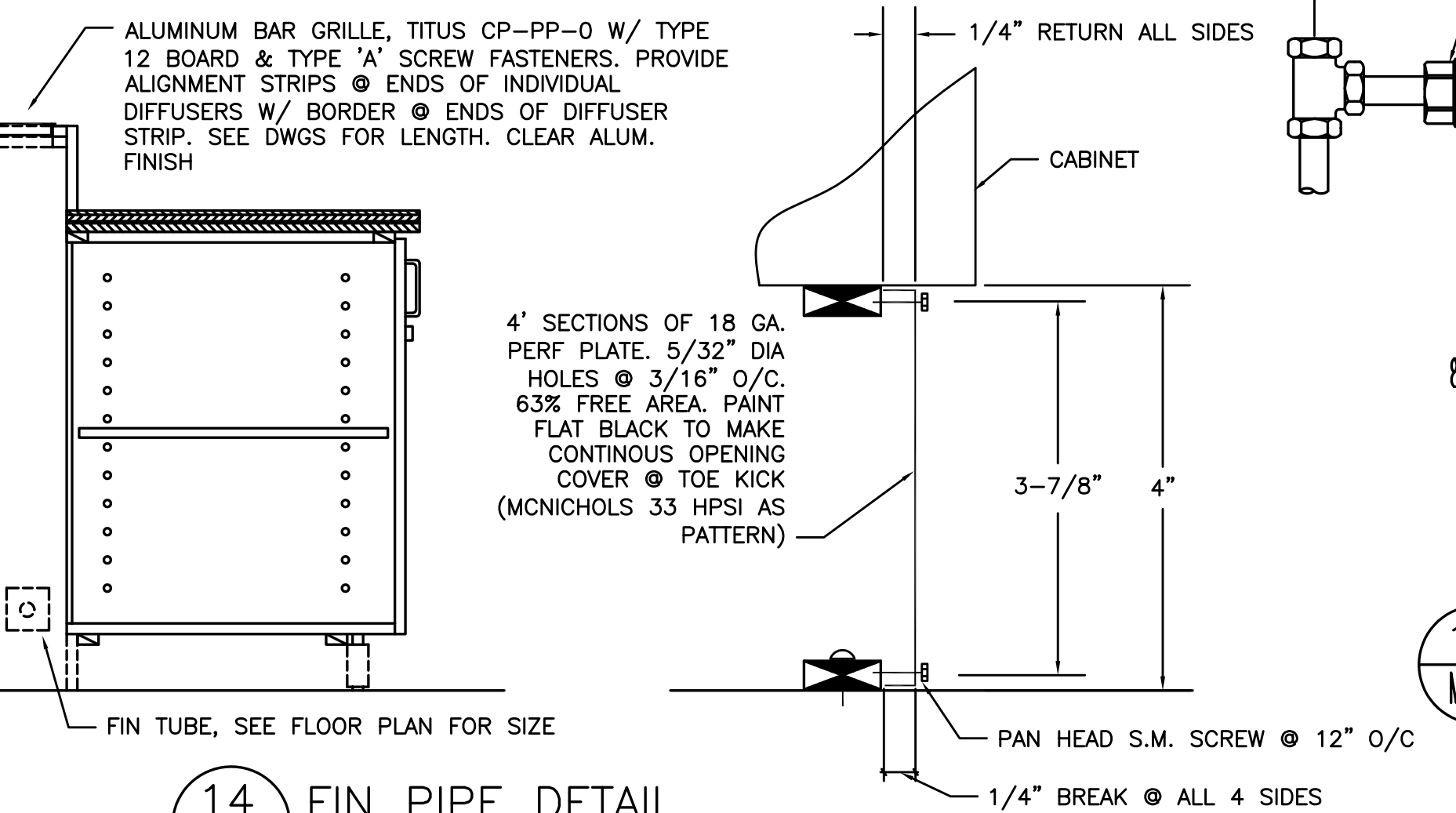
12 2-WAY HEATING COIL PIPING
SCALE: DETAIL



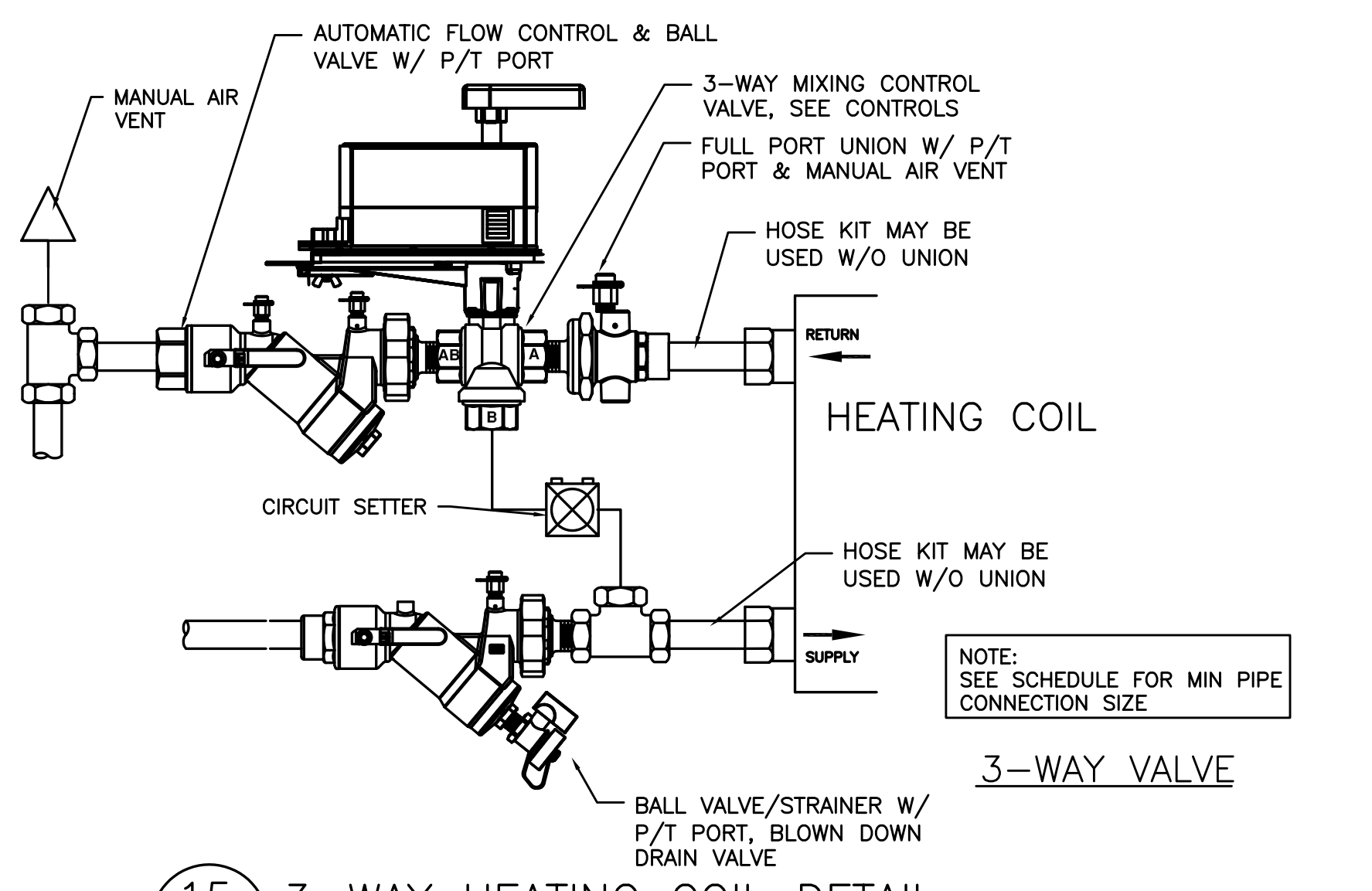
11 AHU-3 DETAIL
SCALE: DETAIL



13 SUPPLY FAN (SF-2)
SCALE: DETAIL



14 FIN PIPE DETAIL
SCALE: DETAIL



15 3-WAY HEATING COIL DETAIL
SCALE: DETAIL

RECORD DRAWING:
THIS DRAWING HAS BEEN UPDATED TO REFLECT CHANGES MADE DURING CONSTRUCTION BASED UPON INFORMATION FURNISHED TO THE ENGINEER BY THE INSTALLATION CONTRACTOR. NO WARRANTY EITHER EXPLICIT OR IMPLIED IS GIVEN BY MFA, INC. AS TO THE ACCURACY AND/OR COMPLETENESS OF THIS INFORMATION.