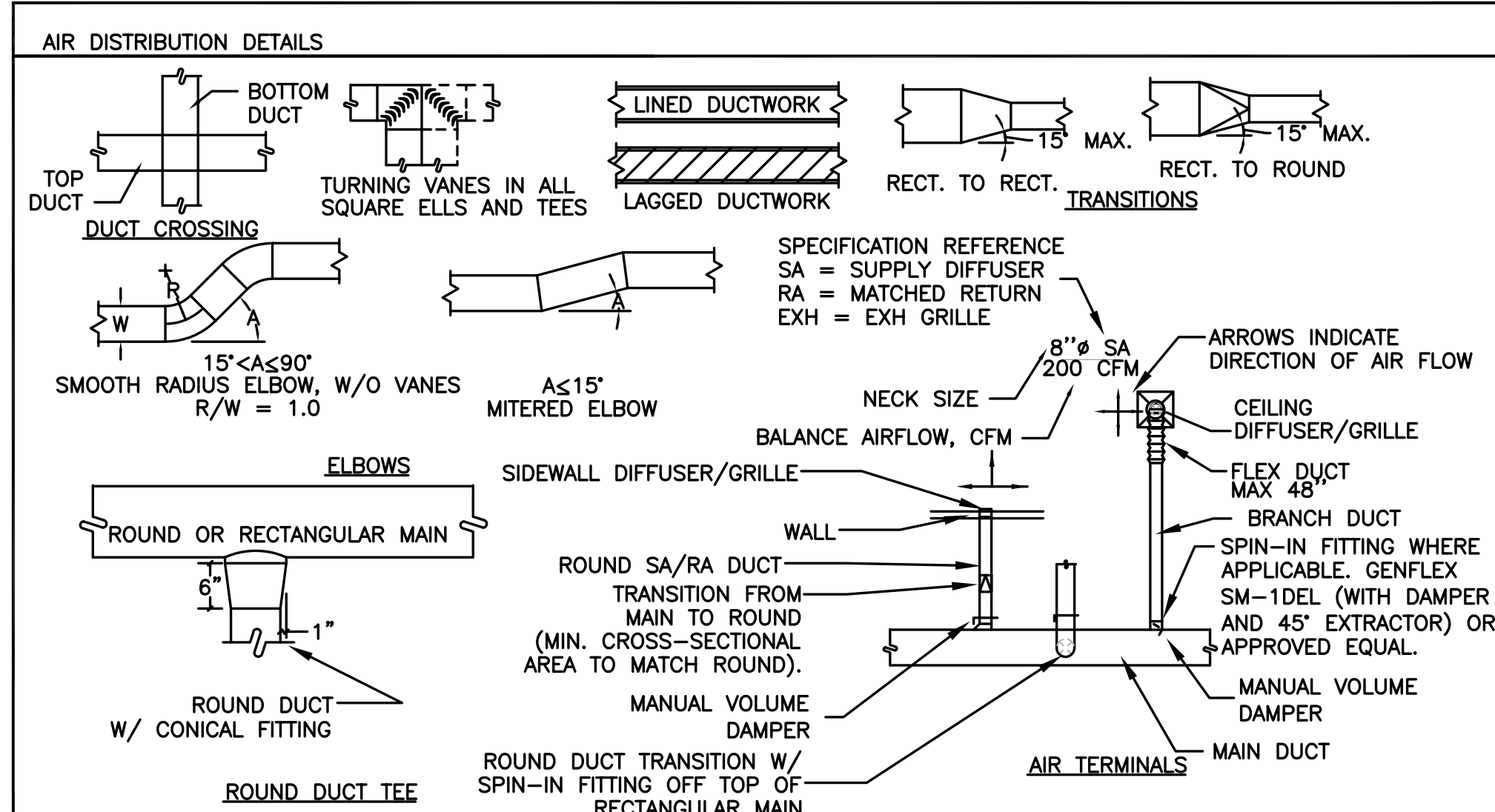


EXHAUST FANS

MARK NUMBER	EF 1-1	EF 1-2	EF 1-3	EF 1-4	EF 2-1	EF 2-2	EF 2-3	EF 2-4	EF 4-1	EF 4-2	EF 5-1	EF 5-2	EF 8-1	EF 8-2	EF 8-3	EF A1.1	EF A1.2	EF 4-3	EF 5-3	EF 8-4	EF A2	EF A2.1	
TYPE	ROOF RESTROOMS	ROOF SCIENCE ROOMS	ROOF PREP ROOMS	RESTROOMS A201/A202	ROOF RESTROOMS	ROOF SCIENCE ROOMS	ROOF PREP ROOMS	ROOF RESTROOMS	ROOF STUD/FAM/LT RR	KILN HOOD	ROOF STAFF C123	ROOF KITCHENETTE HEALTH/JAN.	ROOF GREASE RATED KITCHEN HOOD	ROOF DISHWASHER	ROOF STAFF RR/JAN	RESTROOM A22/A25	BOOSTER	INLINE					
CFM	800	3500	500	800	800	7000	500	700	825	900	100	550	3877	1000	150	140	250						
TOTAL SP. (IN H2O)	.375	.6	.75	.375	0.35	.75	.75	0.35	0.375	0.4	.25	.50	1.0	0.375	.25	0.75	1590						
RPM	1406 *	1355 **	1725 ***	1473 *	1550 *	1291 **	1725 *	1550 ***	1291 **	1473 *	1550 ***	1291 **	1725 *	1550 *	1350	1725 *							
TIP SPEED	4809	5896	4911	4911	4911	4413	4911	4413	4911	3133	4413	6250	4911	3297		3669							
DRIVE	DIRECT	BELT	DIRECT	DIRECT	DIRECT	BELT	DIRECT	DIRECT	DIRECT	DIRECT	DIRECT	DIRECT	DIRECT	DIRECT	DIRECT	DIRECT	DIRECT						
MOTOR HP	1/2	3/4	1/6	1/2	1/4	2	1/6	1/4	1/8	1/6	1/15	1-1/2	1/6	1/60	135 WATTS	1/6							
BRAKE HP	.25	1.05	.08	.08	.27	1.89	.08	1/4	.12	.01	.07	1.64	.15	.02		.04							
CONTROLLED BY	DDC	DDC	DDC	DDC	DDC	DDC	DDC	DDC	DDC	TEMP SENSOR SWITCH/DDC	DDC	DDC	SWITCH/DDC	DDC	DDC	SENSOR							
INTERLOCK WITH	RTU-1	RTU-1	RTU-1	RTU-1	RTU-2	RTU-2	RTU-2	RTU-2	RTU-4	RTU-5	RTU-5	MAU-1	RTU-8	AHU-1	DRYER (SEE FLOOR PLANS)	AHU-2							
DAMPER TYPE	MOTORIZED	MOTORIZED	MOTORIZED	MOTORIZED	MOTORIZED	MOTORIZED	MOTORIZED	MOTORIZED	MOTORIZED	MOTORIZED	MOTORIZED	MOTORIZED	MOTORIZED	MOTORIZED	MOTORIZED	MOTORIZED							
ISOLATION	EXTERNAL	EXTERNAL	EXTERNAL	EXTERNAL	EXTERNAL	EXTERNAL	EXTERNAL	EXTERNAL	EXTERNAL	EXTERNAL	EXTERNAL	EXTERNAL	EXTERNAL	EXTERNAL	EXTERNAL	EXTERNAL							
DESIGN WEIGHT (LBS)	60	83	37	151	37	151	37	23	40	15	20	120	40	15	2.4	6.4							
MAX. SONES	12.5	18.0	8.7	15.3	8.7	15.3	8.7	8.6	10.3	3.2	7.4	18.3	10.4	3.7	2.5	NO							
VFD	NO	YES	NO	NO	NO	YES	NO	NO	NO	NO	NO	YES	NO	NO	NO	NO							
BASIS OF DESIGN	GREENHECK G-123-A	GREENHECK G-090-VG	GREENHECK G-123-A	GREENHECK G-123-A	GREENHECK G-103-A	GREENHECK G-260-20	GREENHECK G-090-VG	GREENHECK G-103-A	GREENHECK G-095-D	GREENHECK G-095-D	GREENHECK G-060-D	GREENHECK G-080-D	GREENHECK G-080-D	GREENHECK G-080-D	GREENHECK G-080-D	GREENHECK G-080-D	GREENHECK G-080-D						

* PROVIDE W/ ECM MOTOR W/ INTEGRAL SPEED CONTROL *** EXTERNAL 0-10V SIGNAL TO MODULATE SPEED ECM MOTOR
 ** INVERTER RATED MOTOR



SPLIT SYSTEM COOLING

TYPE	COOLING ONLY	COOLING ONLY	COOLING ONLY	COOLING ONLY	COOLING ONLY
SYSTEM	B109 - IDF	C132 - IDF	C169 - ELEC.	MDF A26	VID PROD. C147
INDOOR UNIT MARK NUMBER	IAC 1	IAC 2	IAC 3	IAC 4	IAC 5
TYPE (INDOOR UNIT)	WALL MOUNT	WALL MOUNT	WALL MOUNT	WALL MOUNT	WALL MOUNT
OUTDOOR UNIT MARK NUMBER	OAC 1	OAC 2	OAC 3	OAC 4	OAC 5
TYPE (OUTDOOR UNIT)	ROOF MOUNT	ROOF MOUNT	ROOF MOUNT	ROOF MOUNT	ROOF MOUNT
COOLING CAPACITY (EACH)	22,000 BTU/HR	30,700 BTU/HR	22,000 BTU/HR	22,000 BTU/HR	22,000 BTU/HR
CFM (HIGH/MED/LOW)	265/385/510	350/575/760	265/385/510	265/385/510	265/385/510
EFFICIENCY (SEER)	16.0	14.5	16.0	16.0	16.0
HSFP	N/A	N/A	N/A	N/A	N/A
MAX PIPING LENGTH	100 FT.	100 FT.	100 FT.	100 FT.	100 FT.
MAX PIPING ELEV. CHANGE	50 FT.	50 FT.	50 FT.	50 FT.	50 FT.
INDOOR UNIT DESIGN WT.	37 LBS.	40 LBS.	37 LBS.	37 LBS.	37 LBS.
OUTDOOR UNIT DESIGN WT.	128 LBS.	141 LBS.	128 LBS.	128 LBS.	128 LBS.
REFRIGERANT	R-410A	R-410A	R-410A	R-410A	R-410A
CONDENSATE PUMP	NO	YES	NO	NO	NO

CABINET UNIT HEATER

MARK NUMBER	CUH 1	CUH 2
SYSTEM	C100 VESTIBULE	C135 HALL
TYPE	WALL RECESSED	CEILING
HEATING CAPACITY, MBH	9.35	9.35
OUTPUT, MBH (LOW/HIGH)	15.2/16.0	15.2/16.0
EAT, °F	60	60
LAT, °F (LOW/HIGH)	83.9/85.7	83.9/85.7
CFM (LOW/HIGH)	185/230	185/230
ENT./LVG. WATER TEMP. (°F)	140/120	140/120
WATER P.D., FT W.C.	0.15	0.15
FLOW RATE, GPM	1.64	1.64
UNIT WEIGHT, LBS	100	100
UNIT SIZE	35Lx25Hx9.5D	35Lx25Hx9.5D
BASIS OF DESIGN	STERLING RW-02	STERLING RC-02

NOTE: LOW/HIGH IS FOR FAN SPEED.

FIN PIPE RADIATION (HW)

MARK NUMBER	FP 1	FP 2	FP 3	FP 4
TYPE	BARE ELEMENT			
TOTAL CAPACITY (MBH)	8780	5850	5850	5850
ENTERING AIR TEMP. (DEG F.)	65	65	65	65
AVG WATER TEMP (DEG F.)	130	130	130	130
FIN LENGTH (FT)	18	12	9	14
# OF TIERS	1	1	1	1
FIN SIZE	4.25"	4.25"	4.25"	4.25"
FIN THICKNESS	0.032	0.032	0.032	0.032
FINES PER INCH	40	40	40	40
FLOW RATE (GPM)	0.6	0.4	0.4	0.4
PIPE SIZE	1-1/4"	1-1/4"	1-1/4"	1-1/4"
BASIS OF DESIGN	STERLING BS-SERIES			
FLUID	20% PROPYLENE GLYCOL			

AIR HANDLERS

MARK NUMBER	AHU 4
SYSTEM	HALL C149 SECTOR 'C' HEATING
TYPE	
CFM	2800
MIN OSA CFM	
EXTERNAL STATIC PRESS (" H2O)	0.25
RPM	
MOTOR H.P.	1.25
BRAKE H.P.	
ISOLATION	RIS
SHAFT GROUNDING	NO
WHEEL TYPE	FC
WHEEL DIA (")	9
SPEED CONTROLLER	NO
MIN. FILTER AREA (SQ FT)	4.0
PRIMARY FILTER TYPE	2" (MERV 13)
EXHAUST FILTER TYPE	
TYPE	
EXTERNAL STATIC PRESS (" H2O)	
RPM	
MOTOR H.P.	
BRAKE H.P.	
SHAFT GROUNDING	
WHEEL TYPE	
WHEEL DIA (")	
INTERLOCK WITH	
SPEED CONTROLLER	
SMOKE DETECTOR	NO
CONDENSING UNIT TAG	
CONDENSING UNIT WEIGHT	
REFRIGERANT	
CFM	
ENTERING AIR TEMP (°F)(DB/WB)	
LEAVING AIR TEMP (°F)(DB/WB)	
NOMINAL CAPACITY (TONS)	
SENSIBLE CAPACITY (MBH)	
EFFICIENCY EER (ARI)	
MIN FACE AREA (SQ. FT)	
MAX AIR PRESS DROP ("H2O)	
TYPE	HW
CFM	2800
UNIT SIZE (SQ FT)	
MAX FACE VELOCITY (FPM)	550
ENTERING AIR TEMP (°F)	65
LEAVING AIR TEMP (°F)	105
ENTERING WATER TEMP (°F)	140
LEAVING WATER TEMP (°F)	110
TOTAL CAPACITY (MBH)	86
FLOW RATE (GPM)	5.6
MIN ROWS	2
MAX AIR PRESS DROP ("H2O)	0.4
MAX WATER PRESS DROP (H2O)	5.0
VALVE (2-WAY / 3-WAY)	2-WAY
FLUID	***
COIL CONNECTION SIZE	
SA LEAVING AIR TEMP	
EXH AIR TEMP IN	
OSA TEMP	
MAX STATIC LOSS	
STYLE	
SA LEAVING AIR TEMP	
DESIGN TEMP OSA	
EXH. AIR TEMP	
HEAT WHEEL TOTAL EFFECTIVENESS	
BASIS OF DESIGN	DAIKIN DESTINY
DESIGN WEIGHT (LBS)	490

MARK

TYPE

SUPPLY FAN

RETURN FAN

COOLING

HEATING

HEATING

HEATING

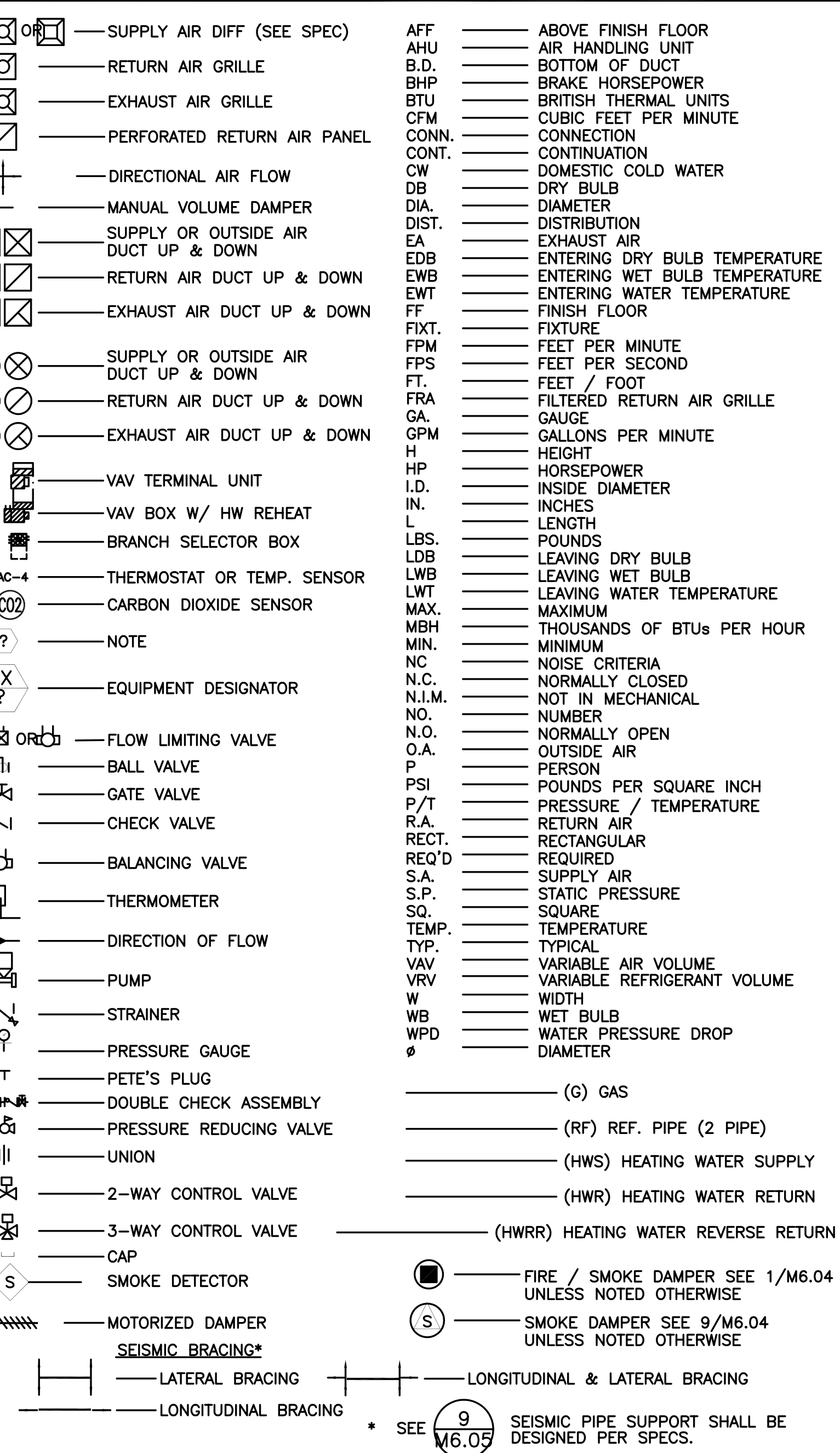
HEATING

HEATING

HEATING

HEATING

MECHANICAL LEGEND



BASEBOARD HEATER

MARK NUMBER	BB 1
TYPE	CONVECTOR BASEBOARD HEATER
WATTS	500
BTU'S/HR	
LENGTH (IN.)	36
WEIGHT (LBS.)	

DUCT HEATER

MARK NUMBER	DH 1	DH 2
SYSTEM	CUST D101	FS OFFICE D111
KW	0.6	0.6
STAGES	1	1
AIRFLOW	100	75

ROOF TOP UNITS W/ HOT WATER

MARK NUMBER	RTU 1	RTU 2	RTU 4	RTU 5
SYSTEM	CLASS/MEDIA SECTOR 'A'	CLASSROOM 'B'	ARTS/BAND SECTOR 'C'	OFFICES 'C'
TYPE	VAV W/ DISPLACEMENT	VAV W/ DISPLACEMENT	VAV W/ DISPLACEMENT	VAV W/ DISPLACEMENT
CFM	14900	17700	6100	3200
MIN OSA CFM	10,530	11,750	4,130	1,840
EXT. STATIC PRESS (" H2O)	2.5	2.5	2.25	2.5
OUTLET VELOCITY (FPM)	3296	2980	2054	1916
RPM	1453	1524	1747	1905
MOTOR H.P. & QTY	20 x 1	15 x 2	7.5 x 1	5
BRAKE H.P.	14.94	19.22	5.44	3.04
SHAFT GROUNDING	YES	YES	YES	YES
WHEEL TYPE	BI	BI	BI	BI
WHEEL DIA (")	30	27.5 x 2	22	18.5
SPEED CONTROLLER	VFD	VFD	VFD	VFD
TYPE	4" MERV 13			
CFM	14900	17700	6100	3200
RETURN	RETURN	RETURN	RETURN	EXHAUST
EXT. STATIC PRESS (" H2O)	0.75	0.75	0.5	.5
OUTLET VELOCITY (FPM)	1080	642	442	1260
RPM	1657	1338	1633	851
MOTOR H.P. & QTY	5 X 1	5 X 2	3 X 1	2 X 1
BRAKE H.P.	4.05	2.49	1.68	.87
SHAFT GROUNDING	YES	YES	NO	NO
WHEEL TYPE	AXIAL	AXIAL	FC	FC
WHEEL DIA (")	35.5 x 1	35.5 x 2	22.5	11
INTERLOCK WITH	SUPPLY	SUPPLY	SUPPLY	SUPPLY
SPEED CONTROLLER	VFD	VFD	VFD	VFD
SMOKE DETECTOR	YES	YES	YES	YES
REFRIGERANT	R-410A			
CFM</				