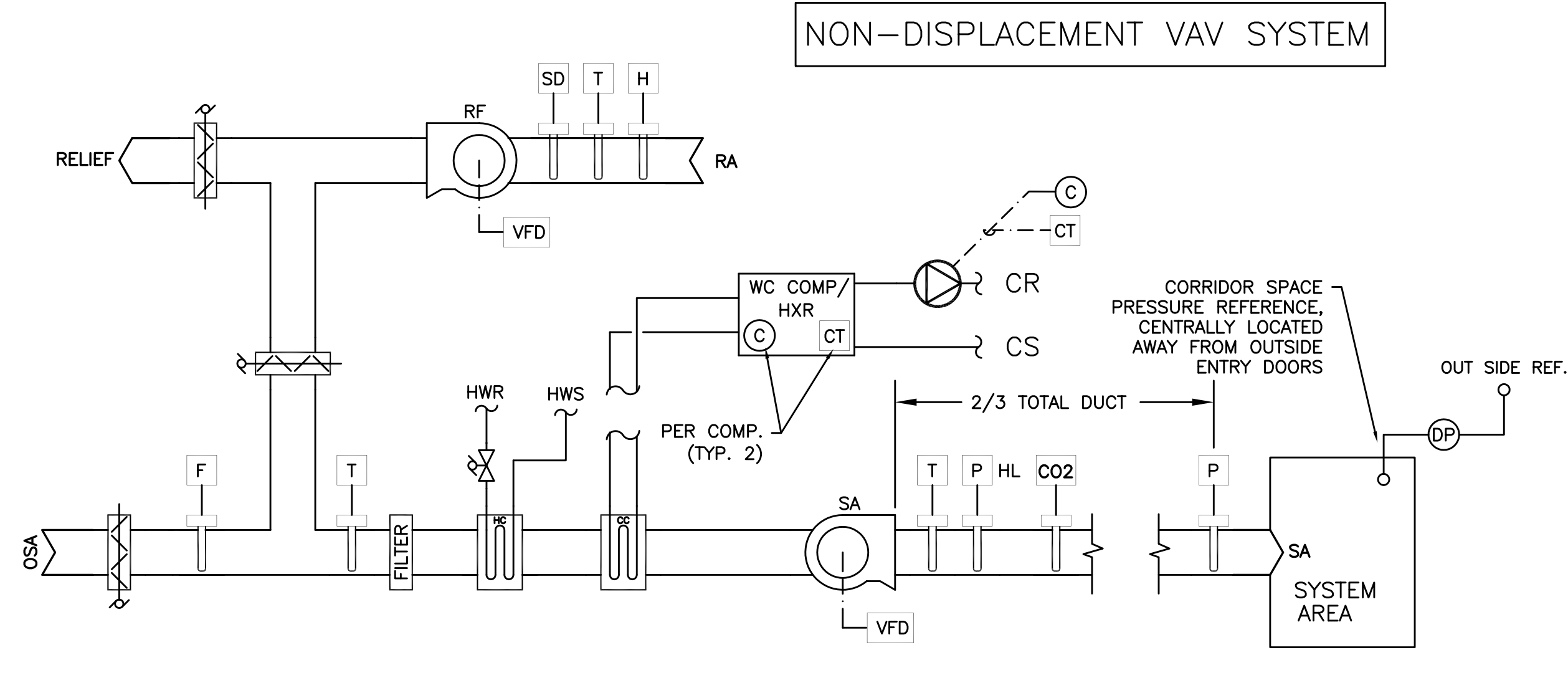
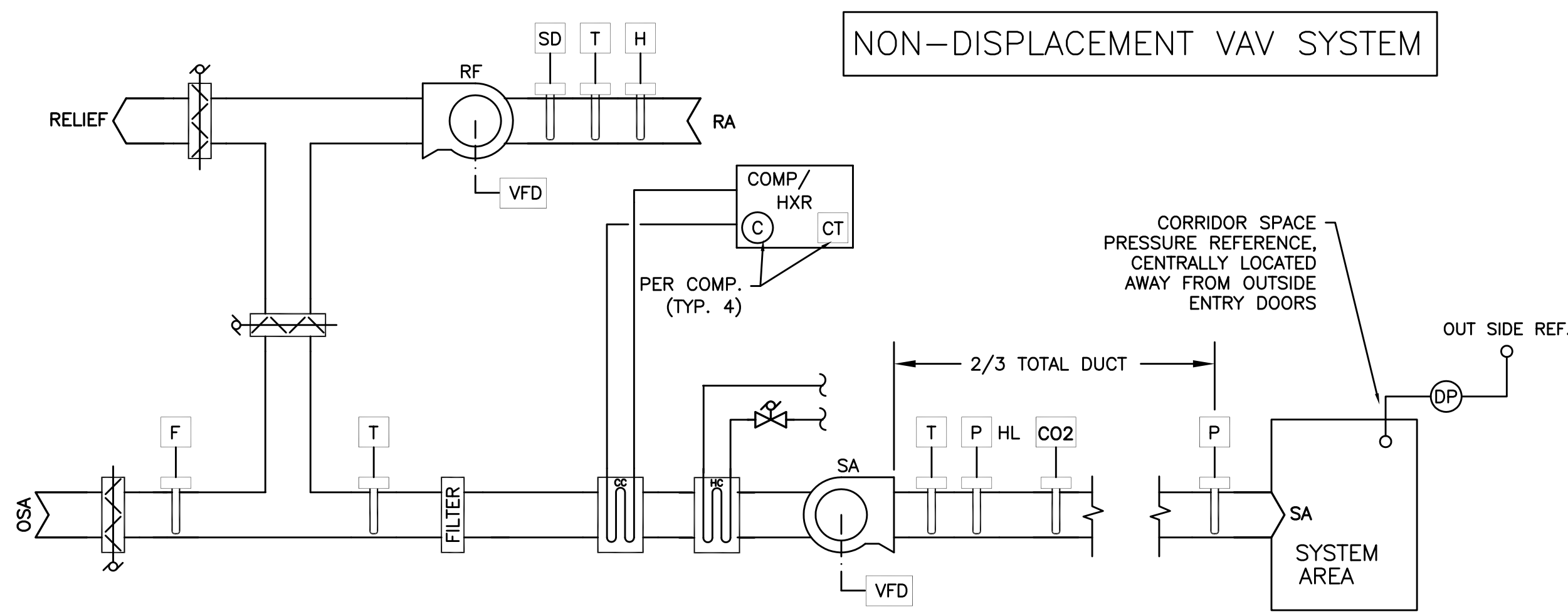


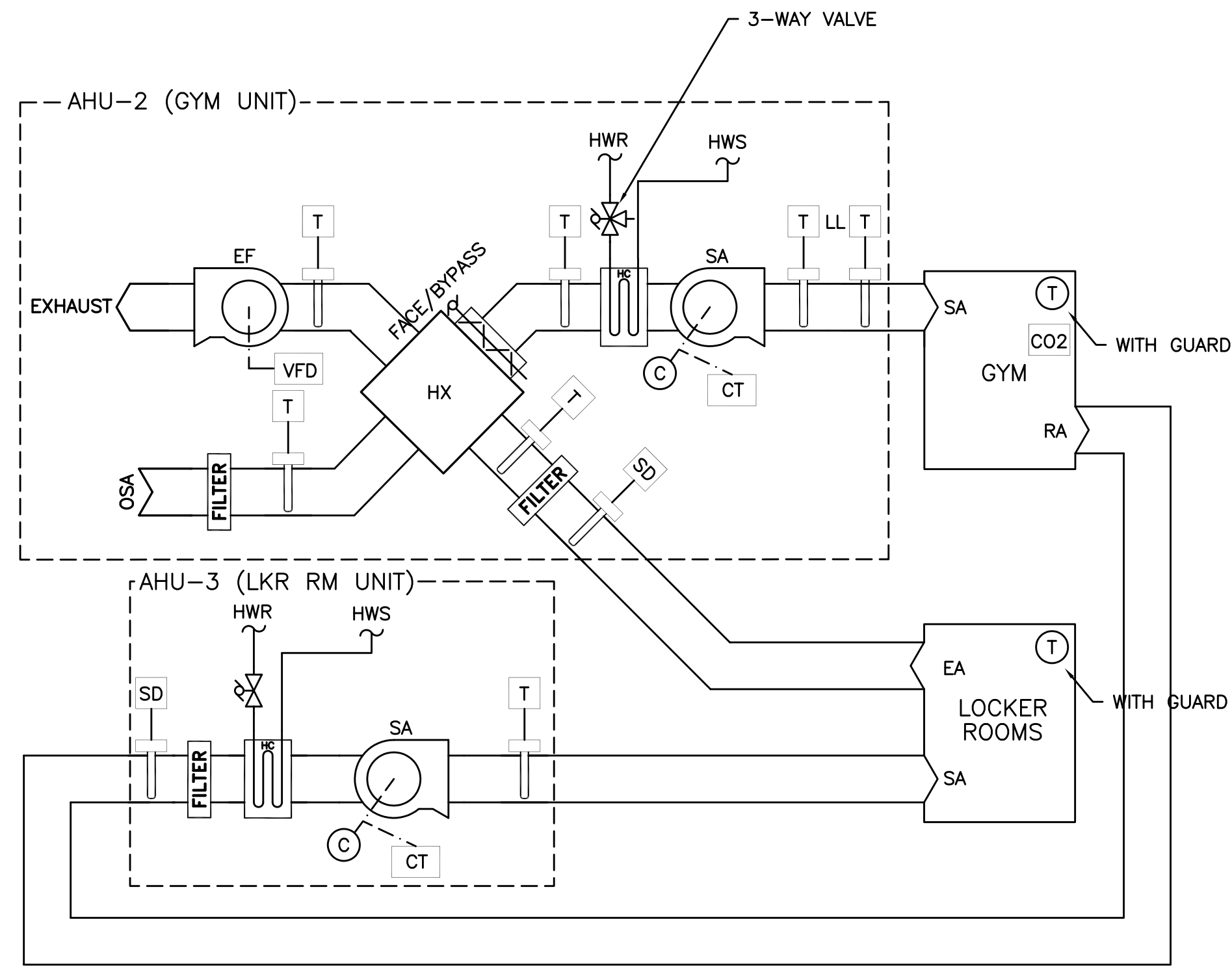
1 ROOF TOP UNIT W/ BY-PASS CONTROL DIAGRAM - RTU-1, 2, 4 & 5  
M5.01 SCALE: DETAIL



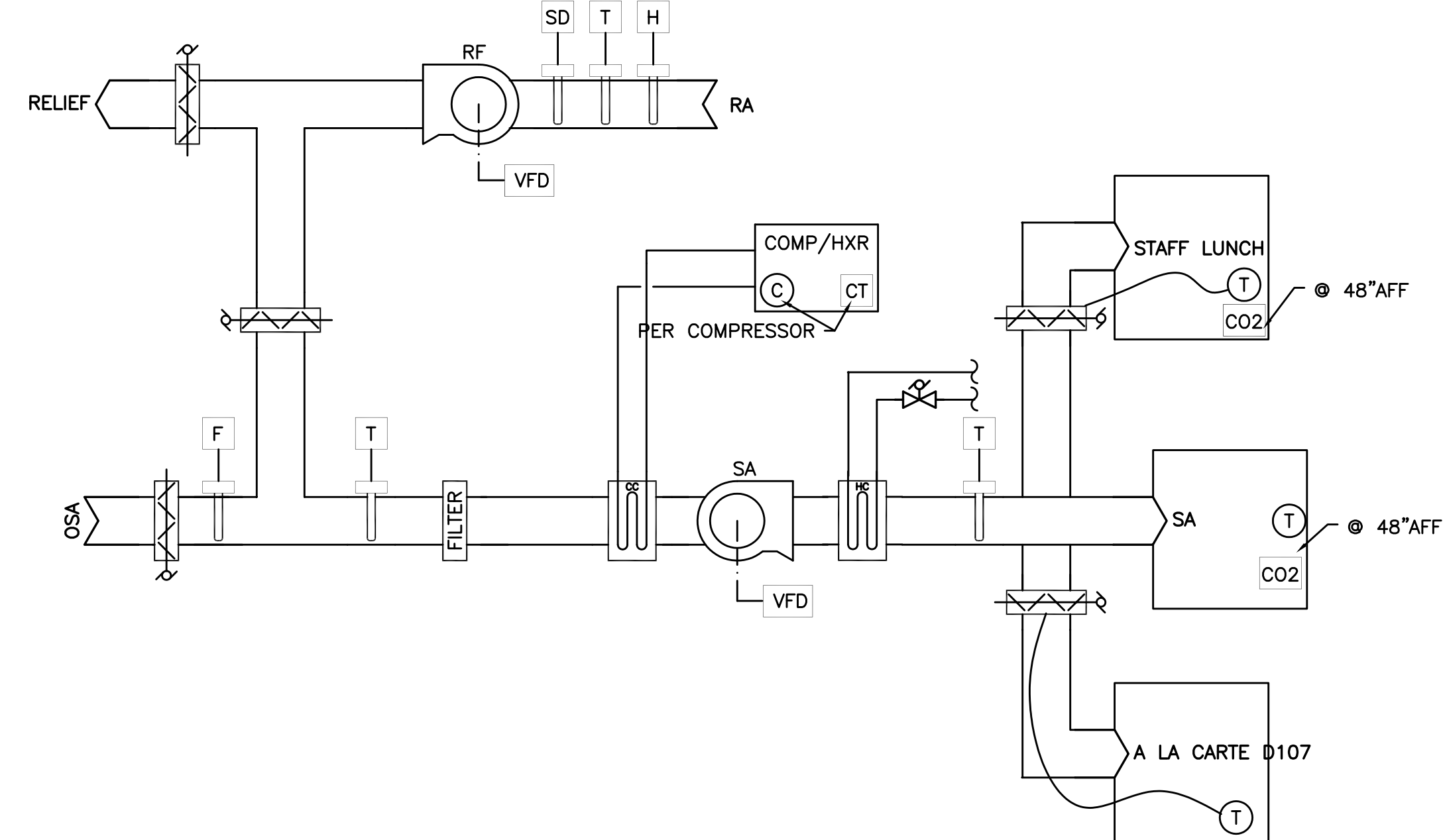
4 AIR HANDLER CONTROL DIAGRAM - AHU-1 (BASEMENT)  
M5.01 SCALE: DETAIL



2 ROOF TOP UNIT CONTROL DIAGRAM - RTU-3 (COMPUTER LAB)  
M5.01 SCALE: DETAIL



5 AIR HANDLER CONTROL DIAGRAM - AHU-2 & 3  
M5.01 SCALE: DETAIL



3 ROOF TOP UNIT CONTROL DIAGRAM - RTU-6 (COMMONS & STAGE)  
M5.01 SCALE: DETAIL

CONTROLS FOR AHU-2 SEE 4/M5.01

POINT DESCRIPTION	INPUT		OUTPUT		ALARM
	DIGITAL	ANALOG	DIGITAL	ANALOG	
SUPPLY FAN START/STOP			X		
RETURN FAN START/STOP			X		
SUPPLY FAN VFD STATUS	X				X
RETURN FAN VFD STATUS	X				X
SUPPLY FAN SPEED				X	
RETURN FAN SPEED				X	
DISCHARGE AIR TEMPERATURE		X			
MIXED AIR TEMPERATURE		X			
RETURN AIR TEMP		X			
SPACE PRESSURE		X			X
DUCT PRESSURE		X			X
DUCT PRESSURE HIGH LIMIT	X				X
SPACE CO2 LEVEL		X			X
OUTSIDE AIR FLOW		X			X
COMPRESSOR 1 SUCTION PRESSURE		X			X
COMPRESSOR 2 SUCTION PRESSURE		X			X
SMOKE DETECTOR	X				X
OUTSIDE DAMPER POSITION				X	
EXHAUST DAMPER POSITION				X	
RETURN AIR DAMPER POSITION				X	
REVERSING VALVE			X		
COMPRESSOR COMMAND (MAX. 4 COMPRESSORS)			X		
COMPRESSOR STATUS (MAX. 4 COMPRESSORS)		X			X
COMPRESSOR DEMAND MODULATION				X	
RA HUMIDITY		X			

CONTROLS FOR AHU-3 SEE 5/M5.01

POINT DESCRIPTION	INPUT		OUTPUT		ALARM
	DIGITAL	ANALOG	DIGITAL	ANALOG	
SUPPLY FAN START/STOP			X		
SUPPLY FAN STATUS	X				X
DISCHARGE AIR TEMPERATURE		X			
SMOKE DETECTOR (AHU-2)	X				X
HEATING VALVE				X	
SPACE TEMPERATURE		X			

CONTROLS FOR RTU W/ BY-PASS SEE 1/M5.01

POINT DESCRIPTION	INPUT		OUTPUT		ALARM
	DIGITAL	ANALOG	DIGITAL	ANALOG	
SUPPLY FAN START/STOP			X		
RETURN FAN START/STOP			X		
SUPPLY FAN VFD STATUS	X				X
RETURN FAN VFD STATUS	X				X
SUPPLY FAN SPEED				X	
RETURN FAN SPEED				X	
DISCHARGE AIR TEMPERATURE		X			
MIXED AIR TEMPERATURE		X			
RETURN AIR TEMP		X			
DISCHARGE AIR HUMIDITY		X			X
SPACE PRESSURE		X			X
DUCT PRESSURE		X			X
DUCT PRESSURE HIGH LIMIT	X				X
SUPPLY AIR CO2 LEVEL		X			X
OUTSIDE AIR FLOW		X			X
COMPRESSOR 1 SUCTION PRESSURE		X			X
COMPRESSOR 2 SUCTION PRESSURE		X			X
SMOKE DETECTOR	X				X
OUTSIDE DAMPER POSITION				X	
EXHAUST DAMPER POSITION				X	
RETURN AIR DAMPER POSITION				X	
BYPASS DAMPER				X	
COMPRESSOR COMMAND (MAX. 4 COMPRESSORS)			X		
COMPRESSOR STATUS (MAX. 4 COMPRESSORS)		X			X
COMPRESSOR DEMAND MODULATION				X	
HEATING VALVE				X	
RA HUMIDITY		X			

CONTROLS FOR RTU-3, SEE 2/M5.01

POINT DESCRIPTION	INPUT		OUTPUT		ALARM
	DIGITAL	ANALOG	DIGITAL	ANALOG	
SUPPLY FAN START/STOP			X		
RETURN FAN START/STOP			X		
SUPPLY FAN VFD STATUS	X				X
RETURN FAN VFD STATUS	X				X
SUPPLY FAN SPEED				X	
RETURN FAN SPEED				X	
DISCHARGE AIR TEMPERATURE		X			
MIXED AIR TEMPERATURE		X			
RETURN AIR TEMP		X			
SPACE PRESSURE		X			X
DUCT PRESSURE		X			X
DUCT PRESSURE HIGH LIMIT	X				X
SUPPLY AIR CO2 LEVEL		X			X
OUTSIDE AIR FLOW		X			X
COMPRESSOR 1 SUCTION PRESSURE		X			X
COMPRESSOR 2 SUCTION PRESSURE		X			X
SMOKE DETECTOR	X				X
OUTSIDE DAMPER POSITION				X	
EXHAUST DAMPER POSITION				X	
RETURN AIR DAMPER POSITION				X	
REVERSING VALVE			X		
COMPRESSOR COMMAND (MAX. 4 COMPRESSORS)			X		
COMPRESSOR STATUS (MAX. 4 COMPRESSORS)		X			X
COMPRESSOR DEMAND MODULATION				X	
HEATING VALVE				X	
RA HUMIDITY		X			

CONTROLS FOR RTU-6 SEE 3/M5.01

POINT DESCRIPTION	INPUT		OUTPUT		ALARM
	DIGITAL	ANALOG	DIGITAL	ANALOG	
SUPPLY FAN START/STOP			X		
RETURN FAN START/STOP			X		
SUPPLY FAN VFD STATUS	X				X
RETURN FAN VFD STATUS	X				X
SUPPLY FAN SPEED				X	
RETURN FAN SPEED				X	
DISCHARGE AIR TEMPERATURE		X			
MIXED AIR TEMPERATURE		X			
RETURN AIR TEMP		X			
SPACE TEMPERATURE		X			
COMPRESSOR 1 SUCTION PRESSURE		X			X
COMPRESSOR 2 SUCTION PRESSURE		X			X
SMOKE DETECTOR	X				X
OUTSIDE DAMPER POSITION				X	
EXHAUST DAMPER POSITION				X	
RETURN AIR DAMPER POSITION				X	
REVERSING VALVE			X		
COMPRESSOR COMMAND (MAX. 2 COMPRESSORS)			X		
COMPRESSOR STATUS (MAX. 2 COMPRESSORS)		X			X
COMPRESSOR DEMAND MODULATION				X	
CO2 SENSOR (2)		X			X
HEATING VALVE				X	
RA HUMIDITY		X			
A LA CARTE DAMPER/STAFF LUNCH DAMPER				X	

CONTROLS FOR AHU-2 SEE 5/M5.01

POINT DESCRIPTION	INPUT		OUTPUT		ALARM
	DIGITAL	ANALOG	DIGITAL	ANALOG	
SUPPLY FAN START/STOP			X		
EXHAUST FAN START/STOP			X		
SUPPLY FAN STATUS	X				X
EXHAUST FAN STATUS	X				X
DISCHARGE AIR TEMPERATURE		X			
OSA PRE-HX AIR TEMPERATURE		X			
OSA POST-HX AIR TEMP		X			
EXH PRE-HX AIR TEMPERATURE		X			
EXH POST-HX AIR TEMPERATURE		X			
FACE/BYPASS DAMPER POSITION			X		
SMOKE DETECTOR (AHU-3)	X				X
HEATING VALVE				X	
SPACE TEMPERATURE		X			
COIL FREEZE STAT		X			

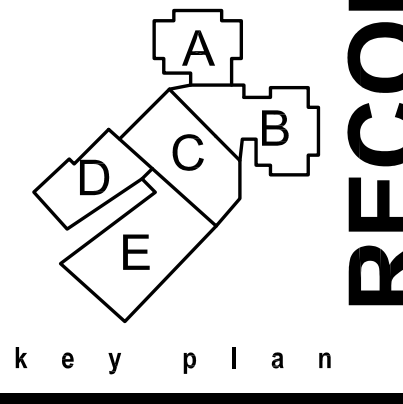
RECORD DRAWING:  
THIS DRAWING HAS BEEN UPDATED TO REFLECT CHANGES MADE DURING CONSTRUCTION BASED UPON INFORMATION FURNISHED TO THE ENGINEER BY THE INSTALLATION CONTRACTOR. NO WARRANTY, EITHER EXPLICIT OR IMPLIED IS GIVEN BY MFA, INC. AS TO THE ACCURACY AND/OR COMPLETENESS OF THIS INFORMATION.



Dull Olson Weekes - IBI Group  
907 SW 5th Street, Portland, OR 97204  
tel 503 226 6950  
9192  
www.dowa-ibigroup.com  
www.ibigroup.com

NEW PARKROSE MIDDLE SCHOOL - PACKAGE 2  
Parkrose School District  
Project Address: 11800 NE Shaver Street, Portland, OR 97220  
t: (503) 408-2900 f: (503) 408-2998

MFA INC. Consulting Engineers  
3007 S.E. Ash St  
Portland, OR 97214  
PH: (503) 234-0548  
FAX: (503) 234-0677  
WWW.MFA-ENG.COM  
CONTACT: ANTONIO JOHNSON



RECORD DRAWINGS

phase | RECORD DRAWING  
date | 11/09/2015  
revisions |  
project # | 11082

MECHANICAL CONTROLS

M5.01

g:\dowa\architects\6470\_parkrose\_midschool\mech\record\drawings\complete - call user.pdf\6470-m500\_m501\_m502\_m503.dwg 10/20/2016 11:57 AM