

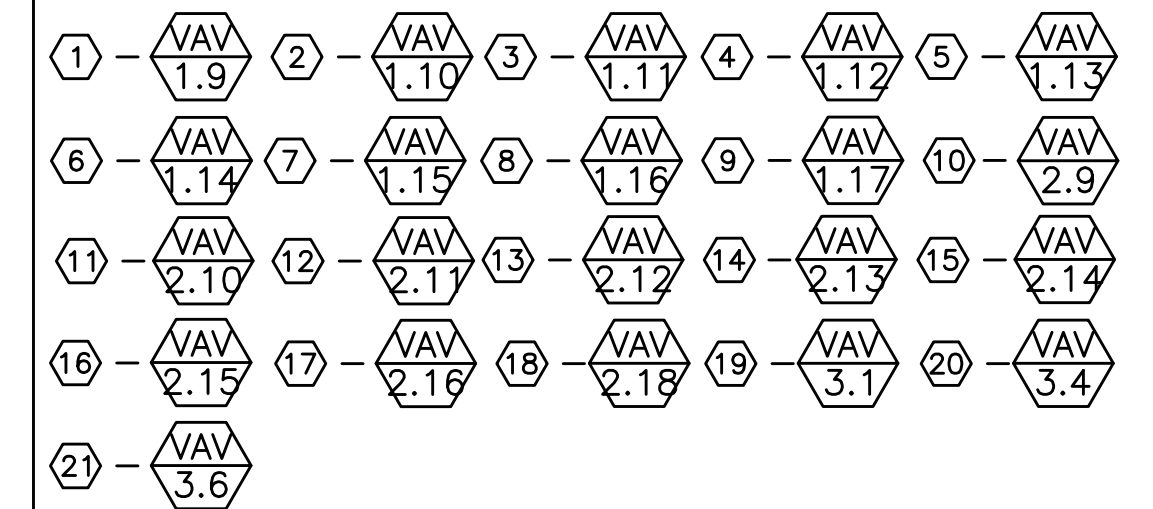
M3.21, M3.22 SHEET NOTES:

- (A) - FIRE SEAL PENETRATION.
- (B) - HWRR TO FP-1 FROM BELOW.
- (C) - HWRR TO FP-2 FROM BELOW.
- (D) - HWRR TO RU-2 FROM BELOW.
- (E) - HWRR TO RU-3 FROM BELOW.
- (F) - HWRR TO RU-4 FROM BELOW.
- (G) - 1/2" HWS FROM BELOW TO SERVE RADIATOR.

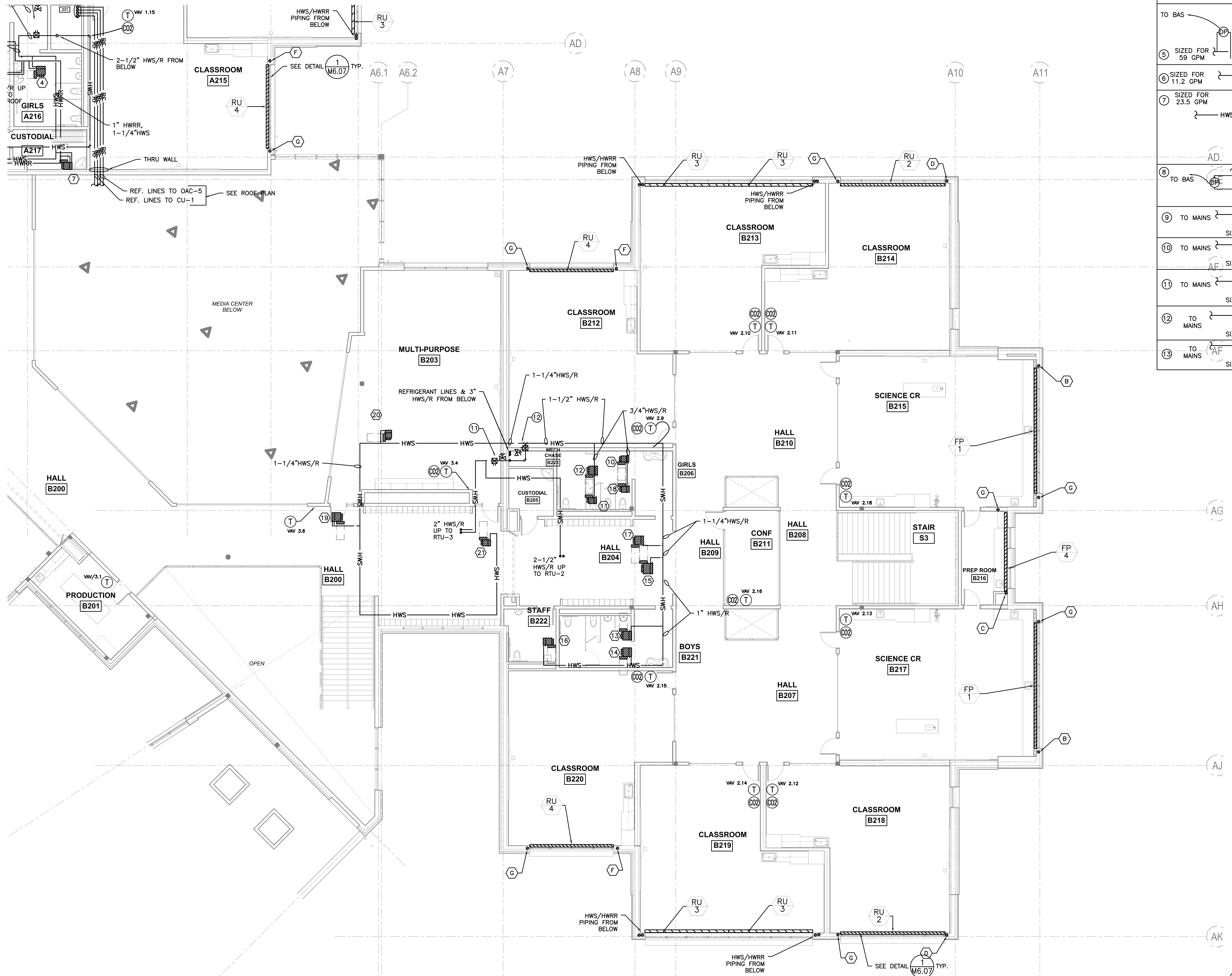
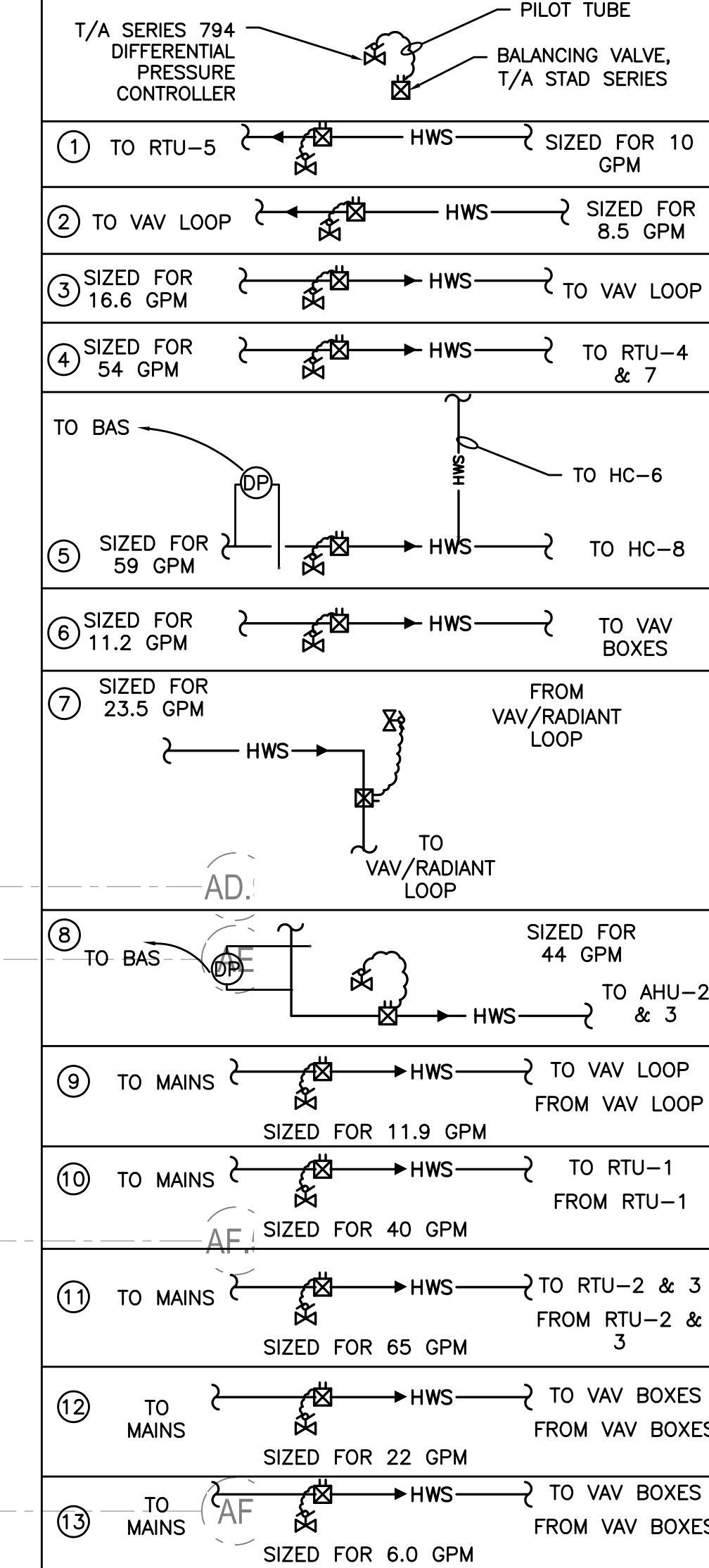
GENERAL NOTES:

- SEE (3) FOR SUPPORT OF FLEX PIPE.
- SEE (9) FOR SEISMIC PIPE SUPPORT. NOTE: SEISMIC SUPPORTS SHOWN ARE BASED ON ANTICIPATED REQUIREMENTS. DESIGN OF SEISMIC AS REQUIRED BY SPECIFICATIONS IS BY OTHERS.
- SEE (13) FOR NON-SEISMIC PIPE SUPPORT.
- FIRE SEALING OF PIPES MAY NOT BE SHOWN IN ALL LOCATIONS REQUIRED. SEE ARCHITECTURAL DRAWING FOR FIRE RATED WALL.
- SEE ARCHITECTURAL DRAWINGS FOR ACOUSTICALLY IMPORTANT WALLS (WALL TYPES). SEAL PENETRATIONS IN THOSE WALLS PER DETAIL 10/M6.04

VAV KEY - LEVEL 2 SECTOR A & B



BALANCING VALVE KEY



1 LEVEL 2 SECTOR 'B' MECHANICAL PIPING PLAN
M3.22 SCALE: 1/8"=1'-0"

RECORD DRAWING:
THIS DRAWING HAS BEEN UPDATED TO REFLECT CHANGES MADE DURING CONSTRUCTION BASED UPON INFORMATION FURNISHED TO THE ENGINEER BY THE INSTALLATION CONTRACTOR. NO WARRANTY, EITHER EXPLICIT OR IMPLIED IS GIVEN BY MFA, INC. AS TO THE ACCURACY AND/OR COMPLETENESS OF THIS INFORMATION.

IBI GROUP
Dull Olson Weekes - IBI Group
907 SW Washington Street, Portland, OR 97205 USA
tel 503 226 6950 fax 503 273 9192
www.dow-ibigroup.com www.ibigroup.com

NEW PARKROSE MIDDLE SCHOOL - PACKAGE 2
Parkrose School District
Project Address: 11800 NE Shaver Street, Portland, OR 97220
t: (503) 408-2900 f: (503) 408-2998

MFA INC. Consulting Engineers
3007 S.E. Ash St.
Portland, OR 97214
PH: (503) 234-0548
FAX: (503) 234-0677
WWW.MFA-ENG.COM
CONTACT: ANTONIO JOHNSON

RECORD DRAWINGS
key plan

phase	RECORD DRAWING
date	11/09/2015
revisions	
ADD 02	03/08/2013
ADD 03	03/13/2013
PR 02	05/14/2013
ASI-06	06/03/2013
project #	11082
LEVEL 2 SECTOR 'B' MECHANICAL PIPING PLAN	

M3.22

g:\dow\architects\6470_parkrose middle school\mechanical\record drawings\complete - call area.pdf(6470-m322-ang) 3/20/2016 11:42 AM