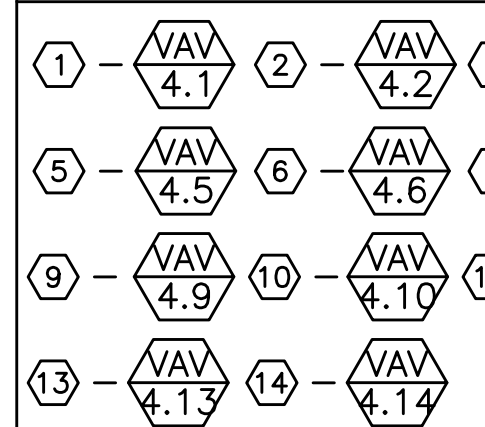
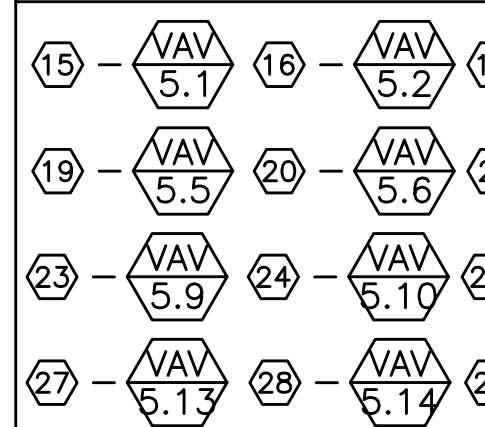


RTU-4 VAV KEY



RTU-5 VAV KEY



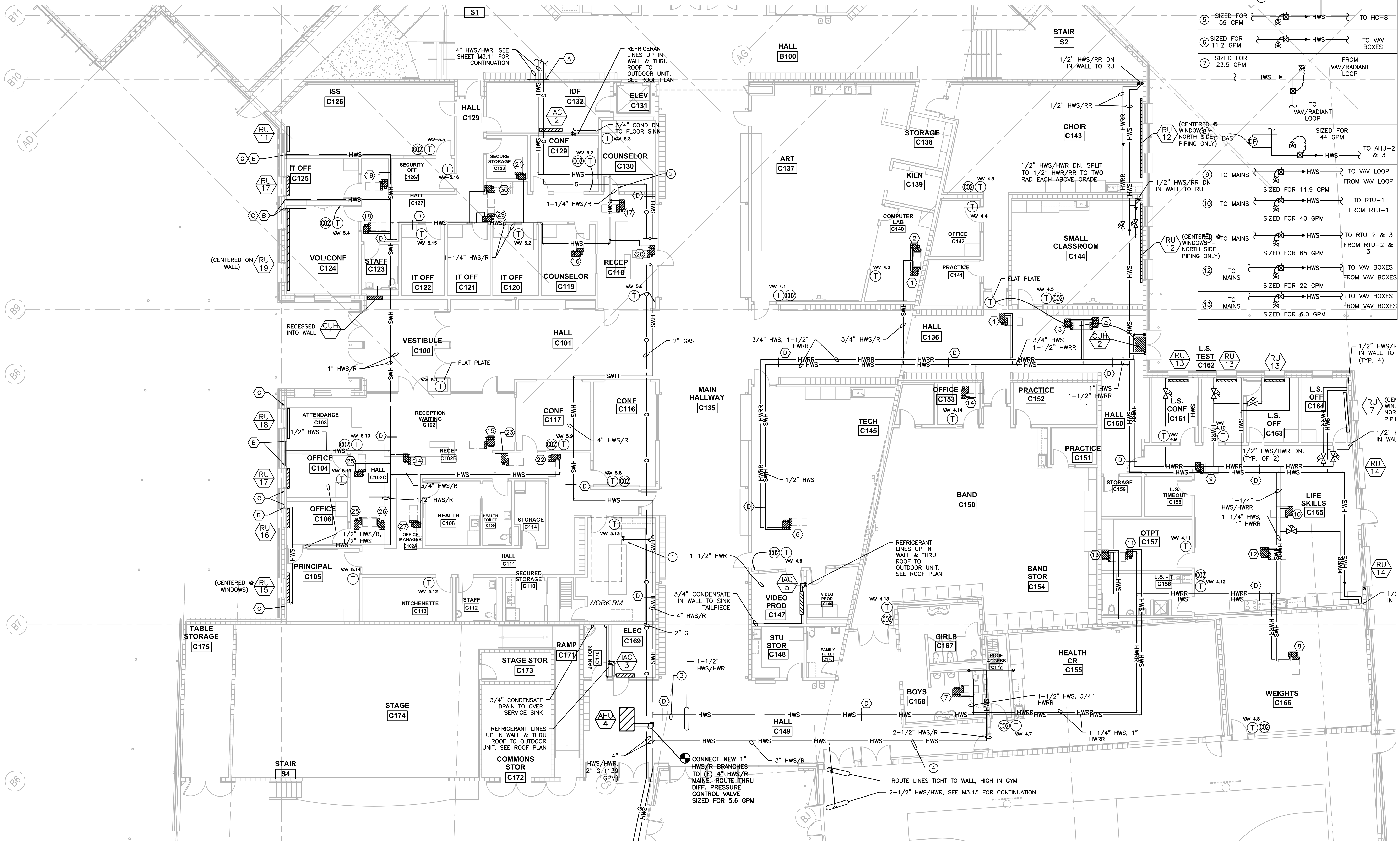
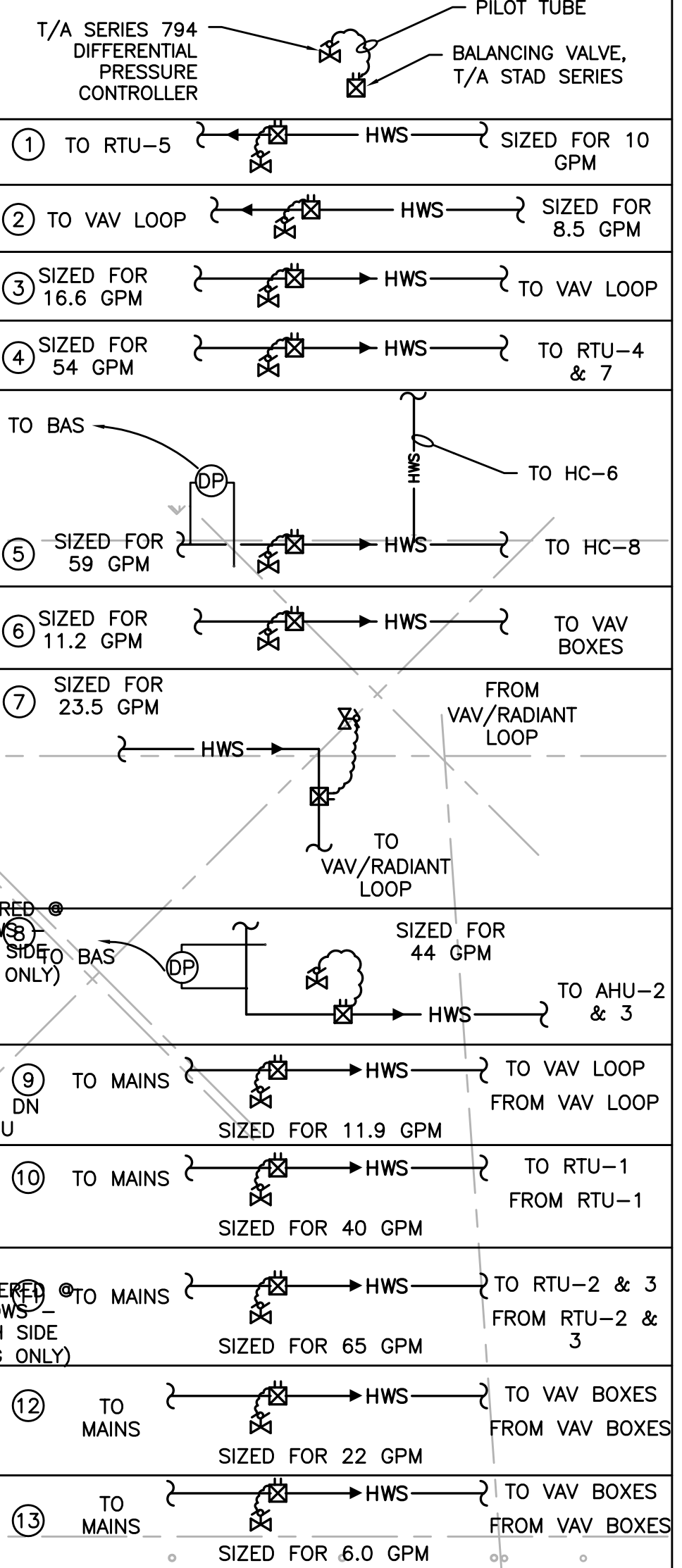
M3.13, M3.14 SHEET NOTES:

- (A) - FIRE SEAL PENETRATION.
- (B) - 1/2" HWS DN TO SERVE RADIATOR.
- (C) - HWRR DN TO SERVE RADIATOR.
- (D) - SEISMIC PIPE SUPPORT. SEE SPECS, TYP.

GENERAL NOTES:

- SEE (3) M6.06 FOR SUPPORT OF FLEX PIPE.
- SEE (9) M6.06 FOR SEISMIC PIPE SUPPORT. NOTE: SEISMIC SUPPORTS SHOWN ARE BASED ON ANTICIPATED REQUIREMENTS. DESIGN OF SEISMIC AS REQUIRED BY SPECIFICATIONS IS BY OTHERS.
- SEE (13) M6.03 FOR NON-SEISMIC PIPE SUPPORT.
- FIRE SEALING OF PIPES MAY NOT BE SHOWN IN ALL LOCATIONS REQUIRED. SEE ARCHITECTURAL DRAWING FOR FIRE RATED WALL.
- SEE ARCHITECTURAL DRAWINGS FOR ACOUSTICALLY IMPORTANT WALLS (WALL TYPES). SEAL PENETRATIONS IN THOSE WALLS PER DETAIL 10/M6.04
- (E) BUILDING PAD IS CONCRETE TREATED. PROVIDE MATERIALS & LABOR AS REQ'D TO REMOVE CONCRETE TREATED PAD FOR UNDERFLOOR WORK

BALANCING VALVE KEY



1 LEVEL 1 SECTOR 'C' MECHANICAL PIPING PLAN
M.31.3 SCALE: 1/8"=1'-0"

phase	RECORD DRAWING
date	11/09/2015
revisions	
project #	11082
LEVEL 1 SECTOR 'C' MECHANICAL PIPING PLAN	

RECORD DRAWING:
THIS DRAWING HAS BEEN UPDATED TO REFLECT CHANGES MADE DURING CONSTRUCTION BASED UPON INFORMATION FURNISHED TO THE ENGINEER BY THE INSTALLATION CONTRACTOR. NO WARRANTY EITHER EXPLICIT OR IMPLIED IS GIVEN BY MFA, INC. AS TO THE ACCURACY AND/OR COMPLETENESS OF THIS INFORMATION.

M3.13