

M2.21 & M2.22 SHEET NOTES:

- |  |   |   |  |
|--|---|---|--|
| (A) - 12" EXH 300 CFM  | (B) - 6" EXH 100 CFM  | (P) - BOD @ 128" AFF  | (DD) - 32X17 LINED SA. BOD @ APPROX. 128".   |
| (C) - 36X6 GRILLE ABOVE DOOR EACH SIDE W/ S/M SLEEVE                             | (D) - DDC PANEL   | (Q) - 14X12 LINED SA ABOVE AND 16X16 LINED SA BELOW   | (EE) - 26X48 LINED SA & 18X48 LINED SA UP TO RTU-2. COMBINE TO 48X44 LINED SA PRIOR TO UNIT CONNECTION |
| (E) - MOTORIZED DAMPER. SEE 7/M5.00 FOR CONTROLS DETAILS                         | (F) - 50X20 LINED SA UP TO RTU-1  | (R) - 14X12 SA. TRANSITION TO 10X8 & ROUTE TO HALL DISPLACEMENT DIFFUSER AS SHOWN   | (FF) - 66X22 LINED RA & 48X24 LINED SA UP TO UNIT  |
| (G) - 50X24 LINED SA UP TO RTU-1   | (H) - 50X24 LINED SA, 36X26 LINED RA & 10X8 EXH DN THRU CHASE TO SERVE 1ST FLOOR. 10" BOILER FLUE THRU CHASE TO SERVE 1ST FLOOR. 10" BOILER FLUE (SEE 2/M6.03 FOR DETAIL) | (S) - 36X22 LINED SA  | (GG) - 8X4 EXH DN IN WALL TO SIDEWALL EXH GRILLE - 8X6 EXH @ 8'-0" AFF                                 |
| (I) - 42X40 LINED RA W/ PLENUM, FROM RTU-2. LOCATED SMOKE DETECTOR IN VERTICAL   | (J) - SLOPE TO MATCH STRUCTURE  | (T) - 26X20 LINED SA  | (HH) - 16X14 SA  |
| (K) - 42X40 LINED RA   | (L) - ROUTE VAV SA OUTLETS UP INTO LANTERN SPACE & ROUTE TO INDIVIDUAL ZONES  | (U) - 16X16 SA  | (II) - NOT USED  |
| (M) - TRANSITION SA BRANCH OUT OF LANTERN CHASE & DN INTO CLASSROOM              | (N) - RA BRANCHES DN IN ARCH. CHASE & INTO CLASSROOM CEILING SPACE  | (V) - PROVIDE ECONOMIZER OPERATION LIGHT ABOVE DOOR. SEE SEQUENCE FOR OPERATION. SEE SPECS FOR MATERIALS. PROVIDE LABEL TO READ "ECONOMIZER OPERATION IS ON, OPENING WINDOW IS ALLOWED" | (JJ) - TRANSFER DIFFUSERS W/ 8" FLEX DUCT  |
| (O) - 16X6 EXH BOG @ 110" AFF. GRILLE FED W/ 300 CFM - 16X5 EXH DN IN STUD SPACE | (W) - ROUTE RA MAIN UP. TIGHT TO WALL. TOP OF RA DUCT TO RESIDE AT BOTTOM OF STRUCTURE.   | (X) - LINED 40X30 SA, LINED 38X30 RA & 10X6 EXH DN THRU CHASE TO SERVE LEVEL 1  |  |
|  | (Y) - RA DUCT TO RUN FLAT IN THIS SECTION. TOP OF DUCT @ BOTTOM OF STRUCTURE  | (Z) - RA DUCT TO SLOPE W/ STRUCTURE FROM THIS POINT WEST/EAST (SECTOR A), NORTH/SOUTH (SECTOR B)  |  |
|  | (AA) - 36X28 RA UP (TOP OF DUCT @ BOTTOM OF STRUCTURE)  | (BB) - 14X8 SA  |  |
|  | (CC) - 16X8 SA  |   |  |

VAV KEY - LEVEL 2 SECTOR A & B

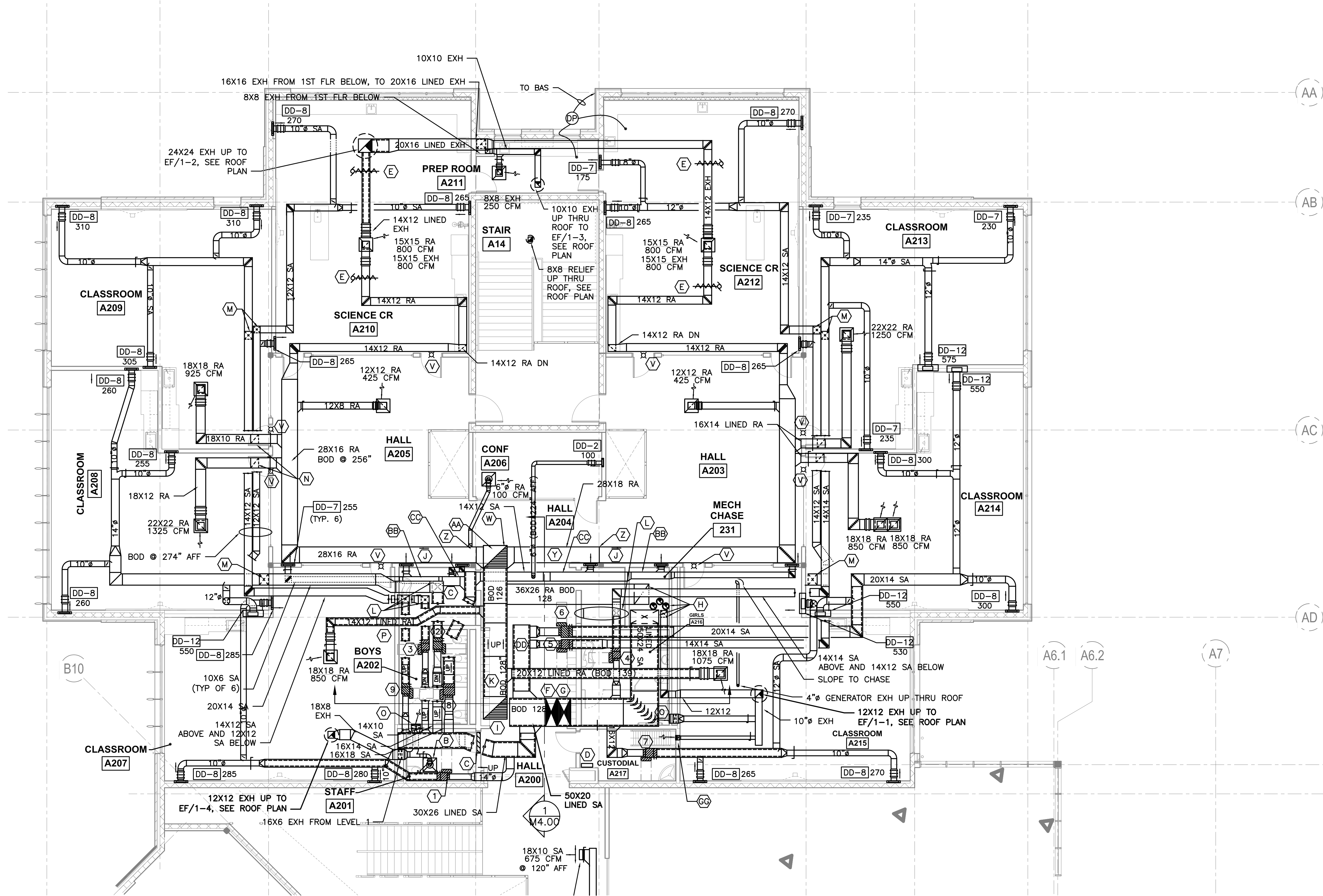
- |                 |                 |                 |                 |                 |
|-----------------|-----------------|-----------------|-----------------|-----------------|
| (1) - VAV 1.9   | (2) - VAV 1.10  | (3) - VAV 1.11  | (4) - VAV 1.12  | (5) - VAV 1.13  |
| (6) - VAV 1.14  | (7) - VAV 1.15  | (8) - VAV 1.16  | (9) - VAV 1.17  | (10) - VAV 2.9  |
| (11) - VAV 2.10 | (12) - VAV 2.11 | (13) - VAV 2.12 | (14) - VAV 2.13 | (15) - VAV 2.14 |
| (16) - VAV 2.15 | (17) - VAV 2.16 | (18) - VAV 2.18 | (19) - VAV 3.1  | (20) - VAV 3.4  |
| (21) - VAV 3.6  |                 |                 |                 |                 |
- \* - VAV 2.18 ABOVE 2.10  
\*\* - VAV 2.9 ABOVE 2.11

GENERAL NOTES

- SEE DETAIL 10/M6.03 FOR NON-SEISMIC DUCT SUPPORT
- SEE DETAIL 8/M6.05 FOR SEISMIC DUCT SUPPORT (SEE SPECS FOR DESIGN REQUIREMENT)
- PAINT ALL EXPOSED DUCTS. SEE ARCHITECT FOR COLOR
- SEE ARCHITECTURAL DRAWINGS FOR ACOUSTICALLY IMPORTANT WALLS (WALL TYPES). SEAL PENETRATIONS IN THOSE WALLS PER DETAIL 10/M6.04

DISPLACEMENT DIFFUSER KEY

- NOTE: SEE FLOOR PLAN FOR AIRFLOW. SEE 12/M6.06 FOR FURTHER DISPLACEMENT DETAIL. (W x H x D)
- |                |               |               |                |
|----------------|---------------|---------------|----------------|
| DD-1 15X24X4   | DD-2 15X30X4  | DD-3 15X36X4  | DD-4 15X48X4   |
| DD-5 24X24X4   | DD-6 24X30X4  | DD-7 24X36X4  | DD-8 24X48X4   |
| DD-9 30X24X4   | DD-10 36X24X4 | DD-11 48X24X4 | DD-12 36X60X11 |
| DD-13 24X60X11 |               |               |                |



1 LEVEL 2 SECTOR 'A' MECHANICAL PLAN  
M2.21 SCALE: 1/8"=1'-0"

phase	RECORD DRAWING
date	11/09/2015
revisions	
project #	11082

LEVEL 2 SECTOR 'A' MECHANICAL PLAN

**M2.21**

**RECORD DRAWING:**  
THIS DRAWING HAS BEEN UPDATED TO REFLECT CHANGES MADE DURING CONSTRUCTION BASED UPON INFORMATION FURNISHED TO THE ENGINEER BY THE INSTALLATION CONTRACTOR. NO WARRANTY, EITHER EXPLICIT OR IMPLIED IS GIVEN BY MFA, INC. AS TO THE ACCURACY AND/OR COMPLETENESS OF THIS INFORMATION.

d:\dowa\architects\6470\_parkrose middle school\m2\record drawings\complete - call area.pdf\6470-m221\_m222.dwg 9/20/2016 6:06 AM