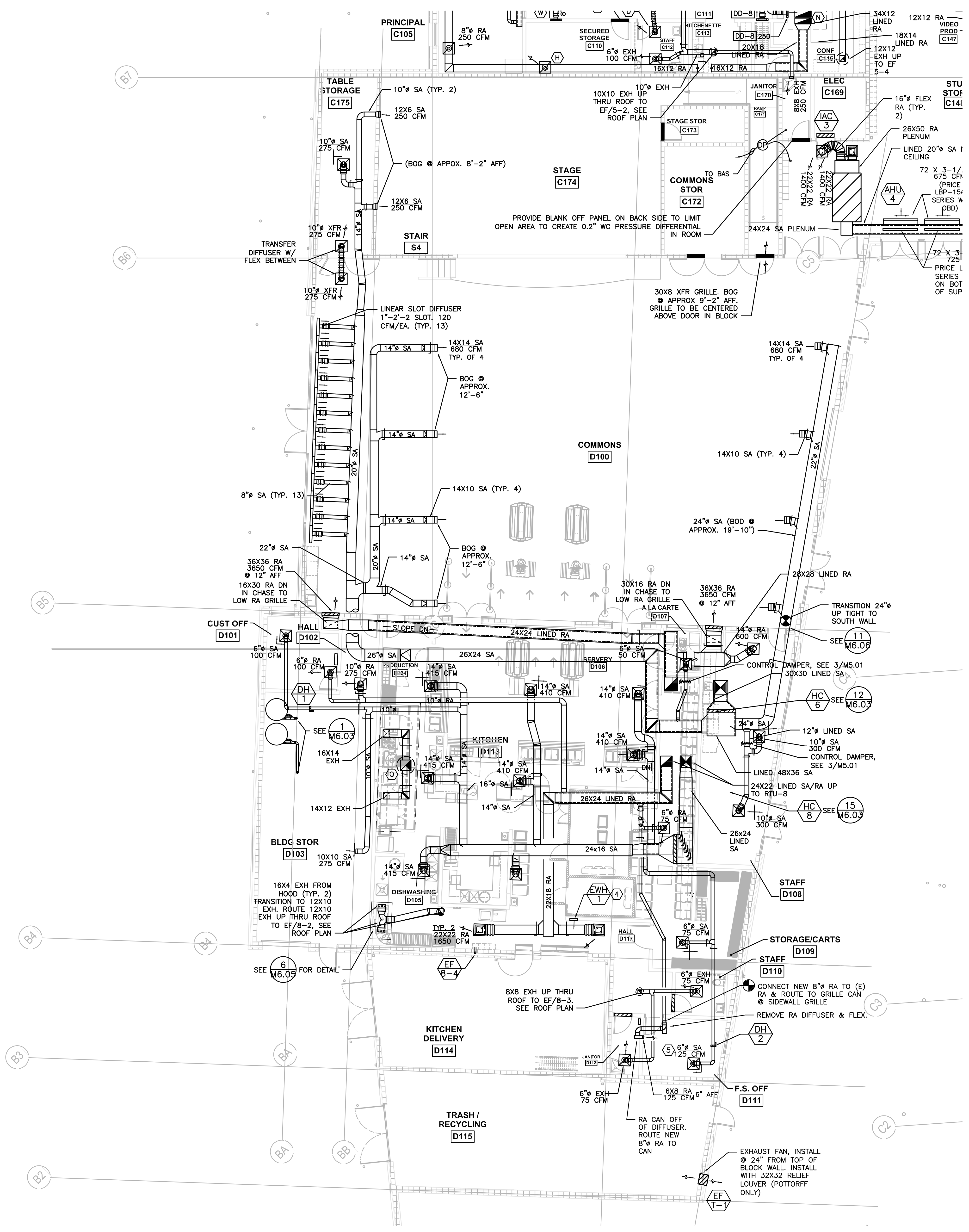


| | |
|-----------|----------------|
| phase | RECORD DRAWING |
| date | 11/09/2015 |
| revisions | |
| project # | 11082 |

LEVEL 1 SECTOR 'D'
 MECHANICAL PLAN

M2.14



- M2.13 & M2.14 SHEET NOTES:**
- | | | |
|---|--|---|
| (A) - 4" EXH DUCT FROM KILN (PROVIDE 4" ALUMINUM FLEX DUCT TO HARD ELBOW AT WALL). ROUTE SHEET METAL (HARD PIPE) FROM PENETRATION TO VENT ABOVE ROOF. | (P) - ROUTE EXH DUCT DN TO HOOD COLLAR. SEE KITCHEN PLANS FOR HOOD DETAIL & CONNECTION | (FF) - MAIN BAS PANEL |
| (B) - 36X6 GRILLE ABOVE DOOR, EACH SIDE W/ SHEETMETAL SLEAVE | (Q) - 22X22 EXH UP THRU ROOF TO EF/8-1, SEE ROOF PLAN | (GG) - CONTROL DAMPER, COORD W/ CONTROL DRAWINGS |
| (C) - 6" EXH 100 CFM | (R) - | (HH) - 3" DUCT SILENCER, SEE SPECS |
| (D) - TRANSFER DIFFUSER/GRILLE W/ 8" FLEX | (S) - OPERATE @ COOLING AIRFLOW RATE WHEN EF/4-2 IS OPERATING | (1) - NOT USED. |
| (E) - 30X30 LINED SA/RA UP THRU ROOF TO RTU-6 | (T) - 12" EXH 300 CFM | (2) - NOT USED. |
| (F) - SEE DETAIL 3/M6.03 FOR HEAVY DUTY RETURN GRILLE | (U) - DD-1 75 | (3) - NOT USED |
| (G) - 40X26 LINED SA & RA UP THRU ROOF TO RTU-4 | (V) - 6" RA 100 CFM | (4) - RECESSED WALL HEATER, KING MODEL KAWH4848, 4800 W, 480V/3Ø, OPERATE FROM BAS SENSOR NOTED ON M3.14. |
| (H) - 5" RA 75 CFM | (W) - DD-7 250 | (5) - REBALANCE DIFFUSER TO CFM LISTED |
| (I) - 6" RA 125 CFM | (X) - INSTALL 24X24 ACCESS PANEL FOR VAV ACCESS. SEE SPECS FOR DETAIL | |
| (J) - DDC PANEL | (Y) - 34X26 LINED SA & 44X20 LINED RA UP TO RTU-7 | |
| (K) - 14X12 EXH UP THRU ROOF TO EF/4-1, SEE ROOF PLAN | (Z) - 6" EXH UP THRU ROOF TO EF/5-1, SEE ROOF PLAN | |
| (L) - 34X20 LINED SA UP TO UNIT, COMBINE LINED 34X14 & LINED 34X12 RA INTO LINED 34X20 RA BEFORE CONNECTION TO UNIT. | (AA) - DD-1 100 | |
| (M) - 4" DRYER DUCT UP IN WALL TO EXHAUST FAN LISTED. SEE ROOF PLAN FOR VENT INFORMATION. SEE DETAIL 2/M6.06 FOR FAN DETAIL | (BB) - DD-2 125 | |
| | (CC) - 7" EXH UP THRU ROOF TO RELIEF VENT, SEE ROOF PLAN (HOOD PROVIDED BY OTHER DIV) | |
| | (DD) - 10" RA 225 CFM | |

- GENERAL NOTES**
- SEE DETAIL 10/M6.03 FOR NON-SEISMIC DUCT SUPPORT
 - SEE DETAIL 8/M6.05 FOR SEISMIC DUCT SUPPORT (SEE SPECS FOR DESIGN REQUIREMENT)
 - PAINT ALL EXPOSED DUCTS. SEE ARCHITECT FOR COLOR
 - SEE ARCHITECTURAL DRAWINGS FOR ACOUSTICALLY IMPORTANT WALLS (WALL TYPES). SEAL PENETRATIONS IN THOSE WALLS PER DETAIL 10/M6.04

RECORD DRAWING:
 THIS DRAWING HAS BEEN UPDATED TO REFLECT CHANGES MADE DURING CONSTRUCTION BASED UPON INFORMATION FURNISHED TO THE ENGINEER BY THE INSTALLATION CONTRACTOR. NO WARRANTY, EITHER EXPLICIT OR IMPLIED IS GIVEN BY MFA, INC. AS TO THE ACCURACY AND/OR COMPLETENESS OF THIS INFORMATION.

1 LEVEL 1 SECTOR 'D' MECHANICAL PLAN
 M2.14 SCALE: 1/8"=1'-0"

g:\dowa_architects\6470_parkrose_middle_school\m2\record\m2.14.mxd, 11/15/2015 3:41 PM