

phase	RECORD DRAWING
date	11/09/2015
revisions	
project #	11082
LEVEL 1 SECTOR 'C' MECHANICAL PLAN	

M2.13

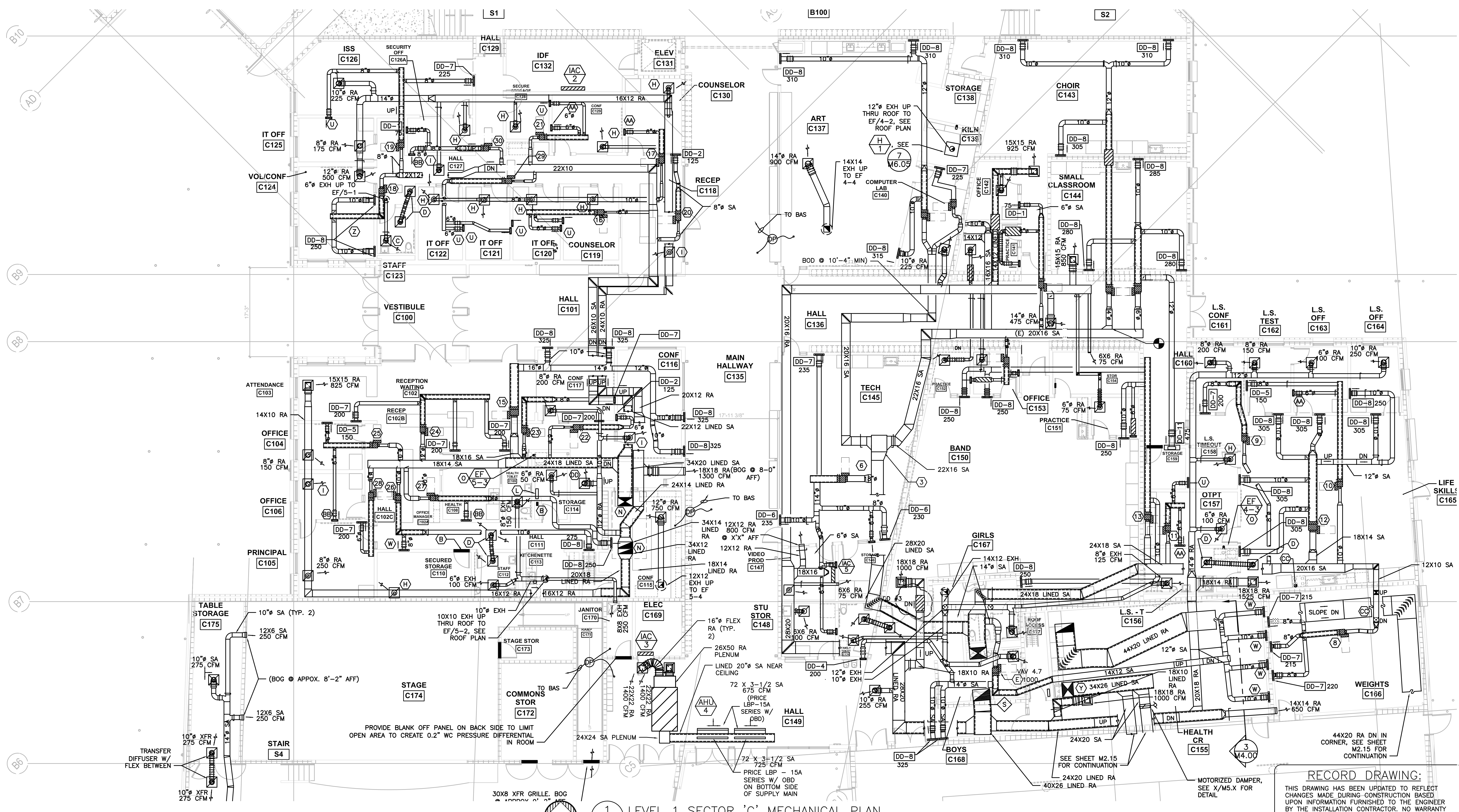
- M2.13 & M2.14 SHEET NOTES:**
- (A) - 4" EXH DUCT FROM KILN (PROVIDE 4" ALUMINUM FLEX DUCT TO HARD ELBOW AT WALL) ROUTE SHEET METAL (HARD PIPE) FROM PENETRATION TO VENT ABOVE ROOF.
 - (B) - 36X6 GRILLE ABOVE DOOR, EACH SIDE W/ SHEETMETAL SLEAVE
 - (C) - 6" EXH 100 CFM
 - (D) - TRANSFER DIFFUSER/GRILLE W/ 8" FLEX
 - (E) - 30X30 LINED SA/RA UP THRU ROOF TO RTU-6
 - (F) - SEE DETAIL 3/M6.03 FOR HEAVY DUTY RETURN GRILLE
 - (G) - 40X26 LINED SA & RA UP THRU ROOF TO RTU-4
 - (H) - 6" RA 75 CFM
 - (I) - 6" RA 125 CFM
 - (L) - DDC PANEL
 - (M) - 14X12 EXH UP THRU ROOF TO EF/4-1. SEE ROOF PLAN
 - (N) - 34X20 LINED SA UP TO UNIT. COMBINE LINED 34X14 & LINED 34X12 RA INTO LINED 34X20 RA BEFORE CONNECTION TO UNIT.
 - (O) - 4" DRYER DUCT UP IN WALL TO EXHAUST FAN LISTED. SEE ROOF PLAN FOR VENT INFORMATION. SEE DETAIL 2/M6.06 FOR FAN DETAIL
 - (P) - ROUTE EXH DUCT DN TO HOOD COLLAR. SEE KITCHEN PLANS FOR HOOD DETAIL & CONNECTION
 - (Q) - 22X22 EXH UP THRU ROOF TO EF/8-1. SEE ROOF PLAN
 - (R) -
 - (S) - OPERATE @ COOLING AIRFLOW RATE WHEN EF/4-2 IS OPERATING
 - (T) - 12" EXH 300 CFM
 - (U) - DD-1 75
 - (V) - 6" RA 100 CFM
 - (W) - DD-7 250
 - (X) - INSTALL 24X24 ACCESS PANEL FOR VAV ACCESS. SEE SPECS FOR DETAIL
 - (Y) - 34X26 LINED SA & 44X20 LINED RA UP TO RTU-7
 - (Z) - 6" EXH UP THRU ROOF TO EF/5-1. SEE ROOF PLAN
 - (AA) - DD-1 100
 - (BB) - DD-2 125
 - (CC) - 7" EXH UP THRU ROOF TO RELIEF VENT, SEE ROOF PLAN (HOOD PROVIDED BY OTHER DIV)
 - (DD) - 10" RA 225 CFM
 - (FF) - MAIN BAS PANEL
 - (GG) - CONTROL DAMPER, COORD W/ CONTROL DRAWINGS
 - (HH) - 3" DUCT SILENCER, SEE SPECS
 - (1) - NOT USED.
 - (2) - NOT USED.
 - (3) - NOT USED.
 - (4) - RECESSED WALL HEATER, KING MODEL KAWH4848. 4800 W, 480V/3P. OPERATE FROM BAS SENSOR NOTED ON M3.14.
 - (5) - REBALANCE DIFFUSER TO CFM LISTED

- RTU-4 VAV KEY**
- (1) - VAV 4.1
 - (2) - VAV 4.2
 - (3) - VAV 4.3
 - (4) - VAV 4.4
 - (5) - VAV 4.5
 - (6) - VAV 4.6
 - (7) - VAV 4.7
 - (8) - VAV 4.8
 - (9) - VAV 4.9
 - (10) - VAV 4.10
 - (11) - VAV 4.11
 - (12) - VAV 4.12
 - (13) - VAV 4.13
 - (14) - VAV 4.14

- RTU-5 VAV KEY**
- (15) - VAV 5.1
 - (16) - VAV 5.2
 - (17) - VAV 5.3
 - (18) - VAV 5.4
 - (19) - VAV 5.5
 - (20) - VAV 5.6
 - (21) - VAV 5.7
 - (22) - VAV 5.8
 - (23) - VAV 5.9
 - (24) - VAV 5.10
 - (25) - VAV 5.11
 - (26) - VAV 5.12
 - (27) - VAV 5.13
 - (28) - VAV 5.14
 - (29) - VAV 5.15
 - (30) - VAV 5.16

- DISPLACEMENT DIFFUSER KEY**
- NOTE: SEE FLOOR PLAN FOR AIRFLOW. SEE DETAIL 12/M6.06 FOR FURTHER DISPLACEMENT DETAIL. (W x H x D)
- DD-1 15X24X4
 - DD-2 15X30X4
 - DD-3 15X36X4
 - DD-4 15X48X4
 - DD-5 24X24X4
 - DD-6 24X30X4
 - DD-7 24X36X4
 - DD-8 24X48X4
 - DD-9 30X24X4
 - DD-10 36X24X4
 - DD-11 36X48X11
 - DD-12 36X60X11
 - DD-13 24X60X11

- GENERAL NOTES**
- SEE DETAIL 10/M6.03 FOR NON-SEISMIC DUCT SUPPORT
 - SEE DETAIL 8/M6.05 FOR SEISMIC DUCT SUPPORT (SEE SPECS FOR DESIGN REQUIREMENT)
 - PAINT ALL EXPOSED DUCTS. SEE ARCHITECT FOR COLOR
 - SEE ARCHITECTURAL DRAWINGS FOR ACOUSTICALLY IMPORTANT WALLS (WALL TYPES). SEAL PENETRATIONS IN THOSE WALLS PER DETAIL 10/M6.04



1 LEVEL 1 SECTOR 'C' MECHANICAL PLAN
 M2.13 SCALE: 1/8"=1'-0"

RECORD DRAWING:
 THIS DRAWING HAS BEEN UPDATED TO REFLECT CHANGES MADE DURING CONSTRUCTION BASED UPON INFORMATION FURNISHED TO THE ENGINEER BY THE INSTALLATION CONTRACTOR. NO WARRANTY EITHER EXPLICIT OR IMPLIED IS GIVEN BY MFA, INC. AS TO THE ACCURACY AND/OR COMPLETENESS OF THIS INFORMATION.

c:\dowa\architects\6470_parkrose_middle_school\m2\record\m2.13_m2.14.dwg, 11/19/2015 8:41 PM