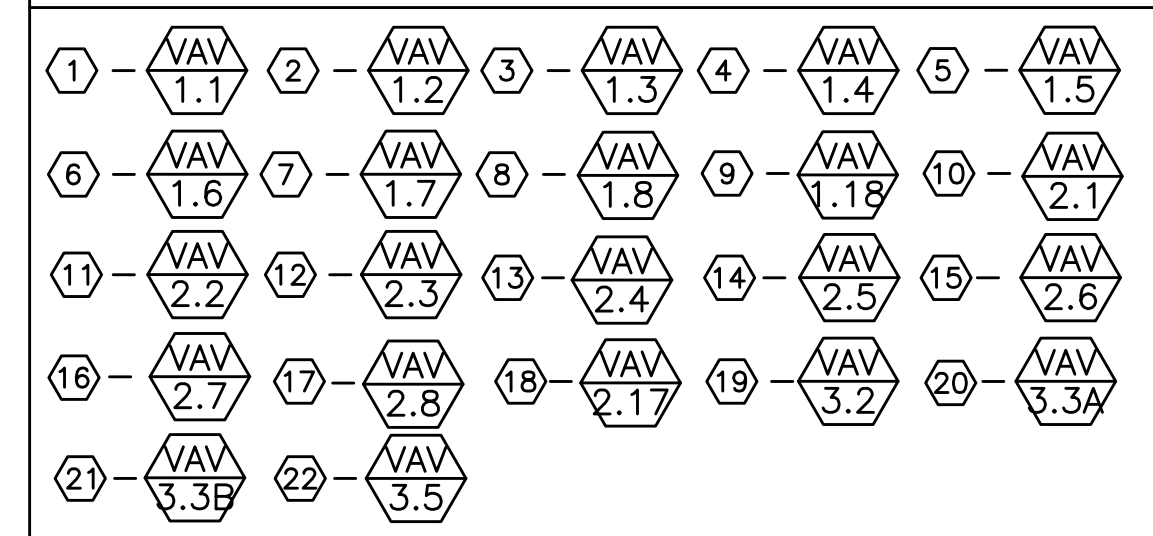


M2.10, M2.11 & M2.12 SHEET NOTES:

- (A) - 12" EXH 300 CFM
- (B) - 6" EXH 100 CFM
- (C) - 36X6 GRILLE ABOVE DOOR EACH SIDE W/ S/M SLEEVE
- (D) - 6" TRANSFER GRILLES W/ FLEX CONNECTION
- (E) - MOTORIZED DAMPER. SEE 7/M5.00 FOR CONTROLS DETAILS
- (F) - LINED 36X26 RA & LINED 50X24 SA UP THRU CHASE. 10" BOILER FLUE (TYP. 3) FROM BELOW & UP THRU CHASE TO ROOF
- (G) - 28X18 LINED SA
- (H) - TRANSITION SA & RA DUCT TO/FROM 18X9 TO GET UNDER STRUCTURE
- (I) - TRANSITION SA & RA DUCT TO/FROM 24X8 TO GET UNDER STRUCTURE
- (J) - TRANSITION SA & RA DUCT TO/FROM 28X8 TO GET UNDER STRUCTURE
- (K) - TRANSITION SA & RA DUCT TO/FROM 34X8 TO GET UNDER STRUCTURE
- (L) - 12X12 EXH 300 CFM
- (M) - LINED 40X30 SA, LINED 38X30 RA & 12X6 EXH UP THRU CHASE TO 2ND FLOOR CEILING SPACE
- (N) - TRANSITION SA & RA DUCT TO/FROM 24X6 TO GET UNDER STRUCTURE
- (P) - 18X24 INSULATED RELIEF/OSA DN TO AHU-1
- (Q) - (EF) A1.7
- (R) - (DD-8) 275 (S) - (DD-7) 245
- (T) - PROVIDE ECONOMIZER OPERATION LIGHT ABOVE DOOR. SEE SEQUENCE FOR OPERATION. SEE SPECS FOR MATERIALS. PROVIDE LABEL TO READ "ECONOMIZER OPERATION IS ON, OPENING WINDOW IS ALLOWED"
- (U) - 18X6 SA BRANCH SERVING SIDEWALL SUPPLY
- (V) - DDC PANEL
- (W) - 8" TRANSFER W/ FLEX
- (X) - 3-1/2"X18" RA DN IN WALL TO LOW 18X6 RA GRILLE. CFM LISTED @ GRILLE. B.O.G. @ 6" AFF
- (Y) - 5-1/2"X18" RA DN IN WALL TO LOW 18X10 RA GRILLE. 475 CFM/ea GRILLE. B.O.G. @ 6" AFF
- (Z) - 4" GENERATOR EXH. COORD. EXACT ROUTING W/ GENERATOR INSTALLATION
- (AA) - ROUTE 22X22 EXH DN TO ELEVATION FOR CONNECTION TO RELIEF PLENUM. COORDINATE W/ GENERATOR RELIEF DUCTING
- (BB) - COORDINATE LOCATION & ELEVATION OF SIDEWALL GRILLES W/ ELECTRICAL PRIOR TO INSTALL
- (CC) - 14X12 SA (DD) - 16X12 SA (EE) - 20X14 SA
- (FF) - 6X6 EXH (GG) - TRANSITION SA OUTLETS FROM VAV BOXES UP & DN OVER RA MAIN DUCTS TO BE BETWEEN STRUCTURE
- (HH) - 20X8 SA (II) - NOT USED
- (JJ) - VAV BOXES STACKED. VAV 2.3 ABOVE VAV 2.17. VAV 2.1 ABOVE VAV 2.2
- (KK) - DUCTWORK TO TRANSITION IN THIS AREA AS SHOWN FOR MECHANICAL & DOMESTIC PIPING
- (LL) - (EF) A1.2
- (MM) - NOT USED
- (NN) - (E) BUILDING PAD IS CONCRETE TREATED. PROVIDE MATERIALS & LABOR AS REQ'D TO REMOVE CONCRETE TREATED PAD FOR UNDERFLOOR WORK
- (OO) - SELF REGULATED THERMOSTATICALLY CONTROLLED DIFFUSERS. SEE SPECS.

VAV KEY - LEVEL 1 SECTOR A & B



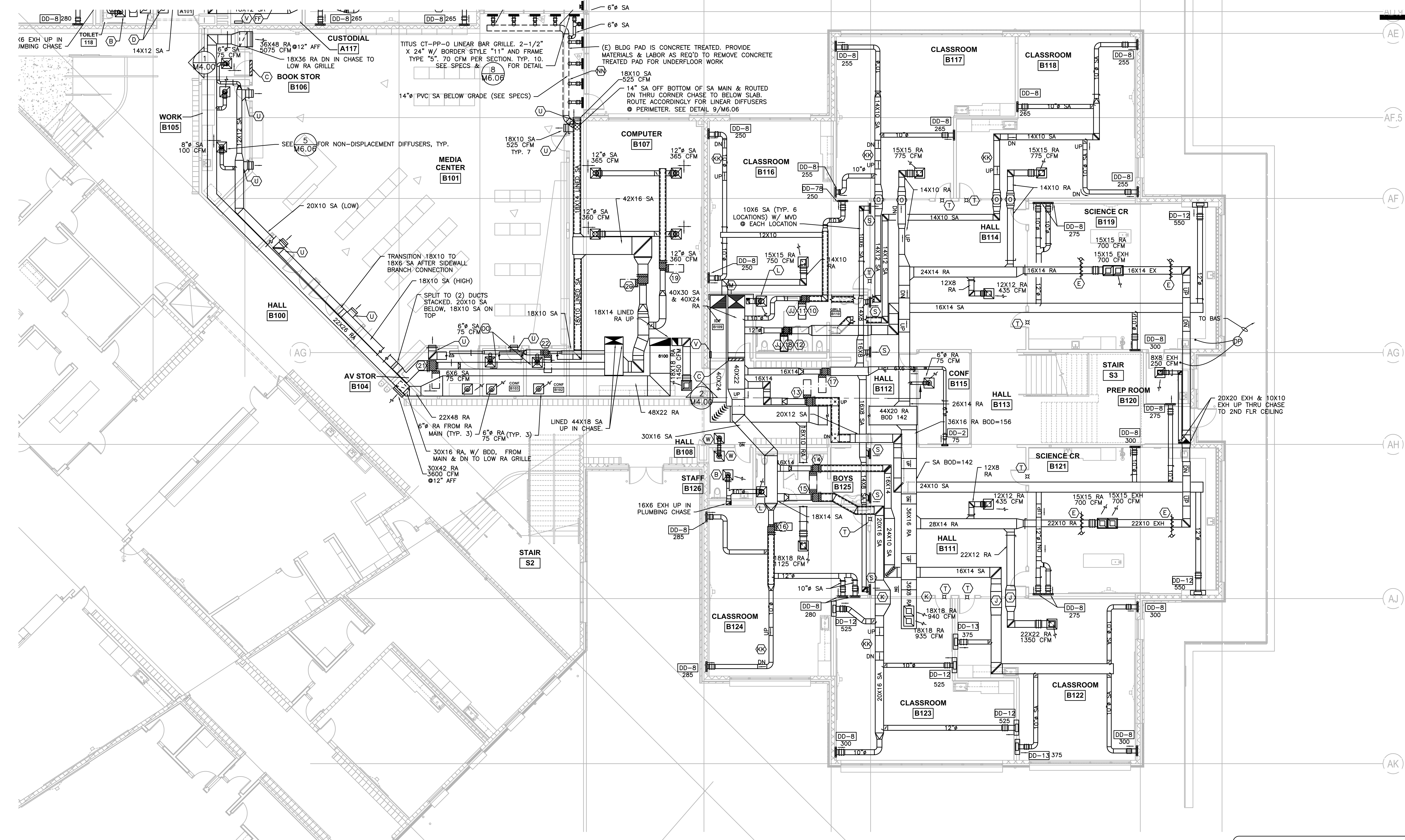
GENERAL NOTES

- SEE DETAIL 10/M6.03 FOR NON-SEISMIC DUCT SUPPORT
- SEE DETAIL 8/M6.05 FOR SEISMIC DUCT SUPPORT (SEE SPECS FOR DESIGN REQUIREMENT)
- PAINT ALL EXPOSED DUCTS. SEE ARCHITECT FOR COLOR
- SEE DETAIL 10/M6.06 FOR EXPOSED DUCT WALL PENETRATION DETAIL
- SEE ARCHITECTURAL DRAWINGS FOR ACOUSTICALLY IMPORTANT WALLS (WALL TYPES). SEAL PENETRATIONS IN THOSE WALLS PER DETAIL 10/M6.04

DISPLACEMENT DIFFUSER KEY

- NOTE: SEE FLOOR PLAN FOR AIRFLOW. SEE DETAIL 12/M6.06 FOR FURTHER DISPLACEMENT DETAIL. (W x H x D)
- (DD-1) 15X24X4 (DD-2) 15X30X4 (DD-3) 15X36X4 (DD-4) 15X48X4
 - (DD-5) 24X24X4 (DD-6) 24X30X4 (DD-7) 24X36X4 (DD-8) 24X48X4
 - (DD-9) 30X24X4 (DD-10) 36X24X4 (DD-11) 48X24X4 (DD-12) 36X60X11
 - (DD-13) 24X60X11

DOI **IBI**
Dull Olson Weekes - IBI Group
 907 SW Washington Street, Portland, OR 97205
 tel 503 226 6950 fax 503 273 9192
 www.dow-ibigroup.com www.ibigroup.com



1 LEVEL 1 SECTOR 'B' MECHANICAL PLAN
 M2.12 SCALE: 1/8"=1'-0"

RECORD DRAWING:
 THIS DRAWING HAS BEEN UPDATED TO REFLECT CHANGES MADE DURING CONSTRUCTION BASED UPON INFORMATION FURNISHED TO THE ENGINEER BY THE INSTALLATION CONTRACTOR. NO WARRANTY, EITHER EXPLICIT OR IMPLIED IS GIVEN BY MFA, INC. AS TO THE ACCURACY AND/OR COMPLETENESS OF THIS INFORMATION.

NEW PARKROSE MIDDLE SCHOOL - PACKAGE 2
Parkrose School District
 Project Address: 11800 NE Shaver Street, Portland, OR 97220
 t: (503) 408-2900 f: (503) 408-2998

MFA Consulting Engineers
 3007 S.E. Ash St
 Portland, OR 97214
 PHN: (503) 234-0548
 FAX: (503) 234-0677
 WWW.MFA-ENG.COM
 CONTACT: ANTONIO JOHNSON

RECORD DRAWINGS

key plan

phase	RECORD DRAWING
date	11/09/2015
revisions	
project #	11082
LEVEL 1 SECTOR 'B'	MECHANICAL PLAN
M2.12	

d:\dow\architects\9170_parkrose middle school\m2\record\m2.12.dwg 8/14/2016 1:53 PM