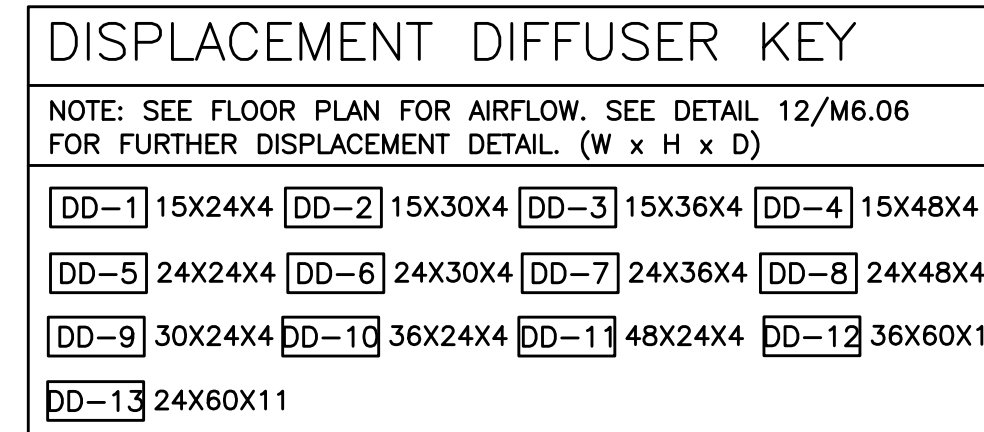
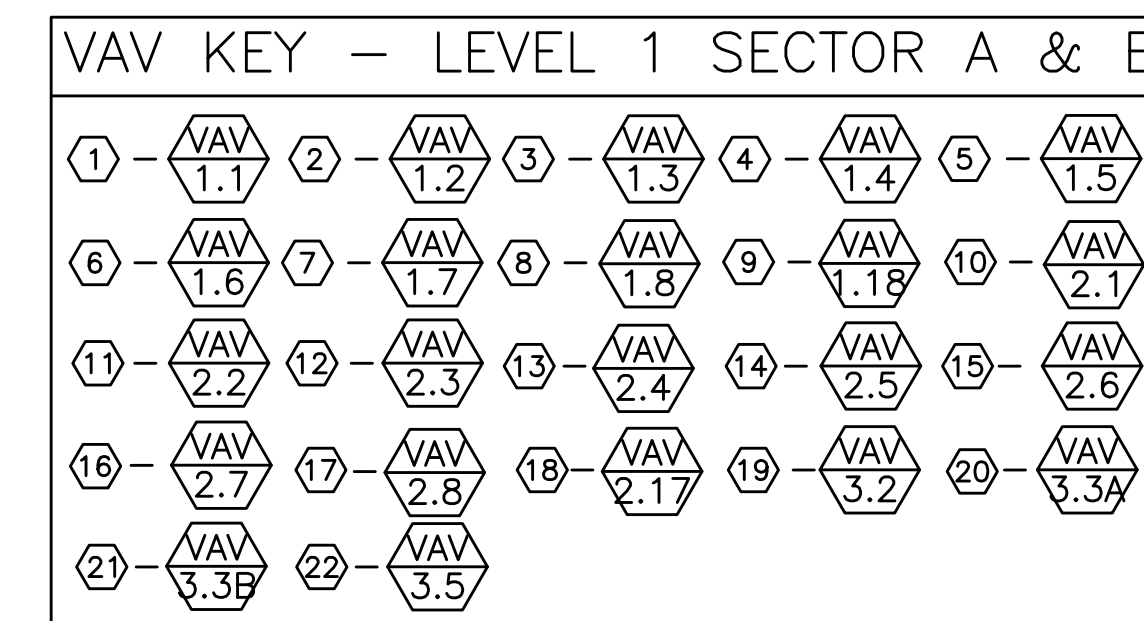
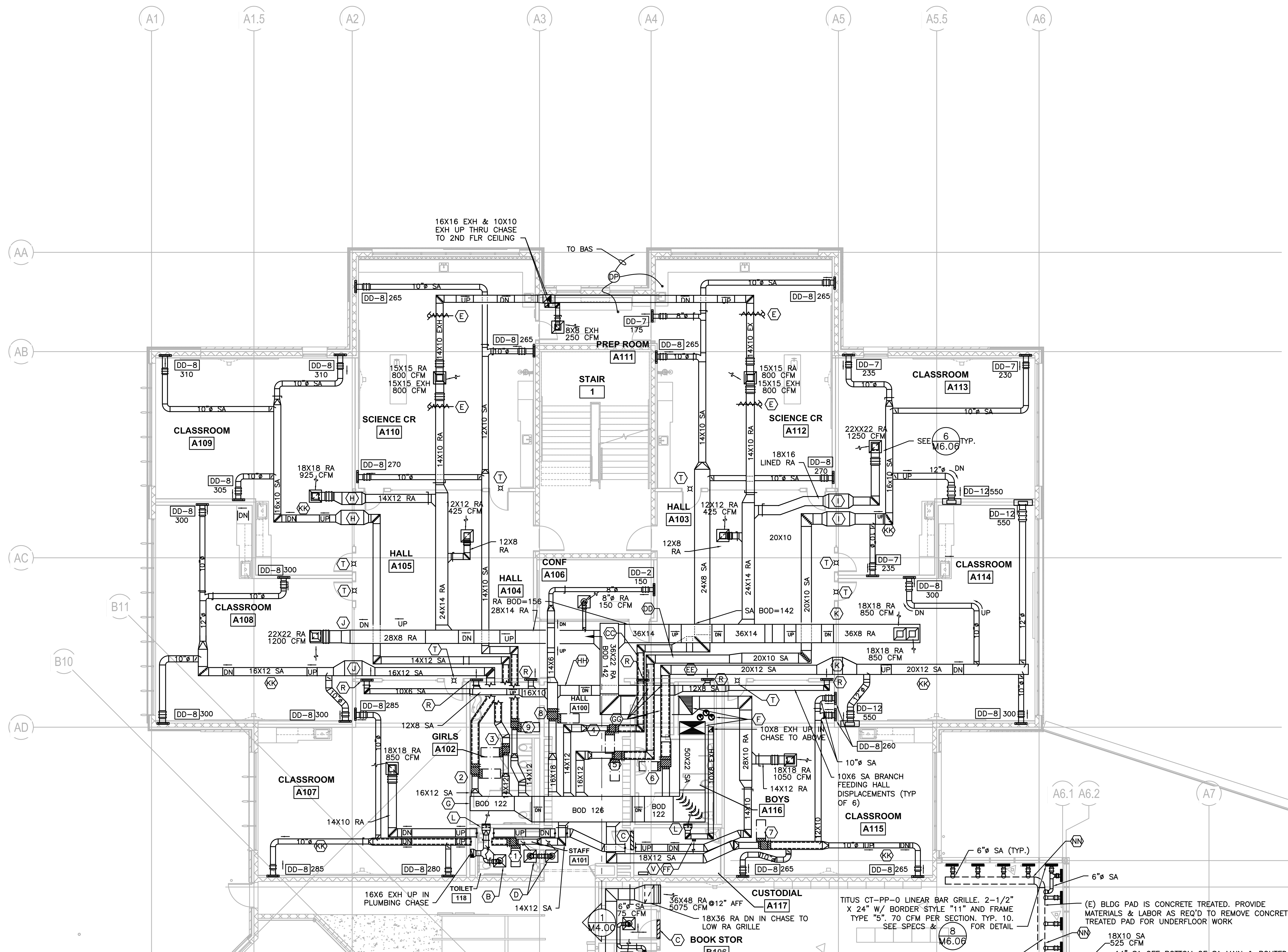


- M2.10, M2.11 & M2.12 SHEET NOTES:
- | | | | |
|--|--|---|---|
| (A) - 12" EXH 300 CFM | (B) - 6" EXH 100 CFM | (P) - 18X24 INSULATED RELIEF/OSA DN TO AHU-1 | (BB) - COORDINATE LOCATION & ELEVATION OF SIDEWALL GRILLES W/ ELECTRICAL PRIOR TO INSTALL |
| (C) - 36X6 GRILLE ABOVE DOOR EACH SIDE W/ S/M SLEEVE | (D) - 6" TRANSFER GRILLES W/ FLEX CONNECTION | (Q) - DD-8 275 | (CC) - 14X12 SA |
| (E) - MOTORIZED DAMPER. SEE 7/M5.00 FOR CONTROLS DETAILS | (F) - LINED 36X26 RA & LINED 50X24 SA UP THRU CHASE. 10" BOILER FLUE (TYP. 3) FROM BELOW & UP THRU CHASE TO ROOF | (R) - DD-8 275 | (CD) - 16X12 SA |
| (G) - 28X18 LINED SA | (H) - TRANSITION SA & RA DUCT TO/FROM 18X9 TO GET UNDER STRUCTURE | (S) - DD-7 245 | (EE) - 20X14 SA |
| (I) - TRANSITION SA & RA DUCT TO/FROM 24X8 TO GET UNDER STRUCTURE | (J) - TRANSITION SA & RA DUCT TO/FROM 28X8 TO GET UNDER STRUCTURE | (T) - PROVIDE ECONOMIZER OPERATION LIGHT ABOVE DOOR. SEE SEQUENCE FOR OPERATION. SEE SPECS FOR MATERIALS. PROVIDE LABEL TO READ "ECONOMIZER OPERATION IS ON, OPENING WINDOW IS ALLOWED" | (FF) - 6X6 EXH 100 CFM |
| (K) - TRANSITION SA & RA DUCT TO/FROM 34X8 TO GET UNDER STRUCTURE | (L) - 12X12 EXH 300 CFM | (U) - 18X6 SA BRANCH SERVING SIDEWALL SUPPLY | (GG) - TRANSITION SA OUTLETS FROM VAV BOXES UP & DN OVER RA MAIN. DUCTS TO BE BETWEEN STRUCTURE |
| (M) - LINED 40X30 SA, LINED 38X30 RA & 12X6 EXH UP THRU CHASE TO 2ND FLOOR CEILING SPACE | (N) - TRANSITION SA & RA DUCT TO/FROM 24X6 TO GET UNDER STRUCTURE | (V) - DDC PANEL | (HH) - 20X8 SA |
| | | (W) - 8" TRANSFER W/ FLEX | (JJ) - VAV BOXES STACKED. VAV 2.3 ABOVE VAV 2.17. VAV 2.1 ABOVE VAV 2.2 |
| | | (X) - 3-1/2" X 18" RA DN IN WALL TO LOW 18X6 RA GRILLE. CFM LISTED @ GRILLE. B.O.G. @ 6" AFF | (KK) - DUCTWORK TO TRANSITION IN THIS AREA AS SHOWN FOR MECHANICAL & DOMESTIC PIPING |
| | | (Y) - 5-1/2" X 18" RA DN IN WALL TO LOW 18X10 RA GRILLE. 475 CFM/ea GRILLE. B.O.G. @ 6" AFF | (LL) - EF A1.2 |
| | | (Z) - 4" GENERATOR EXH. COORD. EXACT ROUTING W/ GENERATOR INSTALLATION | (MM) - NOT USED |
| | | (AA) - ROUTE 22X22 EXH DN TO ELEVATION FOR CONNECTION TO RELIEF PLENUM. COORDINATE W/ GENERATOR RELIEF DUCTING | (NN) - (E) BUILDING PAD IS CONCRETE TREATED. PROVIDE MATERIALS & LABOR AS REQ'D TO REMOVE CONCRETE TREATED PAD FOR UNDER FLOOR WORK |
| | | | (OO) - SELF REGULATED THERMOSTATICALLY CONTROLLED DIFFUSERS. SEE SPECS. |



- GENERAL NOTES
- SEE DETAIL 10/M6.03 FOR NON-SEISMIC DUCT SUPPORT
 - SEE DETAIL 8/M6.05 FOR SEISMIC DUCT SUPPORT (SEE SPECS FOR DESIGN REQUIREMENT)
 - PAINT ALL EXPOSED DUCTS. SEE ARCHITECT FOR COLOR
 - SEE DETAIL 10/M6.06 FOR EXPOSED DUCT WALL PENETRATION DETAIL
 - SEE ARCHITECTURAL DRAWINGS FOR ACOUSTICALLY IMPORTANT WALLS (WALL TYPES). SEAL PENETRATIONS IN THOSE WALLS PER DETAIL 10/M6.04



1 LEVEL 1 SECTOR 'A' MECHANICAL PLAN
SCALE: 1/8"=1'-0"

RECORD DRAWING:
THIS DRAWING HAS BEEN UPDATED TO REFLECT CHANGES MADE DURING CONSTRUCTION BASED UPON INFORMATION FURNISHED TO THE ENGINEER BY THE INSTALLATION CONTRACTOR. NO WARRANTY, EITHER EXPLICIT OR IMPLIED IS GIVEN BY MFA, INC. AS TO THE ACCURACY AND/OR COMPLETENESS OF THIS INFORMATION.

g:\dowa_architects\6470_parkrose middle school\m2\record\m2_11.mxd 11/10/15 1:53 PM