



PLUMBING LEGEND table with columns for symbols and descriptions. Includes categories like ABOVE FINISHED FLOOR, ARCHITECTURAL, BELOW GRADE, BRITISH THERMAL UNIT, CAPACITY, CAST IRON, COMPARTMENT CONTINUATION, CUBIC, DIAMETER, ELEVATION, ELECTRIC WATER COOLER, FLOOR DRAIN, FIRE DEPARTMENT CONNECTION, FIRE HOSE CABINET, FINISH FLOOR, FLANGE, FOOT / FEET, GAS, GAUGE, GALVANIZED, GALLONS PER MINUTE, GATE VALVE, HORSEPOWER, HOUR, INVERT ELEVATION, KILOWATT, LAVATORY, POUNDS, MAXIMUM, THOUSANDS OF BTUs PER HOUR, MINIMUM, MECHANICAL JOINT, NOT IN MECHANICAL, OUTSIDE STEM & YOKE, PROTECTION, PRESSURE REDUCING VALVE, POUNDS PER SQUARE INCH, REQUIRED, REDUCED PRESSURE BACKFLOW PREVENTER, REVOLUTIONS PER MINUTE, TYPICAL, URINAL, VENT THROUGH ROOF, WATER CLOSET.

PLUMBING GENERAL NOTES: A. THE DRAWINGS ARE DIAGRAMMATIC... B. REFER TO THE MECHANICAL SPECIFICATIONS... C. VERIFY THE EXISTING EQUIPMENT... D. ALL INSTALLATIONS SHALL COMPLY WITH APPLICABLE FEDERAL AND STATE CODES... E. ALL PIPES, EXITING, ENTERING OR PASSING THROUGH ANY RATED FIRE WALL... F. ALL NON-PRESSURIZED DRAIN LINES... G. ALL PIPING INVERTS OR ELEVATIONS ARE MEASURED TO BOTTOM OF PIPE (BOP)... H. ALL POTABLE WATER SYSTEM PIPING AND EQUIPMENT ARE TO BE FLUSHED AND DISINFECTED... I. VENT PER CODE AND AS SHOWN ON DRAWINGS... J. ALL EXCAVATED MATERIAL SHALL BE DISPOSED OF AT AN APPROVED LOCATION... K. PROVIDE CLEANOUTS WHERE INDICATED AND PER CODE... L. PRIME FLOOR DRAINS/SINKS PER CODE... M. PROVIDE DIELECTRIC FITTINGS AT DISSIMILAR METALS PIPE CONNECTIONS... N. VERIFY ALL ELECTRICAL REQUIREMENTS BEFORE ORDERING EQUIPMENT... O. INSTALL ALL EQUIPMENT PER MANUFACTURERS' INSTRUCTIONS... P. CONTRACTOR TO PROVIDE ACCESS DOORS WHERE REQUIRED BY CODE... Q. CONTRACTOR TO FLASH AND COUNTERFLASH NEW VENT THRU ROOF WATER TIGHT.

GAS WATER HEATER SCHEDULE table with columns: DESIGNATOR, SYSTEM SERVED, LOCATION ON PLANS, WATER HEATER TYPE, THERMAL EFFICIENCY, CAPACITY (GAL), USABLE STORAGE (%), RECOVERY CAPACITY (GPH), TEMPERATURE RISE (F), INLET/OUTLET CONNECTIONS (IN), MAXIMUM WORKING PRESSURE (PSI), GAS INPUT BTU/HR, GAS PIPE CONNECTION (IN), ELECTRICAL (VOLTS/PHASE/HERTZ), ELECTRICAL (AMPS), BASIS OF DESIGN, MODEL#, UNIT WEIGHT (LBS), SEE NOTES.

DOMESTIC WATER PIPE PRESSURE DROP CALCULATIONS table with columns: DESIGNATOR, MAIN PRESSURE (PSIG), ELEVATION GAIN FROM METER TO HIGHEST FIXTURE (FT), PRESSURE FOR METER SIZING, METER LOSS, REDUCED PRESSURE BACKFLOW PREVENTER LOSS, REQUIRED PRESSURE AT FURTHEST FIXTURE, EQUIVALENT LENGTH FROM METER TO FURTHEST FIXTURE, BOOSTER PUMP ADDED PRESSURE, PRESSURE LOSS THROUGH EXIST 1-1/2" PIPE (7 PSY100FT), PRESSURE AVAILABLE FOR PIPE SIZING, FRICTION FACTOR, PIPING MAX PRESSURE DROP.

PLUMBING FIXTURE SCHEDULE table with columns: MARK #, FIXTURE [APPLICABLE NOTE], DI [1] [5], TRAP [1], V [1], CW [1], HW [1], BASIS OF DESIGN, REMARKS. Includes fixtures like WC-1 WATER CLOSET HANDICAP, LV-1 LAVATORY, DF-1 DRINKING FOUNTAIN AND BOTTLE FILLER, S-1 EXAM/TREATMENT/HAND WASH SINK, S-2 PROCEDURE SINK, S-3 STAFF LOUNGE SINK, S-4 MEDS SINK, S-5 SOILED UTILITY SINK, MS-1 MOP SINK, HB-1 HOSE BIBB - HYDRANT, TP-1 TRAP PRIMER, MX-1 MIXING VALVE, GCO GRADE CLEANOUT, JWCO WALL CLEAN-OUT, FCO FLOOR CLEAN-OUT, AG-1 FUNNEL DRAIN WITH FIXED AIR GAP FITTING, EW-1 EYE WASH, CL-1 COFFEE URN, DW-1 DISHWASHER, REF-1 REFRIGERATOR CONNECTION, GD-1 GARBAGE DISPOSAL, IH-1 INSTA-HOT, RPBFP REDUCED PRESSURE BACKFLOW PREVENTER.

- NOTES: [1] CONNECTION SIZES ARE FOR INDIVIDUAL FIXTURES ONLY. PIPE SIZE TO FIXTURE SAME AS TRAP/CONNECTION SIZE SHOWN UNLESS INDICATED OTHERWISE ON DRAWINGS. [2] PROVIDE TRAP AND TRAP PRIMER. [3] INSTALL TRAP PRIMER 1 FT ABOVE FLR FOR EVERY 20' OF PRIMER LINE RUN DISTANCE. [4] INSTALL IN CONFORMANCE WITH ADA REQUIREMENTS. HEIGHT 17" FROM FLR TO TOP OF SEAT. [5] PROVIDE INDIRECT WASTE DRAIN. ROUTE TO FLOOR SINK AND DISCHARGE WITH A 2 IN AIR GAP. [6] PROVIDE GRID STRAINER AT WASTE OUTLET. [7] PROVIDE REMOVABLE STRAINER FOR CLEANING AND ACCESS TO THE DRAIN INLET. [8] INSTALL IN ACCORDANCE WITH ADA REQUIREMENTS. [9] PROVIDE HINGED OPEN/FRONT TYPE SEAT. [10] FAUCET AND FIXTURE FITTINGS THAT SUPPLY DRINKING WATER SHALL CONFORM TO THE REQUIREMENTS OF NSF 61, SECTION 9. [11] ROUTE FUNNEL DRAIN AND DAYLIGHT ABOVE FD/SINK. [12] PROVIDE WASTE TRAP AND STRAINER AT WASTE OUTLET. [13] PROVIDE BASKET STRAINER. [14] PROVIDE WASTE LINE WALL CLEAN-OUT BELOW FIXTURE. [15] PROVIDE WITH MIXING VALVE. [16] PROVIDE AIR GAP DEVICE AT DRAIN CONNECTION TO SINK AND CONNECT DISHWASHER DRAIN UPSTREAM OF SINK GRINDER. [17] PROVIDE OUTLET TO FIT GARBAGE DISPOSAL. [18] PROVIDE FOR INSTA-HOT CONNECTION.

PLUMBING PUMPS SCHEDULE table with columns: MARK NUMBER, SYSTEM, TYPE, LOCATION, SLUMP, CONTROL, AVERAGE FLUID TEMPERATURE, QUANTITY, FLOW RATE PER PUMP (GPM), PUMP HEAT (FT WG), MOTOR (HP), MOTOR TYPE, RPM, AMPERAGE, SWITCH, MAXIMUM SOLIDS, MAX WORKING PRESSURE (PSI), MAX OPERATING TEMPERATURE (F), ELECTRICAL (VOLTS/PHASE/HERTZ), VARIABLE SPEED, STARTER, DESIGN WEIGHT (LBS), BASIS OF DESIGN, REMARKS/NOTES.

PLUMBING CALCULATIONS SCHEDULE - ENTIRE CAMPUS table with columns: FIXTURE TYPE, MIN WATER OUTLET, MIN WASTE OUTLET, NO OF FIXTURES, HOT WATER FIXTURE UNITS, COLD WATER FIXTURE UNITS, DOMESTIC WATER FIXTURE UNITS, WASTE & VENT UNIT, SUM. Includes fixtures like HOSE BIBB, SILL COCK-ADDITIONAL, KITCHEN SINK, LAVATORY, LAUNDRY SINK, RECEPTORS, SINK-BAR, SINK SERVICE (MOP SINK), DISHWASHER DOMESTIC, WATER CLOSET, FLUSHOMETER TANK, COFFEE URN, EYE WASH.

South Hillsboro Crossing Clinic OHSU Tuality Health care 7529 SE Tualatin Valley Hwy. Hillsboro, Oregon 97123



ISSUE DATE: 12.19.18 REVISIONS:

PLUMBING LEGEND, NOTES AND SCHEDULES P0.01

PERMIT SET



# South Hillsboro Crossing Clinic

OHSU Tuality Health care

7529 SE Tualatin Valley Hwy. Hillsboro, Oregon 97123

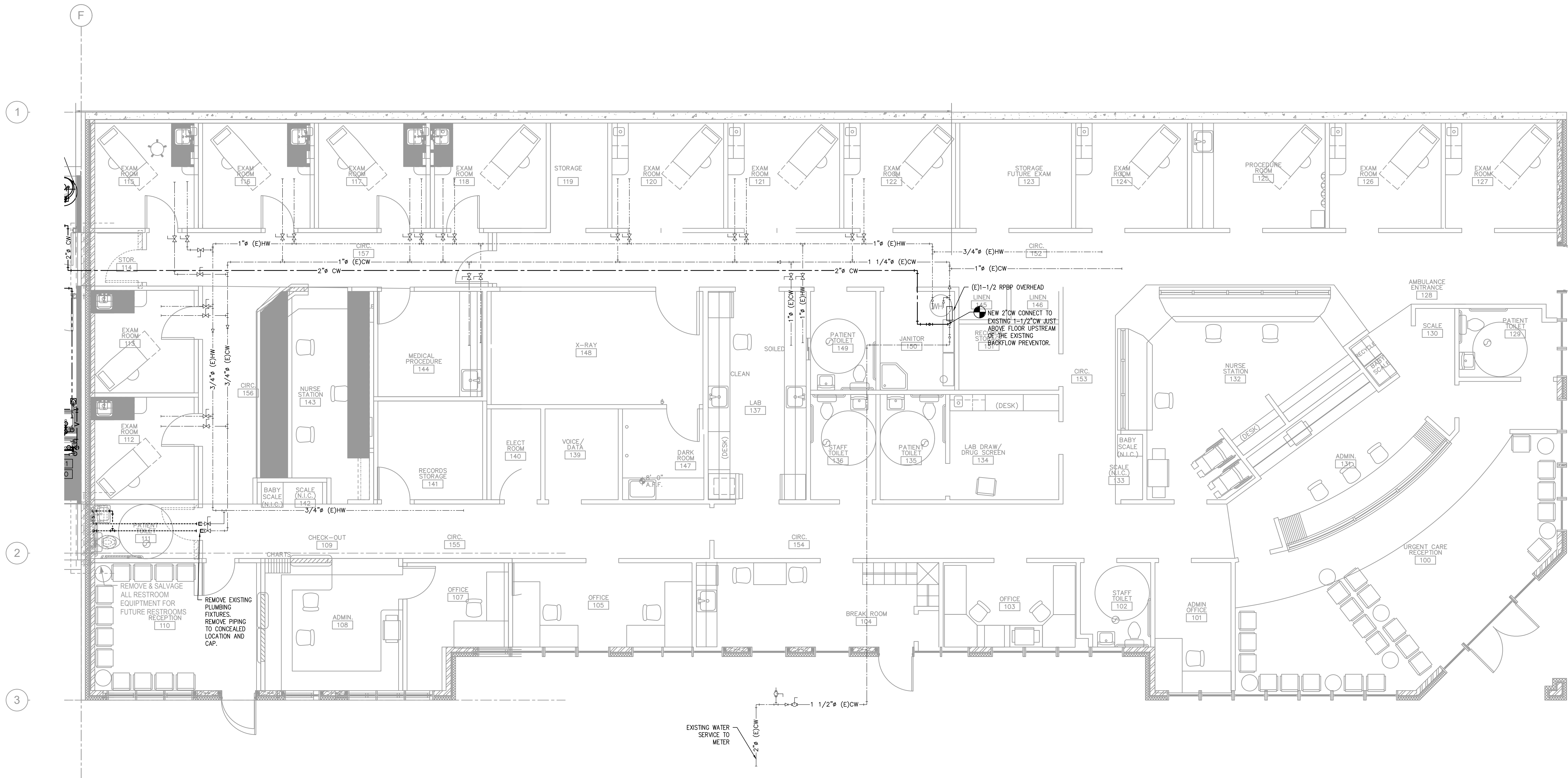


ISSUE DATE: 12.19.18  
REVISIONS:

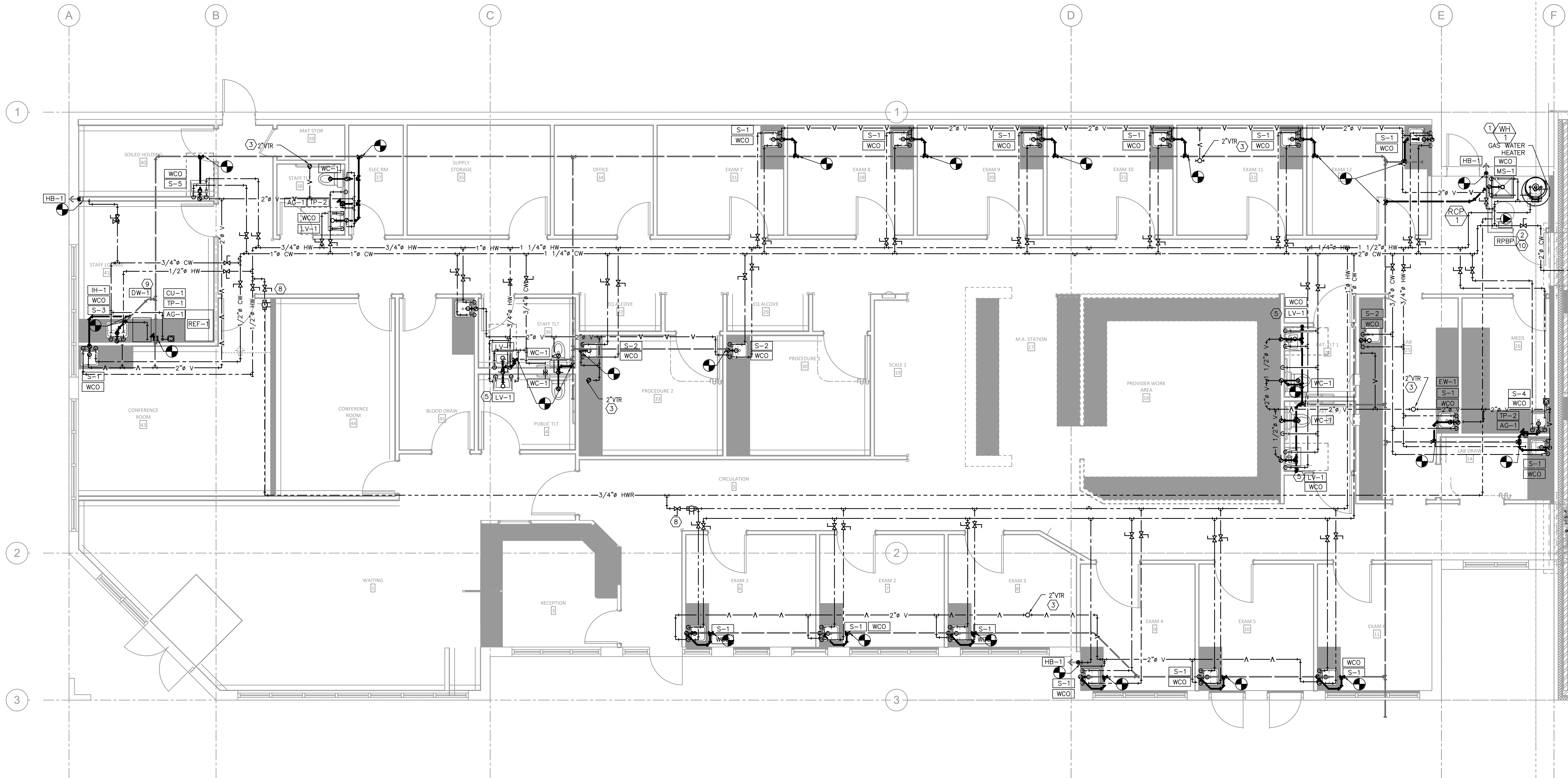
PERMIT SET

FLOOR PLAN -  
PLUMBING

## P2.00



1 PLUMBING FLOOR PLAN—EXISTING BLDG  
SCALE: 1/4" = 1'-0"



**1 PLUMBING FLOOR PLAN**  
 P2.01 SCALE: 1/4" = 1'-0"

**GENERAL NOTES:**

- A. VERIFY ALL EXISTING CONDITIONS RELATIVE TO THE SCOPE OF WORK. DO NOT FABRICATE W/O CONFIRMING SPACE EXISTS, FOR SIZES REQUIRED.
- B. COORDINATE ALL PLUMBING WORK WITH GENERAL CONTRACTOR, CONTROL CONTRACTOR, ELECTRICAL AND ARCHITECTURAL.
- C. PROVIDE 2 INCH MINIMUM WASTE LINE FOR UNDERGROUND INSTALLATIONS.

**PLUMBING KEY NOTES:**

- 1. WATER HEATER: PROVIDE DRAIN PAN. SEE DETAIL 6/P6.01. INSTALL ON FLOOR STAND TO ALLOW FOR GRAVITY DRAINAGE OF DRAIN PIPES TO ADJACENT MOP SINK.
- 2. NEW BUILDING DOMESTIC WATER CONNECTION. PROVIDE SHUT-OFF VALVE.
- 3. VENT THROUGH ROOF SEE P2.02 FOR CONTINUATION.
- 4. -.
- 5. PROVIDE THERMOSTATIC MIXING VALVE AT PUBLIC USE OF SINK/LAV/HW.
- 6. CONDENSATE DRAIN AIR-GAP FITTING. SEE DETAIL 3/P6.01.
- 7. ROUTE COLD, HOT WATER AND HOT WATER RECIRCULATION PIPING ABOVE THE CEILING.
- 8. PROVIDE HOT WATER RECIRCULATION ZONE BALANCING VALVE AND SHUT-OFF VALVE.
- 9. DISHWASHER CONNECTION. SEE DETAIL 8/P6.01.
- 10. REDUCED PRESSURE BACKFLOW PREVENTER. INSTALL HIGH ABOVE JANITOR SINK AND ROUTE FUNNEL DRAIN TO JANITOR'S SINK.
- 11. NEW ADDITION COLD WATER SERVICE. CONNECT TO EXISTING CW LINE JUST ABOVE FLOOR BEFORE THE EXISTING BACKFLOW PREVENTOR.
- 12. -.
- 13. -.
- 14. -.

**South Hillsboro Crossing Clinic**

OHSU Tuality Health care

7529 SE Tualatin Valley Hwy. Hillsboro, Oregon 97123

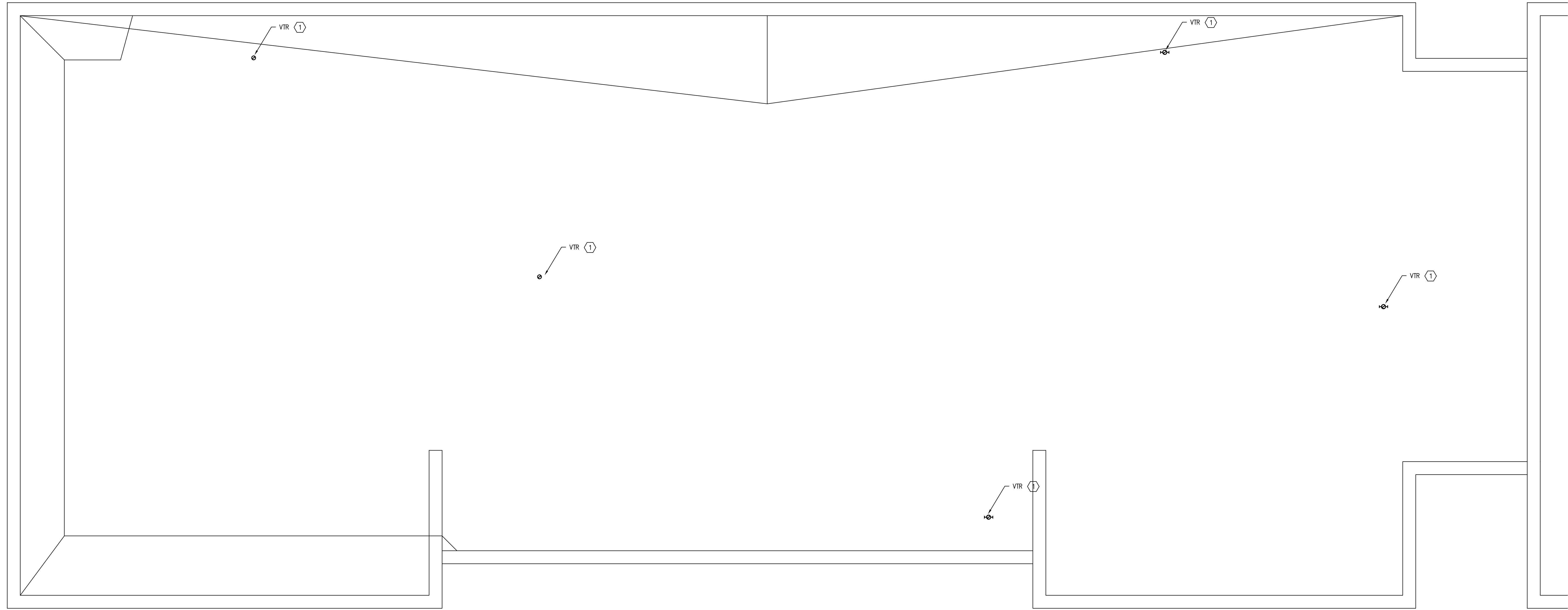


ISSUE DATE: 12.19.18  
 REVISIONS:

FLOOR PLAN - PLUMBING

**P2.01**

PERMIT SET



1 PLUMBING ROOF PLAN  
 P2.02 SCALE: 1/4" = 1'-0"

**GENERAL NOTES:**

- A. VERIFY ALL EXISTING CONDITIONS RELATIVE TO THE SCOPE OF WORK. DO NOT FABRICATE W/O CONFIRMING SPACE EXISTS, FOR SIZES REQUIRED.
- B. COORDINATE ALL PLUMBING WORK WITH GENERAL CONTRACTOR, CONTROL CONTRACTOR, ELECTRICAL AND ARCHITECTURAL.
- C.

**(X) PLUMBING KEY NOTES:**

- 1. VENT THROUGH ROOF, TERMINATE 1 FT ABOVE ROOF. COORDINATE WITH MECHANICAL TO MAINTAIN 10 FT DISTANCE TO ROOF-TOP UNIT'S OUTSIDE AIR INTAKE.
- 2. -.



**South Hillsboro Crossing Clinic**

OHSU Tuality Health care

7529 SE Tualatin Valley Hwy. Hillsboro, Oregon 97123



ISSUE DATE: 12.19.18

REVISIONS:

PERMIT SET

ROOF PLAN -  
 PLUMBING

**P2.02**

