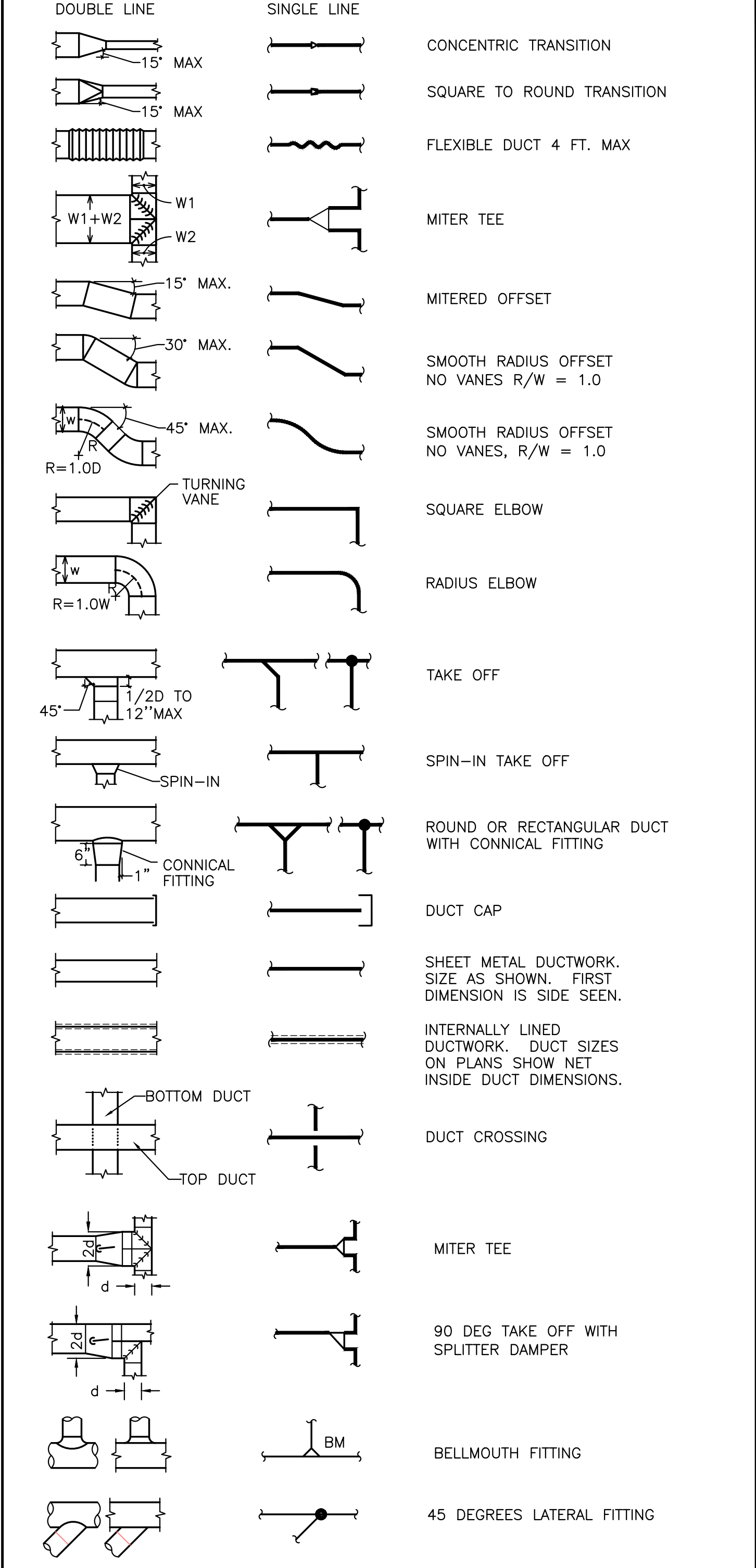


MECHANICAL LEGEND

Table with two columns of symbols and their corresponding mechanical components and units. Includes items like supply air diffuser, return air grille, directional air flow, and various units like feet per minute and gallons per minute.

AIR DISTRIBUTION DETAILS



MECHANICAL GENERAL NOTES

- A. THE DRAWINGS ARE DIAGRAMMATIC. PROVIDE ALL MATERIAL (NEW AND UNDAMAGED) AND LABOR FOR A COMPLETE AND OPERABLE SYSTEM...
B. REFER TO THE MECHANICAL SPECIFICATIONS FOR MATERIALS, EQUIPMENT, AND ADDITIONAL CONSTRUCTION INSTRUCTIONS NOT COVERED BY THESE PLANS...
C. ALL INSTALLATIONS SHALL COMPLY WITH APPLICABLE FEDERAL AND STATE CODES INCLUDING, 2014 OREGON STRUCTURAL SPECIALTY CODE (OSSC)...

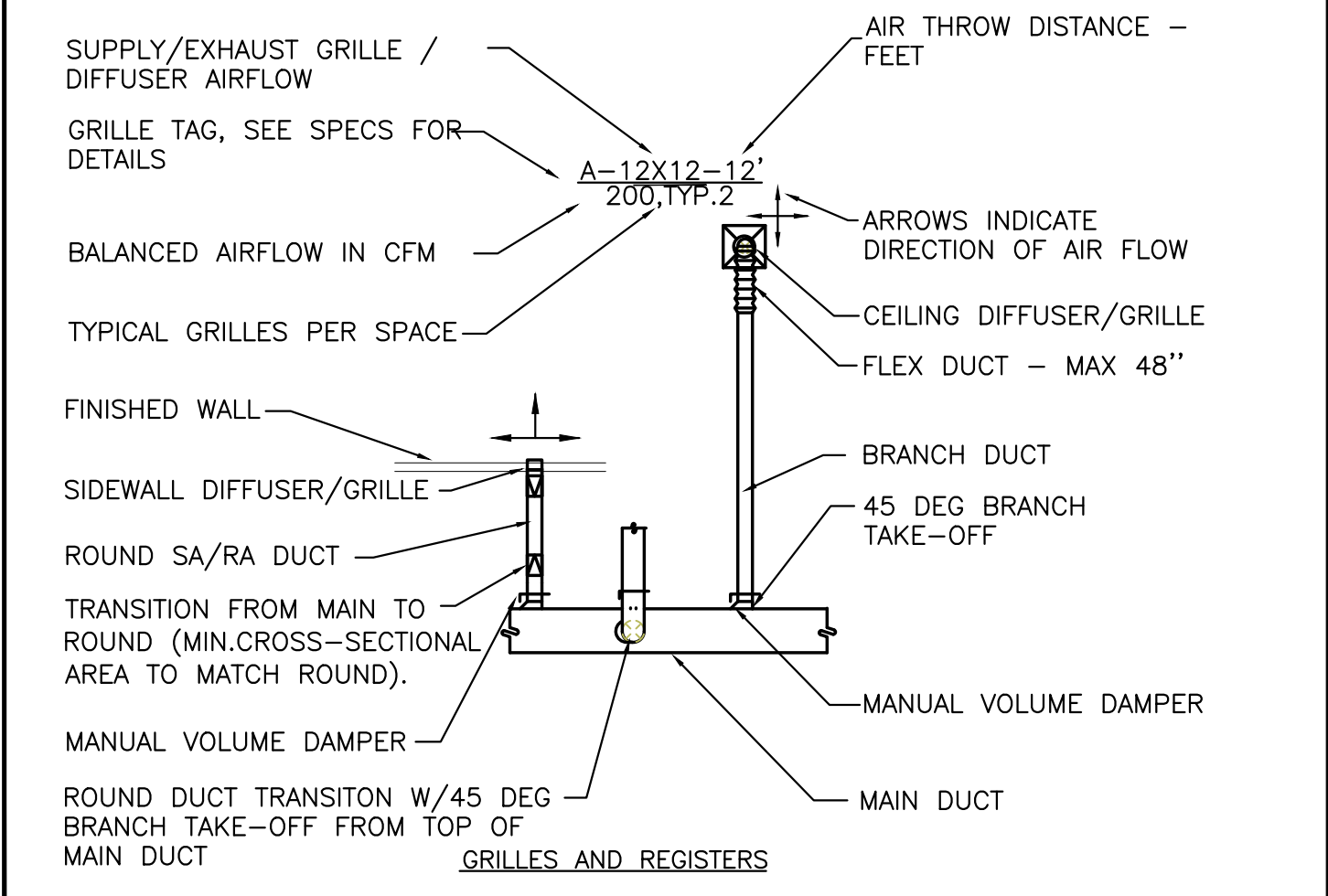
MECHANICAL GENERAL DEMO. NOTES

- A. ALL EXISTING/DEMO INFORMATION ON DRAWINGS IS BASED OFF RECORD DRAWINGS. CONTRACTOR IS RESPONSIBLE TO VERIFY ALL EQUIPMENT, DUCTWORK, PIPING, AND ASSOCIATED SIZE AND LOCATIONS ON SITE PRIOR TO THE NOTED DEMOLITION WORK.
B. REMOVE ALL CONTROL DEVICES AND CONTROL CONDUITS/WIRES WHERE EXPOSED BELOW OR IN THE CEILING PLENUM ABOVE IN THE REMODELED AREA REQUIRING NEW CONTROLS.

DIFFUSER AND REGISTER SCHEDULE

Table with columns: TAG, TYPE, LOCATION - NOTES, MANUFACTURER - MODEL. Lists diffuser types like supply diffuser, return grille, and exhaust grille with their respective locations and models.

NOTES:
[1] PROVIDE NECK SIZE AS SHOWN ON PLANS.
[2] PROVIDE BLADES PARALLEL TO THE LONG DIMENSION AT SIDEWALL GRILLES.
[3] PROVIDE BORDER FOR SURFACE MOUNT OR TILE CEILING AS REQUIRED BY CEILINGS.
[4] NOT USED.
[5] PROVIDE FLOW CONFIGURATION AS SHOWN ON PLANS. THE INDICATED THROW DISTANCE IS FOR 4 WAY BLOW ONLY.



South Hillsboro Crossing Clinic

OHSU Tuality Health care

7529 SE Tualatin Valley Hwy. Hillsboro, Oregon 97123



ISSUE DATE: 12.19.18
REVISIONS:

MECHANICAL LEGEND,
NOTES AND SCHEDULES

M0.01

SPLIT SYSTEM AIR CONDITIONING UNITS SCHEDULE																																	
INDOOR FAN COIL UNIT															OUTDOOR CONDENSING UNIT																		
SYMBOL	SERVES	TYPE	SUPPLY FAN				DX COOLING					COOLING STAGES	SOUND Med. Dba	UNIT MCA/MOP/RLA	UNIT WEIGHT LBS	DESIGN NUMBER	COMPRESSOR			ELECTRICAL MCA/RLA/MOP	SOUND PRESSURE Dba	UNIT WEIGHT LBS	MAX PIPE LENGTH FT	OUTDOOR SUMMER AMBIENT F-DB	EER BTU/H.W	SEER	EMERGENCY POWER	ELECTRICAL SYSTEM MCA/MFA	POWER VOLT/PHASE/HZ	INTERLOCK CONTROL WITH	REMARKS NOTES	DESIGN BASIS DAIKIN	
			OA MAX CFM	SA CFM	SPEED STEPS	WATTS	CAPACITY MBH SENS	TOT	EAT F DB	WB	LAT F DB						WB	REFRIG. LBS+LBS/FT	MIN SEER/EER														MIN SEER/EER
IAC-26	MEDS RM	HIGH WALL	0	300			9.4	10.5	74.8	61.9	58.0	54.7	1	35	0.4 / 15 / -	24	OAC-26	1	=1.54+ 21/FT		16.5 / 7.1 / 20	52	72	49/39	95	10.5	15	NO	8/6/15	208/1/60		1,2,3,4,6,7,8	FTKN12NMVJU , RKN12NMVJU
IAC-37	ELECT RM	HIGH WALL	0	500			12.2	13.5	76.1	62.2	58.0	54.6	1	37		35	OAC-37		=5.1+ 036/FT			49	165	164/98	95	12.7	18.6	NO	208/1/60		1,2,3,4,5,6,7	FAQ18PVJUR2R18PVJU	
NOTES:																																	
1 DISCONNECT SWITCH BY OTHERS. 2 PROVIDE THERMAL OVERLOAD MOTOR PROTECTION. 3 PROVIDE CAPACITY BASED ON REFRIGERANT PIPE LENGTH OF 35 FT ONE WAY AND LEVEL DIFF OF 12 FT. 4 PROVIDE 7-DAY PROGRAMMABLE THERMOSTAT.															5 PROVIDE FACTORY MOUNTED CONDENSATE PUMP AND ROUTE DRAIN TO DISCHARGE PER MANUFACTURER'S REQUIREMENTS AND TO MEET CODE. 6 INDOOR UNIT POWERED FROM OUTDOOR UNIT. SEE MANUFACTURER'S INSTALLATION REQUIREMENTS. 7 PROVIDE REFRIGERANT PIPE SIZING FOR THE ACTUAL INSTALLED CONDITIONS. 8 PROVIDE CONDENSATE PUMP AND ROUTE TO AIR GAP FITTING BELOW SINK. SEE PLUMBING PLANS FOR NEAREST LOCATION.																		
UPDATED: 12/19/2018																																	

EXHAUST FANS SCHEDULE																		
DESIGN SYMBOL	FAN TYPE	SERVES	MOTOR						INLET SONES	DAMPER TYPE	OPER WEIGHT LBS	INTER-LOCK / CONTROL WITH	REMARKS NOTES	DESIGN BASIS MODEL# GREENHECK				
			MIN CFM	MAX CFM	ESP INCHES	FAN RPM	BHP	HP							RPM	DRIVE TYPE	SPEED CONTROLLER	VOLTS/PHASE /HZ
EF-1	ROOF MOUNT	GENERAL EXH	940	940	0.50	1725	0.2	1/4	1725	DIRECT	DIAL	115/1/60	16 IN CURB	9	MOTORIZED	100	1,2,3,4,5,6	CUE-101-VG
EF-2	ROOF MOUNT	ELECTRICAL	80	80	0.20	1725	0.01	1/10	1725	DIRECT	DIAL	115/1/60	16 IN CURB	2	BACKDRAFT	80	1,2,3,4,5,6,7	G-060-VG
NOTES:																		
1 PROVIDE BIRD SCREEN. 2 PROVIDE DIAL ON MOTOR FOR BALANCING. 3 PROVIDE FLEX CONNECTORS AT FAN DUCT CONNECTION(S). 4 FAN SHALL RUN CONTINUOUSLY DURING BUILDING OCCUPANCY.						6 PROVIDE FLEX CONNECTOR AT FAN INLET. 7 FAN SHALL RUN CONTINUOUSLY AND BE SUPERVISED.												
UPDATED: 12/19/2018 17:15																		

ROOF-TOP UNITS SCHEDULE																																												
DESIGN SYMBOL	CONFIG	SERVES	OUTSIDE AIR		SUPPLY FAN			RETURN/EXHAUST FAN				DX COOLING (HFC-410A)								CONDENSER SECTION								GAS HEATING					ZONE TS/STAT CLG/HTG	COOLING ECONO-MIZER	UNIT SMOKE DETECT	UNIT ELECTRICAL DATA				VFD CONTROL	UNIT WEIGHT LBS	INTERLOCK CONTROL WITH	REMARKS NOTES	DESIGN BASIS Trane YHC 17 Plus
			MIN CFM	MAX CFM	SA CFM	ESP [S] IN	BHP	HP	RA CFM	ESP IN	BHP	HP	GROSS CAP. MBH	EAT F	LAT F	FPV ROWS	APD IN WG	MIN EFF SEER	REFRIG. CHRG LBS/CR/	NO / CIRC/S	KW	TYPE	AMB TEMP F	SA CFM	OA CFM	OUTPUT MBH	INPUT MBH	MIN LAT F	AMB F	ENT AIR DB	MIN AFUE Et	TURN [11] DN				POWER VOLT / PHASE/HZ	UNIT FLA	UNIT MCA/MOP	EMERG POWER					
RTU-1	DOWNFLOW		140	1,800	1,800	0.50		1	1,660	0.25	1	49.6	38.2	74.6	61.7	55.7	52.1		17.0	12.5	4	95.2	1,800	140	36.9	45	89	21	70.8	80%	-	75/72	YES	NO	208/3/60	32.2/45	NO	NO	1356	1,2,3,4,5,6,7,9,11,12,16,17,18,20	60			
RTU-2	DOWNFLOW		180	1,470	1,470	0.55		1	1,290	0.30	1	43.9	32.3	75.3	62.2	55.7	51.8		17.0	11	4	95.2	1,470	180	32.0	39	91	21	70.8	80%	-	75/72	YES	NO	208/3/60	29.4/40	NO	NO	1284	1,2,3,4,5,6,7,9,11,12,16,17,18	48			
RTU-3	DOWNFLOW		210	1,370	1,370	0.55		1	1,160	0.30	1	43.1	31.1	75.8	63.9	55.7	53.4		17.0	10.8	4	95.2	1,370	210	42.5	62	95	21	66.7	80%	-	75/72	YES	NO	208/3/60	29.4/40	NO	NO	1284	1,2,3,4,5,6,7,11,12,16,17,18	48			
RTU-4	DOWNFLOW		180	1,830	1,830	0.55		1	1,580	0.35	1	53.1	39.3	74.8	62.9	55.7	53.0		17.0	12.5	4	95.2	1,830	180	53.5	65	96	21	69.7	80%	-	75/72	YES	NO	208/3/60	32.2/45	NO	NO	1356	1,2,3,4,5,6,7,11,12,16,17,18,20	60			
RTU-5	DOWNFLOW		240	1,020	1,020	0.55		0.75	830	0.3	1	33.5	23.6	76.4	64.3	55.7	53.3		17	8	3	95.2	1,020	240	21.0	26	81	21	62.2	80%	-	75/72	YES	NO	208/3/60	23.3/30	NO	NO	1085	1,2,3,4,5,6,7,11,12,16,21	36			
RTU-6	DOWNFLOW		360	1,200	1,200	0.55		1	780	0.25	1	43.6	29.8	77.9	65.4	55.7	53.4		17	11	4	95.2	1,200	360	30.0	37	81	21	58.4	80%	-	75/72	YES	NO	208/3/60	29.4/40	NO	NO	1284	1,2,3,4,5,6,7,11,12,16,17,18,20	48			
RTU-7	DOWNFLOW		320	1,440	1,440	0.65		1	1,310	0.35	1	52.3	34.1	76.9	65.0	55.7	53.0		17	13	4	95.2	1,440	320	53.2	65	97	21	63.0	80%	-	75/72	YES	NO	208/3/60	32.2/45	NO	NO	1356	1,2,3,4,5,6,7,11,12,16,17,18	60			
NOTES:																																												
1 PROVIDE 12 IN HIGH SEISMIC RESTRAINED ROOF CURB WITH SPRING VIBRATION ISOLATION. 2 FILL CURB VOID WITH LAYERS OF ACOUSTICAL BATT INSULATION AND GYP BD. 3 PROVIDE DIRTY FILTER GAUGES W/SWITCH. 4 PROVIDE 2 IN MERV13 FILTERS. 5 INCLUDES FILTER LOADING PRESSURE DROP.											6 PROVIDE DRYBULB AND ENTHALPY CONTROL FOR OSA ECONOMIZER. 7 PROVIDE 7-DAY PROGRAMMABLE THERMOSTAT. 8 PROVIDE CO2 SENSOR FOR DCV CONTROL. 9 PROVIDE SPACE PRESSURE FOR RELIEF FAN CONTROL. 10 NOT USED.											11 PROVIDE 2 GAS BURNERS. 12 NOT USED. 13 NOT USED. 14 NOT USED. 15 NOT USED.					16 DISCONNECT SWITCH AND SERVICE RECEPTACLES BY ELECTRICAL. 17 PROVIDE LOW LEAK MODULATING ECONOMIZER WITH RELIEF FAN FOR FULL RETURN AIRFLOW (POWER: 208V, 3PH, 60 HZ, 3.5 FLA). 18 ECONOMIZER WILL BE POWERED BY THE ROOF-TOP UNITS SINGLE POINT CONNECTION; PROVIDE FIELD WIRING. 20 PROVIDE RETURN DUCT MOUNTED CO2 SENSOR FOR DCV CONTROL. 21 PROVIDE MANUFACTURER'S STANDARD UNIT MOUNTED POWER EXHAUST FOR ECONOMIZER CONTROL.																	
UPDATED: 12/19/2018 17:29																																												

**South Hillsboro Crossing Clinic**  
 OHSU Tuality Health care

7529 SE Tualatin Valley Hwy. Hillsboro, Oregon 97123



ISSUE DATE: 12.19.18  
 REVISIONS:

MECHANICAL SCHEDULES

**M0.02**

PERMIT SET



Consulting Engineers  
 2007 S.E. Ash St.  
 Portland, OR 97214  
 PHN: (503) 234-0548  
 FAX: (503) 234-0577  
 WWW.MFA-ENG.COM  
 CONTACT: Mariana Galofteanu

OUTSIDE AIR MECHANICAL CODE AND OAR CODE ANALYSIS. Table with columns: UNIT, ROOM, REMARKS, MECH CODE CLASSIFICATION, SPACE AREA (FT^2) - Az, OCCUPANCY (PEOPLE / 1000FT^2), PLUMBING FIXTURES, OSA CFM / PERSON (FIXTURE) - Rp, OSA CFM/FT^2 - Ra, EA REQUIRED CFM / FIXTURE OR SF, CODE PEOPLE, DESIGN PEOPLE (FIXTURE) Pz, OCCUPANT OSA CFM Vbzp =Rp/Pz, AREA OSA CFM Vbza =Ra/Az, MECH CODE REQUIRED EXHAUST CFM, PROVIDED 100% EXHAUST CFM (2), REQUIRED OSA CFM Vbz =Sum(Vbz), MECH CODE REQD OSA CFM Voz =Vbz/Ez, MAXIMUM PROVIDED ROOM SUPPLY AIR CFM, MINIMUM PROVIDED OSA SUPPLY AIR CFM Vbz, ZONE EFFECT FACTOR Ez(3), MAXIMUM OUTDOOR AIR FRACTION Zp =Voz/Vbz, SYSTEM VENTILATION EFFICIENCY AT MAX Zp - Ev (4)=100%DIRECT OSA=1, OCCUPANT DIVERSITY - D =Ps/(sum Pz) > Sum(Rp x Az), UNCORRECTED OA INTAKE - Vou = DxSum(Rp x Az), MIN CODE OUTDOOR AIR CFM - Vot = Vou / Ev, OUTDOOR AIR INTAKE CFM - Vot, PROVIDED MINIMUM OSA CFM (1).

NOTES:

- (1) OUTDOOR AIR SUPPLIED DIRECTLY THROUGH THE AIR-HANDLING UNIT. (2) ADDITIONAL EXHAUST AIR WILL BE PROVIDED BY TRANSFER ROOM AIR NOT OSA. (3) CEILING SUPPLY OF COOL AIR. (4) ADDITIONAL OUTSIDE AIR REQUIRED TO PROVIDE AIR FOR SPACE PRESSURIZATION AND REPLENISH EXHAUSTED AIRFLOW. (5) SPACE MUST BE NEGATIVE TO THE SURROUNDING SPACES.

South Hillsboro Crossing Clinic

OHSU Tuality Health care

7529 SE Tualatin Valley Hwy. Hillsboro, Oregon 97123



ISSUE DATE: 12.19.18 REVISIONS:

MECHANICAL SCHEDULES

M0.03

M Consulting Engineers 2007 S.E. Ash St. Portland, OR 97214 PHN: (503) 234-0548 FAX: (503) 234-0577 CONTACT: Mariana Galafreanu

PERMIT SET



# South Hillsboro Crossing Clinic

OHSU Tuality Health care

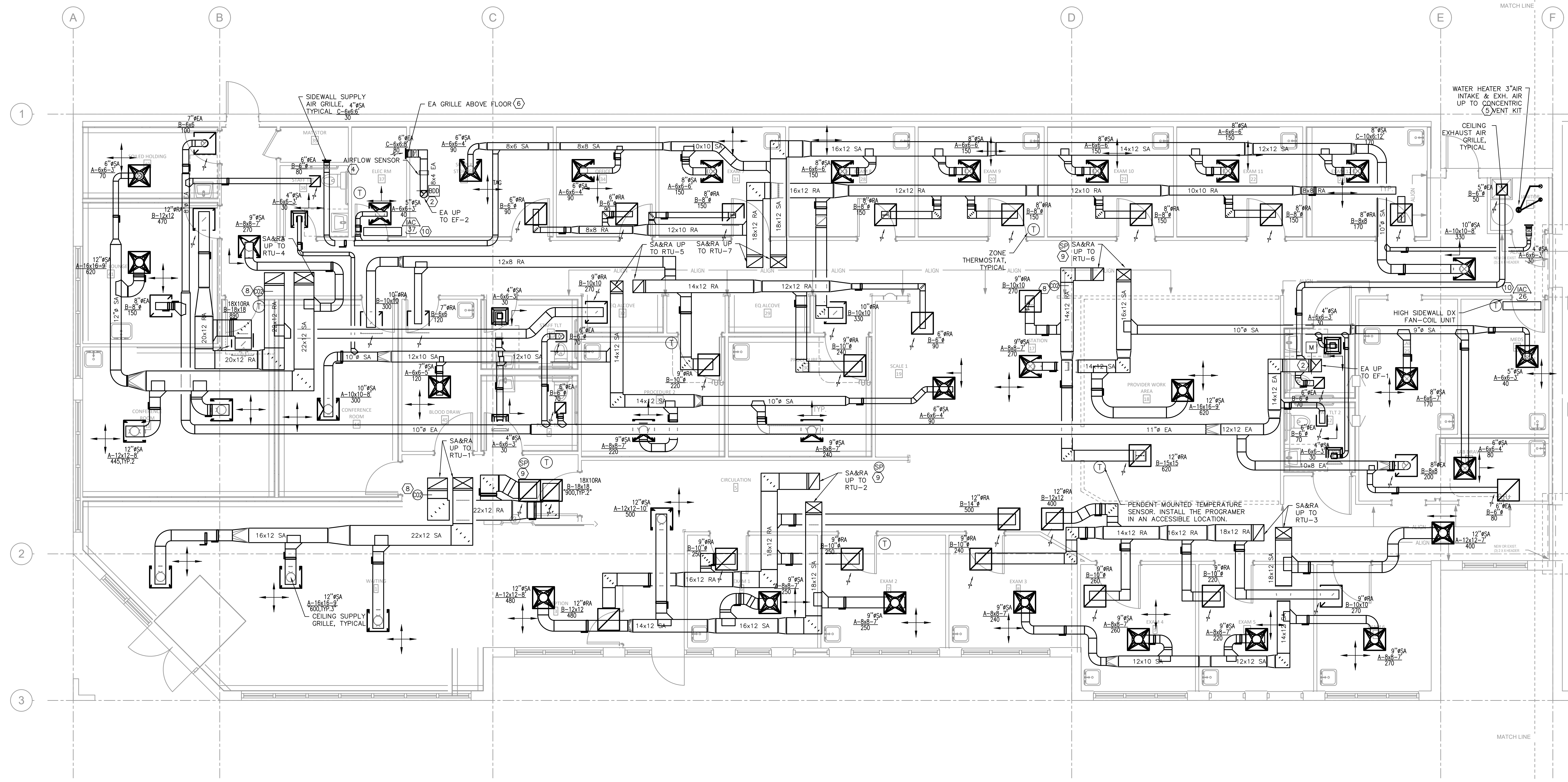
7529 SE Tualatin Valley Hwy. Hillsboro, Oregon 97123



ISSUE DATE: 12.19.18  
REVISIONS:

FLOOR PLAN - MECHANICAL  
**M2.01**

PERMIT SET



**1** HVAC FLOOR PLAN  
M2.01 SCALE: 1/4" = 1'-0"

**GENERAL NOTES:**

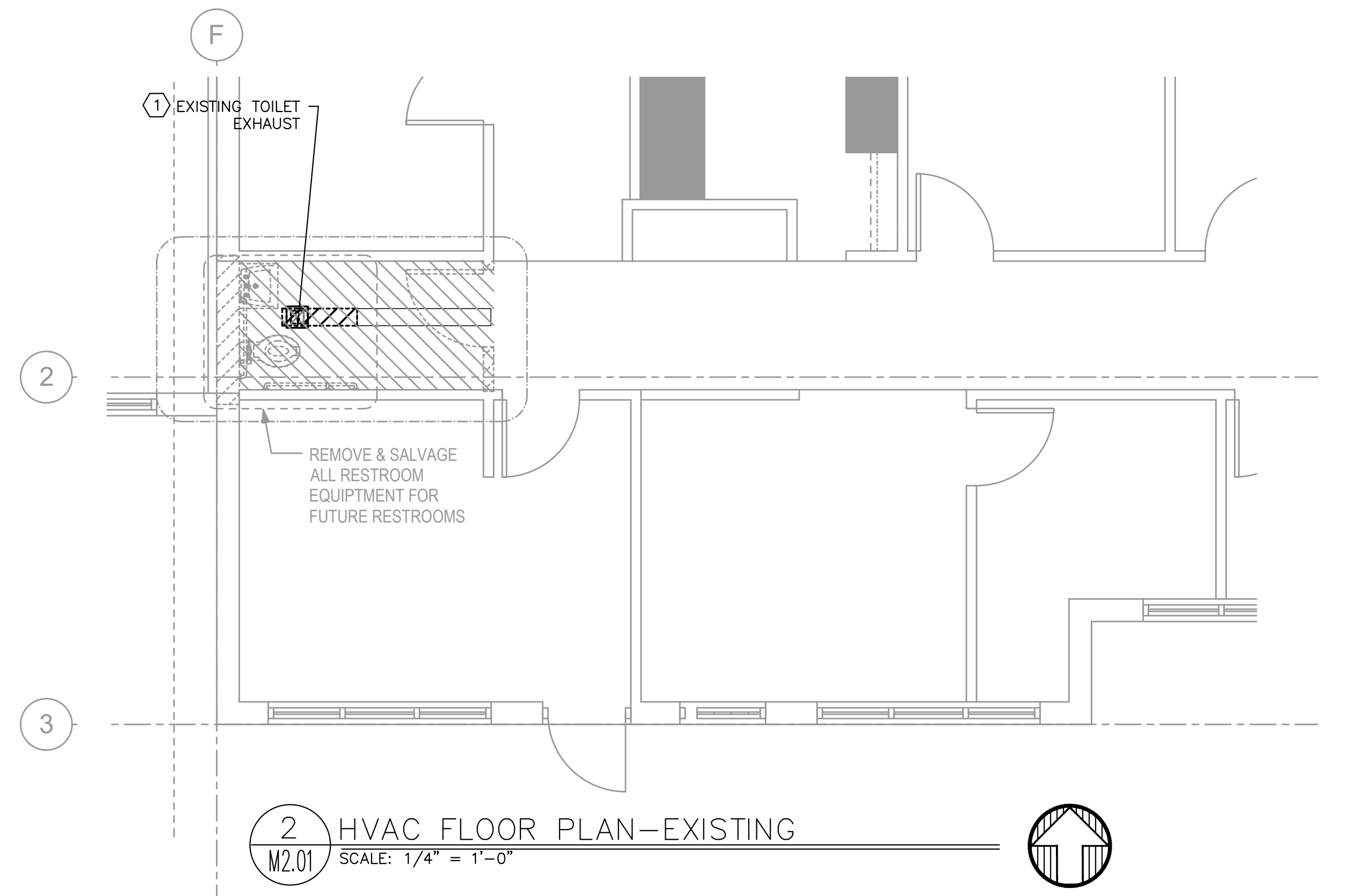
- A. VERIFY ALL EXISTING CONDITIONS RELATIVE TO THE SCOPE OF WORK. DO NOT FABRICATE W/O CONFIRMING SPACE EXISTS, FOR SIZES REQUIRED.
- B. COORDINATE ALL WORK WITH GENERAL CONTRACTOR, CONTROL CONTRACTOR, ELECTRICAL AND ARCHITECTURAL.
- C. PROVIDE FLEXIBLE DUCTS TO CEILING SUPPLY AIR DIFFUSERS. SEE DETAIL 1/M6.10 FOR SUPPLY DIFFUSERS AND DETAIL 3/M6.10 FOR RETURN AIR CEILING GRILLES.
- D. INSULATE ALL SUPPLY AND RETURN AIR DUCTWORK ABOVE THE CEILING. PROVIDE ADDITIONAL SPACE FOR 2" IN INSULATION OR DUCT FLANGES AROUND DUCTWORK.
- E. INSULATE ALL OUTSIDE AIR AND EXHAUST AIR DUCTWORK ABOVE THE CEILING. LOCATE OUTSIDE AIR AND EXHAUST AIR DUCTWORK JUST BELOW THE ROOF LEVEL AND ABOVE THE CEILING. PROVIDE ADDITIONAL SPACE FOR 2" IN INSULATION OR DUCT FLANGES AROUND DUCTWORK.

**(X) MECHANICAL KEY NOTES:**

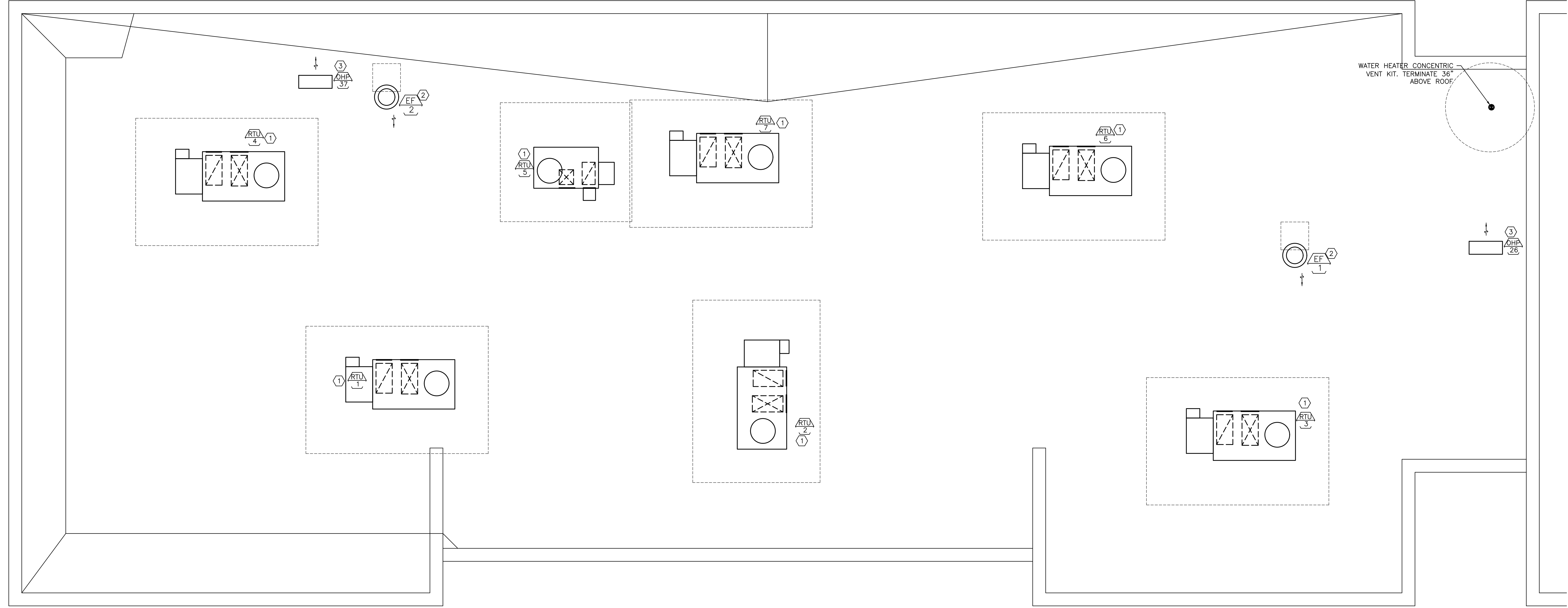
1. REMOVE (E) EXHAUST AIR GRILLE AND DUCTWORK BACK TO MAIN CAP DUCT AT MAIN.
2. EXHAUST AIR UP TO ROOF. PROVIDE MOTORIZED DAMPER AT PENETRATION
3. EXHAUST AIR UP TO ROOF. PROVIDE BACK-DRAFT DAMPER.
4. AIRFLOW SWITCH FOR AIRFLOW MONITORING.
5. PROVIDE CONCENTRIC DIRECT VENT TO ROOF AT WATER HEATER, SEE DETAIL 9/M6.10.
6. VRLA BATTERY ROOM EXHAUST FAN TO RUN CONTINUOUSLY. ROUTE DUCTWORK TO LOW SIDEWALL EXHAUST GRILLE 6" ABOVE FLOOR LEVEL. PROVIDE FAN OPERATION SUPERVISED BY FIRE CODE APPROVED SYSTEM TO INITIATE AN AUDIBLE AND VISUAL ALARM AT A

**CONSTANTLY ATTENDED ONSITE LOCATION.**

7. HIGH SIDEWALL GRILLE: INSTALL IN OVERHEAD WALL.
8. PROVIDE CO2 SENSOR FOR DCV CONTROL OF ROOF-TOP UNIT TO CONTROL VENTILATION AIR DAMPER AND RELIEF AIR FAN.
9. PROVIDE SPACE PRESSURE CONTROL OF ECONOMIZER RELIEF FAN.
10. HIGH WALL DX FAN-COIL UNIT. PROVIDE CONDENSATE AND ROUTE TO DISCHARGE LOCATION PER CODE.



**2** HVAC FLOOR PLAN-EXISTING  
M2.01 SCALE: 1/4" = 1'-0"



1 HVAC ROOF PLAN  
 M2.02 SCALE: 1/4" = 1'-0"

**GENERAL NOTES:**

- A. VERIFY ALL EXISTING CONDITIONS RELATIVE TO THE SCOPE OF WORK. DO NOT FABRICATE W/O CONFIRMING SPACE EXISTS, FOR SIZES REQUIRED.
- B. COORDINATE ALL WORK WITH GENERAL CONTRACTOR, CONTROL CONTRACTOR, ELECTRICAL AND ARCHITECTURAL.
- C.

**MECHANICAL KEY NOTES:**

- 1. ROOF-TOP UNIT WITH DX COOLING AND GAS HEATING ON ROOF. INSTALL UNIT ON SPRING ISOLATION ROOF CURB. PROVIDE FLEXIBLE DUCT CONNECTIONS TO UNIT. PROVIDE DUCT LINER ON SUPPLY AND RETURN DUCTS FOR A MINIMUM OF 15FT RUN. SEE DETAIL 7/M6.10
- 2. EXHAUST FAN. PROVIDE FLEXIBLE DUCT CONNECTION. FOR INSTALLATION SEE DETAIL 4/M6.10.
- 3. CONDENSING UNIT ON ROOF SUPPORT. SEE DETAIL 6/M6.10.
- 4. -.



**South Hillsboro Crossing Clinic**  
 OHSU Tuality Health care  
 7529 SE Tualatin Valley Hwy. Hillsboro, Oregon 97123

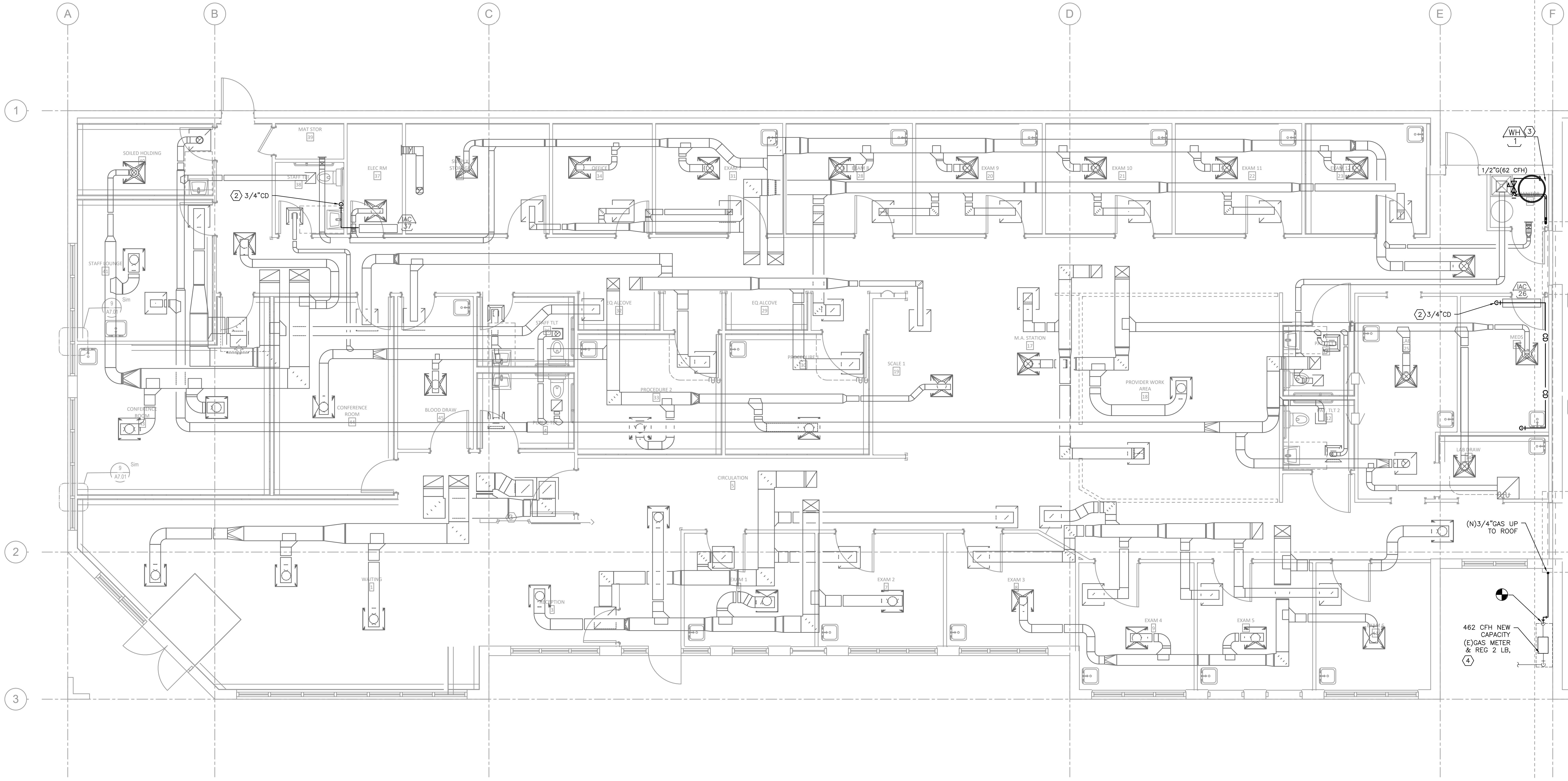


ISSUE DATE: 12.19.18  
 REVISIONS:

PERMIT SET

ROOF PLAN - MECHANICAL

**M2.02**



1 HVAC PIPING FLOOR PLAN  
 M3.01 SCALE: 1/4" = 1'-0"

GENERAL NOTES:

- A. VERIFY ALL EXISTING CONDITIONS RELATIVE TO THE SCOPE OF WORK. DO NOT FABRICATE W/O CONFIRMING SPACE EXISTS, FOR SIZES REQUIRED.
- B. COORDINATE ALL WORK WITH GENERAL CONTRACTOR, CONTROL CONTRACTOR, ELECTRICAL AND ARCHITECTURAL.
- C.

MECHANICAL KEY NOTES:

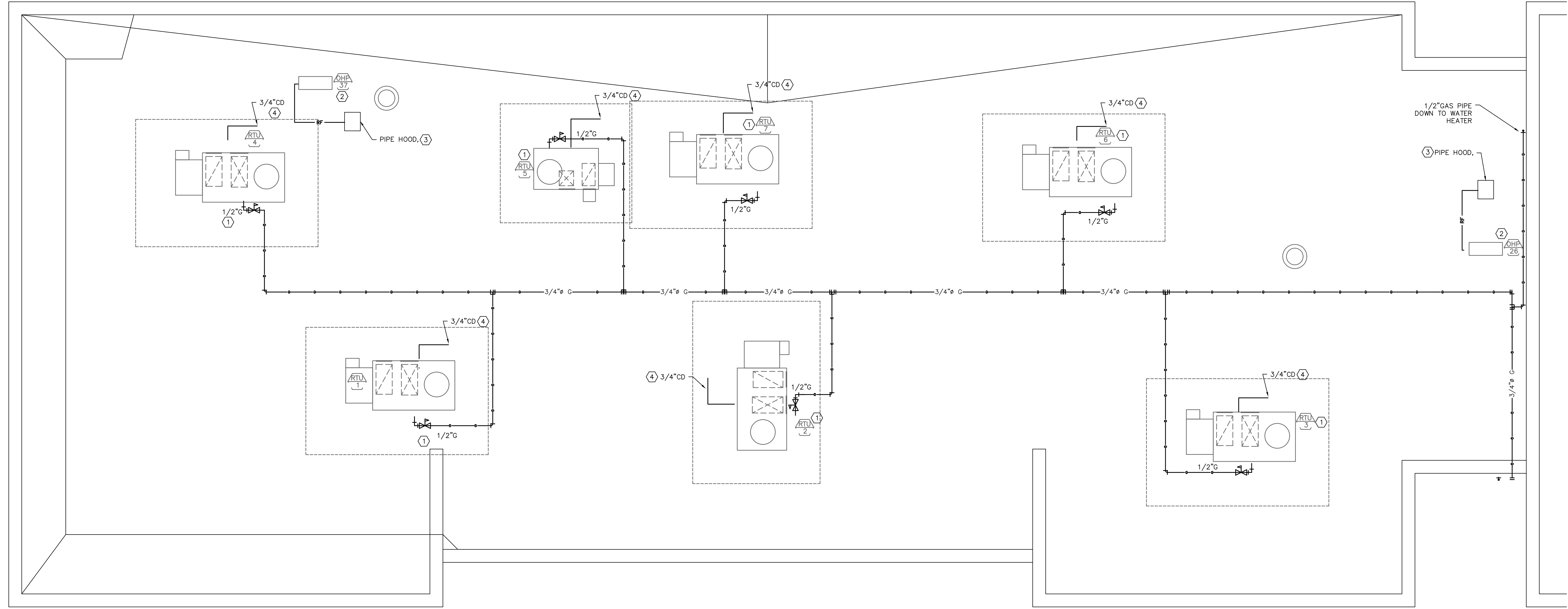
1. EXISTING GAS METER SIZE SHALL BE VERIFIED WITH THE GAS SERVICE COMPANY.
2. FAN COIL UNIT BELOW CEILING. PROVIDE CONDENSATE DRAIN, SLOPE TO DRAIN AND DRAIN TO AIR GAP FITTING, 3/4" MIN PIPE SIZE. SEE PLUMBING PLANS FOR LOCATIONS.
3. GAS WATER HEATER. PROVIDE 3/4" GAS LINE AND PRESSURE REGULATOR (2 PSI TO 14 IN W.C.). SEE DETAIL 3/M6.20.
4. EXISTING GAS METER SIZE SHALL BE VERIFIED WITH THE GAS SERVICE COMPANY.
- 5.



**South Hillsboro Crossing Clinic**  
 OHSU Tuality Health care  
 7529 SE Tualatin Valley Hwy. Hillsboro, Oregon 97123



ISSUE DATE: 12.19.18  
 REVISIONS:



**1 HVAC PIPING ROOF PLAN**  
 M3.02 SCALE: 1/4" = 1'-0" 

**GENERAL NOTES:**

- A. VERIFY ALL EXISTING CONDITIONS RELATIVE TO THE SCOPE OF WORK. DO NOT FABRICATE W/O CONFIRMING SPACE EXISTS, FOR SIZES REQUIRED.
- B. COORDINATE ALL WORK WITH GENERAL CONTRACTOR, CONTROL CONTRACTOR, ELECTRICAL AND ARCHITECTURAL.
- C.

**MECHANICAL KEY NOTES:**

- 1. ROOF-TOP UNITS WITH DX COOLING AND GAS HEATING ON ROOF. PROVIDE GAS PRESSURE REGULATOR (SEE ROOF-TOP UNIT SCHEDULE FOR GAS LOAD) AND 14 IN WC DOWNSTREAM PRESSURE. PROVIDE REGULATOR APPROVED FOR OUTDOOR INSTALLATION. SEE DETAIL 3/M6.20.
- 2. CONDENSING UNIT ON ROOF. PROVIDE REFRIGERANT LINE-SET TO PERTAINING FAN-COIL UNIT INSIDE THE BUILDING. SEE DETAIL 6/M6.10.
- 3. ROUTE REFRIGERANT PIPING ABOVE ROOF. PROVIDE PIPE HOOD AT ROOF PENETRATION. SEE DETAIL 4/M6.20.
- 4. PROVIDE TRAPPED 3/4" CONDENSATE DRAIN WITH CLEAN-OUT AT UNIT PER MANUFACTURER'S REQUIREMENTS. SEE DETAIL 4/6.20. ROUTE OVER ROOF SPLASH BLOCK AND DAYLIGHT.



**South Hillsboro Crossing Clinic**

OHSU Tuality Health care

7529 SE Tualatin Valley Hwy. Hillsboro, Oregon 97123

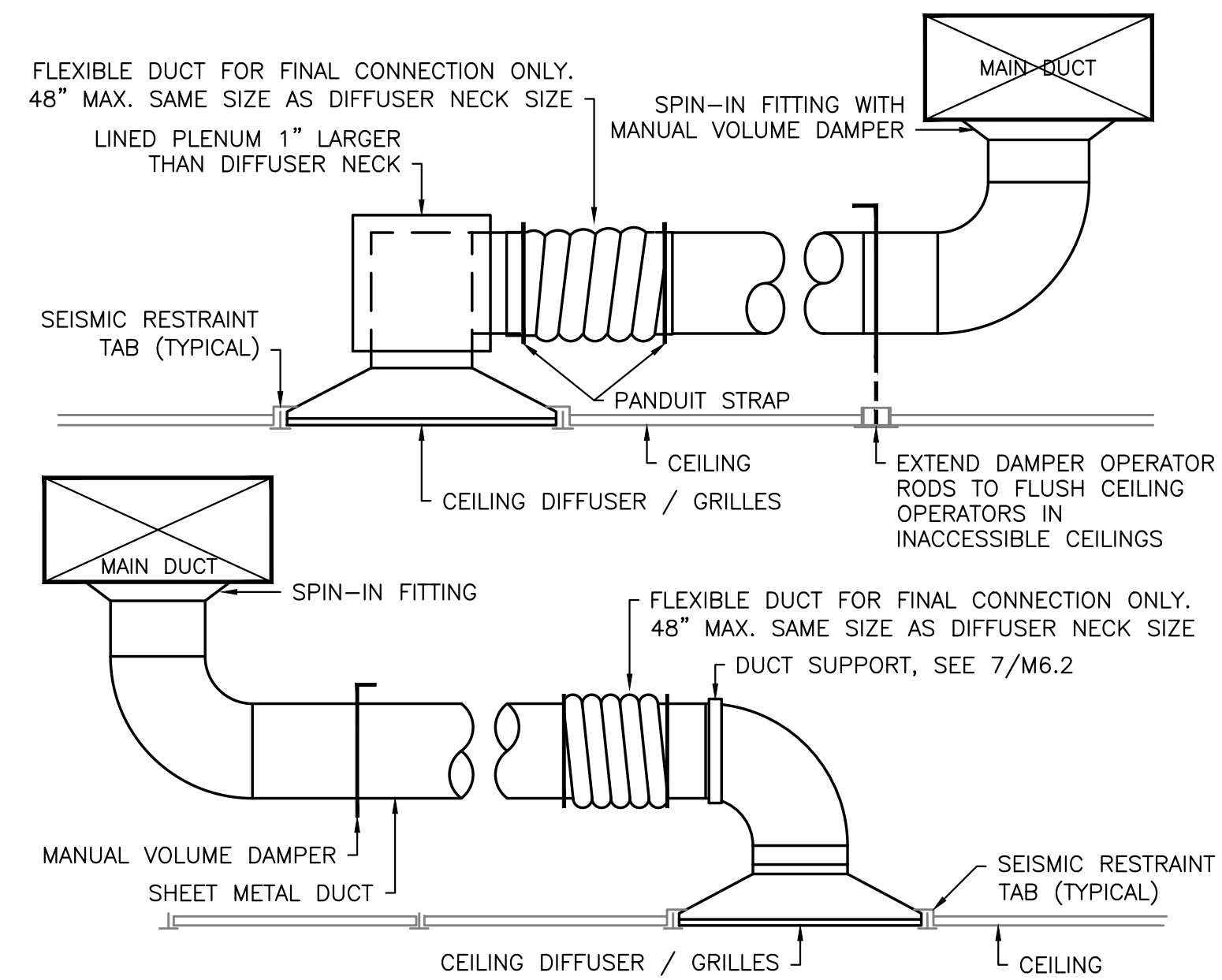


ISSUE DATE: 12.19.18  
 REVISIONS:

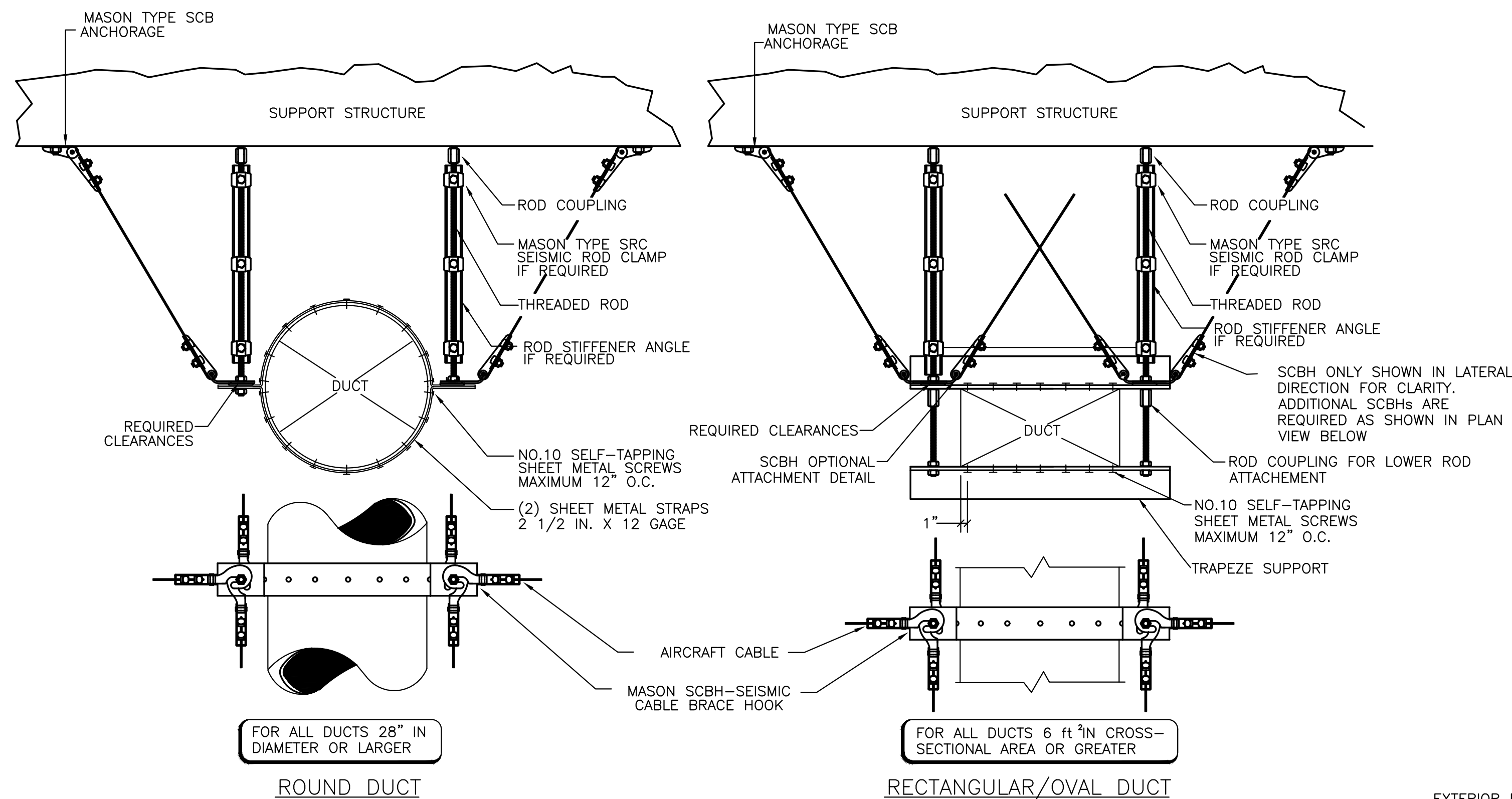
PERMIT SET

PIPING ROOF PLAN - MECHANICAL

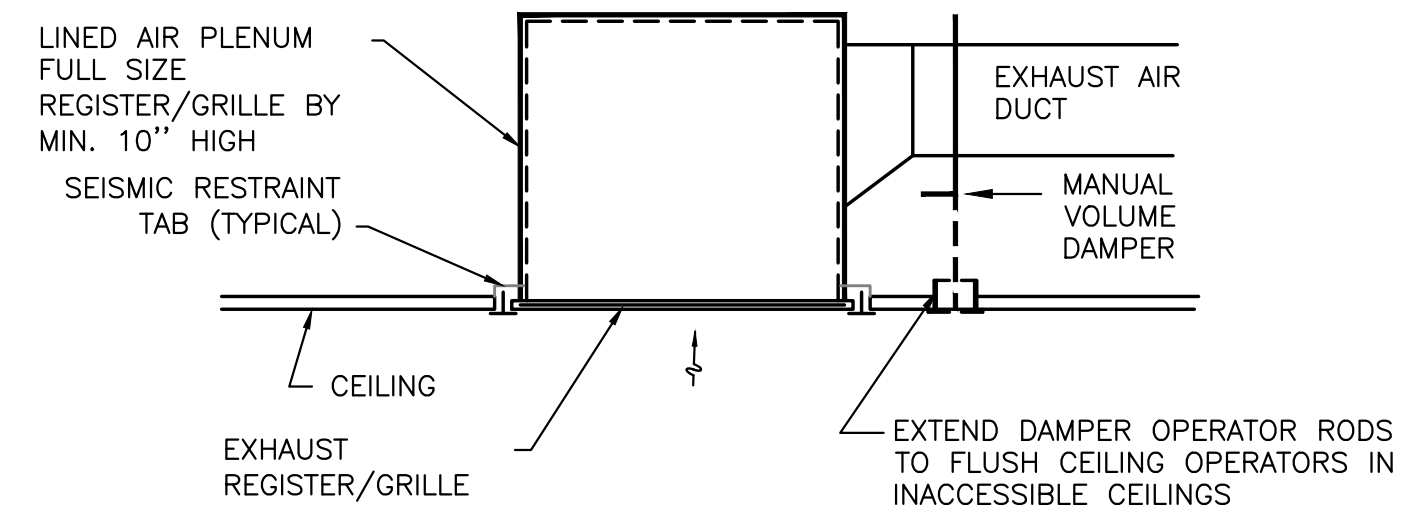
**M3.02**



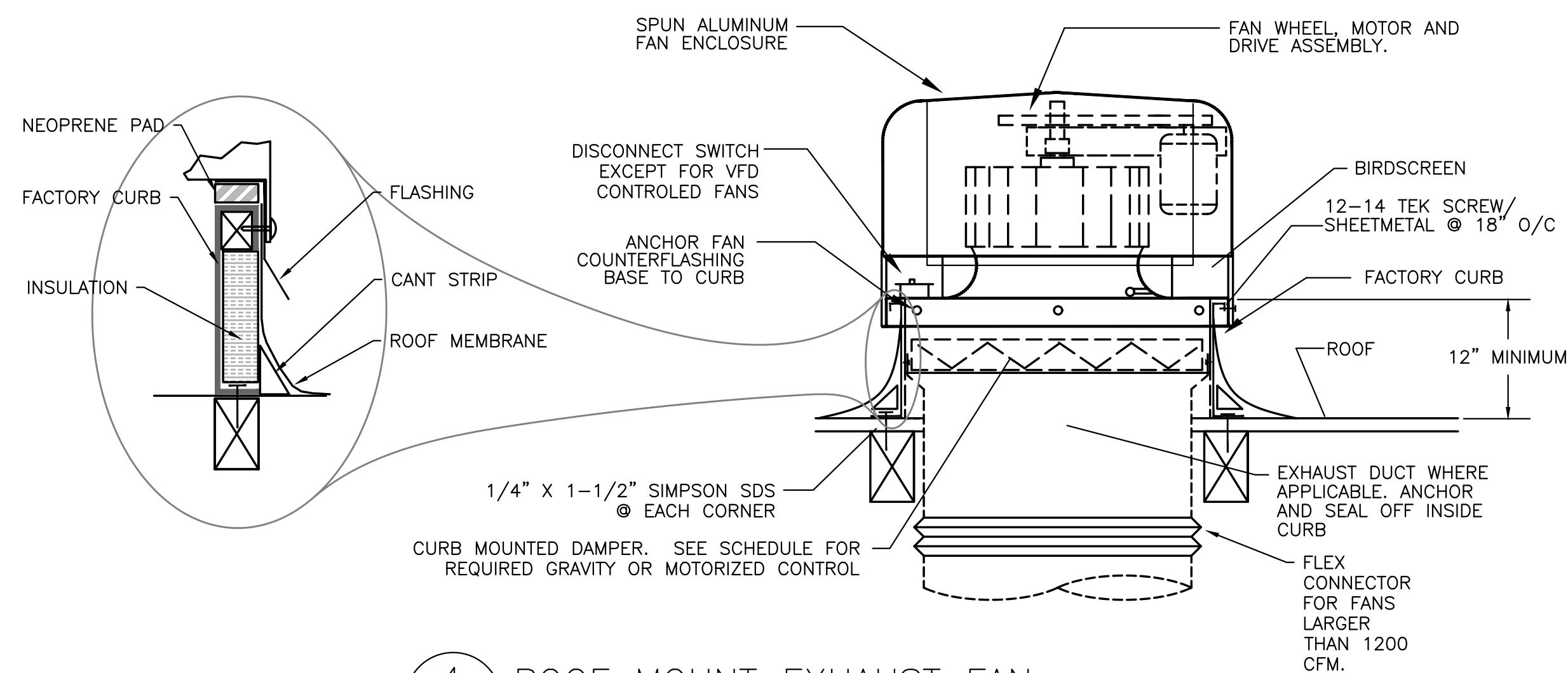
**1** CEILING SA DIFFUSER DETAIL  
SCALE: DETAIL



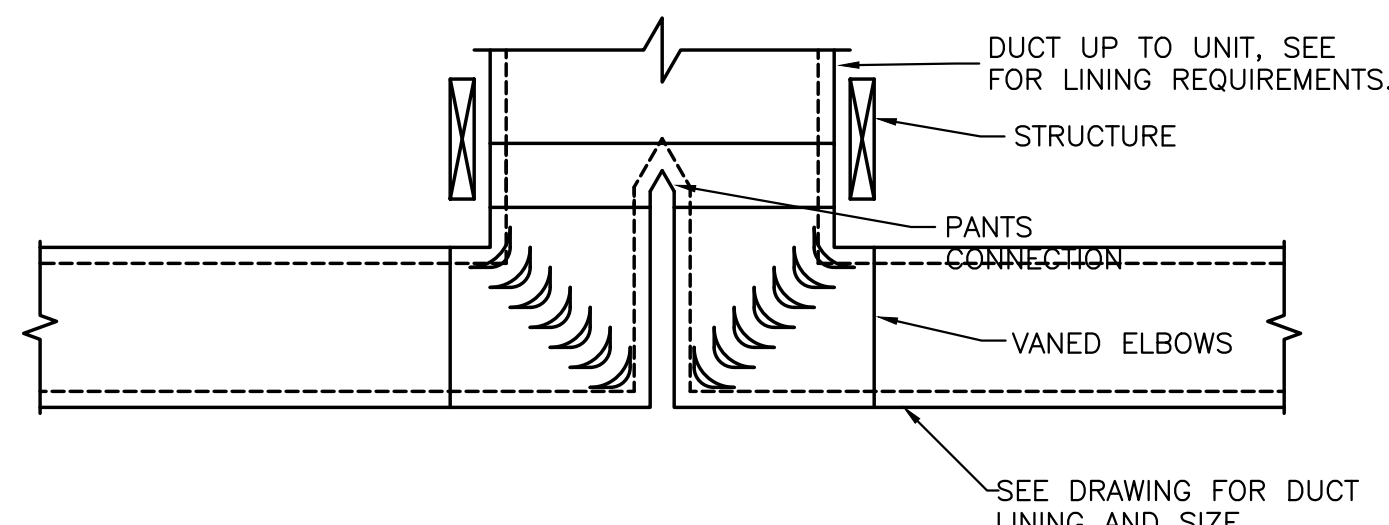
**2** SEISMIC DUCT SUPPORT  
SCALE: DETAIL



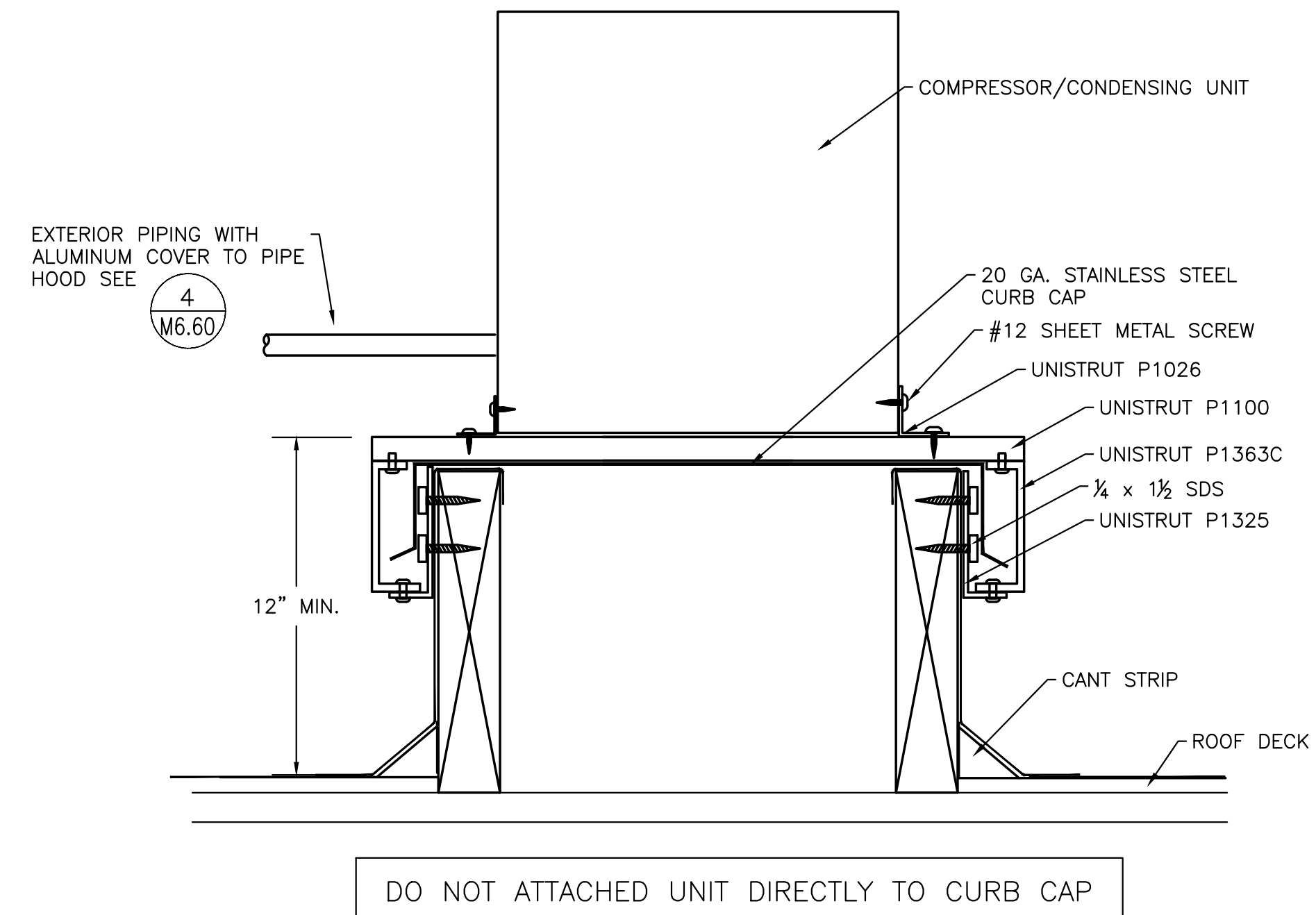
**3** EXHAUST AIR GRILLE DETAIL  
SCALE: DETAIL



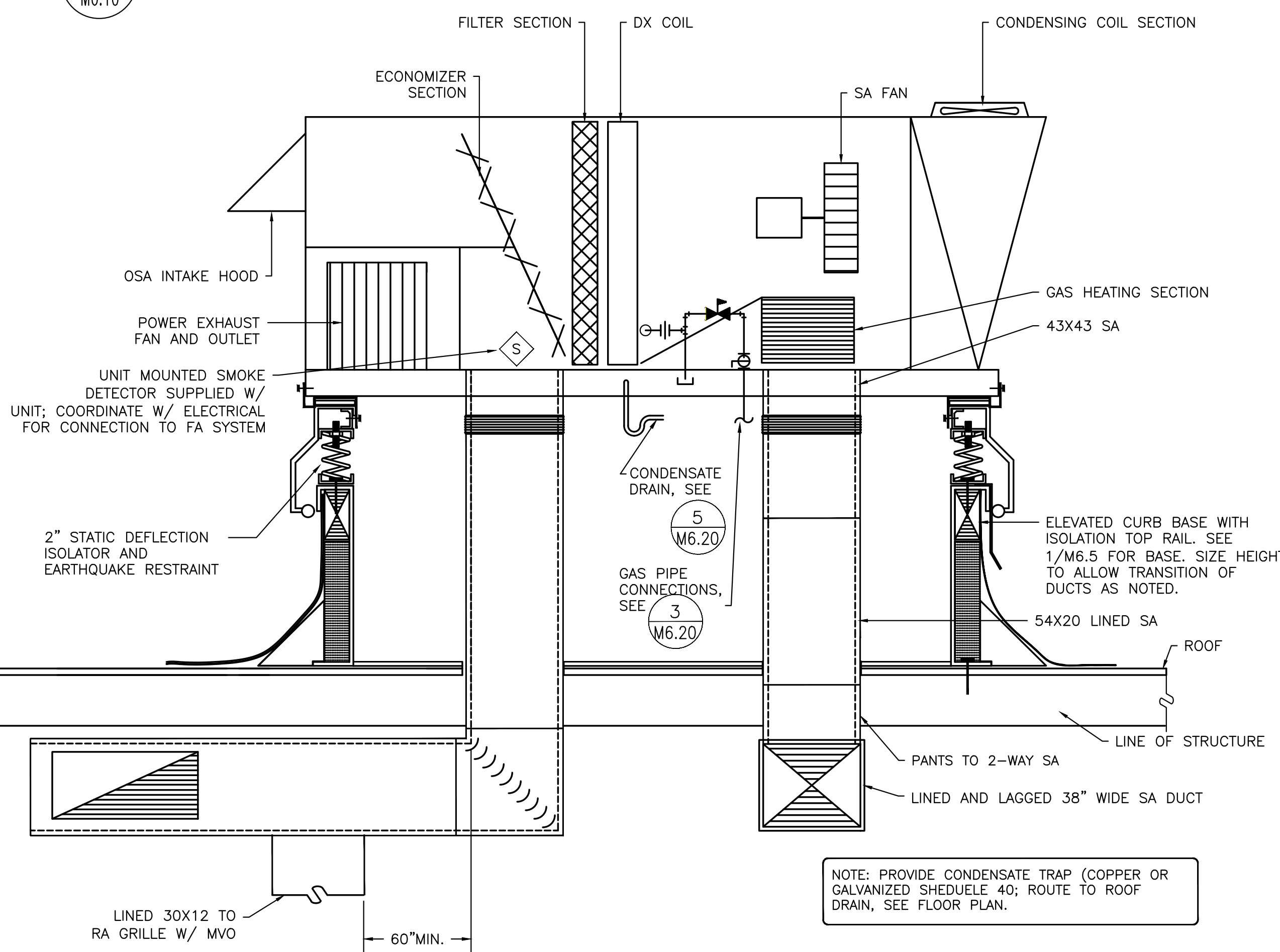
**4** ROOF MOUNT EXHAUST FAN  
SCALE: DETAIL



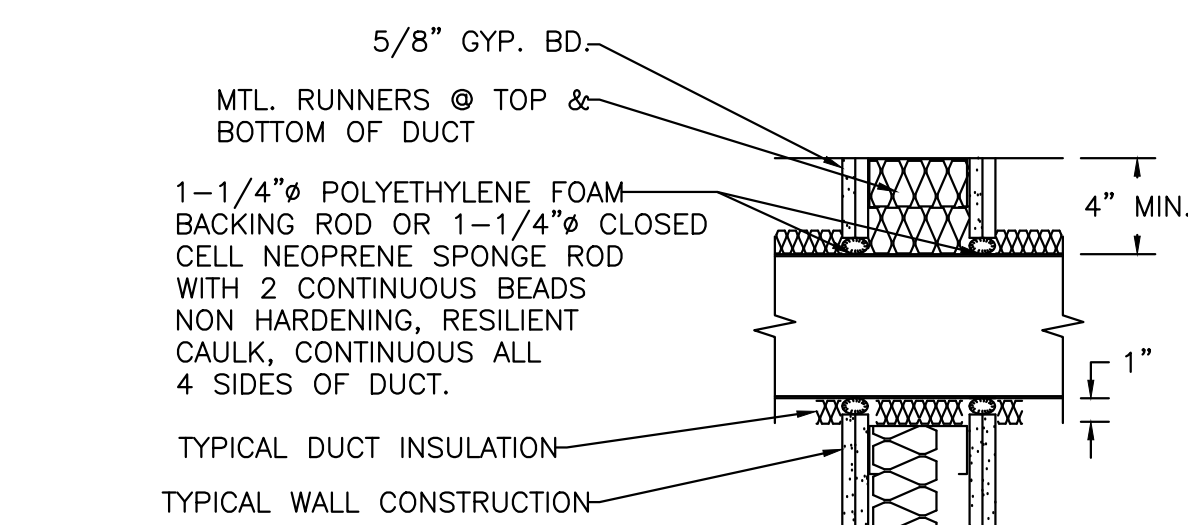
**5** DUCT DROPS  
SCALE: DETAIL



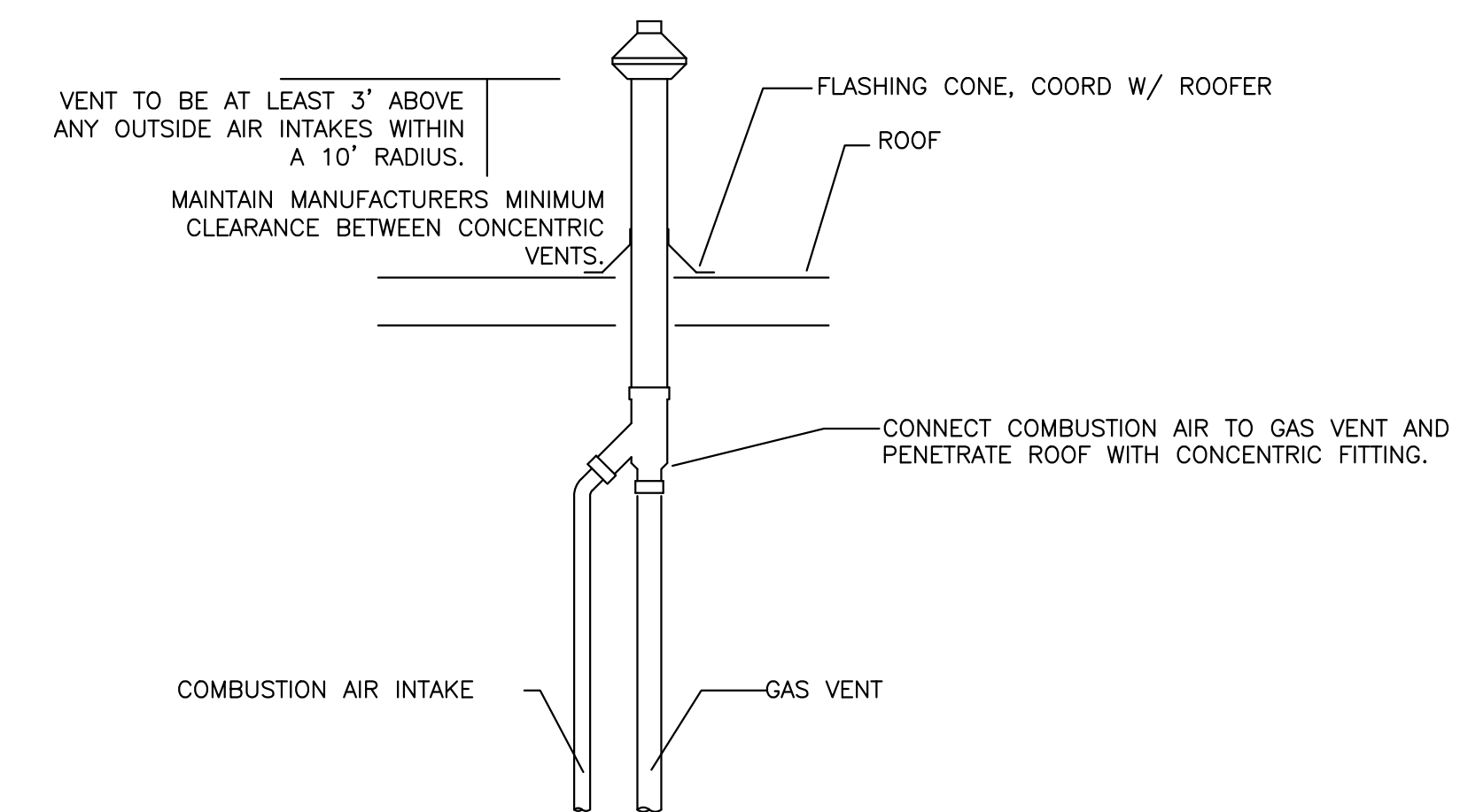
**6** SMALL CONDENSING UNIT DETAIL  
SCALE: DETAIL



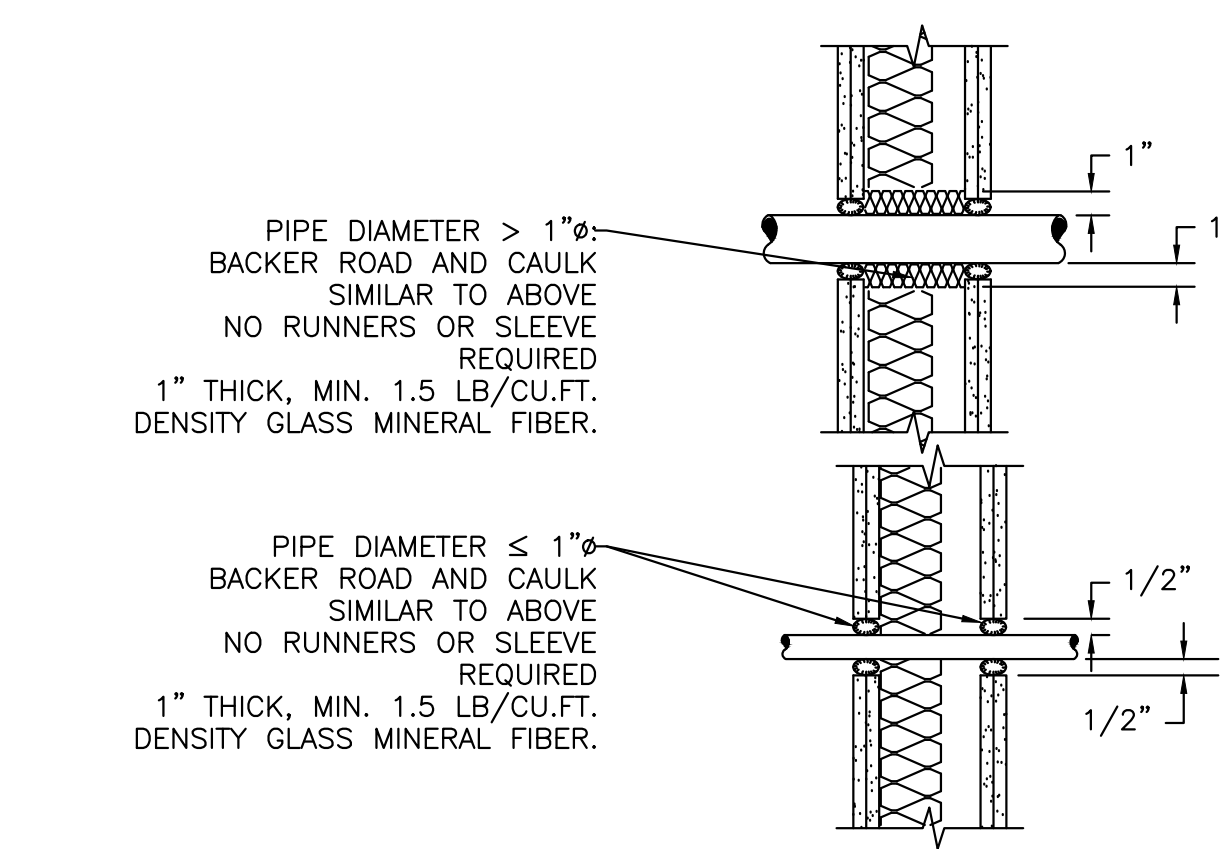
**7** ROOFTOP UNIT W/ ISO CURB  
SCALE: DETAIL



**8** ACOUSTICAL MECHANICAL PENETRATION  
SCALE: DETAIL



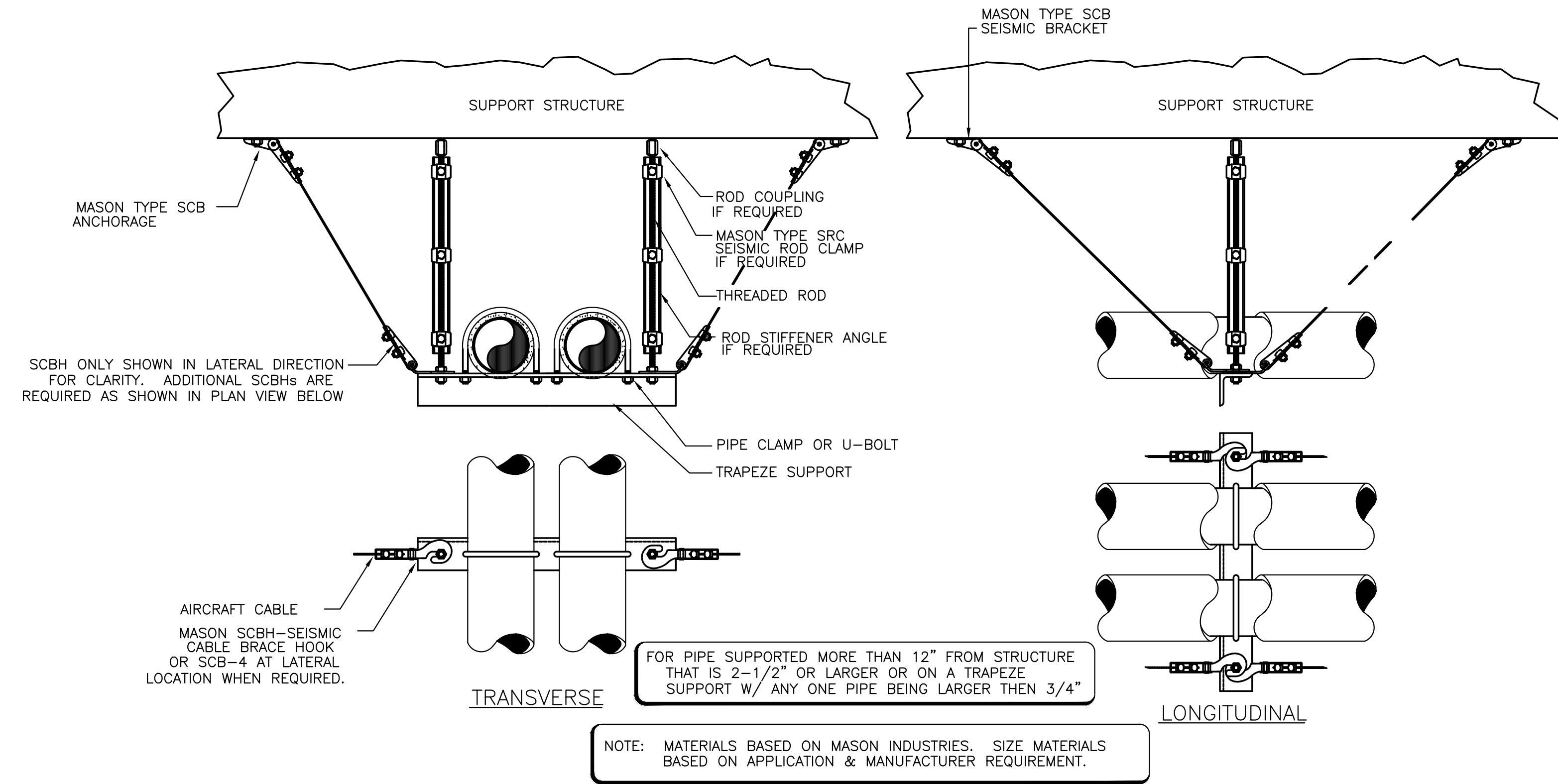
**9** CONCENTRIC GAS VENT & COMBUSTION AIR INTAKE  
SCALE: DETAIL



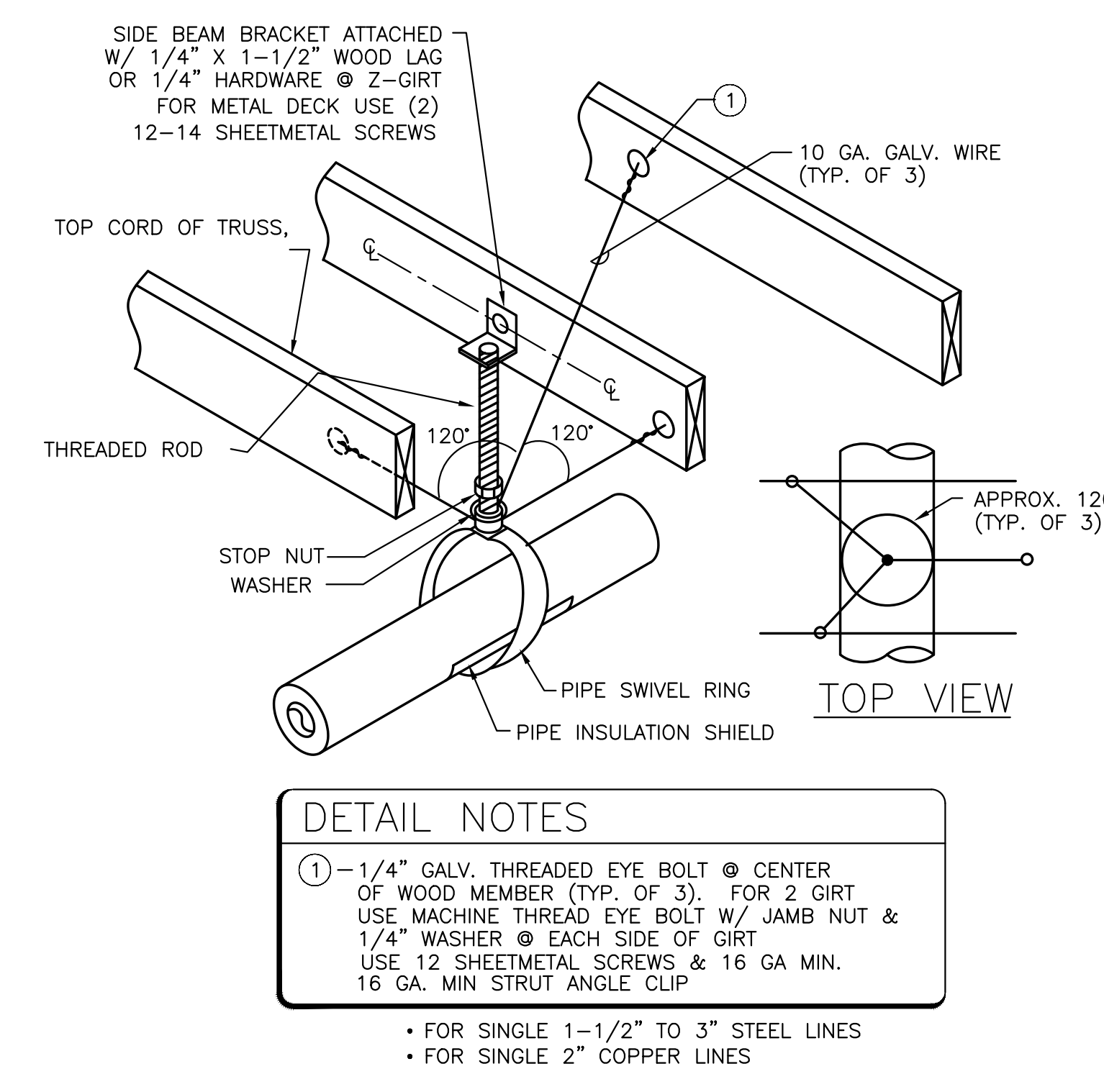
**10** PIPE/CONDUIT PENETRATION DRYWALL CONSTRUCTION  
SCALE: DETAIL







**1 SEISMIC PIPE SUPPORT**  
SCALE: DETAIL

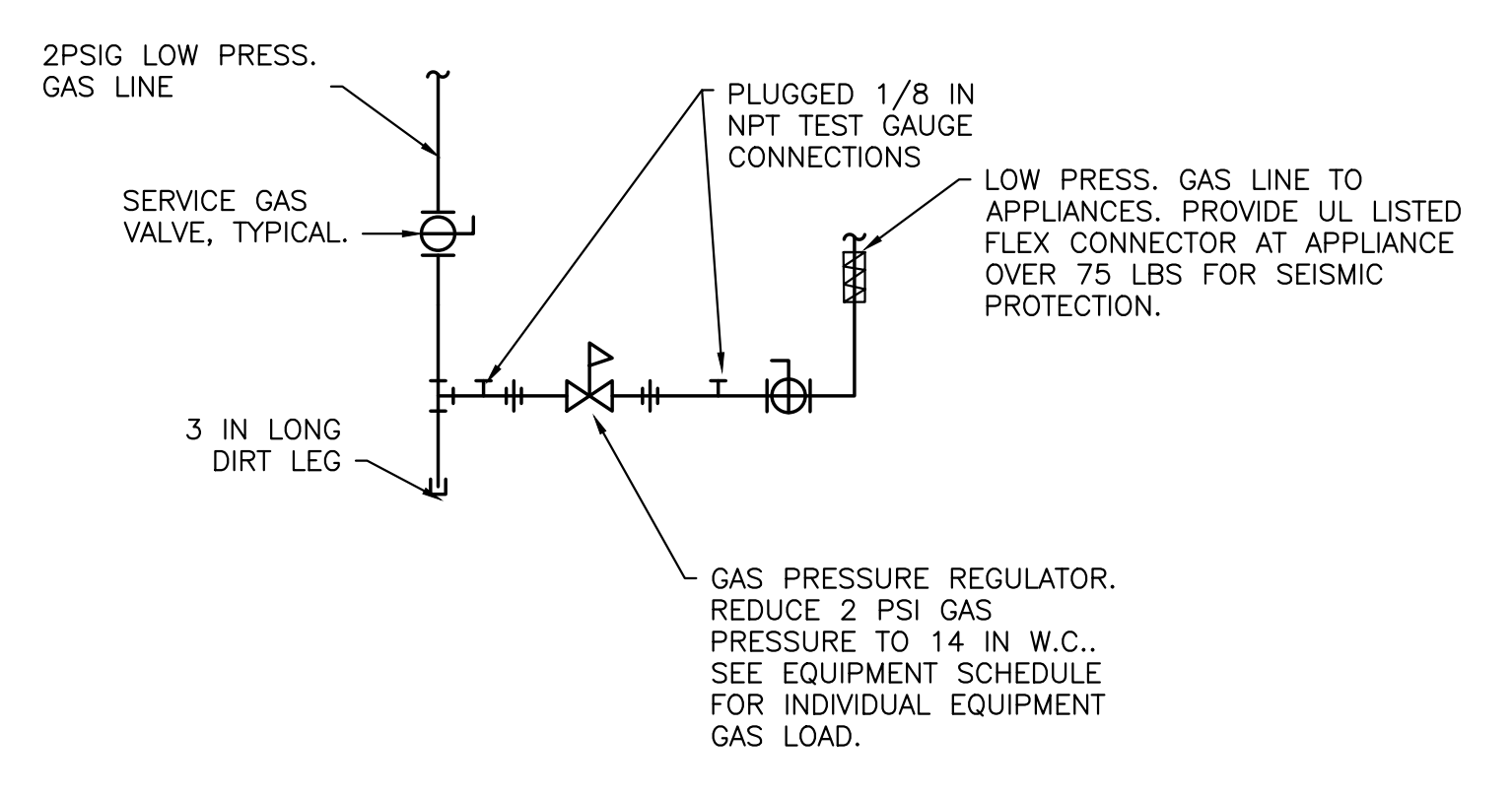


**DETAIL NOTES**

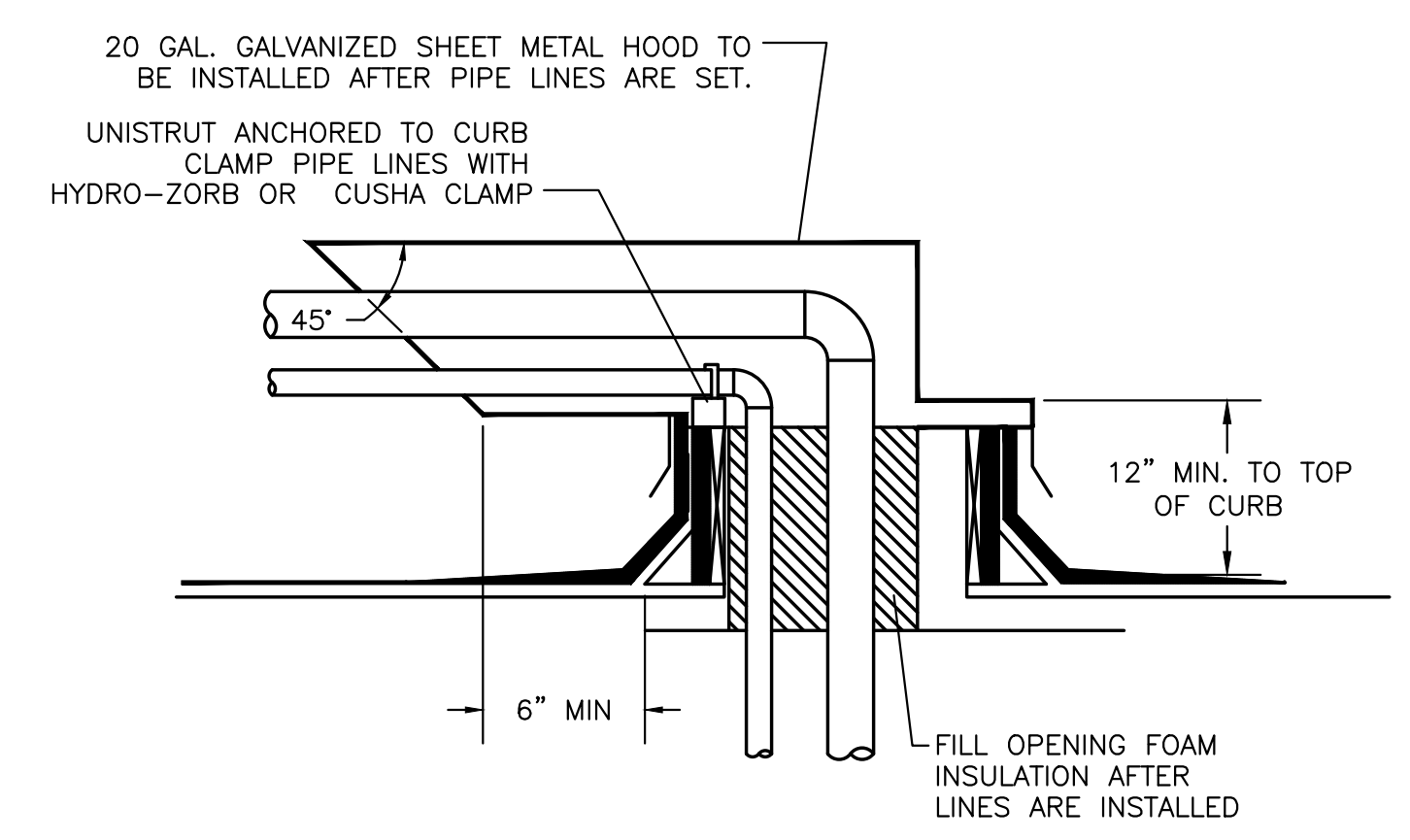
① - 1/4" GALV. THREADED EYE BOLT @ CENTER OF WOOD MEMBER (TYP. OF 3). FOR 2 GIRT USE MACHINE THREAD EYE BOLT W/ JAMB NUT & 1/4" WASHER @ EACH SIDE OF GIRT. USE 12 SHEETMETAL SCREWS & 16 GA MIN. 16 GA. MIN STRUT ANGLE CLIP

- FOR SINGLE 1-1/2" TO 3" STEEL LINES
- FOR SINGLE 2" COPPER LINES

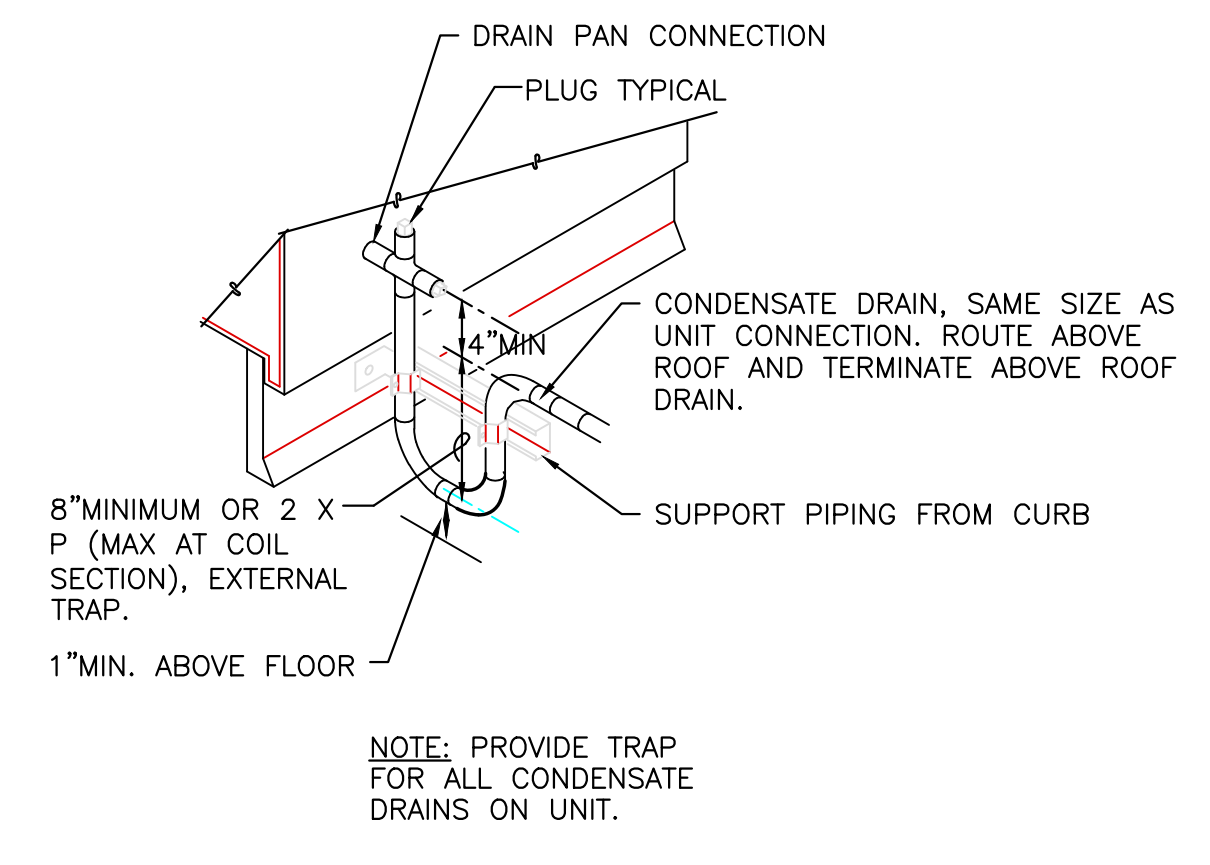
**2 PIPE SUPPORT**  
SCALE: DETAIL



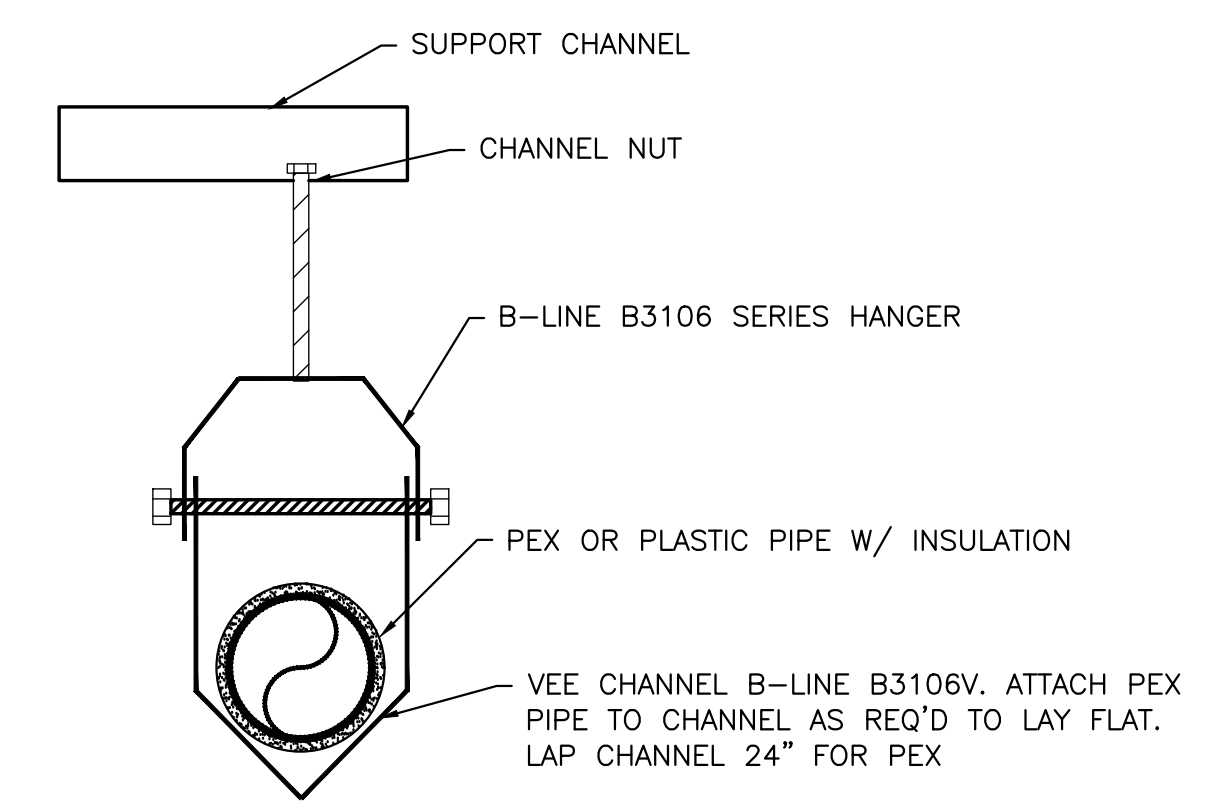
**3 GPRV PIPING DETAIL**  
NO SCALE



**4 PIPE HOOD DETAIL**  
SCALE: DETAIL



**5 COOLING COIL CONDENSATE DRAIN PIPING**  
SCALE: DETAIL



**6 PEX SUPPORT DETAIL**  
SCALE: DETAIL



ISSUE DATE: 12.19.18  
REVISIONS: