

ELECTRICAL SYMBOL LIST

LIGHTING SYMBOLS

	LIGHT FIXTURE, RECESSED
	LIGHT FIXTURE, RECESSED - EMERGENCY
	LIGHT FIXTURE, SURFACE MOUNT
	LIGHT FIXTURE, SURFACE MOUNT - EMERGENCY
	LIGHT FIXTURE, STRIP
	LIGHT FIXTURE, STRIP - EMERGENCY
	DOWNLIGHT FIXTURE, RECESSED
	DOWNLIGHT FIXTURE, RECESSED, WALLWASH
	DOWNLIGHT FIXTURE, RECESSED - EMERGENCY
	LIGHT FIXTURE, WALL MOUNT
	LIGHT FIXTURE, CEILING MOUNT
	RECESSED LIGHT FIXTURE, WALL MOUNT
	LIGHT FIXTURE, WALL MOUNT
	LIGHT FIXTURE, WALL SCONCE
	LIGHT FIXTURE, TRACK W/ HEADS AS SHOWN ON PLAN
	EXIT SIGN, UNIVERSAL MOUNT, W/ DIRECTIONAL ARROW
	EXIT SIGN, WALL MOUNT, +8'-0" A.F.F.
	EMERGENCY LIGHT W/ BATTERY PACK, +8'-0" A.F.F.
	FLOOD LIGHT
	AREA LUMINAIRE
	AREA LUMINAIRE W/STANDBY LAMP
	AREA LUMINAIRE, WALL MOUNT
	AREA LUMINAIRE, POLE MOUNT
	LIGHT FIXTURE, DAYLIGHT DIMMING (DIMMING ZONE 1)

SWITCH SYMBOLS

	ON/OFF SWITCH, SINGLE CHANNEL, nLIGHT +48" A.F.F.
	DIMMER SWITCH, SINGLE CHANNEL, nLIGHT +48" A.F.F.
	DIMMER SWITCH, TWO CHANNEL, nLIGHT +48" A.F.F.
	OCCUPANCY SENSOR, DIMMING, nLIGHT, WALL +48" A.F.F.
	OCCUPANCY SENSOR, DUAL-TECH, nLIGHT, CEILING
	PHOTO SENSOR, DIMMING (ZONE 1), nLIGHT, CEILING
	ELV DIMMING POWER PACK, nLIGHT
	OCCUPANCY SENSOR, DUAL-TECH, nLIGHT, CORNER
	SWITCH, SPST W/ PILOT LIGHT, +48" A.F.F.

POWER SYMBOLS

	RECEPTACLE, DUPLEX +18" A.F.F.
	RECEPTACLE, WEATHER-RESISTANT DUPLEX, WEATHER-PROOF COVER
	RECEPTACLE, TAMPERS-RESISTANT DUPLEX
	RECEPTACLE, QUAD +18" A.F.F.
	RECEPTACLE, DUPLEX, ABOVE COUNTER
	RECEPTACLE, DUPLEX, FLUSH FLOOR MOUNT
	RECEPTACLE, SPECIAL (COORDINATE WITH EQUIPMENT SERVED)
	SNOW MELT CABLE LENGTH AS INDICATED ON PLAN
	ELECTRIC VEHICLE CHARGING STATION
	MAGNETIC CONTACTOR
	RELAY
	TIME CLOCK CONTROL
	JUNCTION BOX
	THERMOSTAT
	TRANSFORMER
	DISCONNECT, NON-FUSED
	DISCONNECT, FUSED
	ELECTRICAL CONNECTION
	ELECTRICAL CONNECTION, SINGLE MOTOR
	ELECTRICAL CONNECTION, MULTI-MOTOR
	ELECTRICAL DISTRIBUTION PANEL, SURFACE
	MISCELLANEOUS PANEL, RECESSED
	FLUSH FLOOR BOX (W/ DEVICES AS SHOWN ON PLAN)
	ELECTRICAL DISTRIBUTION PANEL, RECESSED
	ELECTRICAL CONNECTION, FIRE/SMOKE DAMPER

WIRING SYMBOLS

	PANEL & CIRCUIT NUMBER
	HOMERUN TO PANEL
	CONDUCTOR SIZE (IF OTHER THAN #12)
	PHASE CONDUCTOR
	NEUTRAL CONDUCTOR
	GROUND CONDUCTOR
	CONCEALED CONDUIT
	CONDUIT SIZE
	CONDUIT (UNDER SLAB OR FLOOR)
	CONDUIT, STUBBED & CAPPED

ONE-LINE DIAGRAM SYMBOLS

	ELECTRICAL DISTRIBUTION PANELBOARD (MLO)
	ELECTRICAL DISTRIBUTION PANELBOARD (MCB)
	SUB-FEED CIRCUIT BREAKER
	CIRCUIT BREAKER (TRIP RATING & POLES AS INDICATED ON PLAN)
	ELECTRONIC TRIP CIRCUIT BREAKER
	MAIN SWITCH (RATING & POLES AS INDICATED ON PLAN)
	FUSE (RATING & CLASS AS INDICATED ON PLAN)
	TRANSFORMER (RATING AS INDICATED ON PLAN)
	FUSE (RATING & CLASS AS INDICATED ON PLAN)
	GROUND SYSTEM (SIZE AS INDICATED ON PLAN)
	WATER PIPE GROUND ELECTRODE
	TRANSIENT VOLTAGE SURGE SUPPRESSOR
	UTILITY METER & METER BASE
	UTILITY METER CURRENT TRANSFORMER
	FEEDER NO. (SEE FEEDER SCHEDULE)

NOTATIONS

	DRAWING NOTE
	DETAIL REFERENCE: TOP=DETAIL NO., BOTTOM=SHEET NO.
	MECHANICAL EQUIPMENT MARK NO. (SEE EQUIPMENT SCHEDULE)

ABBREVIATIONS

'A'	LIGHT FIXTURE TYPE (SEE FIXTURE LIST)
A.F.F.	ABOVE FINISHED FLOOR
A.F.G.	ABOVE FINAL GRADE
A.F.I.	ARC FAULT INTERRUPTER
A.T.S.	TRANSFER SWITCH, AUTOMATIC
C	CONDUIT
C.O.	CONDUIT ONLY
CATV	CABLE TELEVISION
CB	CIRCUIT BREAKER
CCTV	CLOSED CIRCUIT TELEVISION
C.T.	CURRENT TRANSFORMER
E	EMERGENCY
E.L.	EMERGENCY LIGHT
E.L.C.	EXTERIOR LIGHTING CONTROL
FACP	FIRE ALARM CONTROL PANEL
G.F.I.	GROUND FAULT INTERRUPTER
GFP	GROUND FAULT PROTECTION
GND	GROUND
H.I.D.	HIGH INTENSITY DISCHARGE
HP	HORSEPOWER
I.G.	ISOLATED GROUND
I.R	INFRARED
JB	JUNCTION BOX
LCP	LIGHTING CONTROL PANEL
MCB	MAIN CIRCUIT BREAKER
MLO	MAIN LUGS ONLY
M.T.S.	TRANSFER SWITCH, MANUAL
(N)	NEW
N.I.C.	NOT IN CONTRACT
OL	OVERLOAD
O.L.C.	OFFICE LIGHTING CONTROL
P	POLE
P.A.	PUBLIC ADDRESS
PC	PARTIAL CIRCUIT
PH	PHASE
PRI	PRIMARY
R.T.U.	REMOTE TELEMETRY UNIT
(R)	RELOCATED
SEC	SECONDARY
T.V.S.S.	
U.G.	UNDERGROUND
U.O.N.	UNLESS OTHERWISE NOTED
VFD	VARIABLE FREQUENCY DRIVE
W	WIRE
W.G.	WIRE GUARD
W.P.	WEATHERPROOF
W.T.	WATERTIGHT
X.P.	EXPLOSION PROOF

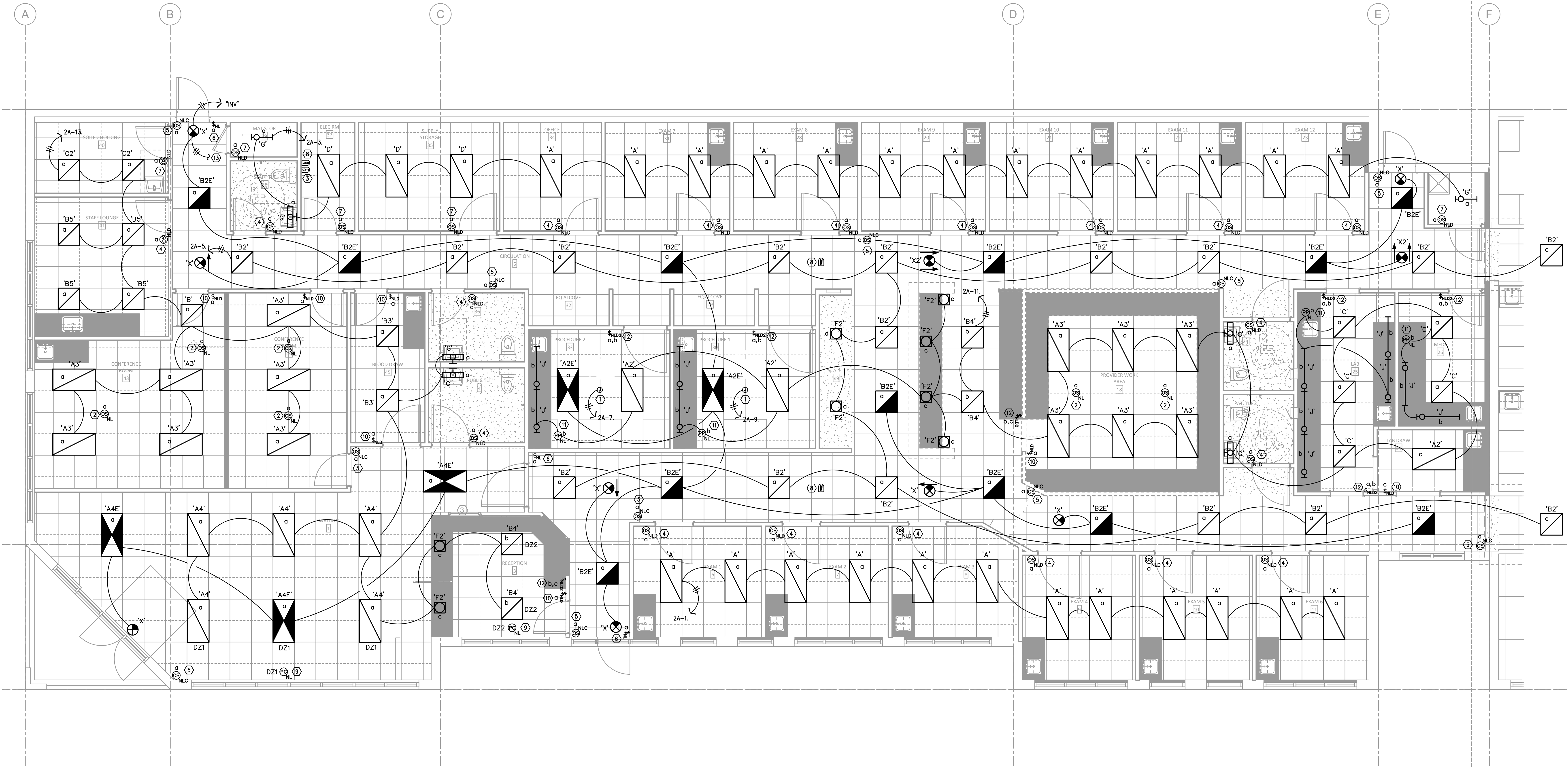
NOTE: SOME OF THE SYMBOLS AND ABBREVIATIONS ON THIS LIST MAY NOT APPLY TO THIS PROJECT.



South Hillsboro Crossing Clinic
 OHSU Tuality Health care
 7529 SE Tuatatin Valley Hwy., Hillsboro, Oregon 97123



ISSUE DATE: 12.19.18
 REVISIONS:



PLAN NOTES

- | | |
|---|---|
| <p>① CONNECTION FOR OWNER PROVIDED / CONTRACTOR INSTALLED PROCEDURE LIGHT. VERIFY ROUGH-IN AND CONTROLS REQUIREMENT WITH EQUIPMENT VENDOR.</p> <p>② DUAL-TECH CEILING OCCUPANCY SENSOR. nLIGHT "nRM-PDT-9" SERIES.</p> <p>③ LIGHTING GATEWAY AND SYSTEM CONTROLLER. nLIGHT "ECLYPSE" SERIES.</p> <p>④ DUAL-TECH WALL OCCUPANCY SENSOR WITH RAISE/LOWER AND ON/OFF. nLIGHT "nWSX-PDT-LV-DX" SERIES.</p> <p>⑤ DUAL-TECH CORNER OCCUPANCY SENSOR. nLIGHT "nWV-PDT-16-KIT" SERIES.</p> <p>⑥ SINGLE-CHANNEL ON/OFF CONTROL STATION. nLIGHT "nPODM" SERIES.</p> | <p>⑦ INFRA-RED WALL OCCUPANCY SENSOR WITH RAISE/LOWER AND ON/OFF. nLIGHT "nWSX-LV-DX" SERIES.</p> <p>⑧ 8-PORT LIGHTING CONTROL BRIDGE. nLIGHT "nBRGB-KIT" SERIES.</p> <p>⑨ DAYLIGHT HARVESTING PHOTOCELL. nLIGHT "nDM-ADCC-RJ45" SERIES.</p> <p>⑩ SINGLE-CHANNEL DIMMING CONTROL STATION. nLIGHT "nPODM-DX" SERIES.</p> <p>⑪ ELY DIMMING POWER PACK. nLIGHT "nSP5-PDD-ELY-120" SERIES.</p> <p>⑫ TWO-CHANNEL DIMMING CONTROL STATION. nLIGHT "nPODM-2P-DX" SERIES.</p> <p>⑬ TO EXHAUST FAN EF-2 ON ROOF.</p> |
|---|---|

1 FLOOR PLAN - LIGHTING
E2.00 SCALE: 1/4" = 1'-0"



South Hillsboro Crossing Clinic
OHSU Tuality Health care
7529 SE Tualatin Valley Hwy, Hillsboro, Oregon 97123



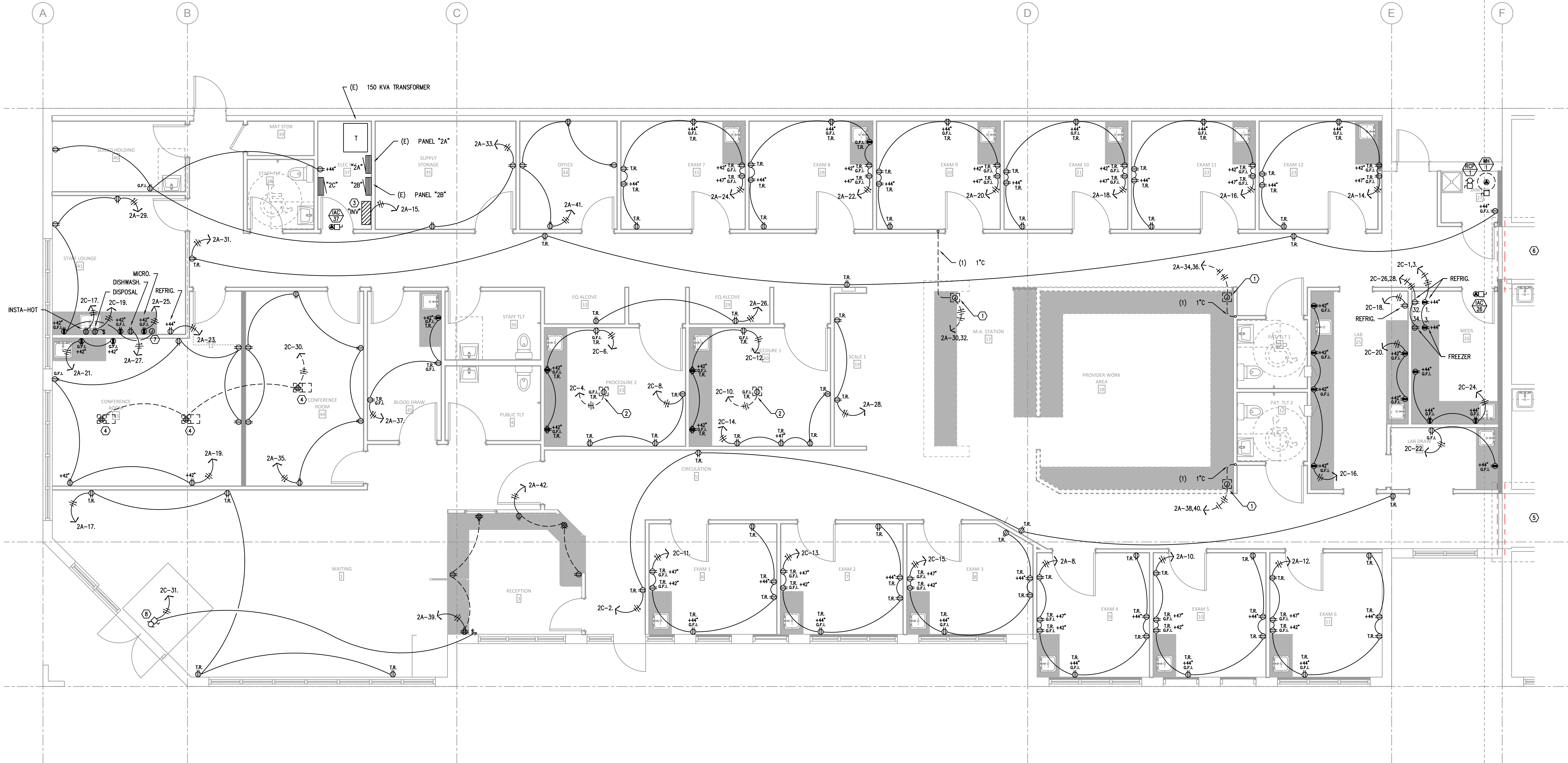
ISSUE DATE: 12.19.18
REVISIONS:

METIA
Consulting Engineers
2007 S.E. Ash St.
Portland, OR 97214
PHN: (503) 234-0548
FAX: (503) 234-0877
WWW.METIA-ENG.COM
CONTACT: CHRIS WINER

FLOOR PLAN - LIGHTING

E2.00

PERMIT SET



PLAN NOTES

- ① COMBO FURNITURE FLOOR BOX. PROVIDE WITH ALL NECESSARY HARDWARE, COMPARTMENT DIVIDERS, AND FINISH FLANGE FOR A COMPLETE INSTALLATION. PROVIDE COVERPLATES WITH 1" SCREW PLUG AND 2" SCREW PLUG. PROVIDE (1) 1" FC FROM LOW-VOLTAGE COMPARTMENT STUBBED INTO ACCESSIBLE CEILING SPACE AS INDICATED. VERIFY COVERPLATE FINISH WITH ARCHITECT. COORDINATE EXACT LOCATION WITH FURNITURE VENDOR AND ARCHITECT PRIOR TO ROUGH-IN. LEGRAND "EFBF-06" SERIES.
- ② SINGLE-GANG FLOOR BOX. PROVIDE WITH ALL NECESSARY HARDWARE, DEVICE PLATES, COVER PLATE, AND FINISH FLANGE FOR A COMPLETE INSTALLATION. LEGRAND "880CM1-1" SERIES.
- ③ 1.5 KVA EMERGENCY LIGHTING INVERTER. 120V INPUT / 120V OUTPUT. MYERS "M-1500-A" SERIES.
- ④ FOUR-GANG FLOOR BOX. PROVIDE WITH ALL NECESSARY HARDWARE, DIVIDERS, DEVICE PLATES, COVER PLATE, AND FINISH FLANGE FOR A COMPLETE INSTALLATION. LEGRAND "EFB455-06" SERIES.
- ⑤ DEMO ALL ELECTRICAL IN EXISTING TOILET ROOM FOR EXTENSION OF HALLWAY.
- ⑥ DEMO ALL ELECTRICAL IN EXISTING STORAGE ROOM FOR EXTENSION OF HALLWAY.
- ⑦ ELECTRONIC TRAP PRIMER CONNECTION. VERIFY LOCATION WITH PLUMBING CONTRACTOR.
- ⑧ POWERED DOOR CONNECTION. ROUTE POWER CIRCUIT VIA PILOT SWITCH AT RECEPTION COUNTER. COORDINATE CONTROL REQUIREMENTS WITH VENDOR.

1 FLOOR PLAN - POWER
 E3.00 SCALE: 1/4" = 1'-0"

South Hillsboro Crossing Clinic
 OHSU Tuality Health care
 7529 SE Tualatin Valley Hwy, Hillsboro, Oregon 97123



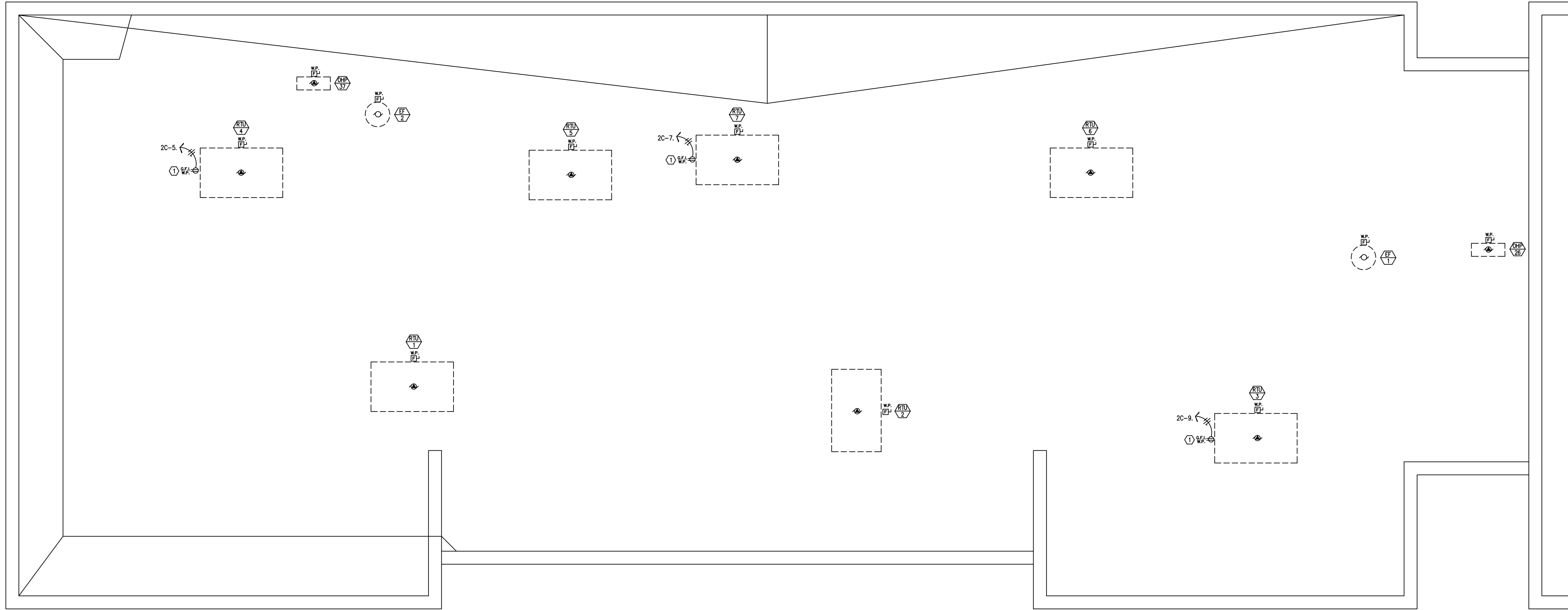
ISSUE DATE: 12.19.18
 REVISIONS:

M Consulting Engineers
 2007 S.E. Ash St.
 Portland, OR 97214
 PHN: (503) 234-0548
 FAX: (503) 234-0677
 WWW.METIA-ENG.COM
 CONTACT: CHRIS WINER

FLOOR PLAN - POWER

E3.00

PERMIT SET



1 ROOF PLAN - ELECTRICAL
 E4.00 SCALE: 1/4" = 1'-0"

PLAN NOTES

- ① LOCATE MAINTENANCE RECEPTACLE ON ROOFTOP EQUIPMENT ENCLOSURE.



South Hillsboro Crossing Clinic
 OHSU Tuality Health care
 7529 SE Tualatin Valley Hwy, Hillsboro, Oregon 97123

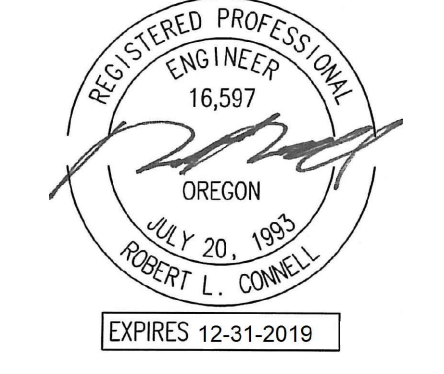


ISSUE DATE: 12.19.18
 REVISIONS:

ROOF PLAN - ELECTRICAL

E4.00

PERMIT SET



LIGHTING FIXTURE LIST					
TYPE	LAMP	MANUFACTURER	CATALOG NUMBER	DESCRIPTION	OPTIONS
'A'	LED (72W)	LITHONIA	2BLT4 SERIES	TYPE MOUNTING :2' X 4' LED TROFFER HOUSING :RECESSED LENS/REFL :STEEL VOLTAGE :MULTI-VOLT BALLAST :LED DRIVER	PROVIDE WITH: 7200 LUMEN OPTION LP840 COLOR TEMPERATURE OPTION N80 CONTROLS
'A2'	LED (72W)	LITHONIA	2BLT4 SERIES	TYPE MOUNTING :2' X 4' LED TROFFER HOUSING :RECESSED LENS/REFL :STEEL VOLTAGE :MULTI-VOLT BALLAST :LED DRIVER	PROVIDE WITH: 7200 LUMEN OPTION LP840 COLOR TEMPERATURE OPTION N80 CONTROLS
'A2E'	LED (72W)	LITHONIA	2BLT4 SERIES	TYPE MOUNTING :2' X 4' LED TROFFER HOUSING :RECESSED LENS/REFL :STEEL VOLTAGE :MULTI-VOLT BALLAST :LED DRIVER	PROVIDE WITH: 7200 LUMEN OPTION LP840 COLOR TEMPERATURE OPTION N80CONTROLS
'A3'	LED (47W)	LITHONIA	2BLT4 SERIES	TYPE MOUNTING :2' X 4' LED TROFFER HOUSING :RECESSED LENS/REFL :STEEL VOLTAGE :MULTI-VOLT BALLAST :LED DRIVER	PROVIDE WITH: 4800 LUMEN OPTION LP840 COLOR TEMPERATURE OPTION N80 CONTROLS
'A4'	LED (39W)	LITHONIA	2BLT4 SERIES	TYPE MOUNTING :2' X 4' LED TROFFER HOUSING :RECESSED LENS/REFL :STEEL VOLTAGE :MULTI-VOLT BALLAST :LED DRIVER	PROVIDE WITH: 4000 LUMEN OPTION LP840 COLOR TEMPERATURE OPTION N80 CONTROLS
'A4E'	LED (39W)	LITHONIA	2BLT4 SERIES	TYPE MOUNTING :2' X 4' LED TROFFER HOUSING :RECESSED LENS/REFL :STEEL VOLTAGE :MULTI-VOLT BALLAST :LED DRIVER	PROVIDE WITH: 4000 LUMEN OPTION LP840 COLOR TEMPERATURE OPTION N80CONTROLS
'B'	LED (20W)	LITHONIA	2BLT2 SERIES	TYPE MOUNTING :2' X 2' LED TROFFER HOUSING :RECESSED LENS/REFL :STEEL VOLTAGE :MULTI-VOLT BALLAST :LED DRIVER	PROVIDE WITH: 2000 LUMEN OPTION LP840 COLOR TEMPERATURE OPTION N80 CONTROLS
'B2'	LED (36W)	LITHONIA	2BLT2 SERIES	TYPE MOUNTING :2' X 2' LED TROFFER HOUSING :RECESSED LENS/REFL :STEEL VOLTAGE :MULTI-VOLT BALLAST :LED DRIVER	PROVIDE WITH: 3300 LUMEN OPTION LP840 COLOR TEMPERATURE OPTION N80 CONTROLS
'B2E'	LED (36W)	LITHONIA	2BLT2 SERIES	TYPE MOUNTING :2' X 2' LED TROFFER HOUSING :RECESSED LENS/REFL :STEEL VOLTAGE :MULTI-VOLT BALLAST :LED DRIVER	PROVIDE WITH: 3300 LUMEN OPTION LP840 COLOR TEMPERATURE OPTION N80CONTROLS
'B3'	LED (40W)	LITHONIA	2BLT2 SERIES	TYPE MOUNTING :2' X 2' LED TROFFER HOUSING :RECESSED LENS/REFL :STEEL VOLTAGE :MULTI-VOLT BALLAST :LED DRIVER	PROVIDE WITH: 4000 LUMEN OPTION LP840 COLOR TEMPERATURE OPTION N80 CONTROLS
'B4'	LED (36W)	LITHONIA	2BLT2 SERIES	TYPE MOUNTING :2' X 2' LED TROFFER HOUSING :RECESSED LENS/REFL :STEEL VOLTAGE :MULTI-VOLT BALLAST :LED DRIVER	PROVIDE WITH: 3300 LUMEN OPTION LP840 COLOR TEMPERATURE OPTION N80 CONTROLS
'B5'	LED (36W)	LITHONIA	2BLT2 SERIES	TYPE MOUNTING :2' X 2' LED TROFFER HOUSING :RECESSED LENS/REFL :STEEL VOLTAGE :MULTI-VOLT BALLAST :LED DRIVER	PROVIDE WITH: 3300 LUMEN OPTION LP840 COLOR TEMPERATURE OPTION N80 CONTROLS
'C'	LED (35W)	LITHONIA	2TL2 SERIES	TYPE MOUNTING :2' X 2' LED TROFFER HOUSING :RECESSED LENS/REFL :STEEL VOLTAGE :MULTI-VOLT BALLAST :LED DRIVER	PROVIDE WITH: 4000 LUMEN OPTION LP840 COLOR TEMPERATURE OPTION N80 CONTROLS
'C2'	LED (29W)	LITHONIA	2TL2 SERIES	TYPE MOUNTING :2' X 2' LED TROFFER HOUSING :RECESSED LENS/REFL :STEEL VOLTAGE :MULTI-VOLT BALLAST :LED DRIVER	PROVIDE WITH: 3300 LUMEN OPTION LP840 COLOR TEMPERATURE OPTION N80 CONTROLS
'D'	LED (39W)	LITHONIA	2TL4 SERIES	TYPE MOUNTING :2' X 4' LED TROFFER HOUSING :RECESSED LENS/REFL :STEEL VOLTAGE :MULTI-VOLT BALLAST :LED DRIVER	PROVIDE WITH: 4000 LUMEN OPTION LP840 COLOR TEMPERATURE OPTION N80 CONTROLS
'E2'	LED (12W)	INDY	LRTB SERIES	TYPE :8" LED DOWNLIGHT HOUSING :RECESSED LENS/REFL :STEEL VOLTAGE :MULTI-VOLT BALLAST :LED DRIVER	PROVIDE WITH: 1300 LUMEN OPTION 4000K COLOR TEMPERATURE OPTION HYPERBOLIC WIDE DISTRIBUTION NIGHT CONTROLS
'G'	LED (18W)	LITHONIA	VL2 SERIES	TYPE :2' LED BAR LIGHT MOUNTING :SURFACE HOUSING :STEEL LENS/REFL :ACRYLIC VOLTAGE :MULTI-VOLT BALLAST :LED DRIVER	PROVIDE WITH: 1800 LUMEN OPTION 4000K COLOR TEMPERATURE OPTION N80 CONTROLS
'J'	LED (14W)	PHILIPS	EW PROFILE POWERCORE SERIES	TYPE :4' LED UNDERCABINET LIGHT MOUNTING :SURFACE HOUSING :STEEL LENS/REFL :MATE, ACRYLIC VOLTAGE :120V BALLAST :LED DRIVER	PROVIDE WITH: END CONNECTORS HARMONIC COMPARTMENT 4000K COLOR TEMPERATURE
'X'	LED (5W)	LITHONIA	LQM SERIES	TYPE :EXIT SIGN MOUNTING :UNIVERSAL HOUSING :THERMOPLASTIC LENS/REFL :GREEN STENCIL LETTERING VOLTAGE :MULTI-VOLT BALLAST :LED DRIVER	SINGLE FACE
'X2'	LED (5W)	LITHONIA	LQM SERIES	TYPE :EXIT SIGN MOUNTING :UNIVERSAL HOUSING :THERMOPLASTIC LENS/REFL :GREEN STENCIL LETTERING VOLTAGE :MULTI-VOLT BALLAST :LED DRIVER	DOUBLE FACE

INSTALL CIRCUIT BREAKERS IN EXISTING PANEL SPACE

INSTALL CIRCUIT BREAKERS IN EXISTING PANEL SPACE

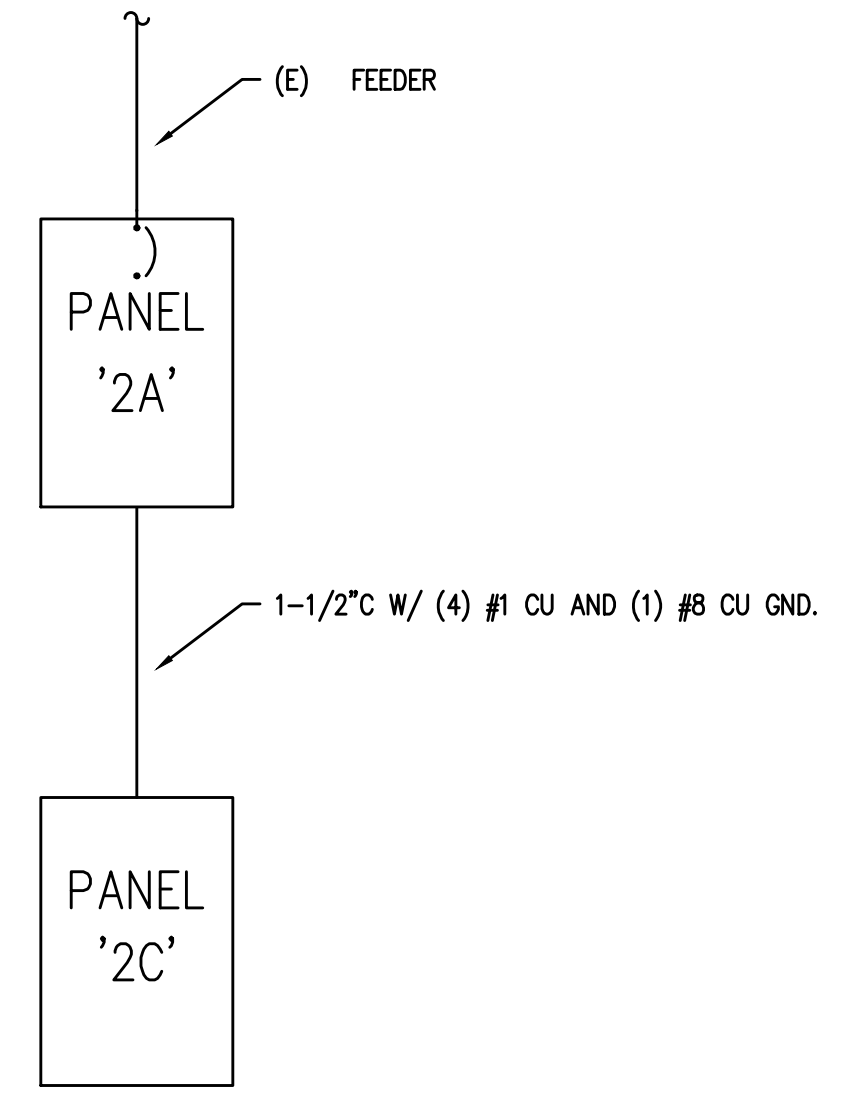
MFIA PANEL SCHEDULE											
panel	mounting	SURFACE			location			ELEC. RM.			connected load amps
		phase	bus & main	200A MCB	calculated load amps						
2A	120/208V	3	200A MCB	152							
C	service	va	a/p	no.	a b c	no.	a/p	va	service	C	
1	LIGHTS - EXAM	864	20/1	1	*	2	90/3	7374	PANEL "2C"	7	
1	LIGHTS - EXAM / OFFICE	1107	20/1	3	*	4	*	7374		7	
1	LIGHTS - HALLWAY	528	20/1	5	*	8	*	7374		7	
1	PROCEDURE LIGHT	500	20/1	7	*	8	20/1	1080	RECEPT - EXAM	2	
1	PROCEDURE LIGHT	500	20/1	9	*	10	20/1	1080	RECEPT - EXAM	2	
1	LIGHTS - PROVIDER / LAB	982	20/1	11	*	12	20/1	1080	RECEPT - EXAM	2	
1	LIGHTS - CONF. / WAITING	793	20/1	13	*	14	20/1	1080	RECEPT - EXAM	2	
5	INVERTER "INV"	1500	20/1	15	*	16	20/1	1080	RECEPT - EXAM	2	
2	RECEPT - WAITING	720	20/1	17	*	18	20/1	1080	RECEPT - EXAM	2	
2	RECEPT - CONFERENCE	360	20/1	19	*	20	20/1	1080	RECEPT - EXAM	2	
2	RECEPT - CONFERENCE	360	20/1	21	*	22	20/1	1080	RECEPT - EXAM	2	
6	REFRIGERATOR	750	20/1	23	*	24	20/1	1080	RECEPT - EXAM	2	
5	MICROWAVE	1500	20/1	25	*	26	20/1	360	RECEPT - ALCOOVE	2	
5	DISHWASHER	750	20/1	27	*	28	20/1	360	RECEPT - SCALE	2	
2	RECEPT - LOUNGE	720	20/1	29	*	30	20/1	900	PARTITION FURNITURE	2	
2	RECEPT - HALLWAY	720	20/1	31	*	32	20/1	900	PARTITION FURNITURE	2	
2	RECEPT - SOILED / STORAGE	900	20/1	33	*	34	20/1	900	PARTITION FURNITURE	2	
2	RECEPT - CONFERENCE	540	20/1	35	*	36	20/1	900	PARTITION FURNITURE	2	
2	RECEPT - BLOOD DRAW	540	20/1	37	*	38	20/1	900	PARTITION FURNITURE	2	
2	RECEPT - RECEPTION	540	20/1	39	*	40	20/1	900	PARTITION FURNITURE	2	
2	RECEPT - OFFICE	720	20/1	41	*	42	20/1	900	RECEPT - RECEPTION	2	
Phase A 18051 VA Phase B 18431 VA Phase C 18274 VA Total Connected 54756 VA											line-line voltage 208 largest motor (va) 0
load code: ph. A ph. B ph. C total factor											calculated load (va) 0
1. LIGHTS=	2157	1607	1510	VA	5274	1.25				8593	
2. RECEPT =	7020	7200	8640	VA	22860	1 + 0.5				16430	
3. HEATING=	0	0	0	VA	0	1.00				0	
4. KITCHEN=	0	0	0	VA	0	1.00				0	
5. EQUIP. =	1500	1500	0	VA	3000	1.00				3000	
6. MOTORS=	0	750	750	VA	1500	*				1500	
7. MISC=	7374	7374	7374	VA	22122	1.00				22122	
(* 125% of the largest motor + 100% of the balance)											TOTAL = 49645

INSTALL CIRCUIT BREAKERS IN EXISTING PANEL SPACE

MFIA PANEL SCHEDULE											
panel	mounting	SURFACE			location			ELEC. RM.			connected load amps
		phase	bus & main	200A MCB	calculated load amps						
2B	120/208V	3	200A MCB	192							
C	service	va	a/p	no.	a b c	no.	a/p	va	service	C	
6	RTU-1	3477	45/3	1	*	2	20/1	500	EXISTING CIRCUIT	5	
6	"	3477	"	3	*	4	20/1	500	EXISTING CIRCUIT	5	
6	"	3477	"	5	*	6	20/1	500	EXISTING CIRCUIT	5	
6	RTU-2	3175	40/3	7	*	8			SPACE		
6	"	3175	"	9	*	10			SPACE		
6	"	3175	"	11	*	12			SPACE		
6	RTU-3	3175	40/3	13	*	14			SPACE		
6	"	3175	"	15	*	16			SPACE		
6	"	3175	"	17	*	18			SPACE		
6	RTU-4	3477	45/3	19	*	20			SPACE		
6	"	3477	"	21	*	22			SPACE		
6	"	3477	"	23	*	24			SPACE		
6	RTU-5	2516	30/3	25	*	26			SPACE		
6	"	2516	"	27	*	28			SPACE		
6	"	2516	"	29	*	30			SPACE		
6	RTU-6	3175	40/3	31	*	32			SPACE		
6	"	3175	"	33	*	34			SPACE		
6	"	3175	"	35	*	36			SPACE		
6	RTU-7	3477	45/3	37	*	38			SPACE		
6	"	3477	"	39	*	40			SPACE		
6	"	3477	"	41	*	42			SPACE		
Phase A 22972 VA Phase B 22972 VA Phase C 22972 VA Total Connected 68916 VA											line-line voltage 208 largest motor (va) 5832
load code: ph. A ph. B ph. C total factor											calculated load (va) 0
1. LIGHTS=	0	0	0	VA	0	1.25				0	
2. RECEPT =	0	0	0	VA	0	1 + 0.5				0	
3. HEATING=	0	0	0	VA	0	1.00				0	
4. KITCHEN=	0	0	0	VA	0	1.00				0	
5. EQUIP. =	500	500	500	VA	1500	1.00				1500	
6. MOTORS=	22472	22472	22472	VA	67416	*				68874	
7. MISC=	0	0	0	VA	0	1.00				0	
(* 125% of the largest motor + 100% of the balance)											TOTAL = 70374

INSTALL CIRCUIT BREAKERS IN EXISTING PANEL SPACE

1 PARTIAL ONE-LINE DIAGRAM
E5.00 NTS



MFIA PANEL SCHEDULE											
panel	mounting	SURFACE			location			ELEC. RM.			connected load amps
		phase	bus & main	100A MLO	calculated load amps						
2C	120/208V	3	100A MLO	64							
C	service	va	a/p	no.	a b c	no.	a/p	va	service	C	
6	REFRIGERATOR	750	20/1	1	*	2	20/1	720	RECEPT - HALLWAY	2	
6	FREEZER	750	20/1	3	*	4	20/1	180	RECEPT - PROCEDURE	2	
2	RECEPT - ROOF	180	20/1	5	*	6	20/1	540	RECEPT - PROCEDURE	2	
2	RECEPT - ROOF	180	20/1	7	*	8	20/1	540	RECEPT - PROCEDURE	2	
2	RECEPT - ROOF	180	20/1	9	*	10	20/1	540	RECEPT - PROCEDURE	2	
2	RECEPT - EXAM	1080	20/1	11	*	12	20/1	540	RECEPT - PROCEDURE	2	
2	RECEPT - EXAM	1080	20/1	13	*	14	20/1	540	RECEPT - PROCEDURE	2	
2	RECEPT - EXAM	1080	20/1	15	*	16	20/1	540	RECEPT - LAB	2	
3	INSTA-HOT	1500	20/1	17	*	18	20/1	750	REFRIGERATOR	6	
6	GARBAGE DISPOSAL	1000	20/1	19	*	20	20/1	540	RECEPT - LAB	2	
6	OHP-26 / IAC-26	823	15/2	21	*	22	20/1	360	RECEPT - LAB DRAW	2	
6	"	823	"	23	*	24	20/1	540	RECEPT - MEDS	2	
6	OHP-37 / IAC-37	1372	20/2	25	*	26	20/1	750	REFRIGERATOR	6	
6	"	1372	"	27	*	28	20/1	750	REFRIGERATOR	6	
6	EF-1	665	20/1	29	*	30	20/1	1080	RECEPT - FLOORBOX	2	
6	POWERED DOOR	1000	20/1	31	*	32			SPACE		
5	WH-1	720	15/1	33	*	34			SPACE		
6	RCP-1	58	15/1	35	*	36			SPACE		
	SPACE			37	*	38			SPACE		
	SPACE			39	*	40			SPACE		
	SPACE			41	*	42			SPACE		
Phase A 8472 VA Phase B 6935 VA Phase C 7796 VA Total Connected 23163 VA											line-line voltage 208 largest motor (va) 0
load code: ph. A ph. B ph. C total factor											calculated load (va) 0
1. LIGHTS=	0	0	0	VA	0	1.25				0	
2. RECEPT =	3600	2520	3960	VA	10080	1 + 0.5				10040	
3. HEATING=	0	0	1								