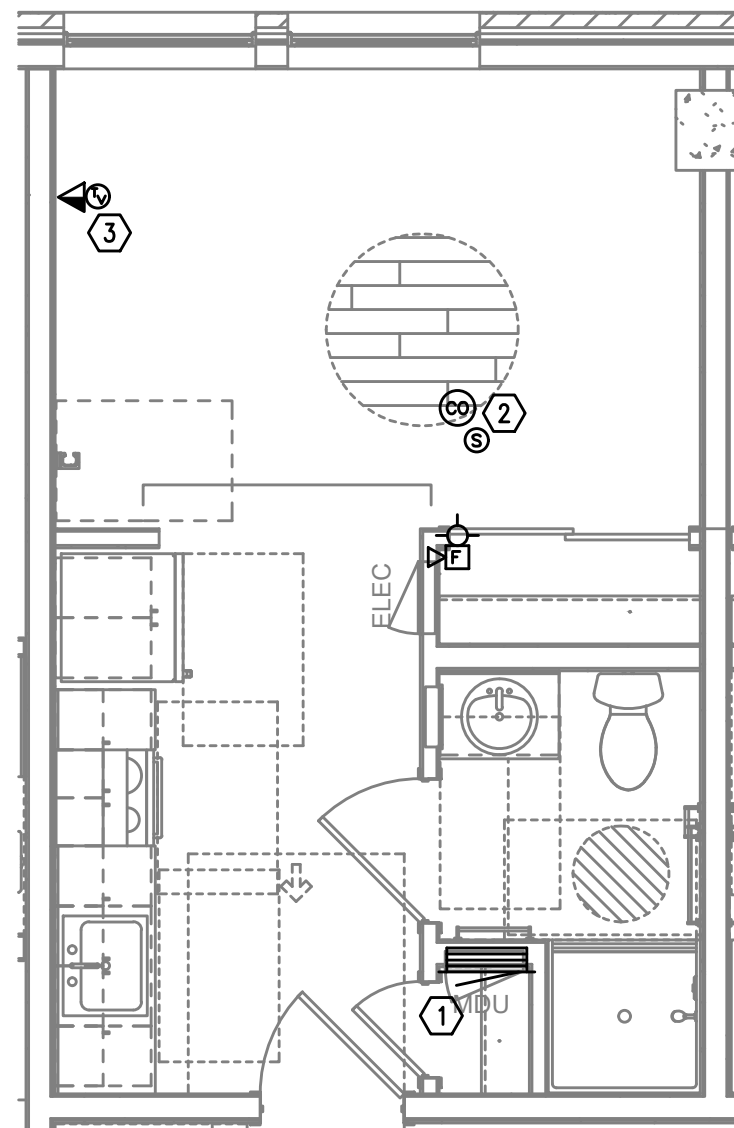
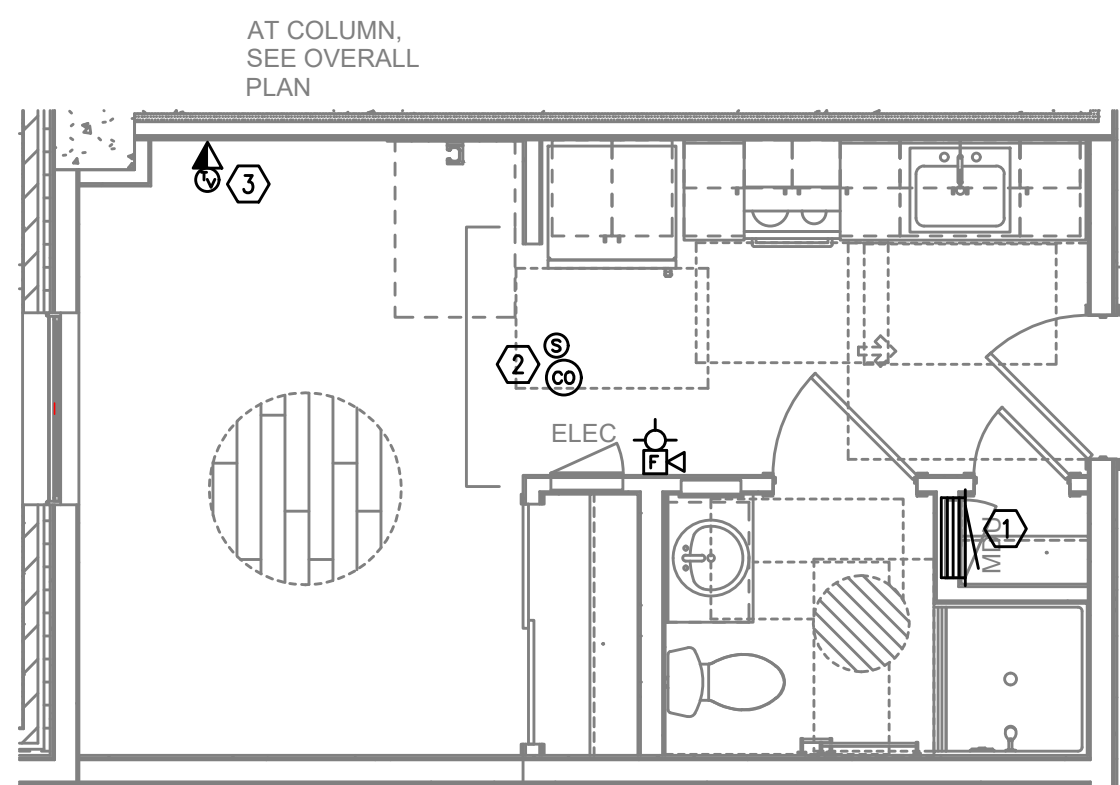


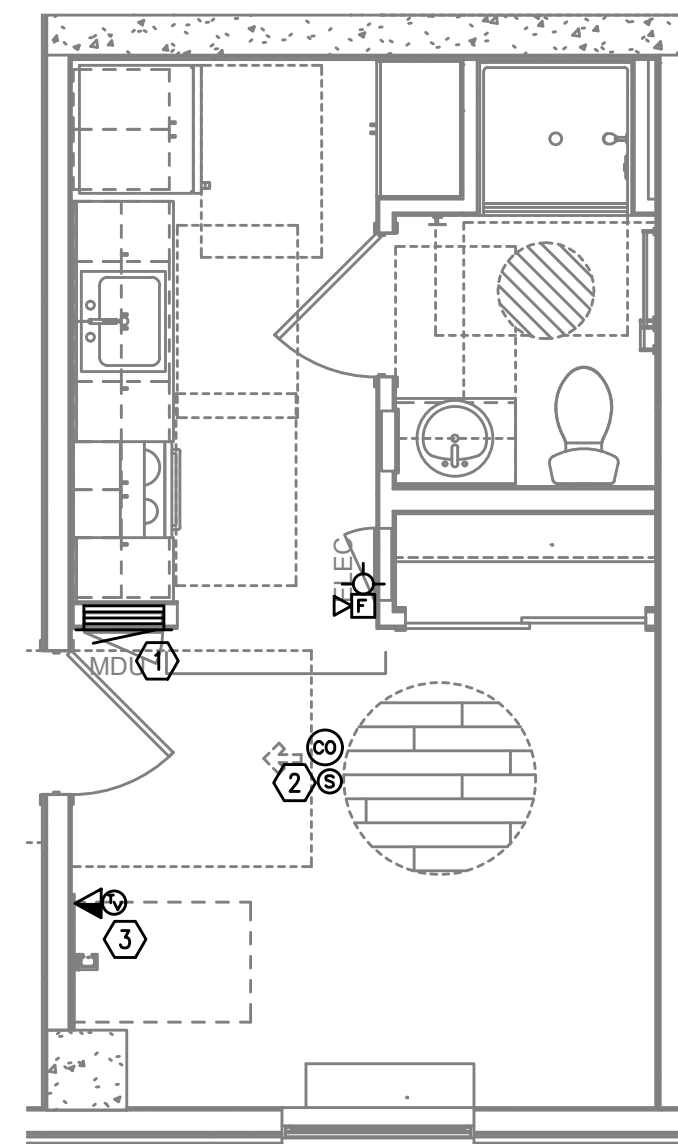
UNIT TYPE 1-STUDIO  
T4.01 TYPICAL TELCOM PLAN  
SCALE: 1/4" = 1'-0"



UNIT TYPE 2-STUDIO  
T4.01 TYPICAL TELCOM PLAN  
SCALE: 1/4" = 1'-0"



UNIT TYPE 3C-STUDIO  
T4.01 TYPICAL TELCOM PLAN  
SCALE: 1/4" = 1'-0"



UNIT TYPE 4-STUDIO  
T4.01 TYPICAL TELCOM PLAN  
SCALE: 1/4" = 1'-0"

#### GENERAL NOTES:

- DRAWINGS ARE DIAGRAMMATICAL AND MAY NOT ACCURATELY REFLECT ACTUAL CONSTRUCTION CONDITIONS. THE CONTRACTOR SHALL BE RESPONSIBLE FOR COORDINATING THE INSTALLATION OF ALL EQUIPMENT THEY ARE INSTALLING, WITH ALL TRADES PRIOR TO AND DURING CONSTRUCTION.
- FOR VOICE/DATA OUTLETS PROVIDE A SINGLE GANG MUD-RING WITH A 1" CONDUIT FROM THE TOP OF THE MUD-RING TO ACCESSIBLE CEILING SPACE. TERMINATE CONDUIT WITH END CONNECTORS AND THREAD ON PLASTIC BUSHING FOR CABLE PROTECTION. OUTLET SHALL BE AT THE SAME HEIGHT AS ADJACENT POWER OUTLET AND LESS THAN 18" SEPARATION. COORDINATE WITH ELECTRICAL.
- COORDINATE ALL DEVICE LOCATIONS WITH LATEST ARCHITECTURAL INTERIOR ELEVATIONS TO VERIFY DEVICES WILL NOT BE OBSTRUCTED.
- PROVIDE PULL STRING IN ALL CONDUITS FOR LATER USE.
- ALL PENETRATIONS THROUGH FIREWALLS WILL NEED FIRESTOP OF THE APPROPRIATE RATING.

#### KEYED NOTES:

- SMART PANEL FOR UTILITY DEMARCATION WITHIN UNIT. PROVIDE RF TRANSPARENT PANEL.
- SMOKE AND CO DETECTOR CAN BE A SINGLE UNIT.
- (1) COAXIAL AND (2) CATEGORY CABLES AND OUTLETS PER FACEPLATE.

FIRE ALARM AND DETECTION SYSTEM SHOWN ON PLAN(S) ARE FOR DESIGN INTENT ONLY. THIS IS A DEFERRED SUBMITTAL SYSTEM REQUIRING THE CONTRACTOR TO COMPLETE THE PERMIT READY DESIGN AND CALCULATIONS AS REQUIRED PER THE AUTHORITY HAVING JURISDICTION. VERIFY BUILDING OCCUPANCY TYPE AND OCCUPANT LOAD WITH ARCHITECTURAL PLANS.

NOTE: DRAWINGS ARE AT HALF SCALE WHEN PRINTED AT 11X17  
COPYRIGHT: CARLETON HART ARCHITECTURE DO NOT REPRODUCE WITHOUT PERMISSION

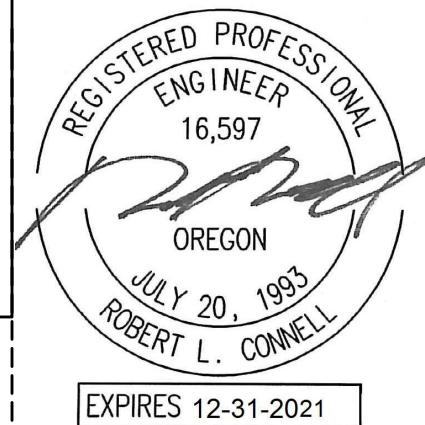
SUSAN EMMONS - NORTH BLDG  
624 NW 18TH AVENUE  
PORTLAND, OR  
NORTHWEST HOUSING ALTERNATIVES  
PERMIT SET

TYPICAL ENLARGED  
UNIT PLANS

PROJECT NO.  
17004  
10/02/2020

REVISIONS: A

T4.01



MEDIA Consulting Engineers  
2007 S.E. Ash St.  
Portland, OR 97214  
PHN: (503) 234-0548  
FAX: (503) 234-0677  
INC. WWW.MFIA-ENG.COM  
CONTACT: GARY ADOVNIK

CARLETON HART ARCHITECTURE P.C.  
830 SW 10th Avenue #200 Portland, OR 97205  
503 243 2252  
www.carletonhart.com