



# TELCOM SYMBOL LIST

## SIGNAL SYMBOLS

	TELEPHONE OUTLET +18" A.F.F.
	WALL TELEPHONE OUTLET +48" A.F.F.
	CABLE FOR WIRELESS ACCESS POINT
	(2) PORTS PER OUTLET +18" A.F.F., U.O.N.
	'C' INDICATES OUTLET ABOVE COUNTER
	'X' INDICATES CABLE/PORT COUNT IN FP
	OUTLET IN FLOOR BOX (2) PORTS U.O.N.
	OUTLET INSTALLED IN POKE-THROUGH
	CATV OUTLET +18" A.F.F., U.O.N.
	JUNCTION BOX
	AUDIO/VISUAL OUTLET +18" A.F.F., U.O.N.
	CLOCK
	FLOOR STANDING DATA RACK
	DOUBLE SIDED VERTICAL CABLE MANAGER
	LADDER RACK/ CABLE TRAY

## WIRING SYMBOLS

	CONDUIT SIZE
	CONDUIT (UNDER SLAB OR FLOOR)
	FLEXIBLE CONNECTION
	CONDUIT, STUBBED & CAPPED

## FIRE ALARM SYMBOLS

	FIRE ALARM MANUAL PULL STATION, +48" A.F.F.
	MAGNETIC DOOR HOLDER
	SMOKE DETECTOR, DUCT, IONIZATION TYPE W/SAMPLING TUBE
	SMOKE DETECTOR, DUCT, PHOTO TYPE W/SAMPLING TUBE
	SMOKE DETECTOR, IONIZATION TYPE
	SMOKE DETECTOR, PHOTO TYPE
	HEAT DETECTOR, RATE-OF-RISE OR FIXED TEMP.
	FIRE MAIN FLOW DETECTION SWITCH
	FIRE MAIN TAMPER DETECTION SWITCH
	FIRE ALARM BELL, +80" A.F.F., U.O.N.
	FIRE ALARM HORN, +80" A.F.F.
	FIRE ALARM HORN/STROBE, +80" TO 96" A.F.F.
	FIRE ALARM STROBE, +80" TO 96" A.F.F.
	FIRE ALARM INPUT MODULE
	FIRE ALARM OUTPUT MODULE
	FIRE ALARM CONTROL PANEL
	FIRE ALARM REMOTE ANNUNCIATOR
	STAND ALONE - RESIDENTIAL SMOKE DETECTOR 120V W/ BATTERY
	CARBON MONOXIDE DETECTOR RESIDENTIAL 120V W/ BATTERY

## NOTATIONS

	DRAWING NOTE
	DETAIL REFERENCE: TOP=DETAIL NO., BOTTOM=SHEET NO.
	MECHANICAL EQUIPMENT MARK NO. (SEE EQUIPMENT SCHEDULE)
	EQUIPMENT NO. (SEE EQUIPMENT SCHEDULE)

## SECURITY SYMBOLS

	CCTV CAMERA
	PTZ DOME CAMERA (W/ PTZ OR FIX)
	INTRUSION SENSOR ('X' INDICATES DEG. OF COVERAGE)
	GLASS BREAK SENSOR
	DOOR POSITION SENSOR
	KEYPAD +48" A.F.F.
	PROXIMITY CARD READER +48" A.F.F.
	ELECTRIC LATCH/LOCK
	REQUEST TO EXIT DEVICE
	APPROX. CAMERA VIEW
	APARTMENT ENTRY SYSTEM

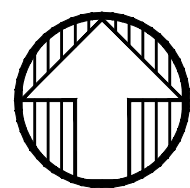
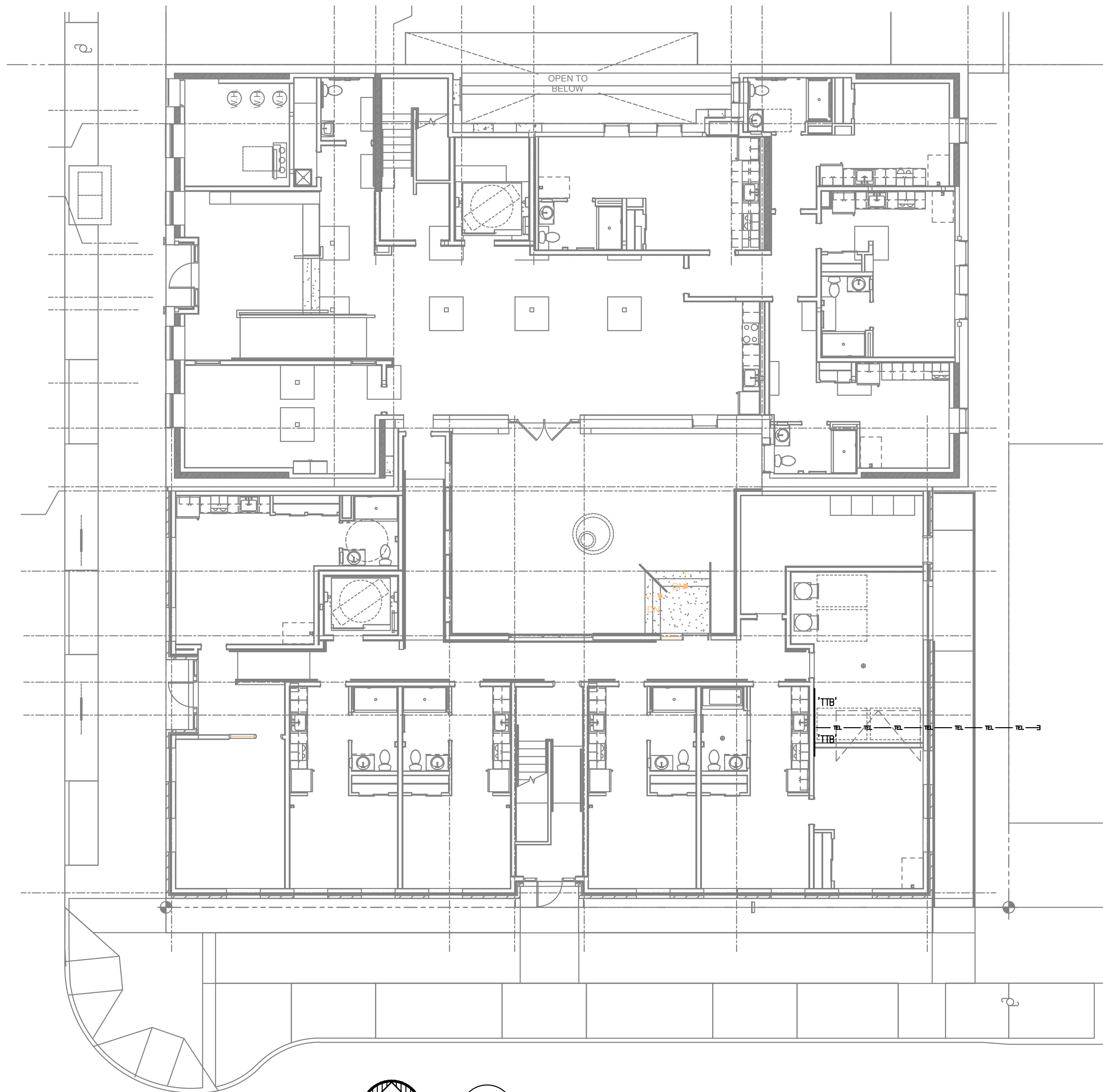
## PAGING AND INTERCOM SYMBOLS

	CEILING MOUNTED SPEAKER
	WALL MOUNTED SPEAKER
	INTERCOM CALL SWITCH
	SIGNAL BUZZER
	SIGNAL HORN
	VOLUME CONTROL +48" A.F.F.
	HOMERUN TO EQUIPMENT
	ZONE INDICATION
	SPEAKER CONNECTION, NOT INDICATING CABLE PATH

## ABBREVIATIONS

A.F.F.	ABOVE FINISHED FLOOR
APP.	APPROXIMATE
C	CONDUIT
C.O.	CONDUIT ONLY
CATV	CABLE TELEVISION
CCTV	CLOSED CIRCUIT TELEVISION
CLG	CEILING MOUNTED
(E)	EXISTING
FACP	FIRE ALARM CONTROL PANEL
FP	FACEPLATE
FS	FLOW SWITCH (SEE FIRE ALARM SYMBOLS)
FSD	FIRE/SMOKE DAMPER
GND	GROUND
I R	INFRARED
JB	JUNCTION BOX
N.I.C.	NOT IN CONTRACT
OFCI	OWNER FURNISHED, CONTRACTOR INSTALLED
OFOI	OWNER FURNISHED, OWNER INSTALLED
P.A.	PUBLIC ADDRESS
P.E.T.	PROTECTIVE ENTRANCE TERMINAL
SD	SMOKE DAMPER
TS	TAMPER SWITCH (SEE FIRE ALARM SYMBOLS)
TTB	TELEPHONE TERMINAL BOARD
TYP.	TYPICAL
U.G.	UNDERGROUND
U.O.N.	UNLESS OTHERWISE NOTED
W.G.	WIRE GUARD
W.P.	WEATHERPROOF
X.P.	EXPLOSION PROOF

NOTE: SOME OF THE SYMBOLS AND ABBREVIATIONS ON THIS LIST MAY NOT APPLY TO THIS PROJECT.



1  
T1.01

SITE PLAN - SOUTH BUILDING

SCALE: 3/32" = 1'-0"

#### GENERAL NOTES:

- ALL PLANS ARE CONSIDERED DIAGRAMMATICAL. THEREFORE ALL EQUIPMENT SIZES AND DEVICE LOCATIONS ARE APPROXIMATE AND SUBJECT TO FIELD CONDITIONS AND PRODUCT APPROVAL.
- UTILITY SERVICE ENTRANCE CONDUIT SIZE AND ROUTING TO BE CONFIRMED WITH OWNER SELECTED UTILITIES.
- COORDINATE WITH LOCAL UTILITY PROVIDER FOR DEPTH AND CONDUIT BEND REQUIREMENTS.
- CONTRACTOR TO LOCATE ALL UNDERGROUND UTILITIES BEFORE TRENCHING. COORDINATE WITH CIVIL.

**M**  
**E**  
**A**  
**INC.** Consulting Engineers  
2007 S.E. Ash St.  
Portland, OR 97214  
PHN: (503) 234-0548  
FAX: (503) 234-0677  
WWW.MEIA-ENG.COM  
CONTACT: GARY ADOVNIK

NOTE: DRAWINGS ARE AT HALF SCALE WHEN PRINTED AT 11X17  
COPYRIGHT - CARLETON HART ARCHITECTURE DO NOT REPRODUCE WITHOUT PERMISSION

PRELIMINARY  
NOT FOR  
CONSTRUCTION



**CARLETON HART ARCHITECTURE P.C.**  
830 SW 10th Avenue #200 Portland Oregon 97206  
503 243 2262 | www.carletonhart.com

**SUSAN EMMONS - SOUTH BUILDING**  
1727 NW HOYT STREET, PORTLAND, OR

**NORTHWEST HOUSING ALTERNATIVES**

CONSTRUCTION DOCUMENT  
CHECK SET

TECHNOLOGY  
SITE PLAN

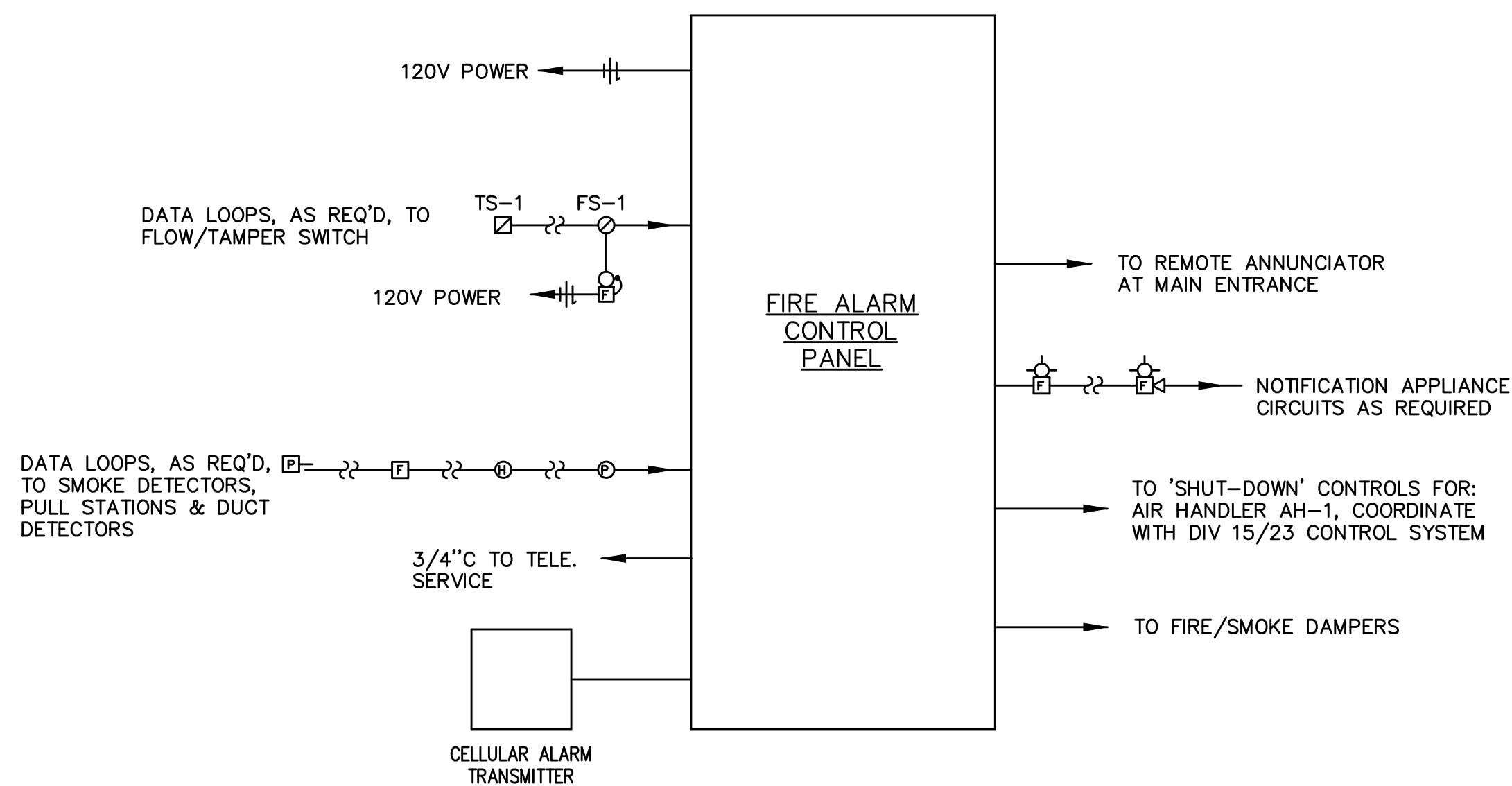
PROJECT NO.  
17004

07/06/2020

REVISIONS: #

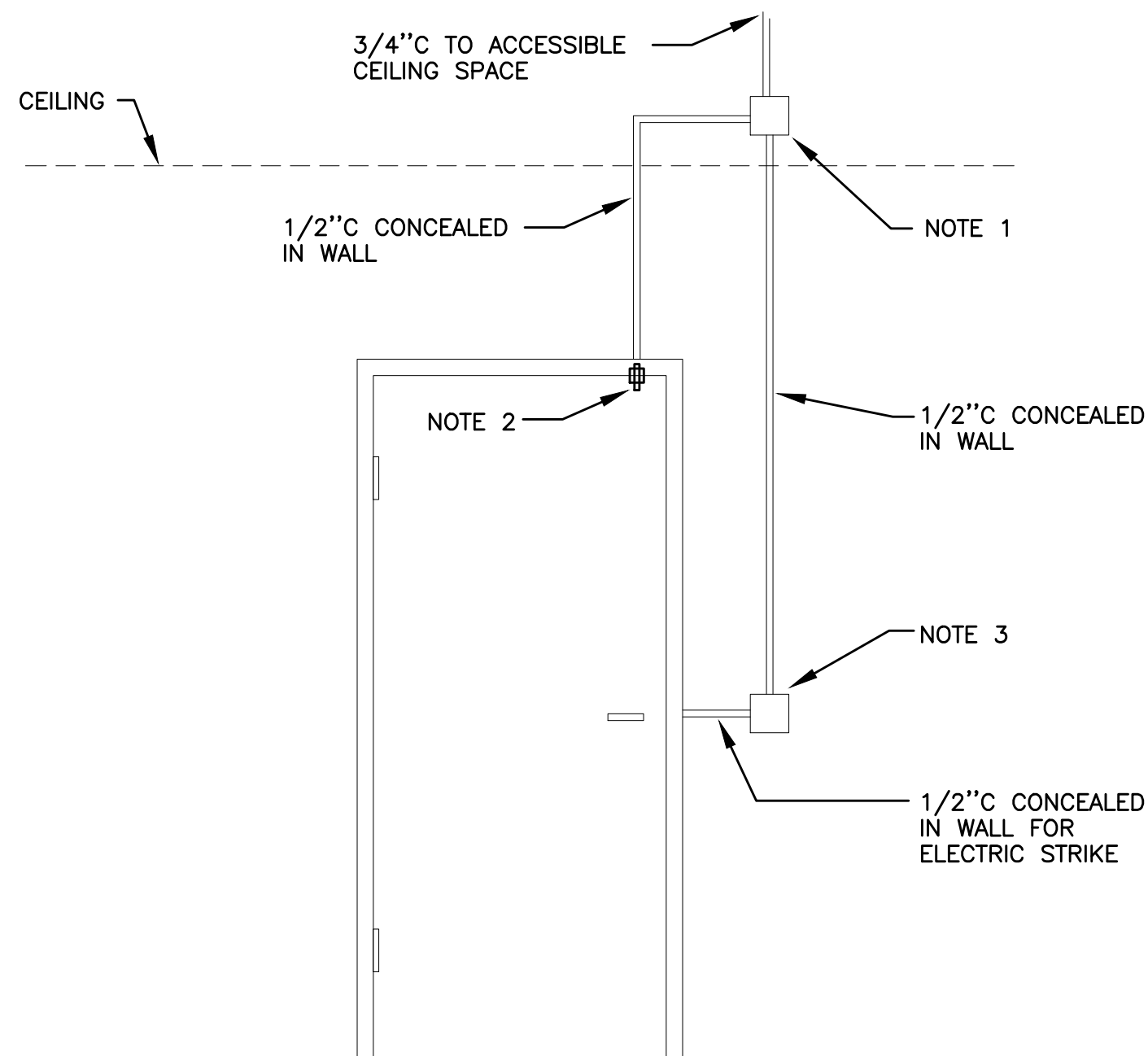
PRELIMINARY  
NOT FOR  
CONSTRUCTION

T1.01



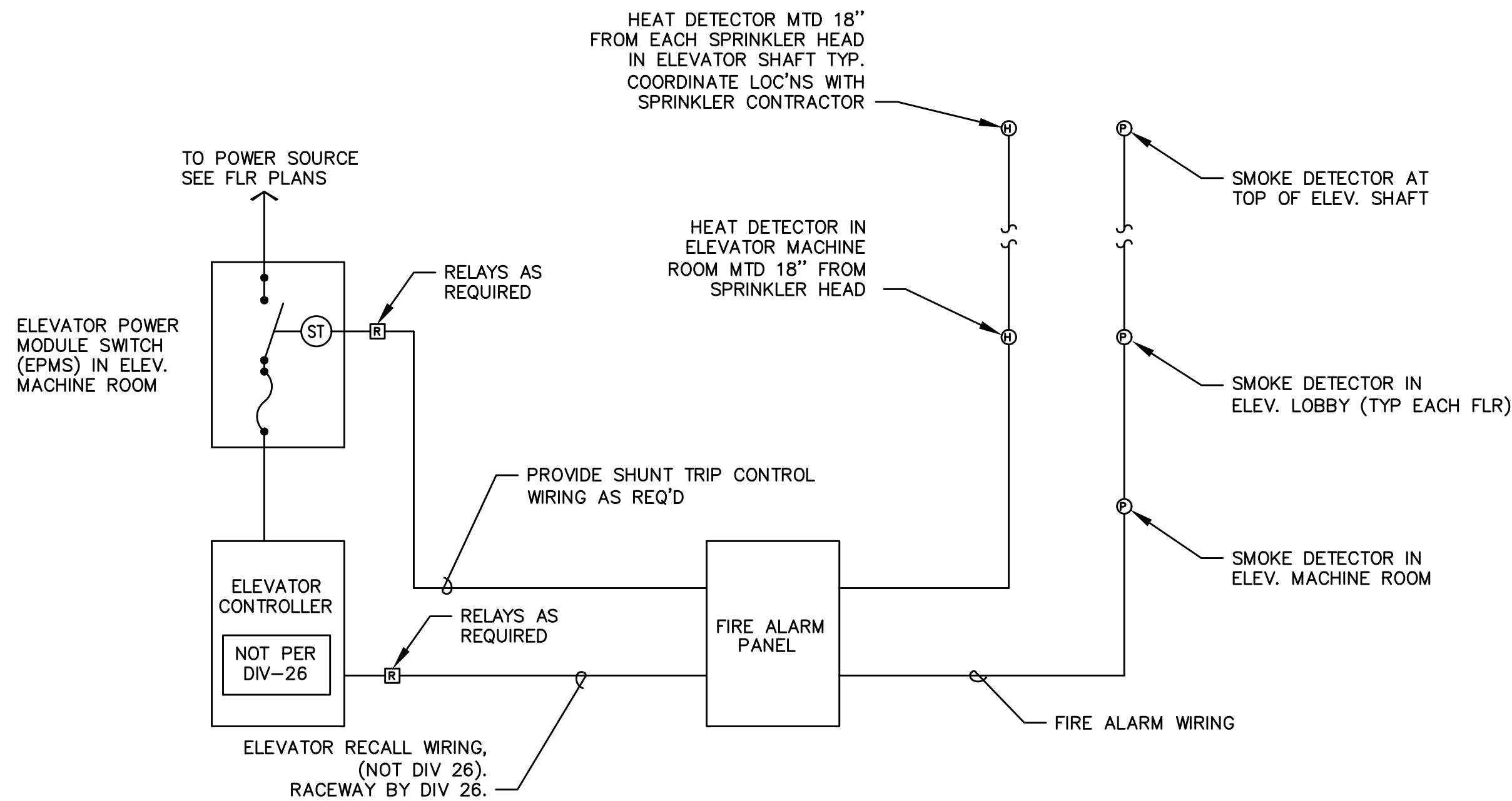
## 1 FIRE ALARM DETAIL

T2.01 N.T.S.



### SECURITY ROUGH-IN NOTES

- 4 SQUARE J-BOX @ 0'-6" ABOVE FINISHED CEILING, VERIFY WITH ARCHITECT.
- DOOR STATUS CONTACT, ONLY NEEDED WHEN STRIKE DOES NOT HAVE INTEGRAL SWITCH.
- DBL GANG BOX, PROVIDE SNGL GANG REDUCER RING IF NEEDED BY SECURITY DEVICE. COORDINATE WITH ARCHITECT TO MEET ADA REQUIREMENTS.

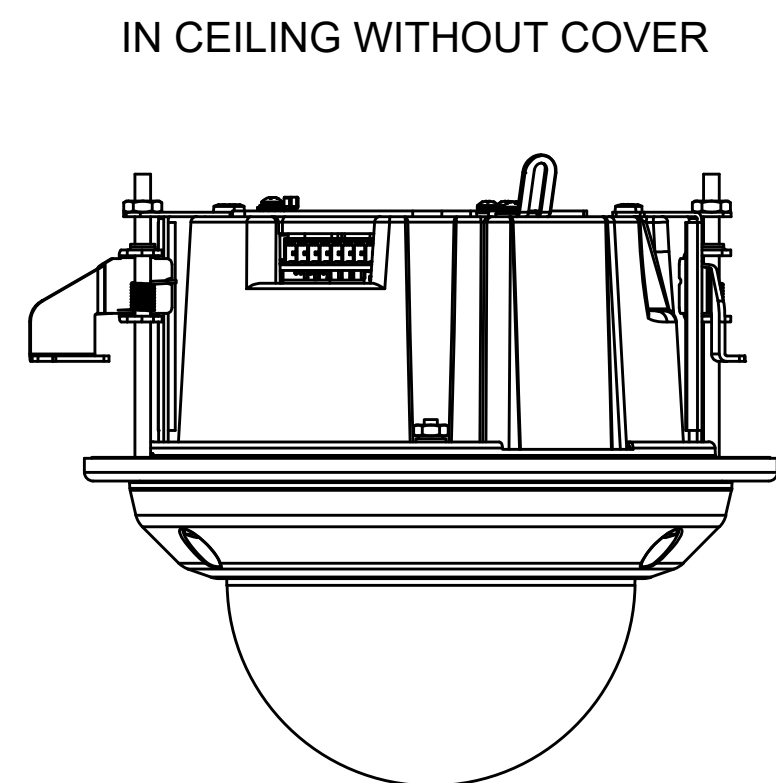


### NOTES

- CONNECT HEAT DETECTORS IN MACHINE RM AND ELEVATOR SHAFT SUCH THAT AN ALARM CONDITION WILL ACTIVATE SHUNT TRIP DEVICE IN 'EMPS'.
- CONNECT SMOKE DETECTORS IN MACHINE ROOM, ELEVATOR LOBBYS, AND ELEVATOR SHAFT SUCH THAT AN ALARM CONDITION WILL ACTIVATE ELEVATOR RECALL SYSTEM. COORDINATE WITH ELEVATOR SUPPLIER.

## 2 ELEVATOR RECALL & AUTO DISCONNECT DETAIL

T2.01 SCALE: NOT TO SCALE



FIRE ALARM AND DETECTION SYSTEM SHOWN ON PLAN(S) ARE FOR DESIGN INTENT ONLY. THIS IS A DEFERRED SUBMITTAL SYSTEM REQUIRING THE CONTRACTOR TO COMPLETE THE PERMIT READY DESIGN AND CALCULATIONS AS REQUIRED PER THE AUTHORITY HAVING JURISDICTION. VERIFY BUILDING OCCUPANCY TYPE AND OCCUPANT LOAD WITH ARCHITECTURAL PLANS.

**MFI** Consulting Engineers  
2007 S.E. Ash St.  
Portland, OR 97214  
PHN: (503) 234-0548  
FAX: (503) 234-0677  
WWW.MFI-ENG.COM  
CONTACT: GARY ADOVNIK

PRELIMINARY  
NOT FOR  
CONSTRUCTION



**CARLETON HART ARCHITECTURE P.C.**  
830 SW 10th Avenue #200 Portland Oregon 97206  
503 243 2252 | www.carlethonhart.com

**SUSAN EMMONS - SOUTH BUILDING**  
1727 NW HOYT STREET, PORTLAND, OR

**NORTHWEST HOUSING ALTERNATIVES**

CONSTRUCTION DOCUMENT  
CHECK SET

TECHNOLOGY  
DETAILS

PROJECT NO.  
17004

07/06/2020

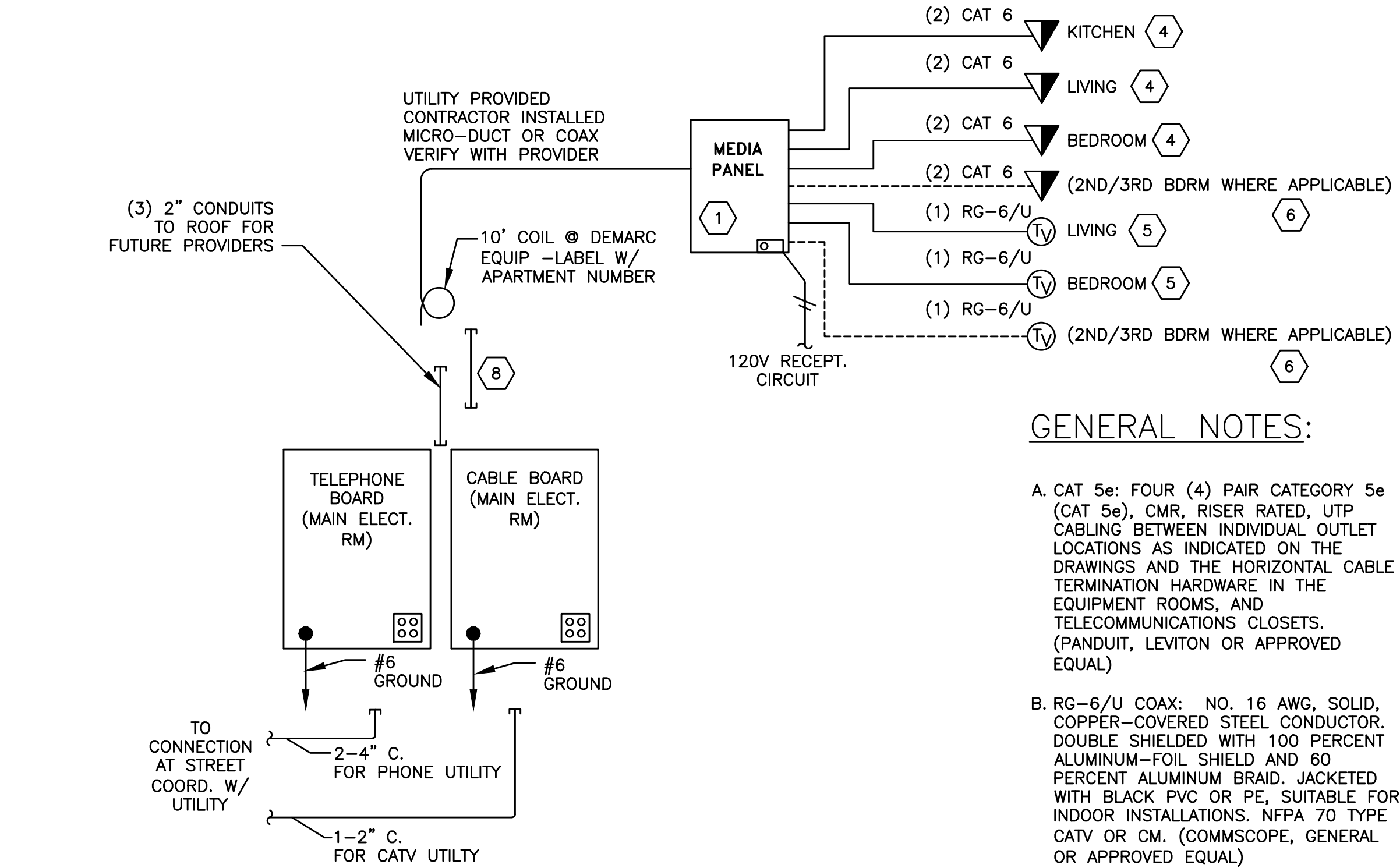
REVISIONS: #

PRELIMINARY  
NOT FOR  
CONSTRUCTION

T2.01

NOTE: DRAWINGS ARE AT HALF SCALE WHEN PRINTED AT 11X17

COPYRIGHT: CARLETON HART ARCHITECTURE DO NOT REPRODUCE WITHOUT PERMISSION



3 TELCOM CABLING DETAIL  
T1.3 N.T.S.

GENERAL NOTES:

- A. CAT 5e: FOUR (4) PAIR CATEGORY 5e (CAT 5e), CMR, RISER RATED, UTP CABLING BETWEEN INDIVIDUAL OUTLET LOCATIONS AS INDICATED ON THE DRAWINGS AND THE HORIZONTAL CABLE TERMINATION HARDWARE IN THE EQUIPMENT ROOMS, AND TELECOMMUNICATIONS CLOSETS. (PANDUIT, LEVITON OR APPROVED EQUAL)
- B. RG-6/U COAX: NO. 16 AWG, SOLID, COPPER-COVERED STEEL CONDUCTOR. DOUBLE SHIELDED WITH 100 PERCENT ALUMINUM-FOIL SHIELD AND 60 PERCENT ALUMINUM BRAID. JACKETED WITH BLACK PVC OR PE, SUITABLE FOR INDOOR INSTALLATIONS. NFPA 70 TYPE CATV OR CM. (COMMSCOPE, GENERAL OR APPROVED EQUAL)
- C. PROVIDE CONDUIT SLEEVES BETWEEN FLOORS AS NEEDED AND A SPARE 4" SLEEVE BETWEEN FLOORS.
- D. PROVIDE REQUIRED PHONE OUTLETS FOR FIRE ALARM AND ELEVATOR.
- E. PERFORM TESTS FOR WIRE MAP, LENGTH, ATTENUATION, NEXT, AND PROPAGATION DELAY FOR CATEGORY 5e LINKS.
- F. THE CONTRACTOR SHALL COMPILE TEST RESULTS INTO FORMS THAT CONTAIN ALL APPLICABLE TEST DATA. ALL FORMS SHALL BE NEATLY COMPLETED AND LEGIBLE WHEN SUBMITTED.

KEYED NOTES:

1. MEDIA PANEL: 42"H X 14.38" W X 3.96" D, FLUSH MOUNT IN WALL, (PRIMEX NON-METALLIC APPROVED EQUAL). INSTALL 8 PORT TELEPHONE MODULE (#NSOPTM8 OR APPROVED EQUAL), 8 PORT DATA MODULE (#NSODM8 OR APPROVED EQUAL), 6-WAY COAXIAL SPLITTER MODULE (#NSOVM6 OR APPROVED EQUAL) AND SURGE SUPPRESSION POWER KIT (#NSOKPS OR APPROVED EQUAL)
2. SPACE RESERVED FOR OWNER SUPPLIED NETWORK ELECTRONICS.
3. PROVIDE PHONE BOARD OR BOARDS AS NEEDED. CONTRACTOR MAY ADD INTERMEDIATE BOARDS IF LOCATIONS ARE APPROVED BY ARCHITECT AND TRUNK CABLE(S) AND CONNECTIONS ARE PROVIDED. COORDINATE COAX HOME RUNS WITH COMCAST.
4. PROVIDE (1) RJ-11 (HUBBELL PART #NSJU OR APPROVED EQUAL) AND (1) RJ-45 JACK (#NSJ5E OR APPROVED EQUAL) IN DUPLEX FACEPLATE (#NSP12 OR APPROVED EQUAL). COLORS AS SELECTED BY ARCHITECT.
5. PROVIDE "F" TYPE CONNECTOR (HUBBELL PART # SFFX OR APPROVED EQUAL) AND FACEPLATE (#NSP11 OR APPROVED EQUAL) COLOR AS SELECTED BY ARCHITECT.
6. ADD TELECOM JACK AND CATV JACK IN 2nd BEDROOM OF 2 BEDROOM UNITS.
7. PROVIDE WALL MOUNT CAT 5e PATCH PANELS (HUBBELL PART #P648UF OR APPROVED EQUAL. PROVIDE ENOUGH PATCH PANELS TO LEAVE A MINIMUM OF 24 SPARE PORTS.
8. PROVIDE (2) 4" SLEEVES BETWEEN FLOORS FOR UTILITY USE FROM MAIN DISTRIBUTION POINT TO INTERMEDIATE POINTS ON 2ND AND 4TH FLOORS.

FIRE ALARM AND DETECTION SYSTEM SHOWN ON PLAN(S) ARE FOR DESIGN INTENT ONLY. THIS IS A DEFERRED SUBMITTAL SYSTEM REQUIRING THE CONTRACTOR TO COMPLETE THE PERMIT READY DESIGN AND CALCULATIONS AS REQUIRED PER THE AUTHORITY HAVING JURISDICTION. VERIFY BUILDING OCCUPANCY TYPE AND OCCUPANT LOAD WITH ARCHITECTURAL PLANS.

**M**  
**E**  
**A**  
**INC.** Consulting Engineers  
2007 S.E. Ash St.  
Portland, OR 97214  
PHN: (503) 234-0548  
FAX: (503) 234-0677  
CONTACT: GARY ADOVNIK

PRELIMINARY  
NOT FOR  
CONSTRUCTION

**CARLETON HART ARCHITECTURE P.C.**  
830 sw 10th avenue #200 portland oregon 97206  
503 243 2262 | www.carlethonhart.com

**SUSAN EMMONS - SOUTH BUILDING**  
1727 NW HOYT STREET, PORTLAND, OR

**NORTHWEST HOUSING ALTERNATIVES**  
CONSTRUCTION DOCUMENT  
CHECK SET

TECHNOLOGY  
DETAILS

PROJECT NO.  
17004

07/06/2020

REVISIONS: #

PRELIMINARY  
NOT FOR  
CONSTRUCTION

T2.02

NOTE: DRAWINGS ARE AT HALF SCALE WHEN PRINTED AT 11X17

COPYRIGHT - CARLETON HART ARCHITECTURE DO NOT REPRODUCE WITHOUT PERMISSION

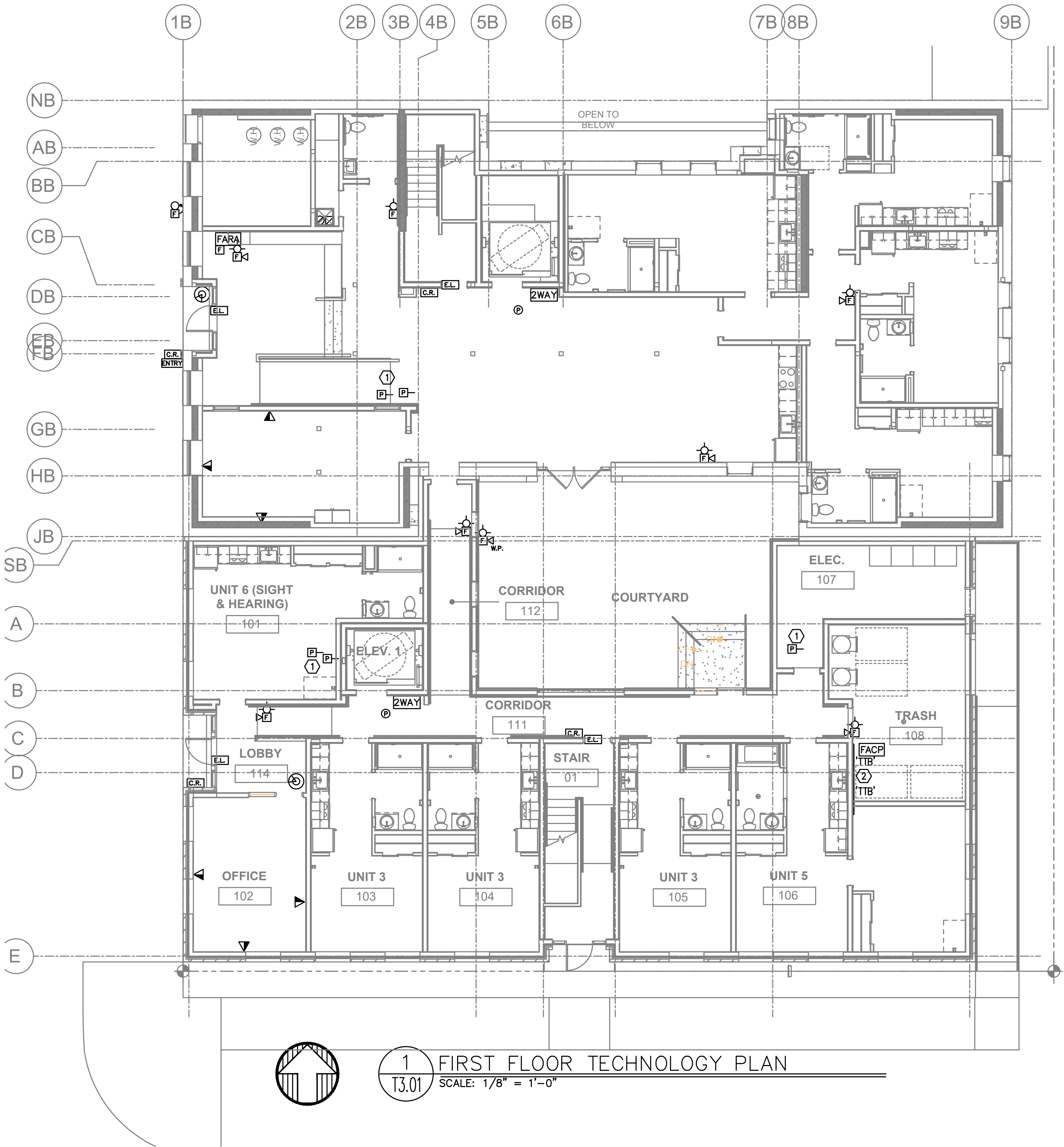


GENERAL NOTES:

- A. DRAWINGS ARE DIAGRAMMATICAL AND MAY NOT ACCURATELY REFLECT ACTUAL CONSTRUCTION CONDITIONS. THE CONTRACTOR SHALL BE RESPONSIBLE FOR COORDINATING THE INSTALLATION OF ALL EQUIPMENT THEY ARE INSTALLING, WITH ALL TRADES PRIOR TO AND DURING CONSTRUCTION.
- B. FOR VOICE/DATA OUTLETS PROVIDE A SINGLE GANG MUD-RING WITH A 1" CONDUIT FROM THE TOP OF THE MUD-RING TO ACCESSIBLE CEILING SPACE. TERMINATE CONDUIT WITH END CONNECTORS AND THREAD ON PLASTIC BUSHING FOR CABLE PROTECTION. OUTLET SHALL BE AT THE SAME HEIGHT AS ADJACENT POWER OUTLET AND LESS THAN 18" SEPARATION. COORDINATE WITH ELECTRICAL.
- C. REFER TO INTERIOR DECORATOR AND/OR ARCHITECTURAL DRAWINGS FOR DIMENSIONED LOCATION(S) AND ELEVATIONS OF FIXTURES & DEVICES. OTHER DEVICES SHOWN ON THE TECHNOLOGY PLANS AND NOT INDICATED ON THE DECORATOR'S OR ARCHITECT'S DRAWINGS, SHALL BE INSTALLED AT STANDARD MOUNTING HEIGHT AS INDICATED THE SYMBOL LIST.
- D. THERE SHALL BE NO SURFACE MOUNTED FIXTURES OR PATHWAYS (CONDUIT, ETC.) IN ANY PUBLICLY ACCESSIBLE SPACES, INCLUDING STAIRWELLS AND EXIT PASSAGEWAYS WITHOUT PRIOR APPROVAL BY OWNER AND ARCHITECT. ROUTE ALL PATHWAYS WITHIN STUD CAVITIES OR ABOVE FINISHED CEILINGS.
- E. ALL PENETRATIONS THROUGH FIREWALLS WILL NEED FIRESTOP OF THE APPROPRIATE RATING.

PLAN NOTES:

1. VERIFY EXACT COUNT AND LOCATIONS OF DUCT DETECTORS WITH MECHANICAL PLANS.
2. POINT OF ENTRY FOR COMMUNICATION UTILITIES.



FIRE ALARM AND DETECTION SYSTEM SHOWN ON PLAN(S) ARE FOR DESIGN INTENT ONLY. THIS IS A DEFERRED SUBMITTAL SYSTEM REQUIRING THE CONTRACTOR TO COMPLETE THE PERMIT READY DESIGN AND CALCULATIONS AS REQUIRED PER THE AUTHORITY HAVING JURISDICTION. VERIFY BUILDING OCCUPANCY TYPE AND OCCUPANT LOAD WITH ARCHITECTURAL PLANS.

**M** Consulting Engineers  
**E** 2007 S.E. Ash St.  
**A** Portland, OR 97214  
**INC.** PHN: (503) 234-0548  
FAX: (503) 234-0677  
CONTACT: GARY ADOVNIK

NOTE: DRAWINGS ARE AT HALF SCALE WHEN PRINTED AT 11X17

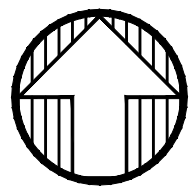
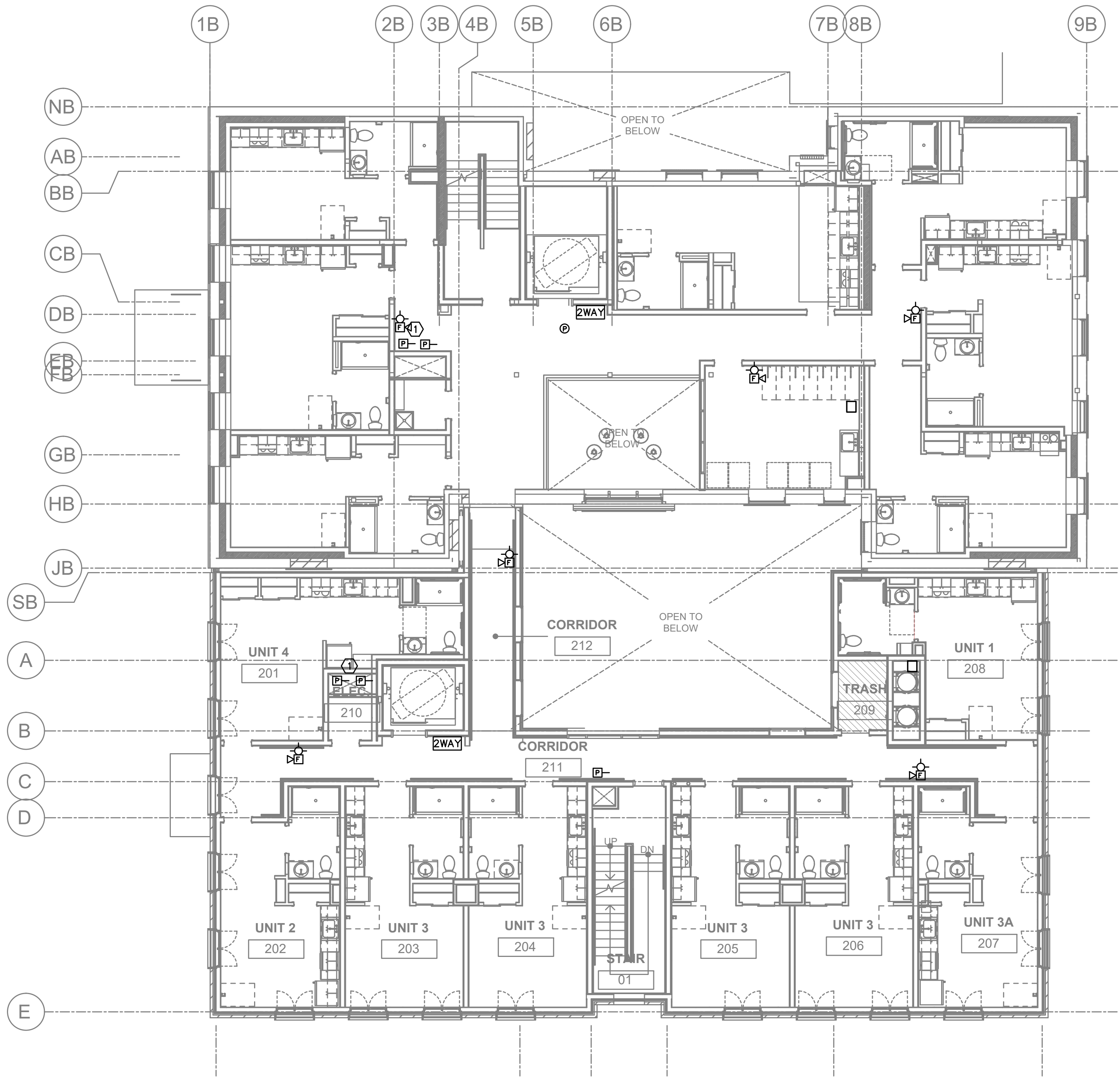
COPYRIGHT - CARLETON HART ARCHITECTURE DO NOT REPRODUCE WITHOUT PERMISSION

GENERAL NOTES:

- A. DRAWINGS ARE DIAGRAMMATICAL AND MAY NOT ACCURATELY REFLECT ACTUAL CONSTRUCTION CONDITIONS. THE CONTRACTOR SHALL BE RESPONSIBLE FOR COORDINATING THE INSTALLATION OF ALL EQUIPMENT THEY ARE INSTALLING, WITH ALL TRADES PRIOR TO AND DURING CONSTRUCTION.
- B. FOR VOICE/DATA OUTLETS PROVIDE A SINGLE GANG MUD-RING WITH A 1" CONDUIT FROM THE TOP OF THE MUD-RING TO ACCESSIBLE CEILING SPACE. TERMINATE CONDUIT WITH END CONNECTORS AND THREAD ON PLASTIC BUSHING FOR CABLE PROTECTION. OUTLET SHALL BE AT THE SAME HEIGHT AS ADJACENT POWER OUTLET AND LESS THAN 18" SEPARATION. COORDINATE WITH ELECTRICAL.
- C. REFER TO INTERIOR DECORATOR AND/OR ARCHITECTURAL DRAWINGS FOR DIMENSIONED LOCATION(S) AND ELEVATIONS OF FIXTURES & DEVICES. OTHER DEVICES SHOWN ON THE TECHNOLOGY PLANS AND NOT INDICATED ON THE DECORATOR'S OR ARCHITECT'S DRAWINGS, SHALL BE INSTALLED AT STANDARD MOUNTING HEIGHT AS INDICATED THE SYMBOL LIST.
- D. THERE SHALL BE NO SURFACE MOUNTED FIXTURES OR PATHWAYS (CONDUIT, ETC.) IN ANY PUBLICLY ACCESSIBLE SPACES, INCLUDING STAIRWELLS AND EXIT PASSAGEWAYS WITHOUT PRIOR APPROVAL BY OWNER AND ARCHITECT. ROUTE ALL PATHWAYS WITHIN STUD CAVITIES OR ABOVE FINISHED CEILINGS.
- E. ALL PENETRATIONS THROUGH FIREWALLS WILL NEED FIRESTOP OF THE APPROPRIATE RATING.

PLAN NOTES:

1. VERIFY EXACT COUNT AND LOCATIONS OF DUCT DETECTORS WITH MECHANICAL PLANS.
2. POINT OF ENTRY FOR COMMUNICATION UTILITIES.



1 SECOND FLOOR TECHNOLOGY PLAN  
T3.02 SCALE: 1/8" = 1'-0"

FIRE ALARM AND DETECTION SYSTEM SHOWN ON PLAN(S) ARE FOR DESIGN INTENT ONLY. THIS IS A DEFERRED SUBMITTAL SYSTEM REQUIRING THE CONTRACTOR TO COMPLETE THE PERMIT READY DESIGN AND CALCULATIONS AS REQUIRED PER THE AUTHORITY HAVING JURISDICTION. VERIFY BUILDING OCCUPANCY TYPE AND OCCUPANT LOAD WITH ARCHITECTURAL PLANS.

**M** Consulting Engineers  
**E** 2007 S.E. Ash St.  
**A** Portland, OR 97214  
**INC.** PHN: (503) 234-0548  
FAX: (503) 234-0677  
CONTACT: GARY ADOVNIK

NOTE: DRAWINGS ARE AT HALF SCALE WHEN PRINTED AT 11X17  
COPYRIGHT - CARLETON HART ARCHITECTURE DO NOT REPRODUCE WITHOUT PERMISSION

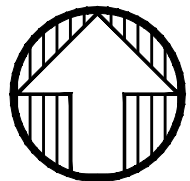
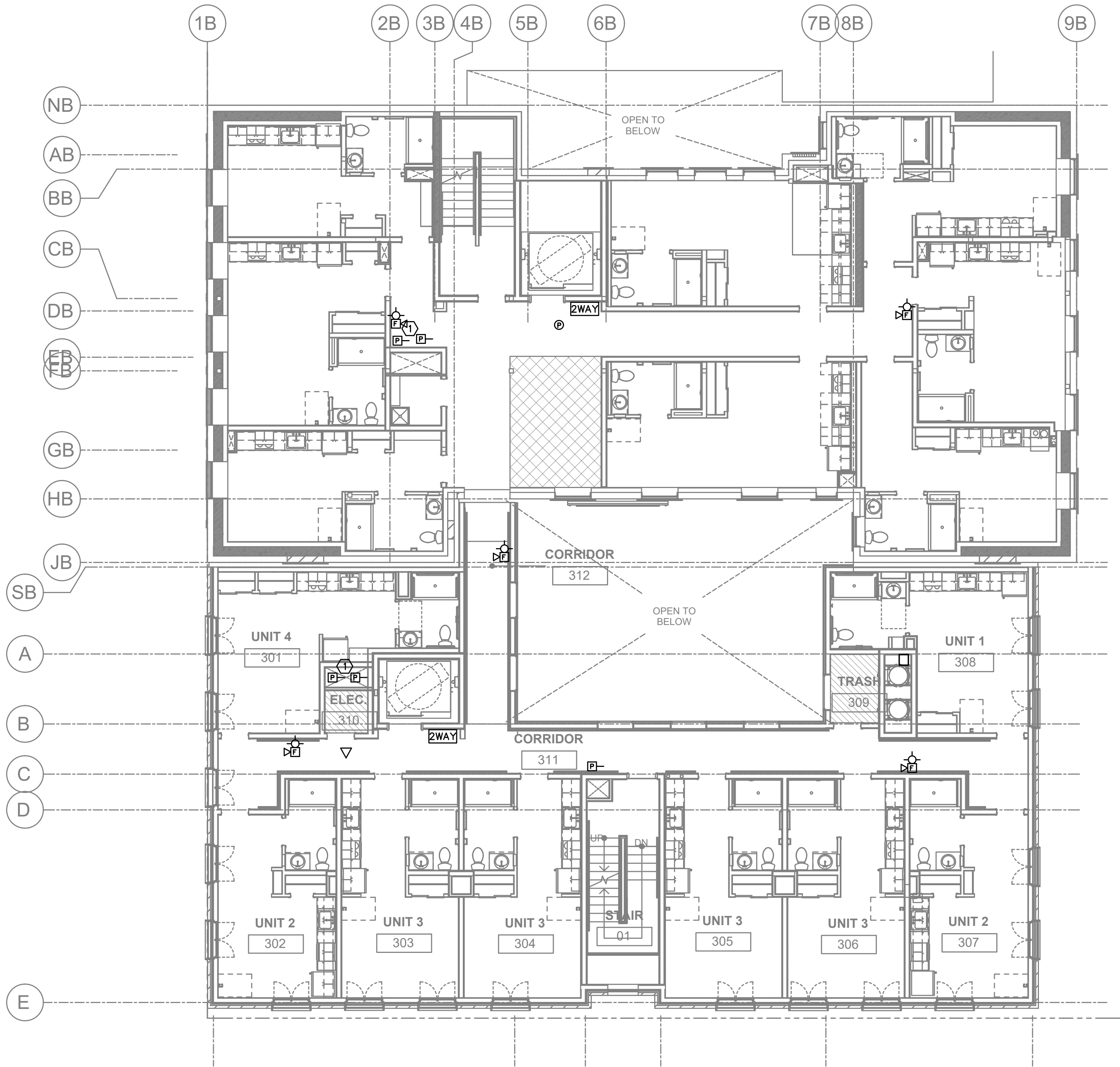


GENERAL NOTES:

- A. DRAWINGS ARE DIAGRAMMATICAL AND MAY NOT ACCURATELY REFLECT ACTUAL CONSTRUCTION CONDITIONS. THE CONTRACTOR SHALL BE RESPONSIBLE FOR COORDINATING THE INSTALLATION OF ALL EQUIPMENT THEY ARE INSTALLING, WITH ALL TRADES PRIOR TO AND DURING CONSTRUCTION.
- B. FOR VOICE/DATA OUTLETS PROVIDE A SINGLE GANG MUD-RING WITH A 1" CONDUIT FROM THE TOP OF THE MUD-RING TO ACCESSIBLE CEILING SPACE. TERMINATE CONDUIT WITH END CONNECTORS AND THREAD ON PLASTIC BUSHING FOR CABLE PROTECTION. OUTLET SHALL BE AT THE SAME HEIGHT AS ADJACENT POWER OUTLET AND LESS THAN 18" SEPARATION. COORDINATE WITH ELECTRICAL.
- C. REFER TO INTERIOR DECORATOR AND/OR ARCHITECTURAL DRAWINGS FOR DIMENSIONED LOCATION(S) AND ELEVATIONS OF FIXTURES & DEVICES. OTHER DEVICES SHOWN ON THE TECHNOLOGY PLANS AND NOT INDICATED ON THE DECORATOR'S OR ARCHITECT'S DRAWINGS, SHALL BE INSTALLED AT STANDARD MOUNTING HEIGHT AS INDICATED THE SYMBOL LIST.
- D. THERE SHALL BE NO SURFACE MOUNTED FIXTURES OR PATHWAYS (CONDUIT, ETC.) IN ANY PUBLICLY ACCESSIBLE SPACES, INCLUDING STAIRWELLS AND EXIT PASSAGEWAYS WITHOUT PRIOR APPROVAL BY OWNER AND ARCHITECT. ROUTE ALL PATHWAYS WITHIN STUD CAVITIES OR ABOVE FINISHED CEILINGS.
- E. ALL PENETRATIONS THROUGH FIREWALLS WILL NEED FIRESTOP OF THE APPROPRIATE RATING.

PLAN NOTES:

1. VERIFY EXACT COUNT AND LOCATIONS OF DUCT DETECTORS WITH MECHANICAL PLANS.
2. POINT OF ENTRY FOR COMMUNICATION UTILITIES.



1  
T3.03

THIRD FLOOR TECHNOLOGY PLAN  
SCALE: 1/8" = 1'-0"

FIRE ALARM AND DETECTION SYSTEM SHOWN ON PLAN(S) ARE FOR DESIGN INTENT ONLY. THIS IS A DEFERRED SUBMITTAL SYSTEM REQUIRING THE CONTRACTOR TO COMPLETE THE PERMIT READY DESIGN AND CALCULATIONS AS REQUIRED PER THE AUTHORITY HAVING JURISDICTION. VERIFY BUILDING OCCUPANCY TYPE AND OCCUPANT LOAD WITH ARCHITECTURAL PLANS.

**M** Consulting Engineers  
**E** 2007 S.E. Ash St.  
**A** Portland, OR 97214  
**INC.** PHN: (503) 234-0548  
FAX: (503) 234-0677  
CONTACT: GARY ADOVNIK

NOTE: DRAWINGS ARE AT HALF SCALE WHEN PRINTED AT 11X17

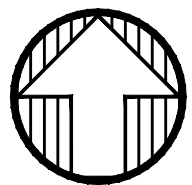
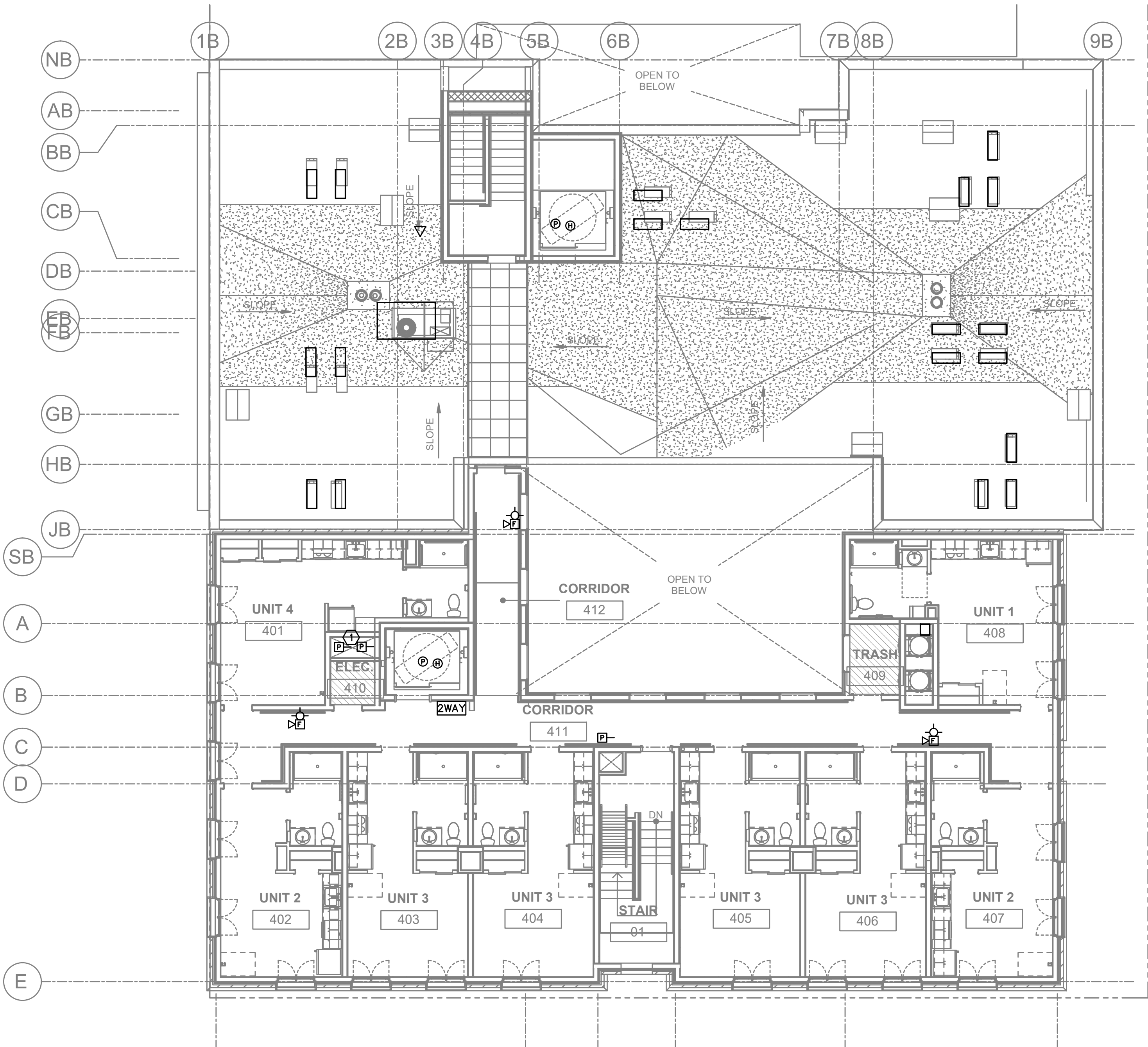
COPYRIGHT - CARLETON HART ARCHITECTURE DO NOT REPRODUCE WITHOUT PERMISSION

GENERAL NOTES:

- A. DRAWINGS ARE DIAGRAMMATICAL AND MAY NOT ACCURATELY REFLECT ACTUAL CONSTRUCTION CONDITIONS. THE CONTRACTOR SHALL BE RESPONSIBLE FOR COORDINATING THE INSTALLATION OF ALL EQUIPMENT THEY ARE INSTALLING, WITH ALL TRADES PRIOR TO AND DURING CONSTRUCTION.
- B. FOR VOICE/DATA OUTLETS PROVIDE A SINGLE GANG MUD-RING WITH A 1" CONDUIT FROM THE TOP OF THE MUD-RING TO ACCESSIBLE CEILING SPACE. TERMINATE CONDUIT WITH END CONNECTORS AND THREAD ON PLASTIC BUSHING FOR CABLE PROTECTION. OUTLET SHALL BE AT THE SAME HEIGHT AS ADJACENT POWER OUTLET AND LESS THAN 18" SEPARATION. COORDINATE WITH ELECTRICAL.
- C. REFER TO INTERIOR DECORATOR AND/OR ARCHITECTURAL DRAWINGS FOR DIMENSIONED LOCATION(S) AND ELEVATIONS OF FIXTURES & DEVICES. OTHER DEVICES SHOWN ON THE TECHNOLOGY PLANS AND NOT INDICATED ON THE DECORATOR'S OR ARCHITECT'S DRAWINGS, SHALL BE INSTALLED AT STANDARD MOUNTING HEIGHT AS INDICATED THE SYMBOL LIST.
- D. THERE SHALL BE NO SURFACE MOUNTED FIXTURES OR PATHWAYS (CONDUIT, ETC.) IN ANY PUBLICLY ACCESSIBLE SPACES, INCLUDING STAIRWELLS AND EXIT PASSAGEWAYS WITHOUT PRIOR APPROVAL BY OWNER AND ARCHITECT. ROUTE ALL PATHWAYS WITHIN STUD CAVITIES OR ABOVE FINISHED CEILINGS.
- E. ALL PENETRATIONS THROUGH FIREWALLS WILL NEED FIRESTOP OF THE APPROPRIATE RATING.

PLAN NOTES:

1. VERIFY EXACT COUNT AND LOCATIONS OF DUCT DETECTORS WITH MECHANICAL PLANS.
2. POINT OF ENTRY FOR COMMUNICATION UTILITIES.



1 FOURTH FLOOR TECHNOLOGY PLAN  
T3.04 SCALE: 1/8" = 1'-0"

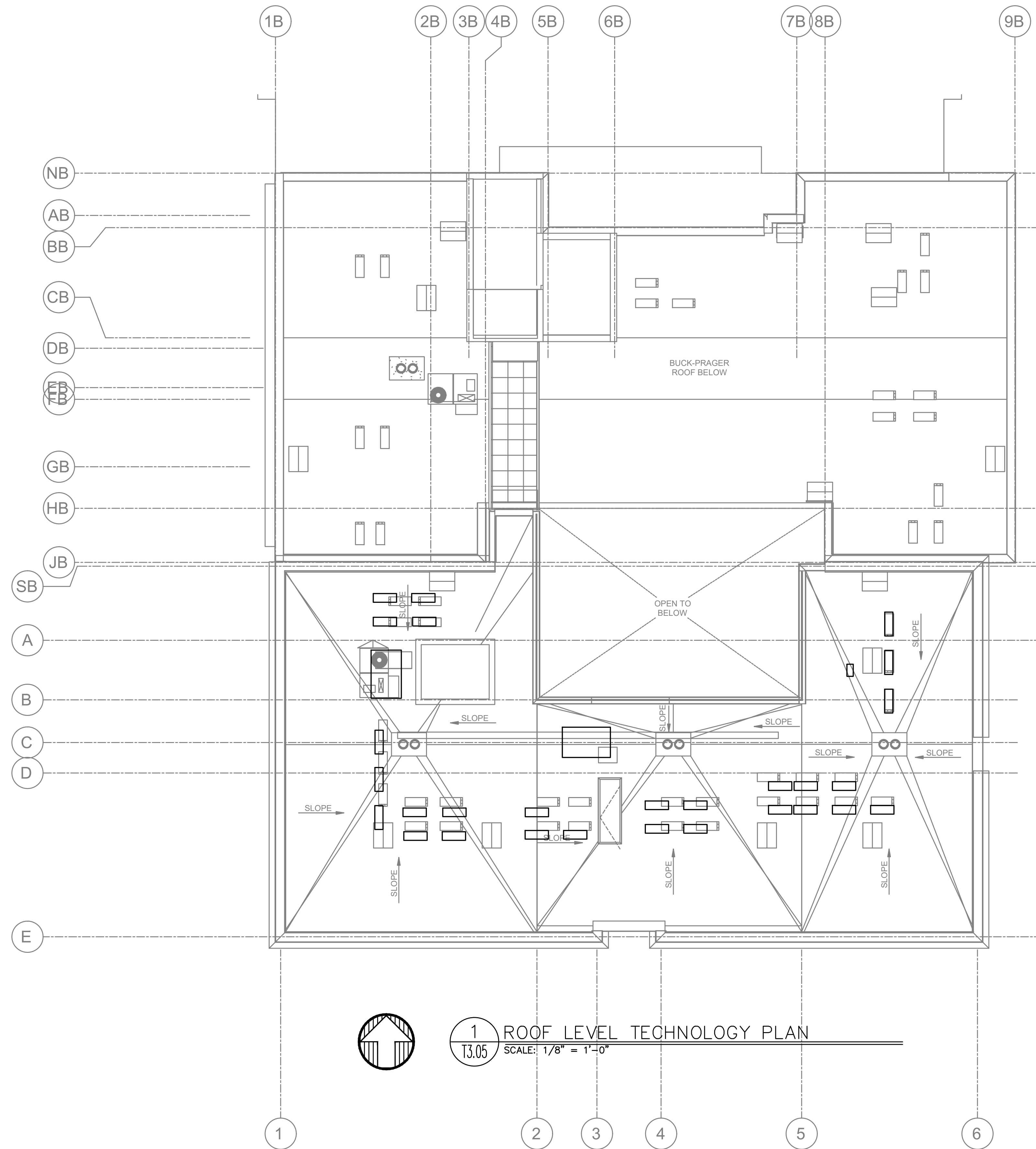
FIRE ALARM AND DETECTION SYSTEM SHOWN ON PLAN(S) ARE FOR DESIGN INTENT ONLY. THIS IS A DEFERRED SUBMITTAL SYSTEM REQUIRING THE CONTRACTOR TO COMPLETE THE PERMIT READY DESIGN AND CALCULATIONS AS REQUIRED PER THE AUTHORITY HAVING JURISDICTION. VERIFY BUILDING OCCUPANCY TYPE AND OCCUPANT LOAD WITH ARCHITECTURAL PLANS.

**M** Consulting Engineers  
**E** 2007 S.E. Ash St.  
**A** Portland, OR 97214  
**INC.** PHN: (503) 234-0548  
FAX: (503) 234-0677  
CONTACT: GARY ADOVNIK

NOTE: DRAWINGS ARE AT HALF SCALE WHEN PRINTED AT 11X17

COPYRIGHT - CARLETON HART ARCHITECTURE DO NOT REPRODUCE WITHOUT PERMISSION





- GENERAL NOTES:
- A. DRAWINGS ARE DIAGRAMMATICAL AND MAY NOT ACCURATELY REFLECT ACTUAL CONSTRUCTION CONDITIONS. THE CONTRACTOR SHALL BE RESPONSIBLE FOR COORDINATING THE INSTALLATION OF ALL EQUIPMENT THEY ARE INSTALLING, WITH ALL TRADES PRIOR TO AND DURING CONSTRUCTION.
  - B. FOR VOICE/DATA OUTLETS PROVIDE A SINGLE GANG MUD-RING WITH A 1" CONDUIT FROM THE TOP OF THE MUD-RING TO ACCESSIBLE CEILING SPACE. TERMINATE CONDUIT WITH END CONNECTORS AND THREAD ON PLASTIC BUSHING FOR CABLE PROTECTION. OUTLET SHALL BE AT THE SAME HEIGHT AS ADJACENT POWER OUTLET AND LESS THAN 18" SEPARATION. COORDINATE WITH ELECTRICAL.
  - C. REFER TO INTERIOR DECORATOR AND/OR ARCHITECTURAL DRAWINGS FOR DIMENSIONED LOCATION(S) AND ELEVATIONS OF FIXTURES & DEVICES. OTHER DEVICES SHOWN ON THE TECHNOLOGY PLANS AND NOT INDICATED ON THE DECORATOR'S OR ARCHITECT'S DRAWINGS, SHALL BE INSTALLED AT STANDARD MOUNTING HEIGHT AS INDICATED THE SYMBOL LIST.
  - D. THERE SHALL BE NO SURFACE MOUNTED FIXTURES OR PATHWAYS (CONDUIT, ETC.) IN ANY PUBLICLY ACCESSIBLE SPACES, INCLUDING STAIRWELLS AND EXIT PASSAGEWAYS WITHOUT PRIOR APPROVAL BY OWNER AND ARCHITECT. ROUTE ALL PATHWAYS WITHIN STUD CAVITIES OR ABOVE FINISHED CEILINGS.
  - E. ALL PENETRATIONS THROUGH FIREWALLS WILL NEED FIRESTOP OF THE APPROPRIATE RATING.

- PLAN NOTES:
- 1. VERIFY EXACT COUNT AND LOCATIONS OF DUCT DETECTORS WITH MECHANICAL PLANS.
  - 2. POINT OF ENTRY FOR COMMUNICATION UTILITIES.

FIRE ALARM AND DETECTION SYSTEM SHOWN ON PLAN(S) ARE FOR DESIGN INTENT ONLY. THIS IS A DEFERRED SUBMITTAL SYSTEM REQUIRING THE CONTRACTOR TO COMPLETE THE PERMIT READY DESIGN AND CALCULATIONS AS REQUIRED PER THE AUTHORITY HAVING JURISDICTION. VERIFY BUILDING OCCUPANCY TYPE AND OCCUPANT LOAD WITH ARCHITECTURAL PLANS.

**M** Consulting Engineers  
**E** 2007 S.E. Ash St.  
**A** Portland, OR 97214  
**INC.** PHN: (503) 234-0548  
FAX: (503) 234-0677  
CONTACT: GARY ADOVNIK

PRELIMINARY  
NOT FOR  
CONSTRUCTION



CARLETON HART ARCHITECTURE P.C.  
830 SW 10th Avenue #200 Portland Oregon 97206  
503.243.2262 | www.carlethonhart.com

SUSAN EMMONS - SOUTH BUILDING  
1727 NW HOYT STREET, PORTLAND, OR  
NORTHWEST HOUSING ALTERNATIVES  
CONSTRUCTION DOCUMENT  
CHECK SET

ROOF LEVEL  
TECHNOLOGY  
PLAN

1 / UU4

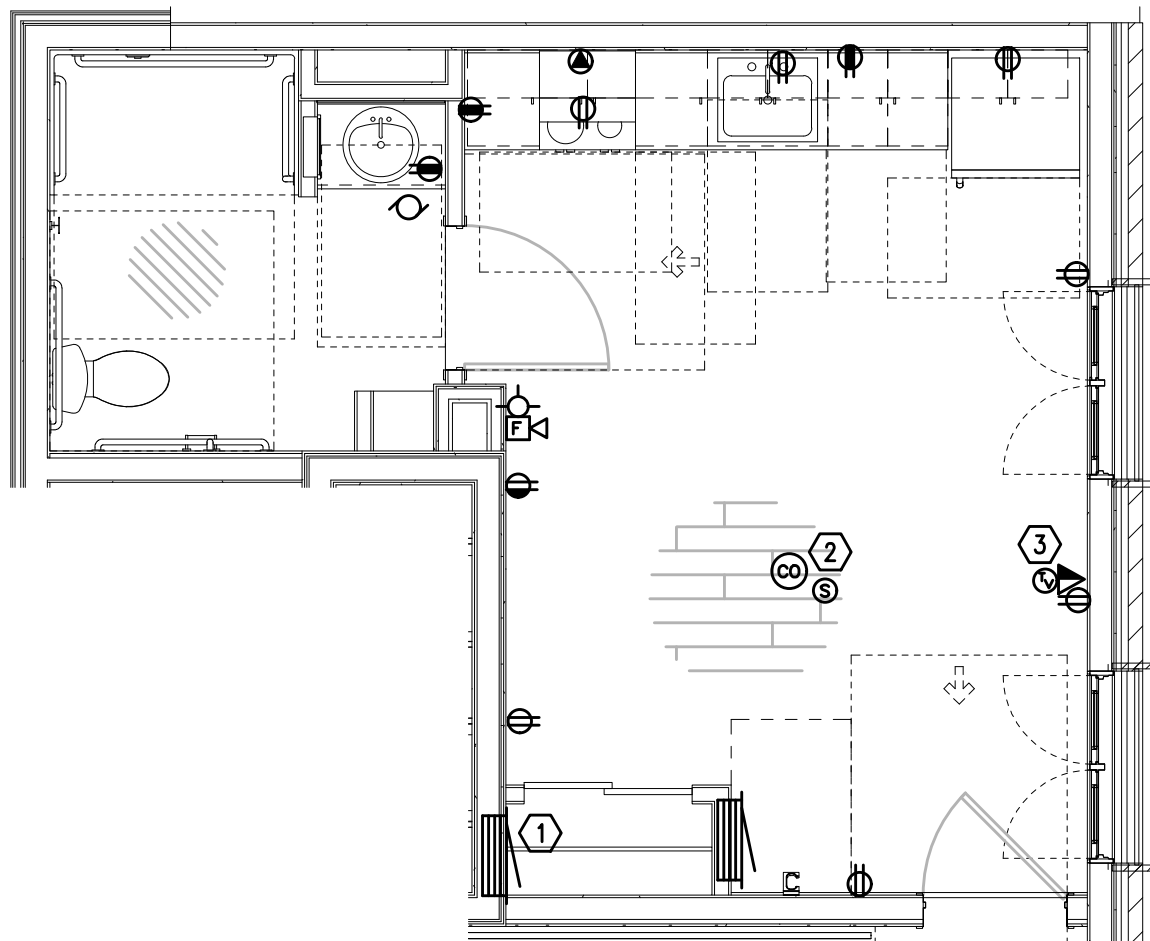
07/06/2020

REVISIONS: #

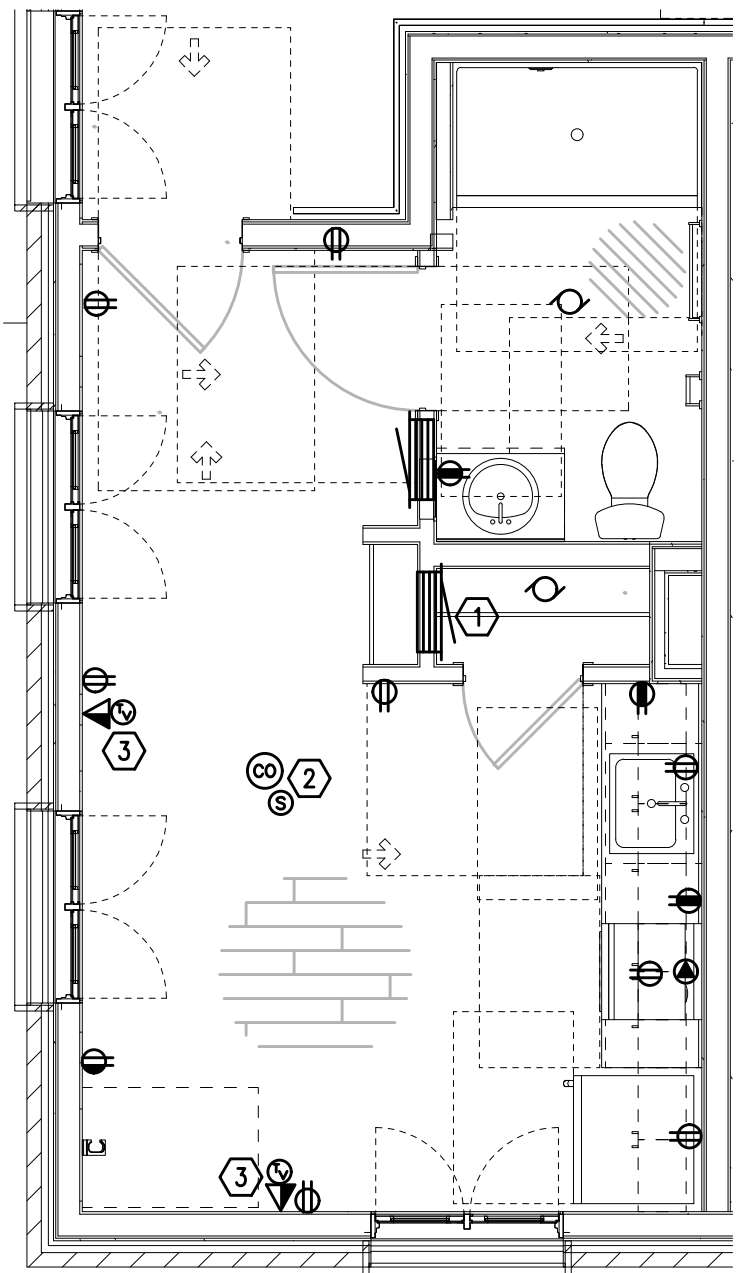
T3.05

NOTE: DRAWINGS ARE AT HALF SCALE WHEN PRINTED AT 11X17

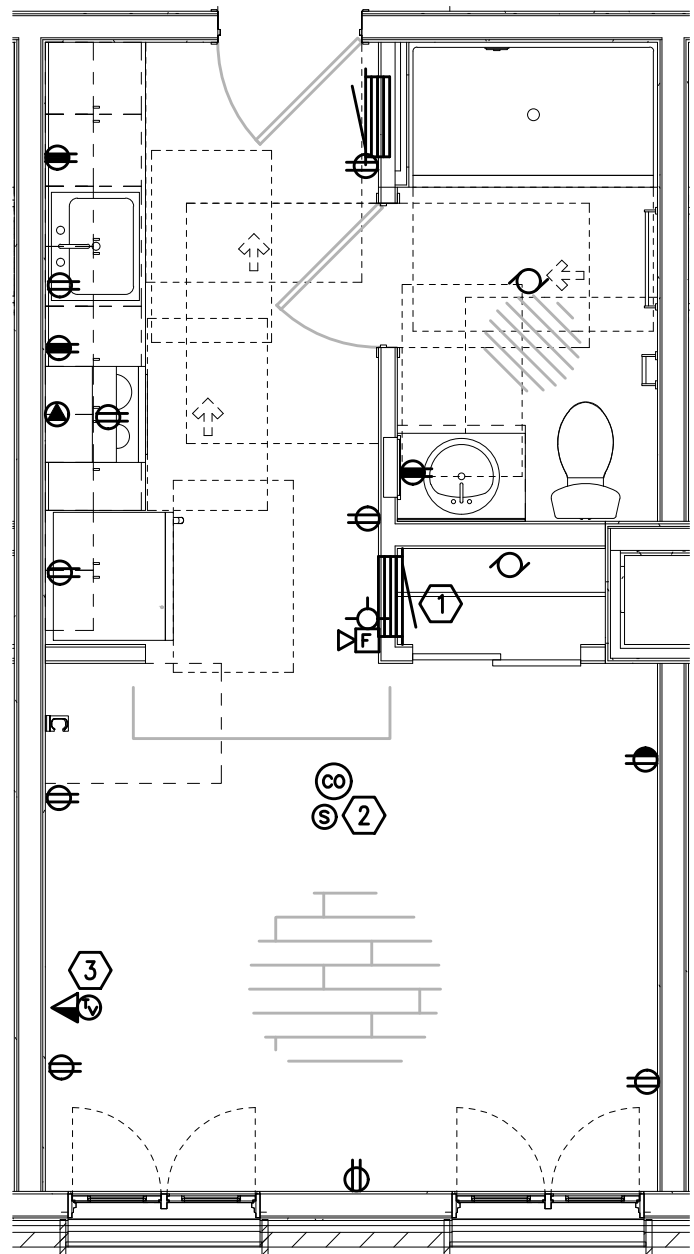
COPYRIGHT : CARLETON HART ARCHITECTURE DO NOT REPRODUCE WITHOUT PERMISSION



UNIT TYPE 1 ADA  
TYPICAL TELCOM PLAN  
1  
T4.01 SCALE: 1/4" = 1'-0"



UNIT TYPE 2  
TYPICAL TELCOM PLAN  
2  
T4.01 SCALE: 1/4" = 1'-0"



UNIT TYPE 3  
TYPICAL TELCOM PLAN  
3  
T4.01 SCALE: 1/4" = 1'-0"

GENERAL NOTES:

- A. DRAWINGS ARE DIAGRAMMATICAL AND MAY NOT ACCURATELY REFLECT ACTUAL CONSTRUCTION CONDITIONS. THE CONTRACTOR SHALL BE RESPONSIBLE FOR COORDINATING THE INSTALLATION OF ALL EQUIPMENT THEY ARE INSTALLING, WITH ALL TRADES PRIOR TO AND DURING CONSTRUCTION.
- B. FOR VOICE/DATA OUTLETS PROVIDE A SINGLE GANG MUD-RING WITH A 1" CONDUIT FROM THE TOP OF THE MUD-RING TO ACCESSIBLE CEILING SPACE. TERMINATE CONDUIT WITH END CONNECTORS AND THREAD ON PLASTIC BUSHING FOR CABLE PROTECTION. OUTLET SHALL BE AT THE SAME HEIGHT AS ADJACENT POWER OUTLET AND LESS THAN 18" SEPARATION. COORDINATE WITH ELECTRICAL.
- C. COORDINATE ALL DEVICE LOCATIONS WITH LATEST ARCHITECTURAL INTERIOR ELEVATIONS TO VERIFY DEVICES WILL NOT BE OBSTRUCTED.
- D. PROVIDE PULL STRING IN ALL CONDUITS FOR LATER USE.
- E. ALL PENETRATIONS THROUGH FIREWALLS WILL NEED FIRESTOP OF THE APPROPRIATE RATING.

KEYED NOTES:

- 1. SMART PANEL FOR UTILITY DEMARCATION WITHIN UNIT. PROVIDE RF TRANSPARENT PANEL.
- 2. SMOKE AND CO DETECTOR CAN BE A SINGLE UNIT.
- 3. (1) COAXIAL AND (2) CATEGORY CABLES AND OUTLETS PER FACEPLATE.

PRELIMINARY  
NOT FOR  
CONSTRUCTION

CARLETON HART ARCHITECTURE P.C.  
830 SW 10th Avenue #200 Portland Oregon 97206  
503 243 2262 | www.carlethonhart.com

SUSAN EMMONS - SOUTH BUILDING  
1727 NW HOYT STREET, PORTLAND, OR  
NORTHWEST HOUSING ALTERNATIVES  
CONSTRUCTION DOCUMENT  
CHECK SET

TYPICAL ENLARGED  
UNIT PLANS

PROJECT NO.  
17004

07/06/2020

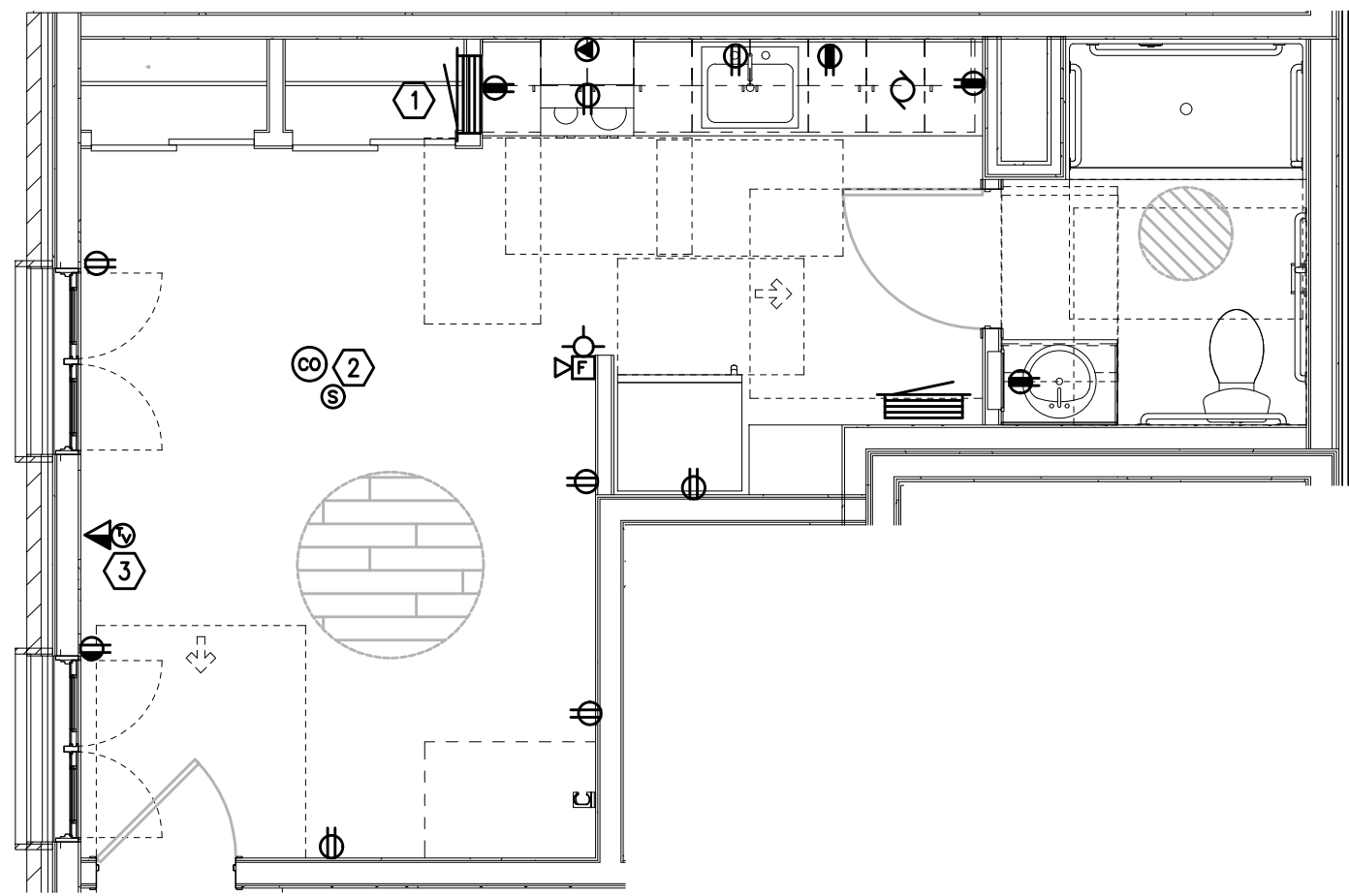
REVISIONS: #

M Consulting Engineers  
2007 S.E. Ash St.  
Portland, OR 97214  
PHN: (503) 234-0548  
FAX: (503) 234-0677  
INC. WWW.MFIA-ENG.COM  
CONTACT: GARY ADOVNIK

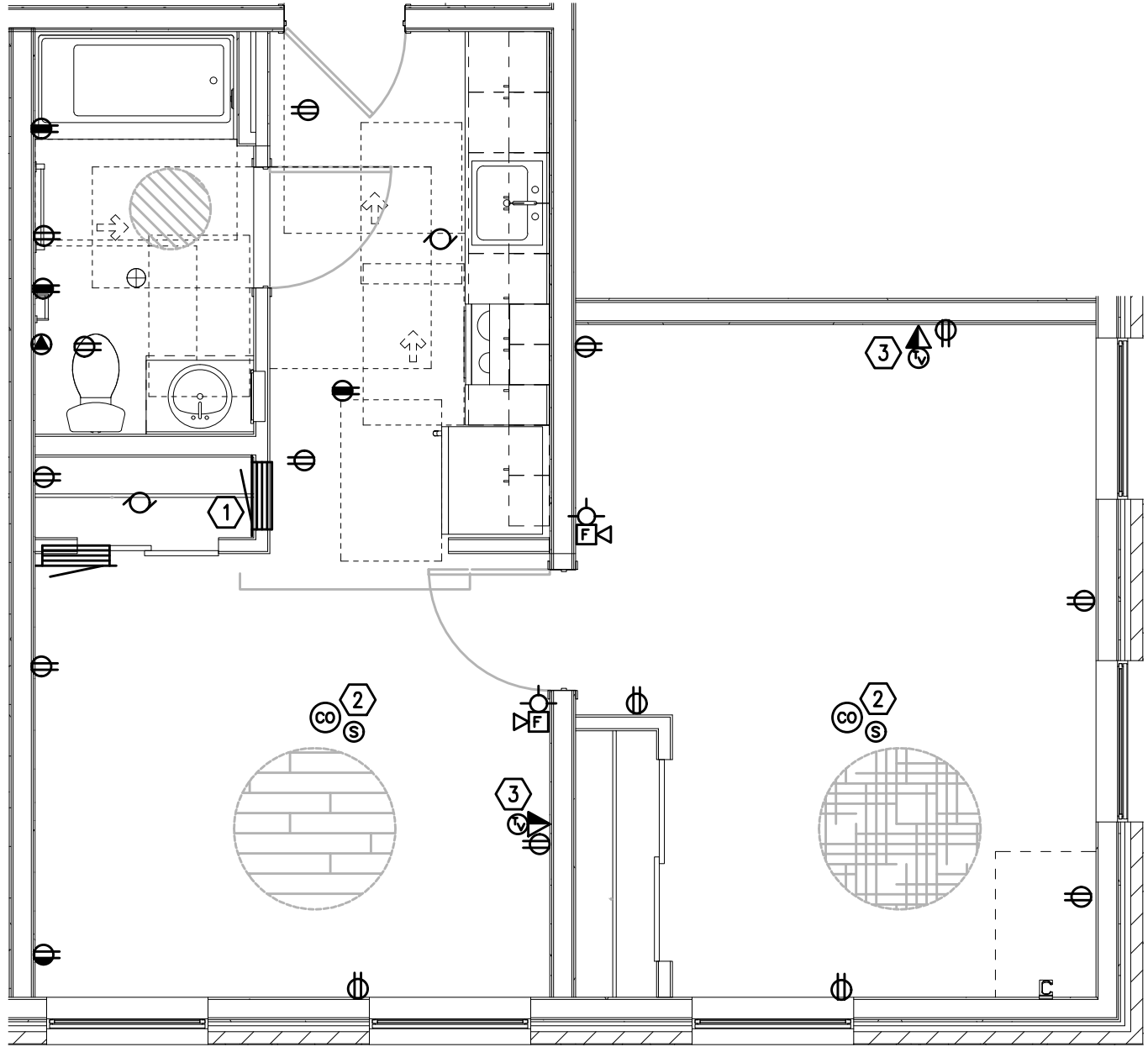
T4.01

NOTE: DRAWINGS ARE AT HALF SCALE WHEN PRINTED AT 11X17

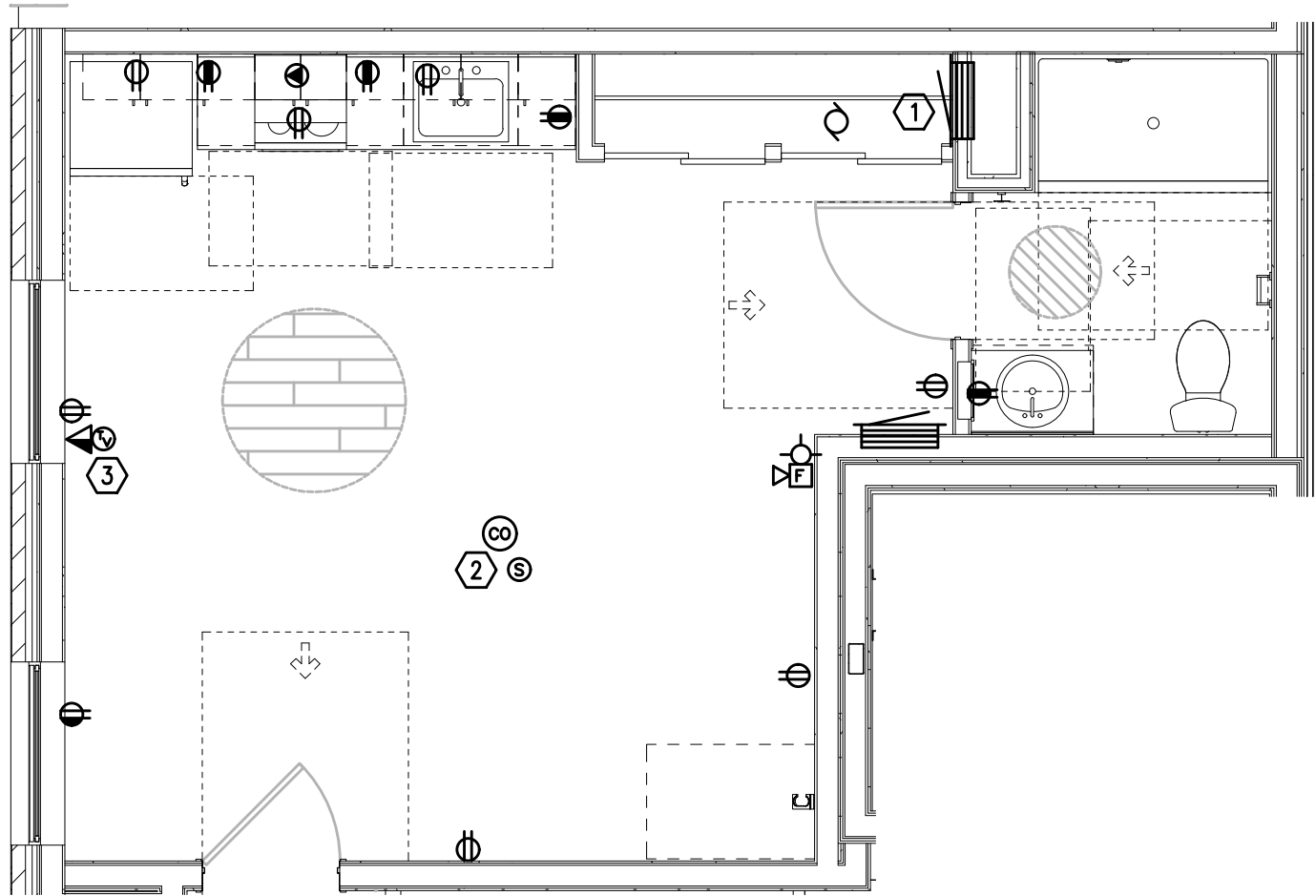
COPYRIGHT - CARLETON HART ARCHITECTURE DO NOT REPRODUCE WITHOUT PERMISSION



1  
UNIT TYPE 4  
T4.02 TYPICAL TELCOM PLAN  
SCALE: 1/4" = 1'-0"



2  
UNIT TYPE 5  
T4.02 TYPICAL TELCOM PLAN  
SCALE: 1/4" = 1'-0"



3  
UNIT TYPE 6  
T4.02 TYPICAL TELCOM PLAN  
SCALE: 1/4" = 1'-0"

- GENERAL NOTES:
- A. DRAWINGS ARE DIAGRAMMATICAL AND MAY NOT ACCURATELY REFLECT ACTUAL CONSTRUCTION CONDITIONS. THE CONTRACTOR SHALL BE RESPONSIBLE FOR COORDINATING THE INSTALLATION OF ALL EQUIPMENT THEY ARE INSTALLING, WITH ALL TRADES PRIOR TO AND DURING CONSTRUCTION.
  - B. FOR VOICE/DATA OUTLETS PROVIDE A SINGLE GANG MUD-RING WITH A 1" CONDUIT FROM THE TOP OF THE MUD-RING TO ACCESSIBLE CEILING SPACE. TERMINATE CONDUIT WITH END CONNECTORS AND THREAD ON PLASTIC BUSHING FOR CABLE PROTECTION. OUTLET SHALL BE AT THE SAME HEIGHT AS ADJACENT POWER OUTLET AND LESS THAN 18" SEPARATION. COORDINATE WITH ELECTRICAL.
  - C. COORDINATE ALL DEVICE LOCATIONS WITH LATEST ARCHITECTURAL INTERIOR ELEVATIONS TO VERIFY DEVICES WILL NOT BE OBSTRUCTED.
  - D. PROVIDE PULL STRING IN ALL CONDUITS FOR LATER USE.
  - E. ALL PENETRATIONS THROUGH FIREWALLS WILL NEED FIRESTOP OF THE APPROPRIATE RATING.

- KEYED NOTES:
- 1. SMART PANEL FOR UTILITY DEMARCATION WITHIN UNIT. PROVIDE RF TRANSPARENT PANEL.
  - 2. SMOKE AND CO DETECTOR CAN BE A SINGLE UNIT.
  - 3. (1) COAXIAL AND (2) CATEGORY CABLES AND OUTLETS PER FACEPLATE.

PRELIMINARY  
NOT FOR  
CONSTRUCTION



CARLETON HART ARCHITECTURE P.C.  
830 SW 10th Avenue #200 Portland Oregon 97206  
503.243.2252 | www.carletohcart.com

SUSAN EMMONS - SOUTH BUILDING  
1727 NW HOYT STREET, PORTLAND, OR  
NORTHWEST HOUSING ALTERNATIVES  
CONSTRUCTION DOCUMENT  
CHECK SET

TYPICAL ENLARGED  
UNIT PLANS

PROJECT NO.  
17004

07/06/2020

REVISIONS: #

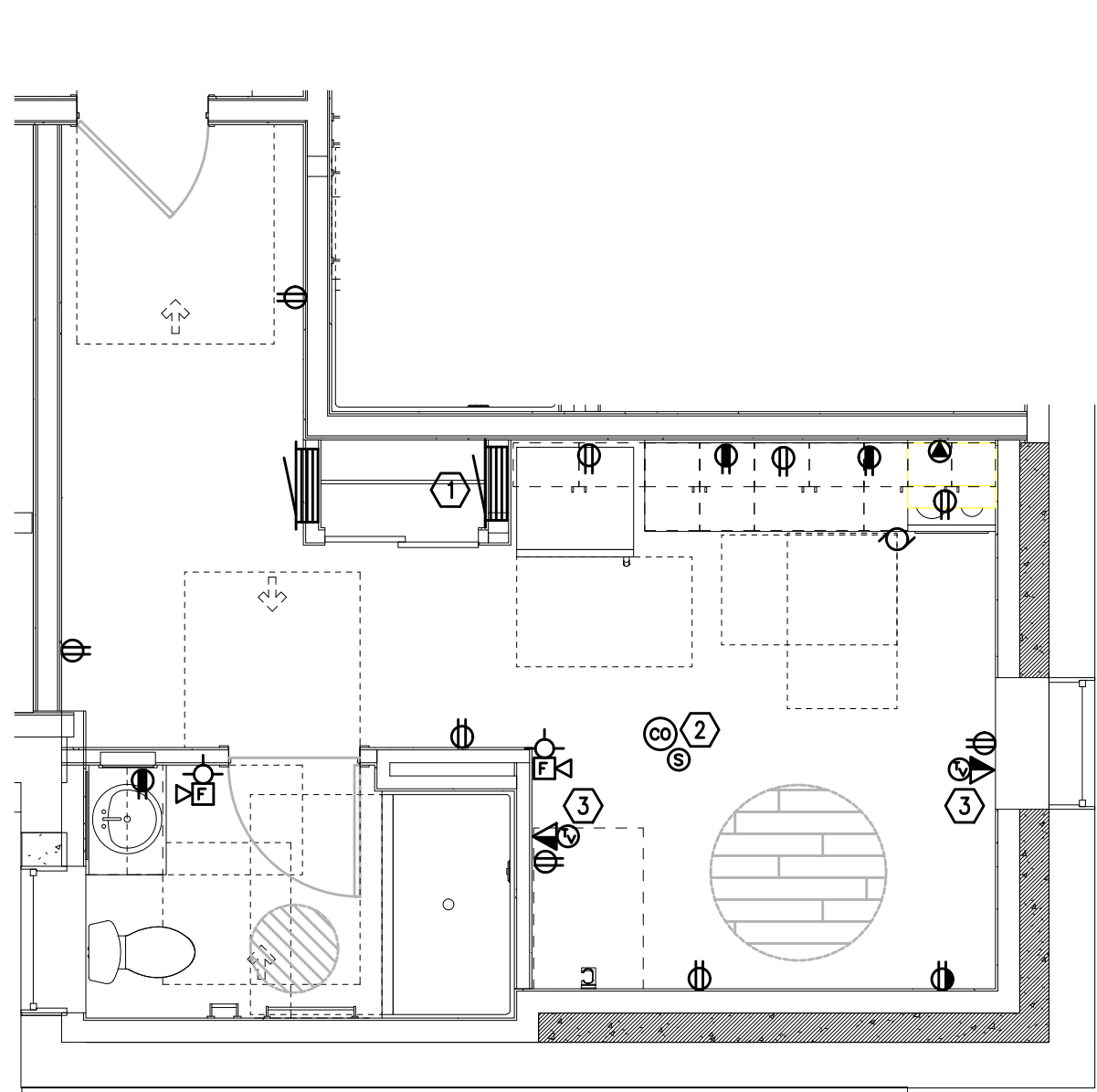
M  
F  
A  
INC. Consulting Engineers  
2007 S.E. Ash St.  
Portland, OR 97214  
PHN: (503) 234-0548  
FAX: (503) 234-0677  
WWW.MFIA-ENG.COM  
CONTACT: GARY ADOVNIK

T4.02

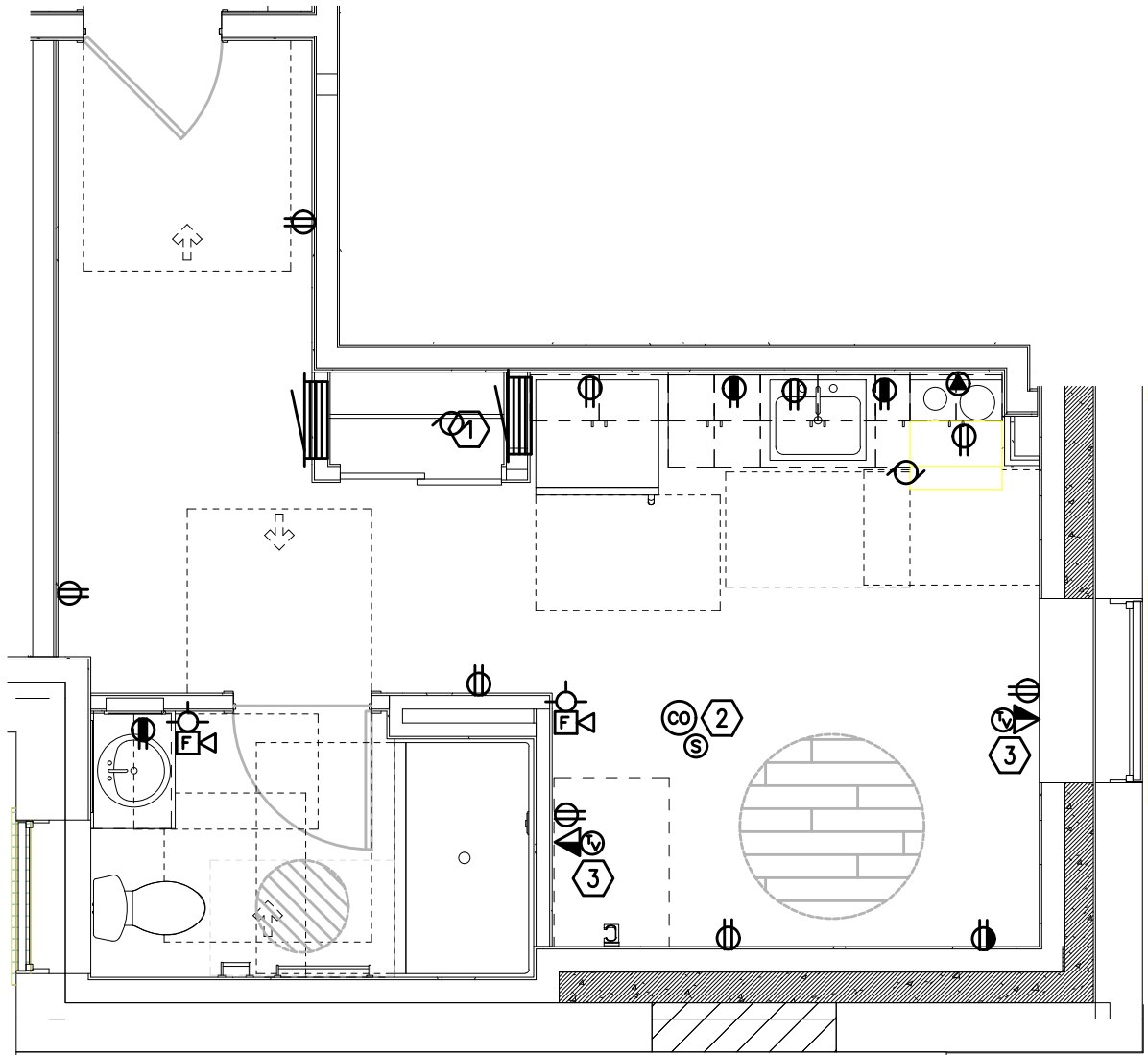
NOTE: DRAWINGS ARE AT HALF SCALE WHEN PRINTED AT 11X17

COPYRIGHT - CARLETON HART ARCHITECTURE DO NOT REPRODUCE WITHOUT PERMISSION

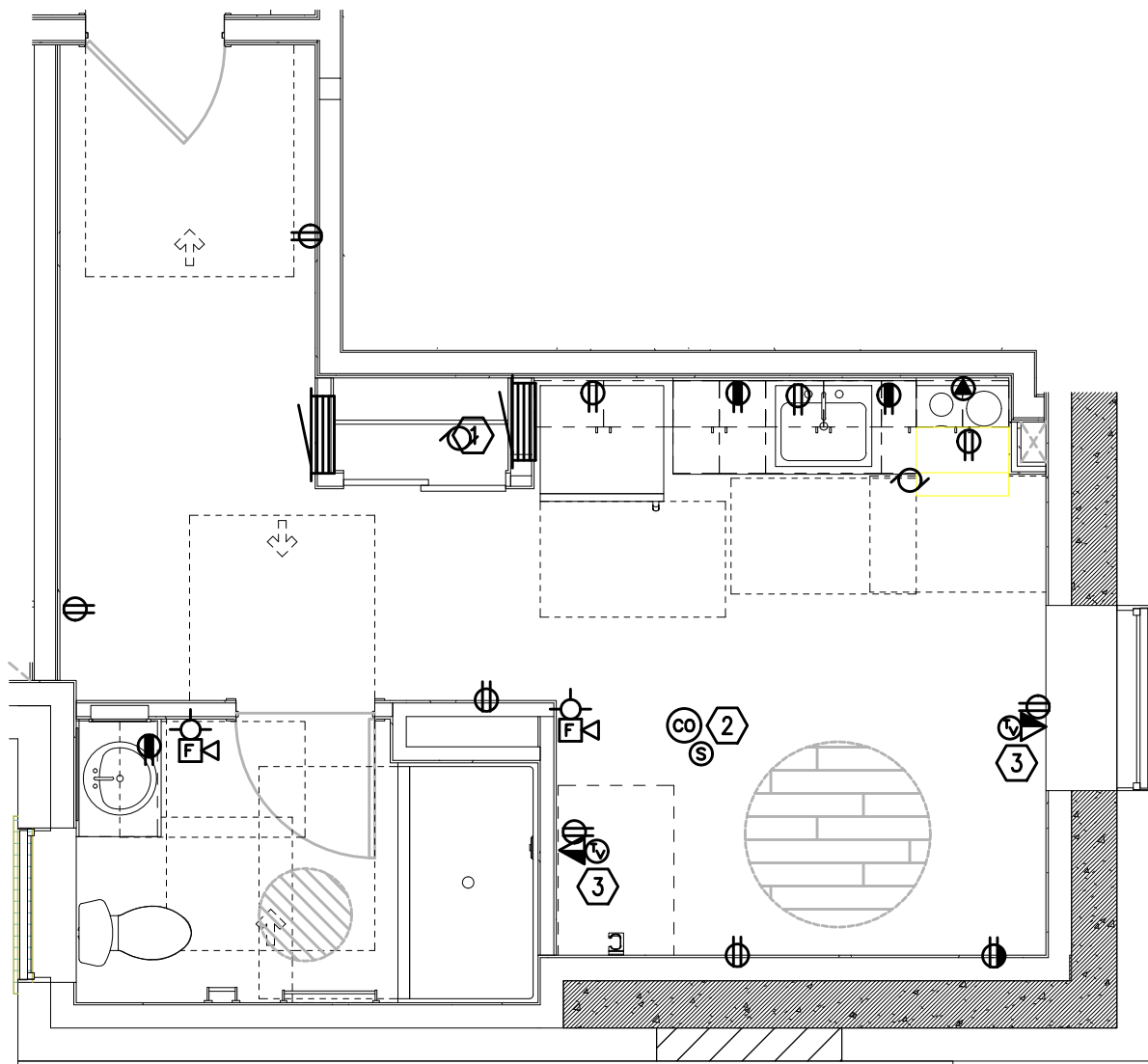




1  
T4.03 UNIT TYPE 7 ADA  
TYPICAL TELCOM PLAN  
SCALE: 1/4" = 1'-0"



2  
T4.03 UNIT TYPE 7A ADA  
TYPICAL TELCOM PLAN  
SCALE: 1/4" = 1'-0"



3  
T4.03 UNIT TYPE 7B ADA  
TYPICAL TELCOM PLAN  
SCALE: 1/4" = 1'-0"

- GENERAL NOTES:
- A. DRAWINGS ARE DIAGRAMMATICAL AND MAY NOT ACCURATELY REFLECT ACTUAL CONSTRUCTION CONDITIONS. THE CONTRACTOR SHALL BE RESPONSIBLE FOR COORDINATING THE INSTALLATION OF ALL EQUIPMENT THEY ARE INSTALLING, WITH ALL TRADES PRIOR TO AND DURING CONSTRUCTION.
  - B. FOR VOICE/DATA OUTLETS PROVIDE A SINGLE GANG MUD-RING WITH A 1" CONDUIT FROM THE TOP OF THE MUD-RING TO ACCESSIBLE CEILING SPACE. TERMINATE CONDUIT WITH END CONNECTORS AND THREAD ON PLASTIC BUSHING FOR CABLE PROTECTION. OUTLET SHALL BE AT THE SAME HEIGHT AS ADJACENT POWER OUTLET AND LESS THAN 18" SEPARATION. COORDINATE WITH ELECTRICAL.
  - C. COORDINATE ALL DEVICE LOCATIONS WITH LATEST ARCHITECTURAL INTERIOR ELEVATIONS TO VERIFY DEVICES WILL NOT BE OBSTRUCTED.
  - D. PROVIDE PULL STRING IN ALL CONDUITS FOR LATER USE.
  - E. ALL PENETRATIONS THROUGH FIREWALLS WILL NEED FIRESTOP OF THE APPROPRIATE RATING.

- KEYED NOTES:
- 1. SMART PANEL FOR UTILITY DEMARCATION WITHIN UNIT. PROVIDE RF TRANSPARENT PANEL.
  - 2. SMOKE AND CO DETECTOR CAN BE A SINGLE UNIT.
  - 3. (1) COAXIAL AND (2) CATEGORY CABLES AND OUTLETS PER FACEPLATE.

PRELIMINARY  
NOT FOR  
CONSTRUCTION

CARLETON HART ARCHITECTURE P.C.  
830 SW 10th Avenue #200 Portland Oregon 97205  
503.243.2252 | www.carlethonhart.com

SUSAN EMMONS - SOUTH BUILDING  
1727 NW HOYT STREET, PORTLAND, OR  
NORTHWEST HOUSING ALTERNATIVES  
CONSTRUCTION DOCUMENT  
CHECK SET

TYPICAL ENLARGED  
UNIT PLANS

PROJECT NO.  
17004

07/06/2020

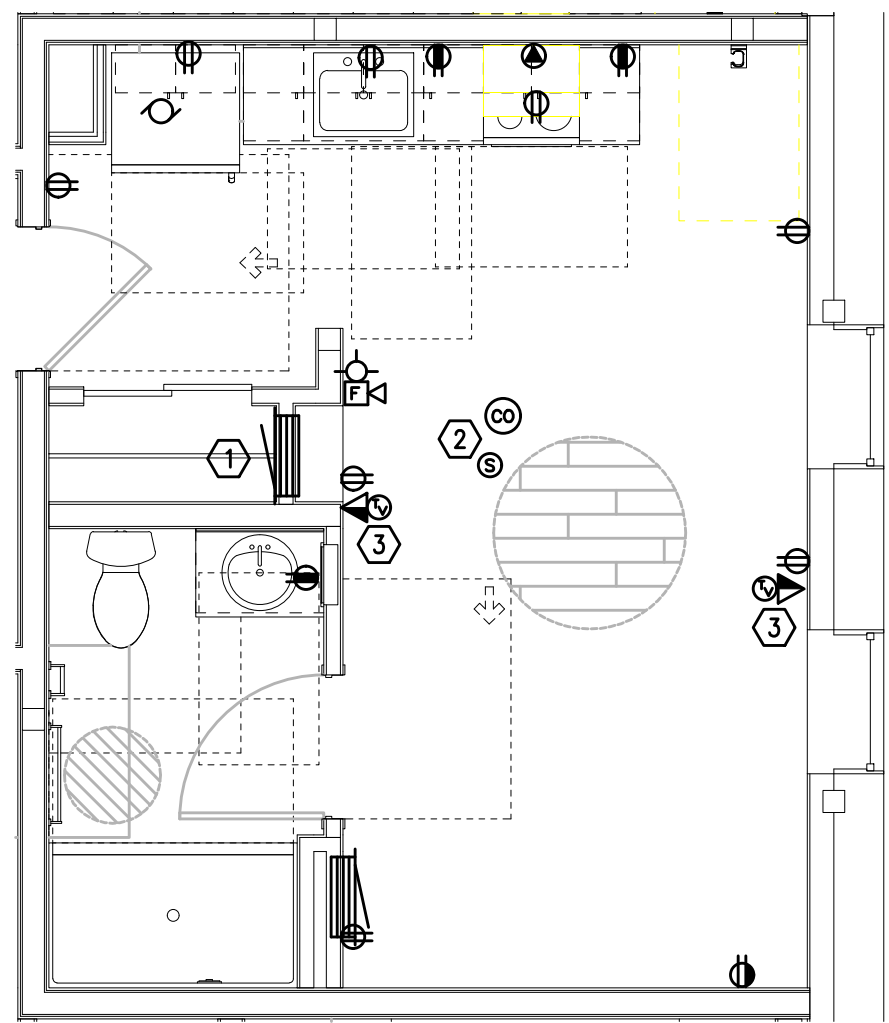
REVISIONS: #

M  
F  
A  
INC. Consulting Engineers  
2007 S.E. Ash St.  
Portland, OR 97214  
PHN: (503) 234-0548  
FAX: (503) 234-0877  
CONTACT: GARY ADOVNIK  
WWW.MFIA-ENG.COM

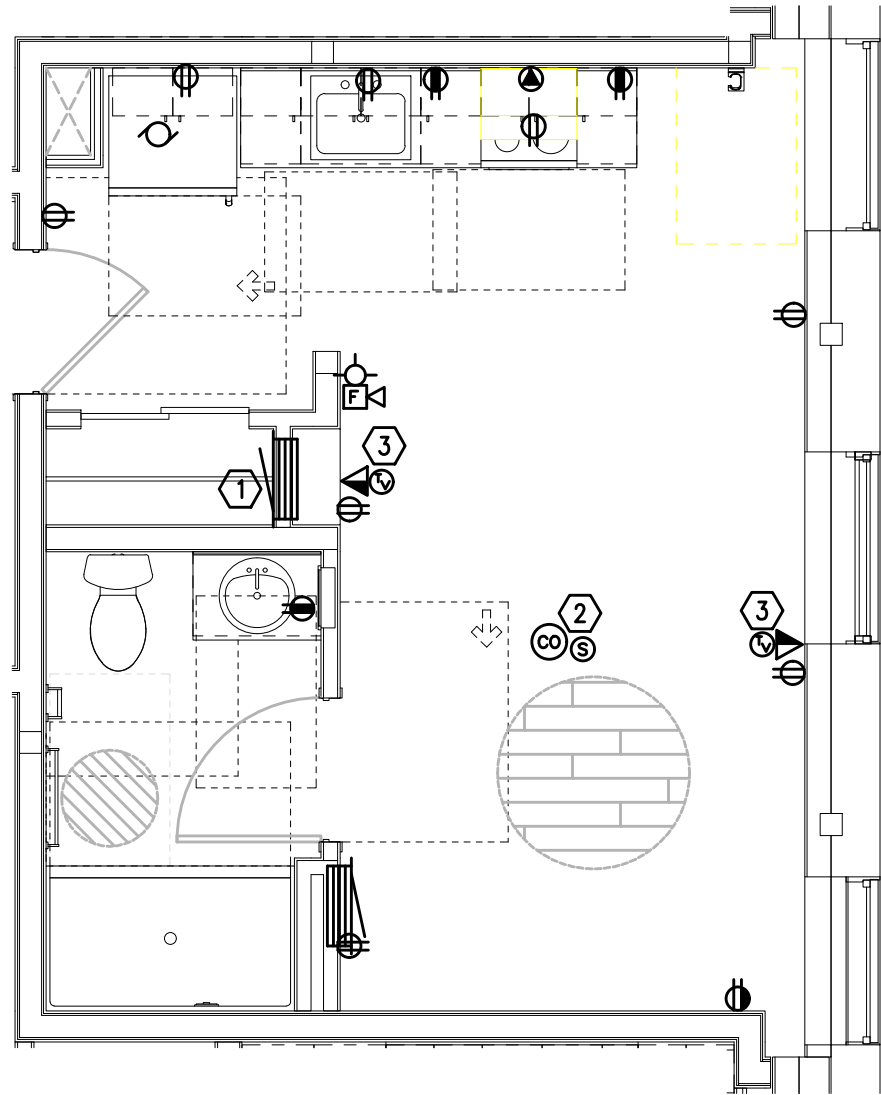
T4.03

NOTE: DRAWINGS ARE AT HALF SCALE WHEN PRINTED AT 11x17

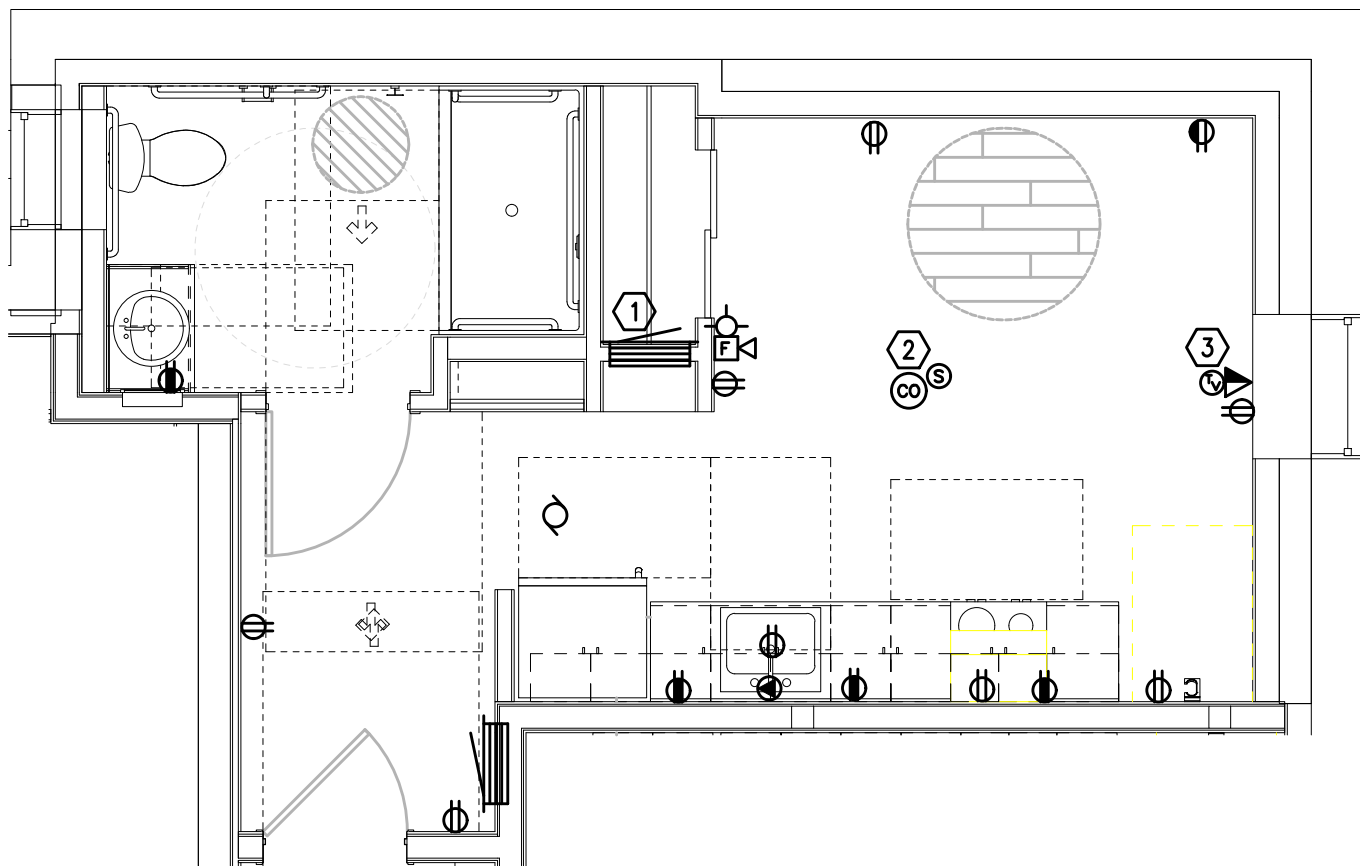
COPYRIGHT - CARLETON HART ARCHITECTURE DO NOT REPRODUCE WITHOUT PERMISSION



1  
T4.04 UNIT TYPE 8  
TYPICAL TELCOM PLAN  
SCALE: 1/4" = 1'-0"



2  
T4.04 UNIT TYPE 8A  
TYPICAL TELCOM PLAN  
SCALE: 1/4" = 1'-0"

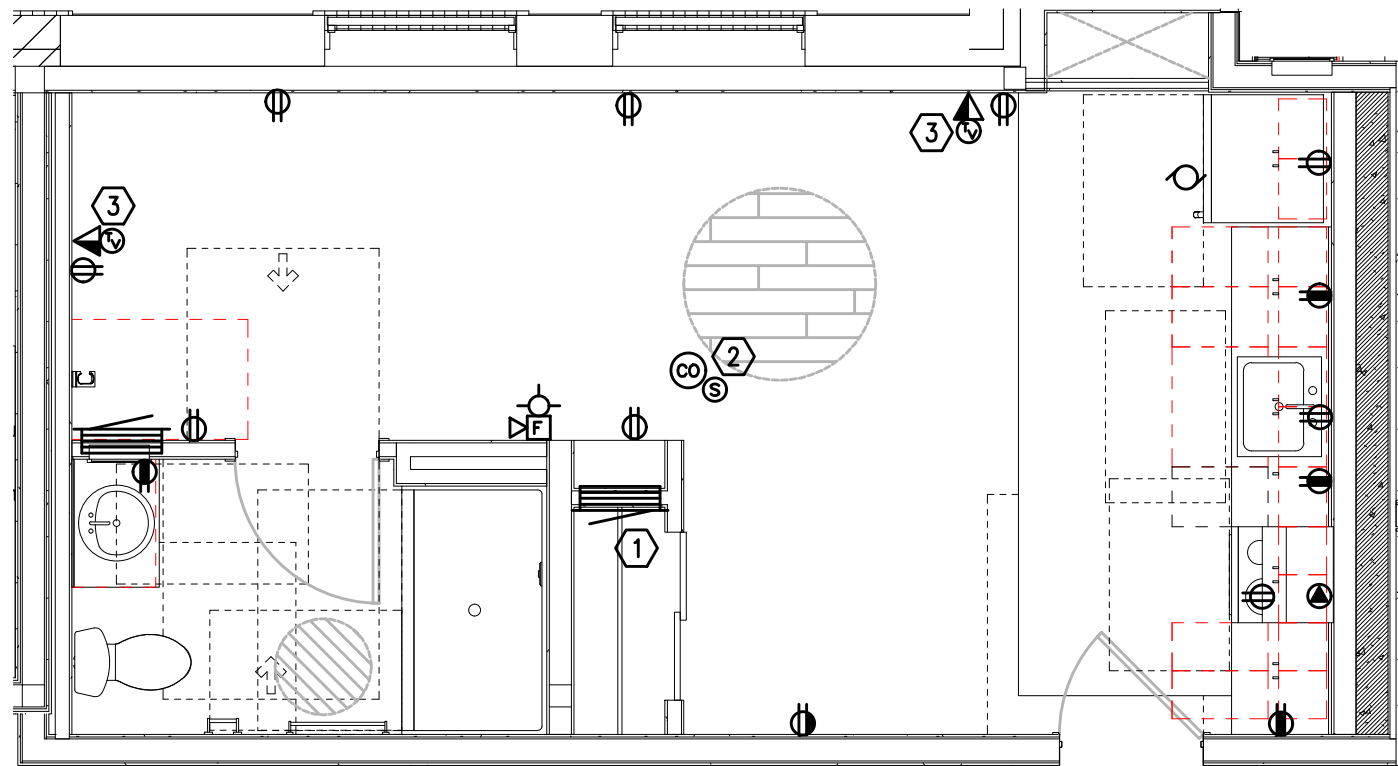


3  
T4.04 UNIT TYPE 9  
TYPICAL TELCOM PLAN  
SCALE: 1/4" = 1'-0"

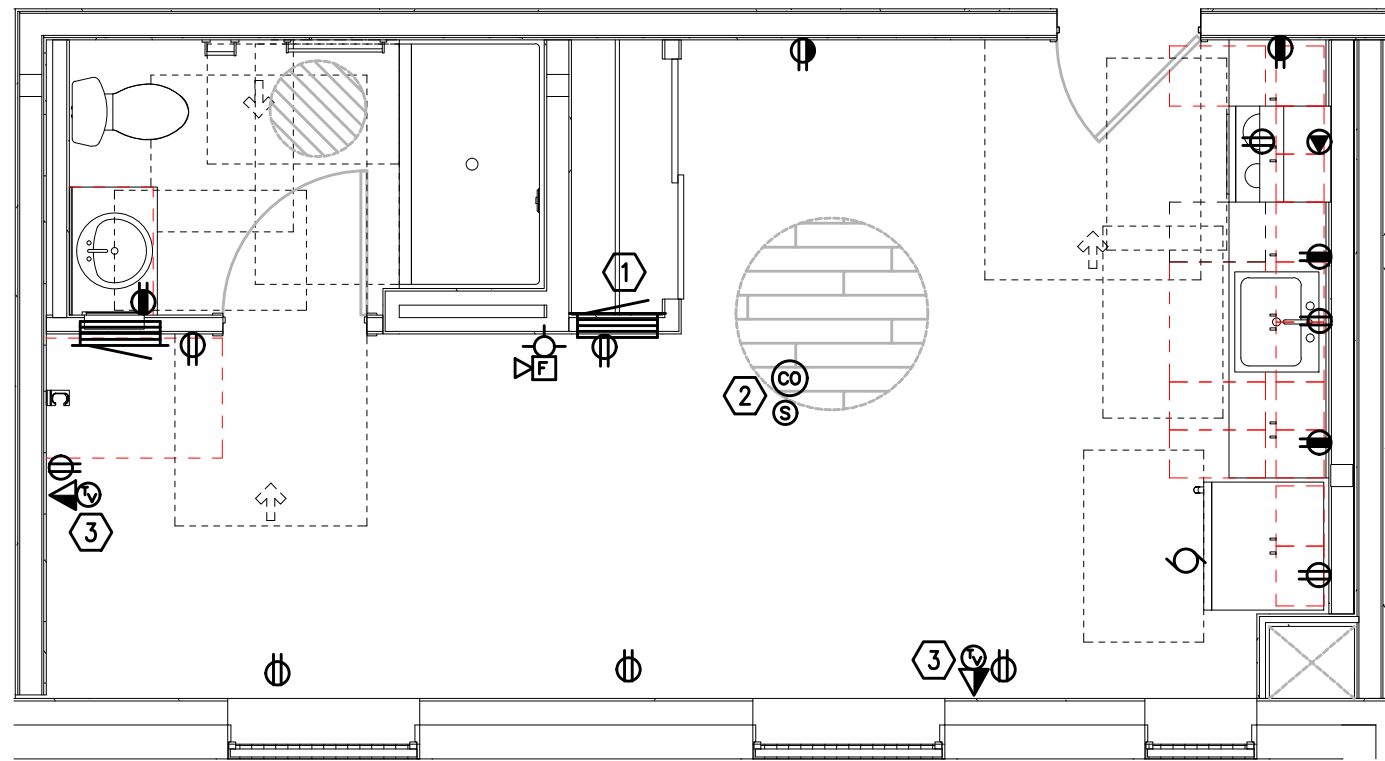
- GENERAL NOTES:
- A. DRAWINGS ARE DIAGRAMMATICAL AND MAY NOT ACCURATELY REFLECT ACTUAL CONSTRUCTION CONDITIONS. THE CONTRACTOR SHALL BE RESPONSIBLE FOR COORDINATING THE INSTALLATION OF ALL EQUIPMENT THEY ARE INSTALLING, WITH ALL TRADES PRIOR TO AND DURING CONSTRUCTION.
  - B. FOR VOICE/DATA OUTLETS PROVIDE A SINGLE GANG MUD-RING WITH A 1" CONDUIT FROM THE TOP OF THE MUD-RING TO ACCESSIBLE CEILING SPACE. TERMINATE CONDUIT WITH END CONNECTORS AND THREAD ON PLASTIC BUSHING FOR CABLE PROTECTION. OUTLET SHALL BE AT THE SAME HEIGHT AS ADJACENT POWER OUTLET AND LESS THAN 18" SEPARATION. COORDINATE WITH ELECTRICAL.
  - C. COORDINATE ALL DEVICE LOCATIONS WITH LATEST ARCHITECTURAL INTERIOR ELEVATIONS TO VERIFY DEVICES WILL NOT BE OBSTRUCTED.
  - D. PROVIDE PULL STRING IN ALL CONDUITS FOR LATER USE.
  - E. ALL PENETRATIONS THROUGH FIREWALLS WILL NEED FIRESTOP OF THE APPROPRIATE RATING.

- KEYED NOTES:
- 1. SMART PANEL FOR UTILITY DEMARCATION WITHIN UNIT. PROVIDE RF TRANSPARENT PANEL.
  - 2. SMOKE AND CO DETECTOR CAN BE A SINGLE UNIT.
  - 3. (1) COAXIAL AND (2) CATEGORY CABLES AND OUTLETS PER FACEPLATE.





UNIT TYPE 10  
T4.05 TYPICAL TELCOM PLAN  
SCALE: 1/4" = 1'-0"



UNIT TYPE 10A  
T4.05 TYPICAL TELCOM PLAN  
SCALE: 1/4" = 1'-0"

- GENERAL NOTES:
- A. DRAWINGS ARE DIAGRAMMATICAL AND MAY NOT ACCURATELY REFLECT ACTUAL CONSTRUCTION CONDITIONS. THE CONTRACTOR SHALL BE RESPONSIBLE FOR COORDINATING THE INSTALLATION OF ALL EQUIPMENT THEY ARE INSTALLING, WITH ALL TRADES PRIOR TO AND DURING CONSTRUCTION.
  - B. FOR VOICE/DATA OUTLETS PROVIDE A SINGLE GANG MUD-RING WITH A 1" CONDUIT FROM THE TOP OF THE MUD-RING TO ACCESSIBLE CEILING SPACE. TERMINATE CONDUIT WITH END CONNECTORS AND THREAD ON PLASTIC BUSHING FOR CABLE PROTECTION. OUTLET SHALL BE AT THE SAME HEIGHT AS ADJACENT POWER OUTLET AND LESS THAN 18" SEPARATION. COORDINATE WITH ELECTRICAL.
  - C. COORDINATE ALL DEVICE LOCATIONS WITH LATEST ARCHITECTURAL INTERIOR ELEVATIONS TO VERIFY DEVICES WILL NOT BE OBSTRUCTED.
  - D. PROVIDE PULL STRING IN ALL CONDUITS FOR LATER USE.
  - E. ALL PENETRATIONS THROUGH FIREWALLS WILL NEED FIRESTOP OF THE APPROPRIATE RATING.

- KEYED NOTES:
- 1. SMART PANEL FOR UTILITY DEMARCATION WITHIN UNIT. PROVIDE RF TRANSPARENT PANEL.
  - 2. SMOKE AND CO DETECTOR CAN BE A SINGLE UNIT.
  - 3. (1) COAXIAL AND (2) CATEGORY CABLES AND OUTLETS PER FACEPLATE.

PRELIMINARY  
NOT FOR  
CONSTRUCTION



CARLETON HART ARCHITECTURE P.C.  
830 SW 10th Avenue #200 Portland Oregon 97205  
503.243.2252 | www.carletonhart.com

SUSAN EMMONS - SOUTH BUILDING  
1727 NW HOYT STREET, PORTLAND, OR  
NORTHWEST HOUSING ALTERNATIVES  
CONSTRUCTION DOCUMENT  
CHECK SET

TYPICAL ENLARGED  
UNIT PLANS

PROJECT NO.  
17004

07/06/2020

REVISIONS: #

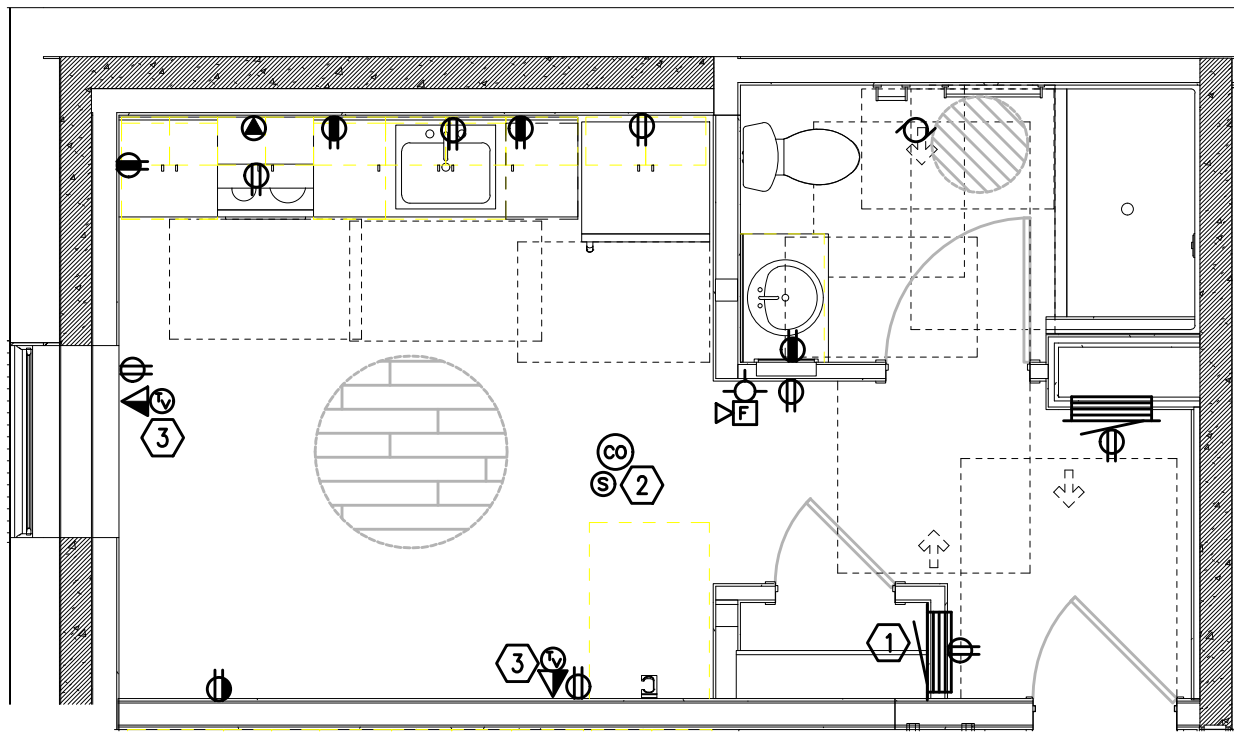
M Consulting Engineers  
2007 S.E. Ash St.  
Portland, OR 97214  
PHN: (503) 234-0548  
FAX: (503) 234-0677  
INC. WWW.MFIA-ENG.COM  
CONTACT: GARY ADOVNIK

T4.05

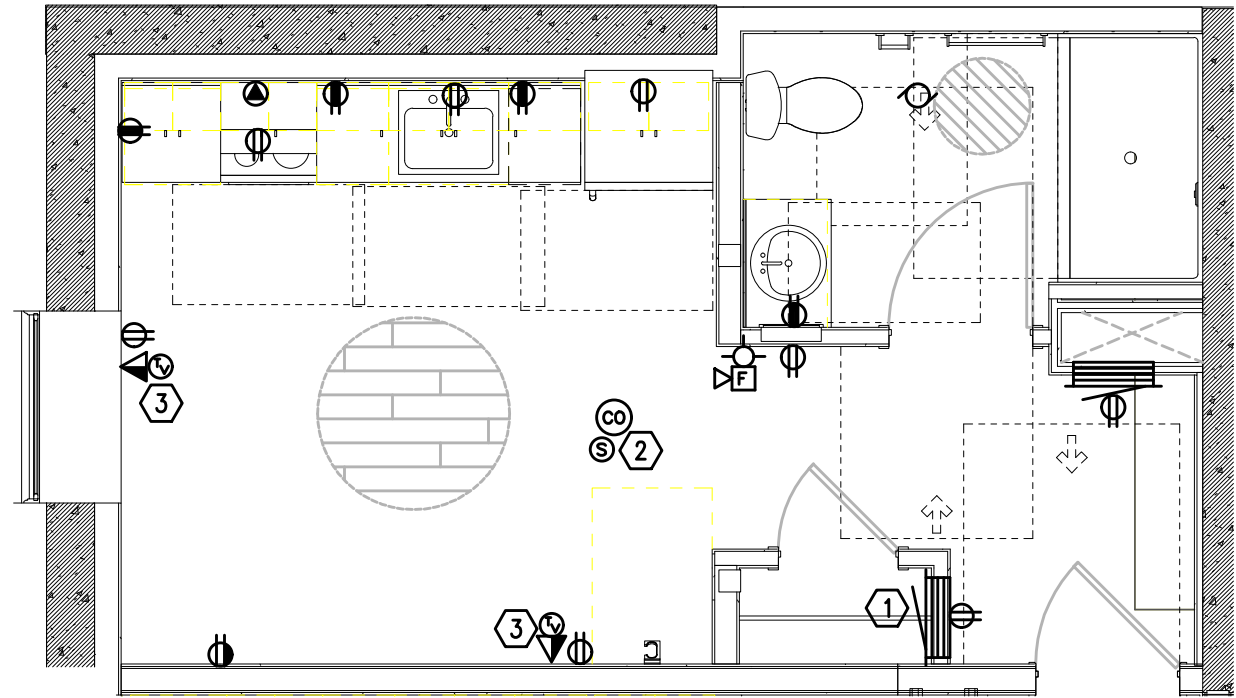
NOTE: DRAWINGS ARE AT HALF SCALE WHEN PRINTED AT 11X17

COPYRIGHT : CARLETON HART ARCHITECTURE DO NOT REPRODUCE WITHOUT PERMISSION

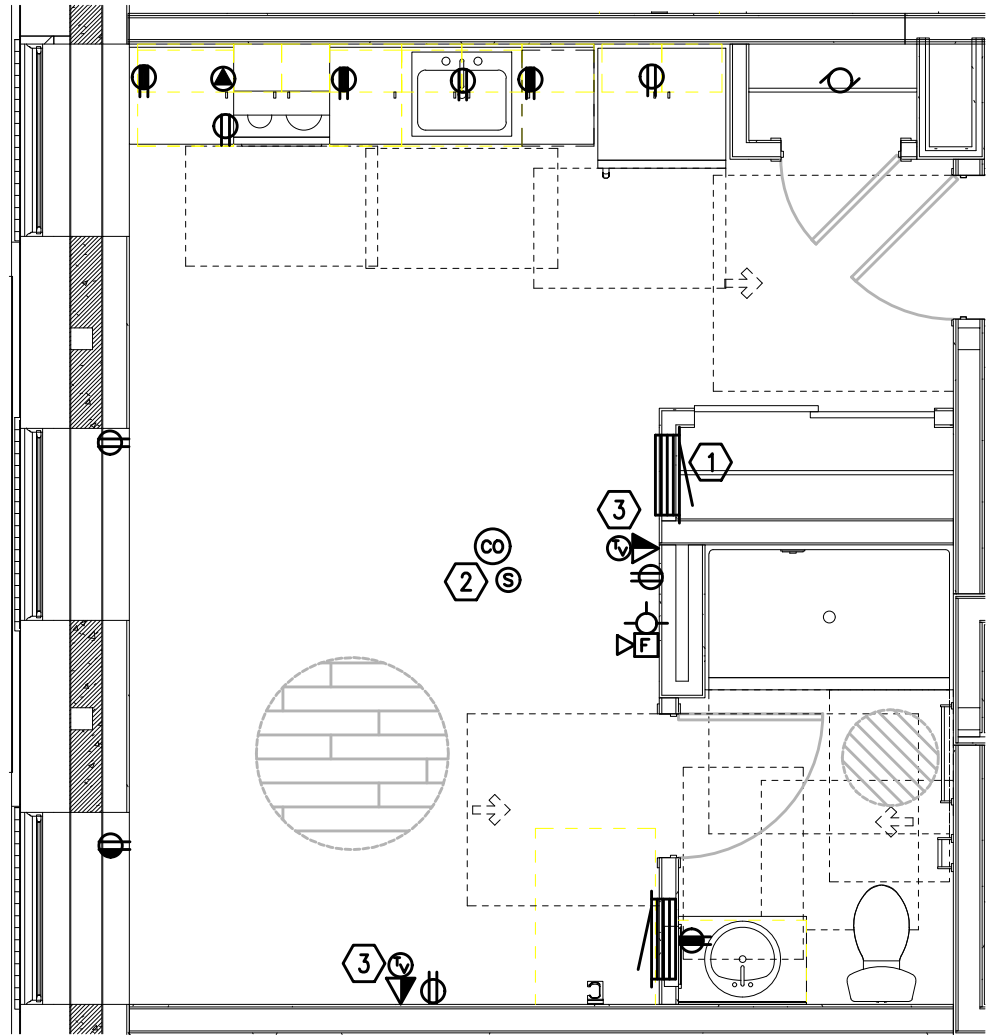




UNIT TYPE 11  
TYPICAL TELCOM PLAN  
1  
T4.06  
SCALE: 1/4" = 1'-0"



UNIT TYPE 11A  
TYPICAL TELCOM PLAN  
2  
T4.06  
SCALE: 1/4" = 1'-0"



UNIT TYPE 12  
TYPICAL TELCOM PLAN  
3  
T4.06  
SCALE: 1/4" = 1'-0"

GENERAL NOTES:

- A. DRAWINGS ARE DIAGRAMMATICAL AND MAY NOT ACCURATELY REFLECT ACTUAL CONSTRUCTION CONDITIONS. THE CONTRACTOR SHALL BE RESPONSIBLE FOR COORDINATING THE INSTALLATION OF ALL EQUIPMENT THEY ARE INSTALLING, WITH ALL TRADES PRIOR TO AND DURING CONSTRUCTION.
- B. FOR VOICE/DATA OUTLETS PROVIDE A SINGLE GANG MUD-RING WITH A 1" CONDUIT FROM THE TOP OF THE MUD-RING TO ACCESSIBLE CEILING SPACE. TERMINATE CONDUIT WITH END CONNECTORS AND THREAD ON PLASTIC BUSHING FOR CABLE PROTECTION. OUTLET SHALL BE AT THE SAME HEIGHT AS ADJACENT POWER OUTLET AND LESS THAN 18" SEPARATION. COORDINATE WITH ELECTRICAL.
- C. COORDINATE ALL DEVICE LOCATIONS WITH LATEST ARCHITECTURAL INTERIOR ELEVATIONS TO VERIFY DEVICES WILL NOT BE OBSTRUCTED.
- D. PROVIDE PULL STRING IN ALL CONDUITS FOR LATER USE.
- E. ALL PENETRATIONS THROUGH FIREWALLS WILL NEED FIRESTOP OF THE APPROPRIATE RATING.

KEYED NOTES:

- 1. SMART PANEL FOR UTILITY DEMARCATION WITHIN UNIT. PROVIDE RF TRANSPARENT PANEL.
- 2. SMOKE AND CO DETECTOR CAN BE A SINGLE UNIT.
- 3. (1) COAXIAL AND (2) CATEGORY CABLES AND OUTLETS PER FACEPLATE.

PRELIMINARY  
NOT FOR  
CONSTRUCTION

**CARLETON HART ARCHITECTURE P.C.**  
830 SW 10th Avenue #200 Portland Oregon 97206  
503.243.2252 | www.carlethonhart.com

**SUSAN EMMONS - SOUTH BUILDING**  
1727 NW HOYT STREET, PORTLAND, OR  
**NORTHWEST HOUSING ALTERNATIVES**  
CONSTRUCTION DOCUMENT  
CHECK SET

TYPICAL ENLARGED  
UNIT PLANS

PROJECT NO.  
17004

07/06/2020

REVISIONS: #

**MFI** Consulting Engineers  
2007 S.E. Ash St.  
Portland, OR 97214  
PHN: (503) 234-0548  
FAX: (503) 234-0677  
INC. WWW.MFI-ENG.COM  
CONTACT: GARY ADOVNIK

T4.06

NOTE: DRAWINGS ARE AT HALF SCALE WHEN PRINTED AT 11X17

COPYRIGHT - CARLETON HART ARCHITECTURE DO NOT REPRODUCE WITHOUT PERMISSION