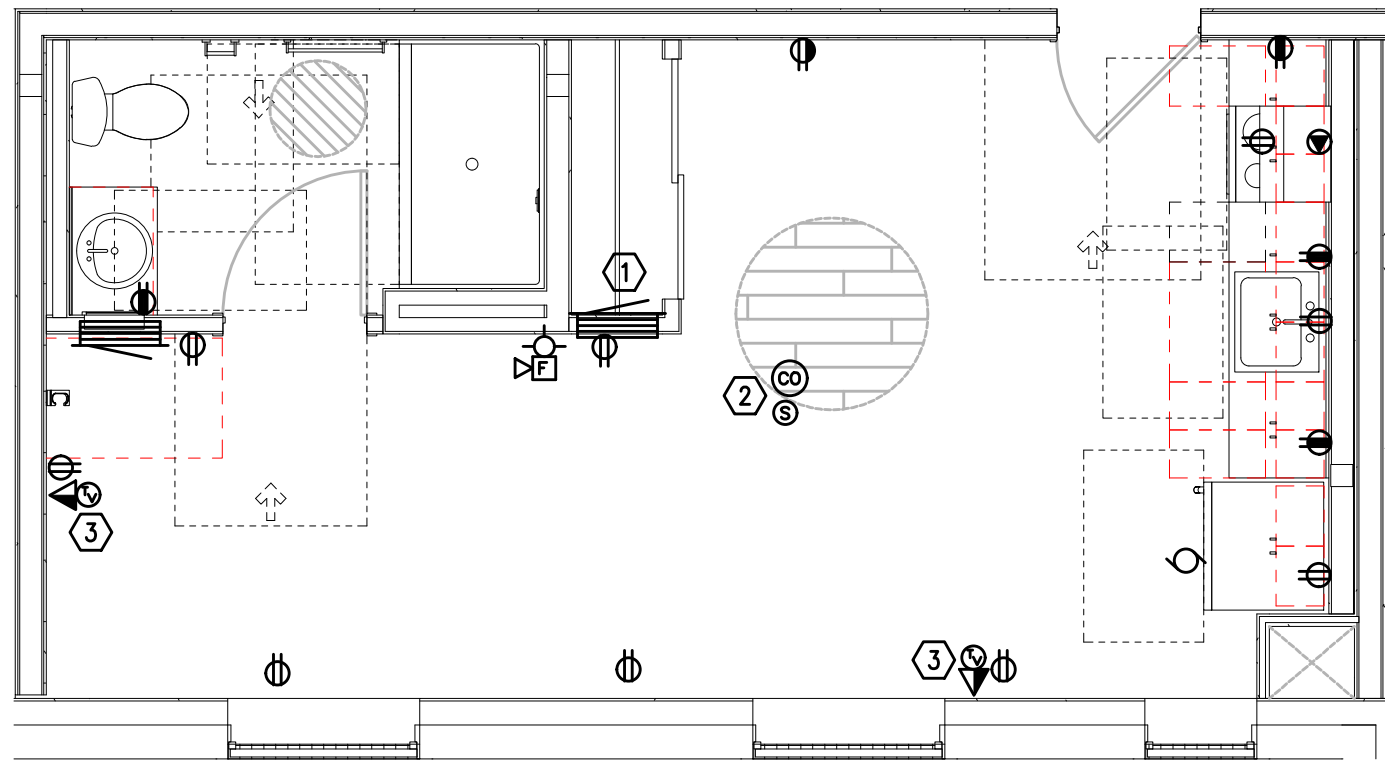


UNIT TYPE 10
T4.05 TYPICAL TELCOM PLAN
SCALE: 1/4" = 1'-0"



UNIT TYPE 10A
T4.05 TYPICAL TELCOM PLAN
SCALE: 1/4" = 1'-0"

- GENERAL NOTES:
- A. DRAWINGS ARE DIAGRAMMATICAL AND MAY NOT ACCURATELY REFLECT ACTUAL CONSTRUCTION CONDITIONS. THE CONTRACTOR SHALL BE RESPONSIBLE FOR COORDINATING THE INSTALLATION OF ALL EQUIPMENT THEY ARE INSTALLING, WITH ALL TRADES PRIOR TO AND DURING CONSTRUCTION.
 - B. FOR VOICE/DATA OUTLETS PROVIDE A SINGLE GANG MUD-RING WITH A 1" CONDUIT FROM THE TOP OF THE MUD-RING TO ACCESSIBLE CEILING SPACE. TERMINATE CONDUIT WITH END CONNECTORS AND THREAD ON PLASTIC BUSHING FOR CABLE PROTECTION. OUTLET SHALL BE AT THE SAME HEIGHT AS ADJACENT POWER OUTLET AND LESS THAN 18" SEPARATION. COORDINATE WITH ELECTRICAL.
 - C. COORDINATE ALL DEVICE LOCATIONS WITH LATEST ARCHITECTURAL INTERIOR ELEVATIONS TO VERIFY DEVICES WILL NOT BE OBSTRUCTED.
 - D. PROVIDE PULL STRING IN ALL CONDUITS FOR LATER USE.
 - E. ALL PENETRATIONS THROUGH FIREWALLS WILL NEED FIRESTOP OF THE APPROPRIATE RATING.

- KEYED NOTES:
- 1. SMART PANEL FOR UTILITY DEMARCATION WITHIN UNIT. PROVIDE RF TRANSPARENT PANEL.
 - 2. SMOKE AND CO DETECTOR CAN BE A SINGLE UNIT.
 - 3. (1) COAXIAL AND (2) CATEGORY CABLES AND OUTLETS PER FACEPLATE.

PRELIMINARY
NOT FOR
CONSTRUCTION



CARLETON HART ARCHITECTURE P.C.
830 SW 10th Avenue #200 Portland Oregon 97205
503.243.2252 | www.carlethonhart.com

SUSAN EMMONS - SOUTH BUILDING
1727 NW HOYT STREET, PORTLAND, OR
NORTHWEST HOUSING ALTERNATIVES
CONSTRUCTION DOCUMENT
CHECK SET

TYPICAL ENLARGED
UNIT PLANS

PROJECT NO.
17004

07/06/2020

REVISIONS: #

M Consulting Engineers
2007 S.E. Ash St.
Portland, OR 97214
PHN: (503) 234-0548
FAX: (503) 234-0677
INC. WWW.MFIA-ENG.COM
CONTACT: GARY ADOVNIK

NOTE: DRAWINGS ARE AT HALF SCALE WHEN PRINTED AT 11X17
COPYRIGHT : CARLETON HART ARCHITECTURE DO NOT REPRODUCE WITHOUT PERMISSION

T4.05