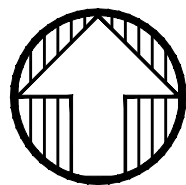
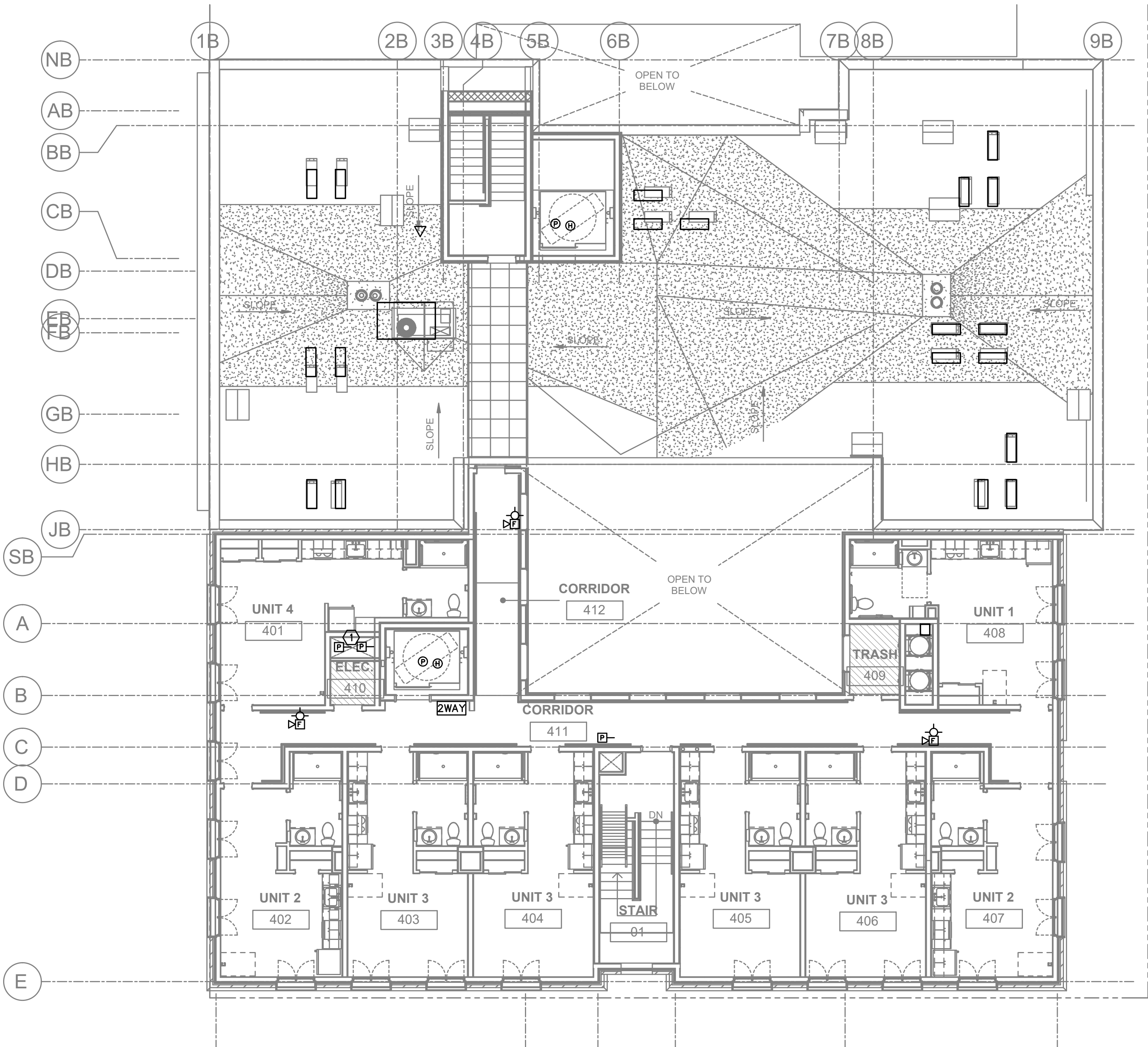


GENERAL NOTES:

- A. DRAWINGS ARE DIAGRAMMATICAL AND MAY NOT ACCURATELY REFLECT ACTUAL CONSTRUCTION CONDITIONS. THE CONTRACTOR SHALL BE RESPONSIBLE FOR COORDINATING THE INSTALLATION OF ALL EQUIPMENT THEY ARE INSTALLING, WITH ALL TRADES PRIOR TO AND DURING CONSTRUCTION.
- B. FOR VOICE/DATA OUTLETS PROVIDE A SINGLE GANG MUD-RING WITH A 1" CONDUIT FROM THE TOP OF THE MUD-RING TO ACCESSIBLE CEILING SPACE. TERMINATE CONDUIT WITH END CONNECTORS AND THREAD ON PLASTIC BUSHING FOR CABLE PROTECTION. OUTLET SHALL BE AT THE SAME HEIGHT AS ADJACENT POWER OUTLET AND LESS THAN 18" SEPARATION. COORDINATE WITH ELECTRICAL.
- C. REFER TO INTERIOR DECORATOR AND/OR ARCHITECTURAL DRAWINGS FOR DIMENSIONED LOCATION(S) AND ELEVATIONS OF FIXTURES & DEVICES. OTHER DEVICES SHOWN ON THE TECHNOLOGY PLANS AND NOT INDICATED ON THE DECORATOR'S OR ARCHITECT'S DRAWINGS, SHALL BE INSTALLED AT STANDARD MOUNTING HEIGHT AS INDICATED THE SYMBOL LIST.
- D. THERE SHALL BE NO SURFACE MOUNTED FIXTURES OR PATHWAYS (CONDUIT, ETC.) IN ANY PUBLICLY ACCESSIBLE SPACES, INCLUDING STAIRWELLS AND EXIT PASSAGEWAYS WITHOUT PRIOR APPROVAL BY OWNER AND ARCHITECT. ROUTE ALL PATHWAYS WITHIN STUD CAVITIES OR ABOVE FINISHED CEILINGS.
- E. ALL PENETRATIONS THROUGH FIREWALLS WILL NEED FIRESTOP OF THE APPROPRIATE RATING.

PLAN NOTES:

1. VERIFY EXACT COUNT AND LOCATIONS OF DUCT DETECTORS WITH MECHANICAL PLANS.
2. POINT OF ENTRY FOR COMMUNICATION UTILITIES.



1 FOURTH FLOOR TECHNOLOGY PLAN  
T3.04 SCALE: 1/8" = 1'-0"

FIRE ALARM AND DETECTION SYSTEM SHOWN ON PLAN(S) ARE FOR DESIGN INTENT ONLY. THIS IS A DEFERRED SUBMITTAL SYSTEM REQUIRING THE CONTRACTOR TO COMPLETE THE PERMIT READY DESIGN AND CALCULATIONS AS REQUIRED PER THE AUTHORITY HAVING JURISDICTION. VERIFY BUILDING OCCUPANCY TYPE AND OCCUPANT LOAD WITH ARCHITECTURAL PLANS.

**M** Consulting Engineers  
**E** 2007 S.E. Ash St.  
**A** Portland, OR 97214  
**INC.** PHN: (503) 234-0548  
FAX: (503) 234-0677  
CONTACT: GARY ADOVNIK

NOTE: DRAWINGS ARE AT HALF SCALE WHEN PRINTED AT 11X17  
COPYRIGHT: CARLETON HART ARCHITECTURE DO NOT REPRODUCE WITHOUT PERMISSION