

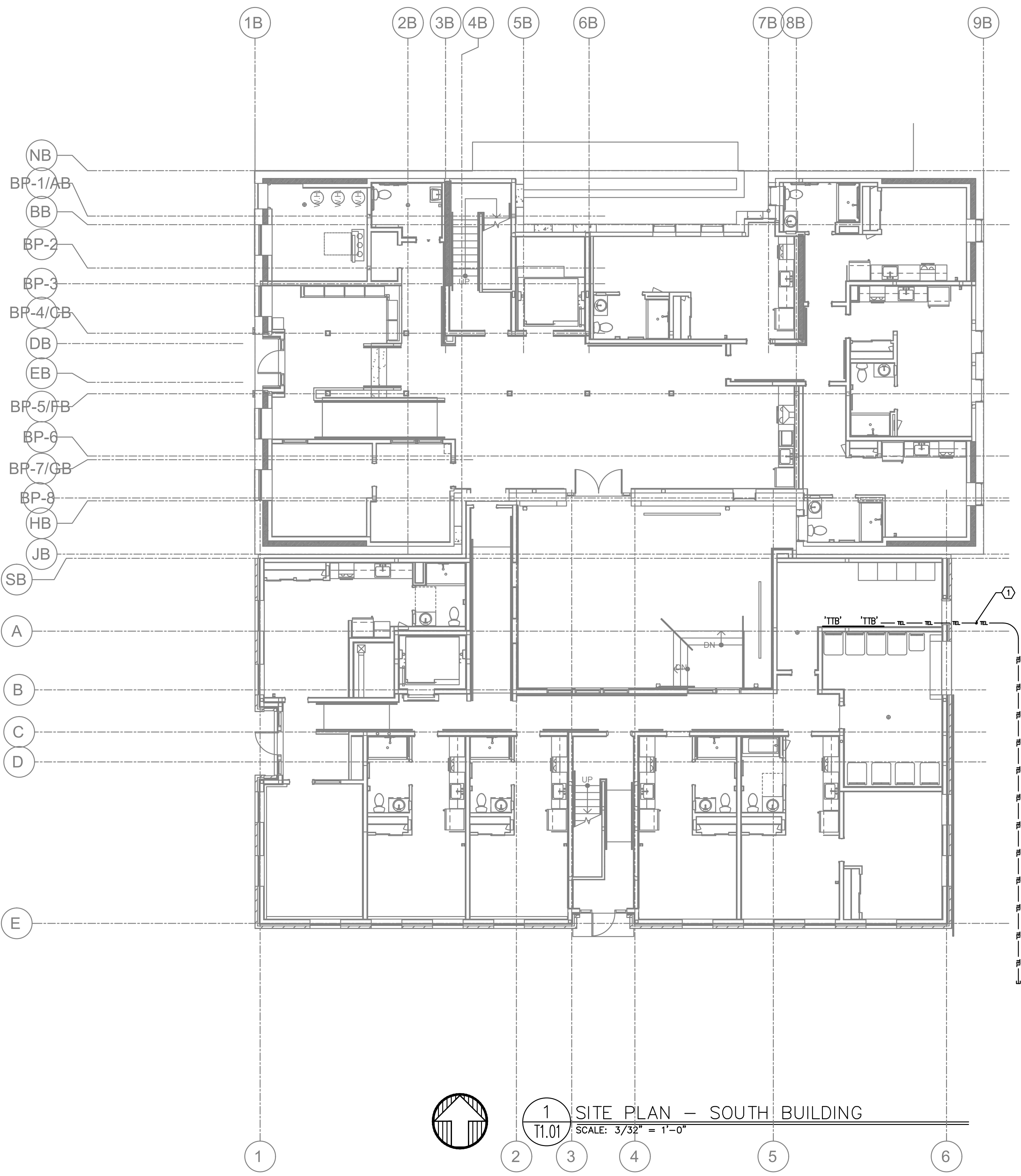
M
H
A
INC. Consulting Engineers
2007 S.E. Ash St.
Portland, OR 97214
PHN: (503) 234-0548
FAX: (503) 234-0677
WWW.MHAI-ENG.COM
CONTACT: GARY ADOVNIK

CARLETON HART ARCHITECTURE P.C.
830 SW 10th Avenue #200 Portland, OR 97205
503 243 2252
WWW.CARLETONHART.COM

SUSAN EMMONS - SOUTH BUILDING
610 NW 18TH AVENUE,
PORTLAND, OR
NORTHWEST HOUSING ALTERNATIVES
BID SET

TECHNOLOGY
SITE PLAN
PROJECT NO.
17004
03/12/2021
REVISIONS: A

COPYRIGHT CARLETON HART ARCHITECTURE DO NOT REPRODUCE WITHOUT PERMISSION



- GENERAL NOTES:
- A. ALL PLANS ARE CONSIDERED DIAGRAMMATICAL. THEREFORE ALL EQUIPMENT SIZES AND DEVICE LOCATIONS ARE APPROXIMATE AND SUBJECT TO FIELD CONDITIONS AND PRODUCT APPROVAL.
 - B. UTILITY SERVICE ENTRANCE CONDUIT SIZE AND ROUTING TO BE CONFIRMED WITH OWNER SELECTED UTILITIES.
 - C. COORDINATE WITH LOCAL UTILITY PROVIDER FOR DEPTH AND CONDUIT BEND REQUIREMENTS.
 - D. CONTRACTOR TO LOCATE ALL UNDERGROUND UTILITIES BEFORE TRENCHING. COORDINATE WITH CIVIL.
- GENERAL NOTES:
- 1. (2)2" TO PROPERTY LINE FOR UTILITY USE. COORDINATE WITH UTILITY FOR CONDUIT AND LOCATION, REQUIREMENTS MAY CHANGE AT ANY TIME.

FIRE ALARM AND DETECTION SYSTEM SHOWN ON PLAN(S) ARE FOR DESIGN INTENT ONLY. THIS IS A DEFERRED SUBMITTAL SYSTEM REQUIRING THE CONTRACTOR TO COMPLETE THE PERMIT READY DESIGN AND CALCULATIONS AS REQUIRED PER THE AUTHORITY HAVING JURISDICTION. VERIFY BUILDING OCCUPANCY TYPE AND OCCUPANT LOAD WITH ARCHITECTURAL PLANS.