

1 FIRST FLOOR POWER PLAN
E3.01 SCALE: 1/8" = 1'-0"

GENERAL POWER NOTES:

- A. ALL PLANS ARE CONSIDERED DIAGRAMMATICAL. THEREFORE ALL EQUIPMENT SIZES AND DEVICE LOCATIONS ARE APPROXIMATE AND SUBJECT TO FIELD CONDITIONS AND PRODUCT APPROVAL.
- B. ELECTRICAL CONTRACTOR TO PROVIDE THERMOSTATS NOT SUPPLIED BY MECHANICAL CONTRACTOR. CONSULT MECHANICAL PLANS FOR ADDITIONAL INFORMATION.
- C. ELECTRICAL CONTRACTOR SHALL PROVIDE INSTALLATION AND FINAL CONNECTION OF THERMOSTATS. CONSULT MECHANICAL CONTRACTOR FOR EXACT REQUIREMENTS PRIOR TO ROUGH IN.
- D. REFER TO INTERIOR DECORATOR AND/OR ARCHITECTURAL DRAWINGS FOR DIMENSIONED LOCATION(S) AND ELEVATIONS OF FIXTURES & DEVICES. OTHER DEVICES SHOWN ON THE ELECTRICAL PLANS AND NOT INDICATED ON THE DECORATOR'S OR ARCHITECT'S DRAWINGS, SHALL BE INSTALLED AT STANDARD MOUNTING HEIGHT AS INDICATED THE SYMBOL LIST.
- E. REFER TO ENLARGED TYPICAL UNIT PLANS (E4 SERIES SHEETS) FOR TYPICAL POWER & LIGHTING LAYOUTS FOR THE APARTMENT UNITS.
- F. ELECTRICAL EQUIPMENT SHOWN IN THE ELECTRICAL ROOMS IS APPROXIMATE, BASED ON TYPICAL PRODUCTS. CONTRACTOR SHALL VERIFY ANY SUBMITTED EQUIPMENT WILL FIT WITHIN THE SPACE PROVIDED, PRIOR TO PRODUCT SUBMITTAL REVIEW.
- G. ELECTRICAL CONTRACTOR SHALL COORDINATE WITH THE LOW VOLTAGE ('T' SERIES) PLANS, INCLUDING FIRE ALARM AND SYSTEMS INSTALLER, AND PROVIDE ROUGH IN AS NEEDED.
- H. GENERAL PURPOSE CONVENIENCE RECEPTACLES LOCATED ON THE BUILDING EXTERIOR, OTHER THAN INTERIOR COURT YARD, SHALL BE EQUIPPED WITH A LOCKING, WEATHER PROOF COVER.

KEYED NOTES:

- 1. GENERATOR DISCONNECT. SEE ONE-LINE DIAGRAM ON SHEET E1.11.
- 2. PROVIDE ONE 20A, 120V, 1P CIRCUIT FOR GENERATOR REMOTE ANNUNCIATOR. FED FROM PANEL E1.
- 3. PROVIDE ONE 20A,120V, 1P POWER CONNECTION FOR BUILDING SIGNS. CIRCUIT AS INDICATED VIA TIME CLOCK. MOUNT JUNCTION BOX TIGHT TO CEILING (AT BUILDING INTERIOR), COORDINATING EXACT LOCATION WITH SIGN INSTALLER'S SLEEVE AND PER ARCHITECT'S DIRECTION.
- 4. PROVIDE ONE 20A, 120V, 1P CIRCUIT FROM PANEL H1 FOR BUILDING ENTRY ACCESS CONTROL SYSTEM AND PROVIDE ROUGH IN AND WIRING TO ACCESS POINTS LOCATED ON PLANS. CONSULT WITH LOW VOLTAGE SYSTEMS INSTALLER AND THE 'T' SERIES SHEETS FOR ADDITIONAL INFORMATION.
- 5. VERIFY ELEVATOR EQUIPMENT LOCATION AND ELECTRICAL REQUIREMENTS WITH ARCHITECT AND/OR ELEVATOR PROVIDER.
- 6. PROVIDE ONE 20A, 120V, 1P CIRCUIT FROM PANEL H1 FOR AUTOMATIC DOOR OPENERS.
- 7. ELECTRICAL SERVICE METER ROOMS SHALL HAVE OUTWARD SWING DOORS EQUIPPED WITH PANIC HARDWARE. PROVIDE A KEY BOX AT THE EXTERIOR FOR ELECTRICAL UTILITIES' 24/7 ACCESS.
- 8. LOW VOLTAGE/COMMUNICATIONS SYSTEM DEMARCATION BOARD(S). COORDINATE LOCATIONS AND ELECTRICAL POWER REQUIREMENTS WITH THE TELECOM PLANS ('T' SERIES SHEETS) AND LOW VOLTAGE SYSTEMS INSTALLERS, AND PROVIDE ROUGH IN AND/OR FINAL ELECTRICAL POWER CONNECTIONS & DEVICES. REFER PANEL 'H1' SCHEDULE ON E1.12 FOR CIRCUITS.
- 9. DEDICATED POWER FOR WHEELCHAIR LIFT. VERIFY EXACT REQUIREMENTS WITH MANUFACTURER/INSTALLER PRIOR TO ROUGH IN.
- 10. DEDICATED 20A, 120V RECEPTACLE FOR PALLET JACK CHARGING.
- 11. PROVIDE ONE 30A, 208V, 1PH ELECTRICAL CIRCUIT FOR TRASH COMPACTOR. FEED FROM PANEL M1.
- 12. DEDICATED 20A, 120V RECEPTACLE FOR ELECTRIC BIKE CHARGING.
- 13. EMERGENCY LIGHTING INVERTER. EVENLITE LM 535, 120V, 1P, OR APPROVED OTHER. REFER TO PANEL H1 FOR CIRCUITING.
- 14. CONTINUOUS OPERATION EXHAUST FAN TO BE TIED INTO THE LIGHTING CIRCUIT FOR THIS AREA. AHEAD OF THE LIGHTING CONTROLS. CONSULT MECHANICAL PLANS AND/OR EQUIPMENT INSTALLER FOR EXACT POWER REQUIREMENTS PRIOR TO ROUGH IN.
- 15. REFER TO TYPICAL UNIT PLANS ON THE E4 SERIES SHEETS FOR ADDITIONAL INFORMATION REGARDING THE HVAC EQUIPMENT LOCATIONS AND CIRCUITING. COORDINATE WITH MECHANICAL INSTALLER.
- 16. COORDINATE WITH LANDSCAPE DESIGNER/INSTALLER FOR EXACT LOCATION AND POWER REQUIREMENTS OF ANY IRRIGATION CONTROLLER. PROVIDE POWER CONNECTION FROM PANEL 'M1' AND SLEEVE TO GRADE.
- 17. PROVIDE ALL CIRCUITING FOR LAUNDRY MACHINES FROM PANEL 'L1'.
- 18. ROOF TOP GFCI RECEPTACLES TO BE PROVIDED WITHIN A 25FT RADIUS OF ALL MECHANICAL EQUIPMENT PER CODE. LOCATIONS SHOWN REPRESENT THIS. FINAL LOCATION(S) SHALL BE FIELD DETERMINED AND INSTALLED PER CODE.
- 19. REFER TO 'T' SERIES SHEETS AND COORDINATE POWER REQUIREMENTS FOR THE FACP PANEL AND DEMARCATION BOARDS.
- 20. ELECTRICAL CONTRACTOR TO CONSULT THE MECHANICAL PLANS AND COORDINATE WITH THE MECHANICAL INSTALLER FOR ANY POWER CONNECTIONS NEEDED FOR DAMPERS. PROVIDE ANY ROUGH IN AND/OR FINAL ELECTRICAL CONNECTIONS.

M Consulting Engineers
2007 S.E. Ash St.
Portland, OR 97214
PHN: (503) 234-0548
FAX: (503) 234-0677
INC. WWW.MFIA-ENG.COM
CONTACT: DENISE TAYLOR



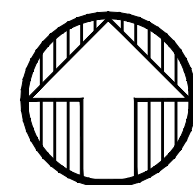
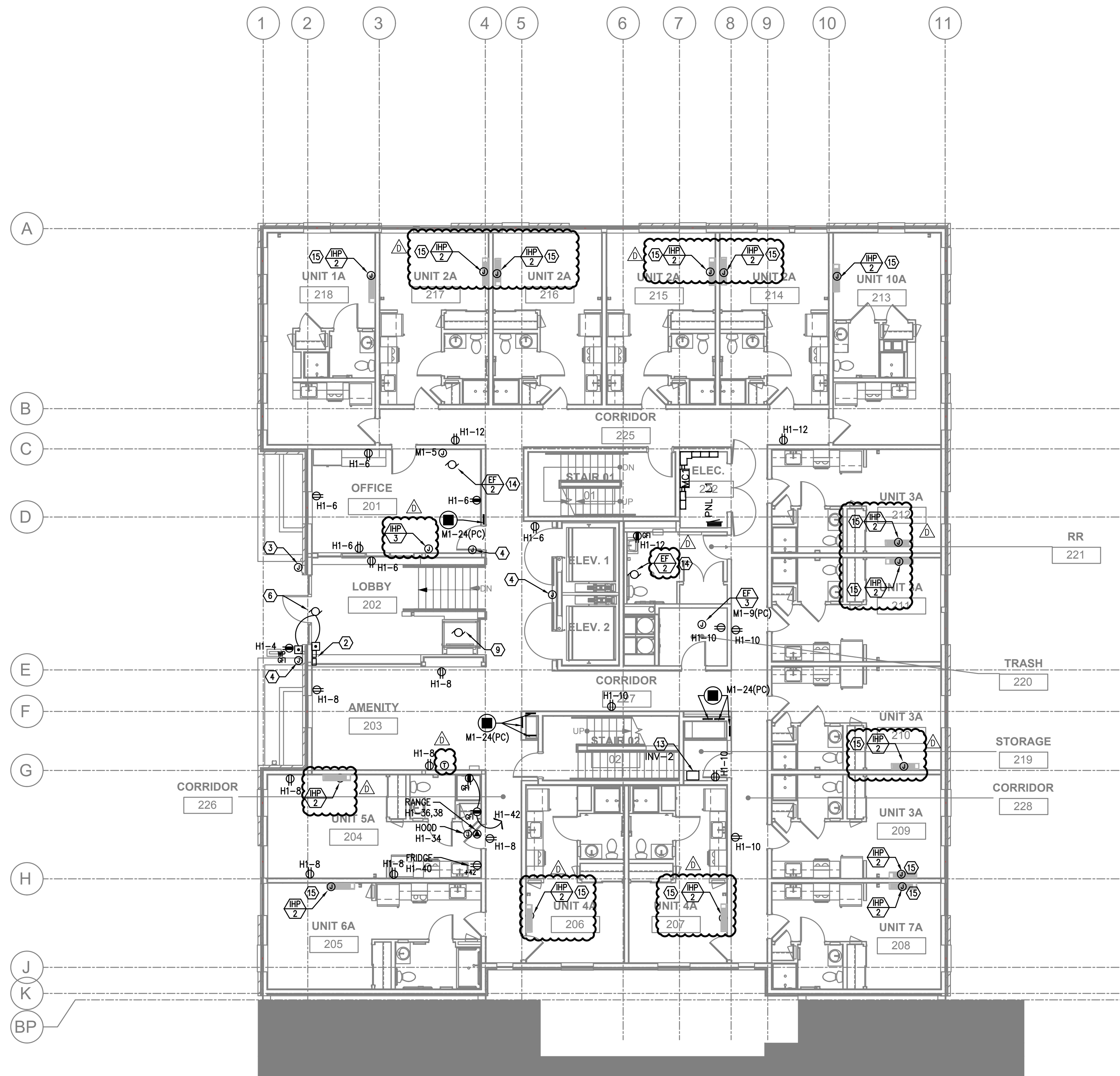
CARLETON HART ARCHITECTURE P.C.
830 SW 10th Avenue #200 Portland, Oregon 97205
503 243 2252
www.carletonhart.com

SUSAN EMMONS - NORTH BLDG
624 NW 18TH AVENUE
PORTLAND, OR
NORTHWEST HOUSING ALTERNATIVES
PERMIT SET

FIRST FLOOR POWER PLAN

PROJECT NO.
17004
11/04/2020

REVISIONS:
CITY PLAN REVIEW 02.26.2021
PLAN REVIEW 03.12.2021



1
E3.02

SECOND FLOOR POWER PLAN

SCALE: 1/8" = 1'-0"

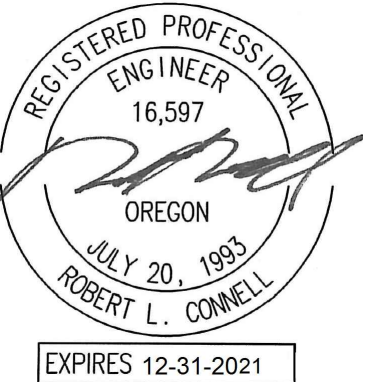
GENERAL POWER NOTES:

- ALL PLANS ARE CONSIDERED DIAGRAMMATICAL. THEREFORE ALL EQUIPMENT SIZES AND DEVICE LOCATIONS ARE APPROXIMATE AND SUBJECT TO FIELD CONDITIONS AND PRODUCT APPROVAL.
- ELECTRICAL CONTRACTOR TO PROVIDE THERMOSTATS NOT SUPPLIED BY MECHANICAL CONTRACTOR. CONSULT MECHANICAL PLANS FOR ADDITIONAL INFORMATION.
- ELECTRICAL CONTRACTOR SHALL PROVIDE INSTALLATION AND FINAL CONNECTION OF THERMOSTATS. CONSULT MECHANICAL CONTRACTOR FOR EXACT REQUIREMENTS PRIOR TO ROUGH IN.
- REFER TO INTERIOR DECORATOR AND/OR ARCHITECTURAL DRAWINGS FOR DIMENSIONED LOCATION(S) AND ELEVATIONS OF FIXTURES & DEVICES. OTHER DEVICES SHOWN ON THE ELECTRICAL PLANS AND NOT INDICATED ON THE DECORATOR'S OR ARCHITECT'S DRAWINGS, SHALL BE INSTALLED AT STANDARD MOUNTING HEIGHT AS INDICATED THE SYMBOL LIST.
- REFER TO ENLARGED TYPICAL UNIT PLANS (E4 SERIES SHEETS) FOR TYPICAL POWER & LIGHTING LAYOUTS FOR THE APARTMENT UNITS.
- ELECTRICAL EQUIPMENT SHOWN IN THE ELECTRICAL ROOMS IS APPROXIMATE. BASED ON TYPICAL PRODUCTS. CONTRACTOR SHALL VERIFY ANY SUBMITTED EQUIPMENT WILL FIT WITHIN THE SPACE PROVIDED. PRIOR TO PRODUCT SUBMITTAL REVIEW.
- ELECTRICAL CONTRACTOR SHALL COORDINATE WITH THE LOW VOLTAGE ("T" SERIES) PLANS, INCLUDING FIRE ALARM AND SYSTEMS INSTALLER, AND PROVIDE ROUGH IN AS NEEDED.
- GENERAL PURPOSE CONVENIENCE RECEPTACLES LOCATED ON THE BUILDING EXTERIOR, OTHER THAN INTERIOR COURT YARD, SHALL BE EQUIPPED WITH A LOCKING, WEATHER PROOF COVER.

KEYED NOTES:

- GENERATOR DISCONNECT. SEE ONE-LINE DIAGRAM ON SHEET E1.11.
- PROVIDE ONE 20A, 120V, 1P CIRCUIT FOR GENERATOR REMOTE ANNUNCIATOR. FED FROM PANEL E1.
- PROVIDE ONE 20A, 120V, 1P POWER CONNECTION FOR BUILDING SIGNS. CIRCUIT AS INDICATED VIA TIME CLOCK. MOUNT JUNCTION BOX TIGHT TO CEILING (AT BUILDING INTERIOR), COORDINATING EXACT LOCATION WITH SIGN INSTALLER'S SLEEVE AND PER ARCHITECT'S DIRECTION.
- PROVIDE ONE 20A, 120V, 1P CIRCUIT FROM PANEL H1 FOR BUILDING ENTRY ACCESS CONTROL SYSTEM AND PROVIDE ROUGH IN AND WIRING TO ACCESS POINTS LOCATED ON PLANS. CONSULT WITH LOW VOLTAGE SYSTEMS INSTALLER AND THE "T" SERIES SHEETS FOR ADDITIONAL INFORMATION.
- VERIFY ELEVATOR EQUIPMENT LOCATION AND ELECTRICAL REQUIREMENTS WITH ARCHITECT AND/OR ELEVATOR PROVIDER.
- PROVIDE ONE 20A, 120V, 1P CIRCUIT FROM PANEL H1 FOR AUTOMATIC DOOR OPENERS.
- ELECTRICAL SERVICE METER ROOMS SHALL HAVE OUTWARD SWING DOORS EQUIPPED WITH PANIC HARDWARE. PROVIDE A KEY BOX AT THE EXTERIOR FOR ELECTRICAL UTILITIES' 24/7 ACCESS.
- LOW VOLTAGE/COMMUNICATIONS SYSTEM DEMARCATION BOARD(S). COORDINATE LOCATIONS AND ELECTRICAL POWER REQUIREMENTS WITH THE TELECOM PLANS ("T" SERIES SHEETS) AND LOW VOLTAGE SYSTEMS INSTALLERS. AND PROVIDE ROUGH IN AND/OR FINAL ELECTRICAL POWER CONNECTIONS & DEVICES. REFER PANEL "H1" SCHEDULE ON E1.12 FOR CIRCUITS.
- DEDICATED POWER FOR WHEELCHAIR LIFT. VERIFY EXACT REQUIREMENTS WITH MANUFACTURER/INSTALLER PRIOR TO ROUGH IN.
- DEDICATED 20A, 120V RECEPTACLE FOR PALLET JACK CHARGING.
- PROVIDE ONE 30A, 208V, 1PH ELECTRICAL CIRCUIT FOR TRASH COMPACTOR. FEED FROM PANEL M1.
- DEDICATED 20A, 120V RECEPTACLE FOR ELECTRIC BIKE CHARGING.
- EMERGENCY LIGHTING INVERTER. EVENLITE LM 535, 120V, 1P, OR APPROVED OTHER. REFER TO PANEL H1 FOR CIRCUITING.
- CONTINUOUS OPERATION EXHAUST FAN TO BE TIED INTO THE LIGHTING CIRCUIT FOR THIS AREA, AHEAD OF THE LIGHTING CONTROLS. CONSULT MECHANICAL PLANS AND/OR EQUIPMENT INSTALLER FOR EXACT POWER REQUIREMENTS PRIOR TO ROUGH IN.
- REFER TO TYPICAL UNIT PLANS ON THE E4 SERIES SHEETS FOR ADDITIONAL INFORMATION REGARDING THE HVAC EQUIPMENT LOCATIONS AND CIRCUITING. COORDINATE WITH MECHANICAL INSTALLER.
- COORDINATE WITH LANDSCAPE DESIGNER/INSTALLER FOR EXACT LOCATION AND POWER REQUIREMENTS OF ANY IRRIGATION CONTROLLER. PROVIDE POWER CONNECTION FROM PANEL "M1" AND SLEEVE TO GRADE.
- PROVIDE ALL CIRCUITING FOR LAUNDRY MACHINES FROM PANEL "L1".
- ROOF TOP GFCI RECEPTACLES TO BE PROVIDED WITHIN A 25FT RADIUS OF ALL MECHANICAL EQUIPMENT PER CODE. LOCATIONS SHOWN REPRESENT THIS. FINAL LOCATION(S) SHALL BE FIELD DETERMINED AND INSTALLED PER CODE.
- REFER TO "T" SERIES SHEETS AND COORDINATE POWER REQUIREMENTS FOR THE FACP PANEL AND DEMARCATION BOARDS.
- ELECTRICAL CONTRACTOR TO CONSULT THE MECHANICAL PLANS AND COORDINATE WITH THE MECHANICAL INSTALLER FOR ANY POWER CONNECTIONS NEEDED FOR DAMPERS. PROVIDE ANY ROUGH IN AND/OR FINAL ELECTRICAL CONNECTIONS.

MFI Consulting Engineers
2007 S.E. Ash St.
Portland, OR 97214
PHN: (503) 234-0548
FAX: (503) 234-0677
INC. WWW.MFIA-ENG.COM
CONTACT: DENISE TAYLOR



CARLETON HART ARCHITECTURE P.C.
830 SW 10th Avenue #200 Portland, Oregon 97205
503 243 2252 www.carletonhart.com

SUSAN EMMONS - NORTH BLDG
624 NW 18TH AVENUE
PORTLAND, OR

NORTHWEST HOUSING ALTERNATIVES

PERMIT SET

SECOND FLOOR POWER PLAN

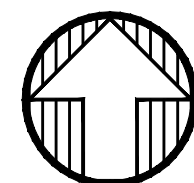
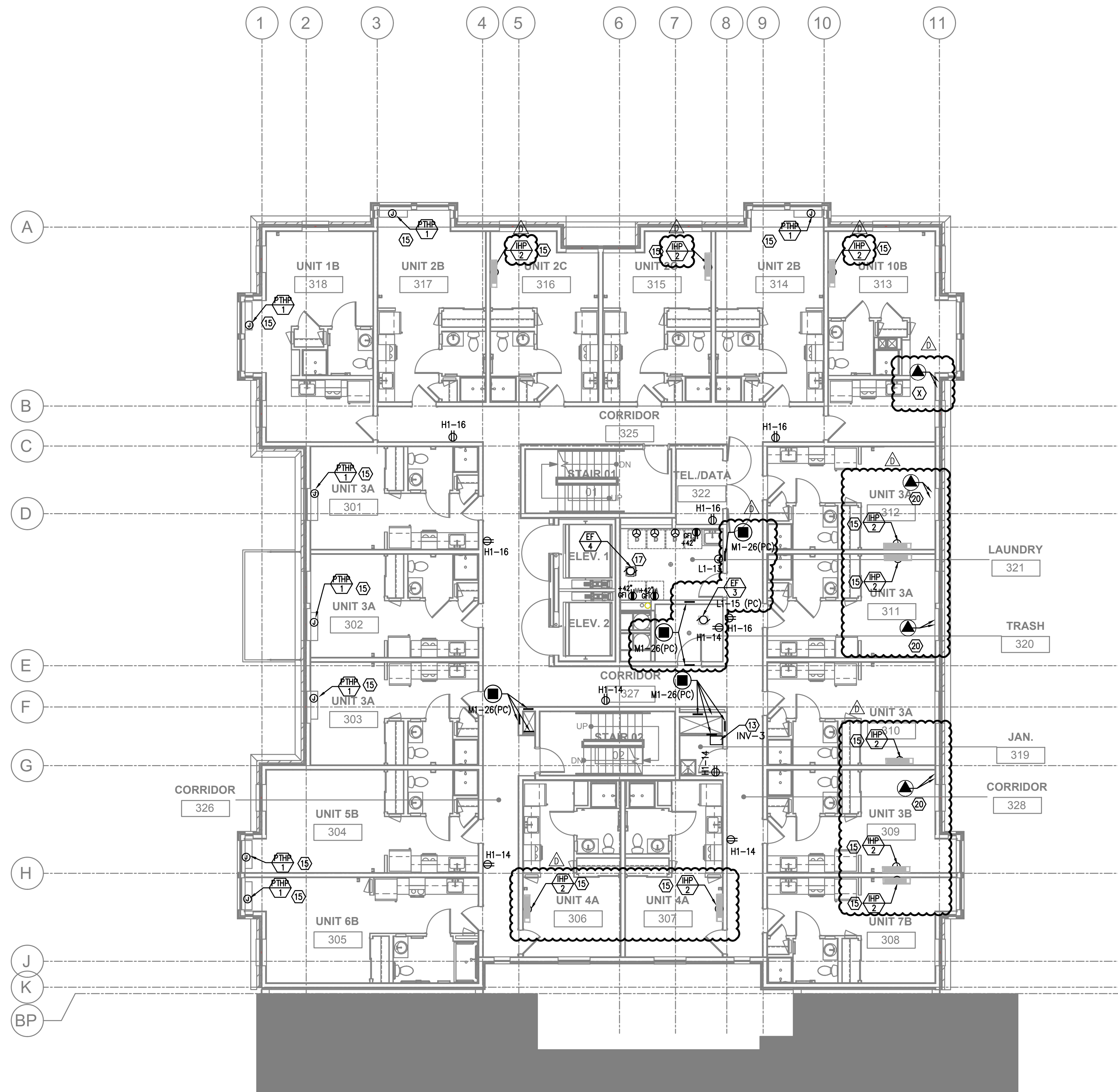
PROJECT NO.
17004
11/04/2020

REVISIONS:

△ CITY PLAN REVIEW 02.28.2021
△ PLAN REVIEW 03.12.2021

NOTE: DRAWINGS ARE AT HALF SCALE WHEN PRINTED AT 11X17
COPYRIGHT - CARLETON HART ARCHITECTURE DO NOT REPRODUCE WITHOUT PERMISSION

E3.02



1 THIRD FLOOR POWER PLAN
E3.03
SCALE: 1/8" = 1'-0"

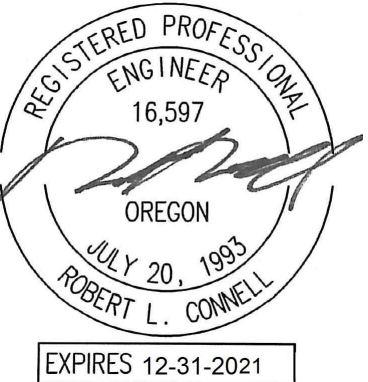
GENERAL POWER NOTES:

- ALL PLANS ARE CONSIDERED DIAGRAMMATICAL. THEREFORE ALL EQUIPMENT SIZES AND DEVICE LOCATIONS ARE APPROXIMATE AND SUBJECT TO FIELD CONDITIONS AND PRODUCT APPROVAL.
- ELECTRICAL CONTRACTOR TO PROVIDE THERMOSTATS NOT SUPPLIED BY MECHANICAL CONTRACTOR. CONSULT MECHANICAL PLANS FOR ADDITIONAL INFORMATION.
- ELECTRICAL CONTRACTOR SHALL PROVIDE INSTALLATION AND FINAL CONNECTION OF THERMOSTATS. CONSULT MECHANICAL CONTRACTOR FOR EXACT REQUIREMENTS PRIOR TO ROUGH IN.
- REFER TO INTERIOR DECORATOR AND/OR ARCHITECTURAL DRAWINGS FOR DIMENSIONED LOCATION(S) AND ELEVATIONS OF FIXTURES & DEVICES. OTHER DEVICES SHOWN ON THE ELECTRICAL PLANS AND NOT INDICATED ON THE DECORATOR'S OR ARCHITECT'S DRAWINGS, SHALL BE INSTALLED AT STANDARD MOUNTING HEIGHT AS INDICATED THE SYMBOL LIST.
- REFER TO ENLARGED TYPICAL UNIT PLANS (E4 SERIES SHEETS) FOR TYPICAL POWER & LIGHTING LAYOUTS FOR THE APARTMENT UNITS.
- ELECTRICAL EQUIPMENT SHOWN IN THE ELECTRICAL ROOMS IS APPROXIMATE, BASED ON TYPICAL PRODUCTS. CONTRACTOR SHALL VERIFY ANY SUBMITTED EQUIPMENT WILL FIT WITHIN THE SPACE PROVIDED, PRIOR TO PRODUCT SUBMITTAL REVIEW.
- ELECTRICAL CONTRACTOR SHALL COORDINATE WITH THE LOW VOLTAGE ('T' SERIES) PLANS, INCLUDING FIRE ALARM AND SYSTEMS INSTALLER, AND PROVIDE ROUGH IN AS NEEDED.
- GENERAL PURPOSE CONVENIENCE RECEPTACLES LOCATED ON THE BUILDING EXTERIOR, OTHER THAN INTERIOR COURT YARD, SHALL BE EQUIPPED WITH A LOCKING, WEATHER PROOF COVER.

KEYED NOTES:

- GENERATOR DISCONNECT. SEE ONE-LINE DIAGRAM ON SHEET E1.11.
- PROVIDE ONE 20A, 120V, 1P CIRCUIT FOR GENERATOR REMOTE ANNUNCIATOR. FED FROM PANEL E1.
- PROVIDE ONE 20A, 120V, 1P POWER CONNECTION FOR BUILDING SIGNS. CIRCUIT AS INDICATED VIA TIME CLOCK. MOUNT JUNCTION BOX TIGHT TO CEILING (AT BUILDING INTERIOR), COORDINATING EXACT LOCATION WITH SIGN INSTALLER'S SLEEVE AND PER ARCHITECT'S DIRECTION.
- PROVIDE ONE 20A, 120V, 1P CIRCUIT FROM PANEL H1 FOR BUILDING ENTRY ACCESS CONTROL SYSTEM AND PROVIDE ROUGH IN AND WIRING TO ACCESS POINTS LOCATED ON PLANS. CONSULT WITH LOW VOLTAGE SYSTEMS INSTALLER AND THE 'T' SERIES SHEETS FOR ADDITIONAL INFORMATION.
- VERIFY ELEVATOR EQUIPMENT LOCATION AND ELECTRICAL REQUIREMENTS WITH ARCHITECT AND/OR ELEVATOR PROVIDER.
- PROVIDE ONE 20A, 120V, 1P CIRCUIT FROM PANEL H1 FOR AUTOMATIC DOOR OPENERS.
- ELECTRICAL SERVICE METER ROOMS SHALL HAVE OUTWARD SWING DOORS EQUIPPED WITH PANIC HARDWARE. PROVIDE A KEY BOX AT THE EXTERIOR FOR ELECTRICAL UTILITIES' 24/7 ACCESS.
- LOW VOLTAGE/COMMUNICATIONS SYSTEM DEMARCATION BOARD(S). COORDINATE LOCATIONS AND ELECTRICAL POWER REQUIREMENTS WITH THE TELECOM PLANS ('T' SERIES SHEETS) AND LOW VOLTAGE SYSTEMS INSTALLERS, AND PROVIDE ROUGH IN AND/OR FINAL ELECTRICAL POWER CONNECTIONS & DEVICES. REFER PANEL 'H1' SCHEDULE ON E1.12 FOR CIRCUITS.
- DEDICATED POWER FOR WHEELCHAIR LIFT. VERIFY EXACT REQUIREMENTS WITH MANUFACTURER/INSTALLER PRIOR TO ROUGH IN.
- DEDICATED 20A, 120V RECEPTACLE FOR PALLET JACK CHARGING.
- PROVIDE ONE 30A, 208V, 1PH ELECTRICAL CIRCUIT FOR TRASH COMPACTOR. FEED FROM PANEL M1.
- DEDICATED 20A, 120V RECEPTACLE FOR ELECTRIC BIKE CHARGING.
- EMERGENCY LIGHTING INVERTER, EVENLITE LM 535, 120V, 1P, OR APPROVED OTHER. REFER TO PANEL H1 FOR CIRCUITING.
- CONTINUOUS OPERATION EXHAUST FAN TO BE TIED INTO THE LIGHTING CIRCUIT FOR THIS AREA, AHEAD OF THE LIGHTING CONTROLS. CONSULT MECHANICAL PLANS AND/OR EQUIPMENT INSTALLER FOR EXACT POWER REQUIREMENTS PRIOR TO ROUGH IN.
- REFER TO TYPICAL UNIT PLANS ON THE E4 SERIES SHEETS FOR ADDITIONAL INFORMATION REGARDING THE HVAC EQUIPMENT LOCATIONS AND CIRCUITING. COORDINATE WITH MECHANICAL INSTALLER.
- COORDINATE WITH LANDSCAPE DESIGNER/INSTALLER FOR EXACT LOCATION AND POWER REQUIREMENTS OF ANY IRRIGATION CONTROLLER. PROVIDE POWER CONNECTION FROM PANEL 'M1' AND SLEEVE TO GRADE.
- PROVIDE ALL CIRCUITING FOR LAUNDRY MACHINES FROM PANEL 'L1'.
- ROOF TOP GFCI RECEPTACLES TO BE PROVIDED WITHIN A 25FT RADIUS OF ALL MECHANICAL EQUIPMENT PER CODE. LOCATIONS SHOWN REPRESENT THIS. FINAL LOCATION(S) SHALL BE FIELD DETERMINED AND INSTALLED PER CODE.
- REFER TO 'T' SERIES SHEETS AND COORDINATE POWER REQUIREMENTS FOR THE FACP PANEL AND DEMARCATION BOARDS.
- ELECTRICAL CONTRACTOR TO CONSULT THE MECHANICAL PLANS AND COORDINATE WITH THE MECHANICAL INSTALLER FOR ANY POWER CONNECTIONS NEEDED FOR DAMPERS. PROVIDE ANY ROUGH IN AND/OR FINAL ELECTRICAL CONNECTIONS.

MEI Consulting Engineers
2007 S.E. Ash St.
Portland, OR 97214
PHN: (503) 234-0548
FAX: (503) 234-0677
INC. WWW.MEIA-ENG.COM
CONTACT: DENISE TAYLOR



CARLETON HART ARCHITECTURE P.C.
830 SW 10th Avenue #200 Portland, Oregon 97205
503.243.2252
www.carletonhart.com

SUSAN EMMONS - NORTH BLDG
624 NW 18TH AVENUE
PORTLAND, OR

NORTHWEST HOUSING ALTERNATIVES

PERMIT SET

**THIRD FLOOR
POWER PLAN**

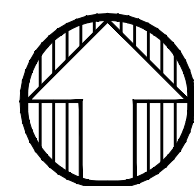
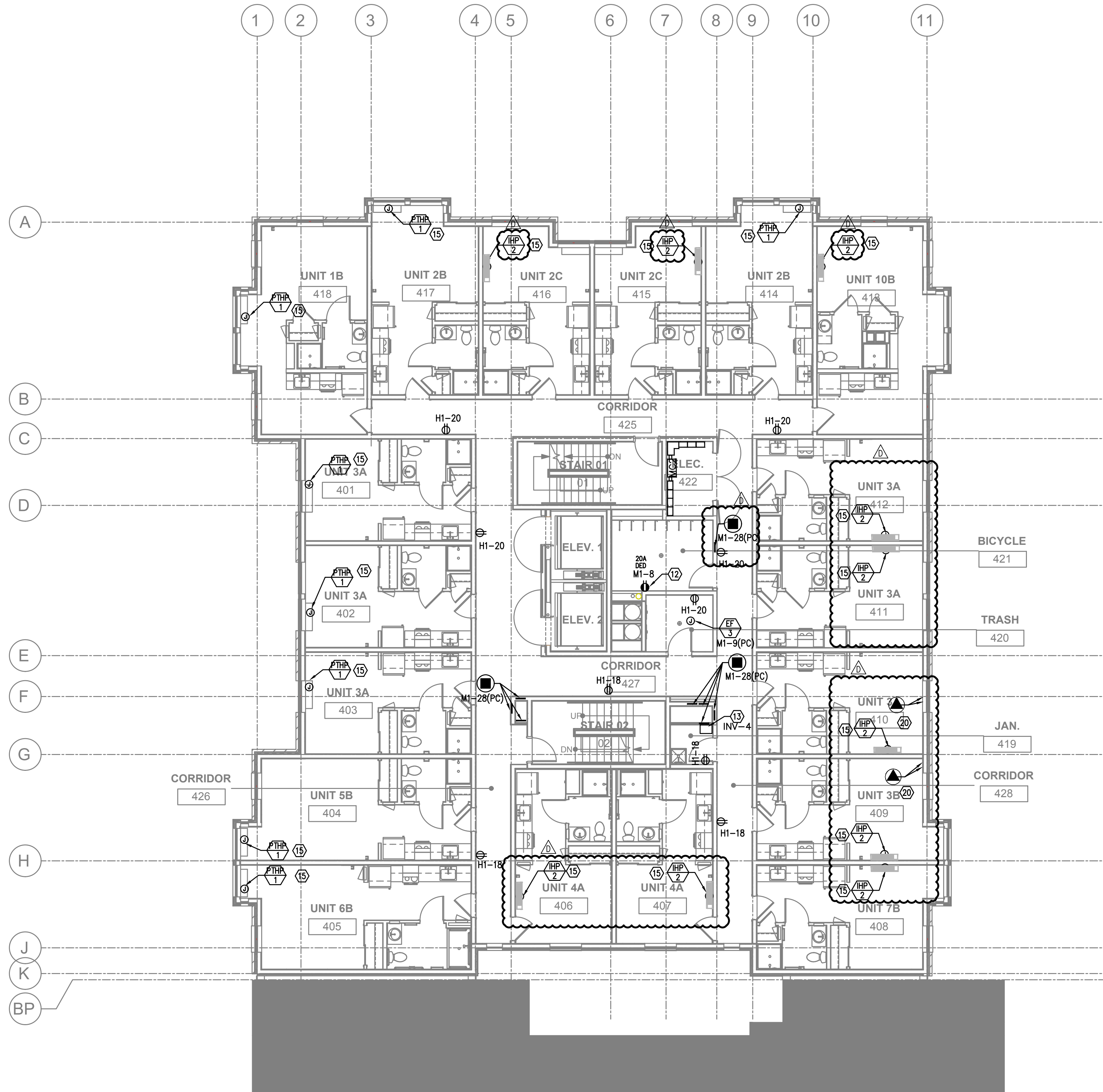
PROJECT NO.
17004
11/04/2020

REVISIONS: A

A CITY PLAN REVIEW 02.26.2021
A PLAN REVIEW 03.12.2021

NOTE: DRAWINGS ARE AT HALF SCALE WHEN PRINTED AT 11X17
COPYRIGHT - CARLETON HART ARCHITECTURE DO NOT REPRODUCE WITHOUT PERMISSION

E3.03



1 FOURTH FLOOR POWER PLAN
E3.04 SCALE: 1/8" = 1'-0"

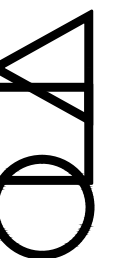
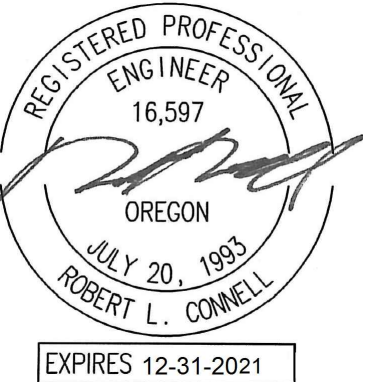
GENERAL POWER NOTES:

- ALL PLANS ARE CONSIDERED DIAGRAMMATICAL. THEREFORE ALL EQUIPMENT SIZES AND DEVICE LOCATIONS ARE APPROXIMATE AND SUBJECT TO FIELD CONDITIONS AND PRODUCT APPROVAL.
- ELECTRICAL CONTRACTOR TO PROVIDE THERMOSTATS NOT SUPPLIED BY MECHANICAL CONTRACTOR. CONSULT MECHANICAL PLANS FOR ADDITIONAL INFORMATION.
- ELECTRICAL CONTRACTOR SHALL PROVIDE INSTALLATION AND FINAL CONNECTION OF THERMOSTATS. CONSULT MECHANICAL CONTRACTOR FOR EXACT REQUIREMENTS PRIOR TO ROUGH IN.
- REFER TO INTERIOR DECORATOR AND/OR ARCHITECTURAL DRAWINGS FOR DIMENSIONED LOCATION(S) AND ELEVATIONS OF FIXTURES & DEVICES. OTHER DEVICES SHOWN ON THE ELECTRICAL PLANS AND NOT INDICATED ON THE DECORATOR'S OR ARCHITECT'S DRAWINGS, SHALL BE INSTALLED AT STANDARD MOUNTING HEIGHT AS INDICATED THE SYMBOL LIST.
- REFER TO ENLARGED TYPICAL UNIT PLANS (E4 SERIES SHEETS) FOR TYPICAL POWER & LIGHTING LAYOUTS FOR THE APARTMENT UNITS.
- ELECTRICAL EQUIPMENT SHOWN IN THE ELECTRICAL ROOMS IS APPROXIMATE, BASED ON TYPICAL PRODUCTS. CONTRACTOR SHALL VERIFY ANY SUBMITTED EQUIPMENT WILL FIT WITHIN THE SPACE PROVIDED, PRIOR TO PRODUCT SUBMITTAL REVIEW.
- ELECTRICAL CONTRACTOR SHALL COORDINATE WITH THE LOW VOLTAGE ("T" SERIES) PLANS, INCLUDING FIRE ALARM AND SYSTEMS INSTALLER, AND PROVIDE ROUGH IN AS NEEDED.
- GENERAL PURPOSE CONVENIENCE RECEPTACLES LOCATED ON THE BUILDING EXTERIOR, OTHER THAN INTERIOR COURT YARD, SHALL BE EQUIPPED WITH A LOCKING, WEATHER PROOF COVER.

KEYED NOTES:

- GENERATOR DISCONNECT. SEE ONE-LINE DIAGRAM ON SHEET E1.11.
- PROVIDE ONE 20A, 120V, 1P CIRCUIT FOR GENERATOR REMOTE ANNUNCIATOR. FED FROM PANEL E1.
- PROVIDE ONE 20A, 120V, 1P POWER CONNECTION FOR BUILDING SIGNS. CIRCUIT AS INDICATED VIA TIME CLOCK. MOUNT JUNCTION BOX TIGHT TO CEILING (AT BUILDING INTERIOR), COORDINATING EXACT LOCATION WITH SIGN INSTALLER'S SLEEVE AND PER ARCHITECT'S DIRECTION.
- PROVIDE ONE 20A, 120V, 1P CIRCUIT FROM PANEL H1 FOR BUILDING ENTRY ACCESS CONTROL SYSTEM AND PROVIDE ROUGH IN AND WIRING TO ACCESS POINTS LOCATED ON PLANS. CONSULT WITH LOW VOLTAGE SYSTEMS INSTALLER AND THE "T" SERIES SHEETS FOR ADDITIONAL INFORMATION.
- VERIFY ELEVATOR EQUIPMENT LOCATION AND ELECTRICAL REQUIREMENTS WITH ARCHITECT AND/OR ELEVATOR PROVIDER.
- PROVIDE ONE 20A, 120V, 1P CIRCUIT FROM PANEL H1 FOR AUTOMATIC DOOR OPENERS.
- ELECTRICAL SERVICE METER ROOMS SHALL HAVE OUTWARD SWING DOORS EQUIPPED WITH PANIC HARDWARE. PROVIDE A KEY BOX AT THE EXTERIOR FOR ELECTRICAL UTILITIES' 24/7 ACCESS.
- LOW VOLTAGE/COMMUNICATIONS SYSTEM DEMARCATION BOARD(S). COORDINATE LOCATIONS AND ELECTRICAL POWER REQUIREMENTS WITH THE TELECOM PLANS ("T" SERIES SHEETS) AND LOW VOLTAGE SYSTEMS INSTALLERS, AND PROVIDE ROUGH IN AND/OR FINAL ELECTRICAL POWER CONNECTIONS & DEVICES. REFER PANEL "H1" SCHEDULE ON E1.12 FOR CIRCUITS.
- DEDICATED POWER FOR WHEELCHAIR LIFT. VERIFY EXACT REQUIREMENTS WITH MANUFACTURER/INSTALLER PRIOR TO ROUGH IN.
- DEDICATED 20A, 120V RECEPTACLE FOR PALLET JACK CHARGING.
- PROVIDE ONE 30A, 208V, 1PH ELECTRICAL CIRCUIT FOR TRASH COMPACTOR. FEED FROM PANEL M1.
- DEDICATED 20A, 120V RECEPTACLE FOR ELECTRIC BIKE CHARGING.
- EMERGENCY LIGHTING INVERTER. EVENLITE LM 535, 120V, 1P, OR APPROVED OTHER. REFER TO PANEL H1 FOR CIRCUITING.
- CONTINUOUS OPERATION EXHAUST FAN TO BE TIED INTO THE LIGHTING CIRCUIT FOR THIS AREA, AHEAD OF THE LIGHTING CONTROLS. CONSULT MECHANICAL PLANS AND/OR EQUIPMENT INSTALLER FOR EXACT POWER REQUIREMENTS PRIOR TO ROUGH IN.
- REFER TO TYPICAL UNIT PLANS ON THE E4 SERIES SHEETS FOR ADDITIONAL INFORMATION REGARDING THE HVAC EQUIPMENT LOCATIONS AND CIRCUITING. COORDINATE WITH MECHANICAL INSTALLER.
- COORDINATE WITH LANDSCAPE DESIGNER/INSTALLER FOR EXACT LOCATION AND POWER REQUIREMENTS OF ANY IRRIGATION CONTROLLER. PROVIDE POWER CONNECTION FROM PANEL "M1" AND SLEEVE TO GRADE.
- PROVIDE ALL CIRCUITING FOR LAUNDRY MACHINES FROM PANEL "L1".
- ROOF TOP GFCI RECEPTACLES TO BE PROVIDED WITHIN A 25FT RADIUS OF ALL MECHANICAL EQUIPMENT PER CODE. LOCATIONS SHOWN REPRESENT THIS. FINAL LOCATION(S) SHALL BE FIELD DETERMINED AND INSTALLED PER CODE.
- REFER TO "T" SERIES SHEETS AND COORDINATE POWER REQUIREMENTS FOR THE FACP PANEL AND DEMARCATION BOARDS.
- ELECTRICAL CONTRACTOR TO CONSULT THE MECHANICAL PLANS AND COORDINATE WITH THE MECHANICAL INSTALLER FOR ANY POWER CONNECTIONS NEEDED FOR DAMPERS. PROVIDE ANY ROUGH IN AND/OR FINAL ELECTRICAL CONNECTIONS.

MEIA Consulting Engineers
2007 S.E. Ash St.
Portland, OR 97214
PHN: (503) 234-0548
FAX: (503) 234-0677
INC. WWW.MEIA-ENG.COM
CONTACT: DENISE TAYLOR



CARLETON HART ARCHITECTURE P.C.
830 SW 10th Avenue #200 Portland, Oregon 97205
503.243.2252
www.carletonhart.com

SUSAN EMMONS - NORTH BLDG
624 NW 18TH AVENUE
PORTLAND, OR

NORTHWEST HOUSING ALTERNATIVES

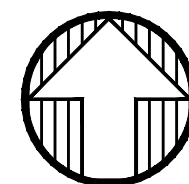
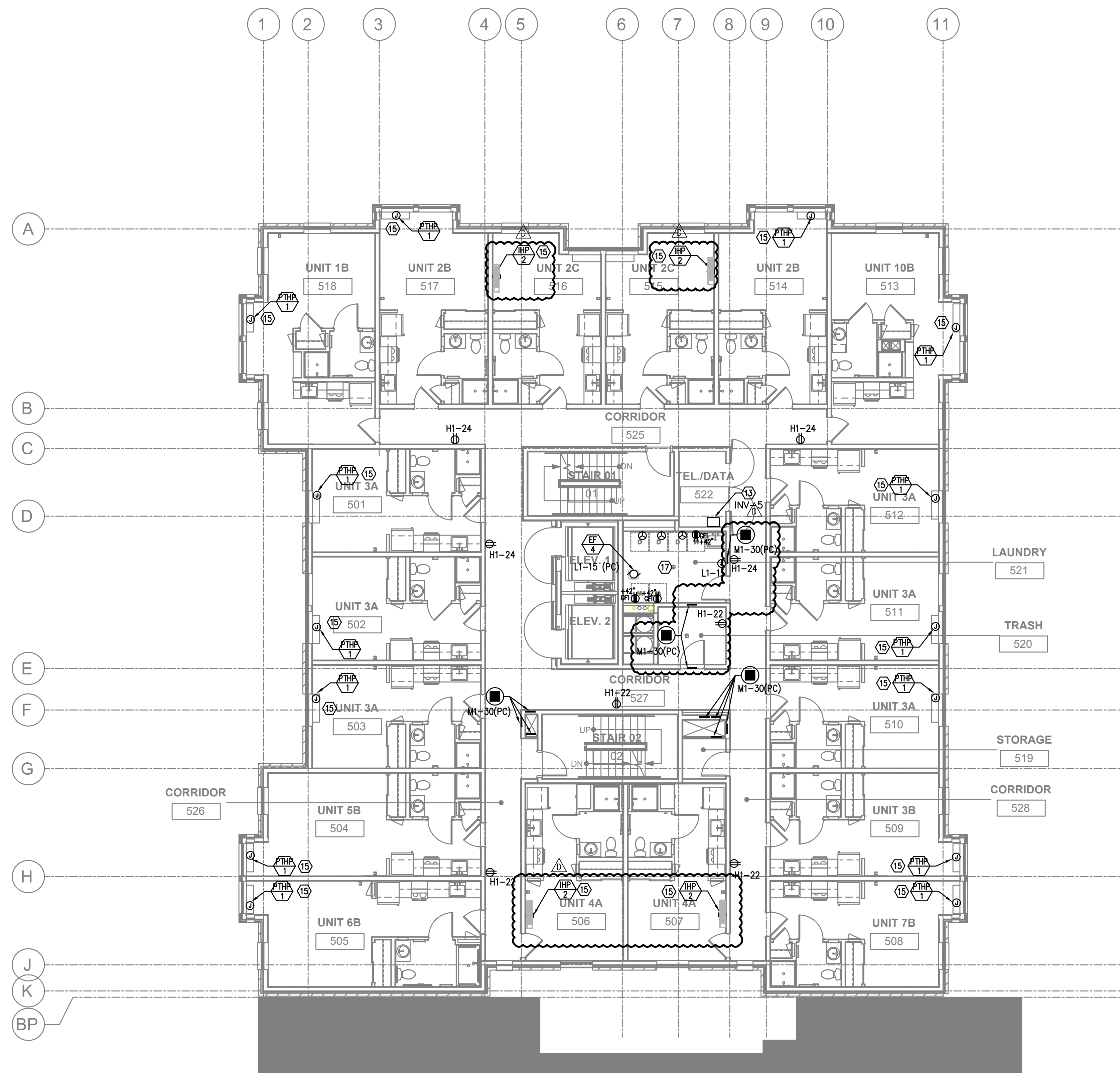
PERMIT SET

**FOURTH FLOOR
POWER PLAN**
PROJECT NO.
17004
11/04/2020

REVISIONS:
CITY PLAN REVIEW 02.26.2021
PLAN REVIEW 03.12.2021

NOTE: DRAWINGS ARE AT HALF SCALE WHEN PRINTED AT 11X17
COPYRIGHT - CARLETON HART ARCHITECTURE DO NOT REPRODUCE WITHOUT PERMISSION

E3.04



1 FIFTH FLOOR POWER PLAN
E3.05 SCALE: 1/8" = 1'-0"

GENERAL POWER NOTES:

- ALL PLANS ARE CONSIDERED DIAGRAMMATICAL. THEREFORE ALL EQUIPMENT SIZES AND DEVICE LOCATIONS ARE APPROXIMATE AND SUBJECT TO FIELD CONDITIONS AND PRODUCT APPROVAL.
- ELECTRICAL CONTRACTOR TO PROVIDE THERMOSTATS NOT SUPPLIED BY MECHANICAL CONTRACTOR. CONSULT MECHANICAL PLANS FOR ADDITIONAL INFORMATION.
- ELECTRICAL CONTRACTOR SHALL PROVIDE INSTALLATION AND FINAL CONNECTION OF THERMOSTATS. CONSULT MECHANICAL CONTRACTOR FOR EXACT REQUIREMENTS PRIOR TO ROUGH IN.
- REFER TO INTERIOR DECORATOR AND/OR ARCHITECTURAL DRAWINGS FOR DIMENSIONED LOCATION(S) AND ELEVATIONS OF FIXTURES & DEVICES. OTHER DEVICES SHOWN ON THE ELECTRICAL PLANS AND NOT INDICATED ON THE DECORATOR'S OR ARCHITECT'S DRAWINGS, SHALL BE INSTALLED AT STANDARD MOUNTING HEIGHT AS INDICATED THE SYMBOL LIST.
- REFER TO ENLARGED TYPICAL UNIT PLANS (E4 SERIES SHEETS) FOR TYPICAL POWER & LIGHTING LAYOUTS FOR THE APARTMENT UNITS.
- ELECTRICAL EQUIPMENT SHOWN IN THE ELECTRICAL ROOMS IS APPROXIMATE, BASED ON TYPICAL PRODUCTS. CONTRACTOR SHALL VERIFY ANY SUBMITTED EQUIPMENT WILL FIT WITHIN THE SPACE PROVIDED, PRIOR TO PRODUCT SUBMITTAL REVIEW.
- ELECTRICAL CONTRACTOR SHALL COORDINATE WITH THE LOW VOLTAGE ('T' SERIES) PLANS, INCLUDING FIRE ALARM AND SYSTEMS INSTALLER, AND PROVIDE ROUGH IN AS NEEDED.
- GENERAL PURPOSE CONVENIENCE RECEPTACLES LOCATED ON THE BUILDING EXTERIOR, OTHER THAN INTERIOR COURT YARD, SHALL BE EQUIPPED WITH A LOCKING, WEATHER PROOF COVER.

KEYED NOTES:

- GENERATOR DISCONNECT. SEE ONE-LINE DIAGRAM ON SHEET E1.11.
- PROVIDE ONE 20A, 120V, 1P CIRCUIT FOR GENERATOR REMOTE ANNUNCIATOR. FED FROM PANEL E1.
- PROVIDE ONE 20A, 120V, 1P POWER CONNECTION FOR BUILDING SIGNS. CIRCUIT AS INDICATED VIA TIME CLOCK. MOUNT JUNCTION BOX TIGHT TO CEILING (AT BUILDING INTERIOR), COORDINATING EXACT LOCATION WITH SIGN INSTALLER'S SLEEVE AND PER ARCHITECT'S DIRECTION.
- PROVIDE ONE 20A, 120V, 1P CIRCUIT FROM PANEL H1 FOR BUILDING ENTRY ACCESS CONTROL SYSTEM AND PROVIDE ROUGH IN AND WIRING TO ACCESS POINTS LOCATED ON PLANS. CONSULT WITH LOW VOLTAGE SYSTEMS INSTALLER AND THE 'T' SERIES SHEETS FOR ADDITIONAL INFORMATION.
- VERIFY ELEVATOR EQUIPMENT LOCATION AND ELECTRICAL REQUIREMENTS WITH ARCHITECT AND/OR ELEVATOR PROVIDER.
- PROVIDE ONE 20A, 120V, 1P CIRCUIT FROM PANEL H1 FOR AUTOMATIC DOOR OPENERS.
- ELECTRICAL SERVICE METER ROOMS SHALL HAVE OUTWARD SWING DOORS EQUIPPED WITH PANIC HARDWARE. PROVIDE A KEY BOX AT THE EXTERIOR FOR ELECTRICAL UTILITIES' 24/7 ACCESS.
- LOW VOLTAGE/COMMUNICATIONS SYSTEM DEMARCATION BOARD(S). COORDINATE LOCATIONS AND ELECTRICAL POWER REQUIREMENTS WITH THE TELECOM PLANS ('T' SERIES SHEETS) AND LOW VOLTAGE SYSTEMS INSTALLERS, AND PROVIDE ROUGH IN AND/OR FINAL ELECTRICAL POWER CONNECTIONS & DEVICES. REFER PANEL 'H1' SCHEDULE ON E1.12 FOR CIRCUITS.
- DEDICATED POWER FOR WHEELCHAIR LIFT. VERIFY EXACT REQUIREMENTS WITH MANUFACTURER/INSTALLER PRIOR TO ROUGH IN.
- DEDICATED 20A, 120V RECEPTACLE FOR PALLET JACK CHARGING.
- PROVIDE ONE 30A, 208V, 1PH ELECTRICAL CIRCUIT FOR TRASH COMPACTOR. FEED FROM PANEL M1.
- DEDICATED 20A, 120V RECEPTACLE FOR ELECTRIC BIKE CHARGING.
- EMERGENCY LIGHTING INVERTER, EVENLITE LM 535, 120V, 1P, OR APPROVED OTHER. REFER TO PANEL H1 FOR CIRCUITING.
- CONTINUOUS OPERATION EXHAUST FAN TO BE TIED INTO THE LIGHTING CIRCUIT FOR THIS AREA, AHEAD OF THE LIGHTING CONTROLS. CONSULT MECHANICAL PLANS AND/OR EQUIPMENT INSTALLER FOR EXACT POWER REQUIREMENTS PRIOR TO ROUGH IN.
- REFER TO TYPICAL UNIT PLANS ON THE E4 SERIES SHEETS FOR ADDITIONAL INFORMATION REGARDING THE HVAC EQUIPMENT LOCATIONS AND CIRCUITING. COORDINATE WITH MECHANICAL INSTALLER.
- COORDINATE WITH LANDSCAPE DESIGNER/INSTALLER FOR EXACT LOCATION AND POWER REQUIREMENTS OF ANY IRRIGATION CONTROLLER. PROVIDE POWER CONNECTION FROM PANEL 'M1' AND SLEEVE TO GRADE.
- PROVIDE ALL CIRCUITING FOR LAUNDRY MACHINES FROM PANEL 'L1'.
- ROOF TOP GFCI RECEPTACLES TO BE PROVIDED WITHIN A 25FT RADIUS OF ALL MECHANICAL EQUIPMENT PER CODE. LOCATIONS SHOWN REPRESENT THIS. FINAL LOCATION(S) SHALL BE FIELD DETERMINED AND INSTALLED PER CODE.
- REFER TO 'T' SERIES SHEETS AND COORDINATE POWER REQUIREMENTS FOR THE FACP PANEL AND DEMARCATION BOARDS.
- ELECTRICAL CONTRACTOR TO CONSULT THE MECHANICAL PLANS AND COORDINATE WITH THE MECHANICAL INSTALLER FOR ANY POWER CONNECTIONS NEEDED FOR DAMPERS. PROVIDE ANY ROUGH IN AND/OR FINAL ELECTRICAL CONNECTIONS.

M Consulting Engineers
2007 S.E. Ash St.
Portland, OR 97214
PHN: (503) 234-0548
FAX: (503) 234-0877
INC. WWW.MFIA-ENG.COM
CONTACT: DENISE TAYLOR



CARLETON HART ARCHITECTURE P.C.
830 SW 10th Avenue #200 Portland, OR 97205
503 243 2252
www.carletonhart.com

SUSAN EMMONS - NORTH BLDG
624 NW 18TH AVENUE
PORTLAND, OR

NORTHWEST HOUSING ALTERNATIVES

PERMIT SET

FIFTH FLOOR
POWER PLAN

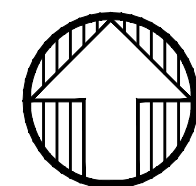
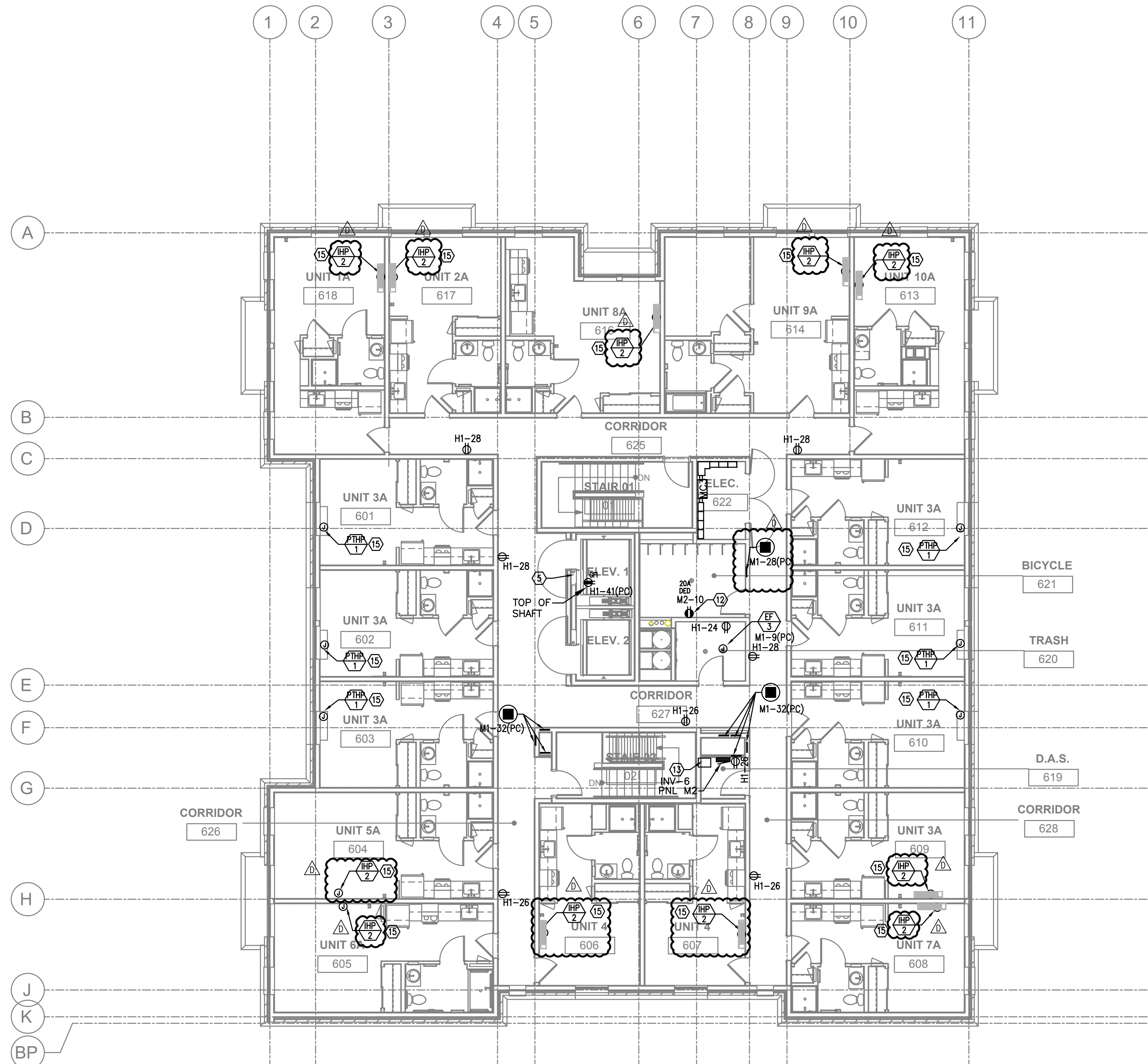
PROJECT NO.
17004
11/04/2020

REVISIONS: A

A CITY PLAN REVIEW 02.28.2021
A PLAN REVIEW 03.12.2021

NOTE: DRAWINGS ARE AT HALF SCALE WHEN PRINTED AT 11X17
COPYRIGHT - CARLETON HART ARCHITECTURE DO NOT REPRODUCE WITHOUT PERMISSION

E3.05



1
E3.06 SIXTH FLOOR POWER PLAN
SCALE: 1/8" = 1'-0"

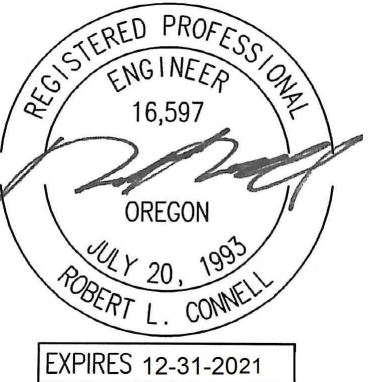
GENERAL POWER NOTES:

- ALL PLANS ARE CONSIDERED DIAGRAMMATICAL. THEREFORE ALL EQUIPMENT SIZES AND DEVICE LOCATIONS ARE APPROXIMATE AND SUBJECT TO FIELD CONDITIONS AND PRODUCT APPROVAL.
- ELECTRICAL CONTRACTOR TO PROVIDE THERMOSTATS NOT SUPPLIED BY MECHANICAL CONTRACTOR. CONSULT MECHANICAL PLANS FOR ADDITIONAL INFORMATION.
- ELECTRICAL CONTRACTOR SHALL PROVIDE INSTALLATION AND FINAL CONNECTION OF THERMOSTATS. CONSULT MECHANICAL CONTRACTOR FOR EXACT REQUIREMENTS PRIOR TO ROUGH IN.
- REFER TO INTERIOR DECORATOR AND/OR ARCHITECTURAL DRAWINGS FOR DIMENSIONED LOCATION(S) AND ELEVATIONS OF FIXTURES & DEVICES. OTHER DEVICES SHOWN ON THE ELECTRICAL PLANS AND NOT INDICATED ON THE DECORATOR'S OR ARCHITECT'S DRAWINGS, SHALL BE INSTALLED AT STANDARD MOUNTING HEIGHT AS INDICATED THE SYMBOL LIST.
- REFER TO ENLARGED TYPICAL UNIT PLANS (E4 SERIES SHEETS) FOR TYPICAL POWER & LIGHTING LAYOUTS FOR THE APARTMENT UNITS.
- ELECTRICAL EQUIPMENT SHOWN IN THE ELECTRICAL ROOMS IS APPROXIMATE, BASED ON TYPICAL PRODUCTS. CONTRACTOR SHALL VERIFY ANY SUBMITTED EQUIPMENT WILL FIT WITHIN THE SPACE PROVIDED, PRIOR TO PRODUCT SUBMITTAL REVIEW.**
- ELECTRICAL CONTRACTOR SHALL COORDINATE WITH THE LOW VOLTAGE ('T' SERIES) PLANS, INCLUDING FIRE ALARM AND SYSTEMS INSTALLER, AND PROVIDE ROUGH IN AS NEEDED.
- GENERAL PURPOSE CONVENIENCE RECEPTACLES LOCATED ON THE BUILDING EXTERIOR, OTHER THAN INTERIOR COURT YARD, SHALL BE EQUIPPED WITH A LOCKING, WEATHER PROOF COVER.

KEYED NOTES:

- GENERATOR DISCONNECT. SEE ONE-LINE DIAGRAM ON SHEET E1.11.
- PROVIDE ONE 20A, 120V, 1P CIRCUIT FOR GENERATOR REMOTE ANNUNCIATOR. FED FROM PANEL E1.
- PROVIDE ONE 20A, 120V, 1P POWER CONNECTION FOR BUILDING SIGNS. CIRCUIT AS INDICATED VIA TIME CLOCK. MOUNT JUNCTION BOX TIGHT TO CEILING (AT BUILDING INTERIOR), COORDINATING EXACT LOCATION WITH SIGN INSTALLER'S SLEEVE AND PER ARCHITECT'S DIRECTION.
- PROVIDE ONE 20A, 120V, 1P CIRCUIT FROM PANEL H1 FOR BUILDING ENTRY ACCESS CONTROL SYSTEM AND PROVIDE ROUGH IN AND WIRING TO ACCESS POINTS LOCATED ON PLANS. CONSULT WITH LOW VOLTAGE SYSTEMS INSTALLER AND THE 'T' SERIES SHEETS FOR ADDITIONAL INFORMATION.
- VERIFY ELEVATOR EQUIPMENT LOCATION AND ELECTRICAL REQUIREMENTS WITH ARCHITECT AND/OR ELEVATOR PROVIDER.
- PROVIDE ONE 20A, 120V, 1P CIRCUIT FROM PANEL H1 FOR AUTOMATIC DOOR OPENERS.
- ELECTRICAL SERVICE METER ROOMS SHALL HAVE OUTWARD SWING DOORS EQUIPPED WITH PANIC HARDWARE. PROVIDE A KEY BOX AT THE EXTERIOR FOR ELECTRICAL UTILITIES' 24/7 ACCESS.
- LOW VOLTAGE/COMMUNICATIONS SYSTEM DEMARCATION BOARD(S). COORDINATE LOCATIONS AND ELECTRICAL POWER REQUIREMENTS WITH THE TELECOM PLANS ('T' SERIES SHEETS) AND LOW VOLTAGE SYSTEMS INSTALLERS, AND PROVIDE ROUGH IN AND/OR FINAL ELECTRICAL POWER CONNECTIONS & DEVICES. REFER PANEL 'H1' SCHEDULE ON E1.12 FOR CIRCUITS.
- DEDICATED POWER FOR WHEELCHAIR LIFT. VERIFY EXACT REQUIREMENTS WITH MANUFACTURER/INSTALLER PRIOR TO ROUGH IN.
- DEDICATED 20A, 120V RECEPTACLE FOR PALLET JACK CHARGING.
- PROVIDE ONE 30A, 208V, 1PH ELECTRICAL CIRCUIT FOR TRASH COMPACTOR. FEED FROM PANEL M1.
- DEDICATED 20A, 120V RECEPTACLE FOR ELECTRIC BIKE CHARGING.
- EMERGENCY LIGHTING INVERTER. EVENLITE LM 535, 120V, 1P, OR APPROVED OTHER. REFER TO PANEL H1 FOR CIRCUITING.
- CONTINUOUS OPERATION EXHAUST FAN TO BE TIED INTO THE LIGHTING CIRCUIT FOR THIS AREA, AHEAD OF THE LIGHTING CONTROLS. CONSULT MECHANICAL PLANS AND/OR EQUIPMENT INSTALLER FOR EXACT POWER REQUIREMENTS PRIOR TO ROUGH IN.
- REFER TO TYPICAL UNIT PLANS ON THE E4 SERIES SHEETS FOR ADDITIONAL INFORMATION REGARDING THE HVAC EQUIPMENT LOCATIONS AND CIRCUITING. COORDINATE WITH MECHANICAL INSTALLER.
- COORDINATE WITH LANDSCAPE DESIGNER/INSTALLER FOR EXACT LOCATION AND POWER REQUIREMENTS OF ANY IRRIGATION CONTROLLER. PROVIDE POWER CONNECTION FROM PANEL 'M1' AND SLEEVE TO GRADE.
- PROVIDE ALL CIRCUITING FOR LAUNDRY MACHINES FROM PANEL 'L1'.
- ROOF TOP GFCI RECEPTACLES TO BE PROVIDED WITHIN A 25FT RADIUS OF ALL MECHANICAL EQUIPMENT PER CODE. LOCATIONS SHOWN REPRESENT THIS. FINAL LOCATION(S) SHALL BE FIELD DETERMINED AND INSTALLED PER CODE.
- REFER TO 'T' SERIES SHEETS AND COORDINATE POWER REQUIREMENTS FOR THE FACP PANEL AND DEMARCATION BOARDS.
- ELECTRICAL CONTRACTOR TO CONSULT THE MECHANICAL PLANS AND COORDINATE WITH THE MECHANICAL INSTALLER FOR ANY POWER CONNECTIONS NEEDED FOR DAMPERS. PROVIDE ANY ROUGH IN AND/OR FINAL ELECTRICAL CONNECTIONS.**

MEIA Consulting Engineers
2007 S.E. Ash St.
Portland, OR 97214
PHN: (503) 234-0548
FAX: (503) 234-0877
INC. WWW.MEIA-ENG.COM
CONTACT: DENISE TAYLOR



CARLETON HART ARCHITECTURE P.C.
830 SW 10th Avenue #200 Portland, Oregon 97205
503 243 2252
www.carletonhart.com

SUSAN EMMONS - NORTH BLDG
624 NW 18TH AVENUE
PORTLAND, OR

NORTHWEST HOUSING ALTERNATIVES

PERMIT SET

SIXTH FLOOR
POWER PLAN

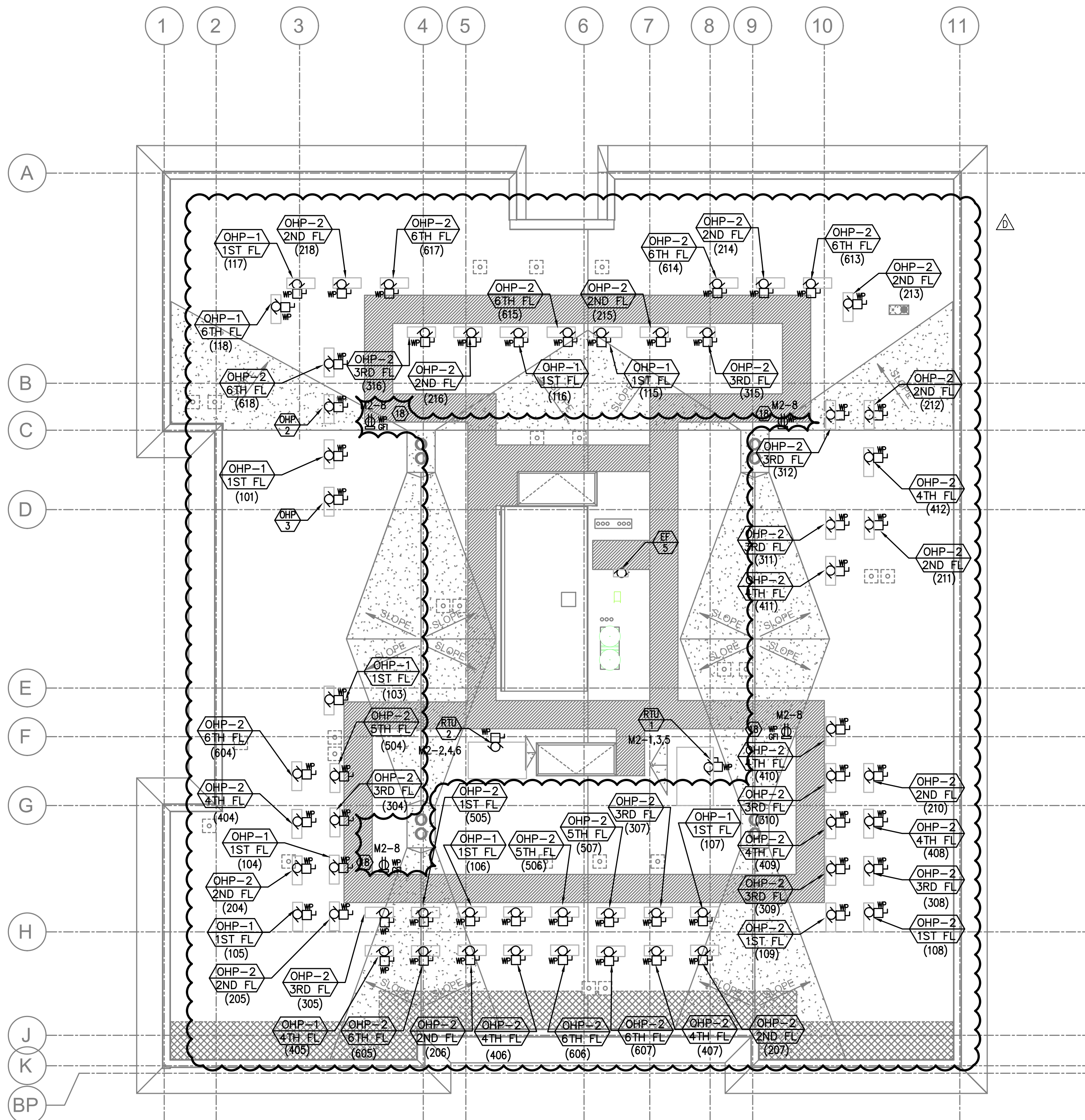
PROJECT NO.
17004
11/04/2020

REVISIONS: A

A CITY PLAN REVIEW 02.28.2021
PLAN REVIEW 03.12.2021

NOTE: DRAWINGS ARE AT HALF SCALE WHEN PRINTED AT 11X17
COPYRIGHT - CARLETON HART ARCHITECTURE DO NOT REPRODUCE WITHOUT PERMISSION

E3.06



1 ROOF LEVEL POWER PLAN
E3.07 SCALE: 1/8" = 1'-0"

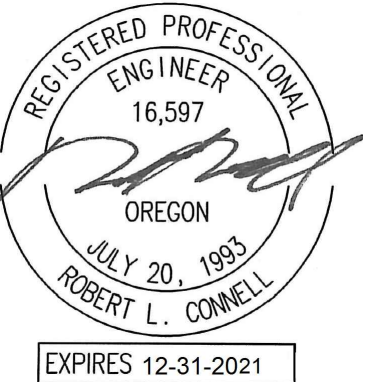
GENERAL POWER NOTES:

- ALL PLANS ARE CONSIDERED DIAGRAMMATICAL. THEREFORE ALL EQUIPMENT SIZES AND DEVICE LOCATIONS ARE APPROXIMATE AND SUBJECT TO FIELD CONDITIONS AND PRODUCT APPROVAL.
- ELECTRICAL CONTRACTOR TO PROVIDE THERMOSTATS NOT SUPPLIED BY MECHANICAL CONTRACTOR. CONSULT MECHANICAL PLANS FOR ADDITIONAL INFORMATION.
- ELECTRICAL CONTRACTOR SHALL PROVIDE INSTALLATION AND FINAL CONNECTION OF THERMOSTATS. CONSULT MECHANICAL CONTRACTOR FOR EXACT REQUIREMENTS PRIOR TO ROUGH IN.
- REFER TO INTERIOR DECORATOR AND/OR ARCHITECTURAL DRAWINGS FOR DIMENSIONED LOCATION(S) AND ELEVATIONS OF FIXTURES & DEVICES. OTHER DEVICES SHOWN ON THE ELECTRICAL PLANS AND NOT INDICATED ON THE DECORATOR'S OR ARCHITECT'S DRAWINGS, SHALL BE INSTALLED AT STANDARD MOUNTING HEIGHT AS INDICATED THE SYMBOL LIST.
- REFER TO ENLARGED TYPICAL UNIT PLANS (E4 SERIES SHEETS) FOR TYPICAL POWER & LIGHTING LAYOUTS FOR THE APARTMENT UNITS.
- ELECTRICAL EQUIPMENT SHOWN IN THE ELECTRICAL ROOMS IS APPROXIMATE, BASED ON TYPICAL PRODUCTS. CONTRACTOR SHALL VERIFY ANY SUBMITTED EQUIPMENT WILL FIT WITHIN THE SPACE PROVIDED, PRIOR TO PRODUCT SUBMITTAL REVIEW.
- ELECTRICAL CONTRACTOR SHALL COORDINATE WITH THE LOW VOLTAGE ('T' SERIES) PLANS, INCLUDING FIRE ALARM AND SYSTEMS INSTALLER, AND PROVIDE ROUGH IN AS NEEDED.
- GENERAL PURPOSE CONVENIENCE RECEPTACLES LOCATED ON THE BUILDING EXTERIOR, OTHER THAN INTERIOR COURT YARD, SHALL BE EQUIPPED WITH A LOCKING, WEATHER PROOF COVER.

KEYED NOTES:

- GENERATOR DISCONNECT. SEE ONE-LINE DIAGRAM ON SHEET E1.11.
- PROVIDE ONE 20A, 120V, 1P CIRCUIT FOR GENERATOR REMOTE ANNUNCIATOR. FED FROM PANEL E1.
- PROVIDE ONE 20A, 120V, 1P POWER CONNECTION FOR BUILDING SIGNS. CIRCUIT AS INDICATED VIA TIME CLOCK. MOUNT JUNCTION BOX TIGHT TO CEILING (AT BUILDING INTERIOR), COORDINATING EXACT LOCATION WITH SIGN INSTALLER'S SLEEVE AND PER ARCHITECT'S DIRECTION.
- PROVIDE ONE 20A, 120V, 1P CIRCUIT FROM PANEL H1 FOR BUILDING ENTRY ACCESS CONTROL SYSTEM AND PROVIDE ROUGH IN AND WIRING TO ACCESS POINTS LOCATED ON PLANS. CONSULT WITH LOW VOLTAGE SYSTEMS INSTALLER AND THE 'T' SERIES SHEETS FOR ADDITIONAL INFORMATION.
- VERIFY ELEVATOR EQUIPMENT LOCATION AND ELECTRICAL REQUIREMENTS WITH ARCHITECT AND/OR ELEVATOR PROVIDER.
- PROVIDE ONE 20A, 120V, 1P CIRCUIT FROM PANEL H1 FOR AUTOMATIC DOOR OPENERS.
- ELECTRICAL SERVICE METER ROOMS SHALL HAVE OUTWARD SWING DOORS EQUIPPED WITH PANIC HARDWARE. PROVIDE A KEY BOX AT THE EXTERIOR FOR ELECTRICAL UTILITIES' 24/7 ACCESS.
- LOW VOLTAGE/COMMUNICATIONS SYSTEM DEMARCATION BOARD(S). COORDINATE LOCATIONS AND ELECTRICAL POWER REQUIREMENTS WITH THE TELECOM PLANS ('T' SERIES SHEETS) AND LOW VOLTAGE SYSTEMS INSTALLERS, AND PROVIDE ROUGH IN AND/OR FINAL ELECTRICAL POWER CONNECTIONS & DEVICES. REFER PANEL 'H1' SCHEDULE ON E1.12 FOR CIRCUITS.
- DEDICATED POWER FOR WHEELCHAIR LIFT. VERIFY EXACT REQUIREMENTS WITH MANUFACTURER/INSTALLER PRIOR TO ROUGH IN.
- DEDICATED 20A, 120V RECEPTACLE FOR PALLET JACK CHARGING.
- PROVIDE ONE 30A, 208V, 1PH ELECTRICAL CIRCUIT FOR TRASH COMPACTOR. FEED FROM PANEL M1.
- DEDICATED 20A, 120V RECEPTACLE FOR ELECTRIC BIKE CHARGING.
- EMERGENCY LIGHTING INVERTER, EVENLITE LM 535, 120V, 1P, OR APPROVED OTHER. REFER TO PANEL H1 FOR CIRCUITING.
- CONTINUOUS OPERATION EXHAUST FAN TO BE TIED INTO THE LIGHTING CIRCUIT FOR THIS AREA, AHEAD OF THE LIGHTING CONTROLS. CONSULT MECHANICAL PLANS AND/OR EQUIPMENT INSTALLER FOR EXACT POWER REQUIREMENTS PRIOR TO ROUGH IN.
- REFER TO TYPICAL UNIT PLANS ON THE E4 SERIES SHEETS FOR ADDITIONAL INFORMATION REGARDING THE HVAC EQUIPMENT LOCATIONS AND CIRCUITING. COORDINATE WITH MECHANICAL INSTALLER.
- COORDINATE WITH LANDSCAPE DESIGNER/INSTALLER FOR EXACT LOCATION AND POWER REQUIREMENTS OF ANY IRRIGATION CONTROLLER. PROVIDE POWER CONNECTION FROM PANEL 'M1' AND SLEEVE TO GRADE.
- PROVIDE ALL CIRCUITING FOR LAUNDRY MACHINES FROM PANEL 'L1'.
- ROOF TOP GFCI RECEPTACLES TO BE PROVIDED WITHIN A 25FT RADIUS OF ALL MECHANICAL EQUIPMENT PER CODE. LOCATIONS SHOWN REPRESENT THIS. FINAL LOCATION(S) SHALL BE FIELD DETERMINED AND INSTALLED PER CODE.
- REFER TO 'T' SERIES SHEETS AND COORDINATE POWER REQUIREMENTS FOR THE FACP PANEL AND DEMARCATION BOARDS.
- ELECTRICAL CONTRACTOR TO CONSULT THE MECHANICAL PLANS AND COORDINATE WITH THE MECHANICAL INSTALLER FOR ANY POWER CONNECTIONS NEEDED FOR DAMPERS. PROVIDE ANY ROUGH IN AND/OR FINAL ELECTRICAL CONNECTIONS.

MFI Consulting Engineers
2007 S.E. Ash St.
Portland, OR 97214
PHN: (503) 234-0548
FAX: (503) 234-0677
INC. WWW.MFIA-ENG.COM
CONTACT: DENISE TAYLOR



CARLETON HART ARCHITECTURE P.C.
830 sw 10th avenue #200 portlandoregon 97205
503 243 2252
www.carletonhart.com

SUSAN EMMONS - NORTH BLDG
624 NW 18TH AVENUE
PORTLAND, OR
NORTHWEST HOUSING ALTERNATIVES
PERMIT SET

ROOF LEVEL
POWER PLAN

PROJECT NO.
17004
11/04/2020

REVISIONS:
CITY PLAN REVIEW 02.28.2021
PLAN REVIEW 03.12.2021

E3.07